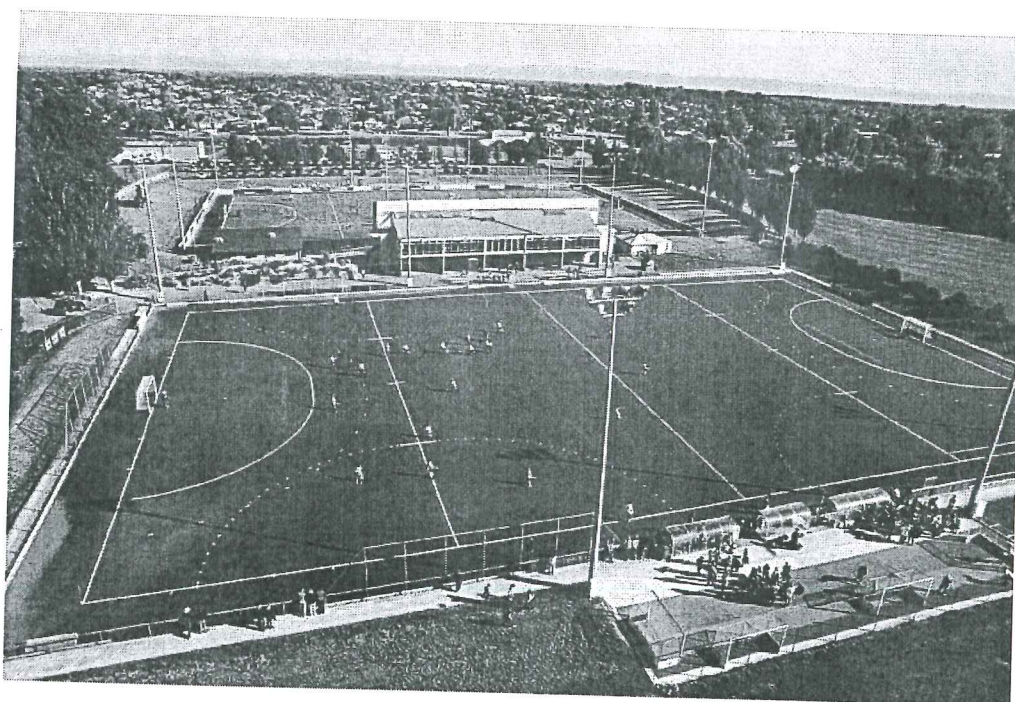


Canterbury Hockey Association (Inc.)

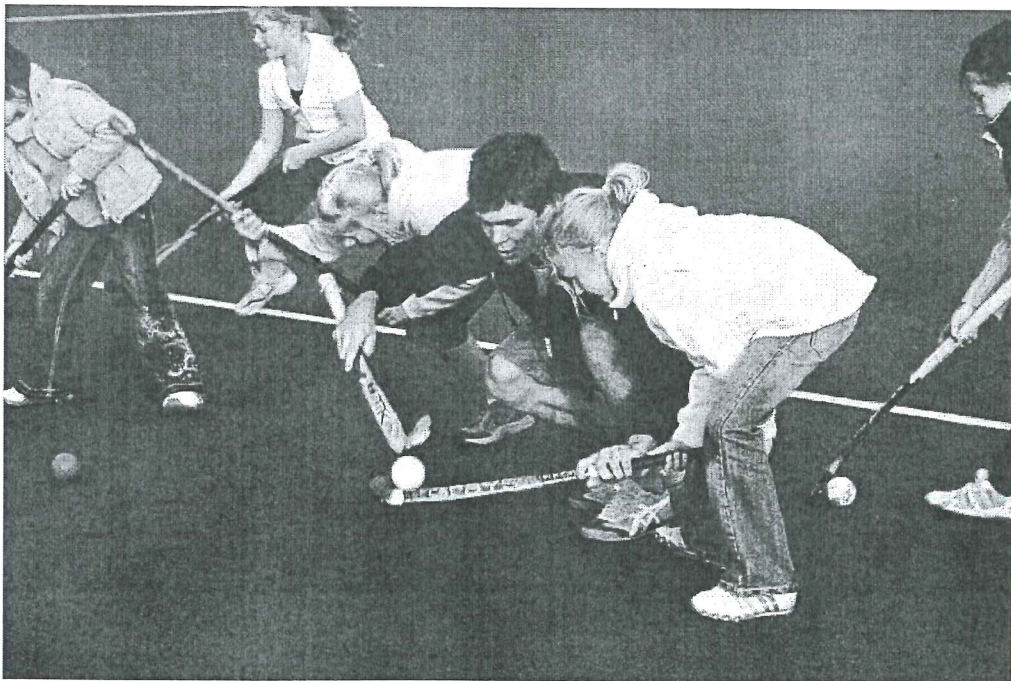
Submission to the  
Christchurch City Council  
on the  
Draft Long-Term Council Community Plan (March 2009)



Prepared: April 2009

Contents

Executive Summary	1
Introduction	1
Need For Additional Fields	2
Links with Council Outcomes	3
Financial Information	3
Allocation of Council Funding for Artificial Hockey Field Development	4
Timeframes	4
Summary	5
Appendix A: 2008 Canterbury Hockey Association Submission to the Metropolitan Sports Facilities Plan	6
Appendix B: 2008 Additional Information Requested by Councillors to the Metropolitan Sports Facilities Plan Submission	32



### Executive Summary

The Canterbury Hockey Association has previously presented a case to the Christchurch City Council (Metropolitan Sports Facilities Plan process) that there is an immediate need for additional artificial hockey fields in Christchurch. There is also a need to future proof for the projected growth in participation numbers within the sport of hockey by preparing for the provision of an additional hockey field every four to five years moving forward.

The Canterbury Hockey Association believes that the Christchurch City Council has a responsibility to assist in addressing the needs for additional artificial hockey fields by providing financial support for each field. The proposed level of funding for each field is one-third of the cost, up to a maximum of \$500,000 for each field. In the ten years to 2019 this would amount to funding of up to \$2 million for four fields.

By providing this level of financial support the Christchurch City Council will be a genuine partner in the development of additional artificial hockey fields and demonstrate a commitment to its own policies and desired outcomes with regard to providing for the physical recreation needs of the community.



### Introduction

Participation numbers in the sport of hockey have been virtually stagnant for the past three years. With the use of the existing three artificial fields at capacity in that time there has been no ability to increase participation numbers and as a result the Canterbury Hockey Association has engaged in minimal marketing and promotions. This is in direct contrast to the period from 2002-2005 just after the last artificial field was installed when the sport experienced participation growth of 30%.

There is certainly strong evidence that the sport has the capacity for considerable growth, but that can only occur if additional artificial fields are made available to the Canterbury Hockey Association. Two independent groups have indicated a commitment to address the immediate need for two additional fields (Canterbury Artificial Surfaces Trust and St. Bede's College) and other groups have indicated an interest in providing the two other fields projected as required in the next ten years (Hornby Hockey Club and Selwyn Hockey Club/Cashmere High School).

All four identified groups, or any alternates that may come forward, would require funding support from a variety of sources, likely to include gaming trusts, The Canterbury Community Trust and even sponsorship to raise the \$1.25-1.8 million required for an artificial hockey field. However, a financial commitment from the Christchurch City Council to each field development would be appropriate and enhance the prospects of each group successfully raising the required capital.

It is relevant to note that the Canterbury Hockey Association does not intend to develop any fields itself. The Canterbury Hockey Association does not have the means to raise the required capital, mainly because it is already maximising the contributions received from gaming trusts for various operational costs and accessing funds for a field from these sources would be to the detriment of existing operations. Therefore, the Canterbury Hockey Association views its role in this process to support any groups that do intend to proceed with the development of an artificial hockey field and where possible provide direct funding assistance to those groups. The Canterbury Hockey Association will then lease or hire fields from these groups for its activities.

#### Need For Additional Fields

The reasons why additional fields are required by the Canterbury Hockey Association were outlined in the submission to the Christchurch City Council as part of the Metropolitan Sports Facilities Plan process. That submission is included in this document as Appendix A. A summary of the main points that justify the need for additional hockey fields to be a component of Council's planning for the next ten years are:

- The existing fields are unable to accommodate existing members effectively with teams playing and practicing at times that are considered unsocial, undesirable and unsafe;
- The existing fields cannot accommodate all requests for use of the existing fields, with over one-third of training time requests turned down in both 2008 and again this year;
- The sport is at capacity and many clubs are turning players away because they simply cannot be accommodated in teams;
- Some local competitions actually are forced to roster teams off each week because there is insufficient field availability to allow every team to play each week; and
- The existing fields are used to such an extent that it is not possible to accommodate national team requirements for local players in national squads to train on a regular basis

These conditions have resulted in the city of Christchurch having the highest ratio of registered players to each field (1,169:1) of any metropolitan centre in New Zealand, with 3,508 Christchurch residents amongst the 3,700 registered members of the Canterbury Hockey Association.

It is appropriate to note that the need for additional hockey fields is not to support the elite element of the sport. Whereas a number of other projects identified for sport in the draft LTCCP appear to be for the elite aspect of a sport (e.g. test cricket venue in Hagley Park or the artificial football field), the basis for additional hockey fields is focused solely on providing the means for the masses, in particular children, to play the sport of hockey. While the existing two fields at Porritt Park could benefit from various improvements to the auxiliary facilities to enhance their status as premier facilities in New Zealand capable of hosting major international tournaments, the primary focus of the Canterbury Hockey Association is participation and providing the means for more Christchurch residents to participate in the sport of hockey.



#### Links With Council Outcomes

The development of additional artificial hockey fields links to Council outcomes as follows:

- Council policy identifies a commitment to encouraging participation in sport and recreation as it has a positive benefit on the community, so should support the development of additional hockey facilities that will be well used and result in increased participation
- Council policy states that it is a priority to ensure communities have access to community facilities that meet their needs and this is not the case presently for hockey
- Council policy states that it is a priority to increase participation in sport programs and hockey is a sport capable of significant increase (30% increase achieved in only four years after the last field was established in 2002)
- Developing artificial fields decreases increasing demand on already limited grass fields required by other sports and is more cost effective for Council. The requested investment in each artificial field (\$500,000) will realise a saving to Council in just three years when compared to the alternate option of maintaining the 15 grass fields required to handle the same number of practices and matches (\$187,500 per year at \$12,500 per grass field)

#### Financial Information

The cost of an artificial hockey field will range between \$1.25-1.8 million. The variance reflects the type of field developed, with sources of this variance including the inclusion of a watering system (approximately \$150,000), the type of artificial surface used and the need for other facilities to support the field (e.g. changing rooms).

It is requested that Council contribute one-third of the costs of each field to be developed in the next ten years, up to a maximum of \$500,000 for each field. This level of funding reflects a meaningful contribution from Council for community recreation facilities, but still requires the group responsible for the development of each field to obtain the bulk of the funding from other sources if the project is to proceed.

It is acknowledged that the proposed level of funding requested of Council would require up to \$1 million in the coming year to support the two fields that are being planned. If this level of funding cannot be provided in the 2009-10 financial year then it is requested that Council consider other options for making this possible. One option would be the provision of a loan to each group for the amount to be provided by Council. The group would pay the appropriate interest rate on the loan for its duration, but each year Council reduces the premium by an agreed amount, thereby spreading the Council contribution out over a number of years.

However, it is hoped that the funding that existed in 2007 within the Council budget for renovations to the Porritt Park Stadium will be the minimum made available to support the development of the first two fields in the coming year. In 2007 Council representatives indicated that the Council funding for the second stage of the Porritt Park Stadium renovations was no longer available for that project as Council felt it was more appropriate to retain that funding for investment into the development of an additional hockey field.

#### Allocation of Council Funding for Artificial Hockey Field Development

The Canterbury Hockey Association would like to establish a partnership with Council to identify the appropriate field development projects to receive Council funding. It is important that any fields developed most effectively address the needs of hockey and therefore factors such as location within Christchurch are important. This process will mean that Council and the Canterbury Hockey Association can work collaboratively to determine the projects to receive support and endorsement.

#### Timeframes

As was indicated in the Metropolitan Sports Facilities Plan submission, the Canterbury Hockey Association would like to see the following timeframes implemented with regard to the development of additional artificial hockey fields:

2009-2010      Two fields are developed, with the Canterbury Artificial Surfaces Trust and St. Bede's College the likely candidates

Then every four years if participation growth in the sport justifies the development of further fields:

2013-2014      Current options would include Hornby Hockey Club or Selwyn Hockey Club/Cashmere High School

2017-2018

2021-2022

...



### Summary

The Canterbury Hockey Association wants to grow the sport of hockey in Christchurch. There is certainly sufficient evidence to indicate that more children and adults want to play the sport, but current field accessibility restrictions deny them that opportunity and will continue to deny them in the future unless provision is made for additional artificial hockey fields in Christchurch.

It is requested that Council amends its Long-Term Council Community Plan to provide funding of additional artificial hockey fields over the coming ten years. Through providing this funding, up to \$2 million, Council will be assisting to address a true need within Christchurch sport.

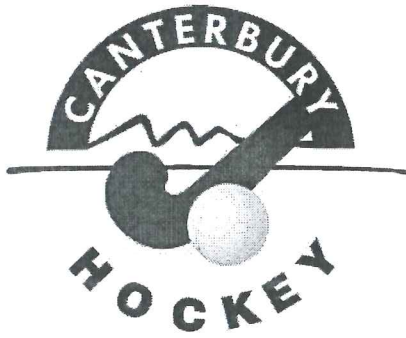
For further information on the content of this submission or to discuss this submission, please contact:

Tim Shannahan  
Chief Executive Officer  
Canterbury Hockey Association  
Phone: (03) 389 9123  
Mobile: 027 246 9661  
Email: [ceo@hockeycanterbury.co.nz](mailto:ceo@hockeycanterbury.co.nz)

The Canterbury Hockey Association wishes to thank the Christchurch City Council for the opportunity to make this submission and also for allowing the hockey community to make submissions. The Canterbury Hockey Association is aware that large numbers of its club representatives and individual players and parents made submissions and the opportunity for these to be considered in the Council process is certainly appreciated as it further highlights the consolidated feelings of the hockey community towards the need for additional artificial hockey fields both now and in the future.

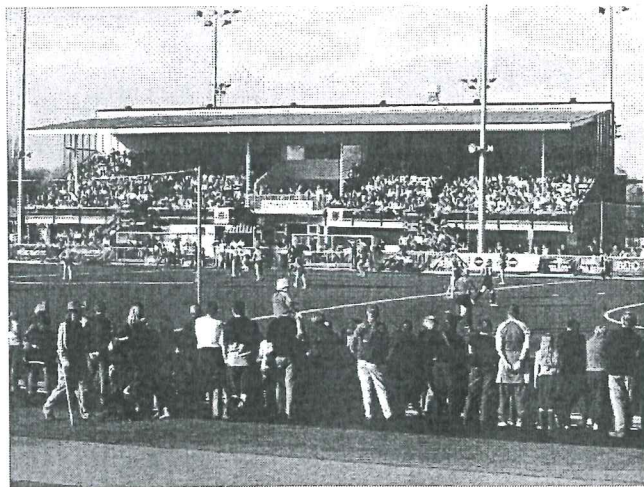


Appendix A  
2008 Canterbury Hockey Association Submission to the Metropolitan Sports Facilities Plan



Canterbury Hockey Association (Inc.)

Submission to the  
Christchurch City Council  
on the  
Draft Metropolitan Sports Facilities Plan (April 2008)



Prepared: May 2008

## Contents

Executive Summary	1
Introduction	2
Current Artificial Hockey Fields in Christchurch	2
Case for Additional Artificial Hockey Fields in Christchurch	3
Strategic Value of Additional Artificial Hockey Fields to Council	12
Value of the Canterbury Hockey Association as a Partner to the Christchurch City Council	13
Multi-sport Outdoor Artificial Surfaces	14
Summary	15
Appendix A: Hockey New Zealand Submission	16
Appendix B: Canterbury Hockey Association Strategic Plan	19
Appendix C: Individual Submissions from Local Hockey Participants	24

### Executive Summary

The Canterbury Hockey Association has identified that the provision of additional artificial hockey fields is its highest priorities. Its members have clearly made it known to the organisation's management that the current shortage of artificial hockey fields can no longer be tolerated as it is detrimental to the future of the sport of hockey in Christchurch. Therefore, it is imperative that provision be made for additional artificial hockey fields in Christchurch both now and in the future.

The Christchurch City Council's Draft Metropolitan Sports Facilities Plan indicates that the provision of one additional artificial hockey field is a medium level priority to the city at this time. That is inconsistent with the perceptions of the hockey community. It does not satisfactorily reflect:

- the needs of existing players to access more time on the fields and do so at socially acceptable hours;
- the needs of those that do not get to play because there is no capacity to accommodate them;
- the needs of the Canterbury Hockey Association to continue to develop players capable of competing on the national or international stage; or
- the needs of Hockey New Zealand to be able to justify hosting major national or international tournaments in Christchurch. (The needs of Hockey New Zealand and the Federation of International Hockey also require upgrades to the existing facilities at Porritt Park, as well as the addition of a further field.)

The Canterbury Hockey Association believes that there is a strong business case that requires Council to reconsider its position with regard to additional artificial hockey fields. The result should be that the final version of the Metropolitan Sports Facilities Plan to be presented to Councilors will identify that the provision of additional artificial hockey fields should be:

- a high priority outcome for Council (Priority '1');
- a stand alone action for Council – rather than tagged on the end of an action description that focuses primarily on a true medium priority, the provision of artificial surfaces for grass-based sporting codes; and
- multiple in nature – with seven additional fields in 20 years realistically required based on predicted growth in participation numbers

The Canterbury Hockey Association looks forward to working with Council to plan and construct this facility infrastructure for the sport of hockey. Hopefully both organisations will be working in partnership to achieve a shared vision for the provision of artificial hockey fields.

### Introduction

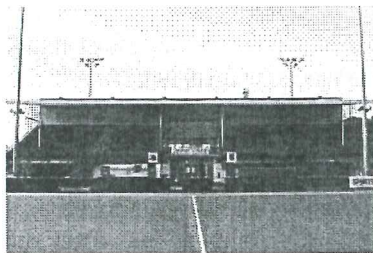
The Christchurch City Council's 'Draft Metropolitan Sports Facilities Plan' represents a long term planning document for the future development of metropolitan sporting facilities in the city. With the sport of hockey now almost exclusively delivered on artificial hockey fields, this plan has significance to the Canterbury Hockey Association, its affiliates and its stakeholders. It is important that the Christchurch City Council's Plan recognises and addresses the needs of the sport and identifies the Christchurch City Council's desire to be a partner to the Canterbury Hockey Association in providing for the facility requirements of the sport. The intent of this submission is to ensure that the Christchurch City Council is fully aware of the expected needs of the sport of hockey for the next 20 years and indicate that the suggested one additional artificial hockey field in that time span, as identified in the Draft Plan, does not cater for the existing needs of the sport, let alone address its likely requirements in 20 years. The Canterbury Hockey Association has a vision to continue to increase its membership and grow the sport locally for the benefit of the Christchurch public, but this can only be achieved through the provision of further artificial hockey fields in Christchurch.

### Current Artificial Hockey Fields in Christchurch

At present there are three artificial hockey fields located in Christchurch. Two of these are water-based fields located at Porritt Park and the other is a sand-based field located at Nunweek Park. (It is worth noting that the facility at Nunweek Park has not been recognised in the Draft Plan, omitted from Table 1 on pages 22-23 and from the map on page 47.)

From the perspective of the Canterbury Hockey Association it is important that these three artificial hockey fields are not viewed as individual fields, but collectively form a metropolitan artificial hockey field infrastructure. They are the hubs for the sport of hockey within Christchurch and hopefully in time the addition of further artificial hockey fields at these locations will better reflect this position. Their status as metropolitan sports hubs is supported by the location of both parks close to ring roads, with good parking and access to public transport and cycle pathways.

All three fields are considered to be at full capacity in the winter months with in excess of 54 hours use on all three fields per week. This equates to use from 4pm to 10pm weekdays and 8am to 10pm on weekends, with other hire occurring either regularly or as one-off bookings between 9am and 4pm on weekdays. There is also considerable use in the summer months. This amount of usage further supports the consideration of the fields as a metropolitan artificial hockey field infrastructure, with the fields operating in the same manner as many metropolitan indoor sports facilities in terms of hours of operations, bookings prioritisation and use at all levels of the sport from local players through to international fixtures. This also means that the changing rooms and other facilities at the parks are used in a manner more similar with indoor facilities, resulting in greater use and therefore with greater need for ongoing maintenance and upgrade.



Porritt Park



Nunweek Park

### Case for Additional Artificial Hockey Fields in Christchurch

The Canterbury Hockey Association considers it necessary to challenge the content of the Draft Plan. Specifically it is necessary to challenge the suggestion that one additional artificial hockey field alone is adequate and that the current need for any additional fields, whether it be just one or multiple fields, is a medium level priority. Neither of those suggestions is consistent with the reality that faces the sport of hockey in Christchurch. The reasons why multiple artificial hockey fields must be included in the final Plan and be given the highest priority (Priority '1'), and by default therefore become a separate action independent of the need to provide artificial surfaces for other sports, are:

- Current artificial hockey fields are used to capacity

As already identified, the existing three artificial hockey fields are at capacity. They are used to such an extent during the winter months that teams must conduct practices and play weekly matches at times that are not considered suitable, but such is the limited space available that it is simply accepted as a requirement of the sport. Examples of the unsuitable nature of field allocations at present include:

- primary school teams starting matches at 8am on Saturdays;
- high school and senior teams having to play matches that start as late as 9pm on Friday, Saturday and Sunday nights;
- high school and senior teams having to commence practice sessions at 9pm on weekdays

The addition of further artificial hockey fields would address these issues as the increased capacity would allow for teams to not have to practice or play at times that are simply not suitable, at least until such time as capacity is reached on any additional artificial hockey fields.



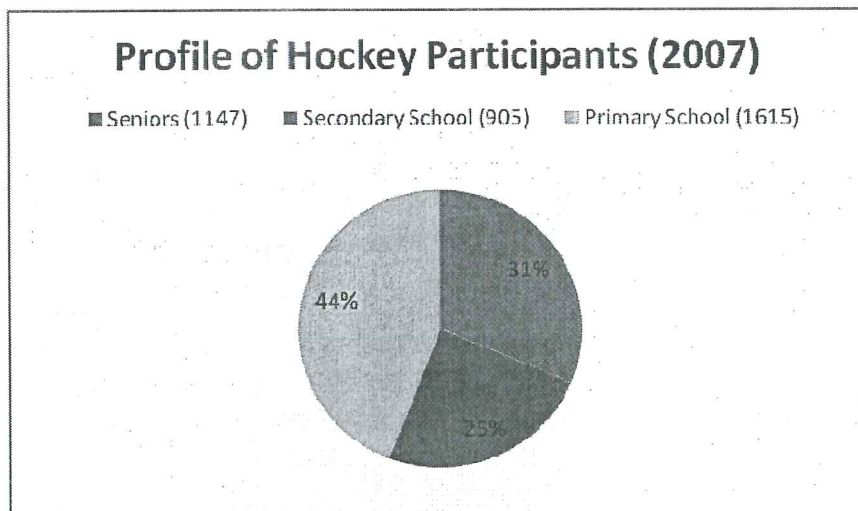
- Current users have demand for use of the artificial hockey fields that can not be met
- Further evidence that there is an immediate need for additional artificial hockey fields exists in the number of requests received for training slots in 2008. The number of requests that could not be accommodated was sufficient to have filled four weeknights (4pm to 10pm) on an extra artificial hockey field. It must also be recognised that many affiliated clubs did not apply for training slots for many of their teams on the basis that it was known, based on experiences in previous years, that those requests could not be accommodated and therefore were not worth

submitting. This adds weight to the suggestion that if an additional artificial hockey field was available immediately, it could be used to capacity on weeknights.

Some of the other sporting codes that appear to be seeking and potentially receiving additional facilities as indicated in the Draft Plan may be indicating they need new facilities. This need may be because it has become time to replace older facilities deemed to be no longer fit for their intended purpose. Alternatively, the need may reflect a desire to have matches played at multi-court venues for ease of operations in delivering competitions. This level of 'need' cannot be considered comparable to the situation hockey faces whereby it has absolutely no other facilities to deliver the sport. No other artificial hockey fields exist in Christchurch that can be used to assist in coping with the current facility deficit.

- There is no potential for the sport to grow and potential players are being turned away  
Not surprisingly, given the sport can not adequately service all of its existing membership on the current three artificial hockey fields in Christchurch, there is virtually no potential for the sport to grow its membership. That many affiliated clubs close their books to new registrations each pre-season and in effect turn new members away is a sad reflection on the current situation. Aware that competitions can not accommodate additional teams due to a lack of field availability, affiliated clubs simply maintain their existing teams, capable of only replacing any members who have left the club since the end of the previous season.

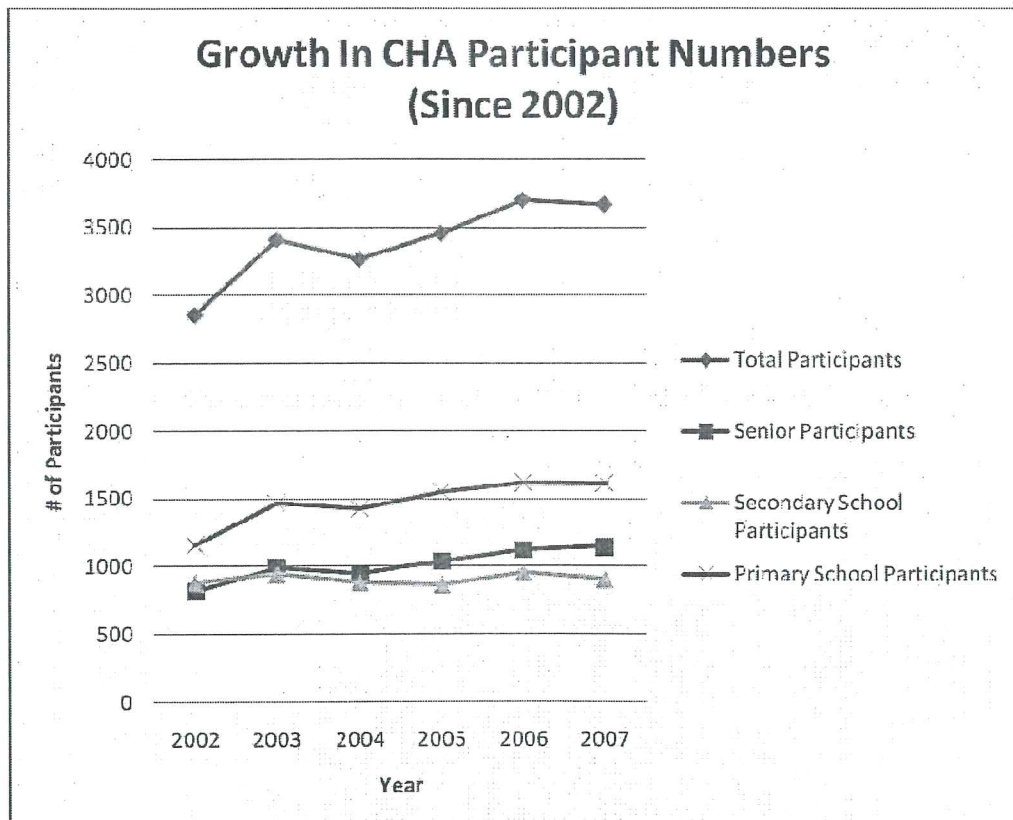
Each year a number of clubs receive sufficient approaches from potential new members to form entire additional teams, but simply have to inform these individuals that they can not be catered for due to the inability of the clubs to register new teams in Canterbury Hockey Association competitions. Most of the players that are penalised as a result are children. In excess of 2,500 children (aged 5 to 18) play in local competitions, which equates to more than two-thirds of registered participants, but this number could be much higher if clubs could accommodate all approaches received from interested players. Preventing children from playing sport is certainly not a desired position, but is a reality of the current situation.





- The sport has experienced growth of 30% since the last artificial hockey field was laid in 2002, but can grow no further

In the four years from 2002 to 2006 the sport experienced membership growth of 30% (2002 – 2856 members; 2006 – 3701 members), with the 3701 members in 2006 considered at capacity for the current three artificial hockey fields. The sport reached a point where it could no longer actively promote itself to the community as it could not accommodate any further members.



The potential for further growth exists, as highlighted in the above point by the situation whereby affiliated clubs are turning away potential members, but is very much dependent on the provision of further artificial hockey fields. It is strongly believed that similar growth to that experienced in the four years following the introduction of a second artificial hockey field at

Porritt Park could be expected moving forward and therefore a possible schedule could be the installation of a new artificial hockey field every four years to keep pace with participation growth. This would mean that the final Plan should identify the need for at least five additional artificial hockey fields in the next 20 years and based on the need for an additional two fields immediately, seven artificial hockey fields would seem reasonable.

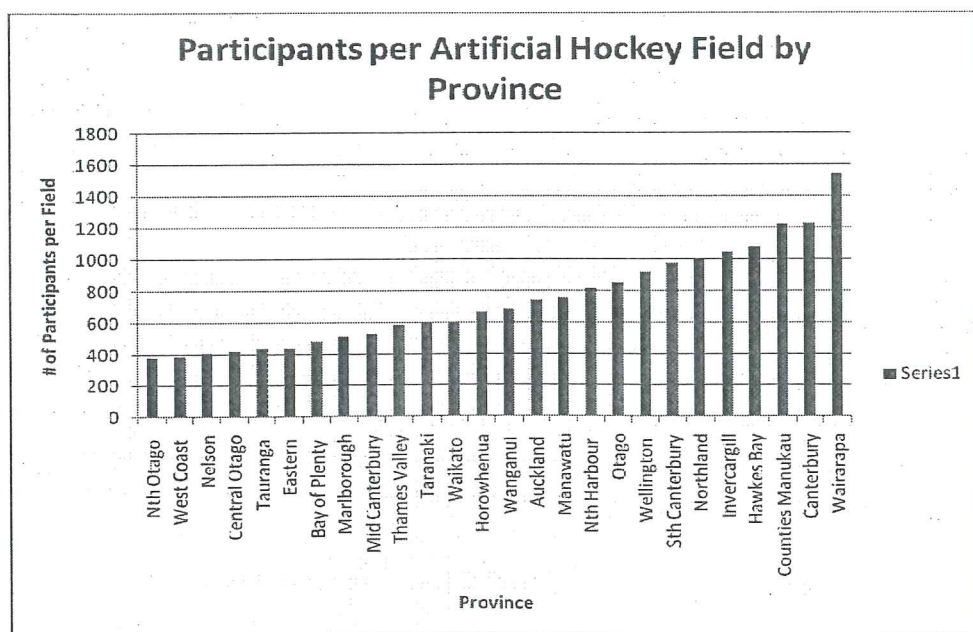
As the Draft Plan clearly states that any Council financial contribution will be determined through the 2009-2019 LTCCP process, it would seem there is no negative for Council to identify a number of additional artificial hockey fields that better reflects the requirements expected in the 20 year time frame. A possible schedule to include in the final Plan could be:

- 2009 – 2 additional artificial hockey fields
- 2013 – 1 additional artificial hockey field
- 2017 – 1 additional artificial hockey field
- 2021 – 1 additional artificial hockey field
- 2025 – 1 additional artificial hockey field
- 2029 – 1 additional artificial hockey field

- The ratio of players to artificial hockey fields is amongst the highest in the country and the worst of all major cities

The Hockey New Zealand recommendation with regard to artificial hockey fields is one turf to every 600-800 members. With current membership of 3,667 this formula would suggest there should currently exist between five and seven artificial hockey fields in Christchurch. The current ratio in Christchurch of one artificial hockey field to every 1222 members is the second highest ratio in the country (Wairarapa Hockey Association is 1 field:1538 members). The ratio in other major centres is:

North Harbour	1:816 (with 5 fields)
Auckland	1:740 (with 6 fields)
Hamilton	1:603 (with 5 fields)
Wellington	1:918 (with 4 fields)
Dunedin	1:851 (with 2 fields)



Other centres have the capacity for growth and are growing. A more acceptable ratio must be achieved in Christchurch and then maintained through ongoing development of additional artificial hockey fields to keep pace with growth.



- Additional fields at Porritt Park and/or Nunweek Park are required to allow the existing fields to be financially viable for the Canterbury Hockey Association, rather than the current ongoing drain on finances

The existing fields are managed by the Canterbury Hockey Foundation Trust (CHFT), who by way of a Management Agreement, pass on the daily operational management of the facilities to the Canterbury Hockey Association. The annual cost to the Canterbury Hockey Association associated with the payment of debts related to these facilities, as well as their upkeep and maintenance, amounts to around \$330,000 per year. The major annual costs currently incurred are:

- |                                      |           |
|--------------------------------------|-----------|
| • Servicing of CHFT debt             | \$115,000 |
| • Salaries of three facilities staff | \$ 83,000 |
| • Maintenance                        | \$ 47,000 |
| • Electricity & gas                  | \$ 40,000 |
| • Insurance                          | \$ 11,000 |

The servicing of CHFT debt is an ongoing expense. The current debt relates to loans taken to pay for the replacement of the artificial surfaces on these fields in recent years. Final payment of this debt will coincide with the need to progressively replace those surfaces again, resulting in the need to finance new loans and begin the debt servicing process once again.

This creates a situation whereby the current three artificial hockey fields are not financially viable due to the regular replacement costs of the artificial surface and shock pad beneath the surface. Based on a new artificial surface costing around \$300,000 and a shock pad costing \$200,000, a reasonable replacement schedule (applying recommended product life to the various components), with associated costs, for the existing fields over the next 30 years would be:

Year	Works	Cost
2008		
2009		
2010	Replace artificial surface on Porritt Park #2	\$300,000
2011		
2012	Replace artificial surface on Porritt Park #1	\$300,000

2013		
2014		
2015		
2016	Replace artificial surface & shock pad on Nunweek Park	\$500,000
2017		
2018	Replace artificial surface & shock pad on Porritt Park #2	\$500,000
2019	Replace artificial surface & shock pad on Porritt Park #1	\$500,000
2020		
2021		
2022		
2023		
2024	Replace artificial surface on Nunweek Park	\$300,000
2025	Replace artificial surface on Porritt Park #1	\$300,000
2026	Replace artificial surface on Porritt Park #2	\$300,000
2027		
2028		
2029		
2030		
2031	Replace artificial surface & shock pad on Porritt Park #1	\$500,000
2032	Replace artificial surface & shock pad on Nunweek Park	\$500,000
2033		
2034	Replace artificial surface & shock pad on Porritt Park #2	\$500,000
2035		
2036		
2037		
<b>Total</b>		<b>\$4.5 million</b>

The above table shows that over the next 30 years the resurfacing costs to maintain the existing three artificial hockey fields will be in the vicinity of \$4.5 million. This equates to an annual average cost of \$150,000. Although there is the possibility of accessing funds to assist with these capital projects each year they occur, assuming that no such funds are obtained, the annual cost of \$150,000 (plus interest) would be beyond the current capabilities of the Canterbury Hockey Association, especially given it is a struggle to come up with the present required annual cost of \$115,000 payable to the CHFT to allow that organisation to service the existing debt. There is no capacity to generate significant additional revenue from the hire of the fields, making the \$35,000 annual shortfall an untenable situation.

The Canterbury Hockey Association has calculated that two further artificial hockey fields located at Porritt Park and/or Nunweek Park would provide sufficient revenue to make the ongoing replacement of five artificial hockey fields financially viable. Based on the fact that each artificial hockey field is capable of generating around \$100,000 of revenue per year, and has replacement costs of \$50,000 per year (\$800,000 for two surface replacements and one shock pad replacement averaged across the 16 year period over which those replacements would occur), that leaves \$50,000 surplus per field. Deduct overheads of \$15,000-\$20,000 per field associated with maintaining those fields at Porritt Park or Nunweek Park, based on no significant increase in staff salary costs as staff are already employed at those parks, and the \$70,000 profit generated would cover the shortfall that exists with the current three fields and allow scope for faster repayment of loans. At some point in the future it is possible that the accumulation of profit would allow for ongoing replacement costs to be paid at the time and remove the requirement for a loan facility.

- The current facilities do not maximise possible national tournament hosting potential  
To be considered as a host for Hockey New Zealand national tournaments an association must have available at least two water-based artificial hockey fields. The quality of the two fields at Porritt Park means Christchurch is one of Hockey New Zealand's preferred venues for holding national tournaments. However, there are a range of major tournaments that Christchurch could host or could host more frequently if there were additional fields at Porritt Park.

The National Masters tournament is the largest national hockey tournament in New Zealand and at present Christchurch hosts this event once every five or six years. Given Christchurch is the only South Island location at which this event can be hosted, if Porritt Park had at least three fields this tournament could possibly be held in Christchurch every three or four years, which would have significant benefits to the local community. There are also a range of Oceania, Pan-Pacific and other international tournaments for club and provincial teams that Christchurch could consider bidding for if there were at least three quality fields at Porritt Park.

There are also a range of tournaments that the Canterbury Hockey Association hosts annually over a number of long weekends that could be larger and involve more non-Christchurch teams attending if more fields were available. Christchurch's locality in the middle of the South Island logically lends itself to be a focal point for the hosting of South Island tournaments and therefore attracts greater numbers of teams from throughout the South island. Just as the lack of fields impacts on local participation, it also restricts entries to various tournaments as the lack of fields restricts the matches played by each team and as a result many teams opt not to attend. This not only costs the Canterbury Hockey Association revenue, but costs the Christchurch business sector.

Furthermore, when tournaments are held in Christchurch, local teams and players are required to forgo their own regular fixtures to make way for the field requirements of the tournaments. By introducing additional fields it would provide scope for fewer disruptions to local competitions throughout the season.

- The current facilities are not adequate to ensure Christchurch will host international tournaments

The Federation of International Hockey (FIH) has indicated to Hockey New Zealand that they only desire one major hockey centre in New Zealand being used for hosting of international tournaments. No facility in New Zealand currently meets FIH standards and it would put Christchurch in a very strong position if Porritt Park was to be upgraded to the required standards to be the FIH endorsed venue in New Zealand. With the current world rankings of the New Zealand teams it is plausible to suggest that New Zealand could host one major international tournament every three years. (If New Zealand teams finish in the top six at this year's Olympics that will cement their positions in the elite top six nations for the next few years).

The value of being the endorsed FIH venue in New Zealand would have significant benefits to Christchurch, in the same way any major international sports event that is televised worldwide would have for Christchurch. The Christchurch City Council is urged to consider its interest in achieving this outcome and enter into discussions with the Canterbury Hockey Association and Hockey New Zealand if it wishes to explore this option. Such discussions would not only indicate the need for an additional field at Porritt Park, but would require improvements and

additions to the overall facilities, including improved and additional changing rooms, an indoor viewing area, capacity for increased spectator seating and improved media facilities.

If this concept is of interest to the Christchurch City Council, this process could involve obtaining the FIH international tournament venue specifications; costing the value of the required upgrades; preparing a proposal outlining the proposed upgrades; and submit the proposal to HNZ and FIH (via HNZ) indicating that if Porritt Park was endorsed for an agreed period of time as the only venue in New Zealand permitted to host major international tournaments that the proposed upgrades would proceed.



- The risk of Canterbury no longer producing elite athletes to represent the province and New Zealand

Canterbury has a proud tradition as the most successful hockey province in New Zealand in relation to winning national titles and having players selected for national teams. As the letter from Hockey New Zealand included as Appendix A indicates, the 1976 New Zealand men's team that won Olympic gold was well represented by players from Canterbury, and this has been standard for a number of years. In the past twelve months Canterbury teams have medaled at 19 of 26 national tournaments. However, by not increasing the player pool from which to select potential elite athletes at a time when other provinces are growing at significant rates, it would be logical to expect that the current levels of performance cannot continue.

Not only is the player pool not growing, but representative teams are struggling to have adequate quantity and quality of training sessions in their preparations for national tournaments. Given the demand from club teams for what limited training times are available on weeknights during the winter, representative teams are forced to train on half or even a third of a field. This is simply not conducive to delivering appropriate training sessions to get the best results from these teams on the national stage.

Hockey New Zealand are also questioning the validity of Christchurch being a high performance centre for the national program if additional fields do not become available (see Appendix A). Hockey New Zealand are contemplating a high performance centre in association with Academy South, based primarily out of QEII, but which would use the fields at Porritt Park for training purposes. However, if athletes cannot access a field at Porritt Park in the evenings to engage in training sessions, then Hockey New Zealand will likely not include Christchurch as a high performance centre.

- The importance of this message to potential partners in artificial hockey field projects over the coming 20 years

It has been identified that current growth rates would support the need for between five and seven additional artificial hockey fields in the next 20 years. The Canterbury Hockey Association is realistic in that it can only afford to be a financial contributor, either directly or through the raising of funds from community and gaming trusts, to two additional fields in that timeframe. Therefore it is necessary to encourage other entities to be the primary partners in the development of as many as five other fields.

At least one school in Christchurch is in the process of scoping the option of constructing a field on their school grounds and once constructed it is hoped that other schools may follow suit. There are several examples in other major New Zealand metropolitan centres where as soon as one school constructed a field, others quickly followed. However, schools in Christchurch will need to believe that the construction of a field has merit on several levels and being able to refer schools to a Christchurch City Council Plan that indicates additional fields are required would be of considerable value. Having the need for these fields in the Plan would also be of benefit to schools or other partners in their applications to community and gaming trusts to source funding for their respective construction project. Therefore, it is seen as critical to the Canterbury Hockey Association that the Plan identifies the need for up to seven fields in the next 20 years.

- Consistent with the Canterbury Hockey Association's Strategic Plan

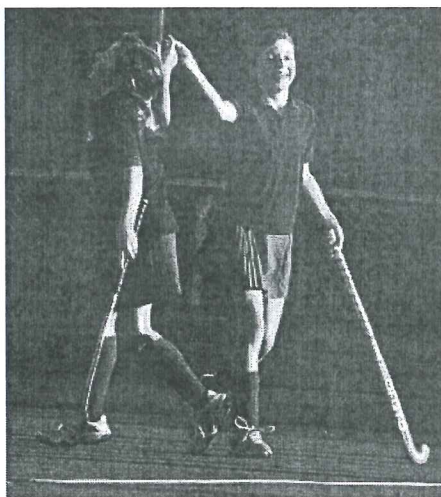
The Canterbury Hockey Association has been aware of all of the above listed valid reasons for additional artificial hockey fields in Christchurch since 2006 when capacity was reached on the existing three fields. The Strategic Plan of the Canterbury Hockey Association (included as Appendix B) clearly indicates that one of the major strategic priorities of the organisation is the attainment of additional fields. That the provision of additional fields is included in the organisation's guiding document highlights that this is truly a priority for the sport of hockey. Can the same be said for some of the other sporting codes set to benefit from the facilities identified in the Draft Plan?

### Strategic Value of Additional Artificial Hockey Fields to Council

Having presented the reasons the Canterbury Hockey Association has for requiring a number of additional fields in the next 20 years, it is important that Council recognises the synergies between its own strategic goals and the provision of additional artificial hockey fields in Christchurch.

Council has indicated that it is committed to providing sporting facilities that allow for participation in sport and physical activity, whether that be at a local, national or international level. The explanations provided in the previous section illustrate that additional fields are required to allow for greater participation across all three levels. It is also important to recognise that whereas other sports are requesting additional or improved facilities to allow for more convenient or improved quality of facilities for the delivery of sport, the basis for additional artificial hockey fields is primarily as a result of having reached capacity at its existing facilities and having no option other than to obtain additional fields. Council has indicated that one of its highest priorities is to ensure existing facilities are being maximised in their use before investing in additional facilities. On this basis the provision of additional artificial hockey fields is a priority.

The case for additional artificial hockey fields also has strong ties to Council's desire to see local residents engage in sport activities and Council being a primary partner in providing the means to allow this to occur. Council also states it wishes to provide for the needs of the local community and the need for additional artificial hockey fields is a very genuine need. Furthermore, allowing the Canterbury Hockey Association to cater for greater numbers of hockey participants assists Council to achieve its stated outcome of encouraging healthy and active lifestyles for local residents.



The provision of additional artificial hockey fields is also in alignment with current Council policies, strategy documents and plans, including, but not limited to, the following:

- Recreation and Sport Policy 1996
- Physical Recreation and Sport Strategy 2002
- Events Strategy 2007
- Strengthening Communities Strategy 2007
- Urban Development Strategy

Given the need for additional artificial hockey fields is strongly aligned with Council's own goals in relation to the provision of metropolitan sports facilities, it is disappointing that the provision of additional artificial hockey fields is rated as a priority '2' by Council. It is a further disappointment that the provision of additional artificial hockey fields does not even register as a separate action within the Draft Plan, instead being linked to a summary statement relating to artificial fields in general across multiple sports. On the basis of the information presented it would seem appropriate to make the provision of additional artificial hockey fields a separate action in the final Plan and provide it with a priority '1' rating.

In discussions with one Council representative it was indicated that a major component in determining the priority ratings in the Draft Plan was the carryover of unfinished projects from the Recreation and Sports Facilities Strategy 2003. Those projects that were carried over were regarded as priority '1' in the Draft Plan, with other actions receiving priority '2' or '3' ratings. This would clearly disadvantage hockey which was not included in the 2003 document as it had only recently installed a new artificial hockey field and therefore was considered at that time to have adequate fields to service its membership. Given circumstances have changed so markedly since 2003 as a result of a 30% growth in participant numbers, it would be remiss of Council to not assign the sport the priority rating it deserves, priority '1', in the final Plan.

Council must also consider the assignment of a priority '1' rating to hockey on the basis that all of the key issues Council has identified in the Draft Plan that support the positioning of netball and basketball as high priority at this time are just as applicable to hockey. There are not appropriate facilities to support the hosting of major tournaments at a time the opportunity to host major national and international tournaments exists and there is a deficit in the number of fields to the growing number of participants as a result of significant growth in recent years.

#### Value of the Canterbury Hockey Association as a Partner to the Christchurch City Council

In the Draft Plan it is clear that Council wishes to establish partnerships with sporting organisations that service the Christchurch metropolitan area. A continuation of the existing partnership with the Canterbury Hockey Association will be mutually beneficial to both organisations. Beneficial to the Canterbury Hockey Association as much needed additional fields will be developed and beneficial to Council as its investment will achieve an outcome that will serve as a legacy of Council's desire to provide facilities that are used long-term to deliver participation opportunities to the Christchurch public.

The Canterbury Hockey Association understands the importance of facilities, and in combination with the Canterbury Hockey Foundation Trust, has been managing metropolitan hockey facilities for a number of years. That the existing facilities have been managed to a high standard and in a manner that has seen the Canterbury Hockey Association meet the financial obligations this has entailed, should clearly indicate that the organisation has the capacity to take on more responsibility with the addition of further artificial hockey fields.

At a time when other regional sporting organisations based out of Christchurch are performing poorly in relation to their governance and/or financial management, and are not ideally suitable partners for the Council if it wishes to ensure projects are successfully delivered, the Canterbury Hockey Association represents an organisation with which Council can confidently partner. Any investment from Council, in combination with the Canterbury Hockey Associations own investment and the overall governance of the Canterbury Hockey Foundation Trust, will achieve desired outcomes.

#### Multi-sport Outdoor Artificial Surfaces

It is appropriate to indicate that the Canterbury Hockey Association could be a significant partner to Council in its desire to establish multi-sport outdoor artificial surfaces. The Canterbury Hockey Association has experience in the management of artificial surfaces and staff that are trained in the maintenance and care of these surfaces. By establishing multi-sport artificial surfaces at Porritt Park and Nunweek Park, where existing facilities staff are employed by the Canterbury Hockey Association, there would be significant annual savings on the ongoing overheads associated with such surfaces. This is the same reasoning put forward for why Porritt Park and Nunweek Park must be home to the next two artificial hockey fields to be managed by the Canterbury Hockey Association.

There are apparently artificial surface products that have been endorsed by the International Rugby Board (IRB) and the Federation of International Football Associations (FIFA) that are considered suitable for lower level, junior hockey. The installation of such fields would meet the training and playing needs of rugby, rugby league and football and could also be utilised by hockey. Clearly they would not be ideal for the majority of hockey, but an adequate amount that Council should investigate further this option. Establishing these fields at Porritt Park and Nunweek Park may also be a means to avoid concerns over equitable access between the football codes as none of them would be managing the field(s).

Another option available to Council, if artificial fields for other codes were developed at venues other than Porritt Park and Nunweek Park, would be to establish a management agreement with the Canterbury Hockey Association for the management of those facilities. Individual fields could not justify the employment of a full-time staff member to manage the maintenance and care of those fields. However, the existing facilities staff employed by the Canterbury Hockey Association could use their expertise to assist in this capacity.

### Summary

The Canterbury Hockey Association wants to grow the sport of hockey in Christchurch. There is certainly sufficient evidence to indicate that more children and adults want to play the sport, but current field accessibility restrictions deny them that opportunity and will continue to deny them in the future unless provision is made for additional artificial hockey fields in Christchurch.

The Canterbury Hockey Association is excited by the opportunity to work in partnership with the Christchurch City Council to rectify this situation. Working together, both organisations can achieve outcomes that are valued by the Christchurch public and reflect positively on the ability of both organisations to deliver sustainable sporting facilities. For both organisations, this is the time to step up and deliver a legacy that will be valued for decades by the city of Christchurch.

For further information on the content of this submission or to discuss this submission, please contact:

Tim Shannahan  
Chief Executive Officer  
Canterbury Hockey Association  
Phone: (03) 389 9123  
Mobile: 027 246 9661  
Email: [ceo@hockeycanterbury.co.nz](mailto:ceo@hockeycanterbury.co.nz)

The Canterbury Hockey Association wishes to thank the Christchurch City Council for the opportunity to make this submission and also for allowing the hockey community to make submissions. The Canterbury Hockey Association is aware that large numbers of its club representatives and individual players and parents made submissions and the opportunity for these to be considered in the Council process is certainly appreciated as it further highlights the consolidated feelings of the hockey community towards the need for additional artificial hockey fields both now and in the future.

Appendix A: Hockey New Zealand Submission



27 May 2008

Draft Metropolitan Sports Facilities Plan  
Recreation and Sports Unit  
Christchurch City Council  
PO Box 237  
Christchurch 8011

Dear Sir/Madam

**Re: Christchurch City Council Draft Metropolitan Sports Facilities Plan**

The Canterbury Hockey Association has been one of New Zealand Hockey's major Association's for over a century. The culture, tradition and playing performances of Canterbury's age group and senior representative teams are second to none over this long history.

Canterbury players have always been well represented in national teams. The 1976 Gold Medal winning Men's Hockey Team alone consisted of no fewer than seven players from Canterbury. Even the Coach was from Canterbury. The current Men's and Women's Black Sticks, Junior Black Sticks and national age group teams continue to have a good representation of Canterbury based hockey players.

The Canterbury Hockey Association currently has two international quality artificial hockey surfaces at Porritt Park and one wet-dressed surface at Nunweek Park. The surface at Nunweek Park would not be preferred for international matches. For a region boasting almost 3,700 hockey players, the Hockey Association in Canterbury is hamstrung in terms of providing adequate time and space for their current membership.

National players and even senior club players are frustrated by having to practice on a third of the field or being required to practice at times that are not conducive for the development of elite athletes. There is no other area in the country where elite hockey players are required to train on an area of less than half a field.

Elite players are hampered by the current situation in Christchurch. In Auckland there are six artificial hockey surfaces and in North Harbour there are five.

Currently the Black Sticks squads do not have camps in Christchurch because of the lack of suitable turf time available to them.

We are pleased to acknowledge the support of:



Hockey New Zealand wants to establish Canterbury as one of the major high performance centres in the country. Sadly, if the elite players cannot get adequate time or space on an artificial surface then this prevents Canterbury from becoming a high performance centre. The supply does not meet demand.

The lack of artificial hockey surfaces in Canterbury was identified as one of Hockey New Zealand's red flag items at the 2007 Annual General Meeting.

Hockey New Zealand is extremely disappointed that an additional artificial hockey field is not considered a high priority for the Council. We ask you to review this.

Without another international quality artificial hockey surface it is unlikely that international events involving six or more teams could be hosted in Christchurch. At the recent Men's Olympic Hockey Qualifying Tournament in North Harbour, all three international quality hockey surfaces at their venue were necessary to cater for team training and practice matches.

There is certainly evidence to indicate that there is growth of the sport when additional artificial surfaces are put down in major centres.

We also believe that when Hockey in the Auckland, Wellington and Canterbury regions is strong then New Zealand Hockey remains strong. Hockey New Zealand cannot afford not to have Canterbury Hockey as a high performance centre. The longer Canterbury Hockey remains without an additional artificial hockey surface the more likely Auckland and Wellington will move ahead.

We ask you to reconsider not having an additional artificial hockey surface as a high priority in your draft Metropolitan Sports Facilities Plan.

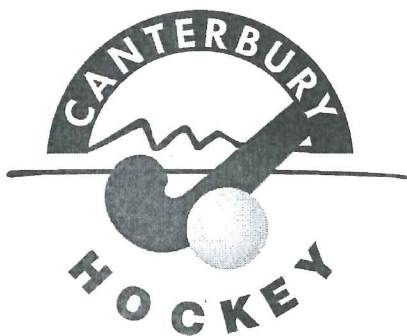
If you require further clarification or information on this submission I ask you to contact me urgently.

Yours sincerely



**Ramesh Patel**  
**Chief Executive**

Appendix B: Canterbury Hockey Association Strategic Plan



**Canterbury Hockey Association Inc.**

**Strategic Plan: 2008-2012**

**'Securing Hockey's Turf'**

## **Introduction**

The Canterbury Hockey Association Inc. is the organisation responsible for the management and delivery of the sport of hockey to the people of Canterbury.

'Securing Hockey's Turf' is the strategic plan adopted by the Canterbury Hockey Association to define its future direction as it seeks to advance the sport of hockey within Canterbury. The aims identified challenge the organisation to obtain higher levels of success, both on and off the field, and therefore provide a sustainable long-term future for Canterbury hockey.

Hockey in Canterbury is well positioned to undertake the challenges presented by the identified aims. Success will see the Canterbury Hockey Association 'secure its turf', both literally and metaphorically. Literally, the sport will be better positioned to maintain existing turf facilities, develop additional turf facilities and provide improved financial viability for the ongoing costs associated with maintaining these facilities. Metaphorically, in an ever changing recreation and leisure market, the sport will increase its share within this market, thereby achieving increased participation by the public and investment from various funding sources. This requires the provision of quality services that both retain existing participants in addition to attracting new participants.

The identified aims within this strategic plan are presented under four key business areas. These key business areas are:

- Leadership & Management
- Participation & Development
- High Performance
- Facilities

This strategic plan is supported by annual and quadrennial operational plans that identify the priority tasks that will be undertaken to enable success.

## **Our Mission**

To enable Cantabrians to participate in quality hockey experiences.

## **Leadership & Management**

The Canterbury Hockey Association will provide leadership for the sport of hockey through effective management of the resources of the sport. The financial, human, physical and technology resources available will be utilised to deliver the sport a strong and sustainable future in Canterbury.

To this end, the strategic aims of the Association in relation to Leadership & Management are:

- Ongoing engagement of a governance-focused Board of Management
- Uphold and promote the existing reputation as one of New Zealand hockey's and Canterbury sport's foremost organisations
- Ensure sustainable operational performance through the use of best-practice processes
- Optimise financial capacity by maximising returns from available revenue opportunities
- Maintain and expand role and influence within the realms of hockey in New Zealand and Canterbury sport
- Adopt and implement strategies to manage identified risks
- Develop and maintain a culture of open and dynamic communication with stakeholders

## **Participation & Development**

The Canterbury Hockey Association will develop and deliver opportunities to enable participation in the sport of hockey. This requires the provision of a structure that allows all interested players, coaches, umpires and administrators to not only engage, but also develop and achieve their potential within the sport.

To this end, the strategic aims of the Association in relation to Participation & Development are:

- Develop, implement and deliver a range of participation programs that collectively cater for the interests of players, coaches, umpires and administrators
- Provide a supportive environment within the sport to encourage a life-long engagement by participants
- Coordinate and administer the provision of education and development programs to support the training of coaches, umpires and administrators
- Support and encourage the implementation of best-practice processes by affiliated clubs and schools.
- Achieve continual quantitative growth in participants within the sport

## High Performance

The Canterbury Hockey Association will deliver a high performance program that enables continued success on the national and international stage by local participants. Canterbury Hockey has a proud tradition of being Canterbury's most successful sport and also New Zealand hockey's most successful province in terms of national titles won. The opportunity to represent Canterbury has also been a significant benefit to many players who have gone on to represent New Zealand. These successes have many tangible and intangible benefits to Canterbury Hockey and must continue to be achieved.

To this end, the strategic aims of the Association in relation to High Performance are:

- Implement and sustain clear pathways for the development of talented athletes
- Provide opportunities for talented athletes, of all ages, to engage in elite development opportunities that will enhance their ability to perform at representative levels
- Ensure local competition structures facilitate elite athlete development and preparations for representative competition
- Develop and maintain a pool of elite coaches, umpires and administrators to support the delivery of high performance outcomes
- Achieve continued success at representative competitions, particularly Hockey New Zealand national tournaments
- Recognise the accomplishments of players, coaches, umpires and administrators that achieve national honours

## Facilities

The Canterbury Hockey Association will ensure that the facilities available to the sport are both suitable for the needs of the sport and in sufficient capacity. The sport of hockey has evolved to the point that the majority of local competitions in New Zealand are played on sport-specific turf fields. Canterbury Hockey currently has access to turf fields at Porritt Park and Nunweek Park. (At some levels the sport is still played on grass fields, made available by the Christchurch City Council.) In addition to the turf fields, Canterbury Hockey has access to other structures at Porritt Park and Nunweek Park in the form of grandstands, changing rooms, lounges, shops and offices and use of all of these must be maximised to benefit the hockey community.

To this end, the strategic aims of the Association in relation to Facilities are:

- Development of additional facilities to meet demand in excess of capacity of the existing facilities
- Provide support and assistance to the Canterbury Hockey Foundation Trust in the management of the facilities at Porritt Park and Nunweek Park
- Maintain the available facilities to ensure the condition remains suitable for the requirements of the sport
- Maximise the use of the available facilities by both the hockey community and other potential users

Appendix B  
2008 Additional Information Requested by Councillors to the Metropolitan Sports Facilities Plan  
Submission

## Tim Shannahan - CHA Chief Executive Officer

---

**From:** Tim Shannahan - CHA Chief Executive Officer  
**Sent:** 5 August 2008 6:12 p.m.  
**To:** 'Collier, Kevin'  
**Cc:** Richard Munt - CHA Chairman  
**Subject:** Follow-up to Council Presentation on MSFP - Hockey

Hi Kevin,

Could you please forward the following information on to Councillors. It is information that I felt they requested of me during my presentation on Friday and wish to provide it in a written format for their future reference:

### Christchurch vs. Non-Christchurch Participants

Total Teams – 307  
Christchurch Teams – 292 (95.1%)  
Non-Christchurch Teams – 15 (4.9%)

Total Participants – 3,724  
Christchurch Participants – 3,508 (94.2%)  
Non-Christchurch Participants – 216 (5.8%)

### Artificial Turf : Participant Ratios for Major Cities

The following figures are estimates of the ratio of participants to each turf in the major cities in New Zealand, based on the provincial figures presented in the original submission, but modified following an indication as to how many of those artificial turfs are within the major metropolitan centre and estimates received from each major association as to how many participants would actually reside in the metropolitan area:

Hamilton City 1:440  
North Shore City 1:740  
Dunedin City 1:851  
Auckland City 1:888  
Wellington City 1:1,020  
Christchurch City 1:1,169

### Location of Turfs in Canterbury

As indicated there are only three artificial hockey turfs in Canterbury and all three of these are in Christchurch (two at Porritt Park and one at Nunweek Park). The participation numbers in the Selwyn and Waimakariri Districts could not presently justify the development of an artificial turf in either district and without significant growth in either district it may still not be feasible in twenty years to have an artificial turf located in either district.

The Canterbury Hockey Association will be making submissions to both of these district councils seeking financial contributions in the future towards the existing turfs in Christchurch which are of benefit to their residents, and hopefully in the future participation numbers in each district will justify the development in both districts of an artificial turf.

### Financial Benefit of Artificial Turfs to Council

As indicated during the presentation, the following are financial figures in relating to the benefit to Council of having hockey played on artificial turfs as opposed to grass fields:

Cost of an artificial turf - \$1.5 million to install and then ongoing maintenance of \$50,000 per year to cover turf and shock pad replacements

Cost of maintaining a grass field by Council - \$12,500 per year

On the basis of these figures, and in the knowledge that usage of an artificial turf is equivalent to 15 grass fields, an artificial turf becomes more cost effective than 15 grass fields for Council after approximately 10 years of use. That 10 year theory is based on Council paying the full installation and maintenance costs associated with an artificial turf. Where Council does not cover these costs in full, as has been the case with all three of the existing artificial turfs and is likely to be the case with future artificial turfs that may be developed, it takes even less than 10 years for Council to gain cost effectiveness. Recently the Palmerston North City Council agreed to cover all future turf and shock pad replacement costs for the turfs in that city because it was recognised as being more cost effective than what was previously paid to have the sport take place on grass.

The financial savings on grass hockey field maintenance to the Christchurch City Council since the installation of the first turf at Porritt Park in 1985 would be estimated at \$8.8 million (47 years of cumulative turf availability @ 15 grass fields per turf @ \$12,500 per field) in 2008 values. This figure illustrates the benefits to Council in having sports use artificial turfs.

Furthermore, given the use of artificial turfs frees up grass fields for use by other sports, at a time that grass fields are at a premium in Christchurch, supporting the development of additional artificial turfs for hockey would be advantageous to other sports.

If any further information is desired by Councillors, please let me know.

Kind regards,  
Tim Shannahan  
Chief Executive Officer  
Canterbury Hockey Association Inc.

P 03 389 9123 | M 027 246 9661 | F 03 389 9825  
Porritt Park - 875 Avonside Drive, Avonside  
PO Box 24 006, Eastgate, Christchurch 8642



**Canterbury Women's Hockey Centennial Weekend**  
**Saturday 30 August 2008—Porritt Park**  
Registration forms available from [www.canterburyhockey.org.nz](http://www.canterburyhockey.org.nz)  
Enquiries to [hockey@hockeycanterbury.co.nz](mailto:hockey@hockeycanterbury.co.nz) or ph: 03 389 9126

This email may contain information which is privileged or confidential. If this email is not intended for you please immediately delete your copy of this email completely from your system and reply to the sender advising of the error. Thank you and apologies for wasting your time and bandwidth.