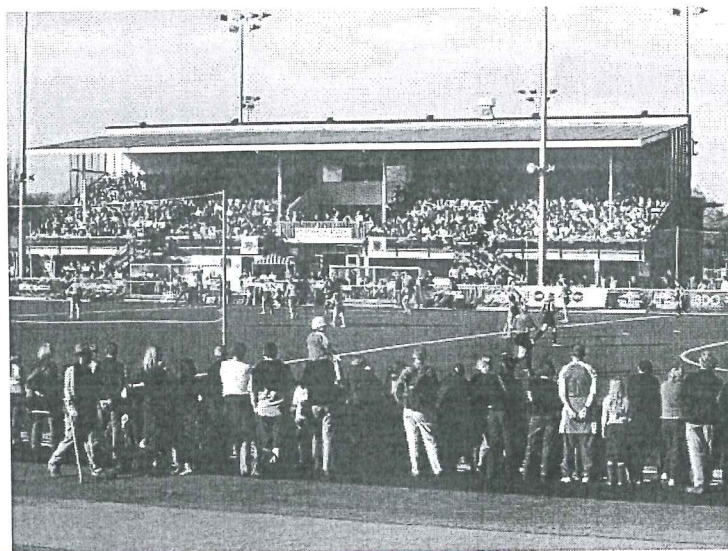


## Canterbury Artificial Surfaces Trust

Submission to the  
Christchurch City Council  
on the  
Draft Long-Term Council Community Plan (March 2009)



Prepared: April 2009

Contents

Executive Summary	1
Introduction	1
Continuation of Annual Grant	1
Development of Additional Artificial Fields	1
Financial Information	2
Links with Council Outcomes	3
Summary	4
Appendix A: Letter of Request from the Canterbury Hockey Association	5



### Executive Summary

The Canterbury Artificial Surfaces Trust requests that the Christchurch City Council provides a continuation in funding to the Trust over the next ten years to assist in the provision of existing artificial hockey fields in Christchurch, as well as support a desire to develop additional fields.

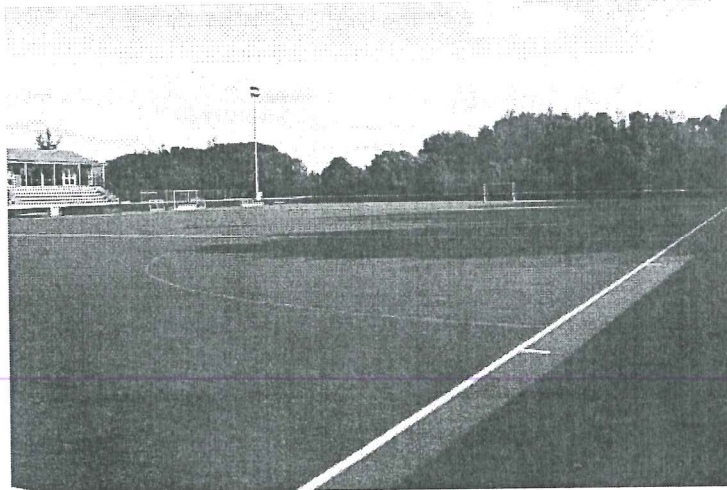
On this basis the Trust requests consideration be given to extending the current annual grant received since 2001, which is due to conclude in 2011, for another ten years through to 2021.

It is also requested that the Council provide funding of \$500,000 towards the development of each additional artificial field the Trust may undertake. It is possible that the Trust will be involved in the development of three additional fields in this period, therefore seeking up to \$1.5 million in the ten years to 2019.

### Introduction

The Canterbury Artificial Surfaces Trust was established in 2000 and is a charitable trust responsible for the provision of artificial sports surfaces in Christchurch, specifically hockey surfaces. The Trust currently owns three fields – two at Porritt Park and one at Nunweek Park, and its trustees are nominated by the primary users of those fields and the Christchurch City Council.

At present the Trust receives an annual grant from Council towards the interest expense incurred on the commercial bank loans held by the Trust. These loans have been required to pay for the development of the existing fields, as well as the scheduled replacement of the carpet surface on each field approximately every eight years. In the first year of the grant the Trust received \$80,000, with an adjustment for inflation applied each subsequent year. This grant commenced in 2001 and is due to conclude as of June 30 2011.



### Continuation of Annual Grant

With the annual grant from Council due to conclude in 2011, the Trust wishes to formally request that Council make provision for this grant to continue for another ten years. The Trust still has commercial bank loans on the existing fields and continued support to provide for the interest expense would certainly be appreciated.

It has been identified at various times by Council staff in the past eight years that there was a possibility the annual grants would be made available beyond 2011. Given this is the final LTCCP process prior to the conclusion of the existing grant period it is timely to ask Council to formally consider this possibility and include this within the Council budget beyond 2011.

#### Development of Additional Artificial Fields

The Trust has received a formal request from the Canterbury Hockey Association to develop an additional artificial hockey field in the coming year to address current field shortages for existing members and provide the means to grow the sport over the coming years. The Trust is willing to respond favourably to this request given that this project is consistent with the primary functions of the Trust. (It is understood that two fields are required immediately, but that the Trust only need be involved in one of these as St. Bede's College have indicated an intent to develop a field early in 2010.)

The Canterbury Hockey Association has also indicated that to adequately service the future needs of the sport it is projected that an additional field may well be required every four years. The Trust would be willing to undertake these future projects if no other project groups came forward to manage the process.

On this basis it would seem possible that the Trust will develop three additional fields in the coming ten years, with likely installation dates being 2010, 2014 and 2018.

As these fields are truly community resources, providing the means for the residents of Christchurch to engage not only in hockey, but any other sport that may be played on the fields (historically touch rugby has been a user of the fields in summer), the Trust would hope the Council would view it as appropriate to contribute funding towards the development of these fields.

#### Financial Information

The cost of an artificial hockey field will range between \$1.25-1.8 million. The range reflects variances in certain components, such as the quality of the carpet surface installed, the inclusion of a watering system, the inclusion of floodlighting, the need to build supporting facilities, such as changing rooms, and the extent of any earth works required to prepare the foundation.

Based on the nature of the request from the Canterbury Hockey Association, the immediate need for additional fields relates to increasing participation numbers and this would suggest that the sport does not require a high quality water-based field. Instead a field similar in nature to the existing field at Nunweek Park would be a suitable option and this would likely be at a cost towards the lower end of the range identified above.

It is likely that the subsequent fields identified for 2014 and 2018 would be of a similar nature, although one of those fields may need to be a water-based field to address growth at the elite end of the sport and the need to provide a higher quality field.

The Trust may therefore undertake in the next ten years the development of three fields, with a likely average cost of \$1.5 million (adjusted for inflation). On this basis the preferred funding model for each of these fields would be:

Christchurch City Council	\$500,000
The Canterbury Community Trust	\$250,000
Gaming Machine Trusts	\$250,000
Canterbury Hockey Association	\$300,000
Commercial Bank Loan	\$200,000

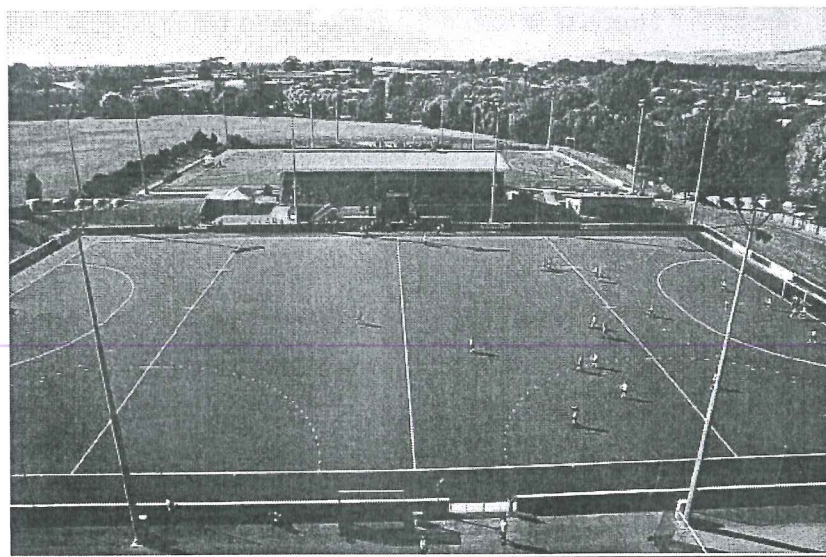
It is worth identifying that the Canterbury Hockey Association has already committed \$135,000 from the surplus achieved for 2007-08 towards the field desired for 2010 and is seeking to match that in its current financial year to achieve the amount of \$300,000 identified from that source.

The Canterbury Hockey Association are also attempting to cover the \$200,000 identified as likely to be sourced by a commercial bank loan through fundraising and sponsorship activities, but if those are not successful, the Trust would certainly consider a loan for the balance in the knowledge that this level of debt is significantly less than what was incurred on previous field developments.

It is expected that the Canterbury Hockey Association can replicate their efforts for subsequent fields in 2014 and 2018.

It is important to indicate that all other funding sources are yet to be confirmed, but the Trust is confident that the identified amounts can be obtained.

With regard to the requested funding of \$500,000 from Council for each field, the Trust would be willing to consider any options for receiving this funding if a lump sum in the year of development of each field is not possible. This could, for example, include installments over more than one year.



#### Links With Council Outcomes

Both aspects of this submission, the continuation of the annual grant to assist with on-going interest expense on loans related to the existing three fields and the development of up to three additional fields in the next ten years by the Trust, address Council outcomes as follows:

- Council policy identifies a commitment to encouraging participation in sport and recreation as it has a positive benefit on the community. The operations of the Trust allow for participation by the community in sport.
- Council policy states that it is a priority to ensure communities have access to community facilities that meet their needs and for hockey this would only be achieved through the continuation of the Trust and its ability to make playing facilities available
- Council policy states that it is a priority to increase participation in sport programs and the Canterbury Hockey Association has demonstrated through reaching capacity on its existing fields that it has increased participation in recent years and is probably capable of further increase if additional artificial hockey fields were available. The Trust is willing to undertake the development of additional fields to allow for increased participation.

#### Summary

The Canterbury Artificial Surfaces Trust wishes to continue to meet the requirement of the sport of hockey, and other sports that have used the existing fields in Christchurch, for artificial playing surfaces in Christchurch. This involves the on-going provision of the existing fields and meeting all obligations associated with maintaining these fields. It also involves addressing the need for additional fields when demand dictates, as is the current situation.

The Trust would like Council to continue to be an active partner in the Trust and its activities. This can be achieved by Council through the continued provision of the annual grant to cover interest expenses. It can also be achieved through the provision of funding towards the development of any future fields the Trust may undertake.

The Trust is grateful to the Council for its on-going assistance, both in terms of funding and representation on the Trust, and looks forward to the opportunity to discuss the content of this submission in further detail in May.

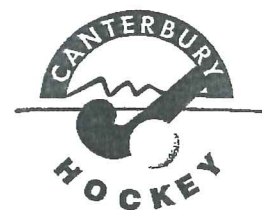
For further information on the content of this submission or to discuss this submission, please contact:

Selwyn Maister  
Chairman  
Canterbury Artificial Surfaces Trust  
Phone: (03) 359 5392  
Mobile: 021 104 2993  
Email: [maister@xtra.co.nz](mailto:maister@xtra.co.nz)

or

Peter Cox  
Treasurer  
Canterbury Artificial Surfaces Trust  
Phone: (03) 379 2430  
Mobile: 027 434 3325  
Email: [pacox@xtra.co.nz](mailto:pacox@xtra.co.nz)

Appendix A  
Letter of Request from the Canterbury Hockey Association



14 April 2009

Selwyn Maister  
Chairman  
Canterbury Artificial Surfaces Trust  
Po Box 24006  
Eastgate  
Christchurch 8642

Dear Selwyn & other Trustees,

Re: Development of additional artificial hockey fields in Christchurch

The Canterbury Hockey Association requests that the Canterbury Artificial Surfaces Trust undertake the development of additional artificial playing fields to address the needs of the sport of hockey, both now and in the future.

The shortage of fields presently has been detrimental to the sport of hockey in Canterbury for the past few years, preventing growth in participant numbers and requiring existing participants to engage at unsuitable times to be able to access fields. To address this issue there is a need for two additional fields in the coming year and it is asked that the Trust undertake the development of at least one of these fields.

Projected growth will also require the development of an additional field every four to five years into the future and it is requested that the Trust undertake each of these developments unless an alternate group (e.g. a school) comes forward for any particular development.

As the primary beneficiary of any additional fields that will be developed, the Canterbury Hockey Association is financially committed to being a partner in each project undertaken by the Trust. To illustrate this it can be indicated a reserve of \$135,000 has been created from the surplus achieved in our 2007-08 financial year that will be directed into an immediate project and the budget for 2008-09 identifies an intention to at least match this amount, meaning that the Canterbury Hockey Association expects to be able to provide \$300,000 funding towards this first project.

I thank the Trust for their on-going provision of artificial hockey fields and look forward to the development of additional fields in the future.

Yours sincerely,

Tim Shannahan  
Chief Executive Officer  
Canterbury Hockey Association

Email: [ceo@hockeycanterbury.co.nz](mailto:ceo@hockeycanterbury.co.nz)  
Mobile: 027 246 9661