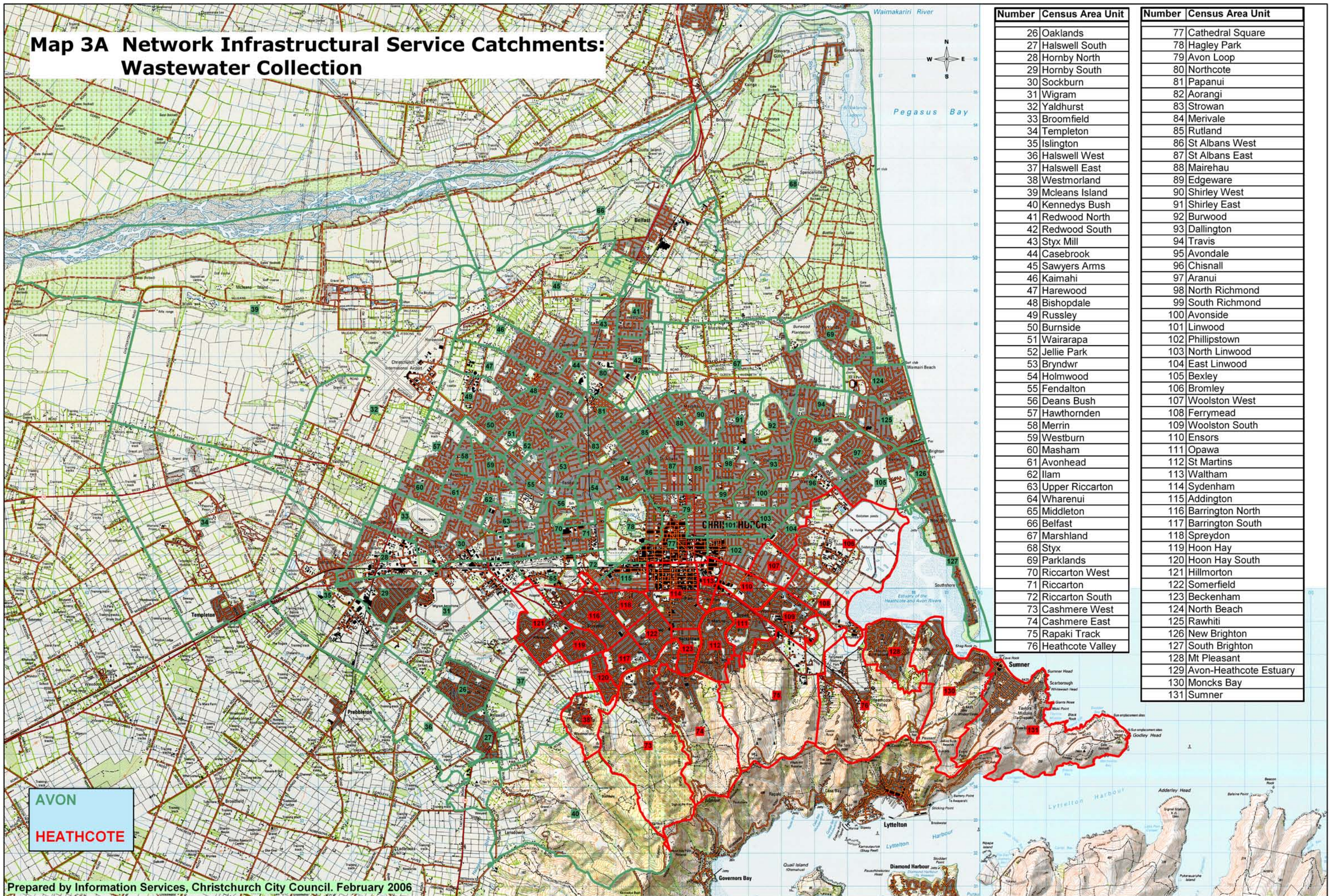


Map 3A Network Infrastructural Service Catchments: Wastewater Collection



| Number | Census Area Unit |
|--------|------------------|
| 26 | Oaklands |
| 27 | Halswell South |
| 28 | Hornby North |
| 29 | Hornby South |
| 30 | Sockburn |
| 31 | Wigram |
| 32 | Yaldhurst |
| 33 | Broomfield |
| 34 | Templeton |
| 35 | Islington |
| 36 | Halswell West |
| 37 | Halswell East |
| 38 | Westmorland |
| 39 | Mcleans Island |
| 40 | Kennedys Bush |
| 41 | Redwood North |
| 42 | Redwood South |
| 43 | Styx Mill |
| 44 | Casebrook |
| 45 | Sawyers Arms |
| 46 | Kaimahi |
| 47 | Harewood |
| 48 | Bishopdale |
| 49 | Russley |
| 50 | Burnside |
| 51 | Wairarapa |
| 52 | Jellie Park |
| 53 | Bryndwr |
| 54 | Holmwood |
| 55 | Fendalton |
| 56 | Deans Bush |
| 57 | Hawthornden |
| 58 | Merrin |
| 59 | Westburn |
| 60 | Masham |
| 61 | Avonhead |
| 62 | Ilam |
| 63 | Upper Riccarton |
| 64 | Wharenui |
| 65 | Middleton |
| 66 | Belfast |
| 67 | Marshland |
| 68 | Styx |
| 69 | Parklands |
| 70 | Riccarton West |
| 71 | Riccarton |
| 72 | Riccarton South |
| 73 | Cashmere West |
| 74 | Cashmere East |
| 75 | Rapaki Track |
| 76 | Heathcote Valley |

| Number | Census Area Unit |
|--------|------------------------|
| 77 | Cathedral Square |
| 78 | Hagley Park |
| 79 | Avon Loop |
| 80 | Northcote |
| 81 | Papanui |
| 82 | Aorangi |
| 83 | Strowan |
| 84 | Merivale |
| 85 | Rutland |
| 86 | St Albans West |
| 87 | St Albans East |
| 88 | Mairehau |
| 89 | Edgware |
| 90 | Shirley West |
| 91 | Shirley East |
| 92 | Burwood |
| 93 | Dallington |
| 94 | Travis |
| 95 | Avondale |
| 96 | Chisnall |
| 97 | Aranui |
| 98 | North Richmond |
| 99 | South Richmond |
| 100 | Avonside |
| 101 | Linwood |
| 102 | Phillipstown |
| 103 | North Linwood |
| 104 | East Linwood |
| 105 | Bexley |
| 106 | Bromley |
| 107 | Woolston West |
| 108 | Ferrymead |
| 109 | Woolston South |
| 110 | Ensors |
| 111 | Opawa |
| 112 | St Martins |
| 113 | Waltham |
| 114 | Sydenham |
| 115 | Addington |
| 116 | Barrington North |
| 117 | Barrington South |
| 118 | Spreydon |
| 119 | Hoon Hay |
| 120 | Hoon Hay South |
| 121 | Hillmorton |
| 122 | Somerfield |
| 123 | Beckenham |
| 124 | North Beach |
| 125 | Rawhiti |
| 126 | New Brighton |
| 127 | South Brighton |
| 128 | Mt Pleasant |
| 129 | Avon-Heathcote Estuary |
| 130 | Moncks Bay |
| 131 | Sumner |

AVON
HEATHCOTE