



25. CENTRAL CITY RECOVERY PLAN QUARTERLY REPORT JULY 2012

General Manager responsible:	General Manager Strategy & Planning, DDI 941-8281
Officer responsible:	Programme Manager Liveable City
Author:	Carolyn Ingles, Unit Manager Central City Plan

PURPOSE OF REPORT

1. The purpose of this report is to update the Council on the implementation of the Central City Recovery Plan for the period March 2012- May 2012.

EXECUTIVE SUMMARY

2. This is the second quarterly report for the Central City Recovery Plan.

ACTIVITIES FOR THE QUARTER

3. The key activities for this quarter are set out below:

- (a) **Resource Consents** (March-May 2012)

Table 1 sets out the resource consent applications received since March 2012. The table is set out by consent type. Note some consents are for minor works to existing buildings, e.g., egress stairs.

Table 1: Resource Consent Activity

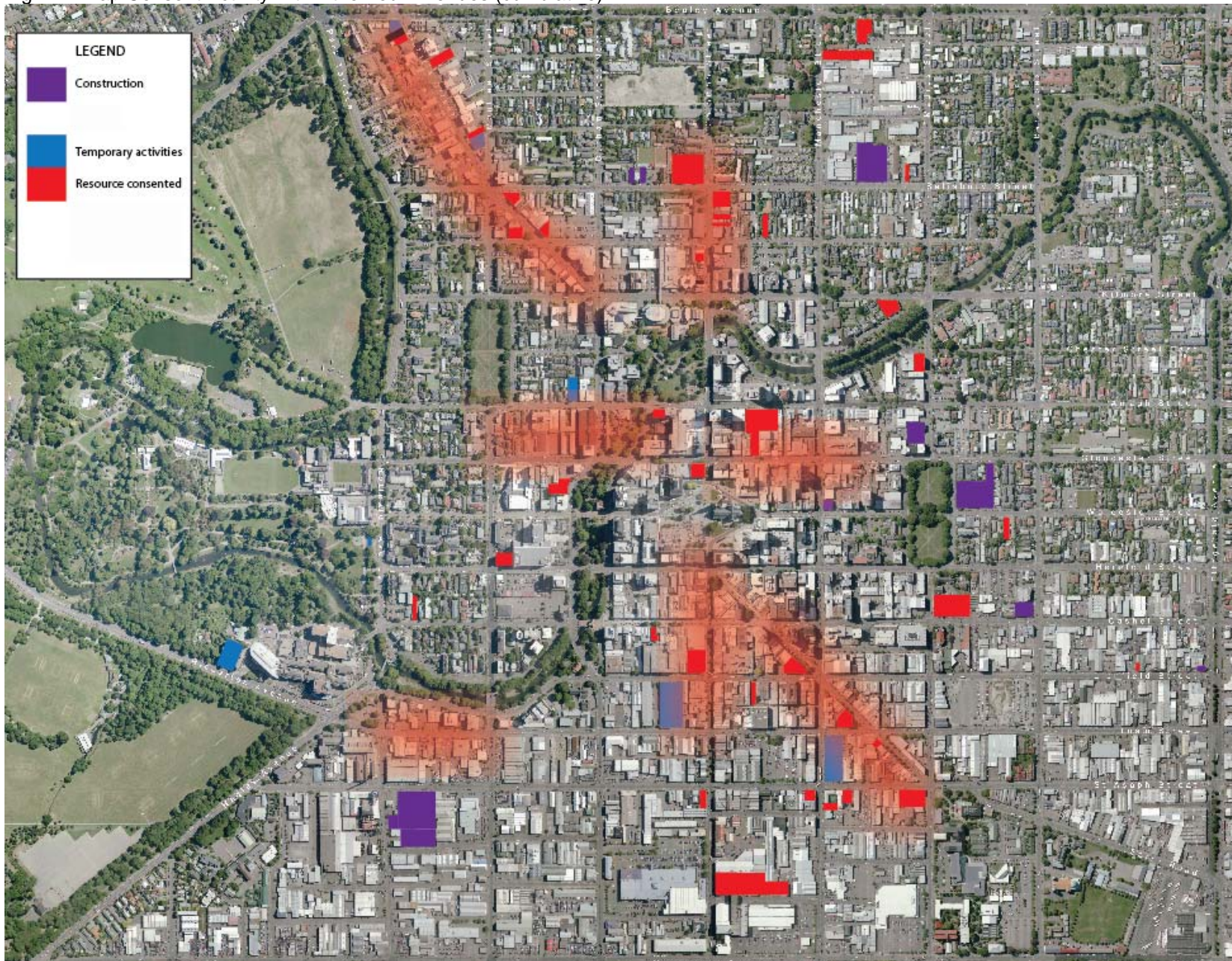
Consent Type	Number
Land Use Consent	0
Subdivision Consent	1
Temporary Activity	19
Existing Use Certificate	1
Certificate of Compliance	1

Figure 2 shows the areas of activity within the four avenues where pre-application discussions have occurred and consent applications have been granted. The red blocks on the map indicate sites where resource consent has been granted and/or buildings are under construction.

Figure 3 is a selection of building designs which have resource consent approval.

25 Cont'd

Fig 2 – Map Consent Activity within the Four Avenues (cumulative)



25 Cont'd

Figure 3 – Building designs which have resource consent approval

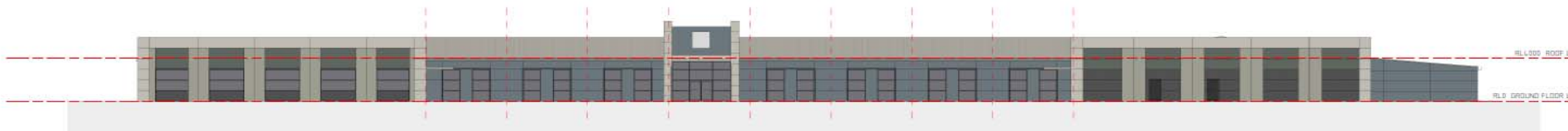


735 Colombo Street, ex Rural Bank House



80 Lichfield Street, connection to Struthers Lane

25 Cont'd

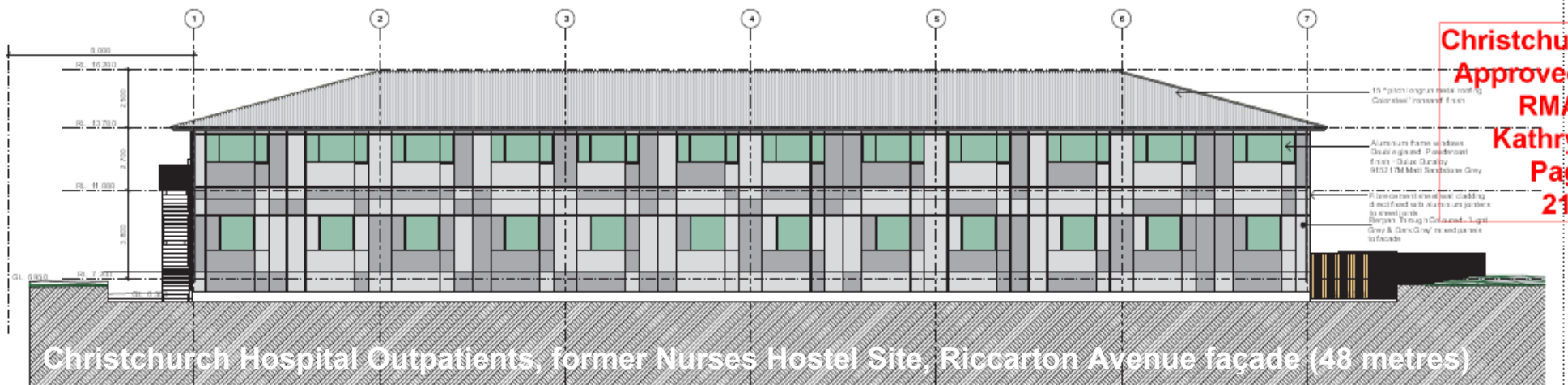


1 100 - NORTH ELEVATION
1 : 200



2 100 - SOUTH ELEVATION
1 : 200

Temporary Police Station, 62-74 St Asaph Street (approximately 120 metres)



25 Cont'd

TRANSITIONAL CITY PROJECTS

4. A short-term Central City Recovery work programme has been prepared. The aim of this work programme is to ensure that the Central City is a good environment for residents to return to; that people and business investment are attracted to the Central City; and that priority CCP projects are progressed so that recovery is driven forward. The work for this financial year is summarised below:

Table 2: Transitional City Projects

Project	Objective	Proposed location (s)
Temporary Streetscape Design and amenity	Streetscapes and amenity improvements - focused on supporting existing and new nodes of recovery. Streetscape elements to be relocatable and reuseable as much as possible.	<ul style="list-style-type: none"> • Oxford Tce (Hereford St to Lichfield St) • Colombo St (Tuam St to South City) • Alice's C1 • Victoria St (design only) • Gloucester St (design only) • Lighting upgrade project on Latimer Square as part of Transitional City projects.
Wayfinding and signage	Install new signage which supports the visitor experience of the central city.	<ul style="list-style-type: none"> • New signage at various locations throughout the central city.
Papawai Otakaro temporary enhancements	Interpretation hoardings to demonstrate the vision for the future Papawai Otakaro.	<ul style="list-style-type: none"> • Oxford Tce near Cashel St • Worcester Bridge
Reactivating Worcester Boulevard	Programme of art installations to link the Museum and Botanic Gardens via the River to Cashel Mall. Working with Art Gallery staff on the installations.	<ul style="list-style-type: none"> • Worcester Boulevard (Cambridge Tce to Montreal St) • Art Gallery east wall

CORDON REDUCTION COORDINATION

5. Cordon reduction coordination has continued throughout the quarter. Issues which need to be addressed prior to the central city cordon reducing along any particular street Council staff need to assess road and pavement condition, street lighting and also underground infrastructure state. For some cordon reductions a CPTED assessment is undertaken to identify what specific actions need to be taken to make the streets or public space safe. The latest cordon reduction map is shown in **Attachment 1**.

CATHEDRAL SQUARE

6. Preliminary designs for the Temporary Cathedral Square project have been received from the design consultants. A review process has been carried out with key stakeholders, including relevant Council and CERA staff, landowners, Church Property Trustees. A briefing has been provided to the CCDU Blueprint team on issues associated with Cathedral Square and lessons learnt from the initial stages of the temporary design work.

A successful youth engagement event, using a Graffiti Wall, was held during Otautahi Youth Council's 'We Speak' 2012 Conference as part of Youth Week. This provided youth an opportunity to share their ideas on how they could participate and what they wanted to see and do in the Square.

25 Cont'd

A Crime Prevention Through Environmental Design (CPTED) workshop has been held to review the public safety aspects of the preliminary designs for the Square. This has been fed back to the design team for future design refinements.

INFRASTRUCTURE RECOVERY

7. Discussions have commenced with SCIRT staff regarding rebuilding central city infrastructure. An initial assessment of the state of the infrastructure has been completed. A central city infrastructure statement has also been prepared to assist in planning central city infrastructure repair and recovery.

CENTRAL CITY PLAN RECOVERY PROJECTS

8. The following activities have occurred during the last three months. These activities are reported by chapter from the draft Central City Recovery Plan and set out in Table 3:

Table 3: Central City Recovery Plan project activity

Plan Chapter	Project	Activity
Remembering	<ul style="list-style-type: none"> • Earthquake Memorial 	Liaison has continued with CERA and the Ministry of Culture and Heritage on the earthquake memorial.
Green City		No activities to report this quarter
Distinctive City	<ul style="list-style-type: none"> • Retention and reuse of materials • Blocks Lanes & Courtyards project 	<p>Guidelines on reuse of materials and on conceptual history for site redevelopment developed.</p> <p>Preparing an information pack to explain benefits of lanes and key developer considerations when designing lanes and courtyards.</p> <p>Continue to investigate opportunities for strategic purchase/easement creation.</p>
City Life	<ul style="list-style-type: none"> • Arts in the City 	Ongoing liaison with Arts stakeholder groups and feasibility of arts projects.
Transport Choice	<ul style="list-style-type: none"> • All Transport choice projects 	Liaison with UDS partners and Government agencies on further investigations on the Public Transport projects.
Market City	<ul style="list-style-type: none"> • Shared business campus 	EPIC is now under development, staff are continuing to work with EPIC to provide landscaping advice.

ENABLING CENTRAL CITY RECOVERY

9. The small team of Recovery Coordinators, along with urban design, transport, landscape and planning staff are meeting with individual landowners, commercial groups and precinct groups to progress a range of plans and initiatives. Once the Blueprint has been developed by the CCDU it is expected that the private sector will begin to progress many more projects.

25 Cont'd

CHRISTCHURCH CENTRAL DEVELOPMENT UNIT

10. On 18 April the Minister for Canterbury Earthquake Recovery announced the establishment of the Christchurch Central Development Unit to "lead the rebuild of Christchurch central and to deliver the vision in the Central City Plan prepared by the Christchurch City Council for a distinctive, vibrant and green 21st century city" (from CCDU website). In the first 100 days the unit is tasked with developing a blueprint for the central city that provides a clear direction to implementing the Central City Plan. The blueprint will also provide certainty for the development of anchor projects and precincts in Christchurch central. The blueprint will be developed collaboratively with Christchurch City Council and in consultation with key landowners, banks, insurers, investors and the Christchurch community (from CCDU website).
11. Following the Ministers announcement of the Unit and it's establishment, Council offered eight staff as possible secondments; to date three staff have been seconded into the Unit. Staff have also been involved in a number of briefings with Unit staff and the Blueprint consultants to provide information and knowledge into the Blueprint development process.
12. The announcement of the Unit establishment and the blueprint process has impacted on the work of the team. Some of the private sector redevelopment has slowed or is on hold. Several projects to implement the Central City Plan could be effected by the result of the blueprint process and Ministerial decisions.

2012/13 WORK PROGRAMME

13. The 2012/13 Annual Plan includes funding for further transitional city projects as well as funding for the initial planning of a number of central city plan projects. The annual plan also includes funding for a number of central city facilities. Council funding decisions could be influenced by the decisions the Minister may make as a result of the CCDU work and responsibility for leading and/or delivering these.

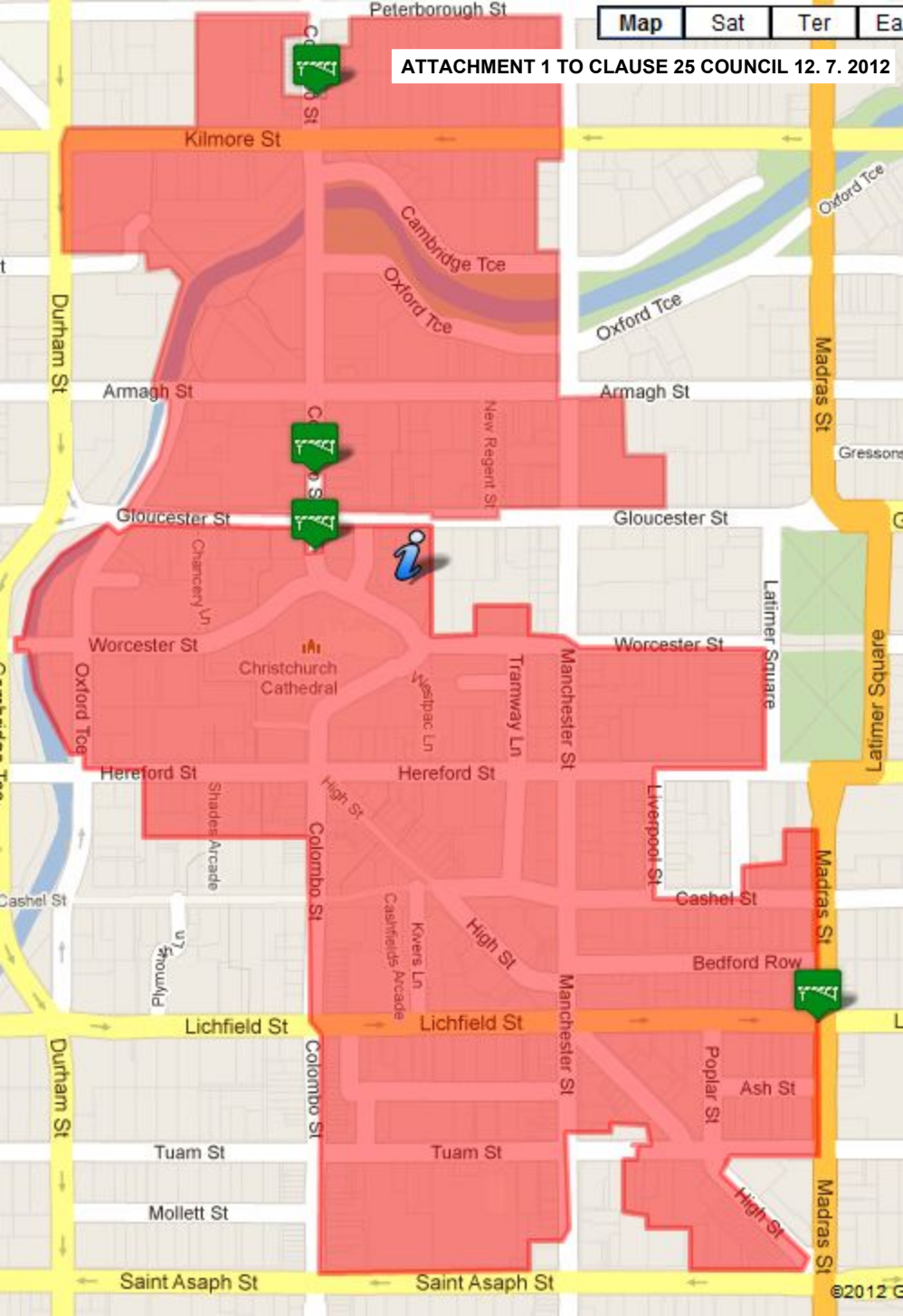
COMMUNICATIONS

14. In April The Draft Central City Recovery Plan won the 2012 New Zealand Planning Institute for Strategic Planning and Guidance (see award commendation in **Attachment 2**). In May 'Share an Idea' was highly commended at the 2012 PRINZ Awards.

STAFF RECOMMENDATION

It is recommended that the Council receive this report for information.

ATTACHMENT 1 TO CLAUSE 25 COUNCIL 12. 7. 2012





New Zealand
Planning Institute[®]
Te Kokiringa Taumata

NZPI[®] BEST PRACTICE AWARD

This Award is presented to

Christchurch City Council

for the

Draft Central City Recovery Plan

on the day of

3rd May 2012

CHAIR

VICE CHAIR

