

28. 7. 2011

**SHIRLEY/PAPANUI COMMUNITY BOARD
1 JUNE 2011**

**Minutes of a meeting of the Shirley/Papanui Community Board,
held on Wednesday 1 June 2011 at 4.10pm
in Garden Room, St Albans Baptist Church, 64 McFaddens Road St Albans.**

PRESENT: Chris Mene, (Chairperson), Anna Button, Ngaire Button,
Kathy Condon, Pauline Cotter, Chris English and Aaron Keown.

APOLOGIES: Nil.

The Board reports that:

PART A – MATTERS REQUIRING A COUNCIL DECISION

**1. SIGNALISED INTERSECTION – LANGDONS ROAD/MAIN NORTH ROAD/MARY STREET –
SAFETY AUDIT REPORT**

The Board considered a report seeking its recommendation to the Council to approve changes to the Langdons Road/Main North Road/Mary Street traffic signals, specifically around the installation of a right turn arrow turning from Main North Road onto Langdons Road.

STAFF RECOMMENDATION

That the Shirley/Papanui Board recommend to Council that it approve the following changes at the Langdons Road/ Main North Road/ Mary Street intersection –

- (a) Implementation of Option 3 and the recommendations of Aurecon report 213384-001-01,
- (b) That Mary Street remains as a single lane north-westbound,
- (c) That the new road marking layout is installed according to the **attached** proposed marking plan (TS102901.DGN 2010-11-22).

BOARD RECOMMENDATION

That the staff recommendation be adopted.

PART B - REPORTS FOR INFORMATION

2. DEPUTATIONS BY APPOINTMENT

2.1 WARREN HUDSON – PAPANUI HERITAGE GROUP

Warren Hudson, Murray Williams and Denis McMurtrie, from the Papanui Heritage Group, updated the Board on the activities the group which included a project to record the history of Papanui.

The group also expressed an interest in creating a small museum/learning centre on the Bridgestone site in Langdons Road and ask the Board for its assistance in identifying the exact location of the land that was gifted to the Council in 2010. Staff undertook to supply that information.

28. 7. 2011

Shirley/Papanui Community Board 1.6.2011

2 Cont'd

The Chairperson thanked Messrs Hudson, McMertrie and Williams for their deputation and invited the Papanui Heritage Group to attend a workshop with the Board later in the year.

2.2 LYNDA GOODRICK AND SIMON HILL – BELFAST COMMUNITY NETWORK

Lynda Goodrick and Simon Hill updated the Board on the work and activities of the Belfast Community Network.

The Chairperson thanked Ms Goodrick and Mr Hill for their presentation and members congratulated the group on the work they are doing in the community.

3.3 RHYS TAYLOR – GREENING THE RUBBLE

Rhys Taylor of Greening the Rubble, was in attendance and spoke to the Board of the work he is involved in.

The Chair thanked Mr Taylor for his deputation and asked that the Board be kept informed of any projects being undertaken by Greening the Rubble in the Shirley/Papanui community.

3.4 TONY MARSH – VISION CHURCH CHRISTCHURCH NORTH APOSTOLIC

Tony Marsh updated the Board on the work of the Vision Church Christchurch North Apostolic and requested the appointment of a Board representative on their Committee.

The Chairperson thanked Mr Marsh for his deputation and noted the intent of the Church to establish a residents' association. The Board **decided** to consider the appointment of a Board representative once the proposed resident's association has been established and incorporated.

3.5 ANNE KENNEDY AND GRAEME MITCHELL OF SHIRLEY COMMUNITY TRUST

Anne Kennedy and Graeme Mitchell, Shirley Community Trust, advised the Board of the Trust's desire to secure an alternative premise in the Shirley area to establish a new community centre and asked for the Board's support for their application.

The Board **decided**

- (a) To write a letter in support of the Shirley Community Trust's application for funding from the Canterbury Community Trust to purchase alternative premises.
- (b) That a Board representative would accompany the Shirley Community Trust members when they present their purchase proposal to the property owner.
- (c) To request staff to provide Shirley Community Trust with information on the funding and loans available within the Council which could assist with the purchasing of alternative premises.

3. PRESENTATION OF PETITIONS

Nil.

4. NOTICES OF MOTION

Nil.

28. 7. 2011

Shirley/Papanui Community Board 1.6.2011

5. BRIEFINGS

5.1 CENTRAL CITY PLAN

Mary Hay from Programme Engagement, briefed the Board on the community engagement plan for the Central City Plan including details of how elected members can contribute to the process.

Following questions from the members, the Chairperson thanked Ms Hay for her briefing.

6. CORRESPONDENCE

Correspondence was **received** from the following:

- (a) Ken Kinzett with concerns about 5 Vagues Road and Kruses Drain.

The Board considered the letter from Mr Kinzett, which was carried over from the 17 May 2011 Board meeting, and **decided** to request that staff attend a June 2011 meeting of the Board to explain available options and to verify the wording of the Board and the Council resolutions made in September 2010 with regard to Kruses Drain and the purchase of 5 Vagues Road.

- (b) Alison Allsop, Forfar Street resident, in relation to the earthquake damaged sites around St Albans and Papanui.

The Board considered the letter from Ms Allsop and **decided** to request that staff respond on behalf of the Board.

- (c) Ann Woods, Managing Director Skyway Body Corporate Services Ltd, regarding parking issues at 158-150 Cavendish Road.

The Board considered the correspondence of 30 May 2011 from Ms Woods and **decided** to refer the matter to staff for comment by way of memorandum on the reported parking issues at 150-158 Cavendish Road and on the resource consent car parking requirements for those properties.

- (d) Buzz Jones, Papanui TOCH Athletics Club regarding issues relating to the club's increased activity due to the facilities at Queen Elizabeth II being unavailable.

7. COMMUNITY BOARD ADVISER'S UPDATE

The Board **received** updates from the Community Board Adviser on Board related activities. Specific mention was made of the following matters:

7.1 WAIMAKARIRI RIVER STOPBANKS

The Board **received** requested information from Environment Canterbury regarding the damage and repairs on the southern bank of the Waimakariri River Stopbanks.

7.2 BELFAST COMMUNITY NETWORK – BELFAST FARMERS MARKET

The Board **received** requested information that the Belfast Community Network does require a resource consent to hold a regular Farmers Market and that the Network had employed a Planner to assist with their application.

28. 7. 2011

Shirley/Papanui Community Board 1.6.2011

7 Cont'd

7.2 IMPACT OF AGED CARE RESIDENTIAL DEVELOPMENTS ON ROADING NETWORK

The Board **received** a memorandum from staff in response to the Board's request for information on the impact of aged care residential developments on roading networks and the Council's ability to seek a contribution towards traffic works, such as pedestrian crossings, as a condition of granting resource consent.

8. ELECTED MEMBERS' INFORMATION EXCHANGE

- **New Zealand Local Boards and Community Boards Conference 2011** - New Zealand Community Board Conference attendees Anna Button, Kathy Condon and Pauline Cotter, updated the Board on their experiences at the May 2011 conference held in Rotorua.
- **Brooklands/Dredging of Styx River** - Concern was expressed regarding the risk of the Styx River flooding in Brooklands.

The Board **decided** that staff be requested to supply a memorandum on the risk of flooding of the Styx River at Spencerville and Brooklands and whether or not dredging would be taking place.

- **Brooklands and Spencerville Tsunami Alarms** - Local residents had approached members about the possibility of installing tsunami alarms in Brooklands and Spencerville and sought information about the risks of a tsunami in those localities.

The Board **decided** to request that staff brief the Board on 29 June 2011 on the risks of a Tsunami for the Brooklands and Spencerville areas, an appropriate evacuation plan and the possibility of tsunami alarms being installed at those locations.

- **Board Meeting of 29 June 2011**

The Board **decided** to hold the 29 June 2011 Community Board meeting at the Brooklands hall commencing at 4pm.

- **Garden Pride Awards** - The Board **decided** that if the certificates for the Garden Pride Awards have been printed, then they should be posted out. Otherwise, that a presentation ceremony be planned for 2012.
- **Graeme Condon Sports Facility Artwork** - Members were advised that the artwork for the Graeme Condon Sports Facility was planned to be ready for the first anniversary of the facility opening.

A presentation will be brought to the Board once the brief for the artwork has been sent out.

- **Community Board Objectives/Towards Recovery**

The Board **decided** to hold a Board workshop at 8am on 15 June 2011 to consider the Community Board Objectives including feedback from the Towards Recovery meetings, with the Board meeting on that day commencing at 9am.

Staff tabled a chart in preparation for the workshop, which summarised and commented on community feedback/requests from the Towards Recovery workshop held on 19 May 2011.

9. MEMBERS' QUESTION

Nil.

28. 7. 2011

Shirley/Papanui Community Board 1.6.2011

PART C - REPORT ON DELEGATED DECISIONS TAKEN BY THE BOARD

10. CONFIRMATION OF MEETING MINUTES – 18 MAY 2011

The Board **resolved** that the minutes of its ordinary meeting of 18 May 2011, be confirmed subject to the following amendment:

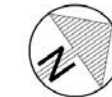
Page 2, paragraph 2 of clause 1.3 – sentence to read:

The group recently undertook several Edgeware Road street clean-ups, and are working with Gapfiller in planning several community events in the near future. The group is also working with the Greening the Rubble group to temporarily 'green' the site of the demolished supermarket site in Edgeware Road to enhance the area until a new supermarket is built.

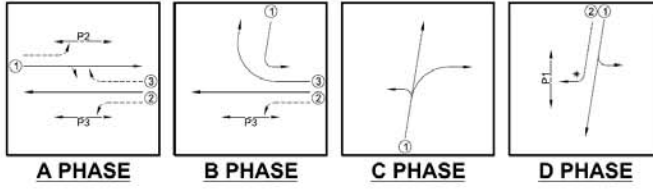
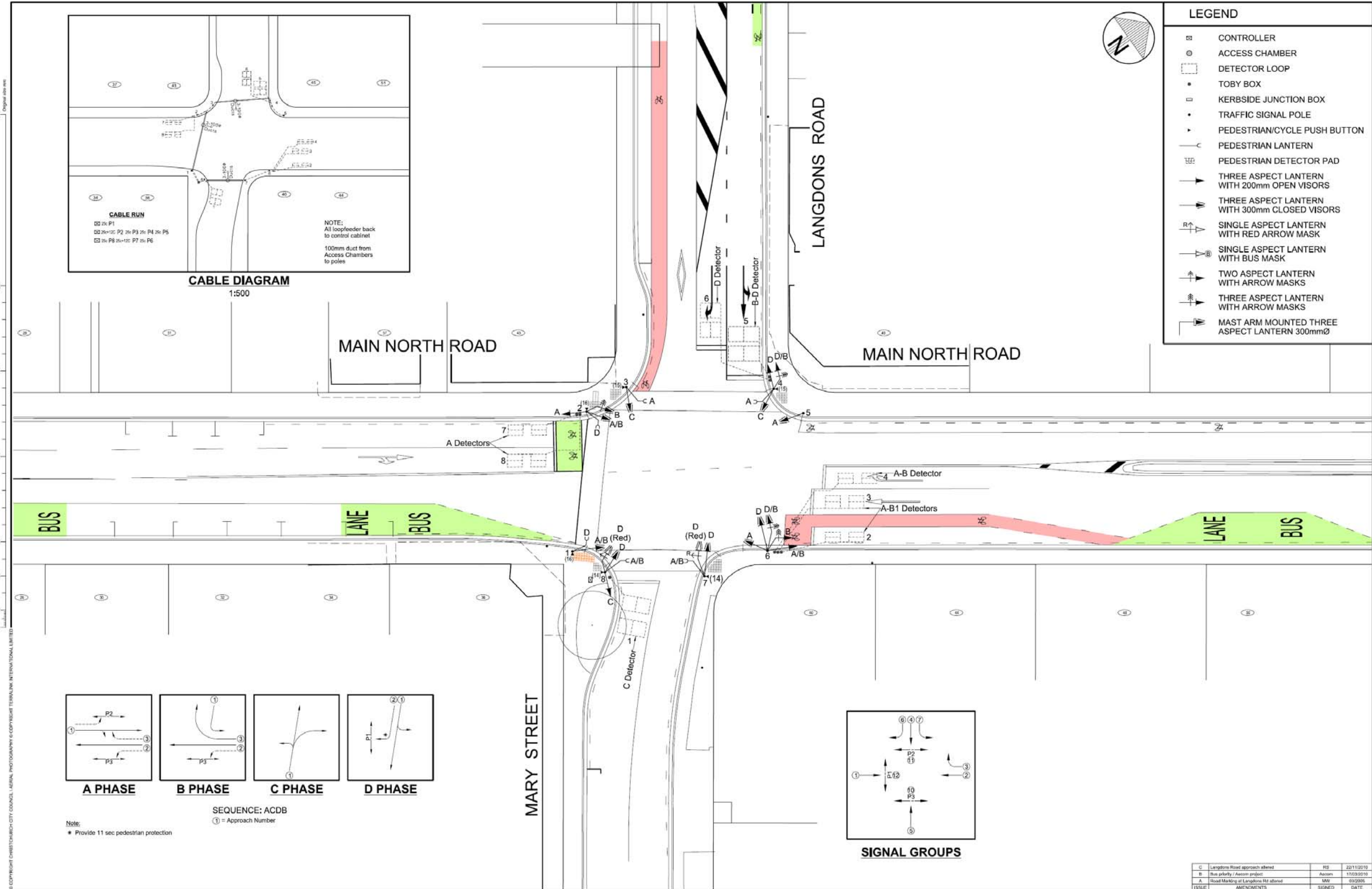
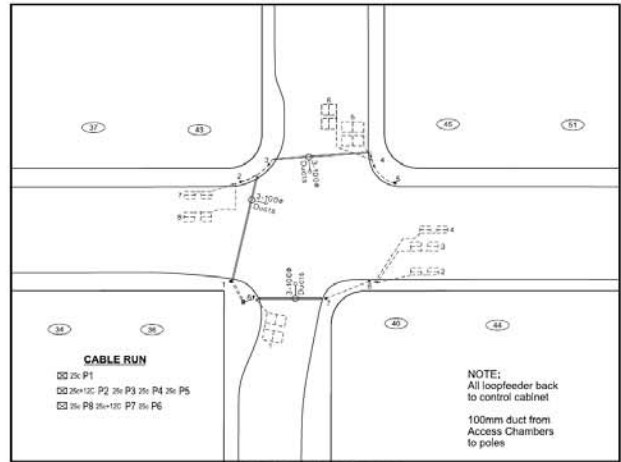
The meeting concluded at 8.30pm

CONSIDERED THIS 15TH DAY OF JUNE 2011

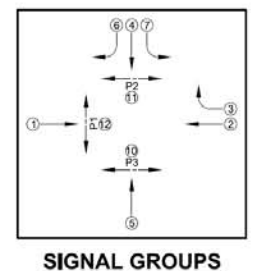
**CHRIS MENE
CHAIRMAN**



LEGEND	
	CONTROLLER
	ACCESS CHAMBER
	DETECTOR LOOP
	TOBY BOX
	KERBSIDE JUNCTION BOX
	TRAFFIC SIGNAL POLE
	PEDESTRIAN/CYCLE PUSH BUTTON
	PEDESTRIAN LANTERN
	PEDESTRIAN DETECTOR PAD
	THREE ASPECT LANTERN WITH 200mm OPEN VISORS
	THREE ASPECT LANTERN WITH 300mm CLOSED VISORS
	SINGLE ASPECT LANTERN WITH RED ARROW MASK
	SINGLE ASPECT LANTERN WITH BUS MASK
	TWO ASPECT LANTERN WITH ARROW MASKS
	THREE ASPECT LANTERN WITH ARROW MASKS
	MAST ARM MOUNTED THREE ASPECT LANTERN 300mmØ



Note:
 • Provide 11 sec pedestrian protection



ISSUE	AMENDMENTS	SIGNED	DATE
C	Langdons Road approach altered	RZ	20/11/2018
B	Bus priority / Access project	Accom	17/09/2018
A	Road Marking at Langdons Rd altered	MM	09/09/18



DATUM	C.O.D.	NAME	SIGNED	DATE	APPROVED	CONSULTANT
BENCH MK.		DESIGNED	R. Shrivasth	28/10/2018	FOR TENDER	
RL		DES. REVIEW			DATE	SIGNED
SURVEY		DRAWN	S.J. PRATT	18/10/2018	Tender Data	
SURVEY LAB		DRAW. CHECK			FOR CONSTRUCTION	
		FILE LOCATION			DATE	SIGNED
DRAW. REF.		FILE LOCATION	S:\cmt\cp\1817\ts102901\102901.dgn		CONSULTANT PROJECT REF.	CONSULTANT FILE REF.
SAP WBS		SAP WBS				

PROJECT TITLE
 LANGDONS ROAD / MAIN NORTH ROAD / MARY STREET INTERSECTION

DRAWING TITLE
 TRAFFIC SIGNALS AND ROAD MARKINGS

CONTRACT NUMBER	COLUMBIA SHEET NO.	SCALES
CP500000	A1	1:200
GAD DRAWING FILE REF. TS102901.DGN		
CP5 PROJECT FILE NUMBER		INTERSECTION NUMBER
		257

© COPYRIGHT CHRISTCHURCH CITY COUNCIL. ALL RIGHTS RESERVED. PHOTOGRAPHY © CHRISTCHURCH TERMINAL INTERNATIONAL LIMITED.