

14. 7. 2011

**BURWOOD/PEGASUS COMMUNITY BOARD
24 MAY 2011**

**Minutes of an extraordinary meeting of the Burwood/Pegasus Community Board
held on Tuesday 24 May 2011 at 4pm in the Board Room,
Corner Beresford and Union Streets, New Brighton.**

PRESENT: Linda Stewart (Chairperson), Tim Baker, David East, Julie Gorman,
Glenn Livingstone, Tim Sintes and Chrissie Williams.

APOLOGIES: Nil.

The Board reports that:

PART B - REPORTS FOR INFORMATION

1. DEPUTATIONS BY APPOINTMENT

Nil.

2. PARKLANDS COMMUNITY CENTRE

Further to the briefing given to the Board on 16 May 2011, the Board **received** the **attached** memorandum from staff, and an accompanying verbal update, on the feedback received from stakeholders and affected users regarding the proposal to temporarily relocate fitness services from Queen Elizabeth II Park to the Parklands Community Centre.

The Board was advised and understood that a decision on this proposal rested with Council staff.

Members asked a number of questions of the staff presenters in attendance.

On behalf of the Board, the Chairperson thanked the staff for the further information presented.

The Board **decided** to:

- (a) Support the temporary relocation of the Queen Elizabeth II Park fitness centre to the Parklands Community Centre.
- (b) Ask that staff take all reasonable means to ensure that all current users of the Parklands Community Centre are adequately catered for.
- (c) Advocate strongly for the rebuilding of a fitness and pool centre in the east of Christchurch as soon as practicably possible.

The meeting concluded at 4.40pm.

CONFIRMED THIS 13TH DAY OF JUNE 2011

**LINDA STEWART
CHAIRPERSON**

9. 6. 2011

Burwood/Pegasus Community Board 24.5.2011

- 2 -

Attachment to Clause 2

Memorandum

Subject: Temporary relocation of QEII Fitness Centre

To: Burwood/Pegasus Community Board

**From: Justin Leydesdorff, Northern Area Recreation
Manager, Christchurch City Council**

Date: 23 May 2011

1.0 Executive summary

This memo is to inform the board of the Recreation and Sport unit's proposal to temporarily relocate QEII Fitness Centre at Parklands Community Centre until such time that a permanent facility is available in the Eastern Suburbs. The memo also seeks the boards support in progressing the proposal.

QEII Recreation and Sport Centre (QEII) has been significantly damaged by the February 22 earthquake and is closed indefinitely. QEII received approximately 2 million community participation visits per annum. The Fitness Centre at QEII accounted for approximately 250,000 visits. Officers have investigated the feasibility of temporarily relocating the Fitness Centre until a permanent facility is available to allow the continuation of health and fitness opportunities in the eastern suburbs.

This option allows for the most expedient and cost effective way to provide health and fitness opportunities within the eastern suburbs temporarily. It is envisioned that the facility could be operational 4-6 weeks from when a decision to progress is made.

A survey of existing QEII members has shown that 84% are very likely or extremely likely to transfer their membership to the temporary facility.

The identified location is Parklands Community Centre located at 75 Queens Park Drive, Parklands. This facility consists of two main spaces, a sports hall and a sports lounge (currently tenanted by Parklands Sports Club).

It is proposed that the Fitness Centre be located within the sports hall and an arrangement be made with the sports club to use the sports lounge at certain times to replicate services provided at QEII.

A number of community groups that used the sports hall prior to the earthquake will need to be relocated or be included in an arrangement to use the sports lounge. Officers have engaged with these groups who are generally supportive and alternative solutions are being found (See Appendix B).

2.0 Background

The Burwood/Pegasus Board was briefed by Recreation and Sports officers on this proposal at the boards meeting on 16 May 2011. Officers asked the board for their view on officers continuing to work on the proposal. The board's response was generally positive with a request for further information regarding alternative options for existing user groups.

Council staff have continued to engage with these groups to discuss the proposal and identify alternative arrangements. (See Appendix B)

Temporary location

A range of buildings and locations were identified and assessed for suitability. This included commercial space, sports clubs and Council owned facilities. Key criteria included, minimum 300m², change and toilet facilities, parking, location in the eastern suburbs and the need for minimal set up costs.

Contributing factors to the preferred location include the above criteria as well as, high demand and low supply of suitable buildings post earthquake and the noticeable inflation of commercial rents.

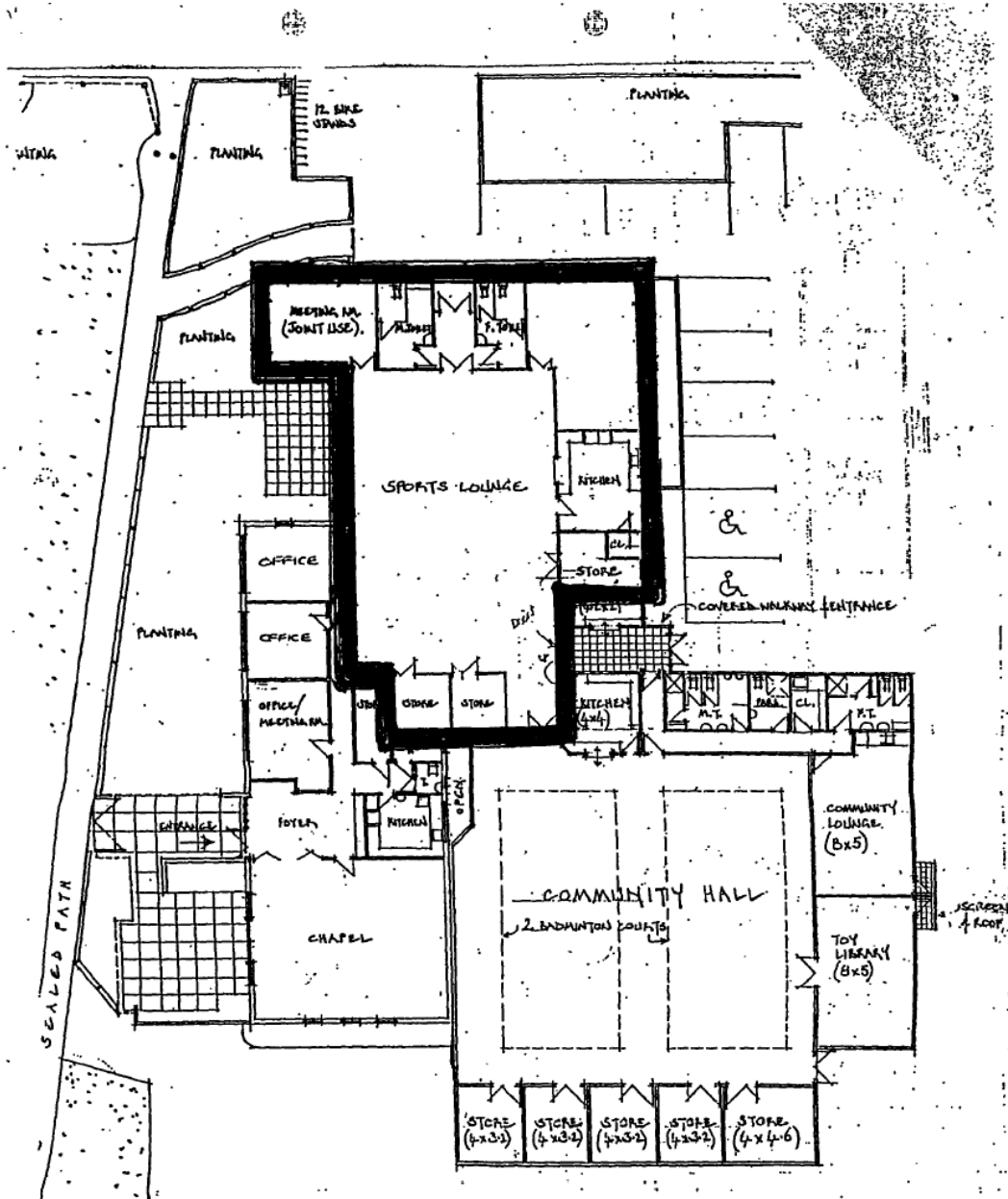
The preferred location is Parklands Community Centre located at 75 Queens Park Drive, Parklands. This facility consists of two main spaces, a sports hall and a sports lounge (currently tenanted by Parklands Sports Club). It also has a number of meeting rooms and associated offices. It is proposed that the Fitness Centre be located within the sports hall which has similar dimensions to QEII fitness and an arrangement be made with the Sports Club to use the sports lounge at certain times.

3.0 Next Steps

- Continue to engage with existing user groups at Parklands Community Centre to find alternative premises
- Enter into a 'Memorandum of understanding' with Parklands Sports Club for the use of the sports lounge
- Commence set up work to establish the temporary facility

ENDS

Appendix A - Parklands Community Centre, Floor Plan



FLOOR PLAN

1:200

RBW
4

Burwood/Pegasus Community Board 24.5.2011

Attachment to Clause 2 Cont'd

Appendix B - Parklands Community Centre, User group response & alternatives

Community Groups	Response	Alternative	Membership
Parklands United Sports Group	Positive for the community and agree in principle	No change. MOU for sharing of Sports Lounge	1500 +
Parklands Playgroup	Positive step for the community	Sports lounge	50+
Pegasus Toy Library	Positive step for the community	Meeting room next to existing store room	100+
Soccer for TOTS	Franchised out of Auckland will find alternative solution	Not currently operating	0
Parklands Table Tennis	Positive but wants to stay at the facility	Sports lounge	35
Sharon Rayner	Positive and has found alternative space.	Has alternative venue	1
Annesbrook Church	Positive agreed in principle and are currently operating out of alternative facilities	Church has been operating from alternative venue and have approached Council to terminate their lease	50
Chans Martial Arts	Neutral want to explore suitable options. Has a strong preference not to be displaced, however no suitable option is available to continue at the Community Centre	Is able to continue Tai Chi at the facility. Queenspark School hall is available as an alternative. Council has offered marketing assistance for any potential move.	70 approx
Parklands Karate	Neutral want to explore suitable options	Parkview lounge room, onsite.	10-12
Patricia Paul School of Dance	Operating out of alternative premises	Has alternative venue and can also operate from the Parkview Lounge	5
Parklands Junior Rugby	Neutral re alternatives as they require liquor licence every second week for club prizegiving and fundraising	Currently working with Council and Queenspark School on the use of the school hall. The club has indicated that the hall can meet their needs with some assistance from Council required.	200 approx
Parklands Wednesday Group	Positive for the community but wish to remain onsite	Sports lounge	
The Flying Kiwi Circus	Have already found alternative venue from July onwards	Not currently operating, has alternative venue from July.	unknown
Parklands Residents Group	Positive for the community, wishes to ensure community meeting rooms remain available	No change, meeting rooms will continue to be available within the complex.	6-10
Parklands Youth Trust	Positive for the community	Can be accommodated within the Parkview Lounge.	25