

11. 3. 2010

**BURWOOD/PEGASUS COMMUNITY BOARD  
15 FEBRUARY 2010**

**Minutes of a meeting of the Burwood/Pegasus Community Board  
held on Monday 15 February 2010 at 5pm in the Board Room,  
corner Beresford and Union Streets, New Brighton.**

**PRESENT:** David East (Chairman), Nigel Dixon, Tina Lomax, Gail Sheriff, Tim Sintes, Linda Stewart and Chrissie Williams.

**APOLOGIES:** An apology for early departure was received and accepted from Nigel Dixon who retired at 7.02pm and was not present for clauses 11, 14 and 15.

The Board reports that:

**PART A - REPORTS REQUIRING A COUNCIL DECISION**

**1. WINDSOR SCHOOL SPEED ZONE – VARIABLE SPEED LIMIT**



<b>General Manager responsible:</b>	General Manager City Environment, DDI: 941-8608
<b>Officer responsible:</b>	Transport and Greenspace Unit Manager
<b>Author:</b>	Jennie Hamilton, Capital Development Unit, Consultation Leader

**PURPOSE OF REPORT**

1. The purpose of this report is to seek the Council's approval for the installation of a new variable speed limit (40 kilometre per hour school zone) on Burwood Road, and its inclusion in the Christchurch City Speed Limits Register.

**EXECUTIVE SUMMARY**

2. The Council has a programme of installing 40 kilometre per hour variable speed limits (known as 'school zones') outside schools according to a prioritisation process (see paragraph 18). To date, 31 schools have benefited from this treatment. Windsor School is now ranked number two on the prioritisation list for a school speed zone after Linwood North School. The 40 kilometre per hour speed limit will operate on school days between 8.30am and 9am and between 2.55pm and 3.15pm.
3. Since adopting the Christchurch City Council Speed Limits Bylaw 2010 which became operative on 1 January 2010, the Council can resolve to make new variable speed limits. Accordingly, infrastructure for these school speed zones cannot be commissioned until the variable speed limits have been formally resolved by the Council.

**FINANCIAL IMPLICATIONS**

4. The recommendations of this report align with 2009-2019 Long Term Council Community Plan budgets.
5. There is sufficient funding in the budget to purchase the control box and signage for the Burwood Road school speed zone outside Windsor School this financial year and install the equipment in the 2010/11 financial year.

**Burwood/Pegasus Community Board 15.2.2010**

- 2 -

**1 Cont'd**

**LEGAL CONSIDERATIONS**

6. The proposed variable speed limit complies with the conditions specified and published by the Director of Land Transport New Zealand in the *New Zealand Gazette* (2/6/2005, number 3459, page 2051) approving a variable speed limit of 40 kilometres per hour in school zones and setting out conditions for those speed limits. A Council resolution is required to implement the speed limit restrictions.
7. The variable speed limit also complies with Land Transport Rule: Traffic Control Devices 2004.

**ALIGNMENT WITH LTCCP AND ACTIVITY MANAGEMENT PLANS**

8. This report's recommendations support the project objectives as outlined in the 2009-19 LTCCP (School Speed Zone Signs page 245).

**ALIGNMENT WITH STRATEGIES**

9. This project is consistent with key Council strategies including the Road Safety Strategy and the Pedestrian Strategy.

**CONSULTATION FULFILMENT**

10. A memorandum advised the Burwood/Pegasus Community Board of plans to install the proposed school speed zone in Burwood Road, outside Windsor School (**see Attachment 1**), on 24 November 2009.
11. When the project's consultation leader subsequently attended a Board meeting on 30 November 2009, Board members were supportive but a comment was made about the proximity to the Burwood Road/Queen Elizabeth II Drive/Travis Road intersection where there are plans to install traffic lights. The project's traffic engineer has since reviewed the proposed start of the school zone and confirmed that it meets legal and safety requirements.
12. Before the Council can set a variable speed limit pursuant to Clause 5(1) of the Christchurch City Speed Limits Bylaw 2010, the public consultation requirements set out in Section 7.1 of the Land Transport Rule Setting of Speed Limits 2003 Rule 54001 must be complied with. Section 7.1(2) provides that the persons that must be consulted before the Council sets a speed limit are:
  - (a) road controlling authorities that are responsible for roads that join, or are near, the road on which the speed limit is to be set or changed
  - (b) a territorial authority that is affected by the existing or proposed speed limit
  - (c) any local community that the road controlling authority considers to be affected by the proposed speed limit
  - (d) the Commissioner of Police
  - (e) the Chief Executive Officer of the New Zealand Automobile Association Incorporated
  - (f) the Chief Executive Officer of the Road Transport Forum New Zealand
  - (g) other organisation or road user group that the road controlling authority considers to be affected by the proposed speed limit
  - (h) the Director of Land Transport New Zealand.

**Burwood/Pegasus Community Board 15.2.2010**

- 3 -

**1 Cont'd**

13. Section 7.1(3) of the Rule provides:

A road controlling authority must consult by writing to the persons in 7.1(2) advising them of the proposed speed limit and giving them a reasonable time, which must be specified in the letter, to make submissions on the proposal. In terms of Section 7.1(2)(a) and 7.1(2)(b) there are no road controlling authorities or territorial authorities that are required to be consulted in respect of any of the proposed variable speed limits.

14. Representatives of the Commissioner of Police, the Director of Land Transport New Zealand, the Chief Executive Officer of the New Zealand Automobile Association Incorporated, the Secretary of the Taxi Federation and the Chief Executive Officer of the Road Transport Forum of New Zealand have received written advice of the proposed new variable speed limit in accordance with Section 7.1(2) (d), (e), (f) and (h). No other organisation or road user group is considered affected by the proposed speed limits. No neighbouring road controlling authority is affected. No issues were identified.
15. The consultation plan was circulated to 75 residents and property owners on 27 November 2009, and the school community. Three responses were received. One resident wanted the Council to stop drivers parking over his driveway entrance. This is an enforcement issue and outside the scope of the project. Another resident requested undergrounding. This too is outside the scope of the project and the 2009-2019 Long Term Council Community Plan has no funding for this purpose. A Clarevale Street resident expressed concern about the location of static back-to-back signs outside her property. The project's traffic engineer met the resident and her two neighbours and agreed that the signs could be located on a power pole near the Burwood Road intersection.
16. Windsor School administrators support the installation of a variable speed limit on Burwood Road outside their school and are prepared to operate it. Information about the proposed speed zone was posted out with newsletters to all the families of children attending the school.
17. The three respondents were sent a letter outlining the project team's responses to their suggestions and concerns. They were also advised of the Community Board meeting dates and that they should contact the Board Adviser if they wished to seek speaking rights.

**STAFF RECOMMENDATION**

It is recommended that the Burwood/Pegasus Community Board recommends that the Council approves:

- (a) The installation of a variable speed limit of 40 kilometres per hour (school speed zone) on Burwood Road (school zone) in accordance with the requirements of Section 7.1 of the Land Transport Setting of Speed Limits Rule 2003.
- (b) That pursuant to Clause 5(1) of the Christchurch City Speed Limits Bylaw 2010, a variable speed limit of 40 kilometres per hour apply on Burwood Road, commencing at a point 107 metres south-east of Helmsdale Street, and extending in a south-easterly direction along Burwood Road for a distance of 370 metres. The variable speed limit of 40 kilometres per hour is to apply on school days between 8.30am and 9am and between 2.55pm and 3.15pm.
- (c) That the abovementioned variable speed limit shall come into force on the date of adoption of the Council's resolution and will be enforceable following the installation of the variable speed limit signage as per the Land Transport Rule: Traffic Control Devices 2004 and New Zealand Transport Agency Traffic Note 37: 40 kilometres per hour variable speed limits in school zones – Guidelines.

1 Cont'd

**BOARD RECOMMENDATION**

That the staff recommendation be adopted.

**BACKGROUND**

18. Windsor School is currently No. 2 on the Council's prioritisation list for the installation of new school speed zones in Christchurch. This process ranks each road fronting a school by scoring the following 10 factors: road classification (i.e. local, major arterial etc), traffic volume, traffic speed, road environment (distractions, visibility etc), community interest, kerbside activity, children crossing roadway, cyclist volume, percentage of trucks, and whether a school patrol exists. There are 293 frontage roads at the 162 schools in the Christchurch city area.
19. Two options were considered by the project team. The first and preferred option is to install a temporary 40 kilometre per hour speed limit using electronic and static signage that operates outside Windsor School from 8.30am to 9am and 2.55pm to 3.15pm. The other option is to maintain the status quo. The school supports the installation of a variable speed limit in Burwood Road to improve safety for pupils.

**PART B - REPORTS FOR INFORMATION**

**2. DEPUTATIONS BY APPOINTMENT**

**2.1 MR AD DOBSON – BURWOOD ROAD**

Mr Dobson, of 194a Burwood Road who lives in close proximity to Windsor School, addressed the Board requesting the installation of parking restrictions immediately adjoining his vehicle entrance. The introduction of this measure would, in his view, allow unrestricted visibility and access to his property which is currently affected by parked cars associated with Windsor School.

The Chairman thanked Mr Dobson for his deputation.

The Board **decided** that the installation of parking limit lines outside Mr Dobson's Burwood Road property be considered by staff and a response provided back to the Board.

**3. PRESENTATION OF PETITIONS**

Nil.

**4. NOTICES OF MOTION**

Nil.

**5. CORRESPONDENCE**

The Board **received** tabled correspondence from the Shirley Intermediate School Jump Jam team thanking the Board for its funding support towards travel costs to attend the New Zealand Jump Jam Nationals held in Auckland in November 2009 and outlining the success the students achieved.

**6. BRIEFINGS**

**6.1 CUSTOMER SERVICES UNIT MANAGER**

David Dally, Customer Services Unit Manager briefed the Board on the role and work of the Unit.

After questions, perspectives and comments from members, the Chairman thanked Mr Dally for his briefing.

**6.2 MAIREHAU ROAD – REQUEST FOR A PEDESTRIAN REFUGE ISLAND**

Staff briefed the Board on the contents of a circulated memorandum responding to the Board's request for information on the location of, and timing for implementation of a requested pedestrian island on Mairehau Road adjacent to Daytona Place.

Following discussion with attending staff, the Board **received** the information provided in the memorandum.

**6.3 NEW ARANUI LIBRARY**

Carolyn Robertson and Sally Thompson from the Libraries and Information Unit, updated the Board on the new Aranui Library project. The site for the library overlooking Wainoni Park has just been publicly announced and work is progressing well on the preparation of the design brief for the building.

The staff advised that a photo wall at the recent AFFIRM event had drawn considerable interest from the local community and consultation with them on the plans for the library will continue.

The Chairman thanked staff for the update provided and indicated the Board's interest in being kept informed of progress.

**7. WAITIKIRI DRIVE AND BOTTLE LAKE FOREST PARK ENTRANCE**

The Board considered a report seeking a decision not to proceed with road markings on Waitikiri Drive, and for its support for a new entrance to Bottle Lake Forest Park to be put forward for consideration in the 2012-22 LTCCP.

Staff in attendance responded to comments and questions from members.

The Board **decided** that the staff report lie on the table and that a Board workshop be held to consider the future priorities for Bottle Lake Forest Park.

**8. INFORMATION ON INSTALLING A BUS SHELTER AT 26 NEW BRIGHTON**

The Board considered a report regarding information on the provision of a bus shelter at 26 New Brighton Road and the criteria used to prioritise the placement of bus shelters.

The Board **decided**:

- (a) That the report lie on the table.
- (b) That staff provide further information back to the Board on patronage figures for the bus stop, details of the current bus services using the stop, and measures needed to improve the condition and immediate area around the existing bus stop.

**Burwood/Pegasus Community Board 15.2.2010**

- 6 -

**9. RESIDENT'S ASSOCIATIONS/COMMUNITY ORGANISATIONS**

Representatives from the Parklands Residents' Association updated the Board on the activities of the group, including their Annual General Meeting on 3 June 2010, a 'What's on in Parklands' event scheduled for September and a newsletter to residents to be issued in July and October.

The Association referred to various traffic issues occurring in the Broadhaven Avenue/Bower Avenue area and it was suggested that appropriate staff attend a meeting of the Association to discuss the concerns raised.

The Association also expressed a desire to be involved in relation to any Council considerations regarding the future of Bottle Lake Forest Park.

The Chairman thanked the representatives for attending and updating the Board.

**10. COMMUNITY BOARD ADVISER'S UPDATE**

The Board **received**:

- Information on Board related activity and community events over the coming weeks including the Burwood/Pegasus Community Networking Forum on 24 February 2010, Burwood/Pegasus Community Pride Garden Awards function on Saturday 6 March 2010, Bottle Lake Forest Park Orienteering Day event on 21 February 2010 and the Combined Residents' Associations (eastern area of Christchurch) meeting convened by the Mayor regarding Tsunami Warnings, on 2 March 2010.
- Consultation Calendar - relevant extracts from the Council's Consultation Calendar as at 15 February 2010.
- Draft Board Objectives 2010.

The Board **decided** to adopt the Burwood/Pegasus Community Board Objectives for 2010, as amended.

- Board Funding 2009/10 – an update on the status of the Board's Discretionary Response Fund, Youth Development Scheme Fund and the Emergency Response Fund.
- Chief Executive's January 2010 Council Update.
- Customer Services Request Report - statistics for the period 1 December 2009 to 31 January 2010.

**11. BOARD MEMBERS QUESTIONS**

Nil.

**PART C - REPORT ON DELEGATED DECISIONS TAKEN BY THE BOARD**

**12. CONFIRMATION OF MEETING MINUTES – 1 FEBRUARY 2010**

The Board **resolved** that the minutes of its meeting of 1 February 2010, be confirmed.

11. 3. 2010

**Burwood/Pegasus Community Board 15.2.2010**

- 7 -

**13. BURWOOD/PEGASUS YOUTH DEVELOPMENT SCHEME FUND – APPLICATION – EMMA GIN**

The Board considered a report seeking funding from its 2009/10 Youth Development Scheme fund.

The Board **resolved** to allocate \$300 from its 2009/10 Youth Development Scheme fund to Emma Gin to attend the Golden Key Conference in Sydney Australia from 28 to 30 January 2010.

(Note: The meeting stood adjourned at 6.49pm and resumed at 6.56pm.)

**14. RESOLUTION TO EXCLUDE THE PUBLIC**

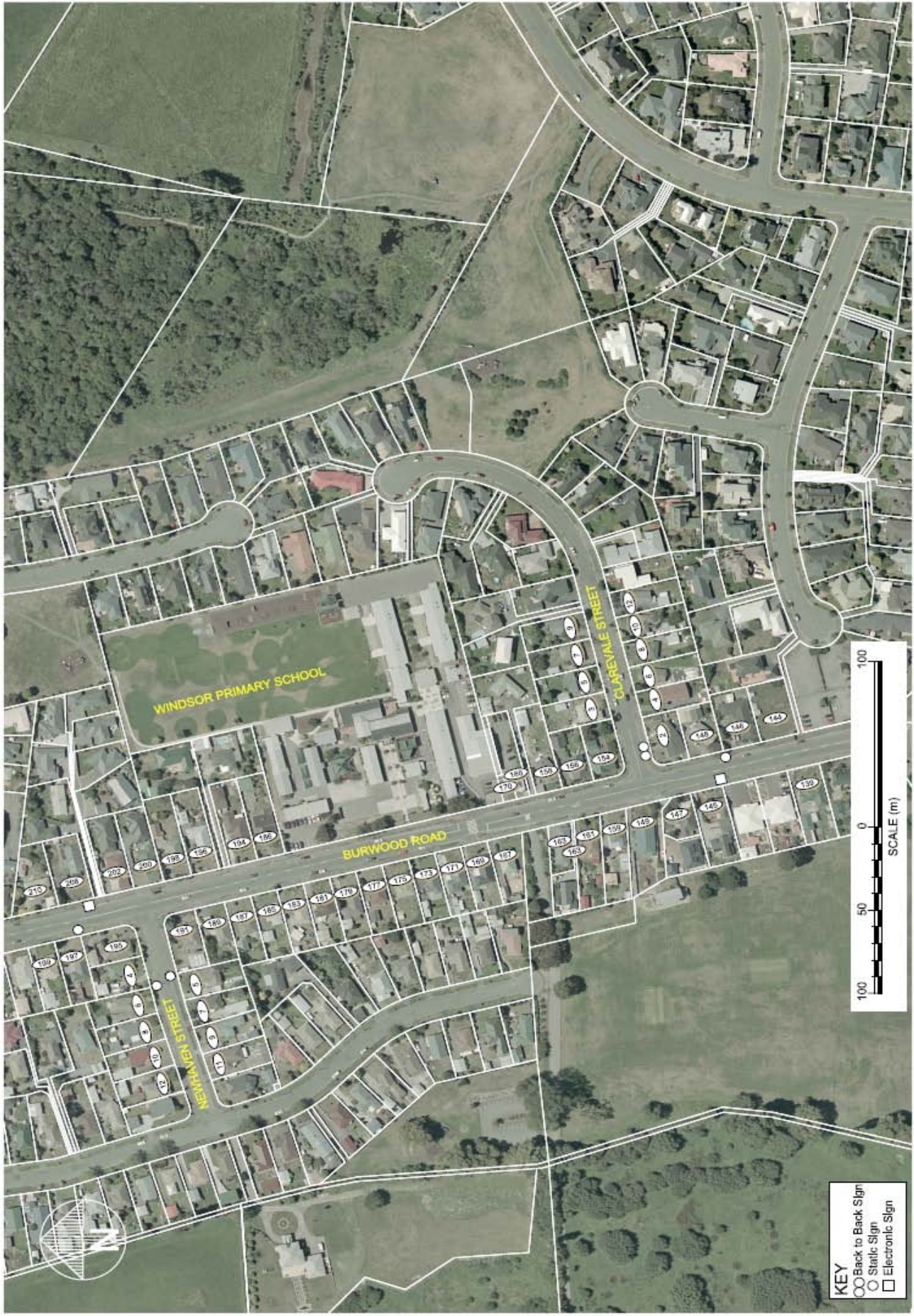
The Board **resolved** that the resolution set out on page 46 of the agenda, be adopted.

The meeting concluded at 7.20pm.

**CONFIRMED THIS 1ST DAY OF MARCH 2010**

**DAVID EAST  
CHAIRMAN**





Original Plan Size: A3  
 ISSUE: 2 11/01/10  
 TG103801 AHP 500881

**WINDSOR PRIMARY SCHOOL SPEED ZONE**

For Council Approval



- KEY**
- ⊖ Back to Back Sign
  - Static Sign
  - Electronic Sign

© Copyright Christchurch City Council. All Rights Reserved. Aerial Photography Copyright Terralink International Ltd