

10. 6. 2010

**SPREYDON/HEATHCOTE COMMUNITY BOARD  
30 APRIL 2010**

**Report of a meeting of the Spreydon/Heathcote Community Board  
held on Friday 30 April 2010 at 8.03am  
in the Boardroom, Beckenham Service Centre, 66 Colombo Street, Christchurch**

**PRESENT:** Phil Clearwater, (Chairperson), Oscar Alpers, Barry Corbett, Chris Mene, Karolin Potter, Tim Scandrett and Sue Wells.

**APOLOGIES:** Sue Wells departed at 10.12am and was absent for clauses 6, 7, 8 and 10.

The public were excluded at 9.55am and readmitted at 10.12am.

The Board reports that:

**PART A – MATTERS REQUIRING A COUNCIL DECISION**

**1. COLOMBO STREET BUS PRIORITY PROJECT – MOORHOUSE AVENUE TO BROUGHAM STREET – PARKING RESOLUTION AMENDMENTS**

<b>General Manager responsible:</b>	General Manager, City Environment Group, DDI 941- 8608
<b>Officer responsible:</b>	Transport and Greenspace Manager
<b>Author:</b>	Greg Rozen, Project Manager - Major Transport Projects DDI 941-8219

**PURPOSE OF REPORT**

1. The purpose of this report is to obtain Council approval of minor changes on Colombo Street Bus Priority project between Moorhouse Avenue and Brougham Street. This report also contains a recommendation to reinstall a previously removed Bus Stop, following a review of bus stop infrastructure and parking resolutions along this corridor during the detailed design phase of the project.

**EXECUTIVE SUMMARY**

2. On 15 May 2008, the Council approved the Colombo Street Bus Priority Route (refer **Attachment 1**).
3. The Sydenham section of the Colombo Bus Priority Route, included the cutting back of all the canopies on the East side of Colombo Street between Carlyle Street and Waverley Street.
4. Subsequently, in the detailed design stage, it was determined that these verandas are listed as heritage buildings. It was therefore decided that it was not appropriate to make any changes to these verandas. A new design solution has therefore been developed. This provides a 4.2 metre wide bus lane with minimal disruption. It also includes removing the build out on the West side of Colombo Street, opposite 359 Colombo Street and relocating the pedestrian refuge 10 metres North.
5. This proposed design change results in not only improved cyclist and pedestrian safety but an increase of four car parks. Two on the West side of Colombo Street, between Elgin Street and Stanley Street, and two on the East side of Colombo Street, between Waverley and Wordsworth Streets (refer **Attachments 2 and 3**).

## **Spreydon/Heathcote Community Board 30.4.2010**

### **1 Cont'd**

6. On 15 May 2008, the Council also revoked the existing bus stop, East side of Colombo Street commencing 16 metres South of its intersection with Waverley Street and extending 62 metres in a southerly direction.
7. The removal of the bus stop was related to the Sydenham Square development, which has been placed on hold. Thus there is no need to incur costs in removing this bus stop at this time. This bus stop is a timing station for the buses and can hold up to four buses at anytime.
8. This proposed design change, refers to maintaining the status quo at this location (refer Attachments 2 and 3).
9. To facilitate these changes and to ensure accuracy along the route between Moorhouse Avenue and Brougham Street all resolutions need to be amended for this section of Colombo Street Therefore staff will be seeking the revocation of previous bus stop, no stopping and parking resolutions for this section of Colombo Street and resolve new bus stop, parking and no stopping resolutions. The new scheme plans and traffic resolutions are included in the staff recommendations section of this report.

### **FINANCIAL IMPLICATIONS**

10. All changes can be accommodated within existing funding for the project.

### **Do the Recommendations of this Report Align with 2009-19 LTCCP budgets?**

11. This work will be funded from the existing Bus Priority project. Spreydon/Heathcote Community Board Continuance Agenda 30 April 2010.

### **LEGAL CONSIDERATIONS**

12. Part 1, Clause 5 of the Christchurch City Council Traffic and Parking Bylaw 2008 provides Council with the authority to install parking restrictions by resolution.
13. The Community Boards have delegated authority form Council to exercise the delegations as set out in the Register of Delegations dated April 2008. The list of delegations for the Community Board includes the resolution of parking restrictions and Traffic Control Devices.
14. The installation of any parking restriction signs and/or marking must comply with the Land Transport Rule: Traffic Control Devices 2004.

### **Have you considered the legal implications of the issue under consideration?**

15. Yes, as above.

### **ALIGNMENT WITH LTCCP AND ACTIVITY MANAGEMENT PLANS**

16. Funding for the Bus Priority project is programmed in the 2009–19 Long Term Council Community Plan (LTCCP).

### **Do the recommendations of this report support a level of service or project in the 2009-19 LTCCP?**

17. Yes, as above.

## Spreydon/Heathcote Community Board 30.4.2010

### 1 Cont'd

#### ALIGNMENT WITH STRATEGIES

18. This project is consistent with the National Transport Strategy, as well as key regional and local Council strategies including the Regional Land Transport Strategy, Metropolitan Christchurch Transport Statement, Public Passenger Transport Strategy, Pedestrian Strategy, Parking Strategy, Cycling Strategy, Road Safety Strategy, Citywide Public Transport Priority Plan, Metro Strategy 2006-2012, and the Greater Christchurch Urban Development Strategy.

#### Do the recommendations align with the Council's strategies?

19. Yes, as above.

#### CONSULTATION FULFILMENT

20. Consultation has been undertaken with the Operations Manager at Environment Canterbury. No additional consultation has been undertaken. The number of carparks in front of existing businesses on Colombo Street is being increased from the number provided in the plan approved in May 2008. It is therefore not anticipated that there would be opposition from adjoining business owners.

#### STAFF RECOMMENDATION

It is recommended that the Council:

- (a) Approve the concept plans as shown in attachment TP316418.
- (b) Approve the following parking restrictions to take effect following completion of construction;

##### **Colombo Street: West side (Stanley to Brougham)**

- (i) That all parking restrictions on the West side of Colombo Street commencing at its intersection with Stanley Street and extending in a southerly direction to its intersection with Brougham Street be revoked.
- (ii) That the stopping of vehicles be prohibited at any time on the West side of Colombo Street commencing at its intersection with Stanley Street and extending in a southerly direction to its intersection with Brougham Street.

##### **Colombo Street: West side (Elgin to Stanley)**

- (iii) That all parking restrictions on the West side of Colombo Street commencing at its intersection with Elgin Street and extending in a southerly direction to its intersection with Stanley Street be revoked.
- (iv) That the stopping of vehicles be prohibited at any time on the West side Colombo Street commencing at its intersection with Elgin Street and extending in a southerly direction for a distance of 45 metres.
- (v) That the parking of vehicles be restricted to a maximum period of 30 minutes on the West side of Colombo Street commencing at a point 45 metres South of its intersection with Elgin Street and extending in a southerly direction for a distance of 36 metres.
- (vi) That the stopping of vehicles be prohibited from 8pm to 7am (seven days a week) on the West side Colombo Street commencing at a point 45 metres South of its intersection with Elgin Street and extending in a southerly direction for a distance of 36 metres.

## Spreydon/Heathcote Community Board 30.4.2010

### 1 Cont'd

- (vii) That the stopping of vehicles be prohibited at any time on the West side Colombo Street commencing at a point 81 metres South of its intersection with Elgin Street and extending in a southerly direction for a distance of four metres.
- (viii) That a Bus Stop be installed on the West side of Colombo Street commencing at a point 85 metres South of its intersection with Elgin Street and extending in a southerly direction for a distance of 14 metres.
- (ix) That the stopping of vehicles be prohibited at any time on the West side Colombo Street commencing at its intersection with Stanley Street and extending in a northerly direction for a distance of eight metres.

#### **Colombo Street: West Side (Wordsworth to Elgin)**

- (x) That all parking restrictions on the West side of Colombo Street commencing at its intersection with Wordsworth Street and extending in a southerly direction to its intersection with Elgin Street be revoked.
- (xi) That the stopping of vehicles be prohibited at any time on the West side Colombo Street commencing at its intersection with Wordsworth Street and extending in a southerly direction for a distance of 39 metres.
- (xii) That the parking of vehicles be restricted to a maximum period of 30 minutes on the West side of Colombo Street commencing at a point 39 metres South of its intersection with Wordsworth Street and extending in a southerly direction for a distance of 40 metres.
- (xiii) That a loading zone with a time limit of five minutes on the West side of Colombo Street commencing at a point 79 metres South of its intersection with Wordsworth Street and extending in a southerly direction for a distance of 14 metres.
- (xiv) That the stopping of vehicles be prohibited at any time on the West side Colombo Street commencing at its intersection with Elgin Street and extending in a northerly direction for a distance of 16 metres.

#### **Colombo Street: West Side (Battersea to Wordsworth)**

- (xv) That all parking restrictions on the West side of Colombo Street commencing at its intersection with Battersea Street and extending in a southerly direction to its intersection with Wordsworth Street be revoked.
- (xvi) That the stopping of vehicles be prohibited at any time on the West side Colombo Street commencing at its intersection with Battersea Street and extending in a southerly direction for a distance of 16 metres.
- (xvii) That the parking of vehicles be restricted to a maximum period of 30 minutes on the West side of Colombo Street commencing at a point 16 metres South of its intersection with Battersea Street and extending in a southerly direction for a distance of 59 metres.
- (xviii) That the stopping of vehicles be prohibited at any time on the West side of Colombo Street commencing at a point 75 metres South of its intersection with Battersea Street and extending in a southerly direction for a distance of four metres.
- (xix) That a Bus Stop be installed on the West side of Colombo Street commencing at a point 79 metres South of its intersection with Battersea Street and extending in a southerly direction for a distance of 24 metres.

## Spredon/Heathcote Community Board 30.4.2010

### 1 Cont'd

- (xx) That the stopping of vehicles be prohibited at any time on the West side Colombo Street commencing at its intersection with Wordsworth Street and extending in a northerly direction for a distance of nine metres.

#### **Colombo Street: West Side (Sandyford to Battersea)**

- (xxi) That all parking restrictions on the West side of Colombo Street commencing at its intersection with Sandyford Street and extending in a southerly direction to its intersection with Battersea Street be revoked.
- (xxii) That the stopping of vehicles be prohibited at any time on the West side Colombo Street commencing at its intersection with Sandyford Street and extending in a southerly direction for a distance of 41 metres.
- (xxiii) That a loading zone with a time limit of five minutes on the West side of Colombo Street commencing at a point 41 metres South of its intersection with Sandyford Street and extending in a southerly direction for a distance of eight metres.
- (xxiv) That the parking of vehicles be restricted to a maximum period of 30 minutes on the West side of Colombo Street commencing at a point 49 metres South of its intersection with Sandyford Street and extending in a southerly direction for a distance of six metres
- (xxv) That the stopping of vehicles be prohibited at any time on the West side Colombo Street commencing at a point 55 metres South of its intersection with Sandyford Street and extending in a southerly direction for a distance of four metres.
- (xxvi) That the parking of vehicles be restricted to a maximum period of 30 minutes on the West side of Colombo Street commencing at a point 59 metres South of its intersection with Sandyford Street and extending in a southerly direction for a distance of 36 metres
- (xxvii) That the stopping of vehicles be prohibited at any time on the West side Colombo Street commencing at its intersection with Battersea Street and extending in a northerly direction for a distance of 14 metres.

#### **Colombo Street: West Side (Cass to Sandyford)**

- (xxviii) That all parking restrictions on the West side of Colombo Street commencing at its intersection with Cass Street and extending in a southerly direction to its intersection with Sandyford Street be revoked.
- (xxix) That the stopping of vehicles be prohibited at any time on the West side Colombo Street commencing at its intersection with Cass Street and extending in a southerly direction for a distance of 23 metres.
- (xxx) That a bus stop be installed on the West side of Colombo Street commencing at a point 23 metres South of its intersection with Cass Street and extending in a southerly direction for a distance of 14 metres.
- (xxxii) That the stopping of vehicles be prohibited at any time on the West side Colombo Street commencing at its intersection with Sandyford Street and extending in a northerly direction for a distance of 21 metres.

#### **Colombo Street: West Side (Moorhouse to Cass)**

- (xxxii) That all parking restrictions on the West side of Colombo Street commencing at its intersection with Moorhouse Avenue and extending in a southerly direction to its intersection with Cass Street be revoked.

## Spreydon/Heathcote Community Board 30.4.2010

### 1 Cont'd

(xxxiii) That the stopping of vehicles be prohibited at any time on the West side Colombo Street commencing at its intersection with Moorhouse Avenue and extending in a southerly direction to its intersection with Cass Street.

#### **Colombo Street: East Side (Brougham to Wordsworth)**

(xxxiv) That all parking restrictions on the East side of Colombo Street commencing at its intersection with Wordsworth Street and extending in a southerly direction to its intersection with Brougham Street be revoked.

(xxxv) That the stopping of vehicles be prohibited at any time on the East side of Colombo Street commencing at its intersection with Wordsworth Street and extending in a Southerly direction for a distance of 16 metres.

(xxxvi) That a bus stop be installed on the East side of Colombo Street commencing at a point 16 metres South of its intersection with Wordsworth Street and extending in a southerly direction for a distance of 17 metres.

(xxxvii) That the stopping of vehicles be prohibited at any time on the East side of Colombo Street commencing at a point 33 metres South of its intersection with Wordsworth Street and extending in a southerly direction for a distance of four metres.

(xxxviii) That the stopping of vehicles be prohibited from 4pm to 6pm Monday to Friday on the East side of Colombo Street commencing at a point 37 metres South of its intersection with Wordsworth Street and extending in a southerly direction for a distance of 84 metres.

(xxxix) That the parking of vehicles be restricted to a maximum period of 30 minutes between 8am and 4pm Monday to Friday and 8am to 6pm Saturday and Sunday on the East side of Colombo Street commencing at a point 37 metres South of its intersection with Wordsworth Street and extending in a southerly direction for a distance of 84 metres.

(xl) That the stopping of vehicles be prohibited at any time on the East side of Colombo Street commencing at a point 121 metres South of its intersection with Wordsworth Street and extending in a southerly direction for a distance of 20 metres.

(xli) That the stopping of vehicles be prohibited from 4pm to 6pm Monday to Friday on the East side of Colombo Street commencing at a point 141 metres South of its intersection with Wordsworth Street and extending in a southerly direction for a distance of 17 metres.

(xlii) That the parking of vehicles be restricted to a maximum period of 30 minutes between 8am and 4pm Monday to Friday and 8am to 6pm Saturday and Sunday on the East side of Colombo Street commencing at a point 141 metres South of its intersection with Wordsworth Street and extending in a southerly direction for a distance of 17 metres

(xlili) That the stopping of vehicles be prohibited from 8pm to 7am (seven days a week) on the East side Colombo Street commencing at a point 141 metres South of its intersection with Wordsworth Street and extending in a southerly direction for a distance of 17 metres.

(xliv) That the stopping of vehicles be prohibited at any time on the East side of Colombo Street commencing at a point 158 metres South of its intersection with Wordsworth Street and extending in a southerly direction for a distance of 35 metres.

(xlv) That a Bus Stop be installed on the East side of Colombo Street commencing at a point 193 metres South of its intersection with Wordsworth Street and extending in a southerly direction for a distance of 61 metres.

## Spreydon/Heathcote Community Board 30.4.2010

### 1 Cont'd

- (xlvi) That the stopping of vehicles be prohibited at any time on the East side Colombo Street commencing at its intersection with Brougham Street and extending in a northerly direction for a distance of 35 metres.

#### **Colombo Street: East Side (Wordsworth to Lawson)**

- (xlvii) That all parking restrictions on the East side of Colombo Street commencing at its intersection with Lawson Street and extending in a southerly direction to its intersection with Wordsworth Street be revoked.
- (xlviii) That the stopping of vehicles be prohibited at any time on the East side of Colombo Street commencing at its intersection with Lawson Street and extending in a southerly direction to its intersection with Wordsworth Street.

#### **Colombo Street: East Side (Byron to Lawson)**

- (xlix) That all parking restrictions on the East side of Colombo Street commencing at its intersection with Byron Street and extending in a southerly direction to its intersection with Lawson Street be revoked.
- (l) That the stopping of vehicles be prohibited at any time on the East side of Colombo Street commencing at its intersection with Byron Street and extending in a southerly direction for a distance of 13 metres.
- (li) That a Bus Stop be installed on the East side of Colombo Street commencing at a point 13 metres South of its intersection with Byron Street and extending in a southerly direction for a distance of 19 metres.
- (lii) That the stopping of vehicles be prohibited at any time on the East side of Colombo Street commencing at a point 32 metres South of its intersection with Byron Street and extending in a southerly direction for a distance of four metres.
- (liii) That a loading zone with a time limit of five minutes (8am and 4pm Monday to Friday and 8am to 6pm Saturday and Sunday) on the East side of Colombo Street commencing at a point 36 metres South of its intersection with Byron Street and extending in a southerly direction for a distance of 10 metres.
- (liv) That the stopping of vehicles be prohibited from 4pm to 6pm Monday to Friday on the East side of Colombo Street commencing at a point 36 metres South of its intersection with Byron Street and extending in a southerly direction for a distance of 59 metres.
- (lv) That the parking of vehicles be restricted to a maximum period of 30 minutes between 8am and 4pm Monday to Friday and 8am to 6pm Saturday and Sunday on the East side of Colombo Street commencing at a point 46 metres South of its intersection with Byron Street and extending in a southerly direction for a distance of 49 metres.
- (lvi) That the stopping of vehicles be prohibited at any time on the East side of Colombo Street commencing at a point 95 metres South of its intersection with Byron Street and extending in a southerly direction for a distance of 19 metres.
- (lvii) That the stopping of vehicles be prohibited from 4pm to 6pm Monday to Friday on the East side of Colombo Street commencing at a point 114 metres South of its intersection with Byron Street and extending in a southerly direction for a distance of 60 metres.

## Spreydon/Heathcote Community Board 30.4.2010

### 1 Cont'd

- (lvii) That the parking of vehicles be restricted to a maximum period of 30 minutes between 8am and 4pm Monday to Friday and 8am to 6pm Saturday and Sunday on the East side of Colombo Street commencing at a point 114 metres South of its intersection with Byron Street and extending in a southerly direction for a distance of 60 metres.
- (lviii) That the stopping of vehicles be prohibited at any time on the East side of Colombo Street commencing at its intersection with Lawson Street and extending in a northerly direction for a distance of nine metres.

#### **Colombo Street: East Side (Carlyle to Byron)**

- (lix) That all parking restrictions on the East side of Colombo Street commencing at its intersection with Carlyle Street and extending in a southerly direction to its intersection with Byron Street be revoked.
- (lx) That the stopping of vehicles be prohibited at any time on the East side of Colombo Street commencing at its intersection with Carlyle Street and extending in a southerly direction for a distance of seven metres.
- (lxi) That the stopping of vehicles be prohibited from 4pm to 6pm Monday to Friday on the East side of Colombo Street commencing at a point seven metres South of its intersection with Carlyle Street and extending in a southerly direction for a distance of 72 metres.
- (lxii) That the parking of vehicles be restricted to a maximum period of 30 minutes between 8am and 4pm Monday to Friday and 8am to 6pm Saturday and Sunday on the East side of Colombo Street commencing at a point seven metres South of its intersection with Carlyle Street and extending in a southerly direction for a distance of 72 metres.
- (lxiii) That the stopping of vehicles be prohibited at any time on the East side of Colombo Street commencing at its intersection with Byron Street and extending in a northerly direction for a distance of 39 metres.

#### **Colombo Street: East Side (Moorhouse to Carlyle)**

- (lxiv) That all parking restrictions on the East side of Colombo Street commencing at its intersection with Moorhouse Avenue and extending in a southerly direction to its intersection with Carlyle Street be revoked.
- (lxv) That the stopping of vehicles be prohibited at any time on the East side of Colombo Street commencing at its intersection with Moorhouse Avenue and extending in a southerly direction to its intersection with Carlyle Street.

### **BOARD RECOMMENDATION**

The Board considered a report seeking approval of minor changes on Colombo Street Bus Priority project between Moorhouse Avenue and Brougham Street. The report contained a recommendation to reinstall a previously removed Bus Stop, following a review of bus stop infrastructure and parking resolutions along this corridor during the detailed design phase of the Bus Priority Project.

The Board **decided** to approve the staff recommendations (a) and (b) subject to positive feedback from affected business owners with a staff memorandum to be received by the Spreydon/Heathcote Community Board by 7 May 2010 confirming this feedback.

Karolin Potter asked that her abstention from the vote be recorded.



## Spreydon/Heathcote Community Board 30.4.2010

### 1 Cont'd

#### ADDITIONAL STAFF COMMENT

21. Council Staff visited 16 businesses on Colombo Street between Stanley Street and Brougham Street on Tuesday 4 May 2010. Business owners were asked to provide their opinion with regard to a number of minor changes from the original documents in relation to the bus lane plan. Businesses were also advised when construction was anticipated to begin and a copy of the plan was left together with staff contact details.
22. Sixteen responses were received, all of which had no issues with changes.
23. Overall feedback was positive and a small number of questions were answered and project information clarified. The business owners were appreciate of the visit and the information provided as well as the opportunity to speak with Council staff.

### PART B – REPORTS FOR BOARD INFORMATION

#### 2. DEPUTATIONS

Jan Rogers and Tracey Scott from Community Mediation presented to the Board an outline of their organisation and the services offered. The group are currently working through the Family and Community Division of Anglican Care and have been developing strong connections with agencies such as the Family Courts, Housing New Zealand, Community Police, schools, and the local community. Community Mediation also offers comprehensive mediation training.

Following discussion with the Board, the Chairperson thanked the deputation for their informative presentation.

#### 3. PETITIONS

Nil.

#### 4. NOTICE OF MOTION

Nil.

#### 5. CORRESPONDENCE

The Board received correspondence from Manning Intermediate School regarding a proposed Pou Whenua at the entrance to the new school and community hall.

The Board **decided** to request staff to prepare a report in relation to the correspondence with a funding option from the Spreydon/Heathcote's Discretionary Response Fund.

#### 6. BRIEFINGS

- 5.1 The briefing from Gary Lennan, Inspections and Enforcement Unit Manager, to the Board on the work of his unit was postponed until a later meeting.
- 5.2 The briefing from David Dally, Customer Services Unit Manager, to the Board on the work of his unit was postponed until a later meeting.

## Spreydon/Heathcote Community Board 30.4.2010

### 7. COMMUNITY BOARD ADVISER'S UPDATE

The Board received an update from the Community Board Adviser on forthcoming Board related activities.

The Board requested that staff write to Brett McGregor congratulating him on the recent Master Chef competition win.

### 8. ELECTED MEMBERS INFORMATION EXCHANGE

Mention was made of the following matters:

- Chlorination of the city water supply  
The Board **decided** to request information from staff on the extent and frequency of chlorination of the Christchurch water supply.
- Pollution of the Heathcote River.
- Manhole covers, in relation to pedestrian safety, particularly in the hill suburbs.
- Ongoing tree matters within the ward.

### 9. MEMBERS QUESTIONS UNDER STANDING ORDERS

Nil.

## PART C – REPORT ON DELEGATED DECISIONS TAKEN BY THE BOARD

### 10. CONFIRMATION OF MEETING REPORTS

The Board **resolved** that the minutes of the ordinary meeting of the Board held on 13 April 2010 be confirmed.

### 11. APPROVALS OF THE SPREYDON/HEATHCOTE COMMUNITY BOARD SUBMISSIONS TO THE CHRISTCHURCH CITY COUNCIL

The Board considered the Spreydon/Heathcote's Board submission to the Christchurch City Council Draft Annual Plan 2010-11, and the Draft Climate Smart Strategy.

The Board **resolved** to ratify the Spreydon/Heathcote's Board submission to the Christchurch City Council Draft Annual Plan 2010-11, and the Draft Climate Smart Strategy.

### 12. BECKENHAM SHOPPING COMPLEX OF 140 COLOMBO STREET

The Board considered a report outlining the traffic implications of construction of a two-way entry/exit on the Tennyson Street road frontage of 140 Colombo Street.

#### STAFF RECOMMENDATION

If the Community Board wishes to progress this matter, it recommend that the Council give consideration to the Colombo Street/Tennyson Street traffic improvements referred to in this report as part of the 2012 Long Term Community Council Plan (LTCCP).

**Spreydon/Heathcote Community Board 30.4.2010****12 Cont'd****BOARD RECOMMENDATION**

The Board **resolved** to request that staff provide a report for the 18 May 2010 Spreydon/Heathcote Community Board meeting in relation to the Beckenham shopping complex located at 140 Colombo Street containing the following information:

- (a) Results of consultation around possible changes to alter the exit/entry off Tennyson Street and removal of parking on Tennyson Street.
- (b) Possible impact on bus lanes in Colombo Street following improvements.
- (c) Additional information around the advice from staff to the centre developer regarding the initial application.
- (d) Written indication from the developer regarding his position in relation to the changes.
- (e) Options for funding the necessary improvements.

The Board further **resolved** that the Board would contribute \$5,000 from Spreydon/Heathcote Community Board funding towards the construction of improvements related to the exit/entry on Tennyson Street, subject to the balance being funded by the Council and/or the developer.

The Spreydon/Heathcote Community Board will not fund any of the resource consent costs.

**13. RESOLUTION TO EXCLUDE THE PUBLIC**

The Board **resolved** that the resolution to exclude the public set out on page 22 of the agenda be adopted.

The meeting concluded at 10.26am.

**CONFIRMED THIS 18TH DAY OF MAY 2010**

**PHIL CLEARWATER  
CHAIRPERSON**



**REPORT BY THE CHAIRPERSON OF THE  
SPREYDON/HEATHCOTE COMMUNITY BOARD  
15 APRIL 2008**

**PART A – MATTERS REQUIRING A COUNCIL DECISION**

**1. COLOMBO STREET / CITY SOUTH BUS PRIORITY ROUTE**

<b>General Manager responsible:</b>	General Manager City Environment Group, DDI 941-8608
<b>Officer responsible:</b>	Transport & Greenspace Unit Manager
<b>Author:</b>	Kirsten Mahoney, Consultation Leader – Transport

**PURPOSE OF REPORT**

1. The purpose of this report is to seek the approval of the Council to proceed to detailed design, tender and construction for the Colombo Street / City South bus priority route, as shown in the plans for Council approval. (**Attachment 1a,1b,1c.**)

**EXECUTIVE SUMMARY**

2. The bus priority project is about ensuring that passengers can be confident that public transport will arrive on time and deliver them on time to their destinations. This project is supported by key national and regional strategies that are developed through to local Council strategies and policies.
3. Under the Citywide Public Transport Priority Plan, the second corridor for investigation and scheme design was Princess Margaret Hospital (PMH) from / to the Exchange, via Colombo Street. This corridor extends from the intersection of Colombo Street and Moorhouse Avenue South to Cashmere / Centaurus / Colombo / Dyers Pass roundabout, before turning right into Cashmere Road and terminating at Princess Margaret Hospital.
4. The main areas of congestion in the morning peak period are on the Cashmere, Centaurus and Dyers Pass approaches to the Cashmere / Centaurus / Colombo / Dyers Pass roundabout; and on the Colombo Street South approach to the Brougham Street intersection. In the afternoon peak period the main areas of congestion are from Lichfield Street to Milton Street in both directions, but predominantly southbound; around the Tennyson Street and Strickland Street shopping area; and on the Colombo Street approach to the Cashmere / Centaurus / Colombo / Dyers Pass roundabout.
5. The congestion appears to be caused by:
  - High traffic volumes on intersecting roads that reduce the amount of green time available for Colombo Street traffic.
  - Vehicles entering and exiting from on-street car parking outside shops delaying vehicles in the traffic lane.
  - Unevenly balanced traffic flows at the Cashmere / Centaurus / Colombo / Dyers Pass roundabout reducing the efficiency of this roundabout.
6. The Colombo bus priority route is located entirely within the Spreydon / Heathcote Community Board area.

7. Community consultation was undertaken on the Colombo Route from 15 October 2007 – 17 December 2007. Of the 136 responses received, 94 (69 percent) were generally in support of the project, 29 (21 percent) were opposed to the project, and 13 (10 percent) specified no preference. In addition, there were four route specific seminars held, as well as three meetings with representatives of the Sydenham businesses and Sydenham Heritage Trust.
8. Further detailed information on the consultation, communication and marketing undertaken for the bus priority project can be found in the document **“Bus Priority Record of Consultation, Communication and Marketing – January 2008”**, which was distributed to all elected members in January 2008.
9. A summary of the issues raised during the consultation phase is shown at **Attachment 2** to this report. The key issues raised were in relation to location of bus lanes; bus stop locations; congestion; cyclist facilities; parking availability; Waimea Terrace Bridge; Dyers Pass roundabout; Sydenham Enhancement Plan; Beckenham Shops; and Thorrington School.
10. As a result of the feedback received during consultation, a concept design is shown at **Attachment 1a, 1b, 1c** to proceed to detailed design, tender and construction. The main bus priority measure used in the preferred option consists of 4.2metres wide shared bus and cycle lanes. The bus lanes in both the inbound and outbound direction will mostly operate as part-time bus lanes, except on the inbound route between Sandyford Street and the Moorhouse Avenue bridge, which is a permanent bus lane.
11. Inbound bus lanes will operate between the hours of 7am to 9am. Outbound bus lanes will operate between the hours of 3pm to 6pm except in school zones, which will operate between the hours of 4pm to 6pm. Outside the stated operating hours, the bus lanes will be utilised as on-street parking spaces, where this is possible.
12. The implementation of bus lanes has been balanced with the loss of parking along the corridor, and to ensure that the bus lanes are successful in achieving the objectives set, enforcement is absolutely essential.
13. An education campaign is proposed in conjunction with the implementation of bus priority measures along the Colombo route, and in particular, to target the various groups who will interact with the bus priority measures (i.e. cyclists, drivers, bus drivers, passengers and pedestrians).

#### FINANCIAL IMPLICATIONS

14. The Colombo Street / City South bus priority route is recommended in the Transport and Greenspace Unit’s capital programme for implementation in the 2008/2009 and 2009/2010 financial years. The estimated cost of this project is \$3,216,500 including fees and contingencies.

#### **Do the Recommendations of this Report Align with 2006-16 LTCCP budgets?**

15. As above.

#### LEGAL CONSIDERATIONS

16. There are 11 listed protected buildings, places and objects in the City Plan and on the Council’s Webmap system, which are located within the project corridor. However, none of these protected buildings are affected by any of the works proposed along the corridor. There are a number of notable trees in properties fronting the Colombo Street bus corridor. Using Webmap it was identified that there are no notable trees which are likely to be affected by the project, i.e. there are no notable trees located within 10 metres of proposed earthworks associated with the project. There are no heritage trees along Colombo Street.

17. No resource consents are required for the works proposed.

**Have you considered the legal implications of the issue under consideration?**

18. There appear to be no legal implications for this project. Council resolutions are required to approve the new traffic and parking restrictions, the removal of bus stops, the relocation of bus stops, as well as the implementation of cycle lanes and bus lanes. The Land Transport Rules provide for the installation of parking restrictions, no stopping restrictions, relocation, removal and implementation of bus stops, cycle lanes and bus lanes.

**ALIGNMENT WITH LTCCP AND ACTIVITY MANAGEMENT PLANS**

19. This project aligns with the Transport and Greenspace Unit's Asset Management Plan, and the Bus Priority Routes Project of the Capital Works Programme, pg 85, Our Community Plan 2006-2016.

**Do the recommendations of this report support a level of service or project in the 2006-16 LTCCP?**

20. As above.

**ALIGNMENT WITH STRATEGIES**

21. This project is consistent with the National Transport Strategy, as well as key regional and local Council strategies including the Regional Land Transport Strategy, Metropolitan Christchurch Transport Statement, Public Passenger Transport Strategy, Pedestrian Strategy, Parking Strategy, Cycling Strategy, Road Safety Strategy, Citywide Public Transport Priority Plan, Metro Strategy 2006-2012, and the Greater Christchurch Urban Development Strategy.

**Do the recommendations align with the Council's strategies?**

22. As above.

**CONSULTATION FULFILMENT**

23. The scheme plans for the first three routes were presented to the relevant Community Boards and Council on the following dates:
- Spreydon/Heathcote Community Board (Colombo Route) – 28 August 2007
  - Fendalton/Waimairi Community Board (Papanui Route) – 4 September 2007
  - Shirley/Papanui Community Board (Papanui Route) – 5 September 2007
  - Burwood/Pegasus & Shirley/Papanui Community Boards (Queenspark Route) – 26 September 2007
  - Council (All three routes) – 2 October 2007
  - Hagley/Ferrymead Community Board (Queenspark Route) – 6 December 2007
24. Community consultation was undertaken on all three routes from 15 October 2007 – 17 December 2007. Approximately 40,000 households along the three routes and side streets (residents and absentee landowners), and other interested groups, were provided with information about the bus priority project and the three routes. Eight hundred and eighty one responses have been received in total (Colombo – 136, Papanui – 253, Queenspark – 163 (*Hills Road Bus Boarders Trial – 247*), Generic – 82).
25. Further detailed information on the consultation, communication and marketing undertaken for the bus priority project can be found in the document "***Bus Priority Record of Consultation, Communication and Marketing – January 2008***", which was distributed to all elected members in January 2008.

## Public Consultation Issues & Responses – Colombo

26. Community consultation was undertaken on the Colombo Route from 15 October 2007 – 17 December 2007. The Colombo route specific consultation brochure was distributed to approximately 1,932 households along the route and side streets (residents and absentee landowners), as well as stakeholders and other interested groups. A total of 9,500 route specific brochures were printed and distributed.
27. There were 136 responses received on the Colombo route, through a variety of media, as follows:
- Emails – 15
  - Feedback forms – 96
  - Have Your Say - 13
  - Letters – 2
  - Phone calls – 10
28. In addition there were four route specific seminars held, as well as three meetings with representatives of the Sydenham businesses and Sydenham Heritage Trust.
29. The majority of respondents (69%) were in support of the proposals.

<b>Support</b>	<b>Number of Responses</b>	<b>% of Total Responses</b>
Support	94	69%
Oppose	29	21%
Not specified	13	10%
<b>Total</b>	<b>136</b>	<b>100%</b>

30. A summary of the issues raised during the consultation phase is shown at **Attachment 2** to this report. The key issues raised were in relation to:
- Location of bus lanes
  - Bus stop locations
  - Congestion
  - Cyclist facilities
  - Parking availability
  - Waimea Terrace Bridge
  - Dyers Pass roundabout
  - Sydenham Enhancement Plan
  - Beckenham Shops
  - Thorrington School

### STAFF RECOMMENDATION

It is recommended that the Council:

- (a) Approve the Colombo Street/City South bus priority route to proceed to detailed design, tender and construction, as shown in the plans for Council approval. (Attachment 1).
- (b) Revoke the existing special vehicle lane operating at any time on Colombo Street on the West side, adjacent to the kerb, commencing at a point 30 metres North of Cass Street and extending in a northerly direction for 86 metres.
- (c) Approve a special vehicle lane, specifically a “bus lane” which restricts the lane for use for buses, bicycles and motorcycles at the following locations:



- (i) Operating between the hours of 3pm and 6pm, Monday to Friday be installed on Colombo Street on the East side, adjacent to the kerb commencing at its intersection with Carlyle Street and extending in a southerly direction for 78 metres.
- (ii) Operating between the hours of 3pm and 6pm, Monday to Friday be installed on Colombo Street on the East side, adjacent to the kerb commencing at a point 3 metres South of Byron Street and extending in a southerly direction for 168 metres.
- (iii) Operating between the hours of 3pm and 6pm, Monday to Friday be installed on Colombo Street on the East side, adjacent to the kerb commencing at a point 3 metres South of Wordsworth Street and extending in a southerly direction for 236 metres.
- (iv) Operating at any time Monday to Friday be installed on Colombo Street on the East side, adjacent to the kerb commencing at a point 6 metres South of Brougham Street and extending in a southerly direction for 236 metres.
- (v) Operating between the hours 3pm and 6pm, Monday to Friday be installed on Colombo Street on the East side, adjacent to the kerb commencing at a point 70 metres South of Huxley Street and extending in a southerly direction for 160 metres.
- (vi) Operating between the hours of 3pm and 6pm, Monday to Friday be installed on Colombo Street on the East side, adjacent to the kerb commencing at a point 120 metres South of Southampton Street and extending in a southerly direction for 345 metres.
- (vii) Operating between the hours of 3pm and 6pm, Monday to Friday be installed on Colombo Street on the East side, adjacent to the kerb commencing at a point 61 metres South of Tennyson Street and extending in a southerly direction for 260 metres.
- (viii) Operating between the hours of 3pm and 6pm, Monday to Friday be installed on Colombo Street on the East side, adjacent to the kerb commencing at a point 38 metres South of Waimea Terrace and extending in a southerly direction for 401 metres.
- (ix) Operating between the hours of 4pm and 6pm, Monday to Friday be installed on Colombo Street on the East side, adjacent to the kerb on commencing at a point 6 metres South of Malcolm Avenue and extending in a southerly direction for 180 metres.
- (x) Operating between the hours of 7am and 9am, Monday to Friday be installed on Cashmere Road on the North side, adjacent to the kerb commencing at a point 36 metres East of Thornington Road and extending in an easterly direction for 154 metres.
- (xi) Operating between the hours of 7am and 9am Monday to Friday be installed on Colombo Street on the West side, adjacent to the kerb commencing at a point 3 metres North of Thornington Road and extending in a northerly direction for 272 metres.
- (xii) Operating between the hours of 7am and 9am, Monday to Friday be installed on Colombo Street on the West side, adjacent to the kerb commencing at a point 27 metres North of Ashgrove Terrace and extending in a northerly direction for 205 metres.
- (xiii) Operating between the hours of 7am and 9am, Monday to Friday be installed on Colombo Street on the West side, commencing at a point 78 metres North of Strickland Street and extending in a northerly direction for 290 metres.
- (xiv) Operating between the hours of 7am and 9am, Monday to Friday be installed on Colombo Street on the West side, commencing at a point 3 metres North of Beaumont Street and extending in a northerly direction for 169 metres.
- (xv) Operating at any time Monday to Friday be installed on Colombo Street on the West side, commencing at a point 8 metres North of Faraday Street and extending in a northerly direction for 205 metres.

- (xvi) Operating at any time Monday to Friday be installed on Colombo Street on the West side, commencing at a point 8 metres North of Brougham Street and extending in a northerly direction for 35 metres.
  - (xvii) Operating between the hours of 7am and 9am, Monday to Friday be installed on Colombo Street on the West side, commencing at a point 3 metres North of Sandyford Street and extending in a northerly direction for 202 metres.
- (d) Approve the following bus stops:
- (i) That the existing bus stop be revoked from the East side of Colombo Street commencing 33 metres North of the intersection with Walton Street and extending 25 metres in a southerly direction.
  - (ii) That the existing bus stop be revoked from the East side of Colombo Street commencing 16 metres South of its intersection with Waverly Street and extending 62 metres in a southerly direction.
  - (iii) That the existing bus stop be revoked from the East side of Colombo Street commencing 58 metres South of its intersection with South Christchurch Library (Tuscany Place) and extending 28 metres in a southerly direction.
  - (iv) That the existing bus stop be revoked from the East side of Colombo Street commencing 12 metres North of its intersection with Remuera Avenue and extending 19 metres in a northerly direction.
  - (v) That the existing bus stop be revoked from the West side of Colombo Street commencing 37 metres North of its intersection with Nutfield Lane and extending 26 metres in a northerly direction
  - (vi) That the existing bus stop be revoked from the West side of Colombo Street commencing 66 metres North of its intersection with Ashgrove Terrace and extending 26 metres in a northerly direction.
  - (vii) That the existing bus stop be revoked from the West side of Colombo Street commencing 10 metres South of its intersection with Thornington Road and extending 17 metres in a northerly direction.
  - (viii) That a bus stop be installed on the East side of Colombo Street commencing 17 metres South of its intersection with Wordsworth Street and extending 25 metres in a southerly direction.
  - (ix) That a bus stop be installed on the East side of Colombo Street commencing 5 metres South of its intersection with Hutcheson Street and extending 18 metres in a southerly direction.
  - (x) That a bus stop be installed on the East side of Colombo Street commencing 113 metres South of its intersection with Malcolm Avenue and extending 20 metres in a southerly direction.
  - (xi) That a bus stop be installed on the East side of Colombo Street commencing 24 metres South of its intersection with Waimea Terrace and extending 15 metres in a southerly direction.
  - (xii) That a bus stop be installed on the West side of Colombo Street commencing 7 metres South of its intersection with Ernlea Terrace and extending 15 metres in a southerly direction.

- (xiii) That a bus stop be installed on the West side of Colombo Street commencing 12 metres North of its intersection with Thorrington Road and extending 15 metres in a northerly direction.
- (e) Approve a special vehicle lane, specifically a “cycle lane” which restricts the lane for use for bicycles in the following locations:
- (i) That all cycle lanes be revoked on Colombo Street on the East side commencing at its intersection with Carlyle Street and extending in a southerly direction to its intersection with Remuera Avenue.
  - (ii) That a ‘cycle lane’ be installed on Colombo Street on the East side, adjacent to the kerb commencing at a point 5 metres North of its intersection with Lawson Street and extending in a southerly direction for a distance of 17 metres.
  - (iii) That a ‘cycle lane’ be installed on Colombo Street on the East side, adjacent to the kerb commencing at a point 8 metres North of its intersection with Wordsworth Street and extending in a southerly direction for a distance of 3 metres.
  - (iv) That a ‘cycle lane’ be installed on Colombo Street on the East side, adjacent to the kerb commencing at a point 10 metres North of its intersection with Brougham Street and extending in a southerly direction for a distance of 3 metres.
  - (v) That a ‘cycle lane’ be installed on Colombo Street on the East side, adjacent to the kerb commencing at a point 21 metres South of its intersection with Hastings Street West and extending in a southerly direction for a distance of 3 metres.
  - (vi) That a ‘cycle lane’ be installed on Colombo Street on the East side, adjacent to the right hand side of the left turn lane into Huxley Street commencing at a point 36 metres North of its intersection with Huxley Street and extending in a southerly direction for a distance of 32 metres.
  - (vii) That a ‘cycle lane’ be installed on Colombo Street on the East side, adjacent to the right hand side of the parking lane commencing at a point 8 metres South of its intersection with Huxley Street and extending in a southerly direction for a distance of 63 metres.
  - (viii) That a ‘cycle lane’ be installed on Colombo Street on the East side, adjacent to the kerb commencing at a point 32 metres South of its intersection with Southampton Street and extending in a southerly direction for a distance of 42 metres.
  - (ix) That a ‘cycle lane’ be installed on Colombo Street on the East side, adjacent to the kerb commencing at a point 105 metres North of its intersection with Roxburgh Street and extending in a southerly direction for a distance of 21 metres.
  - (x) That a ‘cycle lane’ be installed on Colombo Street on the East side, adjacent to the kerb commencing at a point 162 metres South of its intersection with Southey Street and extending in a southerly direction for a distance of 64 metres.
  - (xi) That a ‘cycle lane’ be installed on Colombo Street on the East side, adjacent to the right hand side of the parking lane commencing at a point 75 metres North of its intersection with Tennyson Street and extending in a southerly direction for a distance of 71 metres.
  - (xii) That a ‘cycle lane’ be installed on Colombo Street on the East side, adjacent to the right hand side of the parking lane commencing at a point 7 metres South of its intersection with Tennyson Street and extending in a southerly direction for a distance of 55 metres.
  - (xiii) That a ‘cycle lane’ be installed on Colombo Street on the East side, adjacent to the kerb commencing at a point 18 metres North of its intersection with Fisher Avenue and extending in a southerly direction for a distance of 3 metres.

- (xiv) That a 'cycle lane' be installed on Colombo Street on the East side, adjacent to the kerb commencing at a point 14 metres North of its intersection with Waimea Terrace and extending in a southerly direction for a distance of 45 metres.
- (xv) That a 'cycle lane' be installed on Colombo Street on the East side, adjacent to the right hand side of the bus stop commencing at a point 25 metres South of its intersection with Waimea Terrace and extending in a southerly direction for a distance of 16 metres.
- (xvi) That a 'cycle lane' be installed on Colombo Street on the East side, adjacent to the kerb commencing at a point 131 metres South of its intersection with Malcolm Avenue and extending in a southerly direction for a distance of 3 metres.
- (xvii) That all cycle lanes be revoked on Colombo Street on the West side commencing at its intersection with Thorrington Road and extending in a northerly direction to its intersection with Cass Street.
- (xviii) That a 'cycle lane' be installed on Colombo Street on the West side, adjacent to the kerb commencing at a point 7 metres South of its intersection with Ernlea Terrace and extending in a northerly direction for a distance of 90 metres.
- (xix) That a 'cycle lane' be installed on Colombo Street on the West side, adjacent to the kerb commencing at a point 140 metres North of its intersection with Ashgrove Terrace and extending in a northerly direction for a distance of 3 metres.
- (xx) That a 'cycle lane' be installed on Colombo Street on the West side, adjacent to the kerb commencing at a point 85 metres North of its intersection with Aylmer Street and extending in a northerly direction for a distance of 82 metres.
- (xxi) That a 'cycle lane' be installed on Colombo Street on the West side, adjacent to the right hand side of the parking lane commencing at a point 74 metres South of its intersection with Strickland Street and extending in a northerly direction for a distance of 70 metres.
- (xxii) That a 'cycle lane' be installed on Colombo Street on the West side, adjacent to the right hand side of the parking lane commencing at a point 3 metres North of its intersection with Strickland Street and extending in a northerly direction for a distance of 76 metres.
- (xxiii) That a 'cycle lane' be installed on Colombo Street on the West side, adjacent to the right hand side of the bus stop commencing at a point 6 metres North of its intersection with Devon Street and extending in a northerly direction for a distance of 18 metres.
- (xxiv) That a 'cycle lane' be installed on Colombo Street on the West side, adjacent to the kerb commencing at a point 10 metres South of its intersection with Beaumont Street and extending in a northerly direction for a distance of 2 metres.
- (xxv) That a 'cycle lane' be installed on Colombo Street on the West side, adjacent to the kerb commencing at a point 47 metres North of its intersection with Angus Street and extending in a northerly direction for a distance of 97 metres.
- (xxvi) That a 'cycle lane' be installed on Colombo Street on the West side, adjacent to the kerb commencing at a point 4 metres North of its intersection with Milton Street and extending in a northerly direction for a distance of 32 metres.
- (xxvii) That a 'cycle lane' be installed on Colombo Street on the West side, adjacent to the kerb commencing at a point 141 metres North of its intersection with Milton Street and extending in a northerly direction for a distance of 3 metres.
- (xxviii) That a 'cycle lane' be installed on Colombo Street on the West side, adjacent to the kerb commencing at a point 10 metres South of its intersection with Brougham Street and extending in a northerly direction for a distance of 3 metres.

- (xxix) That a 'cycle lane' be installed on Colombo Street on the West side, adjacent to the right hand side of the parking lane commencing at a point 5 metres North of its intersection with Stanley Street and extending in a northerly direction for a distance of 184 metres.
  - (xxx) That a 'cycle lane' be installed on Colombo Street on the West side, adjacent to the kerb commencing at a point 7 metres South of its intersection with Wordsworth Street and extending in a northerly direction for a distance of 3 metres.
  - (xxxii) That a 'cycle lane' be installed on Colombo Street on the West side, adjacent to the right hand side of the parking lane commencing at a point 10 metres North of its intersection with Wordsworth Street and extending in a northerly direction for a distance of 183 metres.
  - (xxxiii) That a 'cycle lane' be installed on Colombo Street on the West side, adjacent to the kerb commencing at a point 9 metres South of its intersection with Sandyford Street and extending in a northerly direction for a distance of 3 metres.
- (f) Approve the following no stopping restrictions:
- (i) That all no stopping restrictions be revoked on Colombo Street on the East side commencing at its intersection with Carlyle Street and extending in a southerly direction to its intersection with Remuera Avenue.
  - (ii) That the stopping of vehicles be prohibited at any time on Colombo Street on the East side commencing at its intersection with Carlyle Street and extending 7 metres in a southerly direction.
  - (iii) That the stopping of vehicles be prohibited from 3pm to 6pm, Monday to Friday on the East side of Colombo Street, commencing at a point 7 metres South of its intersection with Carlyle Street and extending 71 metres in a southerly direction.
  - (iv) That the stopping of vehicles be prohibited at any time on Colombo Street on the East side commencing at a point 40 metres North of its intersection with Byron Street and extending 31 metres in a southerly direction.
  - (v) That the stopping of vehicles be prohibited at any time on Colombo Street on the East side commencing at its intersection with Byron Street and extending 11 metres in a southerly direction.
  - (vi) That the stopping of vehicles be prohibited from 3pm to 6pm, Monday to Friday on Colombo Street on the East side commencing at a point 11 metres South of its intersection with Byron Street and extending 79 metres in a southerly direction.
  - (vii) That the stopping of vehicles be prohibited at any time on Colombo Street on the East side commencing at a point 90 metres South of its intersection with Byron Street and extending 11 metres in a southerly direction.
  - (viii) That the stopping of vehicles be prohibited at any time on Colombo Street on the East side commencing at a point 78 metres North of its intersection with Lawson Street and extending 11 metres in a southerly direction.
  - (ix) That the stopping of vehicles be prohibited from 3pm to 6pm, Monday to Friday on Colombo Street on the East side commencing at a point 67 metres North of its intersection with Lawson Street and extending 56 metres in a southerly direction.
  - (x) That the stopping of vehicles be prohibited at any time on Colombo Street on the East side commencing at its intersection with Lawson Street and extending 11 metres in a northerly direction.

- (xi) That the stopping of vehicles be prohibited at any time on Colombo Street on the East side commencing at its intersection with Lawson Street and extending 38 metres in a southerly direction.
- (xii) That the stopping of vehicles be prohibited at any time be installed on Colombo Street on the East side commencing at its intersection with Wordsworth Street and extending 11 metres in a southerly direction.
- (xiii) That the stopping of vehicles be prohibited from 3pm to 6pm, Monday to Friday on Colombo Street on the East side, commencing at a point 42 metres South of its intersection with Wordsworth Street and extending 88 metres in a southerly direction.
- (xiv) That the stopping of vehicles be prohibited at any time on Colombo Street on the East side commencing at a point 130 metres South of its intersection with Wordsworth Street and extending 50 metres in a southerly direction.
- (xv) That the stopping of vehicles be prohibited from 3pm to 6pm, Monday to Friday on Colombo Street on the East side commencing at a point 6 metres South of its intersection with Waverly Street and extending 54 metres in a southerly direction.
- (xvi) That the stopping of vehicles be prohibited at any time on Colombo Street on the East side commencing at its intersection with Brougham Street and extending 50 metres in a northerly direction.
- (xvii) That the stopping of vehicles be prohibited at any time on Colombo Street on the East side commencing at a point 4 metres South of its intersection with Brougham Street and extending 36 metres in a southerly direction.
- (xviii) That the stopping of vehicles be prohibited at any time Monday to Friday on Colombo Street on the East side commencing at a point 23 metres South of its intersection with Hutcheson Street and extending 50 metres in a southerly direction.
- (xix) That the stopping of vehicles be prohibited at any time on Colombo Street on the East side commencing at its intersection with Hastings Street West and extending 12 metres in a northerly direction.
- (xx) That the stopping of vehicles be prohibited at any time on Colombo Street on the East side commencing at its intersection with Hastings Street West and extending 21 metres in a southerly direction.
- (xxi) That the stopping of vehicles be prohibited at any time on Colombo Street on the East side commencing at its intersection with Walton Street and extending 50 metres in a northerly direction.
- (xxii) That the stopping of vehicles be prohibited at any time on Colombo Street on the East side commencing at its intersection with Walton Street and extending 82 metres in a southerly direction.
- (xxiii) That the stopping of vehicles be prohibited at any time on Colombo Street on the East side commencing at its intersection with Huxley Street and extending 10 metres in a southerly direction.
- (xxiv) That the stopping of vehicles be prohibited at any time on Colombo Street on the East side commencing at its intersection with King Street and extending 36 metres in a northerly direction.
- (xxv) That the stopping of vehicles be prohibited at any time on Colombo Street on the East side commencing at its intersection with King Street and extending 34 metres in a southerly direction.

- (xxvi) That the stopping of vehicles be prohibited from 3pm to 6pm Monday to Friday on Colombo Street on the East side commencing at a point 34 metres South of its intersection with King Street and extending 19 metres in a southerly direction.
- (xxvii) That the stopping of vehicles be prohibited at any time on Colombo Street on the East side commencing at its intersection with Southampton Street and extending 18 metres in a northerly direction.
- (xxviii) That the stopping of vehicles be prohibited at any time on Colombo Street on the East side commencing at its intersection with Southampton Street and extending 15 metres in a southerly direction.
- (xxix) That the stopping of vehicles be prohibited at any time on Colombo Street on the East side commencing at a point 31 metres South of its intersection with Southampton Street and extending 89 metres in a southerly direction.
- (xxx) That the stopping of vehicles be prohibited from 3pm to 6pm Monday to Friday on Colombo Street on the East side commencing at a point 120 metres South of its intersection with Southampton Street and extending 70 metres in a southerly direction.
- (xxxi) That the stopping of vehicles be prohibited at any time on Colombo Street on the East side commencing at its intersection with Roxburgh Street and extending 13 metres in a northerly direction.
- (xxxii) That the stopping of vehicles be prohibited at any time on Colombo Street on the East side commencing at its intersection with Roxburgh Street and extending 11 metres in a southerly direction.
- (xxxiii) That the stopping of vehicles be prohibited from 3pm to 6pm Monday to Friday on Colombo Street on the East side commencing at a point 25 metres South of its intersection with Roxburgh Street and extending 24 metres in a southerly direction.
- (xxxiv) That the stopping of vehicles be prohibited at any time on Colombo Street on the East side commencing at its intersection with Southey Street and extending 41 metres in a northerly direction.
- (xxxv) That the stopping of vehicles be prohibited at any time on Colombo Street on the East side commencing at its intersection with Southey Street and extending 15 metres in a southerly direction.
- (xxxvi) That the stopping of vehicles be prohibited from 3pm to 6pm Monday to Friday on Colombo Street on the East side commencing at a point 6 metres South of its intersection with Southey Street and extending 125 metres in a southerly direction.
- (xxxvii) That the stopping of vehicles be prohibited at any time (inside the cycle lane) on Colombo Street on the East side commencing at a point 100 metres North of its intersection with Tennyson Street and extending 53 metres in a northerly direction.
- (xxxviii) That the stopping of vehicles be prohibited at any time (inside the cycle lane) on Colombo Street on the East side commencing at a point 79 metres North of its intersection with Tennyson Street and extending 9 metres in a northerly direction.
- (xxix) That the stopping of vehicles be prohibited at any time on Colombo Street on the East side commencing at a point 6 metres North of its intersection with Tennyson Street and extending 20 metres in a northerly direction.
- (xl) That the stopping of vehicles be prohibited from 3pm to 6pm Monday to Friday on Colombo Street on the East side commencing at a point 80 metres South of its intersection with Tennyson Street and extending 93 metres in a southerly direction.

- (xli) That the stopping of vehicles be prohibited at any time on Colombo Street on the East side commencing at its intersection with Fisher Avenue and extending 15 metres in a northerly direction.
- (xlii) That the stopping of vehicles be prohibited at any time on Colombo Street on the East side commencing at its intersection with Fisher Avenue and extending 10 metres in a southerly direction.
- (xlili) That the stopping of vehicles be prohibited from 3pm to 6pm Monday to Friday on Colombo Street on the East side commencing at a point 10 metres South of its intersection with Fisher Avenue and extending 63 metres in a southerly direction.
- (xliv) That the stopping of vehicles be prohibited at any time on Colombo Street on the East side commencing at its intersection with Waimea Terrace and extending 39 metres in a northerly direction.
- (xlv) That the stopping of vehicles be prohibited at any time on Colombo Street on the East side commencing at its intersection with Waimea Terrace and extending 17 metres in a southerly direction.
- (xlvi) That the stopping of vehicles be prohibited at any time on Colombo Street on the East side commencing at a point 38 metres South of its intersection with Waimea Terrace and extending 29 metres in a southerly direction.
- (xlvii) That the stopping of vehicles be prohibited at any time on Colombo Street on the East side commencing at its intersection with Hunter Terrace and extending 12 metres in a southerly direction.
- (xlviii) That the stopping of vehicles be prohibited from 3pm to 6pm Monday to Friday on Colombo Street on the East side commencing at a point 12 metres South of its intersection with Hunter Terrace and extending 156 metres in a southerly direction.
- (xlix) That the stopping of vehicles be prohibited at any time on Colombo Street on the East side commencing at a point 177 metres North of its intersection with Malcolm Avenue and extending 40 metres in a northerly direction.
- (l) That the stopping of vehicles be prohibited from 3pm to 6pm Monday to Friday on Colombo Street on the East side commencing at a point 25 metres North of its intersection with Malcolm Avenue and extending 152 metres in a northerly direction.
- (li) That the stopping of vehicles be prohibited at any time on Colombo Street on the East side commencing at its intersection with Malcolm Avenue and extending 25 metres in a northerly direction.
- (lii) That the stopping of vehicles be prohibited at any time on Colombo Street on the East side commencing at its intersection with Malcolm Avenue and extending 15 metres in a southerly direction.
- (liii) That the stopping of vehicles be prohibited from 4pm to 6pm Monday to Friday on Colombo Street on the East side commencing at a point 15 metres South of its intersection with Malcolm Avenue and extending 98 metres in a southerly direction.
- (liv) That the stopping of vehicles be prohibited from 4pm to 6pm Monday to Friday on Colombo Street on the East side commencing at a point 18 metres North of its intersection with Remuera Avenue and extending 45 metres in a northerly direction.
- (lv) That the stopping of vehicles be prohibited at any time on Colombo Street on the East side commencing at its intersection with Remuera Avenue and extending 18 metres in a northerly direction.



- (lvi) That the stopping of vehicles be prohibited from 7am to 9am Monday to Friday on Cashmere Road on the North side commencing at a point 36 metres East of its intersection with Thorrington Road and extending 154 metres in an easterly direction.
- (lvii) That all no stopping be revoked on Colombo Street on the West side commencing at its intersection with Woodbridge Road and extending in a northerly direction to its intersection with Moorhouse Avenue.
- (lviii) That the stopping of vehicles be prohibited at any time (inside the cycle lane) on Colombo Street on the West side commencing at its intersection with Wherstead Road and extending 9 metres in a southerly direction.
- (lix) That the stopping of vehicles be prohibited at any time (inside the cycle lane) on Colombo Street on the West side commencing at its intersection with Wherstead Road and extending 130 metres in a northerly direction.
- (lx) That the stopping of vehicles be prohibited at any time on Colombo Street on the West side commencing at its intersection with Thorrington Road and extending 10 metres in a southerly direction.
- (lxi) That the stopping of vehicles be prohibited at any time on Colombo Street on the West side commencing at its intersection with Thorrington Road and extending 12 metres in a northerly direction.
- (lxii) That the stopping of vehicles be prohibited from 7am to 9am Monday to Friday on Colombo Street on the West side commencing at a point 27 metres North of its intersection with Thorrington Road and extending 99 metres in a northerly direction.
- (lxiii) That the stopping of vehicles be prohibited at any time on Colombo Street on the West side commencing at its intersection with Nutfield Lane and extending 15 metres in a southerly direction.
- (lxiv) That the stopping of vehicles be prohibited at any time on Colombo Street on the West side commencing at its intersection with Nutfield Lane and extending 16 metres in a northerly direction.
- (lxv) That the stopping of vehicles be prohibited from 7am to 9am Monday to Friday on Colombo Street on the West side commencing at a point 16 metres North of its intersection with Nutfield Lane and extending 99 metres in a northerly direction.
- (lxvi) That the stopping of vehicles be prohibited at any time on Colombo Street on the West side commencing at its intersection with Ermla Terrace and extending 7 metres in a southerly direction.
- (lxvii) That the stopping of vehicles be prohibited from 7am to 9am Monday to Friday on Colombo Street on the West side commencing at a point 37 metres South of its intersection with Aylmer Street and extending 99 metres in a southerly direction.
- (lxviii) That the stopping of vehicles be prohibited at any time on Colombo Street on the West side commencing at its intersection with Aylmer Street and extending 37 metres in a southerly direction.
- (lxix) That the stopping of vehicles be prohibited at any time on Colombo Street on the West side commencing at its intersection with Aylmer Street and extending 12 metres in a northerly direction.
- (lxx) That the stopping of vehicles be prohibited from 7am to 9am Monday to Friday on Colombo Street on the West side commencing at a point 12 metres North of its intersection with Aylmer Street and extending 46 metres in a northerly direction.

- (lxxi) That the stopping of vehicles be prohibited at any time on Colombo Street on the West side commencing at a point 70 metres South of its intersection with Strickland Street and extending 45 metres in a southerly direction.
- (lxxii) That the stopping of vehicles be prohibited at any time on Colombo Street on the West side commencing at a point 6 metres South of its intersection with Strickland Street and extending 23 metres in a southerly direction.
- (lxxiii) That the stopping of vehicles be prohibited from 7am to 9am Monday to Friday on Colombo Street on the West side commencing at a point 15 metres South of its intersection with Boon Street and extending 166 metres in a southerly direction.
- (lxxiv) That the stopping of vehicles be prohibited at any time on Colombo Street on the West side commencing at its intersection with Boon Street and extending 15 metres in a southerly direction.
- (lxxv) That the stopping of vehicles be prohibited at any time on Colombo Street on the West side commencing at its intersection with Boon Street and extending 13 metres in a northerly direction.
- (lxxvi) That the stopping of vehicles be prohibited from 7am to 9am Monday to Friday on Colombo Street on the West side commencing at a point 13 metres North of its intersection with Boon Street and extending 55 metres in a northerly direction.
- (lxxvii) That the stopping of vehicles be prohibited at any time on Colombo Street on the West side commencing at its intersection with Devon Street and extending 17 metres in a southerly direction.
- (lxxviii) That the stopping of vehicles be prohibited at any time on Colombo Street on the West side commencing at its intersection with Beaumont Street and extending 35 metres in a southerly direction.
- (lxxix) That the stopping of vehicles be prohibited at any time on Colombo Street on the West side commencing at a point 3 metres North of its intersection with Beaumont Street and extending 5 metres in a northerly direction.
- (lxxx) That the stopping of vehicles be prohibited from 7am to 9am Monday to Friday on Colombo Street on the West side commencing at a point 19 metres South of its intersection with Angus Street and extending 90 metres in a southerly direction.
- (lxxxii) That the stopping of vehicles be prohibited at any time on Colombo Street on the West side commencing at its intersection with Angus Street and extending 19 metres in a southerly direction.
- (lxxxiii) That the stopping of vehicles be prohibited from 7am to 9am Monday to Friday on Colombo Street on the West side commencing at a point 9 metres North of its intersection with Angus Street and extending 22 metres in a northerly direction.
- (lxxxiv) That the stopping of vehicles be prohibited at any time on Colombo Street on the West side commencing at its intersection with Milton Street and extending to its intersection with Brougham Street in a southerly direction.
- (lxxxv) That the stopping of vehicles be prohibited at any time on Colombo Street on the West side commencing at its intersection with Stanley Street and extending 45 metres in a southerly direction.

- (lxxxv) That the stopping of vehicles be prohibited at any time on Colombo Street on the West side commencing at its intersection with Elgin Street and extending 27 metres in a southerly direction.
  - (lxxxvi) That the stopping of vehicles be prohibited at any time on Colombo Street on the West side commencing at a point 5 metres South of its intersection with Wordsworth Street and extending 34 metres in a southerly direction.
  - (lxxxvii) That the stopping of vehicles be prohibited at any time (inside the cycle lane) on Colombo Street on the West side commencing at its intersection with Battersea Street and extending 14 metres in a southerly direction.
  - (lxxxviii) That the stopping of vehicles be prohibited at any time (inside the cycle lane) on Colombo Street on the West side commencing at its intersection with Battersea Street and extending 13 metres in a northerly direction.
  - (lxxxix) That the stopping of vehicles be prohibited at any time on Colombo Street on the West side commencing at its intersection with Sandyford Street and extending 20 metres in a northerly direction.
  - (xc) That the stopping of vehicles be prohibited at any time on Colombo Street on the West side commencing at its intersection with Cass Street and extending to its intersection with Moorhouse Avenue in a northerly direction.
- (g) Approve the following pedestrian crossings:
- (i) That pursuant to the Local Government Act 1974 and the Land Transport Rule – Traffic Control Devices 2004, Rule 54002, Section 8 the Council resolves to remove the zebra pedestrian crossing on Colombo Street, 6 metres North of Battersea Street.
  - (ii) That pursuant to the Local Government Act 1974 and the Land Transport Rule – Traffic Control Devices 2004, Rule 54002, Section 8 the Council resolves to remove the zebra pedestrian crossing on Colombo Street, 20 metres southwest of Wherstead Road.
  - (iii) That pursuant to the Local Government Act 1974 and the Land Transport Rule – Traffic Control Devices 2004, Rule 54002, Section 6 the Council resolves to install a mid-block signalised pedestrian crossing which controls all road users including special classes of vehicle (as specified in Traffic Control Device Rule, Section 6.4) on Colombo Street, 6 metres North of Battersea Street.
  - (iv) That pursuant to the Local Government Act 1974 and the Land Transport Rule – Traffic Control Devices 2004, Rule 54002, Section 6 the Council resolves to install a mid-block signalised pedestrian crossing which controls all road users including special classes of vehicle (as specified in Traffic Control Device Rule, Section 6.4) on Colombo Street, 25 metres South of Hastings Street West.
  - (v) That pursuant to the Local Government Act 1974 and the Land Transport Rule – Traffic Control Devices 2004, Rule 54002, Section 6 the Council resolves to install a mid-block signalised pedestrian crossing which controls all road users including special classes of vehicle (as specified in Traffic Control Device Rule, Section 6.4) on Colombo Street, 20 metres southwest of Wherstead Road.
- (h) Approve the investigation of and integration of the proposed parking restrictions raised during the consultation phase, with the Sydenham Parking Strategy developed for the side streets adjoining this project.

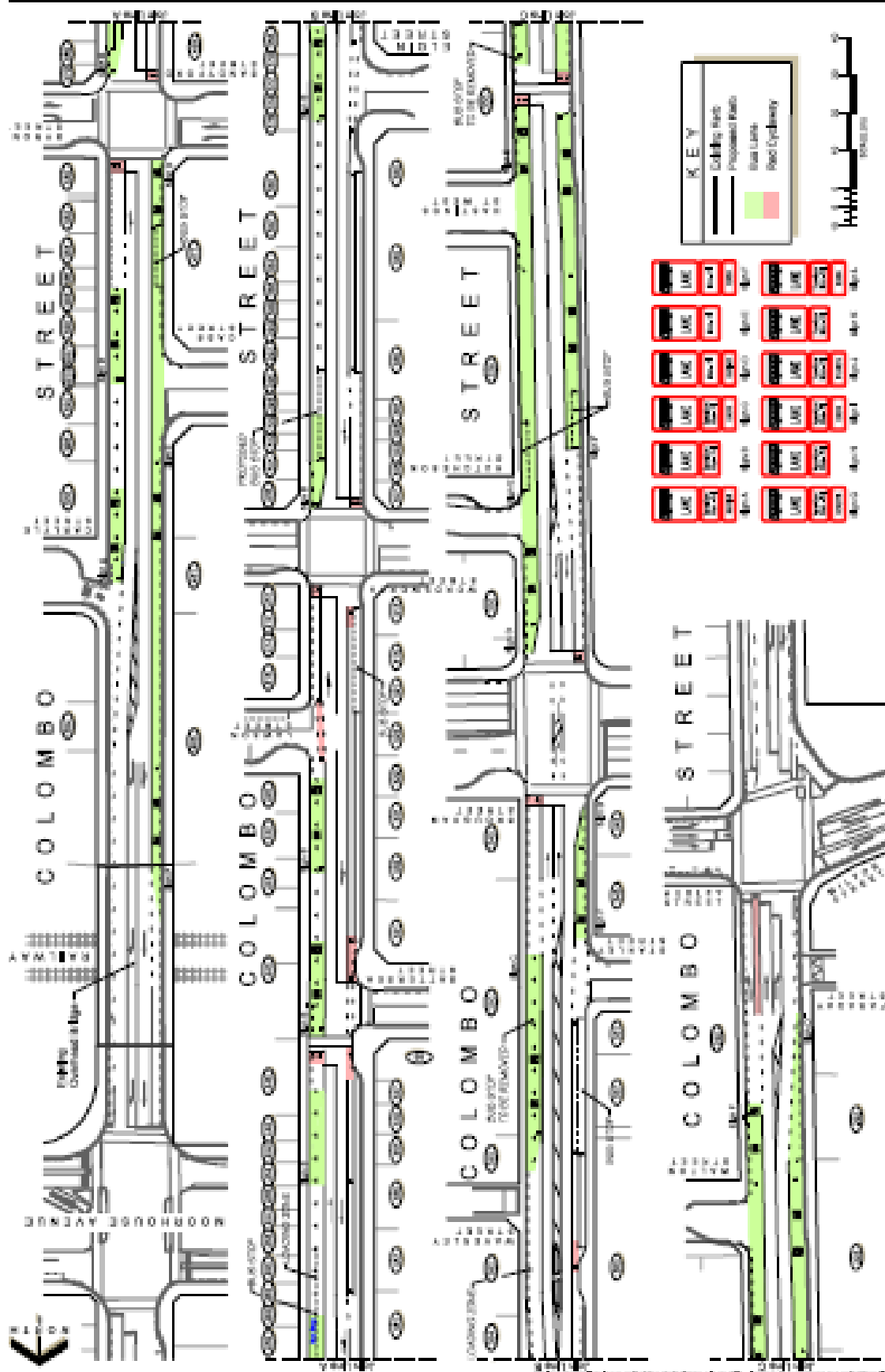
**SPREYDON/HEATHCOTE COMMUNITY BOARD CONSIDERATION**

The Spreydon/Heathcote Community Board considered this report at its meeting held on Tuesday 15 April 2008. It heard a deputation from one business owner in Colombo Street and two bicycle rider users of Colombo Street. Details of these deputations are recorded in Part B Clause 2.

**BOARD RECOMMENDATION**

That the Council adopt the staff recommendation subject to:

- (a) An investigation into a solution regarding parking arrangements between 7.30am and 9.00am and the possibility of incorporating a combined parking bay /pedestrian way outside the businesses situated at numbers 245-247 Colombo Street. The report to be provided by 9 May 2008.

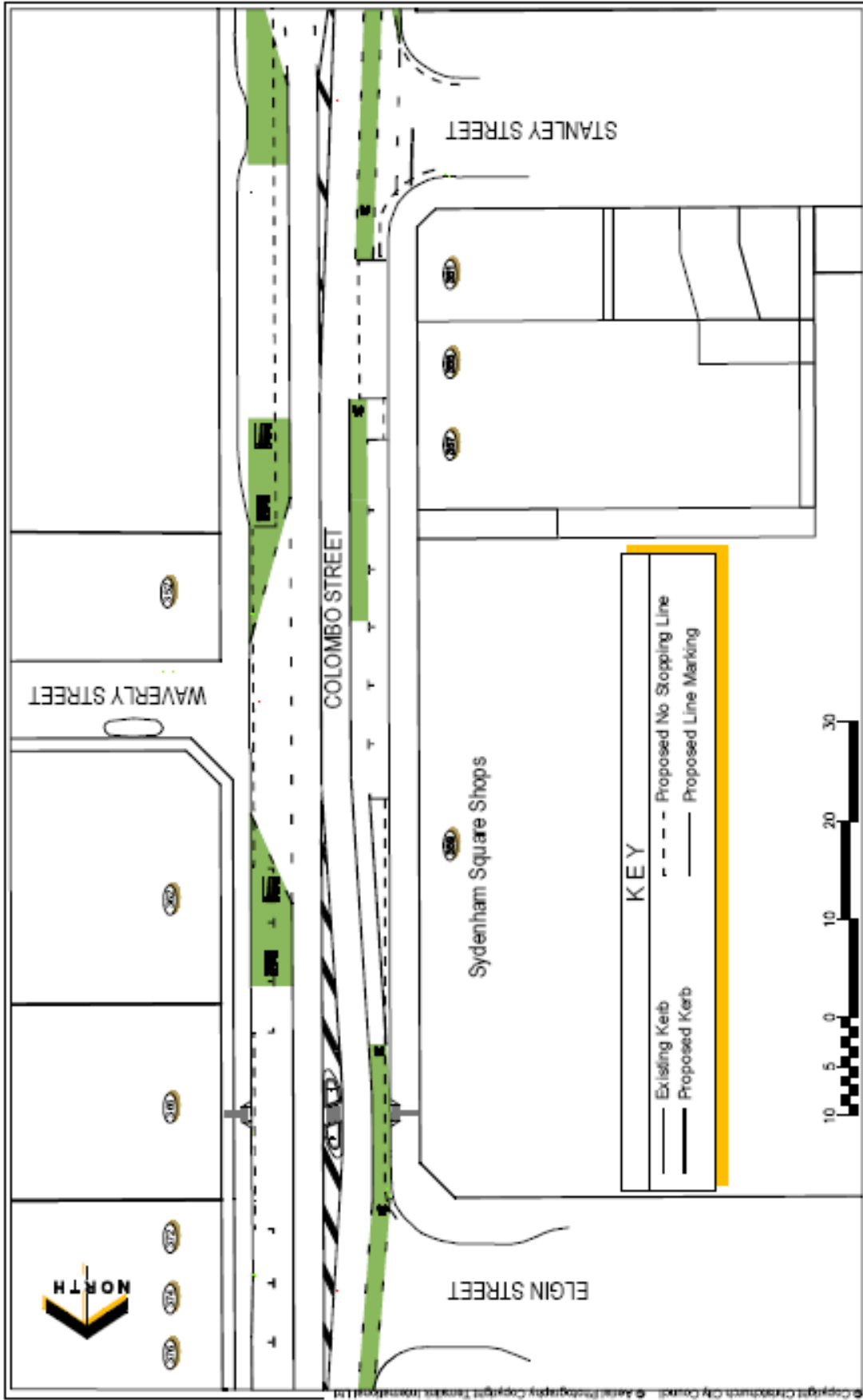


Original Plan Size: A3  
 PRINTED: 1/2018  
 PROJECT: 15210000

Option C

COLOMBO STREET - (Moorhouse Ave - Milton Street)  
 Safety Improvements  
 For Council Approval





Original Plan Size: A4  
 ISSUE 1 22/04/10  
 TP316417 AF

**COLOMBO STREET**  
 Proposed Parking Changes on Colombo Street  
 Colombo Street Bus Priority



Copyright Christchurch City Council. All Rights Reserved. © Aerial Photography Copyright Terrestrial Investments Ltd