

10. 12. 2009

**BURWOOD/PEGASUS COMMUNITY BOARD
16 NOVEMBER 2009**

**Report of a meeting of the Burwood/Pegasus Community Board
held on Monday 16 November 2009 at 5pm in the Board Room,
corner Beresford and Union Streets, New Brighton.**

- PRESENT:** David East (Chairman), Tina Lomax, Tim Sintes, Gail Sheriff and Linda Stewart.
- APOLOGIES:** Apologies for absence were received and accepted from Nigel Dixon and Chrissie Williams.

The Board reports that:

PART A – ITEMS REQUIRING A COUNCIL DECISION

1. QUEENSPARK BUS PRIORITY PROJECT – NEW SIGNALISED CROSSING



General Manager responsible:	General Manager City Environment, DDI 941-8608
Officer responsible:	Transport and Greenspace Unit Manager
Authors:	Patrick Cantillon, Project Manager and Mike Thomson, Senior Traffic Engineer

PURPOSE OF REPORT

1. The purpose of this report is to seek the Council's approval to install a new signalised pedestrian crossing and associated parking restrictions on New Brighton Road outside Burwood School, as part of the Queenspark Bus Priority Project, as shown in the plan for Council approval at **attachment 1**.
2. This report also seeks the Council's approval to revoke a short section of special vehicle lane, namely a "bus lane" from New Brighton Road, as part of the Queenspark Bus Priority Project, as shown in the plan for Council approval at **attachment 2**.

EXECUTIVE SUMMARY

3. The Queenspark Bus Priority project was approved to proceed to detailed design, tender and construction by the Council at its meeting on 12 June 2008. During the detailed design phase, the project team noted that the existing kea crossing outside Burwood School would be unsafe during the operation of the outbound bus lane between Lake Terrace Road and Bassett Street.
4. Burwood School fronts on to both Lake Terrace Road and New Brighton Road. A school speed zone currently operates in the morning and afternoon peak when traffic must slow to 40 kilometres per hour, as well as a kea crossing.
5. A recent study of school drop off/pick up parking facilities has concluded that a P3 (maximum parking for three minutes) at school arrival and departure times, is the most successful time restriction to discourage parents/caregivers from leaving their car parked outside the school for long periods. Turnover of vehicles optimises the drop off/pick up activity which benefits all parents/caregivers, as well as reducing parking congestion right at the school gate. The school principal agrees with the change from a P5 loading zone to a P3.
6. The project team investigated the installation of a signalised pedestrian crossing as a safe alternative to the kea crossing and discussed this option with Burwood School. The school principal was very supportive of the signalised crossing option and agreed with the removal of the school speed zone with the installation of the signalised crossing. The principal has advised the School Board of Trustees, who are supportive of the proposal.

Burwood/Pegasus Community Board 16.11.2009

1 Cont'd

7. The reasons for the removal of the 40 kilometres per hour school zone are as follows:
- (a) The retention of a school zone with the installation of a signalised crossing is not considered appropriate because:
- Motorists stopped at the signalised crossing may not realise that when they are leaving the signalised crossing they are still subject to a maximum speed of 40 kilometres per hour.
 - Any person/child on the roadway may believe that traffic will only be doing 40 kilometres per hour, when they may actually be going faster.
 - Slower speeds generally reduce the gaps in the traffic, which potentially affects the efficient operation of the signals (i.e. the signals may remain green longer than necessary for the traffic, which unnecessarily delays the pedestrians).
 - The signals will provide a far greater degree of safety for the school children, as traffic will be required to stop for them rather than just slowing down.
8. The revocation of the section of bus lane commencing at the intersection of Golf Links Road and continuing for 38 metres along New Brighton Road is required for safety reasons. Golf Links Road has a free left turn movement at any time onto New Brighton Road. A bus travelling straight through the intersection along New Brighton Road on a green light could potentially collide with a vehicle turning left using the free left turn from Golf Links Road onto New Brighton Road.
9. Therefore, the project team considers that for safety reasons the bus lane on the downstream side of the intersection should be removed, and the bus can merge into the traffic lane from the bus stops outside The Palms on New Brighton Road. This will have a negligible effect on the reliability and travel time of the bus services.

FINANCIAL IMPLICATIONS

10. Funding for the signalised crossing and associated parking sign changes is provided within the Queenspark Bus Priority project, which is programmed for construction in the 2009/2010 financial year. The estimated cost of the new signalised crossing is \$153,000 and will be constructed in this financial year.

Do the Recommendations of this Report Align with 2009-19 LTCCP budgets?

11. Based on the estimated cost of the signalised crossing, there is sufficient budget within the Queenspark Bus Priority project to carry out the work, which is programmed for implementation in the 2009/2010 financial year.

LEGAL CONSIDERATIONS

12. There are no property issues associated with the new signalised crossing. There are no notable or heritage trees, or heritage or historic buildings, places or objects shown in the City Plan, which are affected by the new signalised crossing. No resource consents are required for the work proposed.

Have you considered the legal implications of the issue under consideration?

13. The removal of the existing 40 kilometre per hour variable speed limit (school zone) outside Burwood School on Lake Terrace Road and New Brighton Road requires a change to the Christchurch City Speed Limits Bylaw 2005 – Register of Speed Limits, 40 kilometre per hour Variable Speed Limits (School Zones) – Clause Ten. This requires Council approval.

Burwood/Pegasus Community Board 16.11.2009

1 Cont'd

14. Community Board resolutions are required to approve the associated traffic and parking restrictions for the signalised crossing. These restrictions are subject to the provisions of the Local Government Act 1974 and 2002, as well as the Land Transport Rule 54002, Traffic Control Devices, which provide for the installation of parking restrictions. Part 1, Clause 5 of the Christchurch City Council Traffic and Parking Bylaw 2008 provides the Council with the authority to install parking restrictions by resolution. The Community Board has delegated authority from the Council to exercise the delegations as set out in the Register of Delegations (April 2008) in relation to the resolution of parking restrictions and traffic control devices.
15. The Council needs to approve the installation of the signalised pedestrian crossing and the revocation of the section of the bus lane along New Brighton Road.

ALIGNMENT WITH LTCCP AND ACTIVITY MANAGEMENT PLANS

16. The recommendations align with Streets and Transport safety programme activities by contributing to the Council's Community Outcomes – Safety and Community.

Do the recommendations of this report support a level of service or project in the 2009-19 LTCCP?

17. As above.

ALIGNMENT WITH STRATEGIES

18. The recommendations align with Council strategies and policies including the Parking Strategy 2003, Pedestrian Strategy 2001 and Road Safety Strategy 2004.

Do the recommendations align with the Council's strategies?

19. As above.

CONSULTATION FULFILMENT

20. The Burwood Primary School Board of Trustees and school principal have been consulted and have no objection to the proposal.
21. The Police Education Officer has been consulted and agrees that a signalised pedestrian crossing will improve the safety and convenience for all road users at this location. The reasons for the signalised pedestrian crossing have been discussed above. In addition, the signalised pedestrian crossing will have the added benefit of reducing the queuing effect through the adjacent Avondale/Bassett roundabout that occurs currently due to the inefficiencies of the school patrol created by the difficult gap selection requirements that are currently experienced by the school patrollers.

STAFF RECOMMENDATION

It is recommended that the Burwood/Pegasus Community Board recommend to the Council the following resolutions for approval:

Remove special vehicle lane:

- (a) That a special vehicle lane, specifically a "bus lane", which restricts the lane for use by buses, bicycles and motorcycles on the north side of New Brighton Road operating at any time, commencing at its intersection with Golf Links Road and extending in an easterly direction for a distance of 38.5 metres be removed.

1 Cont'd

Revoke existing parking restrictions:

- (b) That the stopping of vehicles at any time on the north side of New Brighton Road commencing at a point 119.5 metres east of its intersection with Lake Terrace Road and extending in an easterly direction for a distance of 14.5 metres, be revoked.
- (c) That the stopping of vehicles from 4pm to 6pm Monday to Friday on the north side of New Brighton Road commencing at a point 134 metres east of its intersection with Lake Terrace Road and extending in an easterly direction for a distance of 104.5 metres, be revoked.
- (d) That the stopping of vehicles at any time on the north side of New Brighton Road commencing at a point 238.5 metres east of its intersection with Lake Terrace Road and extending in an easterly direction to its intersection with Bassett Street, be revoked.

Install new parking restrictions:

- (e) That the stopping of vehicles be prohibited from 4pm to 6pm Monday to Friday on the north side of New Brighton Road commencing at a point 69.5 metres east of its intersection with Lake Terrace Road and extending in an easterly direction for a distance of 11 metres.
- (f) That the stopping of vehicles be prohibited from 4pm to 6pm Monday to Friday on the north side of New Brighton Road commencing at a point 87 metres east of its intersection with Lake Terrace Road and extending in an easterly direction for a distance of 23 metres.
- (g) That the stopping of vehicles be prohibited at any time on the north side of New Brighton Road commencing at a point 110 metres east of its intersection with Lake Terrace Road and extending in an easterly direction for a distance of 35 metres.
- (h) That the stopping of vehicles be prohibited from 4pm to 6pm Monday to Friday on the north side of New Brighton Road commencing at a point 149 metres east of its intersection with Lake Terrace Road and extending in an easterly direction for a distance of 77 metres.
- (i) That the stopping of vehicles be prohibited at any time on the north side of New Brighton Road commencing at a point 226 metres east of its intersection with Lake Terrace Road and extending in an easterly direction to its intersection with Bassett Street.

Revoke existing loading zone restrictions:

- (j) That the loading zone (goods vehicles only) time limit five minutes from 8am to 4pm Monday to Friday on the northern side of New Brighton Road commencing at a point 69.5 metres east of its intersection with Lake Terrace Road and extending in an easterly direction for a distance of 10 metres, be revoked.
- (k) That the loading zone (goods vehicles only) time limit five minutes from 8am to 4pm Monday to Friday on the northern side of New Brighton Road commencing at a point 86 metres east of its intersection with Lake Terrace Road and extending in an easterly direction for a distance of 33.5 metres, be revoked.

Install new loading zone restrictions:

- (l) That the parking of vehicles be restricted to a maximum period of three minutes on the northern side of New Brighton Road commencing at a point 69.5 metres east of its intersection with Lake Terrace Road and extending in an easterly direction for a distance of 11 metres. This restriction is to apply from 8.30am to 9.30am and from 2.30pm to 4pm Monday to Friday on school days.

1 Cont'd

- (m) That the parking of vehicles be restricted to a maximum period of three minutes on the northern side of New Brighton Road commencing at a point 87 metres east of its intersection with Lake Terrace Road and extending in an easterly direction for a distance of 23 metres. This restriction is to apply from 8.30am to 9.30am and from 2.30pm to 4pm Monday to Friday on school days.

Remove existing kea crossing:

- (n) That the kea crossing located on New Brighton Road located at a point 125 metres east of its intersection with Lake Terrace Road be removed.

Remove school speed zones:

- (o) That the 40 kilometres per hour variable speed limit located on Lake Terrace Road, servicing Burwood School be removed.
- (p) That the 40 kilometres per hour variable speed limit located on New Brighton Road, servicing Burwood School be removed.

Install new signalised pedestrian crossing:

- (q) That a pedestrian crossing, controlled by traffic signals, be installed on New Brighton Road located at a point 125 metres east of its intersection with Lake Terrace Road.

BOARD RECOMMENDATION

That the staff recommendation be adopted.

PART B - REPORTS FOR INFORMATION

2. DEPUTATIONS BY APPOINTMENT

2.1 MR ROSS HARLAND - WAITIKIRI DRIVE

Mr Ross Harland of Waitikiri Drive, addressed the Board in response to the contents of a staff memorandum dated 11 November 2009 regarding Waitikiri Drive (clause 6.1 refers).

He specifically asked for the Board's support in requesting that a further vehicle count be undertaken in Waitikiri Drive covering the forthcoming summer period including weekends, and further, that early consideration be given by the Council in providing the new vehicle entrance to Bottle Lake Forest Park as detailed in the Management Plan.

The Chairman thanked Mr Harland for his submission which was **received** by the Board.

The Board's decisions on this matter are contained in clause 6.1 (Part B) of these minutes.

2.2 MR TONY DOWELL – DE COURCY PLACE

Mr Tony Dowell, on behalf of the residents of De Courcy Place, presented a submission requesting that the Council consider the replacement of the street trees outside their properties with a lower growing species owing to the issues outlined including the loss of sun and views, and concerns over the progressive intrusion of tree roots and the impacts on adjoining private property.

The Chairman thanked Mr Dowell for his submission which was **received** by the Board.

The Board **decided** to seek a report from staff responding to the request of the residents for the removal and replacement of the street trees in De Courcy Place.

3. PRESENTATION OF PETITIONS

Nil.

4. NOTICES OF MOTION

Nil.

5. CORRESPONDENCE

The Board **received** the following items of tabled correspondence:

- (a) Linda O'Dea, a resident of Sopley Lane, Bexley, thanking the Council for removing graffiti along the fences and substation on the cycle/walking path from Jack Hinton Reserve to the Pages Road bridge.

Ms O'Dea suggested future control options including the commissioning a mural for the fence line involved or that the Council consider planting out the section of walkway similar to what has occurred near the Wainoni Road bridge.

The Board **decided** to refer the correspondence to the Council's Graffiti Office for consideration and response back to the correspondent.

- (b) Neighbourhood Support Canterbury - a suggestion that the Board meet triennially with local Neighbourhood Support Co-ordinators.

The Board endorsed the idea and asked staff to determine how this could be achieved.

- (c) Dorothy Hyland, a resident of Travis Road, expressed concern about the adverse effects of parked vehicles outside her property on Travis Road and requesting that the Council install parking restrictions.

The Board **decided** to refer the request to appropriate staff for consideration and response back to the correspondent and if required, a report be brought to the Board.

6. BRIEFINGS

6.1 WAITIKIRI DRIVE

The Board **received** a memorandum from the Asset and Network Planning Unit Manager dated 11 November 2009, responding to an email from Councillor Chrissie Williams that followed on from a request from Mr Ross Harland to the Board in December 2008 regarding traffic issues in Waitikiri Drive and a subsequent briefing provided to the Board on 2 November 2009.

After questions from members, the Chairman thanked staff for the additional information.

In responding to the deputation from Mr Harland (clause 2.1 refers) and the further details from staff, the Board **decided**:

- (a) To request that a further traffic count be carried out in Waitikiri Drive over the summer period including weekends.
- (b) To request that staff report to the Board on:
- the installation of a painted centre line in Waitikiri Drive and for yellow no stopping lines on the bend in the vicinity of No 79 Waitikiri Drive
 - details of the intended new entrance to the park proposed in the Bottle Lake Forest Park Management Plan before the next Annual Plan process.
- (c) That staff be requested to meet onsite with affected residents to discuss the traffic management measures in (b) above.

7. RESIDENTS' ASSOCIATION/COMMUNITY ORGANISATIONS

Mr Anton Korunic, Chairperson of the Dallington Residents' Association, updated the Board on the Association's recent activities and issues, and he highlighted the recent Skip Day for Clean up the World Day, the upcoming Community Carols event and the Association's 10th anniversary.

He also asked for the Board's support for the Association's request to the Council that right turning green arrows be added to the traffic signals at the New Brighton Road/Marshland Road intersection and also for some clarification on the current utilisation of the Dallington Cottage and the possibility of using the community facility at Biddick Courts for its meetings.

The Chairman thanked Mr Korunic for the update and for the effective work being undertaken by the Association.

The Board **agreed:**

- (a) To support the Dallington Residents' Association and the Golf Link Residents' Association in their endeavours to have right turning green arrows added to the traffic signals at the following intersections:
 - New Brighton Road into Marshland Road.
 - New Brighton Road into Golf Links Road.
- (b) To request that staff provide information to the Board on the community usage of the Dallington Cottage.
- (c) That staff provide a response on the availability or otherwise of the community facility at Biddick Courts, Clayton Place, for use by the Dallington Resident's Association for their monthly evening meetings.

8. COMMUNITY BOARD ADVISER'S UPDATE

The Board **received:**

- Information on Board related activity over the coming weeks including the Burwood/Pegasus Community Networking Forum on Tuesday 17 November, the Youth Alive Trust morning tea for stakeholders, funders and interested parties on Thursday 26 November and the Affirm event on Saturday 5 November 2009 at Wainoni Park.
- Consultation Calendar – Members were advised that public feedback on the Rawhiti Avenue street renewal project closes on 7 December 2009.
- Council Update October 2009.

The Board **received** for information, the Chief Executive's October Council Update.

- New Brighton Capital Projects – Update.
 - Marine Parade – the roadside car park formation/landscaping redevelopment is underway.
 - Central New Brighton Beach Park – the sealing of the gravel path is underway including a concrete plinth for the future installation of a memorial cairn as proposed by the Pier and Foreshore Society Inc.
- Board Funding 2009/10 Update.

9. BOARD MEMBERS' QUESTIONS

Nil.

PART C - REPORT ON DELEGATED DECISIONS TAKEN BY THE BOARD

10. CONFIRMATION OF MEETING MINUTES – 2 NOVEMBER 2009

The Board **resolved** that the minutes of its meeting of 2 November 2009, be confirmed.

11. EASEMENT OVER WILMINGTON RESERVE – 26 BALTIMORE GREEN

The Board considered a report seeking its approval under delegated authority to grant an electricity easement over the reserve at 26 Baltimore Green.

The Board **resolved** to approve the right to convey electricity in gross in favour of Orion New Zealand Limited over part Lot 123 DP 83231 marked L on DP 83231, pursuant to Section 48 of the Reserves Act 1977.

(**Note:** Gail Sheriff declared an interest in this item and took no part in the discussion and voting thereon.)

12. BURWOOD/PEGASUS COMMUNITY BOARD'S 2009/10 DISCRETIONARY RESPONSE FUND - APPLICATION

The Board considered a report requesting funds from its 2009/10 Discretionary Response Fund for the Festival City Trust towards 'Buskers at Brighton', as part of the World Buskers Festival.

The Board noted that the amount now being sought by the applicant had increased from \$8,250 to \$10,000 owing to adjustments in the event budget.

The Board **resolved** to allocate \$10,000 from the Burwood/Pegasus 2009/10 Discretionary Response Fund towards 'Buskers at Brighton', as part of the World Buskers Festival from 30 to 31 January 2010.

13. BURWOOD/PEGASUS YOUTH DEVELOPMENT SCHEME - FUNDING APPLICATION - JORDAN VON HAGEN

The Board considered a report seeking funding assistance from the 2009/10 Youth Development Scheme.

The Board **resolved** to allocate \$100 from the 2009/10 Youth Development Scheme fund to Jordan Von Hagen to compete in the New Zealand Diving Championships in Auckland from 23 to 25 October 2009.

14. BURWOOD/PEGASUS YOUTH DEVELOPMENT SCHEME - FUNDING APPLICATIONS - JUMP JAM

The Board's considered a report seeking funding assistance for four applicants from the 2009/10 Youth Development Scheme.

The Board **resolved** to allocating \$100 each to Levi Cunniffe, Briana Haymes, Brendon Doidge and Shea Brand from the 2009/10 Youth Development Scheme to represent Shirley Intermediate School at the New Zealand Student Jump Jam Leader Finals in Auckland from 18 to 21 November 2009.

Burwood/Pegasus Community Board 16.11.2009

15. BURWOOD/PEGASUS COMMUNITY BOARD – 2010 MEETING DATES

The Board considered a report seeking the adoption of its ordinary meetings schedule for 2010.

The Board **resolved**:

- (a) To adopt its ordinary meeting dates for 2010 to be held at 5pm in the Board Room, corner Beresford and Union Streets, New Brighton as follows:

Monday 1 February 2010
Monday 15 February 2010
Monday 1 March 2010
Monday 15 March 2010
Monday 29 March 2010
Monday 12 April 2010
Monday 3 May 2010
Monday 17 May 2010
Monday 31 May 2010
Monday 14 June 2010 (followed by Board Workshop re Strengthening Communities Funding)
Monday 28 June 2010
Monday 12 July 2010 (including allocation of 2010/11 Strengthening Communities Funding)
Monday 2 August 2010
Monday 16 August 2010
Monday 30 August 2010
Monday 13 September 2010

- (b) That the Burwood/Pegasus Small Grants Fund Assessment Committee meeting be held on Thursday 19 August 2010 at 5pm.

16. BURWOOD/PEGASUS COMMUNITY BOARD - RECESS COMMITTEE

The Board considered a report seeking approval to put in place delegation arrangements for matters of a routine nature (including applications for funding) normally dealt with by the Board, over the forthcoming Christmas/New Year period.

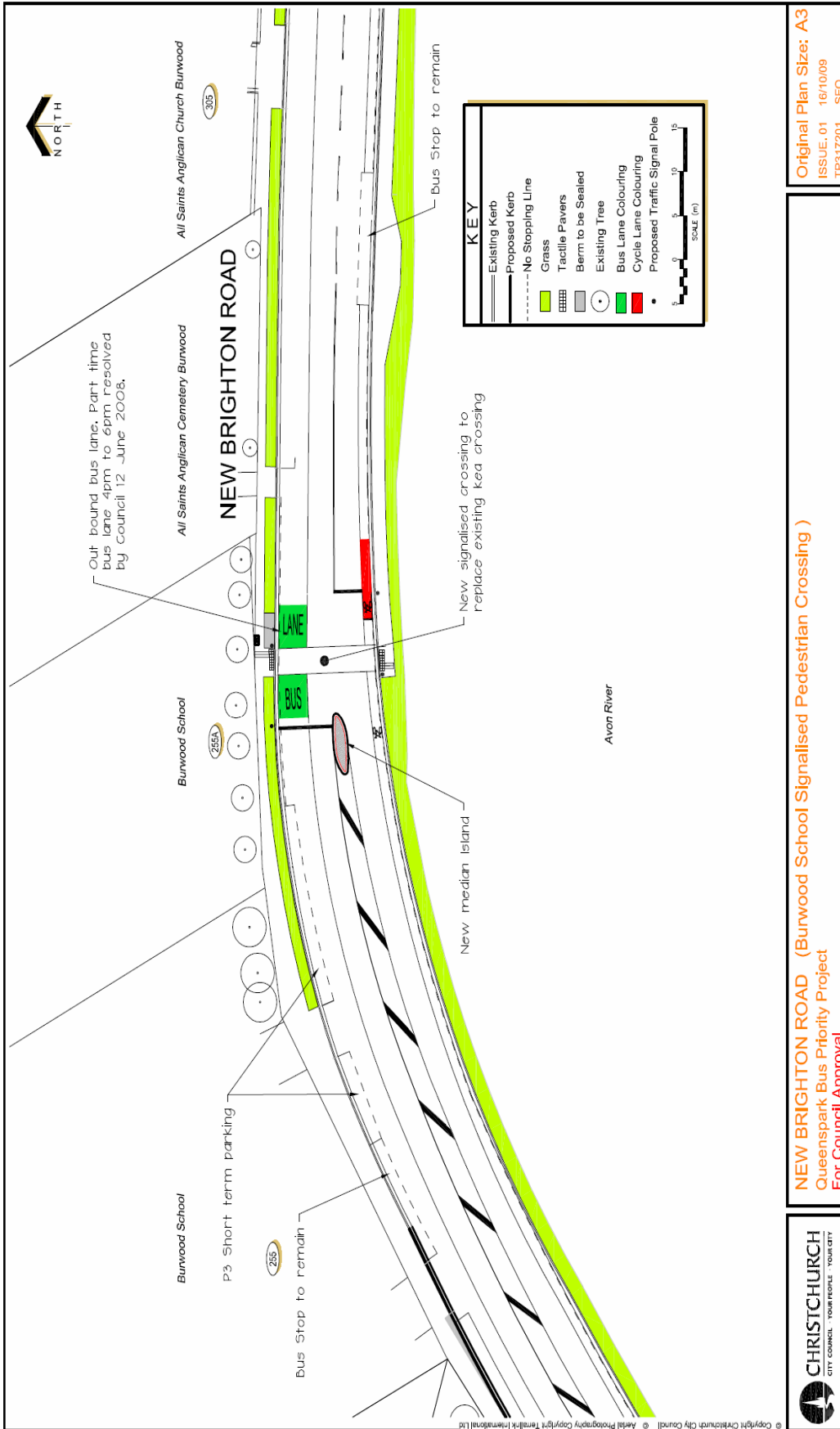
The Board **resolved**:

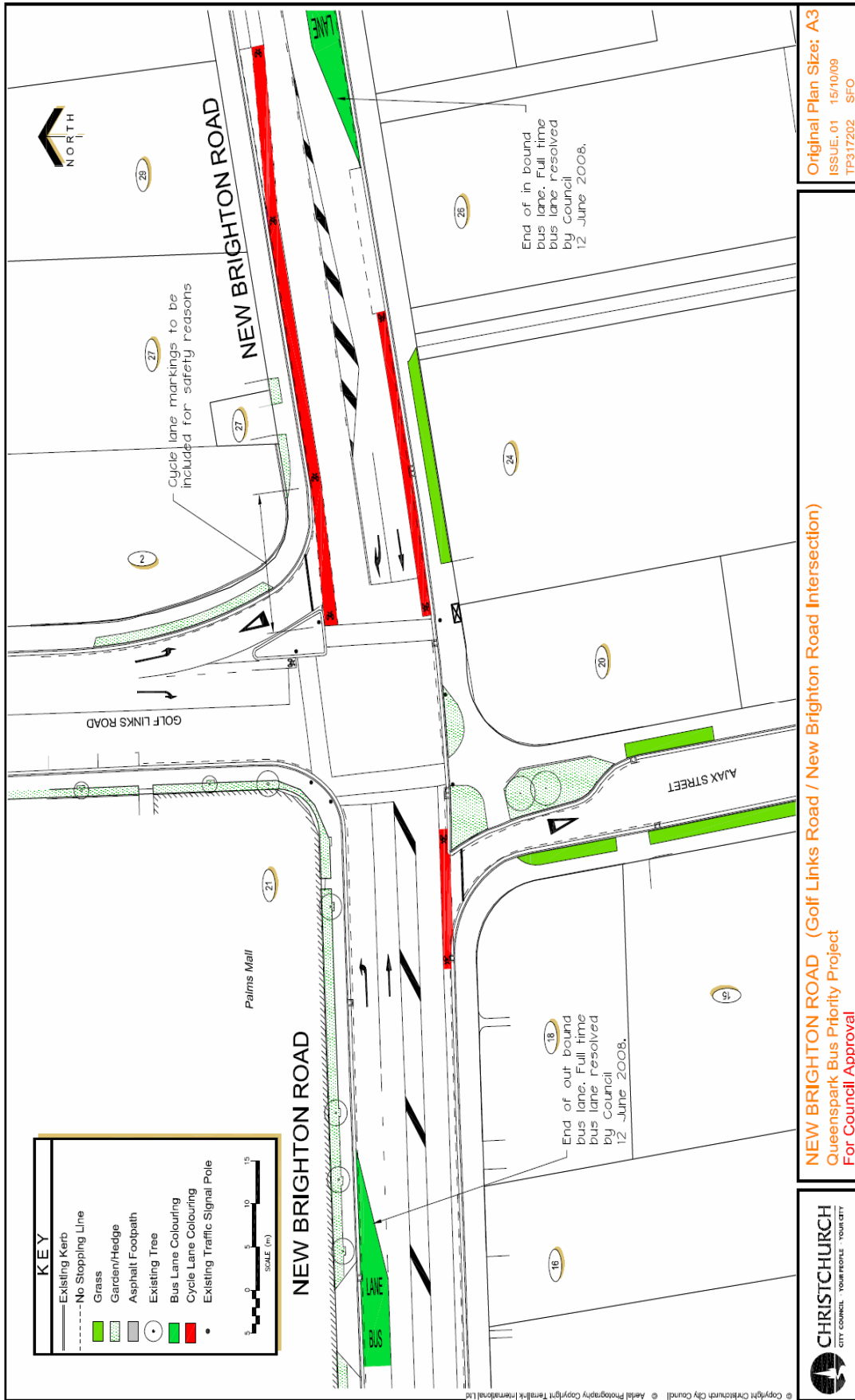
- (a) That a Board Recess Committee comprising the Board Chairman, Deputy Chairman and one other Board member available (or their nominees) be authorised to exercise the delegated powers of the Board for the period following its 14 December 2009 meeting until the Board resumes its scheduled business in February 2010.
- (b) That the application of any such delegation be reported back to the Board for record purposes.

The meeting concluded at 6.56pm.

CONFIRMED THIS 30TH DAY OF NOVEMBER 2009

**DAVID EAST
CHAIRMAN**





10. 12. 2009

Burwood/Pegasus Community Board 16.11.2009

- 13 -

CLAUSE 11 ATTACHMENT

