

13. 8. 2009

HAGLEY/FERRYMEAD COMMUNITY BOARD
1 JULY 2009

Minutes of a meeting of the Hagley/Ferrymead Community Board
held on Wednesday 1 July 2009 at 3.08pm in the Board Room,
Linwood Service Centre, 180 Smith Street, Linwood.

PRESENT: Bob Todd (Chairperson), Rod Cameron, John Freeman,
Yani Johanson and Brenda Lowe-Johnson.

APOLOGIES: Apologies for absence were received and accepted from
Tim Carter and David Cox.

The Board reports that:

PART A - REPORTS REQUIRING A COUNCIL DECISION

**1. FERRY ROAD - PROPOSED P60 AND P60 LOADING ZONE-GOODS VEHICLES ONLY
PARKING RESTRICTIONS**



General Manager responsible:	General Manager City Environment, DDI: 941 8608
Officer responsible:	Transport and Greenspace Manager
Author:	Steve Hughes, Traffic Engineer - Community

PURPOSE OF REPORT

1. The purpose of this report is to recommend that the Council revoke an area of existing P60 parking on the north-east side of Ferry Road, and to install in its place two smaller areas of P60, one for all vehicles, and a separate P60 Loading Zone - Goods Vehicles only.

EXECUTIVE SUMMARY

2. The Network Operations section of the Council has received a request from the Christchurch Police to clarify an area of confused parking on the north-east side of Ferry Road between Barbadoes Street and St Asaph Street opposite the Christchurch Polytechnic Institute of Technology (refer **attached**).
3. Hi-Tech Sheetmetals has operated out of a building on the corner of Ferry Road and St Asaph Street for over 16 years. Prior to August 2006, a 30 metre P5 Loading Zone and a 16 metre P60 Loading Zone-Goods Vehicles Only were situated outside their Ferry Road frontage.
4. In August 2006, a review of the Central City Loading Zones was approved by the Council. As a result of this review the two separate areas of loading zone parking were resolved into a 46 metre length of P60 parking able to be used by any vehicle. This is the current situation as approved by this Community Board and the Council.
5. Unfortunately, the P60 parking signs have been removed by an unknown person/s and in addition, the yellow road markings used to indicate the previous two loading zones have not been removed from the road surface. With the P60 parking signs missing and the road incorrectly marked for the current P60 parking restriction, this is causing confusion and aggravation for motorists and for Hi-Tech Sheetmetals. To improve this situation until this report has been presented to the Board, the missing P60 signs were re-installed several weeks ago.

Hagley/Ferrymead Community Board 1.7.2009

1 Cont'd

6. Deliveries are made to and from Hi-Tech Sheetmetals by large trucks. Due to their size, most of these trucks cannot enter the building. Therefore the safest place for these large trucks to park while loading or unloading is in the present 46 metres of P60 parking on the north-east side of Ferry Road outside Hi-Tech Sheetmetals.
7. If no other vehicles are parked in this area, the trucks can use it to get as far off the road carriageway as possible. Forklifts are used to transfer the loads into or out of the building and can take over 30 minutes to unload and/or load a truck. However, if other vehicles are parked in the P60 parking area outside the premises, the loading and unloading is made considerably more difficult and may result in the delivery trucks having to double park and the forklifts having to use the carriageway to unload them. This causes safety issues for other vehicles using this section of road.
8. If no other parking is available, goods service vehicles have the legislative defence that they can double park in certain circumstances as long as they are not being inconsiderate to other road users. The nearby corner at the Ferry Road/St Asaph Street intersection restricts the view of the activities taking place and therefore it could be argued that by being double parked on the carriageway to load or unload they are in fact being inconsiderate. Other than this P60 parking area, there is no other suitable alternative area for trucks to park off the carriageway and allow the safe loading and unloading of large loads of metal products.
9. The proposed installation of 30 metres of a P60 Loading Zone-Goods Vehicles Only parking restriction will address the need for a medium to long term loading facility at this location and prevent road safety issues caused by the loading and unloading of large trucks double parked in the carriageway. While allowing 30 metres of Loading Zone-Goods Vehicle Only may seem excessive, there are two vehicle entrances into Hi-Tech Sheetmetals within this 30 metre area that reduces the available parking area to approximately 22 metres. This 22 metre area will allow room for one truck to be unloaded and for the forklift to be able to access one of the two vehicle entrances.
10. While the main beneficiary of the proposed changes will be Hi-Tech Sheetmetals, the P60 Loading Zone - Goods Vehicle Only can also be used by any other business in the area. The remaining 16 metres of existing P60 parking that is outside the south-east end of Hi-Tech Sheetmetals will remain as a P60 parking area that can be used by any vehicle.
11. Hi - Tech Sheetmetals have been consulted in regard to this proposal and support it. No other property is affected by this proposal.

FINANCIAL IMPLICATIONS

12. The estimated cost of this proposal is approximately \$400.

Do the Recommendations of this Report Align with 2006-16 LTCCP budgets?

13. The installation of road markings and signs is within the LTCCP Streets and Transport Operational Budgets.

LEGAL CONSIDERATIONS

14. Part 1, Clause 5 of the Christchurch City Council Traffic and Parking Bylaw 2008 provides the Council with the authority to install parking restrictions by resolution.
15. The installation of any parking restriction signs and/or markings must comply with the Land Transport Rule: Traffic Control Devices 2004.

Have you considered the legal implications of the issue under consideration?

16. As above.

1 Cont'd

ALIGNMENT WITH LTCCP AND ACTIVITY MANAGEMENT PLANS

17. Aligns with the Streets and Transport activities by contributing to the Council's Community Outcomes - Safety and Community.

Do the recommendations of this report support a level of service or project in the 2006-16 LTCCP?

18. As above.

ALIGNMENT WITH STRATEGIES

19. The recommendations align with the Council Strategies including the Parking Strategy 2003, Road Safety Strategy 2004, and the Safer Christchurch Strategy 2005.

Do the recommendations align with the Council's Strategies?

20. As above.

CONSULTATION FULFILMENT

21. Hi-Tech Sheetmetals is the only property directly affected by this proposal. They have been consulted and various options discussed in regard to this proposal. They agree to the proposal outlined in this report.

22. There is no residents' association in this area.

STAFF RECOMMENDATION

It is recommended that the Council:

Revoke the following parking restrictions:

- (a) Revoke the existing P60 parking restrictions on the north-east side of Ferry Road commencing at a point 79.5 metres north-west of the intersection with Barbadoes Street and extending for 46 metres in a north-westerly direction.

Approve the following on Ferry Road:

- (b) That the parking of vehicles be restricted to a maximum period of 60 minutes on the north-east side of Ferry Road commencing at a point 79.5 metres north-west from its intersection with Barbadoes Street and extending in a north-westerly direction for a distance of 16 metres.
- (c) That a time limited Loading Zone-Goods Vehicles Only (maximum period of 60 minutes) be installed on the north-east side of Ferry Road commencing at a point 95.5 metres north-west from its intersection with Barbadoes Street and extending in a north-westerly direction for a distance of 30 metres. This restriction to apply at any time.

BOARD RECOMMENDATION

That the staff recommendation be adopted.

PART B - REPORTS FOR INFORMATION

2. DEPUTATION BY APPOINTMENT

Mr Bell, resident of Ormandy Place, addressed the Board regarding a eucalyptus tree located in Bromley Cemetery, adjacent to the eastern boundary of his property. He explained the scale of the nuisance caused by the debris and shading from the tree, and how this was impacting upon his quality of life.

The Chairperson thanked Mr Bell for his deputation to the Board.

This matter was considered during discussion on clause 12 of these minutes.

3. PRESENTATION OF PETITIONS

Nil.

4. NOTICES OF MOTION

Nil.

5. CORRESPONDENCE

Nil.

6. BRIEFINGS

Nil.

7. KEEP NEW ZEALAND BEAUTIFUL CONFERENCE 2009 – BOARD MEMBER ATTENDANCE

The Board considered a report seeking to appoint a Board member to attend the Keep New Zealand Beautiful Conference 2009 and Annual General Meeting in Rotorua from Friday 25 to Sunday 27 September 2009.

The Board **decided** to defer consideration of this report until the Board meeting of 15 July 2009.

8. COMMUNITY BOARD ADVISER'S UPDATE

The Board received updates from the Community Board Adviser on Board related activities. Specific mention was made of upcoming meetings, including an additional Board Seminar to be held on Tuesday 14 July 2009 at 3pm.

9. BOARD MEMBERS' QUESTIONS

Nil.

13. 8. 2009

Hagley/Ferrymead Community Board 1.7.2009

10. BOARD MEMBERS' INFORMATION EXCHANGE

- Martindales Road Closure at Railway Bridge. The Board discussed the safety concerns in this area. The Chairperson confirmed that the Heathcote Valley Residents' Association has been advised that the Board may consider supporting a submission to the New Zealand Transport Authority on this matter.
- Sumner Redcliffs Historical Society. The matter of a previous Board decision regarding a discretionary response fund allocation to the Historical Society was discussed. The Chairperson advised that a report on this matter will be presented to the Board in August 2009.

PART C - REPORT ON DELEGATED DECISIONS TAKEN BY THE BOARD

11. CONFIRMATION OF MEETING MINUTES - 17 JUNE 2009

The Board **resolved** that the minutes of the Board's ordinary meeting of 17 June 2009 be confirmed.

12. BROMLEY CEMETERY EUCALYPTUS TREE - REQUEST FOR TREE REMOVAL

The Board considered a report seeking to obtain a decision from regarding the retention or removal of a eucalyptus tree (*Eucalyptus fastigiata*) located on Bromley Cemetery, near the boundary of 6 Ormandy Place, clause 2 refers.

STAFF RECOMMENDATION

That the Hagley/Ferrymead Community Board decline the request to remove the eucalyptus tree from Bromley Cemetery because of debris and shade issues, and continue to maintain the tree to internationally recognised and accepted arboricultural practices, standards and procedures.

Staff provided advice on the information in the report and the deputation from Mr Bell. The Board considered that the eucalyptus tree in Bromley Cemetery is providing unreasonable nuisance to Mr Bell. A Board member requested it be noted that the Board was supportive of the proposed landscape plan and tree maintenance plan for Bromley Cemetery, and that if the Board's decision on this matter has implications on this, staff should consider a report to the Board for a financial contribution.

The Board **resolved** that the Council pay for the removal and replacement of the eucalyptus tree in Bromley Cemetery, adjacent to the eastern boundary of Mr Bell's Ormandy Place property.

The meeting concluded at 4.19pm.

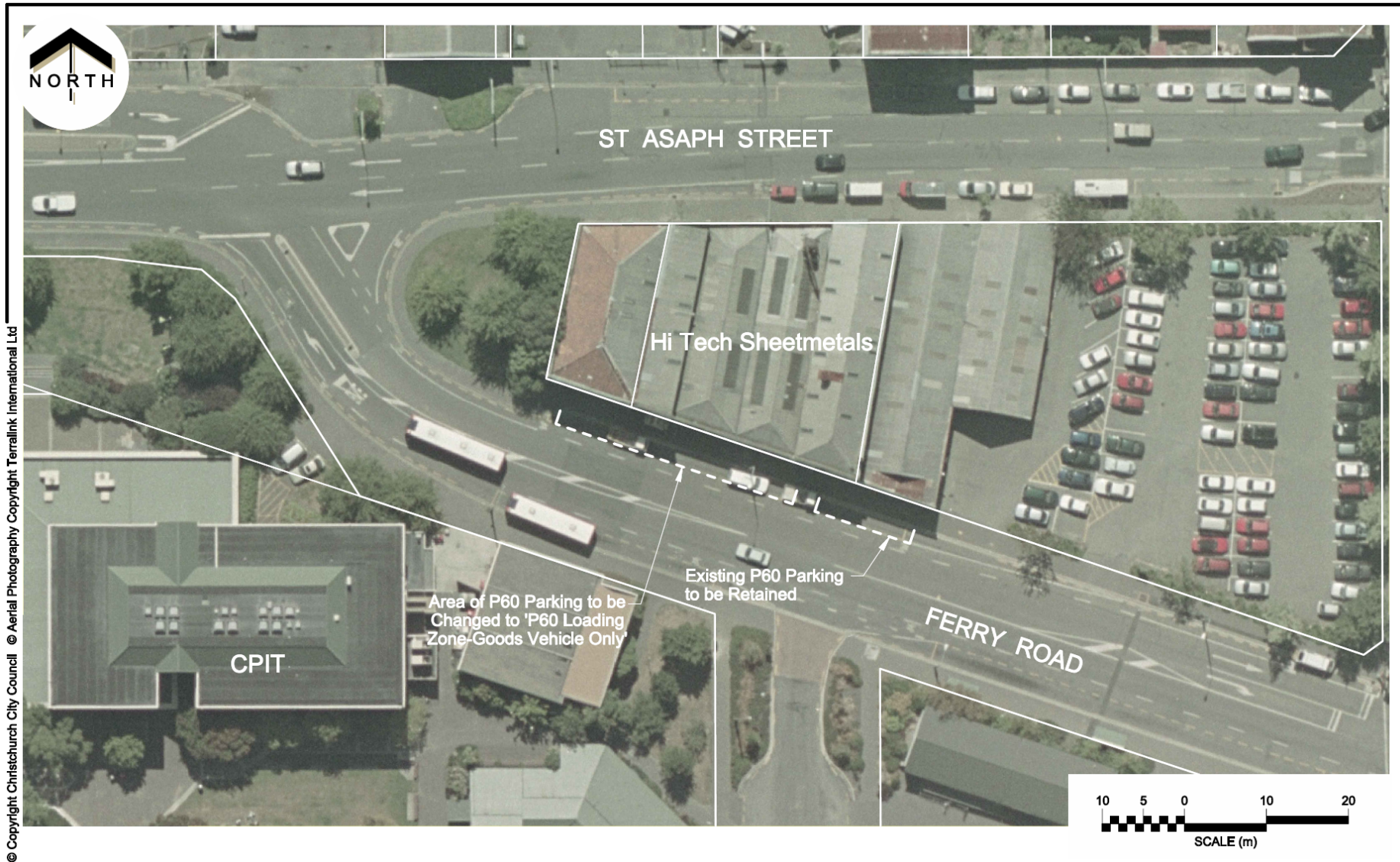
CONFIRMED THIS 15th DAY OF JULY 2009

**BOB TODD
CHAIRPERSON**

13. 8. 2009

Hagley/Ferrymead Community Board 1.7.2009

ATTACHMENT TO CLAUSE 1



© Copyright Christchurch City Council © Aerial Photography Copyright Terralink International Ltd

Report



FERRY ROAD

Proposed P60 and P60 Loading Zone-Goods Vehicles Only Parking Restrictions
For Board Approval

Original Plan Size: A4

ISSUE.1 11/05/09
TG100964 JTP 500000