

**Christchurch City Council**

**Draft Metropolitan Sports Facilities Plan**

---

**April 2008**

## 1. Executive summary

---

Sporting codes, community funding organisations and government agencies have advocated for the establishment of a longer term planning process to map the future development of metropolitan sporting facilities. Through the establishment of a long-term planning framework, Council and other stakeholders can better work together to plan, fund, construct and operate a suite of facilities to best meets future needs of Christchurch (and the wider region) within limited available resources.

The Draft Metropolitan Sports Facilities Plan allows Council to prioritise options for metropolitan sports facility developments during the next 20 years. Metropolitan sport facilities provide benefits and services for sport at a city-wide, national or international level; facilities below this threshold are not included in the plan.

An examination of Council strategy, consultation with stakeholders and Councillor feedback, combined with other research has provided the information base from which key issues were identified, including a need to:

- Increase large-area indoor sports facility provision.
- Continue reshaping QEII Park in line with the QEII Concept Plan 2005, ideally accommodating Canterbury Cricket and providing a viable test cricket venue.
- Continue to investigate the provision of a flat-water facility.
- Secure the on-going operation of motorsport at Ruapuna.
- Retire facilities no longer meeting current and projected needs.
- Investigate the provision of additional all-weather/artificial sports surfaces.
- Maintaining current levels of service at most existing Council-owned metropolitan sports facilities.
- Proactively reviewing lease agreements.

Preferred solutions were selected using the criteria approved by Council in 2007. The criteria also enabled an assessment of priorities among these preferred solutions.

Identified priorities for metropolitan sport facility developments during the next 20 years are listed in the following table. Project timeframes and the extent of any Council financial contribution will be determined through the 2009-2019 LTCCP process. Council will make decisions on contributions to specific projects based on a detailed business case developed at the time, and not automatically as a result of Council adopting this plan.

The information in the table includes the indicative priority, description of the proposed development and an indicative range of capital costs. The indicative capital range may change considerably when detailed plans are established for each proposal. Council will not be the only contributor. In reality, facility developments will not be feasible without capital and operational contributions from others.

The plan recognises there will also be operational cost implications of any projects. However, the majority of operational costs will be recovered through user charges and/or partner contributions.

Current levels of service at Porritt Park, the Addington Fencing Centre and Sockburn Squash centre will be maintained.

Priorities for metropolitan sports facility developments:

Priority	Action Description	Indicative financial implications (2008 value) <sup>1</sup>
1	Development of a <b>mid-sized indoor sports arena</b> (at least eight courts and 3000 seats) at Addington	\$15 to \$19 million CAPEX
1	Upgrade <b>Cowles Stadium</b> seating (1500 seats), changing areas and event infrastructure.	\$1 to \$1.5 million CAPEX
1	Complete the upgrade of <b>Ruapuna Raceway</b> hard-surface track to comply with international standards, improve garaging and hospitality facilities and continue the work on noise issues.	Under investigation
1	Retire Denton Park.	Possible OPEX saving
1	Proactively <b>review leases</b> for Council facilities with Council assuming asset management responsibilities in return for higher rent or transparent subsidy.	Unknown
1	Re-acquire lease and retire <b>Rugby League Park</b> .	Unknown
2	<b>English Park</b> remedial repair work to the pitch.	\$0.5 to \$1 million CAPEX
2	Develop up to 40 new <b>outdoor courts</b> at Addington to relocate netball from Hagley Park (with half the courts shared with tennis).	\$2 to \$3 million CAPEX
2	Development of an ICC-compliant <b>arena for test cricket</b> on the Village Green at QEII (alternative option is the Bert Sutcliffe Oval at Lincoln).	\$5 to \$10 million CAPEX
2	Incremental improvements to <b>Kerr's Reach</b> through removal of silt and weed and development of shore facilities.	Unknown
2	Continue to investigate the development of a <b>flat-water sports facility</b> at Henderson's Basin.	Under investigation
2	Reconfigure existing layout of <b>QEII Main Stadium</b> for rectangular field sports (rugby, soccer, rugby league) by removing the athletics track and upgrading the warm-up track on the <b>QEII No. 2</b> Ground following the IPC Athletics event in 2011  maintain the status quo, keeping an athletics track in the Main Stadium  <b>OR</b>  <b>QEII Main Stadium</b> maintain the status quo, keeping an athletics track in the Main Stadium	Unknown <sup>2</sup>
2	Investigate the opportunity to locate metropolitan <b>facilities for other indoor sports</b> within the Wigram Hangars or at other large indoor spaces within the city as opportunities arise.	Unknown
2	Develop <b>outdoor artificial surfaces</b> to provide all-weather training and playing facilities at <b>QEII Park</b> .	\$1 to \$2 million CAPEX
2	Investigate partnership for provision of <b>outdoor artificial surfaces</b> to provide all weather playing and training facilities for city-wide use for rugby, soccer, rugby league and an additional hockey field.	Under investigation
2	Upgrade <b>Cuthberts Green Softball</b> facility to improve seating, provide a small corporate hosting area and improve office facilities.	\$0.36 million Council \$0.1 million
3	Investigate site locations for an alternative outdoor cycling track possibly as part of a cycling park development to meet minimum standards for training and local competition.	Unknown

<sup>1</sup> Capital cost estimates are indicative estimates based on other known similar or planned developments. A 5% construction cost inflation rate has been used where estimates were sourced from past years. More detailed capital costs will be developed as part of the business case for each project

<sup>2</sup> Seeking clear direction before pursuing indicative costs for any Main Stadium actions.

## Glossary of terms used in the plan

**Activity centres** Key commercial/business centres identified in the UDS as focal points for the transport network and suitable for more intensive mixed-use development.

**Asset management plan** Council plan detailing and forecasting maintenance requirements for a Council facility over time.

**Co-location** Shared use by two or more sporting organisations.

**Community Outcomes** Identified goals of communities in relation to the present and the future for the social, economic, environmental and cultural well-being of the community.

**Facilities (Assets)** Buildings or built sports arenas, excluding internal fittings and hardware.

**Franchise Sport** Regionally or nationally based ownership of rights to compete in national or international competition, often involving players paid to play e.g. Canterbury Crusaders, Tactix Netball, Canterbury Rams, Christchurch Sirens and Canterbury United.

**ICC** International Cricket Council.

**IPC** International Paralympics Committee.

**GST** All dollar amounts are GST exclusive.

**LTCCP** Long Term Council Community Plan.

**Metropolitan sports facilities** Facilities which provide benefits and services for sport at a city-wide, national or international level.

**Network** A framework for the provision of various sized facilities has been developed to ensure city-wide access to a range of facilities.

**Partnership** A relationship that enables a combined approach to funding, supplying, managing or supporting aspects of initiatives between citizens, communities, organisations and Council.

**Services** The activities that happen *within* facilities.

**UDS** Greater Christchurch Urban Development Strategy and Action Plan 2007.

## Contents

<b>1. Executive summary.....</b>	<b>i</b>
<b>2. Introduction .....</b>	<b>1</b>
Background .....	1
<b>3. Plan goal, objectives, scope and methodology.....</b>	<b>2</b>
Goal .....	2
Objectives.....	2
Scope .....	2
Methodology.....	2
<b>4. Strategic context and alignment.....</b>	<b>3</b>
Why Council provides sports facilities.....	3
Alignment with Council’s Vision, Community Outcomes and Strategic Directions.....	3
Alignment with Council planning.....	4
Working in a changing environment.....	7
A framework for decision making.....	7
Good fit with transport.....	7
Land banking and land costs .....	7
Capital investment .....	7
Existing built value .....	8
<b>5. Criteria for prioritising proposed sports facility developments.....</b>	<b>8</b>
<b>6. Situational Analysis .....</b>	<b>9</b>
Key issues .....	9
Sports that are important to city residents .....	9
Fit with regional, national and international sport needs.....	10
Good fit between events and supply of metropolitan sports facilities.....	10
Emergence of franchised sport.....	11
Demographic data .....	11
Societal trends.....	11
Sport facility provision trends.....	12
Asset management planning .....	13
High performance sport centre at QEII Park.....	13
Shape and condition of current network .....	13
Large sites to cluster metropolitan sports facilities.....	15
Priorities from Recreation and Sports Facilities Strategy (2003) .....	17
<b>7. Key issues of sport in 2008.....</b>	<b>17</b>
<b>8. The plan for the provision of metropolitan sports facilities .....</b>	<b>19</b>
Key issues .....	19
Key attributes of the provision plan:.....	19
Proposed solutions .....	20
Indoor sports provision .....	20
Outdoor sports provision.....	22

<b>9. Application of criteria to identified options .....</b>	<b>27</b>
<b>10. Priorities for metropolitan sports facility developments .....</b>	<b>30</b>
Levels Of Service.....	31
<b>11. List of appendices .....</b>	<b>31</b>
Map of existing metropolitan sports facilities across the city.....	31
Sport issues beyond scope of metropolitan sports facilities plan.....	31
Council reports referred to in the plan.....	31
List of stakeholders consulted .....	31
Issue and condition assessment summary table .....	31
Sports Membership Statistics .....	32

### List of Tables

Table 1: Condition of Council and non-Council owned metropolitan sports facilities .....	13
Table 2: Current metropolitan event stadiums in city .....	15
Table 3: Priorities from Sports Facilities Strategy (2003) .....	17
Table 4: Assessment of preferred options.....	27
Table 5: Priorities for metropolitan sports facility developments .....	30

## 2. Introduction

---

Development of the Metropolitan Sports Facilities Plan was requested by Council during work on the 2006-2016 Long Term Council Community Plan (LTCCP). It is a co-ordinated, city-wide, long-term planning framework for the provision of metropolitan sporting facilities within Christchurch City.

The long-term plan will allow Council to work with various sporting codes, government and funding organisations to fund, build and operate a suite of metropolitan sporting facilities to better cater for the long-term needs of the community.

The Metropolitan Sports Facilities Plan allows Council to define its role in the provision of facilities and prioritise the delivery of these facilities during the next 20 years. Project timeframes and the nature of any Council financial contribution to the projects will be determined through the 2009-2019 LTCCP process.

### Background

In 1996 Council adopted the Recreation and Sport Policy. This policy outlines and prioritises Council's support for recreation and sport and underpins all other recreational and sporting strategies and implementation plans.

Six years later, Council adopted the Physical Recreation and Sport Strategy. This identifies a common direction for organisations involved in physical recreation and sport in the City. While the Strategy does not specifically define Council's direction for sport in the City, it does recognise Council is one of a number of organisations responsible for implementing goals within the strategy.

A review of the 2002 Physical Recreation and Sport Strategy revealed strong links between the Strategy, LTCCP and Community Outcomes to drive the Metropolitan Sports Facilities Plan.

A Sports Facility Strategy was developed in 2003, listing known sports facility issues and ranking these in priority order. No related implementation plan was developed and there was no provision for implementation included in subsequent Council Community Plans. Council adopted the first city-wide Aquatic Facilities Plan in 2006, the implementation plan for aquatic provision of the 2003 Sports Facility Strategy. The 2003 Sports Facility Strategy has contributed to the Metropolitan Sports Facilities Plan.

There is no provision for funding of additional Metropolitan Sports Facilities in the 2006-2016 LTCCP.

### 3. Plan goal, objectives, scope and methodology

---

#### Goal

To develop a plan to enable Council to prioritise the provision of metropolitan sports facilities for the next 20 years.

#### Objectives

- Identify and prioritise metropolitan sports facility developments for the next 20 years where Council has a role.
- Put forward Council's prioritised sport facility developments as identified in the Plan for consideration for funding as part of the 2009-2019 LTCCP process.
- Recommend how Council will help address any non-facility based needs of sporting codes as identified through the research and consultation with sporting organisations in developing the Metropolitan Sports Facilities Plan.

#### Scope

The scope of the Metropolitan Sports Facilities Plan is the provision of metropolitan sports facilities.

**Metropolitan sport facilities are facilities which provide benefits and services for sport at a city-wide, national or international level.**

The Plan covers:

- Council-owned metropolitan sports facilities.
- The suite of metropolitan sports facilities operated by Vbase. (This plan recognises that the development of these facilities is managed through Council's relationship with Vbase as venue managers).
- Non-Council owned metropolitan sports facilities. (The Council is not the only provider/owner of sports facilities in the city and any proposed solutions will consider the affect on and possible partnership opportunities with non-Council providers).

The Plan specifically excludes:

- Natural grass sports fields (unless where associated with a metropolitan sports stadium).
- Aquatic, marine or coastal water-related facilities.
- AMI Stadium Upgrade (other than the impact of the completed project).

#### Methodology

Council requested the Plan be develop during the 2006-2016 LTCCP process to enable the prioritisation of metropolitan sports facility developments during the next 20 years and inform funding in the 2009-2019 LTCCP process.

The Strengthening Communities Portfolio Group steered the development of the Plan through its meetings in September 2006, April 2007 and July 2007. Council approved in August 2007

the project brief and criteria for prioritising identified facility developments. A summary of the project research and provisional findings were presented at a Council seminar in February 2008 and all feedback incorporated into the plan.

Extensive research and consultation was undertaken to inform development of the plan. This included:

- Councillor feedback.
- A review of Council policies, strategy and strategic directions relating to sport.
- Extensive consultation with sporting codes and other stakeholders such as key sports media, Government agencies, funding agencies and Vbase.
- A review of current and future societal trends affecting sport.
- A review of the nature, condition and functionality of existing assets.

Key issues were identified through this research and consultation and a range of solutions developed to resolve or mitigate the issues. The plan process scrutinised potential solutions against Council's criteria to identify priorities for metropolitan sport facility developments. The priorities identified in this plan will inform the 2009-2019 LTCCP process.

The research and consultation also identified issues which do not require a metropolitan facility solution. These have been recorded and a series of actions proposed. These do not form part of this plan.

A comprehensive communications plan kept all key stakeholders well informed of progress with development of a Metropolitan Sports Facilities Plan. This featured an e-newsletter to connect with all key stakeholders, including elected members.

## 4. Strategic context and alignment

---

### Why Council provides sports facilities

Council has a commitment in the 2006-2016 LTCCP to provide accessible pools and leisure centres, stadia and sporting facilities so people can participate in sport and physical activity at whatever level they chose, including local, national and international sport.<sup>3</sup>

### Alignment with Council's Vision, Community Outcomes and Strategic Directions

There are clear linkages between sports facilities and most of the community outcomes and the strategic directions of Council. Metropolitan sports facilities are an important for Council to achieve its vision of Making Christchurch a world-class boutique city.

The role of metropolitan sports facilities is closely aligned with Council's strategic direction for Strong Communities as summarised below:<sup>4</sup>

- Encourage residents to enjoy living in the city and to have fun, by: *Providing and supporting sport, recreation and leisure activities.*
- Help communities to meet their needs, by: *Providing accessible and welcoming public buildings, spaces and facilities.*

---

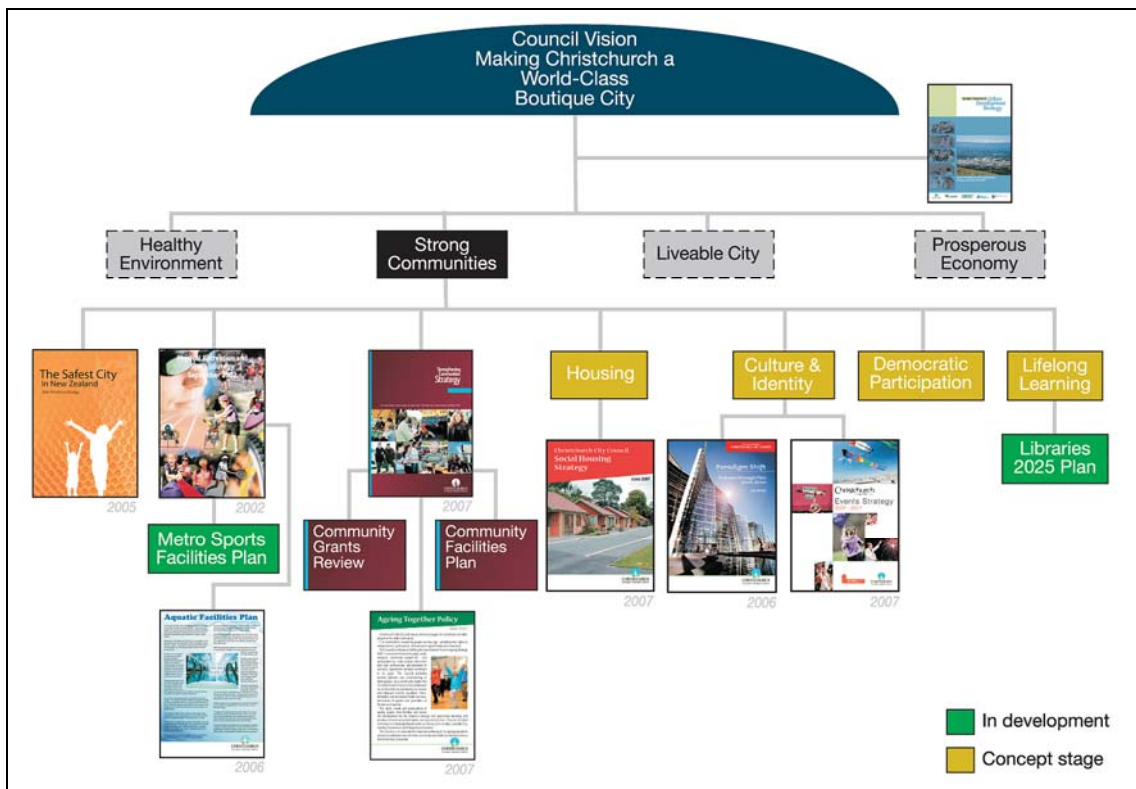
<sup>3</sup> 2006 LTCCP Recreation and Leisure section p. 129

<sup>4</sup> 2006 LTCCP Strategic Directions Summary section p. 49

- Encourage healthy and active lifestyles, by: *Providing and supporting sport, recreation and leisure activities; Providing parks, public buildings and other facilities that are accessible, safe, welcoming and enjoyable to use.*

**Alignment with Council planning**

Council is developing a suite of policies, strategies and plans to identify its contribution to fulfil the Community Outcomes and Strategic Directions (see chart below).



The Metropolitan Sports Facilities Plan sits under the Physical Recreation and Sport Strategy (2002), identifying the rationale for Council’s provision of sporting and recreational opportunities in Christchurch. A review undertaken in 2006 endorsed the Strategy’s relevance in regard to sports facility provision.

The Metropolitan Sports Facilities Plan is directly aligned to, and will contribute to the implementation of other Council policies and strategies. The following provide a strong context for the plan.

**4.1.1. Recreation and Sport Policy 1996**

The key statements from the Recreation and Sport Policy are not in order of importance and must be read as a whole.<sup>5</sup>

<sup>5</sup> Recreation and Sport Policy (1996) Beliefs and Values section - see Policy Register at [www.ccc.govt.nz](http://www.ccc.govt.nz)

1. That participation in recreation and sport makes a significant contribution to the health, well-being and quality of life of the people of Christchurch.
2. That recreation and sport makes a positive contribution to the local economy.
3. That all people have the right to participate in recreation and sport regardless of age, ability, discretionary income, ethnicity, gender and geographical location.
4. That the Council must manage its limited recreation and sport resources, including human, financial and physical assets, in a manner that ensures equity, efficiency and effectiveness.

#### **4.1.2. Physical Recreation and Sport Strategy 2002**

The plan provides for the development of sports facilities, based on key statements reflecting the rationale for provision, as adopted by Council in the 2002 Physical Recreation and Sport Strategy. These key statements underpinned the planning and decision-making processes undertaken during the development of the draft Metropolitan Sports Facilities Plan.

The vision of the Physical Recreation and Sport Strategy 2002 is:<sup>6</sup>

**Moving together to provide a city where people participate and enjoy, and have the opportunity to perform and excel in physical recreation and sport.**

The relevant goal, objective and strategies are:<sup>7</sup>

##### **Goal One- facilities and environment**

*A safe physical environment that encourages participation in recreation and sport.*

**Objective 1.1 Recreation and sport facilities (built and open space) are well used and needs are clearly prioritised.**

##### Strategy

1.1.1 Use existing facilities to meet outstanding needs before the development of new facilities is considered.

1.1.2 Manage, maintain and redevelop existing facilities (and open space) to meet the current and future participation expectations and trends wherever possible.

1.1.3 Establish and agree the City's priorities for new facilities through a transparent process within realistic financial constraints.

1.1.4 Consider the physical recreation and sport facility and open space needs in the growth and development of the City.

---

<sup>6</sup> Physical Recreation and Sport Strategy (2002) p. 6

<sup>7</sup> Physical Recreation and Sport Strategy (2002) p. 7

#### **4.1.3. Recreation and Sports Facilities Strategy (2003)**

The Recreation and Sports Facilities Strategy (2003) identified a number of metropolitan sport facility developments based on a needs analysis completed in 2003. The Metropolitan Sports Facilities Plan updates and replaces priorities identified in the 2003 Strategy.

#### **4.1.4. Events Strategy 2007**

The Events Strategy adopted by Council in December 2006 identified Christchurch as having a proud tradition of attracting national and international sports events to the city. The Strategy lists under positive features that Christchurch has some of the best venues in the country.<sup>8</sup> The Events Strategy did not address development of metropolitan sport facilities to support events.<sup>9</sup>

#### **4.1.5. Strengthening Communities Strategy 2007**

The Strengthening Communities Strategy is a framework to guide the Council's work with community organisations, which provide a range of services to help develop strong communities. The Strategy recognises the development of community facilities in Christchurch has been sporadic and ad hoc, and as a result, the quality and distribution of these facilities, and the needs they meet, vary widely. There are eight goals in the Strategy and include:

- **Goal 5** Ensure that communities have access to community facilities that meet their needs.
- **Goal 6** Increase participation in community recreation and sport programmes and events.

#### **4.1.6. Urban Development Strategy**

The Metropolitan Sports Facilities Plan has been developed during evolution of the Urban Development Strategy. Research indicates there is limited potential for development contributions to be a significant source of capital for metropolitan facility development because the majority of users are from within the current resident population of the city. However, there is potential for metropolitan facilities to be located in growth areas where these facilities can provide for day-to-day local use as well as metropolitan functions. This type of dual use facility could attract development contributions for the local provision/use component.

#### **4.1.7. QE II Concept Plan 2005**

The Metropolitan Sports Facilities Plan aligns with the QEII Concept Plan 2005. This Plan identified a vision for and development of QEII which recognises the international significance of the facility for high-performance sport, as well as community sport and recreation.

<sup>8</sup> Christchurch Events Strategy 2007-2017 section 1.4

<sup>9</sup> The Christchurch Events Strategy under section 4 Resources and Capability identified Council's role in provision and management of outdoor and indoor venues such as QEII Park and VBASE with AMI Stadium and Westpac Arena

Consistency and alignment with concurrent planning projects has been considered throughout the development of this Plan, notably the Open Space Strategy, Community Facilities Plan, Library Facilities Plan, Belfast Area Plan and the South West Area Plan.

### **Working in a changing environment**

The Draft Plan has a planning horizon of 20 years with regular reviews timed for the LTCCP planning process. This will accommodate for any changes in the condition of assets, sport preferences and trends and the needs of sport within the city and surrounding areas.

### **A framework for decision making**

The plan is a long-term framework to guide and inform Council's decision-making processes during the next 20 years. Council will make decisions on specific actions listed in the Plan based on a detailed business case developed at the time (and during the LTCCP process), not automatically as a result of adopting this Plan.

### **Good fit with transport**

Metropolitan facilities, by their definition, have city-wide catchments. These facilities often host events, in some cases involving thousands of people and in many cases are key facilities for day-to-day use by a smaller number of people. It is essential metropolitan facilities are accessible to the city's transport network for the efficient movement of people to and from venues. There also needs to be good access to and from the site and relatively direct access to major arterial roads. Sufficient parking provision on or close to the facility is also an important factor to consider. Increasing costs of liquid fuels, coupled with the drive for a more environmentally friendly city, means a good fit with public transport and the cycleway network will also be critical in the future to ensure sustainable use of facilities. These factors all contribute to the suitability of a site to potential users.

Christchurch is fortunate to have several large sites within the city which have a good fit with the transport network, thereby providing plenty of options for further development.

### **Land banking and land costs**

The plan has a long timeframe, therefore proposing a staged development of metropolitan facilities. As a result, some well located sites may need to be land banked by Council for more than 10 or possibly 20 years to ensure future availability for the development of a metropolitan sports facility. Land costs have not been included in the plan because Council owned sites and those owned by potential partners may be able to be accessed at minimal cost. These have been identified in the initial high level investigation for this plan. However, if these sites become unavailable because of alternative higher priority use or are found to be unsuitable, additional capital will be needed to purchase land. The cost could be substantial as well located sites will have high market value.

Some sports have been pressured to relocate because of residential development. Council needs to support and protect sports and their facilities from this pressure through better planning and the use of exclusion zones. This should be more cost efficient than purchasing additional land which is not likely to be as well located for users as current sites.

### **Capital investment**

Christchurch has made significant investments over past generations to establish its network of metropolitan facilities, capable of hosting national and international events. Many of these facilities were established for the 1974 Commonwealth Games and have subsequently been modernised. It is important to note the city has limited resources and must be selective with investment in new facilities and in maintaining current facilities to contemporary quality standards.

### **Existing built value**

Christchurch has a suite of metropolitan sports facilities. The value of each major venue varies depending on the scale, its age and whether it is "fit for purpose" in meeting current and foreseeable sport requirements.

Council needs to firstly ensure it maximises its use of existing assets before investing in new facilities.

The sport sector is dynamic, the scale and type of facilities is continually changing. As a result, the value of an asset can be quickly reduced if the facility is not maintained to ensure it meets current sport needs. The challenge for Council is to enhance the value of the existing suite of venues; options include modernising/refurbishing, converting to alternative uses and complete renewal or replacement.

It is fortunate many of these assets are located on large sites, providing flexibility and the co-location of additional developments to fill gaps in provision.

## **5. Criteria for prioritising proposed sports facility developments**

Criteria to determine the priority of proposed sports facility developments were developed by Council in order to ensure:

- A robust, transparent and fair process; and
- Alignment with the Council's strategy and policy governing recreation and sport.

The criteria were formally adopted by Council in August 2007.

The criteria in no order of importance are:

1. The numbers of participants affected now and reliably predicted into the future.
2. The degree to which current demand/need exceeds current facility provision.
3. The degree to which city-wide planning processes are accommodated in respect of:
  - Council processes, e.g. UDS and Area Plans.
  - Other providers processes, e.g. Vbase and sports organisations.
  - Major funding organisations processes, e.g. SPARC and Community Trusts.
4. The degree to which proposed developments enhance Christchurch's ability to host major events consistent with Council's Events Strategy.

5. The degree to which proposed developments enhance Christchurch as a centre of sporting excellence.
6. The degree to which capital and operational costs can be met by others.
7. The degree to which proposed developments use/positively impact/complement (rather than compete with) existing facilities or sporting hubs.
8. The degree to which proposed developments are sustainable and reflect best industry practice, including but not limited to:
  - Multi-use facilities.
  - Hubbing.
  - All-weather facilities.
  - Ability to change offerings in line with changing sporting trends.
9. The degree to which the proposed development is supported by reliable and verifiable information.
10. The degree to which the needs identified can only be met through additional facility provision (i.e. the needs cannot be met without additional facility provision).
11. Degree to which the partner organisation(s) involved have the infra-structural capability to sustain and manage the facility.

## **6. Situational Analysis**

---

### **Key issues**

Key issues identified in 2007 for consideration in developing the plan included:

- Changing city demographics.
- Changing social demands and expectations of sports facilities.
- Changing trends, needs and expectations in the nature of provision of major sporting facilities.
- Changing demands in provision of facilities for national and international events (surfaces, seating, lighting, court run-off, etc).
- Capacity and physical attributes of existing sports facilities.
- Capacity to host national and international events in target sports.
- Sustainability of facilities.
- All-weather surfaces with lighting to optimise participation.
- Multi-purpose, high-use and high-occupancy facilities.
- Legacy planning – optimisation of the life-span of the asset.

### **Sports that are important to city residents**

The process of identifying sports important to city residents is based on current and past participation and/or spectator numbers. It includes trends that identify other sports with

potential for competition success at the national level and/or significant potential for growth in their participation numbers. The Plan identifies critical gaps in metropolitan facility provision for these sports and options to cater for their needs.

Sports have supplied membership statistics for the past 15 years (see detailed tables in appendix). In 2006, membership of Canterbury sports organisations, who supplied data, was just under 185,000. Most sports display a stable membership base across the 15-year period. Facility provision appears to have had a direct influence on many but not all sport memberships:

- Gymnastics and basketball have experienced strong growth, the result of expanded facility capacity in the city.
- Football (soccer) and rugby (in later years) have seen strong expansion through use of fields throughout the city, including those vacated by hockey when it converted to artificial turfs.
- Cricket has had strong growth supported by the large number of fields available in the city.
- Rowing has experienced strong growth, despite the limited capacity at Kerr's Reach.
- Netball has a large, stable membership. However, a lack of growth has been attributed by the sporting code to the shortage of outdoor and indoor court capacity. The decision by netball not to use community courts has forced the sport to limit team numbers in some grades and not promote the sport.
- Rugby league has experienced a decline in player numbers since the mid 1990s but is now attracting greater numbers with a new club and changes to its competition.

### **Fit with regional, national and international sport needs**

The facilities within the Plan will provide venues for regional, national and international events. The needs of international sport organisations, in most cases, are explicitly specified regarding the functional performance requirements of the host venue. The needs of national sport organisations are less clear. New Zealand lacks a national planning framework for facilities for the sport sector. SPARC is in the early stages of data collection to identify the current supply of regional, national and international level facilities in New Zealand as a precursor to developing some form of policy, strategy or planning framework. Few national sports organisations have developed any definitive facility policy, plans or strategy regarding the number or distribution of venues for national events. However, most have developed policy on the allocation of events. Several regional sports organisations have completed plans or strategies regarding their facility needs, including metropolitan facilities. With Christchurch being by far the largest urban area in the Canterbury region, a metropolitan facility by default serves as a regional facility.

### **Good fit between events and supply of metropolitan sports facilities**

Providing venues that comply with the requirements of national and international sporting codes is increasingly arduous. These requirements change as the sports react to new quality standards offered by the latest facilities and new technologies or look to change the format of events to make them more attractive for spectators and television audiences. The Plan seeks to be realistic in providing for peak capability and capacity for events as many will only be occasionally hosted by the city because of national and international sports organisations rotation and bid processes. In addition, the plan seeks to provide agility to respond to and

compete for events by having capability within the network, with both outdoor and indoor arenas, to host events of varying size.

Currently, gaps in the network mean some high-profile sporting events cannot be hosted in the City, such as Netball New Zealand premier and age group championships. This has been the case for more than a decade. While AMI Stadium has the capability to host test cricket, New Zealand Cricket is seeking a smaller arena because the Stadium is too big for current attendances to create the desired atmosphere for televised tests.

### **Emergence of franchised sport**

High-performance sport is increasingly being operated through the franchise model and is heavily reliant on television coverage to make it financially viable through sponsorship revenues. Providing entertaining “live theatre” drives the franchises to seek appropriately sized venues to achieve the visual impact and high-energy feeling of a “full house”. Sports organisations and television want to avoid views of empty seats or embankments; oversized venues in relation to the drawing power of the event. This is generating demand for a range of indoor and outdoor arenas with varying sizes in the city. It is hard to predict what the next franchise will be and when this will happen but having the agility to respond promptly to the next opportunity is important.

Currently, Christchurch has large spectator capacity arenas (AMI Stadium and Westpac Arena) and several small spectator capacity arenas (Cowles Stadium, Pioneer Stadium, English Park, Rugby League Park and Rugby Park) but lacks mid-sized indoor and outdoor spectator arenas.

### **Demographic data**

The city’s demographics and location of different communities within the city are not major factors because of the city-wide catchment of metropolitan sports facilities. However, several trends will have an impact on demand for metropolitan sports facilities:

- The city’s population – expected to grow slowly.
- An ageing population – the proportion of children is expected to decline in the long term and the elderly population to grow.
- Ethnicity – will continue to be dominated by European but the population of Asian ethnicity is expected to continue to grow.

### **Societal trends**

Societal trends have been comprehensively described in the Physical Recreation and Sport Strategy and validated in the 2006 review. Societal trends of particular relevance to metropolitan sports facilities are:

- Consumerism impacting on sport through increasing popularity of pay-for-play sport and pay-to-watch sport events as a ‘live theatre’ entertainment option.
- Huge uptake of technology providing a means to watch sport from the comfort of your home or a hospitality venue away from the live venue.
- Preferences, because of the comfort value, to play indoors and on better playing surfaces at all levels of sport.

- Casualisation of work and seven-day-a-week trading changing demand patterns of when people wish to participate and watch sport and reduction in availability of volunteers when needed to lead sport activity.
- People are more sedentary, being spectators rather than participants in sport.

### **Sports facility provision trends**

- Most sports clubs and regional sports bodies are moving away from owning their own facilities because of the associated costs and liabilities.
- Sports are becoming increasingly ineffective as property managers of their facilities, in part because of the burden of compliance with legislative requirements and the erosion of traditional revenues generated from their bar facilities and grants which underpinned the provision of their facilities.
- The increasing trend whereby sports organisations who lease facilities do not provide sufficient ongoing maintenance. This often results in large remedial retrospective maintenance costs for local authorities.
- A continuing role for most local authorities to be the prime providers of community facilities.
- A drive to seek joint ventures and partnerships between local authorities, funding agencies and facility providers.
- A drive to cluster facilities (otherwise known as hubs) to share ancillary facilities such as parking and in some cases services such as a reception for two or more facilities to reduce operating costs.
- Spectator demand for major venues which provide comfort, sophistication and ease of access.
- Sports code demand for greater access to facilities because of longer seasons – approaching 10 months in duration – particularly for professional and semi-professional sports. This precludes the traditional sharing by many “summer” and “winter” codes.
- Dynamic and ever-increasing standards and expectations of sports participants and organisations regarding sports facilities. These drive adoption of new technology and often up scaling of facilities to remain compliant with requirements and competitive with alternative venues.
- Demand from local authorities for the development of multi-purpose event and participation centres to provide opportunities for social and cultural activities, concerts, exhibitions, trade fairs and other community events, as well as high-performance and community sport. Attempts at integrating, within one building envelope, the design needs of events and community sport have achieved mixed success and commonly requires significant compromises in access for community sport. The development of such ‘compromise facilities’ is usually driven by the economic needs of a local authority to build and operate an affordable single facility.
- Emergence of franchise sport requiring an appropriate size and quality of facility to create attractive ‘live theatre’ for fans and a high financial yield “home” facility to sustain the franchise.
- Increasing competition for large events from other cities through improved facilities such as indoor court facility provision (e.g. Invercargill 11-court complex, Dunedin 21-court complex, Palmerston North 12-court complex, Wellington planned 12-court centre, and Waitakere six-court centre).

### Asset management planning

Asset management plans for metropolitan sports facilities are being completed to inform the 2009-2019 LTCCP. Provision for asset renewals and major refurbishments will be included in the 2009-2019 LTCCP and do not form part of this plan.

### High performance sport centre at QEII Park

Council made a formal commitment in June 2007 to support the development of a high-performance centre for the city and wider region, based at QEII Park. This commitment included long-term provision of office and specialist/technical space. The commitment reflects Council's commitment in the Physical Recreation and Sport Strategy (2002) and the QEII Concept Plan (2005).

### Shape and condition of current network

A map of the current metropolitan sport facilities is in the appendix. It shows a wide range of sports facilities spread throughout the city. These reflect the incremental and mostly one-off approach, rather than coordinated development, of metropolitan facilities during the past 50 years. The following table outlines the Council and non-Council owned metropolitan sports facilities and their assessed condition where information was available in 2007.

**Table 1: Condition of Council and non-Council owned metropolitan sports facilities**

Facility	Condition Description - fit for purpose	Age of Facility
Alpine Ice Sports Centre	Fit for purpose.	Built in 1985.
Canterbury Indoor Bowls Hall	Fit for purpose	Various.
Carrs Roadway Kart Raceway	Fit for purpose. Track needs re-surfacing within three to five years.	The original 400m sealed track was built in 1964 but has undergone several changes, taking the current track length to 620m. The club rooms were built in 1974 and extended in the early 1980s.
Christchurch Netball Centre	Building fit for purpose. Courts need resurfacing to continue to be fit for purpose.	Courts – the lease for the grounds was signed in 1977. Centre built in the 1990's.
Cowles Stadium	Needs refurbishment to continue to be fit for purpose.	Built in 1961.
Cuthberts Green (Smokefree Ballpark)	Fit for purpose.	Built in 1985.
Denton Park Velodrome	Marginally fit for purpose. Outdoor cycling track fit for training. Lifespan estimated at 10 years.	Built for the 1974 Commonwealth Games, the track was converted from asphalt to concrete in 1994.

Facility	Condition Description - fit for purpose	Age of Facility
English Park	Building fit for purpose. Field needs upgrade because of insufficient drainage and compaction problems.	Upgraded in 2002.
Fencing Centre	Fit for purpose.	The original building is at least 20 years old. Refitted for fencing in about 2003.
Fendalton Bowling Club (Bowls Canterbury)	Fit for purpose.	Club formed in 1942.
Kerr's Reach	Buildings and infrastructure fit for purpose. Waterway marginally fit for purpose – issues with silting and weed. Launch pontoons installed in 2007.	Various.
McLean's Island Shooting	Fit for purpose.	Established for the 1974 Commonwealth Games.
National Equestrian Centre	Fit for purpose.	20 years old.
Pioneer Sports Stadium	Fit for purpose.	Built in 1978.
Porritt Park	Fit for purpose.	Pavilion built for the 1974 Commonwealth Games and upgraded 2004. No. 1 water turf replaced sand turf in 1994. No.2 water turf completed in 2003.
QEII Park	Fit for purpose. Well maintained.	Built for Games in 1974.
Ruapuna International Raceway	Fit for purpose. Track in need of resurfacing.	Various. Original usage dates back many years. Additional buildings and associated facilities have a range of construction dates.
Rugby League Park	Not fit for purpose. Grandstand No. 2 condemned and major maintenance work needed on all infrastructure.	30-plus years old facility.
Rugby Park	Fit for purpose but under review.	Various.
Skellerup Badminton Hall	Fit for purpose. A leaking roof and the asbestos lining causing concern.	At least 35 years old.
Sockburn Regional Squash Centre	Fit for purpose.	Built in 1980 and converted in 2008.
Table Tennis Canterbury Stadium	Fit for purpose.	Date of building shell unknown; fitout about 10 to 15 years ago.
Westpac Arena	Fit for purpose. Well maintained.	Built in 1998.

Facility	Condition Description - fit for purpose	Age of Facility
Wilding Park Tennis - Indoor Centre	Fit for purpose.	Various.
Woodford Glen Speedway	Fit for purpose. Outside CCC boundary areas.	Woodford Glen Speedway opened in 1974.

The shape of the current network of event stadiums (and gaps) is outlined in the table below.

**Table 2: Current network of metropolitan event stadiums**

Size	Indoor event arenas	Outdoor event arenas
Large	Westpac Arena (6000+ seats).	AMI Stadium (up to 45,000 seats in arena).
Medium	No provision.	QEII Main Stadium (14,000 seats including 5000 covered, 18,000 total spectators in arena). Rugby League Park (4120 seats, 7200 total in arena).
Small	Small-size – Cowles Stadium (1200 seats).	English Park (550 seats, 2000 total in arena) Rugby Park (about 1000 seats, 2000 total in arena)

For the purposes of this plan, issues arising from the condition of Council-owned assets include:

- Cowles Stadium – the need to refurbish and upgrade the facility.
- Poor condition of Rugby League Park.
- The ageing outdoor cycling track at Denton Park – estimated to have about 10 years remaining life as a training and local competition facility.
- The poor condition of the pitch at English Park because of poor drainage and compaction.
- Suitability of current layout at QEII Village Green for test cricket.

### Large sites to cluster metropolitan sports facilities

Christchurch is fortunate to have several large sites at which to cluster metropolitan sports facilities and share ancillary facilities, such as parking, for major events. The two critical sites identified for future development are QEII and Addington Raceway. Council policy regarding protection and enhancement of Hagley Park as the green heart of the city means clustering metropolitan sports facilities is not tenable.<sup>10</sup> There are other sites with less built value that could be developed into major clusters in the future, such as Wigram (as the city grows west and south-west).

QEII currently has the most extensive cluster of sports facilities on the one site in New Zealand. QEII is the high performance sport centre for the region and is being used by an increasing number of sports. It has additional adjoining Council-owned land (currently occupied by a golf driving range and golf course) to allow for the future expansion of the number of facilities and sports using the site. It is on the fringe of the city but has good arterial roading network links and a limited public transport service.

<sup>10</sup> Refer to Hagley park Management Plan 2007 for more detail

Many sports have identified Addington Raceway as a key site because of its central location, the significant built value of Westpac Arena and being well serviced by public transport (at the junction of the Orbiter and other bus routes). It is the preferred future location of the metropolitan indoor and outdoor court complex for netball. In excess of 10,000 netball players and supporters will use the complex each week during the season.

**Priorities from Recreation and Sports Facilities Strategy (2003)**

The major metropolitan sports facility priorities as at 2003 as identified in the Sport Facilities Strategy (2003) are listed below.

**Table 3: Priorities from Sports Facilities Strategy (2003)**

Activity	Rating	Need
Flat Water Sports	High	New premier facility. Overuse and maintenance issues at Kerr's Reach.
Cycle Velodrome	Medium	Modern facility to replace worn-out facility at Denton Park.
Ice Arena	Medium	New facility to meet excess demand.
Marina/ boating	Medium	Marina and boating facilities in Lyttelton Harbour for public access.
Netball - indoor	Medium	Indoor facility for events, competitions and training.
Shooting	Medium	Improvements to comply with safety requirements.
Basketball	Low	Three-court facility to accommodate growth in competitions and events.
Bowls	Low	Covered greens.
Equestrian Centre	Low	Indoor facility – McLean's Island approaching overuse.
Golf	Low	Junior golf facility to accommodate growth.
Gymnastics	Low	Outgrown existing facility.
In Line Hockey	Low	Current facility run down and inadequate.
AMI Stadium	Low	Redevelopment of eastern stands.
Kart Racing	Low	Need to relocate due to zoning changes.
Rugby League Park	Low	Grandstand redevelopment.

Several of the issues have been addressed since 2003 including:

- The indoor ice rink where Council made an offer of support and a site at QEII that the development trust has been unable to take up.
- Shooting improvements have now been completed at the McLean's Island site.
- Sports Floor courts developed at QEII are now over-subscribed.
- The marina has been addressed by Council through a partnership development in Lyttelton Harbour.
- AMI Stadium eastern stand redevelopment.

The balance of the issues listed above are addressed in this plan.

**7. Key issues of sport in 2008**

---

Extensive consultation took place in late 2007 with sports organisations. Key issues identified by these sports are summarised below. These were the views of the various sporting codes and, where appropriate, they have informed development of the plan:

- There is a lack of an affordable and appropriate sized indoor facility for basketball and netball franchises to host home games. Westpac Arena is heavily booked, expensive to hire and franchises struggle to confirm dates before other bookings are confirmed, Spectator capacity at Cowles Stadium is too small for many franchise games.
- The absence of an indoor facility, complying with New Zealand Netball requirements for championship and tournament events has precluded Christchurch from hosting these events for more than 10 years. The requirement is for a large area of indoor courts and seating for about 3000.
- A deficit in the number of indoor courts to meet growing demand as basketball grows (player numbers have doubled in the past 15 years) and as netball moves more of its game indoors to be competitive and protect high-performance players from over-use injuries. Basketball and netball report available indoor facilities, including the QEII Sports Floor, are at full capacity during peak times.
- The poor surface condition of the outdoor netball courts at Hagley Park is a critical issue for netball. Inadequate parking is also a major on-going concern.
- The playing field at English Park is unable to cope with a full programme of games because of its poor condition. This has an impact on football's (soccer) ability to use the ground effectively.
- The high performance sport centre based on the cluster of facilities at QEII Park is seen as a major competitive advantage for sport in Canterbury (and nationally).
- Football (soccer) and rugby are currently reviewing their high performance and administration infrastructure. Both sports are seeking greater efficiency and wanting to enhance competitiveness compared with other regions.
- Technological advances means all-weather surfaces for training and some competition play are gaining favour with sports other than hockey. These surfaces are attractive for sports, such as rugby and football (soccer), because intensive use is possible, especially as part of a high-performance centre serving a city-wide, regional and national catchment.
- There is the need for a range of outdoor stadiums for use by sports, such as cricket, athletics, rugby, football (soccer) and rugby league, to play at appropriate sized and affordable venues. A range of outdoor stadiums provides options when clashes occur because of overlapping sports seasons. Sporting codes identified opportunities for the Village Green, QEII Main Stadium, and QEII No. 2 Ground to be configured to meet these needs.
- There is a need for an ICC-compliant test cricket venue that also meets New Zealand Cricket's requirements.
- The grandstands at Rugby League Park need to be replaced or rugby league will have to shift to an alternative stadium. Developing a new outdoor stadium at Canterbury Park, as an alternative location, was suggested by rugby league because of its proximity to Rugby League Park.
- The main concern of cycling is to retain a training and local competition facility. Cycling is not seeking development of an indoor velodrome because of the high capital cost. Cycling, in conjunction with Council, wants to plan for an alternative outdoor track facility as Denton Park's track needs replacement within 10 years. The track could possibly be part of a larger cycling park development.
- The development of rowing and other flat-water sports is inhibited because of the constraints at Kerr's Reach (silting and weed build-up reducing navigable water time). A group is now looking for a solution at a new location (a new lake in Henderson's Basin).
- Motorsport facilities are under threat from residential growth close to their site at Ruapuna. Motorsport is seeking protection of Ruapuna Raceway as a motorsport park. There is potential for consolidation of other motorsport in the future on the Ruapuna

site. Of immediate concern is the renewal of the hard-surface track. Motorsport has also identified the need to upgrade ancillary facilities at Ruapuna.

- There has been limited progress by ice sports to develop a new ice rink at QEII Park since Council gave approval for this option in 2004.
- Various shooting sports have made good progress with safety-related developments at McLean's Island. Most developments are now complete or nearing completion.
- Many sports reported satisfaction with their current metropolitan facilities, saying these were adequate for their current needs. However, most had concerns with the costs of maintaining these facilities as they aged.

## **8. The plan for the provision of metropolitan sports facilities**

---

The plan allows Council to prioritise options for metropolitan sports facility developments during the next 20 years. Project timeframes and Council's financial contribution to any of the identified projects will be determined through the 2009-2019 LTCCP process.

### **Key issues**

Consideration of the research, stakeholder consultation and elected member feedback has identified the need for the following;

- Indoor sports facility provision – new mid-sized indoor arena, as well as an upgrade of Cowles Stadium.
- Outdoor sports facility provision – reconfiguration of existing outdoor stadiums and the retirement of Rugby League Park.
- Flat-water facility provision – new lake option.
- Ruapuna Raceway – renewal of the track and securing on-going functionality.
- Functionality of existing Council metropolitan sports facilities – enhance some existing facilities and retire others.
- Additional provision of all-weather/artificial sports surfaces – developments using new playing surface technology.
- Maintaining current levels of service at most existing Council metropolitan sports facilities.
- Lease agreements – proactively review.

### **Key attributes of the provision plan:**

#### **Maximum efficiency and effectiveness of city-wide network of metropolitan sports facilities**

Future developments will continue to focus on ensuring best use and enhancement of the city's current network of metropolitan sports facilities. And, over time, current and future gaps in the geographic distribution of facilities will be filled by prioritised developments.<sup>11</sup> There

---

<sup>11</sup> Renewal and refurbishment based on the asset management plan currently under development.

may be opportunities to better optimise the value of some Council-owned metropolitan sports facilities by exploring alternative or shared use.

Facilities will be designed to provide functionality and be flexible to meet future changing needs of various sporting codes, at the same time being able to meet Council's requirements to be quality facilities, which are environmentally friendly, energy efficient and low maintenance.

### **Optimised partnership opportunities with other agencies and/or services**

All future developments of metropolitan sports facilities will give priority to reducing Council's capital or land use, while still delivering the required facilities. Options will need to be assessed as part of the business case for each development, with particular reference to long-term benefit and meeting proven community need. While remaining alert for any opportunity, Council should not be tempted to enter into a partnership merely because the possibility of one exists. Viable partnership options currently include:

- Development of a major indoor sport facility at Addington Raceway site with the Metropolitan Trotting Club and Vbase.
- Development of a lake for a flat-water sports course (potential partners to be identified).
- Further development of the high performance sport centre at QEII with New Zealand Academy of Sport (South Island) and SPARC.
- Development of all-weather, artificial surfaces with schools and other land owners.

### **Proposed solutions**

The following proposed solutions will guide and inform Council's decision-making to ensure provision of the most effective city-wide network of metropolitan sports facilities within available resources. These are, in no particular order or priority:

#### **Indoor sports provision**

Christchurch City has a deficit of large multi-purpose, multi-court sports space to meet functional and financial requirements for franchise sports and medium-sized sports events, and to meet demands during peak times for participation sports.

The below solutions will, along with the existing Westpac Arena, provide the city with a range of indoor sports facilities. These will meet sporting needs for indoor participation space; franchise sports events of all sizes and most city-wide, national and international sporting events.

##### ***8.1.1. Develop a new multi-purpose indoor sports facility***

The major women's sport in the city (netball) has been unable to host a national championship or tournament event in the city for more than a decade. This is due to the lack of a three-court indoor facility with the court dimensions, sprung wooden sports floor and spectator seating that meets the event requirements of Netball New Zealand. During this time, there has been a proliferation of large indoor facilities elsewhere in the country that comply with Netball New Zealand requirements.

Council would lead the development of a new multi-purpose indoor sports facility. The facility will be sufficiently large enough to cater for the needs of franchise sports teams (e.g. Canterbury Rams, Scope Tactix Netball), meet standards for national and international events and provide sufficient space and time allocation for significant sports usage by the general community sports sector.

It is anticipated such a facility would contain at least eight indoor netball/basketball courts and the capacity to seat at least 3000 people in a flexible seating arrangement. It is important to factor in the growing demands on such facilities and provide additional space and capacity for future expansion.

The provision of additional indoor court space will not only provide space for existing demand and meet the changing needs of participants but will free up space at existing venues, such as Pioneer Stadium, QEII and Cowles Stadium to meet the growing needs of the existing users at these venues.

Options to provide this level of facility at existing venues (Cowles Stadium, QEII or Pioneer Stadium) were investigated but not considered feasible because it would not physically fit or would create more problems due to the displacement of existing usage at these facilities.

It is proposed that this new facility be located adjacent to Westpac Arena at Addington for the following reasons:

- Availability of land for indoor and outdoor courts in the one location. This is a unique opportunity that may not be available in the future.
- Proximity to major transport routes, the city centre and other entertainment facilities.
- Will provide additional non-sports space options for Westpac Arena when needed.
- Westpac Arena will provide additional sports space options for the new arena when needed.
- Opportunity to use the existing infrastructure already in place at the Westpac Arena and Addington Raceway, such as e.g. parking, utilities, hospitality infrastructure, office space, etc to reduce e construction and operating costs.

While the space will primarily focus on sporting provision, the opportunity to provide additional space for events at Westpac Arena, and vice versa, will mean the two facilities will complement each other.

A full feasibility study will be undertaken to further develop this project.

### **8.1.2. Upgrade Cowles Stadium**

Cowles Stadium will receive an upgrade to improve services and functionality.

Improvements will include seating, changing areas, event infrastructure (e.g. scoreboards and benches), television and media capability, lighting, sound, ventilation, and entrance, egress and general appearance. This upgrade will not include the addition of any further floor space.

The seating upgrade will bring the stadium to a capacity of about 1500. This will enable the city to meet the need for a smaller, cost-effective stadium for participation sports and smaller events or competitions.

**8.1.3. Investigate the opportunity to locate metropolitan facilities for other indoor sports within the Wigram Hangars or at other large indoor spaces within the city as opportunities arise**

There are several sports, such as in-line hockey, that need a specialist surface but it is difficult to combine with other users. Therefore, a dedicated facility is needed. Often these are sports with a small participation base and limited ability to raise capital. Conversion of an existing building is a potential solution.

Ngai Tahu Property Limited, as landowners, is implementing plans for further residential development of the land adjacent to the Wigram Aerodrome. As part of this development, an opportunity exists for the long-term usage of the existing hangars at the aerodrome.

Council will investigate what practical opportunities exist for the use of these hangars by sports for metropolitan or higher-level purposes.

Other opportunities to provide solutions for indoor sports provision will be investigated and considered on their merits, as and when they arise, in similar fashion to the innovative Edgar Centre conversion of a former wool store in Dunedin.

**Outdoor sports provision**

**8.1.4. Reconfigure components of QEII Park**

Optimising the use of QEII Park as a metropolitan sports facility is central to the success of the outdoor sports provision component of the plan. The successful implementation of the QEII Concept Plan 2005 requires decisions to be made on the configuration of QEII Park. Areas that come under the scope of this plan include the Village Green, Main Stadium, QEII No. 2 Ground and artificial surfaces.

**Village Green**

The Village Green will be further developed to meet the minimum requirement to become ICC compliant for test cricket. The Village Green will continue to be the home for domestic cricket, test matches and some lower level one-day matches for the city. Higher profile one-day and 20/20 matches attracting larger crowds will continue to be played at AMI Stadium. This plan also allows the provision for cricket training and its administration infrastructure at QEII Park.

Both the above options rely on the successful conversion of the Village Green area to a test cricket venue. Initial evaluation indicates this is possible. Should any unforeseen difficulty preclude this from happening, an alternative option to support the Bert Sutcliffe Oval at Lincoln University to host Christchurch-allocated test matches would be investigated.

**Investigate provision of artificial surfaces at QEII Park**

The artificial surfaces will cater for intensive use for high-performance training and participation purposes.

## **QEII Main Stadium**

QEII Main Stadium currently has capacity for 14,000 seated (5000 covered) and 18,000 spectators in total. The primary use is for athletics, which with the exception of a major international event, such as the Commonwealth Games, does not need this spectator capacity. The existing layout with the athletics track does not provide the best configuration for other usage (e.g. football, rugby, rugby league or cricket).

In 2011, Christchurch will host the International Paralympics Committee (IPC) Athletics World Championships. The event will be based at QEII Park and require the development of a warm-up track. The warm-up track is proposed to be located on QEII No. 2 Ground.

Two options have been identified to use the opportunity presented by hosting the IPC Athletics World Championships to reconfigure facilities at the Park.

### **Option 1: Main stadium to stay in current format**

The main stadium will stay in the current format following the IPC Athletics World Championships and the pitch will continue to be available for higher level games of football, rugby and rugby league. It will also continue to be used for athletics.

The sports field space to the north of the main stadium, commonly referred to as the QEII No. 2 Ground, will continue to be developed according to the needs of sport and in accordance with the Council's commitment to the High Performance Sport hub/cluster already developing at QEII. This may include the installation of artificial playing surfaces.

The temporary warm-up track would either be removed post-IPC Athletics or incorporated into the future development of the No. 2 ground development.

### **Option 2: Main stadium conversion**

Following the IPC Athletics event in 2011, the existing track in the main stadium will be removed and the stadium reconfigured to create more space to better accommodate grass-based "rectangular" field sports such as football, rugby and rugby league that require a stadium of around 14,000 seated (5000 covered) to 18,000 capacity.

The warm-up track located on the QEII No. 2 Ground will be brought up to competition standard and become the city's main athletics venue. As for option 1, there will also be the development of separate artificial playing and training surfaces in close proximity at QEII.

#### **8.1.5. Ruapuna raceway**

The Canterbury Car Club lease land from Council and operate the Powerbuilt Tools Raceway at Ruapuna Park. The Park also houses the Christchurch Speedway Association speedway track.

The existing hard surface track is in need of upgrade to continue to meet international motorsport regulations and plans are in place to develop the existing garaging and hospitality facilities at the venue. Council has previously supported these plans through its grant funding schemes, and together with the additional fundraising being undertaken by the clubs, the future development of the facilities at the Park are well in hand.

The major issue facing motor racing at Ruapuna is the increasing pressure on noise output as a result of the additional residential development around the Park in recent years.

Council's Strategy and Planning Group are currently working with the Car Club and residents to investigate options to resolve this issue, therefore no further solutions are proposed within the Metropolitan Sports Facilities Plan.

#### **8.1.6. Flat-water facility provision**

The provision of an international competition specification rowing course in close proximity to the city was ranked as the number one priority within the 2003 Sports Facility Strategy.

The main issue facing the provision of this facility is the location of a suitable site within close proximity of the city. Since the development of the 2003 Sports Facility Strategy, significant investigative work has been done on finding an appropriate site.

In recent months, Council has been approached with the possibility of a location in the south west of the city, incorporating the existing water retention area known as Henderson's Basin. The Council has requested the potential for this area as a suitable site for a flat-water facility be investigated. Council's Strategy and Planning Group are currently working with the group undertaking this work. Investigations are unlikely to be completed to inform the 2009-2019 LTCCP process.

Given the potentially long lead time in the provision of a purpose-built flat-water facility, it is proposed Council continues to provide further incremental enhancements at Kerr's Reach to continue to improve conditions for river users and increase safety on the river.

Council will increase levels of service in the areas of water usability, silt mitigation, weed control, river safety, education, parking, lighting, access, signage and storage, where needed.

#### **8.1.7. Cycling velodrome**

An indoor cycling velodrome was considered medium priority under the Recreation and Sports Facilities Strategy (2003). Consideration has been given to the provision of an indoor velodrome in this plan. However, after applying Council's prioritisation criteria, it has not met the threshold to be included.

A new velodrome would be expensive to construct and the number of track cyclists is relatively low, therefore, this would not represent an efficient and effective use of resources. A world-class indoor velodrome is available to track cyclists in Invercargill.

Further, the specific and unique nature of the layout and construction of a velodrome does not facilitate multi-use and efficient use of available capital. Investment in an indoor velodrome would not contribute to resolving the priorities identified in this plan.

#### **8.1.8. Functionality of existing council metropolitan sports facilities**

##### **1. Denton Park cycling velodrome**

Denton Parking Cycling Velodrome is coming to the end of its useful life; it does not meet international specifications for track cycling. It is being bypassed as a suitable venue for track

cycling events in favour of other, more modern and suitable cycling venues located across the country, particularly the indoor velodrome in Invercargill. It is also becoming increasingly more expensive to maintain.

It is located in a prime location within a major hub/activity centre identified within the Council's Urban Development Strategy (UDS).

It is proposed that as the venue comes to the end of its useful life, or sooner if possible, the Denton Park velodrome is offered as a possible site for an aquatic facility, community facility, library or mall development as envisaged under the UDS.

Council will concurrently investigate site locations for an alternative outdoor cycling track, possibly as part of a cycling park development to meet minimum standards for training and local competition.

## 2. Rugby League Park

Rugby League Park at Addington is currently leased to Canterbury Rugby League. The existing spectator stands and administration facilities are in poor condition and no longer meet the needs of the sport. The stand on the south-western side of the fields was recently condemned for public use. Both structures will require a significant upgrade in the near future.

The land on which the park sits is potentially more valuable to Council and the community as a commercial or other type of development, rather than as a leased sports facility.

Council would like to re-acquire the lease at the end of the current term (or sooner by mutual agreement) and realise the full potential of this land through an alternative use.

Council will work with Canterbury Rugby League to relocate their administration and playing functions to other existing sporting locations.

### **8.1.9. Maintenance of existing facilities**

Christchurch City Council has a number of well-maintained, well-suited and well-used specialist sports playing surfaces and facilities across the city.

It is anticipated that facilities at Porritt Park, the Fencing Centre at Addington, Wigram Gym, Sockburn Squash Centre and English Park continue to be maintained and supported to provide the existing levels of service.

English Park will require some remedial repair work to the playing surface to accommodate the full complement of games and training sessions.

Canterbury Softball Association have proposed an upgrade of the Cuthberts Green Softball facility. This will improve seating, provide a small corporate hosting area and improve office facilities enabling them to host regular Trans-Tasman softball competitions and tournaments in the City. Christchurch City Council will support the initiative to improve provision of service at this facility.

**8.1.10. Additional provision of all-weather artificial sports surfaces**

Council will investigate partnerships with other stakeholders to meet needs for provision of all-weather artificial surfaces for city-wide to cater for the following purposes:

1. An additional all-weather, full-sized hockey turf.
2. All-weather, multi-purpose training surfaces and lower level competition surfaces for winter sports (e.g. football, rugby, rugby league).
3. Outdoor hard-surface, multi-use playing areas.
  - Up to 40 outdoor netball courts, adjacent to the proposed indoor court facility at Addington, a proportion of the courts being for shared use by other sports, such as tennis. The asphalt courts will have a dual use as event parking when required.

**8.1.11. Council will proactively review existing lease agreements for council metropolitan sports facilities to:**

1. Bring these leases into line with current Council policy.
2. Bring maintenance responsibilities under the obligation of Council.
3. Agree an appropriate rental and/or transparent subsidy to off-set any additional maintenance responsibilities that Council may undertake as a result of these reviews.

**9. Application of criteria to identified options**

Council developed and adopted criteria to prioritise identified facility developments in August 2007. The table below summarises the assessment of each identified development against Council's criteria. The table records the degree to which each identified development is supported by each of the criteria. A score of 1 indicates a strong alignment to the criteria, a score of 2 indicates a moderate alignment and a score of 3 indicates a lower alignment. The scores for each identified development are aggregated to produce an overall priority (a priority of 1 being higher, 2 being moderate and 3 being lower).

**Table 4: Assessment of identified options**

Criteria (listed to the right)	Numbers of participants	Degree current demand/need exceeds supply	Degree city-wide planning processes are accommodated	Degree enhances Christchurch's ability to host major events	Degree enhances Christchurch as a centre of sporting excellence	Degree capital and operational costs can be met by others	Degree utilise/ positively impact / complement (rather than compete with) existing facilities	Degree are sustainable and best practice: Multi use/ Hubs/ All weather/ Ability to change	Degree supported by reliable and verifiable information	Degree needs identified can only be met through additional facility provision	Overall Priority
Development of a <b>mid-sized indoor sports arena</b> (at least eight courts and 3000 seats) at Addington	1 Multi-use by large participation sports.	1 City unable to host all franchise sport games. On-going shortage of indoor courts.	1 Addington site central in city.	1 Franchise, international and national sports events. Enhance flat floor expo capacity in tandem with Westpac Arena.	3 High performance located at QEII.	2 Capital contribution from other stakeholders. Operational costs significant and mostly met by hirers.	1 Complements Westpac Arena and Cowles Stadium.	1 Supports clustering of sports facilities and sharing of ancillary facilities.	1 Comprehensive independent needs analysis and option research completed.	1 No facility in city has functional capacity to meet the needs.	<b>1</b>
Upgrade <b>Cowles Stadium</b> seating (1500 seats), changing areas and event infrastructure	1 Multi-use but mostly basketball.	1 Good size for smaller franchise games. On-going shortage of indoor courts.	1 Existing facility.	2 Supports major events.	3 High performance located at QEII.	3 Renewal and refurbishment by Council.	1 Complements indoor facility network.	1 Supports clustering of sports facilities and sharing of ancillary facilities.	1 Thorough investigation completed.	1 Existing facility.	<b>1</b>
Complete the upgrade of <b>Ruapuna Raceway</b> hard-surface track to comply with international standards, improve garaging and hospitality facilities and continue the work on noise issues.	1 Small participation but large spectator numbers.	3 Existing facility. Need to maintain compliance to continue operation of racetrack.	Unknown Under investigation.	1 Enhance city as motorsport event option for South Island.	1 Improved track provide assured access for driving schools and racing team testing.	1 Users are financially independent.	1 Existing facility	1 Supports clustering of motor sports facilities.	1 Reliable information.	1 Existing facility and no other alternatives.	<b>1</b>
Retire <b>Denton Park</b>	1 Small number affected.	1 Replacement outdoor track envisaged.	1 Complements UDS and Aquatic Facilities Plan.	1 No change.	N/A	1 Offers city a valuable site.	1 Replacement envisaged.	N/A	2 Further investigation needed.	N/A	<b>1</b>
Proactively <b>review leases</b> for Council facilities with Council assuming asset management responsibilities in return for higher rent or transparent subsidy.	N/A	N/A	N/A	N/A	N/A	1 Risk of additional maintenance costs to Council. Lower risk of long-term asset degradation. Offset maintenance costs from rentals.	1 Better management of existing facilities.	1 Best practice asset management.	2 Need to investigate further before negotiation with stakeholders.	N/A	<b>1</b>
Re-acquire lease and retire <b>Rugby League Park</b> .	1 Small number affected by facility retirement.	1 Facility not fit for purpose.	1 Allows re-purposing of land.	1 No change, other arenas available.	N/A	1 Removes risk of significant capital expenditure.	1 Better use of other assets.	1 Not fit for purpose, move to multi-use facility.	2 Further investigation needed.	N/A	<b>1</b>
Develop up to 40 new <b>outdoor courts</b> at Addington to relocate netball from Hagley Park (with half the courts shared	1 Netball 10,000 users per week	3 Shortage of courts. Netball choose not to use community	1 Removes netball from Hagley Park enhancing green	3 Most high performance events now held in indoor	3 High performance located at QEII.	1 Netball could contribute towards capital cost through	1 Complements new mid-sized indoor facility and	1 Supports clustering of sports facilities and sharing of	1 Comprehensive independent needs analysis and option	3 Currently use courts at Hagley Park.	<b>2</b>

Criteria (listed to the right)  Identified Development (listed below)	Numbers of participants	Degree current demand/need exceeds supply	Degree city-wide planning processes are accommodated	Degree enhances Christchurch's ability to host major events	Degree enhances Christchurch as a centre of sporting excellence	Degree capital and operational costs can be met by others	Degree utilise/ positively impact / complement (rather than compete with) existing facilities	Degree are sustainable and best practice: Multi use/ Hubs/ All weather/ Ability to change	Degree supported by reliable and verifiable information	Degree needs identified can only be met through additional facility provision	Overall Priority
with tennis).	Some tennis use,	courts elsewhere in city.	space and reducing parking pressure as per policy in Hagley Park Management Plan.	facilities with sprung wooden floor, possibly some mass participation festival events.		levy on players. Low operational costs.	Addington event parking requirements.	ancillary facilities.	research completed.		
<b>English Park</b> remedial repair work to the pitch	1 Football (soccer) large sport, some potential for multi-use	1 Current field unable to cope with demand for games (and prevent use for training)	1 Existing facility	2 Will increase the number of games able to be played on park	3 Some potential.	3 Capital contributions unlikely. Operational costs recovered from hirers.	1 It is small-sized outdoor stadium in hierarchy.	2 Bring field up to best practice standard, not a hub.	1 Reliable information.	N/A Renewal of field.	<b>2</b>
Development of an ICC-compliant <b>arena for test cricket</b> on the Village Green at QEII (alternative option is the Bert Sutcliffe Oval at Lincoln).	2 Single-purpose facility. Cricket large participation sport.	1 NZ Cricket will no longer play tests at AMI Stadium.	1 Strengthens high-performance cluster at QEII, Canterbury high-performance cricket consolidated.	2 Retain test cricket.	3 National training centre at Lincoln.	2 Capital contribution from other stakeholders. Operational costs significant and mostly met by hirers.	2 Complements AMI Stadium	1 Supports clustering of sports facilities and sharing of ancillary facilities.	1 Comprehensive research of options for test cricket venue.	2 NZ Cricket will no longer play tests at AMI Stadium.	<b>2</b>
Incremental improvements to <b>Kerr's Reach</b> through removal of silt and weed and development of shore facilities.	2 Large number (20 plus) users, water sports mostly moderate to low numbers.	1 Significant congestion between users on Kerr's Reach. Exacerbated by silting and weed restricting periods of navigable water.	1 Existing facility.	3 Not compliant for competition.	1 Retains current training activity	1 Council assumes waterway management costs (weed and silt removal).	1 Existing facility.	1 Maintain existing facility.	1 Reliable information.	1 No alternative.	<b>2</b>
Continue to investigate the development of a <b>flat water sports facility</b> at Henderson's Basin	2 Large number (20 plus) users, water sports mostly moderate to low numbers.	1 Significant congestion between users on Kerr's Reach. Exacerbated by silting and weed restricting periods of navigable water.	3 Complex planning issues at Henderson's Basin.	2 Karapiro will remain premier national venue	2 Karapiro likely to remain national training venue.	Unknown Investigations in progress.	2 Split use with Kerr's Reach.	1 Supports clustering of sports facilities and sharing of ancillary facilities.	Unknown Investigations in progress.	1 Currently use Kerr's Reach. Shortfall in capacity due to water area available, only 1,830m length course, silting and weed.	<b>2</b>
Reconfigure existing layout of <b>QEII Main Stadium</b> for rectangular field sports (rugby, soccer, rugby league) by removing the athletics track and upgrading the warm-up track on the <b>QEII No. 2 Ground</b> following the IPC Athletics event in 2011.	2 Rugby and soccer large participation sports, rugby league smaller sport.	1 Demand from rugby, rugby league and football will increase. Rugby League need replacement for Rugby League Park. Rugby need an alternative venue if AMI Stadium unavailable. Soccer occasionally need a venue larger than English Park.	1 Existing facility. Strengthens high performance cluster at QEII.	2 Provides alternative mid-sized stadium attractive in scale for mid-sized events e.g. Phoenix A-league game. Complements AMI Stadium.	3 No change to high performance capability.	3 Limited options for alternative capital funding.	1 Complements AMI Stadium as the mid-sized outdoor stadium in hierarchy plus No. 2 and English Park as smaller stadiums.	1 Supports clustering of sports facilities and sharing of ancillary facilities.	3 Early stages of investigation.	1 Possible replacement for Rugby League Park.	<b>2</b>
<b>OR</b>	<b>OR</b>	<b>OR</b>	<b>OR</b>	<b>OR</b>	<b>OR</b>	<b>OR</b>	<b>OR</b>	<b>OR</b>	<b>OR</b>	<b>OR</b>	<b>OR</b>
<b>QEII Main Stadium</b> maintain the status quo,	2 Rugby and soccer	2 Rugby League need	1 Existing facility.	3 No change	3 No change to high	1 No change	2 It is mid-size outdoor	3 Less flexible than	1 Reliable information.	2 Existing facility.	<b>2</b>

Criteria (listed to the right)	Numbers of participants	Degree current demand/need exceeds supply	Degree city-wide planning processes are accommodated	Degree enhances Christchurch's ability to host major events	Degree enhances Christchurch as a centre of sporting excellence	Degree capital and operational costs can be met by others	Degree utilise/ positively impact / complement (rather than compete with) existing facilities	Degree are sustainable and best practice: Multi use/ Hubs/ All weather/ Ability to change	Degree supported by reliable and verifiable information	Degree needs identified can only be met through additional facility provision	Overall Priority
Identified Development (listed below)											
keeping an athletics track in the Main Stadium.	large participation sports, rugby league and athletics smaller sports.	replacement for Rugby League Park. Rugby will not use with track in place. Soccer occasionally need a venue larger than English Park.	Strengthens high performance cluster at QEII.		performance capability.		stadium in hierarchy.	reconfigured stadium			
Investigate the opportunity to locate metropolitan <b>facilities for other indoor sports</b> within the Wigram Hangars or at other large indoor spaces within the city as opportunities arise.	3 Most will be dedicated to single user. Mostly sports with smaller participation.	1 Require single purpose facility. Sports lack appropriate facilities.	Unknown	3 Single purpose events for smaller sports.	Unknown	2 Limited capital resources. Operational costs significant and mostly met by hirers.	1 No comparable facilities in the city.	3 Single use requirement.	Unknown	Unknown	2
Develop <b>outdoor artificial surfaces</b> to provide all-weather training and playing facilities at <b>QEII Park</b> .	1 Multi-use, multi-code, busiest facility in country	2 Emerging demand.	1 Strengthens high performance cluster at QEII.	3 Not designed for events.	1 Strengthens high performance cluster at QEII.	2 Possible stakeholder capital contributions. Operational costs recovered from hirers.	1 Complements existing QEII infrastructure.	1 High intensity use and multi-use.	3 Further investigation needed.	3 Further investigation needed.	2
Investigate partnership for provision of <b>outdoor artificial surfaces</b> to provide all-weather playing and training facilities for city-wide use for rugby, soccer, rugby league and an additional hockey field.	1 Use by large sports (rugby, soccer) and mid-sized sport (hockey) and small sport (rugby league).	2 Demand increasing over time.	2 Allow greater intensity of use on existing green space.	3 Might be used in extreme weather for to enable completion of tournaments.	3 Mostly for participation.	1 Capital contributions likely from partnerships. Operational costs lower than natural turf fields.	1 Complement natural turf fields at high-use locations.	1 Supports clustering of sports facilities and sharing of ancillary facilities.	Unknown Needs further investigation.	Unknown Needs further investigation.	2
Upgrade <b>Cuthberts Green Softball</b> facility to improve seating, provide a small corporate hosting area and improve office facilities.	3 Single purpose facility for mid-size sport.	2 Ancillary facility improvements, seating sub-standard.	1 Existing facility.	1 Will enhance to host national and international softball events.	3 No increase in capacity.	1 Capital contributions likely. Operational costs recovered from hirers.	1 No comparable facility.	2 Supports clustering and best practice provision.	1 Reliable information.	N/A Renewal and refurbishment.	2
Investigate site locations for an alternative outdoor <b>cycling track</b> possibly as part of a cycling park development to meet minimum standards for training and local competition.	3 Track cycling small numbers, cycling park reflects large bike participation. Speed skating small sport.	2 Current track can continue to meet cycling demand in the interim. Retirement of Denton Park track.	Unknown	3 Training facility.	3 Track cyclists will use for some training but high performance cyclists will train overseas or in indoor velodrome in Invercargill.	3 Capital contributions possible from sports. Operational costs low and met by sports.	1 No comparable facility.	Unknown Further investigation required.	Unknown Further investigation required.	Unknown Further investigation required.	3

## 10. Priorities for metropolitan sports facility developments

Identified priorities for metropolitan sport facility developments during the next 20 years are listed below. Project timeframes and the nature of any Council financial contribution to the projects will be determined through the 2009-2019 LTCCP process. The priorities within the plan will be reviewed three-yearly as part of the lead up to the review of each subsequent LTCCP.

The information in the table includes the indicative priority, description of the proposed development action and an indicative range of capital cost. The indicative capital range will change considerably when details are established for each proposed action. Council will not be the only contributor. In reality, facility developments will not be feasible without capital and operational contributions from others.

The plan recognises that there will also be operational cost implications of any projects. However, the majority of operational costs will be recovered through user charges and/or partner contributions.

Cost implications will be included in any further Council consideration of projects. All projects in the table require detailed feasibility assessments to accurately indicate costs.

**Table 5: Priorities for metropolitan sports facility developments**

(Priority ranking of 1 indicates a higher priority)

Priority	Action Description	Indicative financial implications (2008 value) <sup>12</sup>
1	Development of a <b>mid-sized indoor sports arena</b> (at least eight courts and 3000 seats) at Addington.	\$15 to \$19 million CAPEX
1	Upgrade <b>Cowles Stadium</b> seating (1500 seats), changing areas and event infrastructure.	\$1 to \$1.5 million
1	Complete the upgrade of <b>Ruapuna Raceway</b> hard-surface track to comply with international standards and improve garaging and hospitality facilities and continue the work on noise issues.	Under investigation
1	Retire Denton Park.	Possible OPEX savings
1	Proactively <b>review leases</b> for Council facilities with Council assuming asset management responsibilities in return for higher rent or transparent subsidy.	Variable
1	Re-acquire lease and retire <b>Rugby League Park</b> .	Unknown
2	<b>English Park</b> remedial repair work to the pitch.	\$0.5 to \$1 million CAPEX
2	Develop up to 40 new <b>outdoor courts</b> at Addington to relocate netball from Hagley Park (half the courts shared with tennis)	\$2 to \$3 million CAPEX
2	Development of an ICC-compliant <b>arena for test cricket</b> on the Village Green at QEII (alternative option is the Bert Sutcliffe Oval at Lincoln).	\$5 to \$10 million CAPEX
2	Incremental improvements to <b>Kerr's Reach</b> through removal of silt and weed and development of shore facilities.	Unknown
2	Continue to investigate the development of a <b>flat-water sports facility</b> at Henderson's	Under investigation

<sup>12</sup> Capital cost estimates are indicative estimates based on other known similar or planned developments. A 5% construction cost inflation rate has been used where estimates were sourced from past years. More detailed capital costs will be developed as part of the business case for each project

	Basin.	
2	Reconfigure the existing layout of <b>QEII Main Stadium</b> for rectangular field sports (rugby, soccer, rugby league) by removing the athletics track and upgrading the warm-up track on the <b>QEII No. 2</b> Ground following the IPC Athletics event in 2011.  Maintain the status quo, keeping an athletics track in the Main Stadium.  <b>OR</b> <b>QEII Main Stadium</b> maintain the status quo, keeping an athletics track in the Main Stadium.	Unknown <sup>13</sup>
2	Investigate the opportunity to locate metropolitan <b>facilities for other indoor sports</b> within the Wigram Hangars or at other large indoor spaces within the city as opportunities arise.	Unknown
2	Develop <b>outdoor artificial surfaces</b> to provide all-weather training and playing facilities at <b>QEII Park</b> .	\$1 to \$2 million
2	Investigate partnership for provision of <b>outdoor artificial surfaces</b> to provide all weather playing and training facilities for city-wide use for rugby, soccer, rugby league and an additional hockey field.	Under investigation
2	Upgrade <b>Cuthberts Green Softball</b> facility to improve seating, provide a small corporate hosting area and improve office facilities.	\$0.36 million Council \$0.1 million
3	Investigate site locations for an alternative outdoor <b>cycling track</b> possibly as part of a cycling park development, to meet minimum standards for training and local competition.	Unknown

### Levels Of Service

Council will maintain current levels of service at Council-owned metropolitan sports facilities namely:

- Porritt Park
- Fencing Centre at Addington
- Sockburn Squash Centre

## 11. List of appendices

---

**Map of existing metropolitan sports facilities across the city**

**Sport issues beyond scope of metropolitan sports facilities plan**

**Council reports referred to in the plan**

**List of stakeholders consulted**

**Issue and condition assessment summary table**

<sup>13</sup> Seeking clear direction before pursuing indicative costs for any Main Stadium actions.

**Sports Membership Statistics**

Christchurch City Council

Plan for Metropolitan Sports Facilities in Christchurch

---

Appendices of Draft for  
Consultation

**12 March 2008**

## **Glossary of terms used in the plan**

**Activity centres** Key commercial/business centres identified in the UDS as focal points for the transport network and suitable for more intensive mixed-use development.

**Asset management plan** Council plans that detail and forecast maintenance requirements for a Council facility over time.

**Co-location** Shared use by two or more Council service providers from a Council-owned building.

**Community Outcomes** Identified goals of communities in relation to the present and the future for the social, economic, environmental and cultural well-being of the community.

**Facilities (Assets)** Buildings or built sports arenas, excluding the internal fittings and hardware.

**Franchise Sport Regionally or nationally based ownership of rights to compete in national or international competition, often involving players paid to play e.g. Canterbury Crusaders, Tactix Netball, Canterbury Rams, Christchurch Sirens and Canterbury United**

**ICC International Cricket Council**

**IPC International Paralympics Committee**

**GST** All dollar amounts are GST exclusive

**LTCCP** Long Term Council Community Plan.

**Metropolitan sports facilities** Facilities which provide benefits and services for sport at a city-wide, national or international level.

**Network** A framework for the provision of variously-sized facilities has been developed to ensure citywide access to a range of facilities.

**Partnership** A relationship that enables a combined approach to funding, supplying, managing or supporting aspects of initiatives between citizens, communities, organisations and Council.

**Services** The activities that happen *within* facilities.

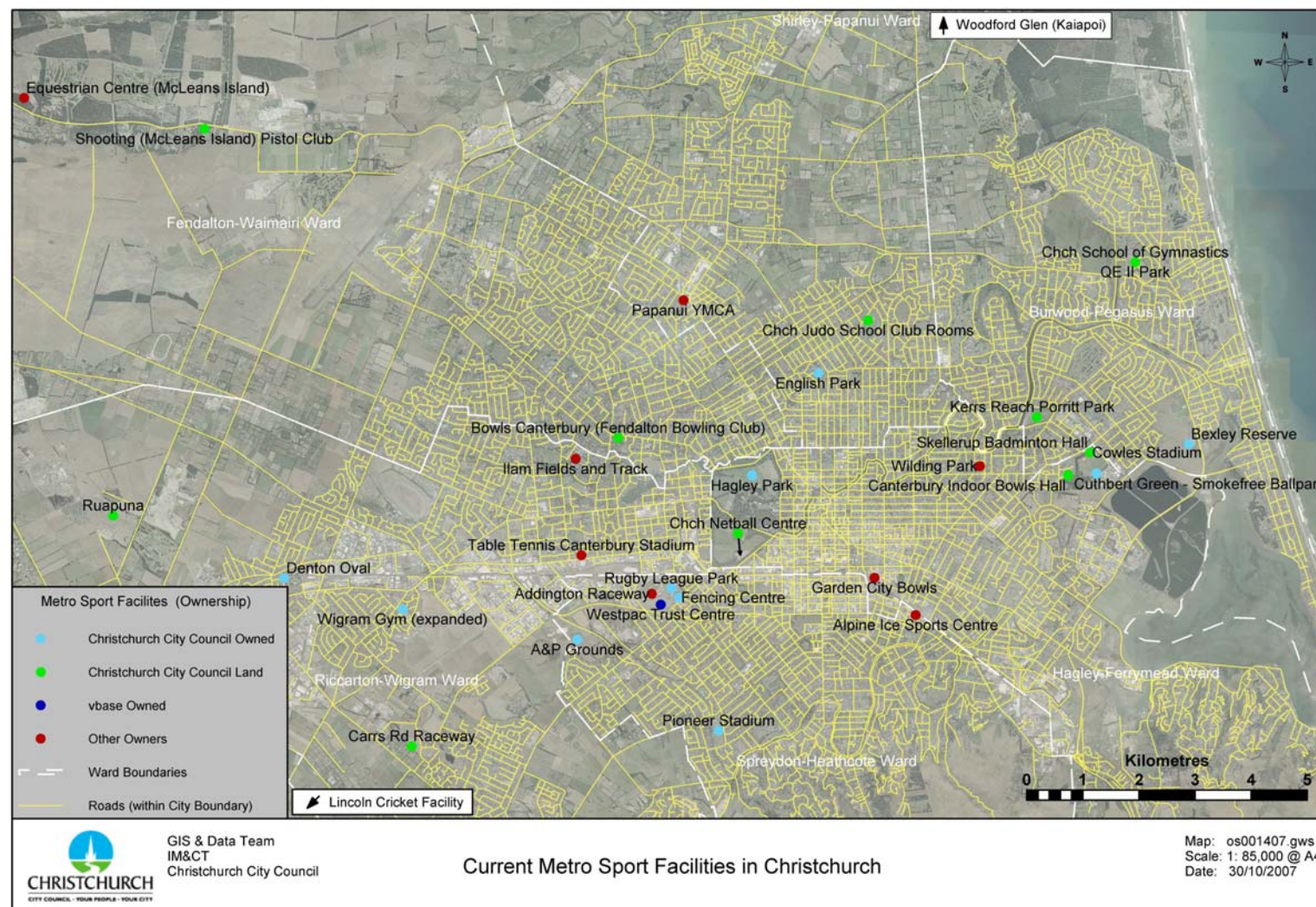
**UDS** Greater Christchurch Urban Development Strategy and Action Plan 2007

## Contents

<b>1. List of appendices</b> .....	<b>3</b>
Map of existing metropolitan sports facilities across the city.....	3
Sport issues beyond scope of metropolitan sports facilities plan.....	4
<b>General sports issue</b> .....	<b>4</b>
<b>Table Tennis</b> .....	<b>4</b>
<b>Badminton</b> .....	<b>4</b>
<b>National Equestrian Centre</b> .....	<b>4</b>
<b>Canoe/Kayak/whitewater</b> .....	<b>4</b>
<b>Fencing</b> .....	<b>5</b>
<b>Inline Hockey</b> .....	<b>5</b>
<b>Outdoor Bowls</b> .....	<b>5</b>
Council reports referred to in the plan.....	5
List of stakeholders consulted.....	6
Issue and condition assessment summary table.....	8
Sports Membership Statistics.....	24

# 1. List of appendices

## Map of existing metropolitan sports facilities across the city



### **Sport issues beyond scope of metropolitan sports facilities plan**

The research and consultation undertaken to develop the Metropolitan Sports Facilities Plan identified issues which do not require a metropolitan facility solution. Following a directive from Council, these issues have been recorded and suggestions made to assist these sports. These do not form part of this plan. These issues and suggested solutions were circulated to Councillors the February 2008 seminar and were:

#### General sports issue

- Issue
  - Lack of suitable outdoor sports fields.
- Resolution Pathway
  - Dealt with through Sports Fields Needs Analysis project and Open Spaces Strategy.

#### Table Tennis

- Issues
  - Lack of coaches.
  - Roof leaking in the TTC building and possible upgrade of facilities in the future.
  - School programme establishment dependent on having the “right” person to drive it.
- Resolution Pathway
  - Options exist through CCC grants and loans to assist with roof replacement.
  - Support through Sport Canterbury for coach development and schools programme.

#### Badminton

- Issues
  - Would like additional facilities in the west of the city.
  - Roof repairs needed to existing facility in Pages Road.
  - Existing roof height of Pages Road facility too low to use eight courts for competition.
  - Media facilities needed at Pages Road.
- Resolution pathway
  - Work with Badminton through Sport Canterbury to investigate options for facility use west of city.
  - CCC grants and loans process for roof repairs and media facilities.

#### National Equestrian Centre

- Issue
  - Recent 300% increase in lease charges from Ecan.
- Resolution Pathway
  - Established CCC Funding support opportunities.

#### Canoe/Kayak/white-water

- Issues
  - Weed and silt in Avon River.
  - Congestion at Kerrs Reach continues.
  - No white-water facility close to Christchurch.
- Resolution pathway
  - On-going work on river by Greenspace, Asset and Network Planning Unit.
  - Further education and safety improvements at Kerrs Reach.
  - Investigate opportunities at the Groynes or in conjunction with flat water development.

### Fencing

- Issues
  - No significant issues.
  - Currently have the best (only) dedicated fencing facility in New Zealand.
  - Minor graffiti and vandalism issues with building.
- Resolution pathway
  - Continue to maintain existing facility.

### Inline Hockey

- Issues
  - Loss of facility when Skatezone closed.
  - No suitable competition facility available in Christchurch.
  - Sport is not going forward and missing out on events.
- Resolution pathway
  - Possible location at Wigram hangars.
  - Proposed new indoor space in MSFP would enable freeing up of space elsewhere.

### Outdoor Bowls

- Issues
  - Some amalgamation of clubs needed in some areas.
  - Unwillingness to pay – the sport is undervalued.
  - Player expectations of facilities have risen.
  - A four to six green undercover facility would enable inter-centre competitions, as well as regular national events but the drive for a move to indoor is not particularly strong.
- Resolution pathway
  - Sport Canterbury assist with club amalgamation, education and marketing of sport.
  - Input into Open Space Strategy and Sports Fields Needs Analysis.
  - One-off events accommodated in existing indoor space.
  - Drive for dedicated indoor facility to come from the sport itself.

### **Council reports referred to in the plan**

Links to these documents can be found on the CCC website under Having Your Say section of the home page or by searching for Metropolitan Sports Facilities Plan or under their own names or using the links provided.

- 1996 Sport and Recreation Policy - see Policy Register at [www.ccc.govt.nz/policy/](http://www.ccc.govt.nz/policy/)
- 2002 Physical Recreation and Sport Strategy
- 2003 Recreation and Sports Facility Strategy
- 2005 QEII Concept Plan
- 2007 Events Strategy
- 2007 Strengthening Communities Strategy
- Urban Development Strategy
- 2006-2016 LTCCP

**List of stakeholders consulted**

Consultation	Groups included
Background information sent and invitation to discuss.	Most major Canterbury Regional Sports Organisations, all SPARC-recognised National Sports Associations (as per SPARC website), key stakeholders and sports sector representatives.
Written or verbal response to initial approach received from and/or meeting or conversation held.	<p>Addington Raceway Limited  AMI Stadium Manager  Arawa Canoe Club  Athletics Canterbury  Badminton Canterbury  Basketball New Zealand  Bowls Canterbury  Canterbury AFL  Canterbury Basketball  Canterbury Car Club  Canterbury Cricket  Canterbury Flames  Canterbury Gymnastics  Canterbury Hockey  Canterbury Hockey Foundation  Canterbury Ice Trust  Canterbury Netball  Canterbury Rowing  Canterbury Rugby Football Union  Canterbury Rugby League  Canterbury Softball  Canterbury Tennis  Canterbury Volleyball  Christchurch Netball Centre  Cycling New Zealand – Canterbury  Frank Stefanissin (Private Interest)  Ice Speed Skating New Zealand  Lake Isaac Water sports Park  Mainland Football  National Equestrian Centre – McLean’s Island  Netball New Zealand  New Zealand Academy of Sport – South Island  New Zealand AFL  New Zealand Cricket  New Zealand Ice Hockey  Ngai Tahu Property Limited Contact  Parafed Canterbury  SPARC sports, events and facility planning representatives  Sport Canterbury  Squash Canterbury  Table Tennis Canterbury  Various Media Representatives  Vbase Venue Management  White water Canoe club/Canoe Polo club</p>
Newsletter update	Regular mail out to most Regional Sports Associations, external stakeholders, internal Council staff, Mayor, Councillors and Community Board Members, sports sector representatives and other interested contacts (about 200 in total).
Sport Canterbury CEOs breakfast meeting session held.	Various senior representatives from Canterbury Regional Sports Associations plus major clubs, national sports and sports sector representatives (approx 50 in total).
Christchurch City Council internal Stakeholders meeting held	<p>Asset and Planning Network Unit  Christchurch City Council CEO and Executive Team  Cowles Stadium Manager  Network Planning Team, Greenspace Unit  Northern Area Manager – Recreation and Sports Unit (QEII)</p>

	Open invite internal stakeholders meeting Open Space Strategy Consultant Recreation and Sports Unit Team Leaders
--	--

**Issue and condition assessment summary table**

The table is in alphabetical order by sport rather than by priority.

Sport	Facility	Issues / Limitations	Condition Description (fit for purpose)	Age of Facility	Plans	Options
Athletics	QEII Main Stadium	<p>QEII main stadium was built for the 1974 Commonwealth Games and as such its existing seating and hosting capacity is far in excess of what is needed for athletics events and operations today. This does not allow for the creation of an atmosphere for supporters at athletics events.</p> <p>The hosting of the IPC Athletics World Championships in 2011 provides an opportunity to review the on-going configuration and location of an international competition track for the city.</p>	Main stadium and track and field facilities are in good condition – fit for purpose. Seating and ancillary facilities over-catered to purpose.	Main building built 1974. Various renewals and upgrades since this time.	Dependent on outcome of this plan and opportunities taken up from hosting of IPC Athletics World Championships in 2011.	<ol style="list-style-type: none"> <li>Relocate competition track to No.2 ground at QEII after IPC Athletics world Championships.</li> <li>Status quo.</li> </ol>
Badminton	Skellerup Badminton Hall	<p>Badminton has about 400 members with another 400 pay-for-play players. Skellerup Badminton Hall has eight courts and is the main venue. The bulk of badminton is played informally in community halls and gyms that are not known to the Association. The sport has an adequate supply of facilities to cater for current demand. The location of Skellerup Badminton Hall on Pages Road is unfortunate because most clubs are in the west of the city.</p> <p>The Skellerup Badminton Hall is owned by the Association and needs repair and updating. The repairs have been deferred because of lack of finance and external grants.</p>	Skellerup Badminton Hall is dated and needs some modernisation. There are major issues with the roof leaking and the asbestos lining is causing concern. It currently meets Badminton Canterbury's future requirement but will require roofing issues to be sorted.	At least 35 years old.	Any future facility development should be in south west / Riccarton/ Addington areas of the city.	<ol style="list-style-type: none"> <li>Badminton could be part of any facility development that occurs in the south west of the city.</li> </ol>
Basketball	Westpac Arena/ Cowles	<p>Lack of mid-sized arena suitable for franchise teams (Rams/Sirens). Need a 3000 seat arena, a venue that is identified as "the home of" Canterbury Basketball and where each team can practice regularly on home court. Cowles Stadium is too small (1200 capacity) but does provide cauldron feel and with improvements is adequate in the short term. Westpac Arena is too big and expensive for franchise games and even internationals.</p> <p>There is a lack of a four-court facility to attract</p>	<p>Westpac Arena is fit for purpose but often too large to create atmosphere, too costly and not always available for basketball.</p> <p>Cowles Stadium needs upgrading to meet standards – seats, change areas, lighting, sound, media and the entrance.</p>		<p>Use improved Cowles Stadium as interim home of Canterbury Basketball and franchise teams.</p> <p>New mid-sized event facility with four courts is needed to improve viability and competitiveness of Rams and Sirens franchises.</p>	<ol style="list-style-type: none"> <li>Combination mid-sized arena with four participation courts is the preferred option. Assured long-term rights of access needed to secure basketball as major user.</li> <li>Preferred location</li> </ol>

Sport	Facility	Issues / Limitations	Condition Description (fit for purpose)	Age of Facility	Plans	Options
		<p>Basketball New Zealand national tournament events. There is strong competition from other cities with superior venues. Facility to west of central city needed to balance cluster of facilities in east and north.</p> <p>High performance centre for basketball continues to be based at QEII. With Sirens based in Christchurch, this has attracted the Basketball New Zealand women's high performance centre to the city as well.</p> <p>Growth of sport limited by court availability during season. Currently 548 teams (5000 players). Season now operates 40 weeks per year.</p> <p>Increasing potential for conflict with netball as both sports compete for limited number of courts. Need extra capacity. Difficult to share participation courts as both want courts at same times.</p>			<p>Extra court capacity for basketball to cater to growth.</p>	<p>is in western side of city. Addington or south west are preferred locations because of population growth. Addington on main bus route from south west and on Orbiter route.</p>
Cricket	Cricket Facilities	<p>AMI Stadium is not a preferred test match venue for New Zealand Cricket (NZC) due to cost and size, and therefore inability to create ambience and atmosphere. An alternative outdoor arena is required to continue to host international test matches (as well as domestic 1<sup>st</sup> class and other representative games) in Christchurch. However, AMI Stadium has accreditation for test cricket matches from the ICC as a previously complying venue and could continue to host tests if NZC would accept it. Alternate test venue is needed for date clashes with rugby.</p> <p>The Canterbury region with 18,044 players of all ages and Christchurch city with 11,469 players in 2005/06 (NZC player census) illustrates the popularity of cricket. CCC has recognised the strength of the sport in the city and invested in the development of the Village Green at QEII as a first-class cricket venue. The wicket block is well established and one of the best in New Zealand. Used for Chris Cairns' final one-day game, it had 6000 people</p>	<p>AMI Stadium meets ICC accreditation for all cricket as an existing venue.</p> <p>Village Green at QEII does not currently meet ICC standards for test cricket.</p>		<p>Canterbury Cricket have undertaken investigations into the various options for development of a site for test cricket. QEII's Village Green is one option. Development includes expansion of the current field to the new ICC test ground dimensions, use of the existing wicket block of nine pitches using Waikari clay, outdoor and indoor training facilities, spectator capacity for 9000 people, player, officials, corporate and media facilities.</p> <p>An alternative solution, if the Village Green is unworkable, could be limited upgrade of alternative arena at</p>	<p>6. Upgrade Village Green at QEII into test venue (either temporary or permanent)</p> <p>7. Convert QEII main stadium by removing athletics track, extend field area onto land currently leased to golf and refurbish grandstand and develop media facilities. Cost \$25 million (CCA meeting Dec 2007)</p> <p>8. Upgrade Lincoln Oval into test venue (either temporary or permanent) Cost - unknown</p>

Sport	Facility	Issues / Limitations	Condition Description (fit for purpose)	Age of Facility	Plans	Options
		<p>in attendance.</p> <p>ICC boundaries for test arenas extracted from ICC regulations (Jan 2008)</p> <p><i>The playing area shall be a minimum of 150 yards (137.16 metres) from boundary to boundary square of the pitch, with the shorter of the two square boundaries being a minimum 65 yards (59.43 metres). The straight boundary at both ends of the pitch shall be a minimum of 70 yards (64.00 metres). Distances shall be measured from the centre of the pitch to be used.</i></p>			<p>Lincoln to meet ICC specifications.</p>	
Cycling	Denton Park Velodrome	<p>Velodrome has passed its use-by-date and is no longer capable of national/international use but is used for training and local club events. Because of the poor condition of Denton Park, Cycling New Zealand has not considered requests for National Track Cycling Championships to be held in Christchurch in recent years. The recent development of the new indoor velodrome in Invercargill has created a new benchmark for indoor tracks for national and international cycling events in New Zealand. The Invercargill velodrome has four netball courts in the central area and is attached to the Southland Stadium. At present there is no direction from the national level as to how many indoor velodromes are required in New Zealand. At present Invercargill is used by default for national events and high-performance training.</p> <p>The increasing difficulty of staging road cycling events on public roads is likely to lead to the development of road circuits that can be closed to traffic for events and training. These circuits are included in large park developments at Saxton Field in Nelson and a regional sports park in Hastings. These circuits can also be used for multi-sport and speed skating events.</p>	<p>Not fit for cycling competition but still usable for training for medium term. Will need significant investment in medium term.</p> <p>New fencing installed to deter vandals and regular track repairs required to keep to bare minimum standard. Conversion of hot water to gas has been a milestone and the changing rooms/storage are well used by cycling and rugby.</p>	<p>Built for the 1974 Commonwealth Games. Converted from asphalt to concrete track in 1994 (Cost: \$300,000)</p>	<p>Currently Canterbury Cycling is in the process of looking at a feasibility study to build a new indoor velodrome to replace the obsolete Denton Park facility. It is recognised that such a facility will need to include indoor courts to improve viability.</p> <p>Canterbury Cycling would like to see development of a road circuit as part of a multi-sport park. Preferably the circuit would have some rises and falls to provide opportunities for riders to break away from the bunch during races and training.</p>	<p>9. An indoor velodrome facility could be located alongside an existing stadium to share resources, such as QEII (with benefits of co-location with a high-performance training hub) or Westpac Arena (possibly providing some of the indoor netball courts).</p> <p>10. Integration of the indoor velodrome with a mid-sized indoor arena with 3000 seats is likely to be prohibitively expensive.</p> <p>11. The indoor velodrome could be a stand-alone facility providing indoor court capacity in a growth area of the</p>

Sport	Facility	Issues / Limitations	Condition Description (fit for purpose)	Age of Facility	Plans	Options
						<p>city such as the south-west.</p> <p>12. Cost of \$12 to 14 million (based on Invercargill)</p> <p>13. Develop a road circuit for cycling and other sport activities within a new park development or as part of restoration of a gravel extraction site.</p>
Equestrian	National Equestrian Centre	<p>Christchurch is the major South Island centre for equestrian sports. The National Equestrian Centre is one of only two in New Zealand. The other is in Taupo. The Centre leases the McLean's Island site from Environment Canterbury. It lacks a covered all-weather arena. Good facility but requiring frequent maintenance of yards, stable blocks and arenas. This facility is heavily used and not always available.</p> <p>The completion of the RDA indoor facility at Curletts Road is able to meet the indoor training needs for dressage and show jumping.</p>	Facility is fit for purpose. One of two National centres in New Zealand. Incremental improvements have been made over time.	20 years old	<p>The centre is constantly being upgraded and improved on an as needed and can be afforded basis.</p> <p>A long-term goal is the development of an indoor facility at the National Equestrian Centre.</p>	14. Status quo
Fencing	Ideal Fencing Place	Fencing has leased a building from Council that was vacant following the purchase of Rugby League Park from the A&P Association. Council upgraded the building and provided part of a movable sports floor for temporary use by fencing (option for Westpac Arena to use the floor when required).	Facility is generally maintenance free externally, apart from occasional graffiti, the floor is currently part of the wooden floor from netball and well used as a fencing venue, toilets/showers etc have been painted and the area modernised with a new kitchen installed.	Original building at least 20 years old. Refit for fencing about 2003.	No plans for further development.	15. Status quo
Football	QEII - Stadium and English Park	<p>QEII - Stadium is used for international events, but can be too large for national events.</p> <p>QEII - No.2 Field is used for National events</p>	Seats 14,000 spectators (5000 covered) with maximum of 18,000 in the arena. New Zealand's	QEII Main Stadium built for	English Park field is over compacted - need to upgrade grass turf or	16. Relocate Mainland Football

Sport	Facility	Issues / Limitations	Condition Description (fit for purpose)	Age of Facility	Plans	Options
		<p>but limited by lack of facilities for spectators. Used almost exclusively as a training space for football and academies. High usage. Back-up facility for athletics grass track when major athletics being held in Stadium.</p> <p>English Park – was redeveloped at a cost of \$2.8 million in 2002 and is used as the home ground by the Canterbury United franchise because of appropriate scale spectator and ancillary facilities. Since redevelopment, it has had restricted use for games and training because of the field's ground compaction issues. The pavilion has also been reconfigured; new offices have been built on ground floor to use gym area. An upstairs café area is not used.</p>	<p>premier athletics facility. Mid-level venue for winter codes. Important training venue.</p> <p>QEII - No.2 Ground quality excellent.</p> <p>English Park - Facility is in excellent condition but ground compaction issues on field are a major issue.</p>	<p>1974 Commonwealth Games. The temporary grandstands replaced with embankment and English Park – redevelopment in 2002</p>	<p>replace grass turf with artificial turf costing about \$750,000.</p> <p>English Park is not a suitable location for the headquarters of the Mainland Football Federation. The Federation would prefer to be located at QEII with high-performance training facilities and administration facilities at a single site.</p> <p>Mainland Football would like to locate its high-performance training facilities and administration at QEII. The facilities needed include one artificial all-weather surface field, six grass turf fields, an indoor training area with a suitable artificial surface, player changing facilities and a co-located administrative facility for about 15 staff.</p>	<p>administration headquarters and high-performance training centre to QEII.</p> <p>17. The QEII Outdoor Stadium could become the home for several sports teams including football showcase games and possibly a franchise. Current seated capacity of the outdoor stadium is estimated at 14,000 spectators with maximum of 18,000 in the arena and this would be ample for these games.</p> <p>18. QEII could become the base for Mainland Football high-performance centre and administration headquarters.</p> <p>19. English Park continues to be the home of the Canterbury United franchise. A redeveloped</p>

Sport	Facility	Issues / Limitations	Condition Description (fit for purpose)	Age of Facility	Plans	Options
						<p>QEII No.2 arena with 3000 seated capacity could be an alternative location. However, there could be clashes with athletics over access to the arena.</p>
Gymnastics	Christchurch School of Gymnastics	<p>In 2005, there were over 5000 registered gymnasts (499 competition gymnasts, 571 participants with clubs, another 2072 recreational gymnasts and almost 13,900 school students participating in club operated gymnastic programmes. Canterbury Gymnastics completed a Facilities Strategy in 2005 in response to participation growth pressure and club driven initiatives to develop several dedicated gymnastic facilities in the city.</p> <p>The completion of the Christchurch School of Gymnastics (located at QEII) and an extension has created a facility able to host city-wide and regional events. National and international events have used the Westpac Arena as recently as 2006. The Westpac Arena was identified in the Strategy as the best facility available in the region to host these events. However, the high cost of the venue has major impact on the cost structure and viability of hosting events.</p> <p>Two clubs (Impact-Alpha and Olympia) have plans to develop larger facilities. There is concern that if both are developed this could create an oversupply of gymnastic facilities in the city.</p>	<p>Purpose-built gymnastics facility to international standard. Two independent but co-located spaces. Has two gymnasiums. The first measures 50m x 25.5m, giving a total floor area of more than 1000sqm. It is purpose built and permanently set up as an artistic gymnastic training facility. The new extension is 43m x 25.5m. The new gymnasium is used for trampoline sports, and preschool and general gymnastic classes. The original gymnasium is for the competition training squads and schools programmes during the day.</p> <p>Olympia building in sound condition with many years of useful life left. Formerly the gymnasium for Wigram Air Force Base, it is now leased from Council.</p>	Christchurch School of Gymnastics Stage 1 about 1996, stage 2 2007.	<p>The Facility Strategy included a recommendation that Canterbury Gymnastics seek long-term arrangement with Christchurch City Council to reduce the hire fee for the Westpac Arena as part of Council support to attract national events to the City or for the City Council to establish a fund for community groups to cover a component of the cost of hire.</p> <p>The Strategy also identified potential for co-location of a gymnastics facility capable of hosting regional events with an indoor facility for netball.</p>	<p>20. Non-asset solution to reduce cost of hiring Westpac Arena should be considered.</p> <p>21. Include capacity for the proposed mid-sized indoor multi-court arena to host international and national gymnastics events for the various disciplines including trampoline and aerobics.</p>
Hockey	Porritt Park	Canterbury Hockey has experienced a 5% average growth per year over recent years, with currently just under 4000 registered players. The three water-based artificial turfs are operating at capacity. However, a fourth	Grandstand stage one upgrading completed in 2004 (\$700,000) and deferred maintenance to be completed as part of stage two works (\$300,000 estimate), new	Porritt Park Pavilion built for the 1974	Cyclic renewal of the three artificial turf carpets (and possibly base if required) every seven to 12 years. Council provides a capital	22. Council takes over ownership of the turfs and incorporates renewal costs into

Sport	Facility	Issues / Limitations	Condition Description (fit for purpose)	Age of Facility	Plans	Options
		turf is not required to present. Renewal or replacement of turfs is the major long-term facility issue facing hockey. It is one of a small number of sports that own and fund most of the cost for provision of their playing area.	fence at boundary and car parking area to alleviate parking issues at the rear of the facility. Facility at maximum playing capacity and fit for purpose.	Commonwealth Games. No. 1 water turf replaced sand turf in 1994. No.2 water turf completed in 2003	grant to part fund these renewals.  Canterbury Hockey plans to upgrade ancillary facilities at Porritt Park (previously deferred) and will seek Council assistance.	LTCCP planning.  23. Council increases annual capital grant contributions to majority fund renewal of artificial turfs.
Ice Sports <ul style="list-style-type: none"> <li>▪ Ice Skating</li> <li>▪ Figure skating</li> <li>▪ Ice hockey</li> <li>▪ Ice speed skating</li> <li>▪ curling</li> </ul>	Alpine Ice Sports Centre	The rink at the Alpine Ice Sports Centre does not comply with requirements for international events. The Centre can not host a major international event and is also a disadvantage for training for international events. There is limited seating for major events. As the facility is privately owned, the owner charges commercial rates of hire. This is a major burden for ice sports. Clubs have difficulty gaining sufficient access to operate for programmes. New ice rink facilities have been developed in Dunedin (conversion of Dunedin Stadium) and Gore (new purpose-built facility co-located with swimming pool for energy efficiency).	Fit for purpose but pressure on ice time, especially during peak periods. City's only international sized ice sports centre. Alpine Ice is regularly maintained and the interior upgraded to keep it looking modern and fresh.	1985	Plan is to develop a new ice rink facility in Christchurch with Olympic sized rink (60m x 30m), 900 permanent seats and ancillary facilities. Ice sports see this as a complementary facility to the existing ice rink. A trust was formed and feasibility study done, and design and costing completed in 2003/2004. QEII was identified as preferred location. Ice sports would prefer a Council-owned facility is developed with on-going access rights for use.	24. Co-location of ice rink facility as part of a multi-code sports hub facility.  25. Co-location with an aquatic facility to improve energy efficiency and viability of both facilities.  26. Cost estimated at \$9.5 million in 2005
In-line hockey and roller/in-line skating	New	Private interests within the in-line hockey and roller/in-line skating community are proposing to develop an indoor rink in Christchurch. These interests are seeking a 150sqm to 2000sqm building to lease or Council land on which to construct a building to house the rink and ancillary facilities. It is proposed that a company is formed to purchase the 50m x 30m rink preferably with a plastic coated floor. The facility would be operated on a commercial basis.	N/A	N/A	Proposal to develop an indoor in-line hockey and roller/in-line skating rink preferably in the Addington/Riccarton area with support from Council.	27. Provide land for construction of the 2000sqm facility.

Sport	Facility	Issues / Limitations	Condition Description (fit for purpose)	Age of Facility	Plans	Options
Indoor Bowls	Canterbury Indoor Bowls Association Hall	The hall has a concrete floor with a synthetic surface (rubberised layer) to relieve the harshness of the concrete.	Two new offices were built to the right of the entranceway and indoor seating sold to Cowles Stadium. The venue is under-utilised outside indoor bowls use.	Unknown	The Association would like to extend the building in the long term to allow the inclusion of showers.	28. Status Quo.
Lawn Bowls	Fendalton Bowling Club (Bowls Canterbury)	<p>Events are held at one or more clubs depending on number of players involved and format. Lawn bowls requires a large number of greens at clubs located across the city and in neighbouring districts when hosting the National Bowling Championships. Lawn bowls was also successful with its bid to host the World Cup in January 2008.</p> <p>Increasing numbers of players wish to play year-round and demand for a major indoor facility is growing. This will also provide a year-round training environment for high-performance players.</p>	Fendalton Bowling Club has been home of Canterbury Bowls since 2005. Refit of women's bowling club to accommodate Canterbury Bowls offices. Greens and associated facilities up to international standard. Hosting components of world bowls championships in 2008.	Club formed in 1942.	Bowls Canterbury is planning development of an indoor facility with four to six greens undercover along with ancillary facilities.	<p>29. Co-location of a dedicated indoor facility for lawn bowls with four to six greens as part of a multi-code sports hub facility.</p> <p>30. Develop a dedicated indoor facility for lawn bowls with four to six greens at a club site.</p> <p>31. Cost of covered greens estimated at \$1.5 million (Bowls Canterbury estimate)</p>
Motor Racing - Car	Ruapuna International Raceway	<p>Well-established venue for motor racing. Track needs full resurfacing to comply and existing hospitality and garaging are inadequate to meet needs.</p> <p>Not suitable for night operations due to lack of lighting, upgrading continually taking place. Owned by Canterbury Car Club on land leased from CCC.</p> <p>Issues with suitability for drag racing (lack of sufficient run-off at end) and direction of track racing different from drag racing.</p> <p>Increasing pressure from residential development around the site.</p> <p>Lease renewal needs to be completed.</p>	Track in need of total resurfacing but operational for short term with on-going repairs.	Various. Original usage dates back many years. Additional buildings and associated facilities with a range of construction dates.	Development plans are subject to either securing a long-term lease from Council or relocation to a new site. The Club's 50-year development plan for Ruapuna includes new pit lane garages and corporate facilities, storage places, workshops and motorsport gear shops, new spectator areas, improved safety, additional competitor facilities, new clubrooms and resurface track.	<p>32. Relocate to new motorsports park.</p> <p>33. Create an exclusion zone around Ruapuna it as the motor sports park for Christchurch.</p>

Sport	Facility	Issues / Limitations	Condition Description (fit for purpose)	Age of Facility	Plans	Options
Motor Racing - Karting	Carrs Roadway Kart Raceway	Noise complaint issues from neighbouring residents. A solution is being investigated to relocate the Kart Club in conjunction with on-going work on Ruapuna Raceway.  Only limitation is under City Plan -restricted to 118 race days per year. Lack of covered seating and garaging.	Raceway track assessed in 2005 by an independent consultant for the Kart Club. Results indicated that the track surface appears to be at the end of its life and will need to be re-surfaced within three to five years.	Original 400m sealed track built in 1964 but has undergone several changes, extending the track to 620m long. Club rooms built in 1974 and extended in the early 1980s.	Plan to upgrade and extend track and facilities but building consent application (lodged July 2006) currently on hold pending required discharge consent from ECan. Option to remain in current location not suitable if surrounding area is rezoned residential under Awatea Plan Change. Negotiations to relocate on-going.	34. Relocate to new motorsports park.
Motor Racing - Motorbike	Ruapuna Raceway	See issues relating to use of Ruapuna Raceway.	See above Motor Racing - Car	See above Motor Racing - Car		35. Relocate to new motor sports park.
Motor Racing - Speedway	Ruapuna park and Woodford Glen Speedway	See issues relating to use of Ruapuna Raceway.	Purpose-built speedway circuit at Ruapuna. Fit for purpose. Woodford Glen outside CCC boundary areas.	Christchurch Speedway opened 1962.  Woodford Glen Speedway opened in 1974.		36. Christchurch Speedway: relocate to new motor sports park.  37. Noise mitigation measures in conjunction with Ruapuna raceway.
Netball	Christchurch Netball Centre	Christchurch Netball Centre needs to relocate netball activity away from Hagley Park because it is not consistent with Hagley Park as the major green space in the city (as per latest Management Plan). High-performance netball is now played on sprung floors in indoor facilities around the country. Most netball centres now play at least Premier club	Existing playing surface in Hagley Park is in need of repair, (Netball currently resurfacing three courts). The training lights are inadequate and parking is difficult during peak times. The Centre is in good condition. Courts need major repair work to continue to function short	Courts - lease for grounds signed in 1977. Pavilion built in 1990s.	Christchurch Netball Centre need to relocate netball activity away from Hagley Park, including replacement of 40 outdoor courts and an indoor four to five-court facility. Research by netball has	38. Relocate netball to single complex of outdoor and indoor courts at Addington Raceway.  39. Convert existing netball courts and

Sport	Facility	Issues / Limitations	Condition Description (fit for purpose)	Age of Facility	Plans	Options
		<p>league with all netball in Dunedin and Invercargill being played indoors. Christchurch Netball Centre is increasingly moving indoors and this is placing pressure on the limited indoor court capacity in the city. Greater indoor court capacity for netball is essential to maintain the competitiveness of representative teams and to grow the sport. The move of netball indoors coupled with the growth in popularity of basketball has generated demand for an additional indoor court facility and the potential for conflict between the sports over access to courts.</p> <p>The Skope Tactix franchise and Canterbury Netball need an alternative venue in the city to the Westpac Arena because of its track record of unavailability due to prior bookings. A mid-sized arena would provide the alternative venue and would also be more appropriate to host games that will attract a sizeable audience but one not large enough to warrant the expense of using the Westpac Arena. Average attendance at the former Flames games is about 2250 with a peak last year of 6000 for Sting game.</p> <p>The Christchurch Netball Centre has been unable to host National Netball Championships or Age Group Championships for more than 10 years because of the lack of a compliant multi-court facility in the city. A minimum of three Netball New Zealand compliant courts are required in a single venue.</p>	<p>term and will need to be totally resurfaced and re-spaced if staying long term.</p>		<p>identified Addington Raceway as clearly the best site. Addington Raceway is preferred because of its plentiful parking, central location and being on the Orbiter bus route as well at the junction with other major bus routes. There will be in excess of 10,000 netball players and supporters using the complex each week during the season. The outdoor courts can be developed on land as an easement for provision of parking required as part of the resource consent for the Raceway. This would create a dual use of this valuable land, returning greater value to the city. Netball could provide the on-going occupancy for the indoor courts of a mid-sized arena facility to enhance its viability and value to the city.</p>	<p>pavilion at Hagley Park to alternative use consistent with the Hagley Park Management Plan.</p>
Rugby		<p>The Crusaders rugby franchise does not have an alternative venue to AMI Stadium within the franchise region that complies with Super 14 venue requirements for timing clashes. There is a risk that a cricket one-day international could force the franchise to use a venue outside Christchurch to host a game scheduled for the same time period. A second smaller arena that complies with Super 14</p>	<p>AMI Stadium fit for purpose.</p>	<p>N/A</p>	<p>The CRFU is reviewing its facility and infrastructure needs including its administration headquarters facility and its high-performance centre.</p>	<p>40. The QEII Outdoor Stadium could become the alternative stadium if the AMI Stadium is unavailable. 41. The high-</p>

Sport	Facility	Issues / Limitations	Condition Description (fit for purpose)	Age of Facility	Plans	Options
		<p>requirements with a preferred capacity of 25,000 (minimum 20,000) is needed. It should be noted that the current seated capacity of the QEII Outdoor Stadium at 14,000 with maximum of 18,000 spectators in the arena far exceeds the capacity of venues in Nelson, Blenheim and Timaru. The Outdoor Stadium venue could also be used for Canterbury NPC games and other CRFU games, such as representative and club finals, if required.</p> <p>The high-performance centre for Crusaders franchise and CRFU is based at Rugby Park.</p> <p>The administration headquarters has had to be relocated into temporary accommodation on a four-year lease to enable the redevelopment of AMI Stadium.</p>				<p>performance centre could be relocated to QEII is suitable facilities were available or remain at Rugby Park.</p>
Rugby league	Rugby League Park	<p>Canterbury Rugby League (CRL) is rebuilding its club strength through the introduction of age group competitions, development of an Academy for high-performance players based on the successful WELTEC model in the Hutt Valley and a franchise team in the future. CRL has had a long-standing association with Rugby League Park. Council purchased Rugby League Park from the A&amp;P Association in the early 1990s. The CRL lease from Christchurch City Council is due for renewal in 2012. CRL has invested significantly in grandstand and ancillary facilities during that time. However, these facilities are ageing and do not meet current needs of rugby league. RLP as a current capacity for about 7200 spectators. The No. 1 grandstand has capacity for 2600 seated spectators and No. 2 has 1520 seats, making a total of 4120 seated and space for another 3000 standing on the terraces. This is seen as an appropriate capacity by CRL.</p> <p>CRL is looking to showcase the sport through attracting the Warriors to play a trial game, as well as other high-profile games.</p>	Grandstand No. 2 condemned, major maintenance work completed on plumbing issues, new carpet installed upstairs and on-going maintenance of grounds is a priority	Formerly the Addington Showgrounds have been home of Rugby League since 1970's	<p>CRL is looking to the future and the potential redevelopment of Rugby League Park during the next five years as a second-tier Stadium. This is the preferred option. It has also considered a green fields development at Canterbury Park with a 5000 seat arena and similar mix of facilities to those currently at Rugby League Park. QEII was considered too far away from the traditional player and supporter base.</p> <p>A mid-sized arena would be suitable for use by any CRL franchise that may be established in the future and to host showcase games such as the NRL games involving the Warriors. Rugby League have indicated that a stadium with 10,000</p>	<p>42. The QEII Outdoor Stadium could become the home for several sports teams including a rugby league franchise. Current seated capacity of the Outdoor Stadium is estimated at 14,000, with a maximum of 18,000 spectators in the arena. This would be ample space for rugby league.</p> <p>43. The QEII Outdoor Stadium or a redeveloped QEII No.2 arena with 3000 seated capacity could</p>

Sport	Facility	Issues / Limitations	Condition Description (fit for purpose)	Age of Facility	Plans	Options
					capacity is needed.	<p>become the home of CRL as well as the base for an Academy.</p> <p>44. Rugby League Park is fee simple land able to be sold by Council or leased for a commercial return. This could provide capital or revenue to finance a metropolitan sport facility development elsewhere in the city for use by CRL and other sports.</p>
Shooting	McLean's Island Range	<p>About five years ago, the re-zoning of land behind the shooting range left the range with the lack of a properly gazetted safety zone.</p> <p>This resulted in the cessation of shooting for many of the clubs until a suitable alternative could be arranged.</p> <p>Council supported a number of enhancements to safety by way of loans and grants to the clubs to enable the facility to become usable once again.</p>	Once again fit for purpose but needs upgrade.	Build for 1974 Commonwealth Games.	Cost of upgrading safety features or cost of moving to a different range.	45. Status Quo.
Softball	Cuthberts Green (Smokefree Ballpark)	<p>Canterbury softball has averaged 4400 players over recent years with about two-thirds junior players.</p> <p>The headquarters and main playing complex of lime diamonds were developed at Cuthberts Green. This was completed in 1985. The facilities meet international standards, having hosted the 2004 World Championships. However, there are several design flaws that</p>	The facility is in reasonable condition, the upkeep is by the Canterbury Softball Association, and there are possible improvements to fencing and external ball park area planned.	1985	Refurbishment and development has been proposed by Canterbury Softball and include improved linkage of seating with the main pavilion, relocation of existing seating to the No.2 diamond and installation of new seating	46. Seeking a capital grant contribution from the Council. Estimated cost \$480,000.

Sport	Facility	Issues / Limitations	Condition Description (fit for purpose)	Age of Facility	Plans	Options
		<p>Canterbury Softball would like to remedy to enable the facilities to operate more effectively when hosting events.</p> <p>The Southern Cross challenge is a Southern Hemisphere International softball fixture being hosted on alternate years in Brisbane (2008) and Christchurch (2009). It is intended to become a permanent International softball event and through the memorandum of understanding can only be hosted in these two cities. This fixture is a significant factor in wanting to develop the Cuthberts Green softball facilities to international presentation standard.</p>			<p>for the No.1 diamond, extending the outdoor viewing area accessed from the Pavilion, consolidation of separate offices, creating a meeting room, and relocating the retail area to a more prominent location.</p>	
Squash	Squash Canterbury	<p>Squash Canterbury has 2060 registered members in the region with 14 clubs and five commercial complexes offering courts. A major issue is the attractiveness and quality of these facilities. Elsewhere in New Zealand, there has been an amalgamation of clubs and consolidation on larger complexes. Christchurch has had some clubs close in recent years.</p> <p>Christchurch lacks a proper glass-back viewing court with about 200 seats for events. This should be located at a super club site with the least four courts.</p> <p>In recent years, Squash has lost 12 courts to other uses at Pioneer, Sockburn and QEII multi-use public facilities. This has reduced visibility of the game.</p>	<p>Recently Squash Canterbury have taken up a lease for the Recreation Centre and existing squash courts at Sockburn.</p>		<p>Plans to refurbish and promote the centre. The centre would also be the high-performance centre of excellence for Squash in the region.</p>	<p>47. Sell or lease the Sockburn Recreation Centre to Squash Canterbury.</p> <p>48. Consolidation of squash activity on smaller number of larger complexes and disposal of redundant courts.</p> <p>49. Co-location of new squash facilities as part of a multi-code sports hub facility.</p>
Table Tennis	Table Tennis Canterbury Stadium	<p>Table Tennis Canterbury (TTC) registered membership is estimated at 237 members involved in interclub sport and 160 school children. Membership has decreased and there is a gap in the 20 to 40 age group range.</p> <p>TTC own their own building and the location is ideal as it is close to three schools, bus routes and accommodation, TTC have not plans to moving. The facility is quite specialised with</p>	<p>Old seed storage site fitted out for table tennis about 10 to 15 years ago. Fit for purpose.</p>	<p>Building shell unknown. Fitout about 10 to 15 years ago.</p>	<p>TTC have plans for internal improvements to the building but no extensions.</p>	<p>50. Status quo.</p>

Sport	Facility	Issues / Limitations	Condition Description (fit for purpose)	Age of Facility	Plans	Options
		<p>low lighting and special flooring. There is currently 17 tables and the facility incorporates the Poultry Club which also uses the building. The venue can host national tournaments, including South Island Championships and New Zealand Vets.</p>				
Tennis	Wilding Park Tennis - Indoor Centre	<p>Canterbury tennis has experienced strong growth in junior numbers was about 800 junior teams, the same as Auckland, Wellington and North Harbour combined. Finding sufficient courts to accommodate these teams is a constant challenge.</p> <p>Canterbury Tennis owns and operates Wilding Park tennis centre which includes six indoor courts and 39 outdoor courts, as well as administration and ancillary facilities on a large (12-acre) site. It has extensive parking. The facility operates 15 hours per day, seven days a week.</p> <p>High-performance training needs to be located at Wilding Park due to the facilities available on the site.</p>	Fit for purpose. Opportunities to expand or provide partnership opportunities with other sports facility development exist.		<p>Canterbury Tennis is aware of the proposed relocation of netball away from Hagley Park and suggests that 16 to 20 of the proposed new outdoor courts could be shared with netball and marked with dual lines. If courts are retained at Hagley Park, that these are fenced and marked for tennis as well as netball.</p> <p>Canterbury Tennis is open to sharing the Wilding Park facilities with other sports.</p>	<p>51. Allocate about half of the new outdoor courts for exclusive use by netball, with the balance shared with junior tennis.</p> <p>52. Redevelop a limited number of outdoor courts for tennis and netball at Hagley Park currently netball courts.</p> <p>53. Explore opportunities to co-locate other sports at Wilding Park to create a sports hub.</p>
Volleyball	Pioneer Sports Stadium	<p>Volleyball has 4500 registered players mostly based in Christchurch and mostly of school age. The existing indoor facilities in Christchurch could provide for the current needs of volleyball if the courts were configured appropriately and other users (primarily basketball and netball) have alternative venues to alleviate the increasing competition for court space at Pioneer, Cowles and QEII stadiums. Volleyball is unable to meet demand for courts and is not actively promoting the sport because of the city-wide shortage in capacity. Pioneer Stadium is the main venue for Canterbury Volleyball for city-wide or larger events. A drawback of the facility in the event mode when using all six</p>	Fit for purpose for volleyball but lack of seating capacity or lack of court capacity if providing seating in certain configurations.	Opened in 1978. Major upgrade in 1999.	Canterbury Volleyball is advocating for development of a multi-sport stadium capable of hosting national and international events able to accommodate at least 12 volleyball courts. Development of such a facility would also relieve pressure on existing facilities and enable volleyball to expand.	54. Develop a multi-court facility with capacity for 12 volleyball courts to hosts international and national tournaments.

Sport	Facility	Issues / Limitations	Condition Description (fit for purpose)	Age of Facility	Plans	Options
		volleyball courts is the lack of spectator seating. Many other cities in New Zealand can offer facilities with 12 courts within a single complex. Canterbury Volleyball is required to use three to four venues to host national championships.				
Water sport –White-water Canoe	The Groynes	<p>The White-water Canoe Club has a city-wide membership and needs a site suitable for introductory kayaking/canoeing instruction on moving water. An investigation of the Groynes Recreation Reserve site by the White-water Canoe Club has revealed that it has the necessary attributes to establish a kayaking facility for use by both novice and experienced recreational kayakers.</p> <p>The Club needs:</p> <ul style="list-style-type: none"> <li>▪ A flat-water area where beginner kayakers would receive instruction and practice the basic kayaking paddling and manoeuvring skills.</li> <li>▪ A section of moving water for beginner kayakers receiving instruction and then in practicing and enhancing their skills.</li> <li>▪ A slalom gate above moving water where intermediate and advanced kayakers could practice and improve their kayaking skills.</li> <li>▪ A freestyle hydraulic feature for intermediate to advanced kayakers</li> </ul>	No suitable facility available within city boundary.	N/A	<p>An examination of the Groynes Recreation Reserve site conditions by the White-water Canoe Club has revealed that it has the necessary attributes to establish a kayaking facility for use by both novice and experienced recreational kayakers.</p> <p>This development would include:</p> <ul style="list-style-type: none"> <li>▪ A flat-water area 50m to 100m in size above the weir for beginner kayakers.</li> <li>▪ A 700m section of moving water between the Groynes weir and the pump house return channel primarily for beginner kayakers.</li> <li>▪ A slalom gate addition to a section of the moving water.</li> <li>▪ A freestyle hydraulic feature created immediately below the Groynes weir.</li> </ul>	55. Increasing kayaking/canoeing activity at the Groynes in relatively low cost option which will provide a valuable and safe recreational facility not only for dedicated kayakers/canoeist, but also the general public. Placement immediately below the recreational lake would be ideal.
Water sports – Flat-water Kayak Racing	Kerr's Reach	The Club has more than 500 members, membership having doubled since development of new off-river facility. The Club uses various sections of the Avon River for racing from the Fitzgerald Avenue Bridge to	New off-river facility, however silting, weeds and increasing use put pressure on suitability of the Avon as preferred location.	N/A	The Club is advocating for purchase of a second weed harvester and the dredging of the river to improve the water	56. Purpose-built lake development either at Henderson Basin or Lake Isaac is preferred

Sport	Facility	Issues / Limitations	Condition Description (fit for purpose)	Age of Facility	Plans	Options
		<p>the Estuary, but mostly Kerr's Reach. Problems with river weed and silting of the Avon River makes the river difficult to use at lower tide times. The Club is losing talented kayakers to other parts of the country because of weed drag even though the club has the best off-river facilities in the country.</p> <p>Kayak events use rowing courses for racing.</p>			<p>conditions. This will be an on-going problem.</p>	<p>permanent option.</p> <p>57. Improved weed control and dredging to manage these problems at Kerr's Reach on the Avon as interim option.</p>
<p>Water sports - Rowing</p>	<p>Kerr's Reach Avon River</p>	<p>Kerr's Reach is now used as a training course for rowing. However, Lake Hood currently used as training venue for elite rowers within Canterbury. They also extensively use QEII for high-performance athletes.</p> <p>The 1830m racing course at Kerr's Reach is not suitable for hosting national or international rowing events with bends, weed, tidal, width and length limitations.</p> <p>There are safety concerns because of congestion with multiple users. A shortfall in boat storage is an issue.</p>	<p>Used as the rowing course for 1974 Commonwealth Games. Recent investment in launch facilities has improved access to river but silting, weeds and increasing use put pressure on suitability of facility.</p>	<p>At least 35 years old.</p>	<p>Rowing support development of a purpose-built lake to provide a flat water competition course and training venue.</p>	<p>58. Purpose-built lake development either at Henderson Basin or Lake Isaac is the preferred permanent option.</p> <p>59. Improved weed control and dredging to manage these problems at Kerr's Reach on the Avon as an interim option.</p>

## Sports Membership Statistics

The statistics have been collected by Sport Canterbury and Christchurch City Council over the past 15 years. Please refer to the notes below when reading the tables.

Summer Sports1	1993-4	1994-5	1995-6	1996-7	1997-8	1998-9	1999-0	2000-1	2001-2	2002-3	2003-04	2004-05	2005-06	2006-07
Archery <sup>17</sup>	28	32	35	95	102	106	111	132	194	250	136	310	427	320/54
Athletics	2351	2246	1874	2340	2174	2021	2001	2263	2178	2165	2170	2861	2623	2813
Basketball - Summer League	432	466	576	450	463	471	476	485	495	504	528	656	592	660
BMX	102	120	118	97	126	131	143	130	95	110	124	172	134	
Cricket	6903	8092	7329	8009	7385	7363	7032	7177	7447	7764	9619	10794	11469	11469
Croquet	543	542	576	521	561	551	556	486	490	490	470	453	440	
Cycling <sup>6</sup>	510	580	585	575	559	540	549	290	247	243	280	216		586
Golf - Men's <sup>23</sup>	5016	6072	6589	7612	7800	7915	8002	8139	7656	7735	8459	8295	8705	9026
Golf - Women's <sup>7</sup>	3597	3608	3482	3514	3442	2930	3476	3432	3400	3376	3321	3388	3398	4021
Gymnastics <sup>19</sup>	418	421	469	606	651	687	694	939	1139	1465	1532	1673	1552	
Marching	257	317	321	331	287	296	304	250	207	200	280	300	322	
Orienteering <sup>8</sup>	121	140	115	172	206	206	225	238	290	284	259	262	245	254
Outdoor Bowls - Men	6226	6102	5884	5676	5414	5208	5018	4894	4704	4745	4480	4369	4286	4571
Outdoor Bowls - Women <sup>11</sup>	2712	2582	2510	2425	2379	2026	2032	1909	2236	2360	2242	2191	2219	2512
Parafed Canterbury	191	193	340	355	383	401	420	412	440	480	500	500	500	500
Rowing <sup>18</sup>	298	309	381	396	390	384	439	428	498	487	685	750	839	723
Sea Kayaking	132	143	151	149	153	158	161	160	195	195	230	260		
Softball	3668	3752	3780	4790	4814	4844	4709	4912	4927	4941	4841	4991	4800	4320
Summer Soccer <sup>13</sup>	561	576	589	604	638	641	646	480	480	480	480	480	176	700
Surf Life Saving	1206	1397	1076	889	891	897	1120	1298	1308	1394	1471	1464	1524	1531
Swimming <sup>9</sup>	1200	1105	1252	1291	1137	1012	973	1020	1059	1016	1010	1206	1329	1154
Tennis	5788	5446	5476	5391	5118	4894	4727	4641	5065	5446	5469	5263	5052	4955
Touch - Canterbury Assn	11500	12000	13000	15000	21000	21500	22000	18000	16000	11700	14600	15000	11340	14155
Touch - Unaffiliated Modules	2500	2800	2700	3000	2000	2000	1500	2000	3000	4500	4500	3300	6200	2560
Total - Summer Sports	56260	59041	59208	64288	68073	67182	67314	64115	63750	62330	67686	69154	68172	66510

Winter Sports <sup>1</sup>	1993	1994	1995	1996	1997	1998	1999	2000	2001	2002	2003	2004	2005
Badminton <sup>10</sup>	682	703	515	539	468	424	412	401	425	398	366	350	
Basketball - Winter League	2165	2471	2672	3025	3033	3041	3194	3347	3501	3614	3978	4260	48
Boxing	67	79	65	81	107	111	117	96	108	84	99	97	
Cross Country <sup>12</sup>	1109	1164	1060	1068	1071	1078	1096	1101	1159	923	959	934	9
Fencing	88	94	134	151	158	164	167	150	140	135			
Football <sup>15</sup>	5691	5691	5706	5704	5810	6513	8048	8255	9077	9802	9597	11553	112
Hockey	3174	3321	3374	3523	4014	4027	4039	4051	4051	4051	4051	4051	39
Ice Sports <sup>5</sup>	522	577	486	783	797	802	816	199	211	193	87	62	
Indoor Bowls	2892	2750	2636	2530	2390	2231	2081	1909	1841	1620	1597	1618	15
Netball - Men's	50	60	80	60	70	80	90	60	90	70	70	50	
Netball - Women's	7060	7060	7030	7140	7645	7300	7500	7240	7200	7660	7500	7500	70
Rugby League <sup>4</sup>	4506	4669	4796	3982	3986	2937	2203	2161	2199	1648	1824	1835	18
Rugby	8214	8433	8429	8400	8891	8951	8980	9068	9585	10142	9369	9853	97
Skiing	6680	6680	6846	7163	7701	7813	7914	7429	7621	7739			
Squash	3196	3020	2867	1925	1897	1876	1868	1965	2178	2327	2219	2018	18
Table Tennis	694	758	840	890	921	865	895	960	1060				
Volleyball	3330	3550	3560	3578	3386	3938	3570	3512	4314	4114	4066	4211	45
Total - Winter Sports	50120	51080	51096	50542	52345	52151	52990	51904	54760	54520	45782	48392	477
Total For Year	106380	110121	110304	114830	120418	119333	120304	116019	118510	116850	113468	117546	1159

Notes:

- 1 Figures represent Canterbury Area unless stated
- 2 Figures not reliable before 1996-97
- 3 Figures given for calendar year (2000-01 = 2000 calendar year etc)
- 4 Figures not reliable before 1998
- 5 Includes Curling, Figure Skating, Speed Skating, Ice Hockey
- 6 Includes Road Cycling and Mountain Biking
- 7 Includes all Canterbury District but does not include Juniors.
- 8 Figures are for calendar year (2000/01 = 2001 calendar year) - membership members as at end of calendar year
- 9 Figures for Registered Competitive and Non-Competitive Swimmers in Christchurch Clubs only

- 10 2001 Reflects a change in counting method - only small actual increase in playing numbers estimated
- 11 Change of counting practice in 2001 to include all members - not just full members
- 12 Includes all registered and non-registered runners plus an allowance (approx 100) for non-disclosed non-registered runners
- 13 Figures unreliable before 2000/01 - 2005/06 season was the 1st year Summer Soccer was held through Mainland Soccer (unsure where previous years figures came from)
- 14 Christchurch Clubs Only
- 15 Canterbury
- 16 Figures collected from Kaiapoi Club, City Club, North Avon Club and Rangiora Club for overall total.
- 17 Figures from 2003/04 calendar are based on the 2003 calendar year etc. Figures collected from AimTru, Christchurch Archery Club and ITS Archery as of 2003. Figures higher from AimTru as Secondary Schools registered through them. (as of 2003)
- 18 Must contact Canterbury Rowing mid April each year to get figures as figures are recorded on a day to day basis. Figure includes Active rowers, masters, officials, clubs etc.
- 19 Figures from 2000 on include - preschool, general gymnasts, competition gymnasts and registered coaches and officials. (not school participants)

*Figures in italic are estimated*