

14. 8. 2008

FENDALTON/WAIMAIRI COMMUNITY BOARD  
17 JUNE 2008

A meeting of the Fendalton/Waimairi Community Board  
was held on Tuesday 17 June 2008 at 4pm  
in the Board Room, Fendalton Service Centre.

**PRESENT:** Val Carter (Chairperson), Sally Buck, Faimeh Burke, Cheryl Colley,  
Jamie Gough, Mike Wall and Andrew Yoon.

**APOLOGIES:** Nil.

The Board reports that:

**PART A - REPORTS REQUIRING A COUNCIL DECISION**

**1. 10 WAIWETU STREET - DISPOSAL OF SURPLUS ROAD LAND**



<b>General Manager responsible:</b>	General Manager City Environment, DDI 941 8608
<b>Officer responsible:</b>	Unit Manager, Transport and Greenspace
<b>Author:</b>	Neera Vishnubhatla, Engineer (Information)

**PURPOSE OF REPORT**

1. The purpose of this report is to forward the Fendalton/Waimairi Community Board's recommendation to the Council to declare small parcels of road land occupied by adjoining owners surplus to the Council's requirements and commence Road Stopping outside 10 Waiwetū Street pursuant to Section 116 of the Public Works Act 1981. The parcels of road land to be declared surplus are as shown on the **attached** plan.
2. The Board initially decided to leave this report to lie on the table at the Board, but following further discussion at its meeting on 2 July 2008 when confirming its report to Council, the Board decided that as a Part A item it was more expedient for the Board to recommend that it supports the declaring of the road land surplus for disposal as recommended by staff, and recommend that the Council leave the report to lie on the table until the Council has resolved its policy position on these matters. This issue was highlighted by the earlier Board recommendation to Council regarding the area of road land outside 173 Clyde Road that was deferred at the Council meeting on 12 June 2008.

**EXECUTIVE SUMMARY**

3. Staff have received a request from the owner of 10 Waiwetū Street to purchase the land parcel identified as "Sec 3" in the **attached** plan.
4. This parcel of land, along with other parcels identified on the plan are occupied by the adjoining owners and are not publicly recognised as road space.
5. Waiwetū Street is classified as a local road. It was reconstructed in 2002 with flat kerb and channel generally 9 metres wide, with a very much improved street environment, berms, shrubs and trees.
6. A previous request was received from the owner of 4 Waiwetū Street to purchase road land in front of his property and this request was granted and the parcel of road land was stopped in 2001.
7. Waiwetū Street is a cul-de-sac and has little significance to the road network system. The street has been upgraded in 2002 and the expected life of the road is 80 years.

14. 8. 2008

**Fendalton/Waimairi Community Board 17.6.2008**

**1. Cont'd**

8. The sale of the identified parcels of land will create a uniform property boundary along Waiwetū Street.
9. Approval to proceed with the disposal of all parcels identified on the attached plan as "Sec 1 – 5", will allow staff to proceed with requests from adjoining owners as and when they arise.
10. The other option is to resume the road land, requiring the occupier to shift the fence, thus enabling the road users to enjoy the public space.

**FINANCIAL IMPLICATIONS**

11. There is no cost to the Council. The cost of disposal along with the associated fees for the road stopping process will be recovered from the applicant along with the income generated from the sale, which will accrue to the Council.

**Do the Recommendations of this Report Align with 2006-16 LTCCP budgets?**

12. Yes.

**LEGAL CONSIDERATIONS**

**13. *Section 116 Public Works Act 1981 – Stopping road***

This section states that subject to the consent in writing of the territorial authority and the owner(s) of the land adjoining the road proposed, then the road can be declared formally stopped by notice in the Gazette.

14. The public rights of pass and repass is not affected in this case.

**Have you considered the legal implications of the issue under consideration?**

15. Yes.

**ALIGNMENT WITH LTCCP AND ACTIVITY MANAGEMENT PLANS**

16. LTCCP page 152 "Streets and Transport Objectives" – to provide a sustainable network of streets.

**Do the recommendations of this report support a level of service or project in the 2006-16 LTCCP?**

17. Yes.

**ALIGNMENT WITH STRATEGIES**

18. This action is consistent with traffic objectives stated in the City Plan.

**Do the recommendations align with the Council's strategies?**

19. Yes.

**CONSULTATION FULFILMENT**

20. Not required.

Fendalton/Waimairi Community Board 17.6.2008

1. Cont'd

**STAFF RECOMMENDATION**

It is recommended that the Council:

- (a) Declare the parcel of the road land identified as "Sec 3" on the attached plan, as surplus to road requirements pursuant to Section 116 of the Public Works Act 1981, be stopped and disposed of to the adjoining land owner.
- (b) Declare the remaining parcels identified as "Secs 1, 2, 4 and 5" surplus to road requirements thus enabling staff to advise future applicants on the purchase of these parcels of road land with certainty.

**BOARD RECOMMENDATION**

That the Council:

- (a) Note that the Fendalton/Waimairi Community Board recommends that the parcel of the road land identified as "Sec 3" on the attached plan, be declared as surplus to road requirements pursuant to Section 116 of the Public Works Act 1981, be stopped and disposed of to the adjoining land owner.
- (b) Note that the Fendalton/Waimairi Community Board recommends that the remaining parcels identified as "Secs 1, 2, 4 and 5" be declared surplus to road requirements thus enabling staff to advise future applicants on the purchase of these parcels of road land with certainty.
- (c) Leave this matter to lie on the table at Council until the Council has resolved its policy position on these matters, as highlighted by the report on the disposal of surplus road land outside 173 Clyde Road, which was deferred by the Council at its meeting on 12 June 2008.

2. **SIGNALISED CROSSINGS BISHOPDALE AND WESTBURN PRIMARY SCHOOLS**



<b>General Manager responsible:</b>	General Manager City Environment, DDI 941-8656
<b>Officer responsible:</b>	Transport and Greenspace Unit Manager
<b>Author:</b>	Michael Thomson, Network Operations and Transport Systems

**PURPOSE OF REPORT**

- 1. The purpose of this report is to inform the Council of the outcome of the feasibility study for providing signalised pedestrian crossing facilities at Bishopdale and Westburn Schools and the costs, budget provision and priority implications for proceeding with the recommended works.

**EXECUTIVE SUMMARY**

- 2. Both Bishopdale and Westburn School communities have over several years raised concerns about the safety implications for their students crossing busy arterial roads to access the schools.
- 3. The Board allocated \$10,000 from its 2007/08 Project Funds to carry out an investigation study into the feasibility of installing a signalised pedestrian crossing facility outside Bishopdale and Westburn Primary Schools.
- 4. The Transport and Greenspace Networks Operation Team engaged ViaStrada (Traffic Engineering and Planning Consultants) to carry out the investigative study and the report for each location is attached (**Attachments 1 and 2**).
- 5. ViaStrada has carried out the feasibility studies purely from a technical perspective and the recommendations are those that will provide the most benefits to the school and the wider community.

**Fendalton/Waimairi Community Board 17.6.2008**

**2 Cont'd**

6. To implement the recommended facilities outlined in the ViaStrada reports will require an estimated budget of approximately \$500,000.
7. Neither of these projects is included in the LTCCP 2006-16. They have not been prioritised with other city-wide pedestrian and schools safety works, and funding has not been allocated to them from the \$350,000 per annum that is provided from the combined pedestrian and schools safety budget.

**FINANCIAL IMPLICATIONS**

8. The cost of the feasibility study (\$10,000) was funded from the Fendalton/Waimairi 2007/08 Project Funds. The recommendations of the feasibility study are estimated to cost \$500,000 and no funding has been allocated to undertake the work.

**Do the Recommendations of this Report Align with 2006-16 LTCCP budgets?**

9. Budget for these projects has not been allocated and therefore this work does not align with the 2006-16 LTCCP Budget.

**LEGAL CONSIDERATIONS**

10. The Land Transport Rules provide for the installation of traffic signals and signalised pedestrian crossings.

**Have you considered the legal implications of the issue under consideration?**

11. As above.

**ALIGNMENT WITH LTCCP AND ACTIVITY MANAGEMENT PLANS**

12. Aligns with the Streets and Transport activities by contributing to the Council's Community outcomes - Community and Safety.

**Do the recommendations of this report support a level of service or project in the 2006-16 LTCCP?**

13. This contributes to improve the level of service for pedestrian safety.

**ALIGNMENT WITH STRATEGIES**

14. The recommendations align with the Council's Road Safety and Pedestrian Strategies.

**Do the recommendations align with the Council's strategies?**

15. As above.

**CONSULTATION FULFILMENT**

16. Until budget has been allocated and this becomes part of the capital programme, no consultation will be undertaken.

**STAFF RECOMMENDATION**

It is recommended that the Council:

- (a) Receive the information.
- (b) That funding be increased to upgrade school crossing facilities citywide in the 2009-19 Long Term Council Community Plan.

Fendalton/Waimairi Community Board 17.6.2008

2 Cont'd

**BOARD RECOMMENDATION**

That the Council resolve:

- (b) That funding be increased to upgrade school crossing facilities citywide in the 2009-19 Long Term Council Community Plan (LTCCP).
- (c) That the signalised crossings for Bishopdale and Westburn Schools, as recommended in the Via Strada report prepared for the Board, be included in the LTCCP to be implemented as quickly as possible, with first priority given to Westburn Primary School and second priority to Bishopdale Primary School.

**BACKGROUND**

**Bishopdale Primary School**

- 17. Bishopdale School is located on Greers Road, a minor arterial road, and the school is currently accessed via a zebra crossing with a school patrol.
- 18. It is within a 40km/h school zone. This was one of the first 40km/h school speed zones in Christchurch and was implemented in January 2000. The school principal feels that many motorists ignore this speed limit.
- 19. There is no reported crash history for the site but conflicts have been reported by the school community.
- 20. Following suggestions from the Board, liaison with the school, research, surveys of pedestrian, cycle and traffic movements, and traffic engineering knowledge, three options were considered in the ViaStrada feasibility study. Full details of each option are in the report. (**Attachment 1**)
- 21. The recommendation and the most viable option in terms of safety and efficiency is to remove the zebra crossing and provide a signalised mid block crossing.
- 22. Operation of a signalised crossing is similar to that of a school patrol in terms of timing and it is considered unlikely that the queues experienced by motorists would be any greater with a signalised crossing than the current school patrol.
- 23. Removal of the zebra crossing should improve safety of pedestrians using the crossing point outside of school times.

**Westburn Primary School**

- 24. Westburn School is located on Waimairi Road, a minor arterial road, and the school is currently accessed via a zebra crossing with a school patrol.
- 25. It is within a 40km/h school zone which was implemented in October 2005. The school principal feels that many motorists ignore this speed limit.
- 26. There is no reported crash history for the site but conflicts have been reported by the school community.
- 27. Following suggestions from the Board, liaison with the school, research, surveys of pedestrian, cycle and traffic movements, and traffic engineering knowledge, four options were considered in the ViaStrada feasibility study. Full details of each option are in the report. (**Attachment 2**)
- 28. The recommendation and the most viable option in terms of safety and efficiency is to remove the zebra crossing and signalise the Greers/Waimairi Road intersection.
- 29. The signalisation of the intersection will provide pedestrians with a safe and efficient means of crossing the intersection and access to the school. It will benefit Westburn Primary School pupils and Burnside High School students, as well as the wider community.

**Fendalton/Waimairi Community Board 17.6.2008**

**2 Cont'd**

**FUNDING AND PRIORITISING IMPLICATIONS**

30. At present these two projects are not included in the 2006-2016 LTCCP and there is no funding allocated for implementing the recommendations for the new crossing facilities at Bishopdale and Westburn Primary Schools.
31. The estimated cost of signalising the Greers Road/Waimairi Road intersection and a mid block signalised pedestrian crossing on Greers Road at Bishopdale Primary School is approximately \$500,000. This estimate is based on the design, supervision and project management of the supply and installation of the signal equipment, realignment of the kerbs and the removal of the existing facilities.
32. The Council currently provides approximately \$350,000 per annum for pedestrian and school safety works. These safety works are categorised as pedestrian safety initiatives, road safety at the school gate, safe routes to school implementations, and new footpaths.
33. Approximately three projects are completed each year with the \$350,000 budget provided.
34. From time to time other pedestrian safety works have been undertaken with funding from the Community Board's discretionary funds.
35. The value of new pedestrian safety requests received each year exceeds the value of pedestrian facilities that can be provided from the allocated funding.
36. The current citywide data base for pedestrian safety works requests has 196 listed projects and the estimated cost of implementing these projects is approximately \$10 million.
37. A formal priority process has been developed for implementing the 40km/h school zones and these are funded from a separate budget. Both Bishopdale and Westburn Primary Schools have a 40km/h school zone.
38. New footpath requests also have a formal priority process in place but there is no formal process for prioritising road crossing facilities.
39. Currently, pedestrian/school road crossing facility related projects that maximise pedestrian and school safety objectives are recommended for funding.
40. There are 165 schools in Christchurch City with frontage to 290 roads.
41. Forty-one of these schools, including both Bishopdale and Westburn Primary Schools, have frontage to an arterial road where the volume of traffic is in excess of 10,000 vehicles per day. This figure does not include schools that have a signalised crossing facility.
42. To accurately prioritise which school frontage should have upgraded crossing facilities would require a similar analysis for all schools on busy arterials to that carried out at Bishopdale and Westburn Primary Schools.

**PART B – REPORTS FOR INFORMATION**

**3. DEPUTATIONS BY APPOINTMENT**



**3.1 TELUSA VEANIU**

Telusa Veaniu received a Youth Development Fund grant from the Board to compete in the New Zealand Touch Nationals in Wanganui as a member of the Canterbury Under 19 Boys Team. Telusa spoke to the Board about his experiences and reported that his team won the tournament. Telusa thanked the Board for its support.

14. 8. 2008

**Fendalton/Waimairi Community Board 17.6.2008**

**3 Cont'd**

**3.2 NICKI MCFADZIEN**

Nicki received a Youth Development Fund grant from the Board to represent New Zealand as a member of the secondary schools cross country team in the World Schools Cross Country Championships in the Czech Republic in April 2008. Nicki spoke to the Board about her experiences and reported that she finished fourth in her event and her team finished first overall. Nicki thanked the Board for its support.

**4. PRESENTATION OF PETITIONS**

Nil.

**5. NOTICES OF MOTION**

Nil.

**6. CORRESPONDENCE**

Nil.

**7. BRIEFINGS**

Nil.

**8. COMMUNITY BOARD ADVISER UPDATE**

The Board **received** an update from the Community Board Adviser on forthcoming Board related activity over the coming weeks and on the status of the Board's funds.

**9. ELECTED MEMBERS' INFORMATION EXCHANGE**

Board members were provided with an opportunity to share issues of concern and in particular Sally Buck updated the Board with respect to the Council's submission on the Fencing of Swimming Pools Act Discussion Document.

**PART C – DELEGATED DECISIONS TAKEN BY THE BOARD**

**10. CONFIRMATION OF MEETING REPORT – 4 JUNE 2008**

The Board **resolved** that the reports of the Board's meeting of 4 June 2008 (both open and public excluded) be confirmed as true and accurate records of the meeting.

14. 8. 2008

**Fendalton/Waimairi Community Board 17.6.2008**

**11. WORKS, TRAFFIC AND ENVIRONMENT COMMITTEE MEETING – REPORT OF 26 MAY 2008**

The Board considered the report of its Works, Traffic and Environment Committee meeting of 26 May 2008 and **resolved** to:

**1. Ray Blank Park Tree Replacement Planting Plan**

- (a) Approve the Ray Blank Park Major Tree Replacement Planting Plan, as detailed in the report to the committee.
- (b) Approve the Capital Programme Group to commence implementation of the approved plan.

**2. Signalised Crossings Bishopdale and Westburn Primary Schools**

Receive the information from staff regarding the feasibility and costs of signalised crossings outside Bishopdale and Westburn Primary Schools.

Further recommendations to Council on this matter are detailed under clause 2 of this Board report.

**3. Knowles Street (Papanui Road - Bretts Road) Street Renewal Project - St Albans Creek Enhancement**

Approve the plan (shown in attachment 1 to the report to the Works, Traffic & Environment Committee) referred to as the Fencing and Viewing Option, to proceed to final design, tender and construction.

**12. COMMUNITY SERVICES COMMITTEE MEETING – REPORT OF 4 JUNE 2008**

The Board considered the report of its Community Services Committee meeting of 4 June 2008 **and** a Board Funding Update memorandum dated 17 June 2008 from the Community Board Adviser identifying further unspent Board funds, and **resolved** to:

**1. 2007/08 Project and Discretionary Funding – Allocation of Remaining Funds**

- (a) Approve the transfer of the remaining \$3,336 from the Community Board Planning Report project to the Discretionary Fund for reallocation.
- (b) Approve the transfer of the remaining \$3,973 from the Heritage Awards project to the Discretionary Fund for reallocation.
- (c) Approve the transfer of the remaining \$1,108 from the Neighbourhood Week project to the Discretionary Fund for reallocation.
- (d) Approve the transfer of the remaining \$1,300 from the Community Pride Garden Awards project to the Discretionary Fund for reallocation.



## Fendalton/Waimairi Community Board 17.6.2008

## 12 Cont'd

- (e) Approve the transfer of \$700 from the Discretionary Fund to the Youth Development Fund to cover the Youth Development grants approved as detailed in the table below:

Thomas Davis	Travel to the United Kingdom in July to attend workshops, talkshops, productions, a Shakespeare rally, and to be taught by a Globe Education Director on 'A Midsummer Night's Dream' culminating in a public performance on The Globe Stage.	\$600
Nieka George	To attend a six-day Girl Guide Summer Camp in July 2008, followed by an eight-day International Girl Scout Camporee.	\$600
Michael Vink	To compete in the 2008 World Junior Track & Road Cycling Championships being held in South Africa, in July 2008.	\$600

- (f) Approve the remaining unspent Board funds of \$1,533, as identified in the memorandum from the Community Board Adviser, to be added to the Committee's recommended amount of \$5,000 for the Aorangi Primary School Diamond Project, to increase that allocation to a total of \$6,533.
- (g) Following the decisions in (a) to (f) above, approve the allocations from the 2007/08 Discretionary Fund, as detailed in the table below:

GROUP/ORGANISATION	PROGRAMME	AMOUNT (\$)
Big Brothers Big Sisters of Christchurch	Youth Mentoring Programme.	3,900
Kiwanis Club of Waimairi	Terrific Kids Awards.	300
YMCA Bishopdale	Installation of security cameras in Bishopdale YMCA carpark.	8,000
Breens Intermediate School	Extension of Harakeke Garden.	2,000
Merivale Precinct Society	Annual House Awards.	2,000
Presbyterian Support	Aorangi School Project Coordinator.	4,500
Aorangi Primary School	Diamond Project.	6,533

(Faimeh Burke declared a conflict of interest with respect to the funding application for the Merivale Precinct Society and took no part in the discussion or voting on this matter.)

## 2. Fendalton/Waimairi Small Projects Fund Assessment Committee 2008-2010

- (a) Establish the Fendalton/Waimairi Small Projects Fund Assessment Committee with the following Terms of Reference:
- (i) To recommend to the Community Board allocations for the "Small Projects Fund – Local" in line with Council Policy and the LTCCP.
  - (ii) To consist of all Community Board members with a term of three years, for the 2008-09, 2009-10 and 2010-11 funding rounds.
  - (iii) To include four community representatives with an initial term of two years for the 2008-09 and 2009-10 funding rounds.
- (b) Appoint all Fendalton/Waimairi Community Board members to the Fendalton/Waimairi Small Projects Fund Assessment Committee for the funding rounds 2008-09, 2009-10 and 2010-11.

14. 8. 2008

**Fendalton/Waimairi Community Board 17.6.2008**

**12 Cont'd**

- (c) Approve the following community representatives to be members of the Fendalton/Waimairi Small Projects Fund Assessment Committee for the period June 2008 to May 2010:
- Edward David Moyle
  - Lex Telfer
  - Edward William Cropley
  - Vicki Maree O'Grady.
- (d) Allow the Fendalton/Waimairi Small Projects Fund Assessment Committee to appoint a chairperson and deputy chairperson at its first meeting.
- (e) Set a quorum of five members, one of whom must be an elected member.

(Note: This item was considered in the Public Excluded session at the Community Services Committee meeting to protect the privacy of individuals involved, however, the Committee agreed that its recommendations would be forwarded to the Board in the open section, with any specific information relating to individuals removed.)

**13. KEEP NEW ZEALAND BEAUTIFUL CONFERENCE**

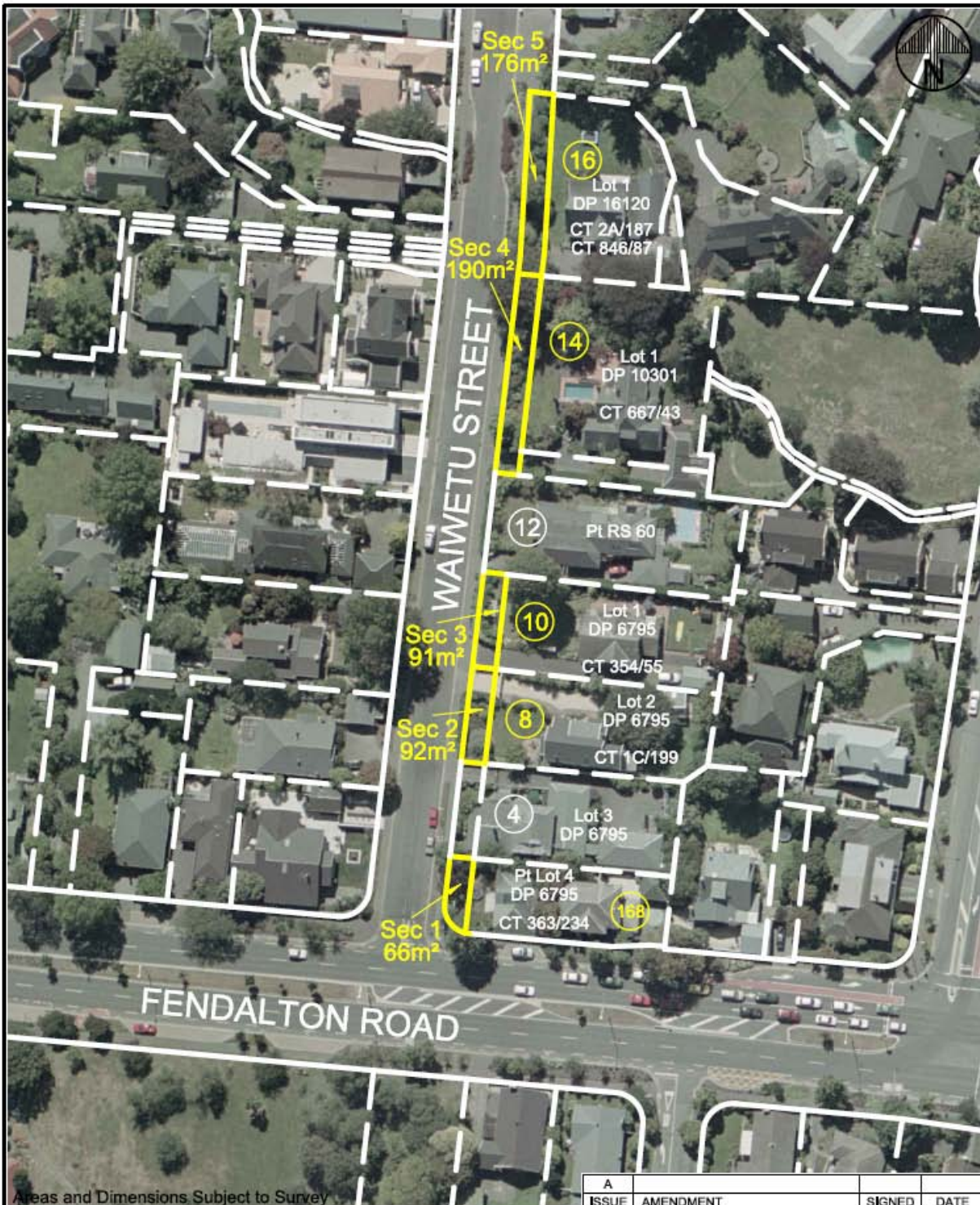
The Board considered a report seeking a Board decision on whether or not to approve funding for a Board member to attend the Keep New Zealand Beautiful Conference and Annual General Meeting in Dunedin and **resolved:**

That the Board approve funding for Jamie Gough to attend the Keep New Zealand Beautiful Conference in Dunedin from 19 to 21 September 2008.

The meeting concluded at 4.45pm.

**CONFIRMED THIS 2nd DAY OF JULY 2008**

**VAL CARTER  
CHAIRPERSON**



Areas and Dimensions Subject to Survey

A			
ISSUE	AMENDMENT	SIGNED	DATE

## ROAD TO BE STOPPED



**CHRISTCHURCH**  
CITY COUNCIL · YOUR PEOPLE · YOUR CITY

SURVEYED	
DRAWN	J Anderson
DATE	03/2008

DRAWING NUMBER	500790-01
FILE REFERENCE	500790

ORIGINAL SHEET SIZE	A4
SCALES	1:1000

© COPYRIGHT  
CHRISTCHURCH CITY COUNCIL  
AERIAL PHOTOGRAPHY © COPYRIGHT  
TERRALINK INTERNATIONAL LIMITED

PROJECT NUMBER  
**542/137/1/3**

SHEET  
1 OF