

**CHRISTCHURCH WEST MELTON WATER MANAGEMENT ZONE COMMITTEE  
THURSDAY 23 AUGUST 2012**

**A meeting of the Christchurch West Melton Water Management Zone Committee was held in  
The Boardroom, Fendalton Service Centre, on Thursday 23 August 2012 at 6pm**

**PRESENT:** Ian Fox, Community Representative (Chairperson)  
Deidre Francis, Community Representative (Deputy Chairperson)  
Jon Harding, Community Representative  
Councillor Debra Hasson, Selwyn District Council  
Hugh Thorpe, Community Representative  
Robert Wynn-Williams, Community Representative  
Ann Winstanley, Community Representative

**APOLOGIES:** Apologies for absences was received and accepted from Councillor Sally Buck,  
Commissioner Rex Williams, Yvette Couch Lewis and Arapata Reuben.

**1. CONFIRMATION OF MINUTES – 25 JULY 2012**

It was **decided** that the minutes of 25 July 2012 be approved as a true and accurate record of the meeting.

**2. DEPUTATIONS BY APPOINTMENT**

Nil.

**3. IDENTIFICATION OF URGENT ITEMS**

Nil.

**4. IDENTIFICATION OF GENERAL PUBLIC CONTRIBUTIONS**

Nil.

**5. REGIONAL COMMITTEE UPDATE**

The Committee was briefed by Jon Harding on items of relevance to the zone, arising from the latest meeting of the Regional Committee of the Canterbury Water Management Strategy.

A priority area of interest to the Zone Committee was nitrate high spots, and the Committee requested to consider the information on this matter that had been on the agenda for the Regional Committee.

**6. UPDATE ON ENVIRONMENT CANTERBURY POLLUTION PREVENTION WORK PROGRAMME**

The Committee received a presentation from Paul Gofton (Environment Canterbury) on Environment Canterbury's Pollution Prevention Work Programme (refer **attached**).

Key issues considered included:

- involvement of SKIRT in directing business services in relation to pollution prevention
- self regulation versus compliance monitoring
- stormwater facilities - retrofitting old subdivisions and the different issues with this compared to a new subdivision
- input to the draft ZIP – how the Committee can support the ongoing work of this unit.

**7. WETLANDS IN CANTERBURY**

The Committee was briefed by Tamsin Page and Philip Grove (both of Environment Canterbury), on wetlands in the context of the Canterbury Water Management Strategy (CWMS).

Key issues considered included:

- the incorporation of cultural significance, as well as ecological significance into the database
- how significant wetlands are defined
- landowner's awareness and the possibility on ongoing education programme alongside the farm management plans
- additional effort in the zone to identify and categorise wetlands, as smaller wetlands are not picked up.

**8. INDIGENOUS BIODIVERSITY HABITAT ANALYSIS**

The Committee reviewed the working draft ZIP content report from Mimouk Hannan (Environment Canterbury) related to indigenous biodiversity, on the basis of additional analysis provided by an expert panel on indigenous biodiversity habitats.

The Committee noted the information contained within the report, and agreed to hold a workshop on this subject. It was also noted that a map location would be useful.

**9. WORKING DRAFT ZIP (REVISED CONTENT)**

The Committee received a verbal update on the revised content for the working draft ZIP from Zone Facilitator, Matthew Ross.

The Committee noted the need for adequate time to work on the ZIP prior to the public meeting.

**10. WORK PROGRAMME TO ZIP**

The Committee noted the updated work programme to producing the Zone Implementation Programme (ZIP).

The Committee agreed to cancel the workshop scheduled for 30 August, and hold workshops on 12 and 13 September with the same content to ensure all of the Committee have an opportunity to attend.

**11. WAIMAKARIRI RIVER AND CHRISTCHURCH AQUIFER INTERACTIONS**

The Committee received a presentation from Paul White of GNS Taupo, regarding his knowledge of the interactions between the Waimakariri River and the Christchurch Aquifers / Groundwater Protection Zones.

Significant issues discussed included:

- Cumulative effect of taking water outside the Waimakariri River
- Ways of achieving objective of increasing sprint flow to reduce the amount extracted and the amount used per head
- Catchment of springs beyond zone boundaries – issue for discussion with Waimakariri Zone Committee Joint Meeting.

The meeting concluded at 9.56pm

**CONFIRMED THIS 27TH DAY OF SEPTEMBER 2012**

**IAN FOX  
CHAIRPERSON**

# Improving Urban Waterway Health Programme Update

By

Paul Gofton

Team Leader Implementation & Pollution Prevention

# Content

- **Recap on IUWHP**

- **Current initiatives & synergy with Draft ZIP**

What we're doing now & synergy with CWMZC Draft Zone Implementation Programme

- **2012-2013 proposed initiatives & synergy with Draft ZIP**

What we're planning & synergy with CWMZC Draft Zone Implementation Programme

- **Example of stream restoration project**  
(Lucas Creek, Albany)

# Improving Urban Waterway Health (IUWH)

**86%** of people say “Councils should tell us more about how we can better help to improve the health of our rivers, streams and waterways”

\*

**42%** didn't know what stormwater was

\*

Most people can name the Avon and Heathcote rivers, but less than **10%** could name any of the other 400 waterways in Christchurch

# IUWH Programme

- Able to adapt to work in varied catchments
- Mix of science and community engagement
- Several ECan departments working together
- Interagency group to develop common goals

# Improve ecological health of urban waterways by:

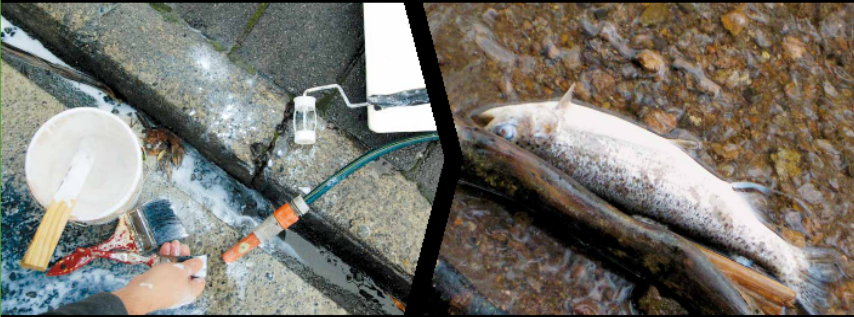


1. Increasing the level and effectiveness of urban community involvement in management and care of urban waterways.

# Improve ecological health of urban waterways by:

2. Increasing community knowledge, environmental awareness and responsibility with regards to the effect of individual and cumulative actions on urban waterways.

If you wash your brushes near a drain, that's not all you wash up.



Washing paint brushes into stormwater drains contributes to the pollution of our waterways. The paint chemicals are carried through a network of pipes, straight into the Avon, Heathcote and Styx and then into the sea. Play your part - make sure your paint doesn't pollute our waterways. Visit our website to get tips on how to dispose of paint properly. It's one way you can help keep our waterways clean.

**Christchurch Waterways**  
Let's change our ways,  
to change our waterways.  
[cleanwaterways.org.nz](http://cleanwaterways.org.nz)

Toi tā te marae o Tangaroa. Toi tā te marae o Tāne. Toi tā te iwi. If we look after the waters and land around us, we will be looked after in turn.



Everything is connected

Promoting quality of life through balanced resource management.

[www.ecan.govt.nz](http://www.ecan.govt.nz)



# Improve ecological health of urban waterways by:



3. More effective and proactive agency management of urban waterways through increased co-ordination and appropriate regulatory response.

# Component 1: General Awareness

**Everything you drop here, affects every drop here.**



When it rains, our stormwater system takes the rainwater from roofs, driveways, parks, streets and swales. The rainwater washes dropped litter down stormwater drains. That litter is carried through a network of pipes, straight into the Avon, Heathcote and Styx rivers and into the sea. Disposing of litter properly takes no effort, but it makes a big difference to our waterways.

**Christchurch Waterways**  
Let's change our ways,  
to change our waterways.  
[cleanwaterways.org.nz](http://cleanwaterways.org.nz)

Toi tū te marae o Tangaroa. Toi tū te marae o Tāne. Toi tū te iwi. *If we look after the waters and land around us, we will be looked after in turn.*

**Christchurch**  
City Council

 **Environment  
Canterbury  
Regional Council**  
Kaitiaki Take Kōwhiri

*Everything is connected*

*Promoting quality of life through balanced resource management.*  
[www.ecan.govt.nz](http://www.ecan.govt.nz)

# Current phase initiatives

What we've been doing & synergy with CWMZC  
Draft Zone Implementation Programme

## Key Principle

Better integration and collaboration

## Priority Outcomes

Involving local community groups in implementation

# Catchment Projects



**Pilot Project:  
Okeover Stream**



# Community awareness

## Okeover Stream

All water that falls in this catchment from roofs, roads, footpaths and residential car parks, drains untreated to the Okeover Stream. We need to keep our stormwater clean to keep our waterways clean.

NEVER WASH YOUR CAR ON THE DRIVEWAY

WASH YOUR CAR ON THE GRASS

**Domestic Sewer**  
Good physical environment. Habitat for low natural and there is predictable water flow. Some water is in ground but water quickly needs to improve to support a greater diversity of in-stream species.

**Epifaunal Shallow (flows only when it rains)**  
Removes stormwater from the surrounding suburban catchment. Partly piped, partly unlined and partly bare open channel. This works less your water quality which impacts on aquatic life.

**Stormwater versus Wastewater/flow:** when you flush your toilet, have a shower, or wash your dishes and laundry the wastewater goes to the sewer to be treated. When you wash your car on the driveway or the street, the water goes to stormwater and into the Okeover Stream.

Brought to you by Environment Canterbury working with

Environment  
Canterbury  
Council

# Current phase initiatives

What we've been doing & synergy with CWMZC  
Draft Zone Implementation Programme

## Priority Issue

- Improving surface water quality

## Priority Outcomes

- Industry actively helps to improve water quality in their local waterways
- Proactive pollution prevention activities
- Inputs of contaminants to waterways are minimised

# Industry training

## Erosion and Sediment Control Training Workshops



### Contractors and Consultants!

*Learn about the Erosion and Sediment Control Guidelines, and how to put them into practice in your day-to-day work to prevent waterway and dust-related pollution.*

**Enrol now!** Places are limited on the following workshops:

#### Introduction for Contractors

For those on earthwork sites who build, operate, maintain or decommission measures set out in erosion and sediment control plans.

Christchurch Tuesday 28th April

Cost: \$460 incl. gst  
(includes Guidelines and catering)

#### Chemical Use (Flocculants)

Focusing on the appropriate use, design and operation of flocculation systems.

Christchurch Wednesday 29th April, afternoon

Cost: \$140 incl. gst  
(includes catering)

#### Preparing Erosion & Sediment Control Plans

This is a more advanced course that concentrates on how to effectively develop erosion and sediment control plans.

Christchurch Thursday 30th April

Cost: \$285 incl. gst  
(includes Guidelines and catering)

*“An essential tool/must do” “Very practical” “An excellent workshop run by excellent presenters”  
- participants' comments*



**TO REGISTER** or find out more **CALL** (03) 353 9007 / 0800 32 46 36 or **VISIT** [www.ecan.govt.nz/escg](http://www.ecan.govt.nz/escg)

# Haytons Stream Catchment

Pollution Prevention team undertaking systematic approach to business activity & minimising impact on water quality.





# Effects on Heathcote River



Least impacted water quality: low concentrations of contaminants.



Elevated concentrations of zinc, including in stream sediments. The extensive areas of galvanised iron roofs in the mid- and lower catchment are likely to be the predominant sources.



Improved water quality due to dilution by 'cleaner' Paparua Stream water: e.g. lower concentrations of ammoniacal-N and DRP than in upper reaches of Haytons Stream

Sampling detected a pollution incident 22/7/09: the stream contained a white substance with elevated concentrations of TSS, ammoniacal-N & cBOD.

## Paparua Stream



Poorest water quality: for instance concentrations of ammoniacal-N well in excess of water quality guidelines, high concentrations of cBOD and presence of PAHs.

Waverley Road Drain

## Haytons Stream



Elevated concentrations of DRP (well in excess of water quality guidelines), downstream of fertiliser plant

Wigram retention basin: reduces concentrations of some contaminants; e.g. TSS, total metals, ammoniacal-N BUT concentrations of NOx-N increase



Impacts on Heathcote River: increased concentrations of ammoniacal-N, DRP, BOD and some metals downstream of Haytons Stream confluence

Haytons Drain



# Improving *urban waterway health*

Improving the water quality of Haytons and Papanua Streams  
and the Heathcote River in southwest Christchurch

*Information for at-risk businesses in the Haytons sub-catchment July 2010*



*Everything is connected*

# Targeted industry Awareness



**Help protect our waterways**

A brush or roller can be washed in a bucket or onto the lawn – it's a natural filter

Outside drains and gutters all go straight to our rivers and streams

"Keep it clean, out of the stream!"

See in store brochures for paint and wash-water disposal options.

Professional painters should speak to their trade outlet/paint suppliers for other options.

For further information go to: [cleanwaterways.org.nz](http://cleanwaterways.org.nz) or [www.facebook.com/ChristchurchCleanWaterways](http://www.facebook.com/ChristchurchCleanWaterways)

**Dulux** **Resene**

Environment Canterbury Regional Council

*Everything is connected*

In collaboration with:

Dulux

Resene

Master Painters NZ

Radio adverts will be continuing 2012 – 2013 period with 'burst' broadcasting.



# Review of 2011/12 programme

- ✓ Commissioned *Opinions* survey
- ✓ EIR database (Pollution Hotline complaint database) query.
- ✓ Feedback from internal & external stakeholders, including painters focus group.



**Waterways Awareness Research**  
**Prepared for Environment Canterbury**

June 2012  
Reference: 0512

# EIR Data

## Objective

**Establish base level data for trade waste discharges to demonstrate that an issue exists and industry is required to take appropriate action to manage waste streams.**

## Background

**The Environmental Incident Report (EIR) database records all the calls to the pollution hotline.**

## Method

**The database was interrogated to establish the quantity of reported incidents related to stormwater pollution from construction activities (paint wash, concrete wash, erosion & sediment, other construction). The remaining stormwater pollution incidents were also included for comparison (e.g. earthquake related, oil/fuel etc).**

**The first search covered the whole of 2011. The second and third searches represented the first 2 quarters of 2012 with the intention to run searches quarterly on an ongoing basis.**

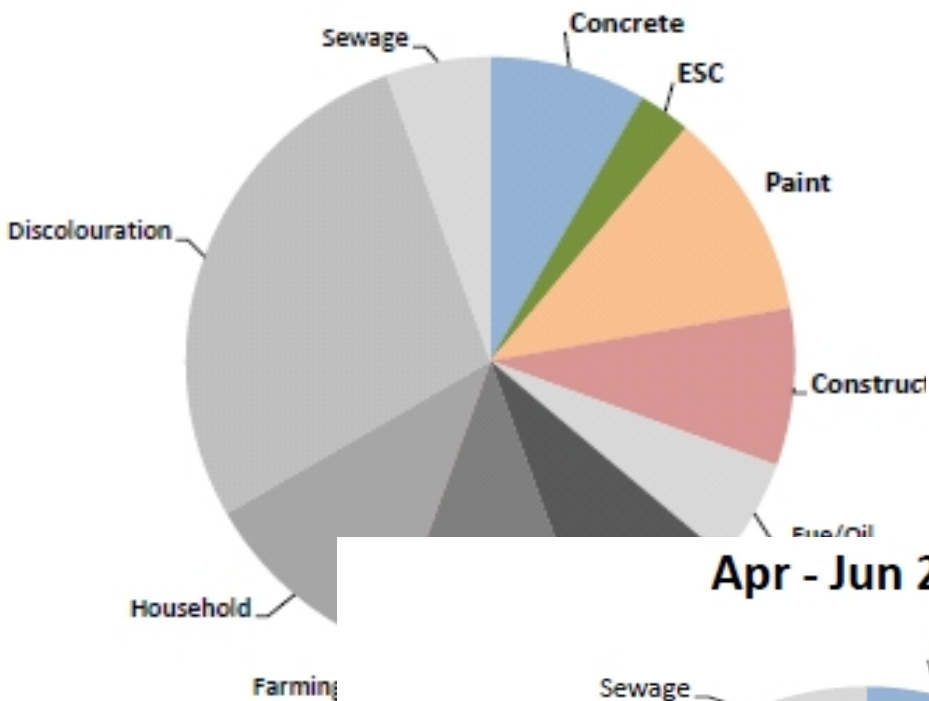
# EIR Database Query Results

## Incidents by type

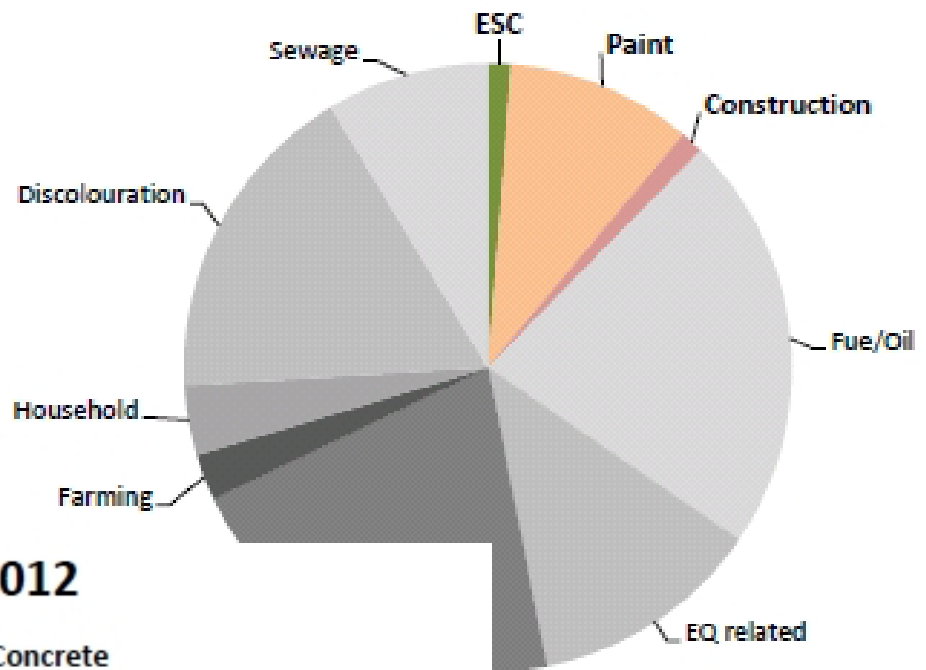
### Construction related      OTHER

Reporting Period	Total Incidents Reported	Construction related				OTHER						
		Concrete	ESC	Paint	Construction	Fuel/Oil	EQ related	Industrial	Farming	Household	Discolouration	Sewage
Jan - Dec 2011	88	0	1	8	1	18	10	17	2	3	14	7
Jan - Mar 2012	36	3	1	4	3	2	3	4	0	4	10	2
Apr - Jun 2012	39	3	4	1	2	7	0	10	1	1	5	5
Jul - Sep 2012												
Oct - Dec 2012												

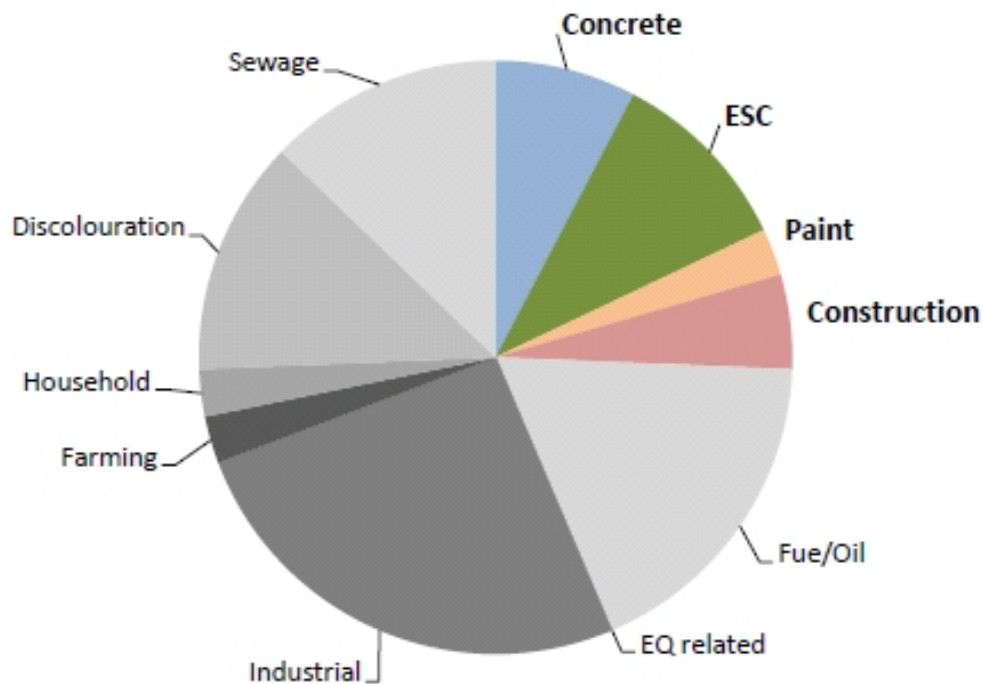
**Jan - Mar 2012**



**Jan - Dec 2011**



**Apr - Jun 2012**





# Conclusion

The search results show that in the first 6 months of 2012, more than twice the number of construction related pollution incidents have been reported than were reported in the whole of 2011 (21 from Jan-Jun 2012 compared with 10 for Jan-Dec 2011).

The results also show that in the first 6 months of 2012 construction related pollution incidents accounted for a greater proportion of all storm water pollution incidents than in 2011.

**\*Possible cause(s) of fluctuations in reporting:**

**\*scale & intensity of repair/rebuild programme?**

**\*seasonal conditions ?**

**\*success of radio advertising ?**

# Painters Focus Group - Results

- Not paid to clean brushes – have to clean up in own time at home address *“on the grass.”*
- No incentive/reason to change.
- Cost – not incorporated into tender process & current options too expensive.
- No easy place/location to clean brushes.
- Need *‘in your face’* advertising – tins & brushes.
- Heard radio adverts – need to appeal to 3 groups.
- No consequence for those who *“don’t play by the rules.”*

# Paint wash water project

## PAINT WASH WATER PROJECT

Project Lead Officer – Hannah Eastgate



### OBJECTIVES

1. Create widespread industry awareness of environmental best practice for managing paint waste.
2. All trade painters in Canterbury working to environmental best practice standards
3. Training on environmental management (including paint wash waste) permanently integrated into industry training programmes (eg Site Safe)
4. Paint wash waste forms part of an Environmental Policy required for all contractors working on the Canterbury Rebuild.
5. Line of sight with CERA Recovery Strategy, "N.E.R.P", ECan 2012 – 2022 Strategy and possible CWMS ZIP Objectives.

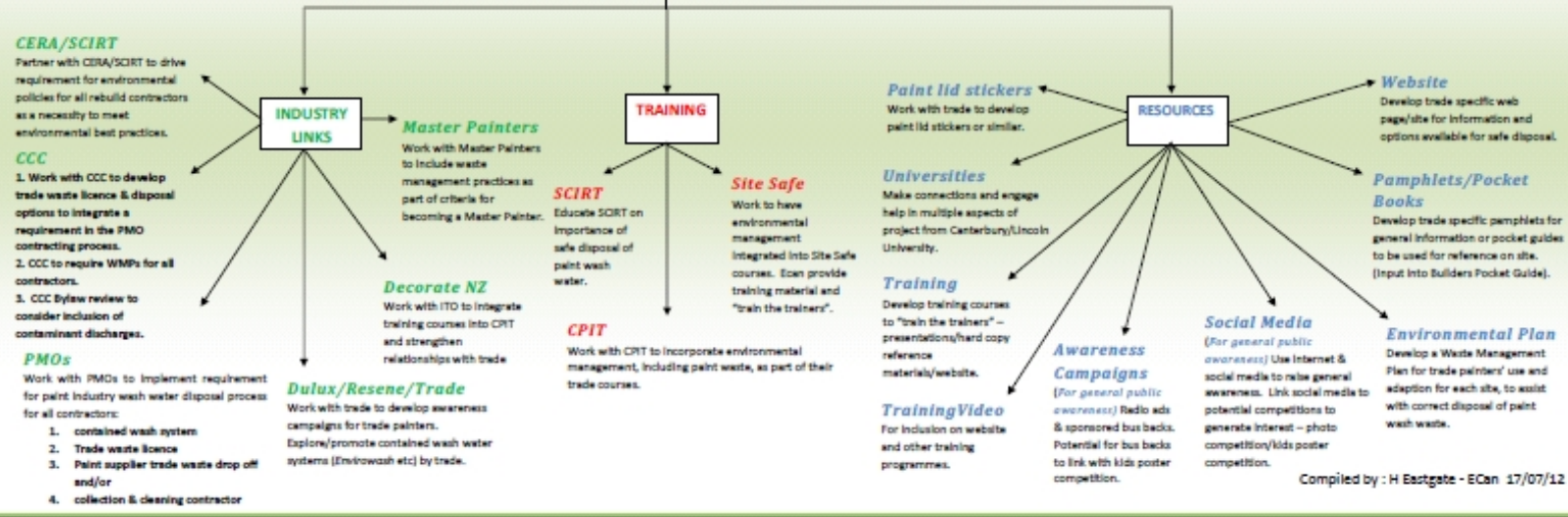
**Phase 1:**  
EDUCATION AND PROMOTION OF BEST PRACTICE FOR MANAGING PAINT WASTE  
Included:  
Pre-testing and evaluation, radio adverts, hard copy promo material and developing relationships with industry, CCC and ITD

**CERA Recovery Strategy:**  
Standards for waste management (including concrete & paint wash water) and erosion & sediment control in line with CERA recovery strategy 17.1 Objective 6.1. Ensuring recovery activities value, protect and sustainably manage the source of our water

## Phase 2: Target focus on Trade

\*Paint industry identified as high risk factor, due to the scale and intensity of the Canterbury Recovery programme - estimated 6000 painters will be working at the peak.

### KEY COMPONENTS



# Concrete wash water project



## CONCRETE WASTEWATER PROJECT

Project Lead Officer – Kevin Moran

**Canterbury Rebuild Project:**  
 Environmental Policies for:  
 - Waste management (including concrete & paint wash water)  
 - Erosion & sediment control

**CERA Recovery Strategy:**  
 Standards for waste management (including concrete & paint wash water) and erosion & sediment control in line with CERA recovery strategy 17.1 Objective 6.1. Ensuring recovery activities value, protect and sustainably manage the source of our water

### Target focus - Trade

EDUCATION AND PROMOTION OF BEST PRACTICE FOR MANAGING CONCRETE WASTEWATER  
 Included:  
 Pre-testing and evaluation, hard copy promo material and increasing awareness and use of BMPs through liaison with industry, CCC and PMOs

### OBJECTIVES

1. Raise awareness of the link between the stormwater network and surface water and the potential impacts of wastewater discharges.
2. Create widespread industry knowledge of environmental best practice for managing concrete wastewater.
3. All contractors working with concrete in Canterbury working to environmental best practice standards
4. Concrete wastewater forms part of an Environmental Policy required for all contractors working on the Canterbury Rebuild.
5. Be in line with CERA Recovery Strategy "N.E.R.P.", ECan 2012 – 2022 Strategy and CWMS ZIP Objectives.

### KEY COMPONENTS

#### CERA/SCIRT

Partner with CERA/SCIRT to drive requirement for environmental policies for all rebuild contractors as a necessity to meet their key goal.

#### CCC

1. CCC Trade waste options for contractors/waste water handlers
2. Investigate possible use of eco-depots or other sites to allow safe disposal of concrete wash water throughout CHOI.
3. Work with CCC to take enforcement action against contractors polluting stormwater.
4. CCC to require WMPs for all contractors to ensure appropriate methods being utilised for any work under their control.

#### PMOs

Work with PMOs (Arrow/Marceal/Hewkins/Fletcher) to identify and promote standard wastewater management solutions and to implement the requirement for appropriate concrete wastewater disposal for all contractors.

#### INDUSTRY LINKS

#### SCIRT

Partner with SCIRT to develop an agreed process for safe disposal of concrete wastewater which all staff will be trained in.

#### PMOs

Partner with PMOs to develop an agreed process for safe disposal of concrete wastewater which all staff will be trained in.

#### Site Safe

Work towards having environmental management integrated into Site Safe courses. ECan provide training material and "train the trainers".

#### TRAINING

#### CPIT

Work with CPIT to incorporate environmental management as part of their trade courses.

#### Awareness Campaigns

"Bumper stickers"  
 Trade/industry advertising.  
 Part of general IUWH programme.  
 Back of bus advertising & student input

#### University of Canterbury

Explore & develop opportunities to utilise UC expertise & resources to provide input to programmes

#### RESOURCES

#### Training Video

For inclusion on website and other training programmes

#### Website

Develop trade specific web page/site for information and options available for safe disposal.

#### Pamphlets/Pocket Books

Develop trade specific pamphlets for general information and input into builders pocket guide to be used for reference on site.

#### Environmental Plan

Develop a generic Environmental Plan that contractors can use and adapt for each site to assist with correct disposal of waste.



# Erosion & sediment control project



## Erosion and Sediment Control Project

Project Lead Officer – Jocelyn Muller

**Current Training**  
 Training workshops and guide provided by ECan for E&SC for:

- Earthworks site contractors
- Consultants/Local Authority Staff/Site managers
- E&SC Plans
- Chemical use

**CERA Recovery Strategy**  
 Standards for waste management (including concrete & paint wash water) and erosion & sediment control in line with CERA recovery strategy 37.1 Objective 6.1. Ensuring recovery activities value, protect and sustainably manage the sources of our water

### Erosion & Sediment Control (E&SC)

#### KEY COMPONENTS

**CERA/SCIRT**  
 Partner with CERA/SCIRT to drive requirement for erosion & sediment control plans for all rebuild contracts as a necessity to meet environmental best practices.

#### INDUSTRY LINKS

**Suppliers**  
 Liaise with industry to identify and promote most appropriate and environmentally sustainable materials & products.

**CCC**

1. CCC to require ESCs for all sites.
2. CCC to inspect, monitor & enforce ESCs
3. CCC to assist with awareness programmes.

**PMOs**

- + PMOs to implement requirement for E&SC training for all contractors
- + PMOs to implement requirement for E&SC plans for all sites

**SCIRT**  
 Partner with SCIRT on E&SC plans and training all staff

#### TRAINING

**Site Safe**  
 Work to have environmental management integrated into Site Safe courses. ECan provide training material and "train the trainers".

**Digger School**  
 Continue training with Christchurch Digger School & develop new training options (building apprenticeship input)

**Training workshops**  
 Continue ECan led training workshops for contractors and local authorities.

**E&SC Guidelines**  
 Continue with review of 2007 E&SC guidelines.

**Universities**  
 Explore & develop opportunities to utilise LIC expertise & resources to provide input to programmes

**Training Video**  
 For inclusion on website and other training programmes

#### RESOURCES

**Training**  
 Develop training courses to "train the trainers" – presentations/hard copy reference materials/website

**Template Erosion & Sediment Control Plan**  
 Develop a template E&SC Plan for contractors to use and adapt for small sites (less than 1500m<sup>2</sup>), to assist with correct E&SC.

**Pamphlets/Pocket Guides**  
 Develop trade specific pamphlets for general information or pocket guides to be used for reference on site. (Input into Builders Pocket Guide)

**SITE BOARDS**  
 Work with industry to develop site boards to be placed on every site with key information on E&SC measures on site (High risk issues: run-off, de-watering, dust)

**Website**  
 Develop trade specific web page(s) for information on E&SC.

#### OBJECTIVES

1. Create widespread industry awareness of environmental best practice for managing E&SC
2. All contractors in Canterbury working to environmental best practice standards
3. Training on environmental management (including E&SC practices) permanently integrated into industry training programmes (e.g. Site Safe or similar)
4. E&SC forms part of an Environmental Policy required for all contractors working on the Canterbury Rebuild.
5. Line of sight with CERA Recovery Strategy, "N.E.R.P", and ECan 2012 – 2022 Strategy and possible CWMS ZIP Objectives.

# Link to CERA Recovery Strategy

- **CERA Recovery Strategy:**
- Standards for waste management (including concrete & paint wash water) and erosion & sediment control in line

SECTION 04 Vision and Goals for the Recovery  
Ngā Wawata

**Vision**

**Greater Christchurch recovers and progresses as a place to be proud of – an attractive and vibrant place to live, work, visit and invest, mō tātou, ā, mō kā uri ā muri ake nei – for us and our children after us.**

Supporting this vision are the following goals, which relate to the six components of recovery.

The community is at the heart of the vision and the success of recovery.

**ECONOMIC**  
Restore greater Christchurch as the heart of a prosperous region for business, work, education, and increased investment in new activities.

**SOCIAL**  
Strengthen community resilience, safety and wellbeing, and enhance quality of life for residents and visitors.

**CULTURAL**  
Restore greater Christchurch's unique identity and its vitality supported through sport, recreation, arts, history, heritage and traditions.

**NATURAL**  
Restore the natural environment to support biodiversity and to reconnect people to the rivers, wetlands and Port Hills.

**BUILT**  
Develop resilient, cost-effective, accessible and integrated infrastructure, buildings, housing and transport networks.

**COMMUNITY**

**LEADERSHIP & INTEGRATION**

## 17.1 Natural environment goals

6. Restore the natural environment to support biodiversity and economic prosperity and to reconnect people to the rivers, wetlands and Port Hills - by:
  - 6.1 ensuring recovery activities value, protect and sustainably manage the sources of our water;
  - 6.2 ensuring ecosystems are healthy and functioning;
  - 6.3 improving the quality and function of estuaries, waterways and wetlands to support the unique biodiversity that is endemic to Te Waipounamu;
  - 6.4 providing public access to and opportunities for outdoor recreation, cultural, social and economic activities;
  - 6.5 enhancing air quality through managing recovery activities that impact on air quality, such as heating, transport, demolition and construction; and
  - 6.6 storing, sorting and processing waste in an environmentally safe and effective manner, including minimising and recycling construction and demolition wastes.

# Proposed 2012/13 initiatives & Links to Draft ZIP

## Priority issue

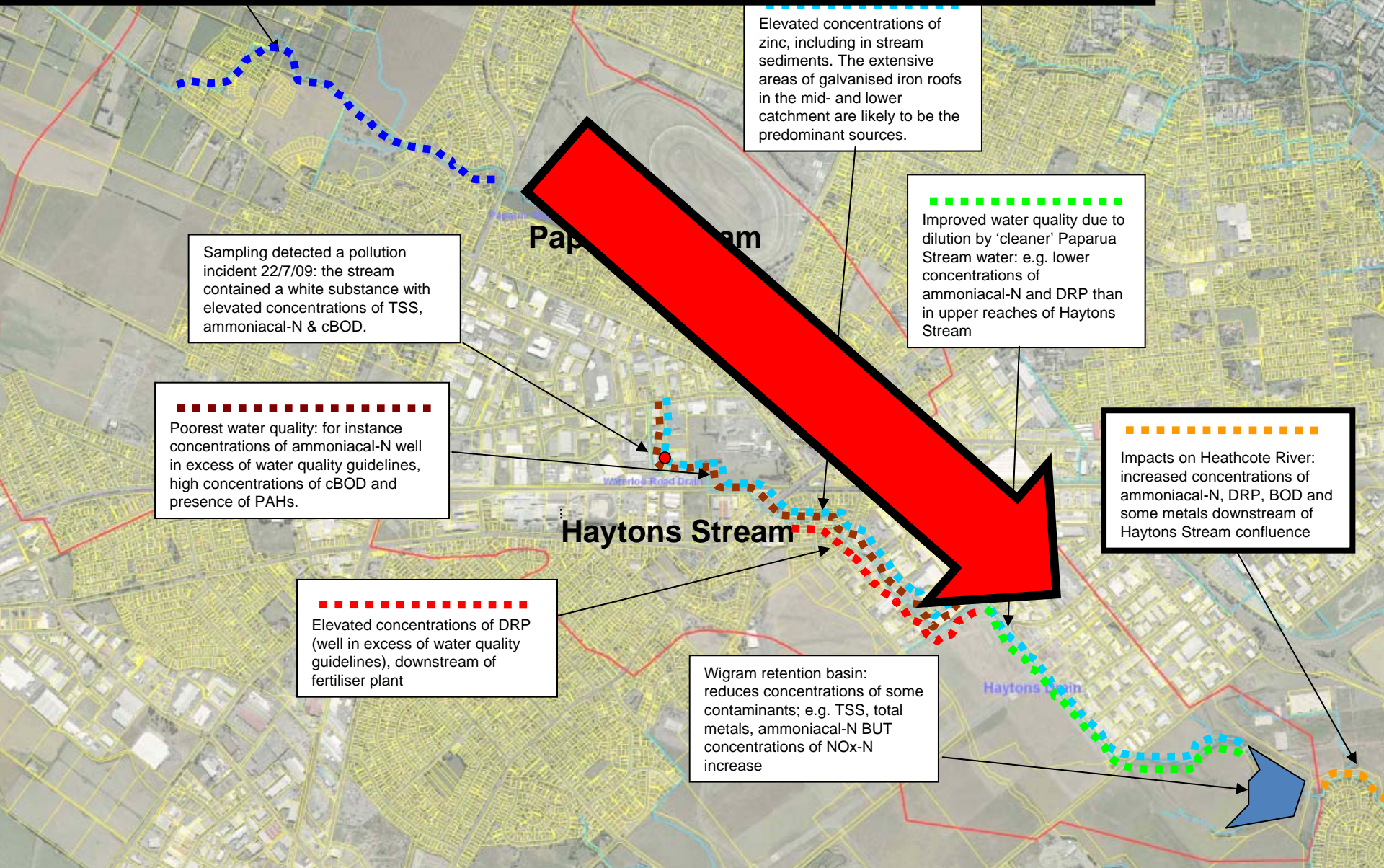
- Improving surface water quality

## Priority Outcomes

- Water quality is improved in all waterways & wetlands
- Industry actively helps to improve water quality in their local waterways
- Proactive pollution prevention activities
- Inputs of contaminants to waterways are minimised

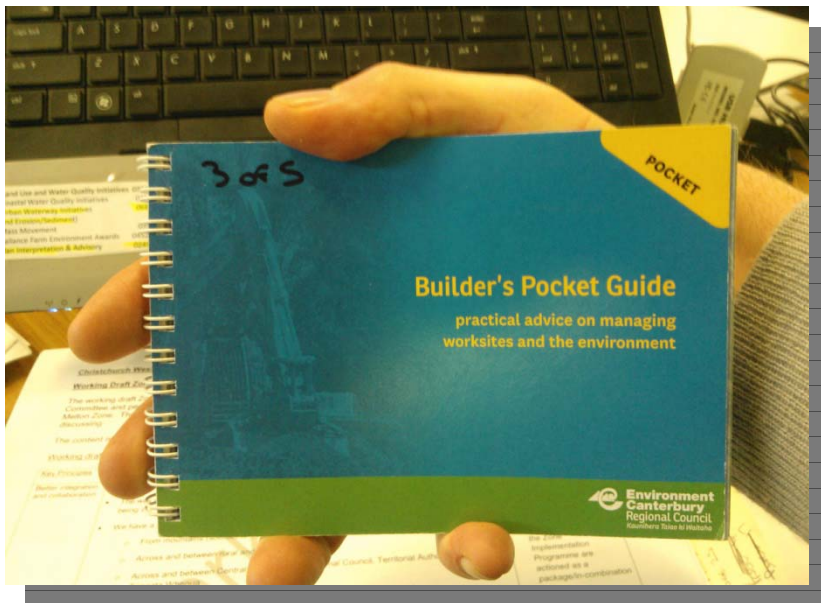
# Continuing Catchment Approach

Heathcote River





# Collaborating with Industry & TAs



## CONTRIBUTORS



SOUTHERN SKIES LOGO STILL TO COME:

## Objective/Goal:

**Mandatory Environmental Training Programme – all rebuild trades/staff**



# Environment Canterbury (ECan)

## Presentation to

# Arrow International

(Extract - delivered to 200+ contractors in  
August 2012)

By

Paul Gofton

Team Leader Implementation & Pollution Prevention

# *He Waka Eke Noa*

*“A boat on which we can all  
embark”*

*Or*

*“We’re all in this together”*

It's Just a bit of muddy water?



***If it looks wrong –  
it probably is..?***



# Stabilise

**Covering exposed areas with compost, wood mulch, gravel or seeding with hydro seed or grass if the area will be exposed for longer periods.**



# Silt fence and/or silt/compost sock



What if this dye was concrete wash water?



***If it looks wrong –  
it probably is..?***

# Contain Waste



 **MacDonald Gray**  
Driveway Specialists

m. 021 032 0001

e. [office@macdonaldgray.co.nz](mailto:office@macdonaldgray.co.nz)

**Environment  
Newbury  
Council**



# Capture & Collect Waste



 **MacDonald Gray**  
Driveway Specialists

m. 021 032 0001

e. [office@macdonaldgray.co.nz](mailto:office@macdonaldgray.co.nz)

# Clear Waste



 **MacDonald Gray**  
Driveway Specialists

m. 021 032 0001  
e. office@macdonaldgray.co.nz

**Environment  
Nelson  
Council**

It's Just a bit of paint wash water?



***If it looks wrong -  
it probably is...?***



**YOUR PROBLEM**

**YOUR RESPONSIBILITY!**

***Don't paint yourself into a corner***

# What are the current trade options?

## ✓ Wash up at your 'yard'

**NOTE:** you **MUST** have trade waste licence.

## ✓ Use a contained paint wash system

contact your paint supplier for options or develop your own?

## WHICH SYSTEM DO YOU USE?



# Help protect our waterways

**Professional painters must use a contained wash water system**

**Outside drains and gutters all go straight to our rivers and streams**

*"Keep it clean, out of the stream"*

**If you discharge trade waste (paint wash) in drains and gutters you could be fined or prosecuted.**

**See in-store brochure for paint and wash-water disposal options.**

For further information go to: [cleanwaterways.org.nz](http://cleanwaterways.org.nz) or [www.facebook.com/ChristchurchCleanWaterways](http://www.facebook.com/ChristchurchCleanWaterways)

**Dulux** **Resene**  
Worth doing worth 2-3x the paint the professionals use

**Master Painters**  
and joiners

**Environment Canterbury Regional Council**  
 Kaunhere Teke At Whaithe

*Everything is connected*

# Possible additional options (in progress):

- ✓ Paint wash water drop off points?  
(Paint supplier or CCC run eco depot)?
- ✓ Paint brush/roller pick up & drop off service?  
**WHICH SYSTEM WOULD YOU USE?**

\* Bonus outcome!

*Non-domestic users have implemented water efficiency plans to reduce consumption*

# Proposed 2012/13 initiatives

## Links to Draft ZIP

### Key Principle

Better integration and collaboration

### Priority Outcomes

- Involving local community groups in implementation
- Opportunities for Enviro-schools to be involved in local waterways



# Enviro-school input:

## *Opportunities for Enviro-schools to be involved in local waterways are investigated & supported*

- \* Schools provided information on awareness campaign
- \* Students asked to draw bus back “How they want Christchurch’s waterways to be...”
- \* Businesses ‘sponsor a winning design as a bus back’ (12 months)

**IT'S TIME TO TAKE ACTION!** 

Now that you know just how important keeping stormwater clean is, it's time to tell everyone else. Environment Canterbury wants you to help them get the message out there. So, they are running a poster competition.

**As big as a back end of a bus**  
That's right. The winning poster will be enlarged to fit on the back of a bus. That way EVERYONE in Christchurch will see your important stormwater message.  
Other prizes include worm farms, trees, and garden centre vouchers for your school and/or class.

**Your design needs to:**

1. Be bold and eye catching
2. Fit perfectly into the outline shape of the bus back on this page
3. Include a short, snappy slogan such as:
  - We're all in this together - He Waka Hei Nui
  - Our waterways need you
  - We're counting on you to help protect our waterways
  - Gutters & drains lead to rivers & streams

**Let's get thinking**  
"What do I want Christchurch waterways to look like?"

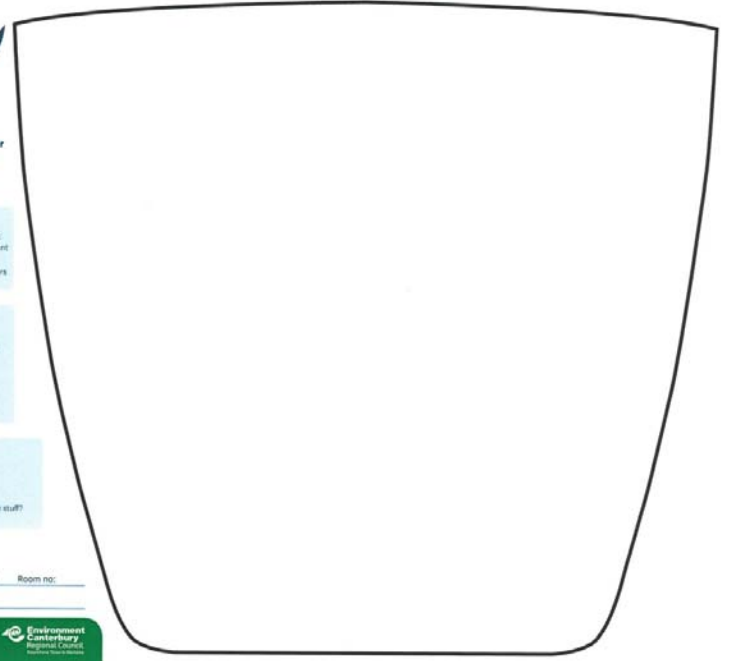
- Lots of green spaces and trees?
- A lot of biodiversity?
- People using the river for exploring, rowing, fishing and other fun stuff?
- Walking paths and/or bike paths?

Please fill in your details below:

Name: \_\_\_\_\_ Age: \_\_\_\_\_ Year: \_\_\_\_\_ Room no: \_\_\_\_\_  
School: \_\_\_\_\_ Teacher: \_\_\_\_\_

Everything is connected.  
Promoting quality of life through increased resource management.  
[www.ecan.govt.nz](http://www.ecan.govt.nz)

 Environment Canterbury  
Regional Council



**Be careful where you  
wash the car... you may be  
washing out the rivers.**



**Christchurch Waterways.**

Let's change our ways,  
to change our waterways.

[cleanwaterways.org.nz](http://cleanwaterways.org.nz)



# Youth Hui

# WaTER

## YOUTH HUI CANTERBURY WATER

Christchurch-West Melton Zone



Friday 24<sup>th</sup> August 2012



KO TE WAI TE ORA NGĀ MEA KATOA  
Water is the life giver of all things



## Erosion & Sediment Control

### SO what's the problem?

As the rebuild of Christchurch gets underway, thousands of building sites will require erosion and sediment control (ESC) measures to make sure sediment stays out of our waterways.

If sediment washes into our streams and rivers it can:

- Smother plants.
- Block channels (increasing the risk of flooding).
- Spoil the appearance and recreational value of the waterway.
- Destroy ecosystems through the gradual build up of silt.
- Provide particles for other pollutants to attach to.



### so what are we doing about it?

We have produced a comprehensive "Sediment Control Guide" and run training workshops for people involved in the earthworks industry. We are also producing training materials such as videos and a builder's pocket guide to help contractors when they're on a building site.

We are also working closely with construction companies working on the rebuild to give advice about effective ESC measures.

Best practices to prevent sediment getting into our waterways include:

- Minimising exposed areas
- Installing silt fences and earth bunds
- Stabilising entrances
- Diverting upstream water away from the site
- Protect the stormwater drain by surrounding it with a sediment sock/tube or sandbags

**Did you know...**  
Sediment is the most significant source of contamination to New Zealand's waterways.

<http://ccan.govt.nz/advice/your-land/works-soil-erosion/pages/soil-erosion-sediment-guidelines.aspx>

## The Pollution Prevention Programme

Environment Canterbury's Pollution Prevention Programme offers free assistance to businesses to help them improve their environmental performance and prevent pollution events.

The programme has a Pollution Prevention Guide, along with posters and action sheets to help with staff training and awareness. To help businesses further, Environment Canterbury has Pollution Prevention Officers available to offer advice to businesses and conduct a free site assessment to start the process off. This role is proactive, designed to work alongside industry, assisting in identification of issues and recommendations for potential improvements.



To date there are over **1600** businesses in Canterbury currently signed up for the Pollution Prevention Programme.

Every day business actions can impact on the environment, often without anyone knowing. The industrial sector is just part of the total pollution risk to Canterbury's environment but because many of the materials that industries use have the potential to cause environmental damage, the Region's businesses have a serious responsibility to prevent pollution.



Pollution prevention is a common-sense approach to environmental management. Being involved in the programme will offer businesses the following benefits:

- Reduced environmental liabilities
- Improved storage and handling practices
- Better maintained premises
- Reduced resource consent compliance monitoring costs
- Improved risk management
- Improved company image
- Access to helpful resources

<http://ccan.govt.nz/services/environmental-planning/pages/pollution-prevention.aspx>

# Implementation Team

**Currently heavily committed to impact(s) of  
Proposed Canterbury L&WRP**

- **Providing internal & external advice**
- **Working with planners to assist with regional roll-out programme.**
- **Submissions close on 5<sup>th</sup> October 2012**



# Restoration Projects - links to Draft Z I P

*We take opportunities created by the earthquakes to do things differently...*

## **Priority Issue**

- Enhancing waterways for recreation & relaxation
- Improving surface water quality...

## **Priority Outcomes**

- ✓ Access to waterway corridors is more people friendly
- ✓ Opportunities to rehabilitate or reinstate waterway corridors
- ✓ Riparian strips are reinstated
- ✓ In stream habitats are rehabilitated

