

SPREYDON/HEATHCOTE COMMUNITY BOARD

AGENDA

TUESDAY 19 MAY 2009

AT 5.00PM

AT BECKENHAM SERVICE CENTRE

**IN THE BOARDROOM,
66 COLOMBO STREET, CHRISTCHURCH**

Community Board: Phil Clearwater (Chairperson), Oscar Alpers, Barry Corbett, Chris Mene, Karolin Potter, Tim Scandrett and Sue Wells.

Community Board Adviser

Jenny Hughey

Telephone: 941-5108

Email: jenny.hughey@ccc.govt.nz

PART A - MATTERS REQUIRING A COUNCIL DECISION

PART B - REPORTS FOR INFORMATION

PART C - DELEGATED DECISIONS

INDEX

| | PAGE NO | CLAUSE | |
|---------------|--------------------|---------------|---|
| PART B | 3 | 1. | APOLOGIES |
| PART C | 3 | 2. | CONFIRMATION OF MEETING MINUTES – 1 MAY 2009 |
| PART B | 3 | 3. | DEPUTATIONS BY APPOINTMENT |
| | | 3.1 | Waltham School Pool Committee |
| | | 3.2 | Geoff Matthews |
| | | 3.3 | John Button |
| PART B | 3 | 4. | PETITIONS |
| PART B | 3 | 5. | NOTICE OF MOTIONS |
| PART B | 3 | 6. | CORRESPONDENCE |

| | PAGE NO | CLAUSE | |
|---------------|--------------------|---------------|--|
| PART B | 3 | 7. | BRIEFINGS |
| PART C | 7 | 8. | APPLICATION TO SPREYDON/HEATHCOTE COMMUNITY BOARD YOUTH ACHIEVEMENT SCHEME – KATARINA PARKER, KANEI JOHNSON, FREEDOM CASSIDY AND TIPENE CASSIDY-KUPENGA |
| PART C | 9 | 9. | APPLICATION TO SPREYDON/HEATHCOTE COMMUNITY BOARD YOUTH ACHIEVEMENT SCHEME – WEST SPREYDON SCHOOL POOL COMMITTEE |
| PART A | 13 | 10. | HAZELDEAN ROAD PROPOSED PROHIBITED TIMES ON ROAD |
| PART C | 17 | 11. | KINGSLEY STREET – PROPOSED P5 LOADING ZONES- GOODS VEHICLES ONLY AND P10 PARKING RESTRICTION |
| PART C | 21 | 12. | COLOMBO STREET PARKING RESTRICTIONS |
| PART A | 24 | 13. | MONTGOMERY SPUR RESERVE DRAFT MANAGEMENT PLAN |
| PART C | 27 | 14. | PROPOSED EASEMENT – LINDON GROVE SUBDIVISION STAGE 1 |
| PART C | 37 | 15. | VICTORIA PARK / ELIZABETH PARK/ SUGARLOAF SCENIC RESERVE – ORION CABLE EASEMENT |
| PART C | 41 | 16. | SPREYDON/HEATHCOTE COMMUNITY BOARD KEY LOCAL PROJECTS FOR 2009/10 |
| PART C | 45 | 17. | APPROVAL OF THE SPREYDON/HEATHCOTE COMMUNITY BOARD SUBMISSION TO THE DRAFT ENVIRONMENT CANTERBURY LONG TERM COUNCIL COMMUNITY PLAN 2009-19 |
| PART B | 48 | 18. | COMMUNITY BOARD ADVISERS' UPDATE 18.1 Tree Policy Working Party |
| PART B | 48 | 19. | ELECTED MEMBERS INFORMATION EXCHANGE |
| PART B | 48 | 20. | MEMBERS QUESTIONS |
| PART C | 48 | 21. | RESOLUTION TO EXCLUDE THE PUBLIC |

1. APOLOGIES

2. CONFIRMATION OF MEETING REPORT – 1 MAY 2009

The minutes of the Board's ordinary meeting of Friday 1 May 2009 are **attached**.

CHAIRPERSON'S RECOMMENDATION

That the minutes of the Board's meeting of 1 May 2009 be **confirmed**.

3. DEPUTATIONS BY APPOINTMENT

- 3.1 A member of the West Spreydon Pool Committee will outline their perspective in relation to the report seeking discretionary funding from the Board for the West Spreydon School Pool Committee.
- 3.2 Geoff Matthews is seeking Police support to enforce the By-law in relation to proposed prohibited times on Hazeldean Road.
- 3.3 John Button is objecting to P5 loading zone.

4. PETITIONS

5. NOTICE OF MOTION

The following Notice of Motion is submitted by Karolin Potter.

"That the Spreydon/Heathcote Community Board in recognition of the increasing diversity of its community and as a first step to having a range of art and craft works representing the many cultures in the Spreydon/Heathcote wards in the Service Centres' public spaces, authorises the framing of facsimile Treaty of Waitangi documents from the National Library at a cost of \$1,600 from its Discretionary Fund".

6. CORRESPONDENCE

Letter received from Environment Canterbury advising receipt of the Boards submission to the Draft Plan and the pending dates for hearings.

7. BRIEFINGS

19. 5. 2009

- 4 -

**SPREYDON/HEATHCOTE COMMUNITY BOARD
1 MAY 2009**

**Minutes of a meeting of the Spreydon/Heathcote Community Board
held on Friday 1 May 2009 at 8.05am
in the Boardroom, Beckenham Service Centre**

- PRESENT:** Phil Clearwater (Chairperson), Oscar Alpers, Barry Corbett, Chris Mene, Karolin Potter, Tim Scandrett, and Sue Wells.
- APOLOGIES:** Apologies for lateness were received and accepted from Oscar Alpers and Sue Wells.
- Oscar Alpers arrived at 8.07am during clause 10.
Sue Wells arrived at 8.14am during clause 6.

The Board reports that:

PART B - REPORTS FOR INFORMATION

1. DEPUTATIONS BY APPOINTMENT

Nil.

2. PETITIONS

Nil.

3. NOTICE OF MOTIONS

Nil.

4. CORRESPONDENCE

The Board **received** correspondence from Mr and Mrs Parish outlining their concerns with morning traffic flows in Merlewood Avenue, Cashmere.

The letter was referred to the appropriate staff.

5. BRIEFINGS

Nil.

6. APPROVAL OF THE SPREYDON/HEATHCOTE COMMUNITY BOARD SUBMISSION TO THE DRAFT CHRISTCHURCH CITY COUNCIL DRAFT LONG TERM COUNCIL COMMUNITY PLAN (LTCCP) 2009-19

The Board accepted the Spreydon/Heathcote Community Board's submission on the Draft Christchurch City Council Draft Long Term Council Community Plan (LTCCP) 2009-19.

It was **decided** that in speaking to the submission the Board Chair/representative should also refer to recent seminar information on the need for infrastructure planning for McVicars Forest Reserve above Worsley's Spur having priority over Montgomery Spur.

6 Cont'd

Furthermore, it was **decided** that the Board Chairperson/representative should support the Cashmere Residents' Association's submission for funding for traffic controls at the Dyers Pass Road / Cashmere Road / Centaurus Road intersection.

Furthermore, it was **decided** that in the Board's oral submissions on the LTCCP the matter of the reduction by \$1.5million from the Strengthening Communities Fund be raised if this situation does not change prior to the hearings, and the fact that the drop in funding is not flagged in the LTCCP documents which it should be as it is clearly a policy change of significance. Further, there is clearly a reduction in funds available to Community Boards to distribute and this too should have been alerted in the LTCCP document.

It was noted that Barry Corbett and Sue Wells took no part in the discussion or decision of this clause as there was a perceived conflict on interest as the matter is before the Council.

7. COMMUNITY BOARD ADVISER'S UPDATE

The Board **received** an update from the Community Board Adviser on forthcoming Board related activity over the coming weeks.

8. ELECTED MEMBERS INFORMATION EXCHANGE

Matters mentioned included:

- Update on progress on the Ernlea Clarke Reserve acquisition of adjoining land.
- Thanks were expressed to staff for their excellent job in organising the Port Hills Road/ Centaurus Road workshop on traffic and safety held on 29 April 2009, and follow-up was planned.
- Treaty of Waitangi papers to be framed for display on Service Centre walls.
- South West Area Plan was adopted by the Council.

9. MEMBERS QUESTIONS

Nil.

PART C - REPORT ON DELEGATED DECISIONS TAKEN BY THE BOARD

10. CONFIRMATION OF MEETING REPORT OF 14 APRIL 2009

The Board **resolved** that the minutes of the ordinary meeting of the Board held on 14 April 2009 be confirmed.

The Board noted the positive comments in the South West Community News made by former City Councillor Alex Clark in relation to the Addington Cluster Street Renewal project, and agreed to convey the Board's appreciation to Mr Clark for his comments.

19. 5. 2009

- 6 -

11. KIDSFIRST KINDERGARTEN EDIBLE AND NATIVE GARDEN

The Board considered a report seeking funding of \$3,395 for the Kidsfirst Kindergarten Hoon Hay by the Spreydon/Heathcote Community Board from its Discretionary Response Fund.

The Board **resolved** to grant \$3,045 from its 2008/09 Discretionary Response Fund to the Kidsfirst Kindergarten Hoon Hay towards the cost of the development of an edible and native garden at the Kidsfirst Kindergarten Hoon Hay.

The meeting concluded at 8.54am.

CONSIDERED THIS 19TH DAY OF MAY 2009

**PHIL CLEARWATER
CHAIRPERSON**

8. APPLICATION TO SPREYDON/HEATHCOTE COMMUNITY BOARD YOUTH ACHIEVEMENT SCHEME – KATARINA PARKER, KANEI JOHNSON, FREEDOM CASSIDY AND TIPENE CASSIDY-KUPENGA

| | |
|-------------------------------------|--|
| General Manager responsible: | General Manager, Community Services DDI 941 8607 |
| Officer responsible: | Recreation & Sports Unit Manager |
| Author: | Delia Walker, Community Recreation Adviser, DDI 941 5107 |

PURPOSE OF REPORT

1. The purpose of this report is to seek Community Board approval for funding four applicants from the 2008/2009 Spreydon/Heathcote Youth Achievement Scheme.

EXECUTIVE SUMMARY

2. Funding is being sought by 19 year old Katarina Parker and 21 year old Kanei Johnson, who both live in Addington, and 13 year old Freedom Cassidy and 14 year old Tipene Cassidy-Kupenga who both live in Somerfield. Katarina, Kanei, Freedom and Tipene are all members of Te Mana o Mareikura, Christchurch's Senior Maori Performing Arts Group who have been invited by The National Confederation of French Folklore Groups to tour France from 23 June 2009 – 21 July 2009.

BACKGROUND

3. Christchurch's Senior Maori Performing Arts group "Te Mana o Mareikura" have been invited by The National Confederation of French Folklore Groups to tour France for a month starting late June 2009. The confederation is recognised by the French Ministry of Youth and Culture and is looking forward to hosting Te Mana o Mareikura who will be representing New Zealand on the tour. The group will land in Paris on 24 June 2009 and travel to the festivals of Voiron and Bourg Saint Maurice - French Alps. Te Mana o Mareikura will also perform throughout the south-eastern part of France: Voiron, Grenoble, Crest, Thorens Gileres, Annecy, St Laurent du Point, Chambery, Moutiers, La Frette, Rives, Tournus. Performance environments include high schools, educational institutions, elderly homes, city theatres and outside festivals that attract thousands of people each year. The selected team of 30 have started training for the four week tour and will be performing traditional and contemporary brackets while in France.
4. A dress rehearsal starting 7pm on 15 June 2009 at the Te Rangimarie Centre in Christchurch is being organised. Supporters, sponsors and whanau of the tour are invited to view the performances that will be part of the month long tour.
5. Katarina, Kanei, Freedom and Tipene are four of 18 of the under 25 year olds selected for this tour who have applied to various Community Boards for funding for this tour. There are 30 people who have been selected for the tour in total. Katarina, Kanei, Freedom and Tipene are the only four of the 18 under 25 year olds who reside in the Spreydon/Heathcote ward area.

FINANCIAL IMPLICATIONS

6. This is the first time the applicants have applied for funding. Other group members are applying to their respective Community Boards.
7. Each group member must raise \$2,710 to pay for their flight ticket.
8. Te Mana o Mareikura has applied to the French Embassy Fund for \$35,000 and a decision regarding this is expected by the end of May (if successful this will result in a contribution of \$1,166 per individual). The group busk each Sunday and so far have raised over \$1,500 (\$50 per individual). Katarina, Kanei, Freedom and Tipene have contributed \$500 each of their own money towards the cost of this tour. In addition the group will be doing further fundraising including a \$10 a ticket production to be held on 25 April at the Te Rangimarie Centre, a \$100 gourmet drag cabaret dinner to be held on the 2 May at the MUU Bar featuring Miss Boomboom, and a \$5 Variety show will to be held on the 9 May 2009.

8 Cont'd.

9. There is currently a balance of \$1,400 in the Spreydon/Heathcote Youth Achievement Scheme Fund.

Do the Recommendations of this Report Align with 2006-16 LTCCP budgets?

10. Yes. Democracy and Governance section pages 113 and 115.

LEGAL CONSIDERATIONS

11. There are no legal issues to be considered.

Have you considered the legal implications of the issue under consideration?

12. Not applicable.

ALIGNMENT WITH LTCCP AND ACTIVITY MANAGEMENT PLANS

13. Yes. Democracy and Governance section, pages 113 and 115. Community Board Objectives 5 and 9.

Do the recommendations of this report support a level of service or project in the 2006-16 LTCCP?

14. Yes. As mentioned above.

ALIGNMENT WITH STRATEGIES

15. Application aligns with the Physical Recreation and Sport Strategy.

Do the recommendations align with the Council's strategies?

16. Yes. Application aligns with the Youth Strategy.

CONSULTATION FULFILMENT

17. Not applicable.

STAFF RECOMMENDATION

It is recommended that the Spreydon/Heathcote Community Board allocate \$100 each from the 2008/2009 Youth Achievement Scheme to Katarina Parker, Kanei Johnson, Freedom Cassidy and Tipene Cassidy-Kupenga to go towards costs for Katarina, Kanei, Freedom and Tipene to attend the festivals of Voiron and Bourg Saint Maurice and perform throughout the south-eastern part of France from 23 June – 21 July 2009.

CHAIRPERSONS' RECOMMENDATION

For discussion.

9. APPLICATION TO SPREYDON/HEATHCOTE COMMUNITY BOARD DISCRETIONARY FUND – WEST SPREYDON SCHOOL POOL COMMITTEE

| | |
|-------------------------------------|--|
| General Manager responsible: | General Manager, Community Services, DDI 941 8607 |
| Officer responsible: | Recreation & Sports Unit Manager |
| Author: | Delia Walker, Community Recreation Adviser, DDI 941 5107 |

PURPOSE OF REPORT

1. The purpose of this report is to present a request for funding from the West Spreydon School Pool Committee, from the 2008/2009 Spreydon/Heathcote Discretionary Fund.

EXECUTIVE SUMMARY

2. Funding of \$3,000 is being sought by the West Spreydon School Pool Committee to complete a feasibility study to assess the future viability of the West Spreydon School Pool.
3. The Christchurch City Council Recreation and Sports Unit has been aware of the West Spreydon School Pool situation over the past year. The Recreation and Sports Unit advise that whilst the Unit is happy to give advice on the condition of facilities, professional advice on the condition of Ministry of Education facilities is a core function of the Ministry of Education and not the responsibility of Christchurch City Council.

BACKGROUND

4. The West Spreydon School Pool was closed over the 2008/09 summer period due to the condition of the pool and the concerns of the school with regards to safety, supervision, management and vandalism over the holiday period.
5. The West Spreydon School Pool Committee was set up by the West Spreydon School Board of Trustees and exists to research and propose a strategic plan to keep the West Spreydon School pool open as a community and school pool facility. The West Spreydon School Pool Committee is not a formal legal entity but has formed under the auspices of West Spreydon School.
6. The West Spreydon School Pool Committee main goals are to:
 - a) Assess the exact state of the pool.
 - b) Assess the level of community support.
 - c) Propose a strategic plan to the board of Trustees of the West Spreydon School.
 - d) Have the pool open to the community for the 2009/10 summer period, should this be a viable option.
7. The West Spreydon School surveyed the parent community and received 33 initial responses. Twenty were in favour of keeping the pool. An additional ten were in favour and willing to be trained in chlorination and two suggested the money could be utilised in other ways.
8. The West Spreydon School pool has been used as a community and school facility for many decades since the 1930s. The ongoing maintenance has been met by the Ministry of Education grant of \$2,300 per year, the school operations contribution of \$3,000-\$4,000 per year and by the selling of pool keys to the community, approx 50 key holders at \$40 totalling \$2,000 per year.
9. The pool is now at a stage where ongoing maintenance is no longer sufficient. The school has been informed that the pool requires reconditioning.
10. There are also other issues such as pool management outside school hours and over the summer holiday period, and vandalism that need to be addressed.

9 Cont'd.

11. While the West Spreydon School Pool Committee has been working on background information and research they have identified that professional assistance is desirable to pull together the feasibility study in a more professional manner. It is proposed that the feasibility study should provide the following outcomes:
 - a) An accurate picture of the current state of West Spreydon School pool.
 - b) An indication of potential design and cost upgrades.
 - c) An analysis of potential future management, programme options, health and safety practices and costings.
 - d) Discussion of practical details including opening hours, management, financial viability and addressing vandalism issues.
 - e) Recommendations regarding the possible future options for the West Spreydon School Pool, including the completion of a strategic plan to be forwarded to the West Spreydon School Board of Trustees for consideration in July 2009.
12. The Christchurch City Council Recreation and Sports Unit has been aware of the West Spreydon School Pool situation over the past year. The Christchurch City Council Recreation and Sport Unit Manager advises that professional advice of facilities on Ministry of Education land is a core function of the Ministry of Education and not the responsibility of Christchurch City Council.
13. In the draft Long Term Council Community Plan 2006-16 it is proposed that a change in the level of service for Aquatic Facilities in the Southern area include adding a children's shallow pool to the existing Pioneer Recreation and Sports Centre. This \$1.5million pool will be designed specifically for swim education to service the needs of the community. The Councillors voted unanimously to support this.
14. Pioneer Recreation and Sports Centre and West Spreydon School Pool are both located on Lyttelton Street. The entrances are 700 metres apart. (**Refer Attachment 1**). The Aquatic Facilities Strategy 2006 outlines support for school pools when they are in targeted areas, to provide a comprehensive network of facilities throughout the city. Due to the West Spreydon School Pool being located in such close vicinity to the Pioneer Recreation and Sports Centre, the West Spreydon School Pool would not be considered within a targeted area.
15. The Spreydon/Heathcote Community Board have been a strong advocate in support for the new learner pool at Pioneer Recreation and Sports Centre.

FINANCIAL IMPLICATIONS

16. The current balance of the Spreydon/Heathcote Community Board Discretionary Fund is \$9,449.
17. This is the first time the applicant has applied for funding. The West Spreydon Pool School Committee is seeking funding support of \$3,000 to enable them to employ professional support to assist completing the feasibility study and strategic plan.
18. To date the West Spreydon Pool School Committee has received professional advice in kind from structural engineers and have been offered staff time in kind from the Christchurch City Council Recreation and Sport Unit. They have received a quote of \$2,500 to assess an accurate state of the condition of the pool. Additional quotes have not yet been received with regards to the overall feasibility study but an estimated cost of achieving goals as referred to in paragraph 6 is \$6,500.

9 Cont'd.

Do the Recommendations of this Report Align with 2006-16 LTCCP budgets?

19. Whilst the 2008/2009 Spreydon/Heathcote Discretionary Fund could be used for this purpose (Democracy and Governance section, pages 113 and 115) it would contravene the Recreation and Leisure section, (pages 132 – 137) of the 2006 – 2016 LTCCP. This is because:
- The project to ascertain the condition of the pool is a core responsibility of the ministry of education.
 - Council have invested in alternative community and school swimming facilities within 700 metres of the site.
 - The West Spreydon School is not is a targeted area under the Aquatic Facilities Plan due to its proximity to the Pioneer Recreation and Sports Centre.

LEGAL CONSIDERATIONS

20. There are no legal issues to be considered.

Have you considered the legal implications of the issue under consideration?

21. Not applicable.

ALIGNMENT WITH LTCCP AND ACTIVITY MANAGEMENT PLANS

22. Whilst the 2008/2009 Spreydon/Heathcote Discretionary Fund could be used for this purpose there is no alignment with Recreation and Leisure levels of service in, pages 132 – 137 of the 2006 – 2016 LTCCP.

Do the recommendations of this report support a level of service or project in the 2006-16 LTCCP?

23. No. As mentioned in section 19 and 22 above.

ALIGNMENT WITH STRATEGIES

24. Application does not align with the Aquatic Facilities Plan 2006.

Do the recommendations align with the Council's strategies?

25. No. See section 14, 19, 22 and 24 of this report.

CONSULTATION FULFILMENT

26. Not applicable.

STAFF RECOMMENDATION

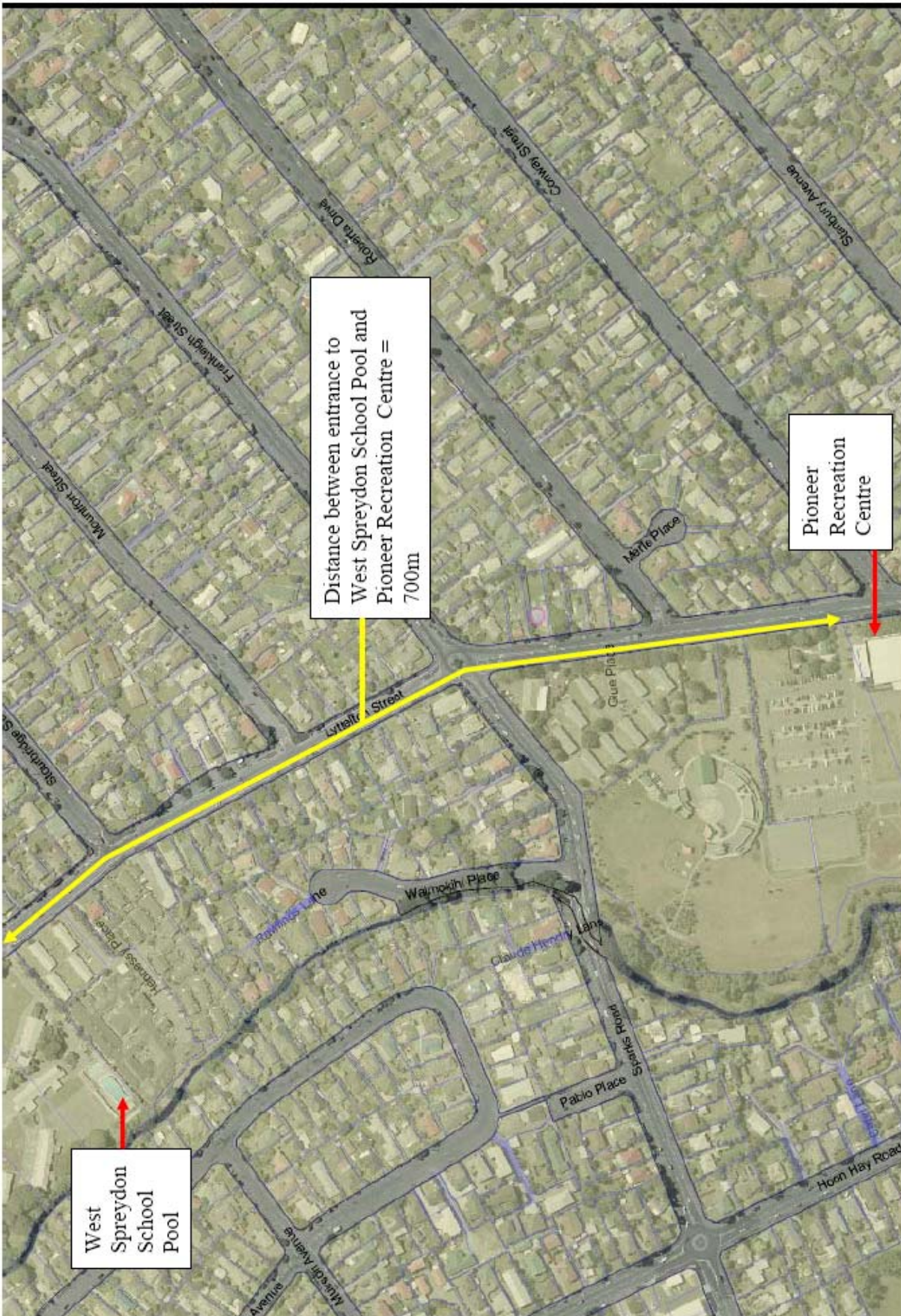
It is recommended that the Spreydon/Heathcote Community Board decline the application from the West Spreydon School Pool Committee to complete a feasibility study to assess the future viability of the West Spreydon School Pool.

Note: It is recommended that the Christchurch City Council Recreation and Sport Unit work with the West Spreydon School and school community to:

- (a) increase accessibility to Pioneer Recreation and Sports Centre and
- (b) encourage the West Spreydon School to focus on programmes and activities that the Christchurch City Council is unable to provide so that they compliment each other rather than compete with each other to meet the needs of the community.

CHAIRPERSONS' RECOMMENDATION

For discussion.



Attachment 1 : Map of pool locations



10. HAZELDEAN ROAD PROPOSED PROHIBITED TIMES ON ROAD

| | |
|-------------------------------------|--|
| General Manager responsible: | General Manager of City Environment, DDI 941-8608 |
| Officer responsible: | Transport and Greenspace Manager |
| Author: | Michael Thomson, Senior Traffic Engineer – Community, DDI 941 8950 |

PURPOSE OF REPORT

1. The purpose of this report is to seek the Board’s recommendation to Council to prohibit motor vehicles weighing less than 3,500 kg from entering and/or being used on Hazeldean Road, between Grove Road and Montreal Street from 10.00pm on Thursdays, Fridays, Saturdays, Sundays, days immediately preceding Statutory Holidays to 5.00am on the following day. (Refer **attached** plan).

EXECUTIVE SUMMARY

2. Business proprietors and owners have informed Council staff and the Police, of damage and littering (broken glass etc) to business properties in Hazeldean Road. The damage which is occurring on a weekly basis, includes:
 - (a) Graffiti to buildings, fences and electrical control boxes.
 - (b) Diesel being poured on the road surface and motorists doing “burn outs”, resulting in road surface damage.
 - (c) Rubbish being deposited on the roadway and adjoining landscaped areas.
 - (d) Glass bottles being broken on roadway.
 - (e) Vehicles being abandoned and set alight.
 - (f) Deliberate fires being lit in grass areas, bordering railway lines.
 - (g) Bottles and other objects being thrown at buildings and breaking windows.
 - (h) General damage to buildings and fittings.
3. Hazeldean Road is in an industrial/commercial environment, that attracts this sort of behaviour at night when businesses along the road are not staffed. The entire northern frontage is railway land. Very few people reside in this section of Hazeldean Road. There is likely to be few independent witnesses to this activity occurring. This factor, combined with the proximity to the central business district and four avenues, contributes to motorists congregating in this area.
4. The Police have also been informed of these issues by Hazeldean Road business proprietors.
5. The Police have powers to deal with offences relating to the lack of traction of vehicles and the speed of vehicles. However, this behaviour will usually have stopped by the time the Police arrive on the scene. It can start up again minutes after they leave. By prohibiting both the spectators and the participants from taking their cars on the road, the problems go away. The most effective way to achieve this is to prohibit those vehicles from using or parking on the road unless they are carrying business/residential owners/occupiers, employees, service or emergency personnel, or bona fide visitors of properties within Hazeldean Road.

FINANCIAL IMPLICATIONS

6. An estimated cost for this work is \$7,000.

Do the Recommendations of this Report Align with 2006-16 LTCCP budgets?

7. The installation of road signs and markings are within the LTCCP Transport and Greenspace operational budgets.

10 Cont'd.

LEGAL CONSIDERATIONS

8. Complies with the provisions of the New Zealand Bill of Rights Act 1989.
9. Clause 15 (1) of the Christchurch City Council Traffic and Parking Bylaw 2008 provides that "The Council may by resolution specify any road or part of a road and the days and times during which motor vehicles weighing less than 3,500 kilograms are prohibited from being used on the road or part of that road or roads".
10. The installation of any restriction signs and/ or markings must comply with the Land Transport Rule: Traffic Control Devices 2004.

Have you considered the legal implications of the issue under consideration?

11. As noted in paragraphs 8, 9 and 10.

ALIGNMENT WITH LTCCP AND ACTIVITY MANAGEMENT PLANS

12. Aligns with the Transport and Greenspace activities by contributing to the Council's Community outcomes Safety and Community.

Do the recommendations of this report support a level of service or project in the 2006-16 LTCCP?

13. This contributes to improve the level of service for safety and access.

ALIGNMENT WITH STRATEGIES

14. The recommendations align with the Council's Safer Christchurch Strategy and Litter Strategy.

Do the recommendations align with the Council's strategies?

15. As noted in paragraph 14.

CONSULTATION FULFILMENT

16. The Police support this recommendation. The request for the prohibition on access and use of the roadway has come from a number of Business Proprietors. Following a meeting, which was initiated to resolve littering and vandalism problems but evolved into this request, all property owners (43), business occupiers (34) and a small group of residents, have been contacted to seek their opinion on the proposed prohibition. All businesses agree and are requesting this prohibition.
17. There is a unanimous support for the prohibition on access from property owners who have responded (27 out of 43). The remainder have not responded to the post paid reply survey.

STAFF RECOMMENDATION

That the Spreydon/Heathcote Community Board recommend to the Council to resolve:

That pursuant to the Christchurch City Council Traffic and Parking By Law 2008, Part 2, Clause 15, motor vehicles weighing less than 3,500 kg are prohibited from being operated on Hazeldean Road between Montreal Street and Grove Road, at the following times:

- (i) from 10.00pm on Thursday to 5.00am the next morning (Friday);
- (ii) from 10.00pm on Fridays to 5.00am the next morning (Saturday);

10 Cont'd.

- (iii) from 10.00pm on Saturdays to 5.00am the next morning (Sunday);
- (iv) from 10.00pm on Sundays to 5.00am the next morning (Monday);
- (v) from 10.00pm on any Statutory Holiday to 5.00am the next morning;
- (vi) from 10.00pm on any day which immediately precedes a Statutory Holiday to 5am the next morning (the Statutory Holiday day).

CHAIRPERSONS' RECOMMENDATION

For discussion.

Photo of Similar Sign

Original Plan Size: A4
 ISSUE.1 28/04/09
 TG100962 MCD

HAZELDEAN ROAD
 Proposed Prohibition Times on Road
For Board Approval

11. KINGSLEY STREET – PROPOSED P5 LOADING ZONES- GOODS VEHICLES ONLY AND P10 PARKING RESTRICTION

| | |
|-------------------------------------|---|
| General Manager responsible: | General Manager City Environment, DDI 941-8608 |
| Officer responsible: | Transport and Greenspace Manager |
| Author: | Lorraine Wilmshurst / Michael Thomson, Network Operations DDI: 941-8950 |

PURPOSE OF REPORT

1. The purpose of this report is to seek the Board’s approval to install two P5 Loading Zones - Goods Vehicles Only on the south side of Kingsley Street and a P10 parking restriction over three angle parks on the north side of Kingsley Street.

EXECUTIVE SUMMARY

2. The Council Networks Operations Team has received requests from several businesses in Kingsley Street, between Hawdon Street and Gasson Street, seeking some adjustments to the parking management in the street. These requests include the installation of Loading Zones - Good Vehicles Only and a P10 parking restriction. Refer to the **attached** plan.
3. Kingsley Street is a local road that extends from Hawdon Street to Waltham Road. It provides access to businesses in the light industrial area that extends from the SIMT Railway south to Brougham Street.
4. In the section of Kingsley Street from Hawdon Street to Gasson Street there are 22 businesses and on-street parking is at a premium. On the north side of the street there are 48 unrestricted angle parks and on the south side there is unrestricted parallel parking and a loading zone.
5. The site at 36-38 Kingsley Street (Enable NZ) has been redeveloped and the existing loading zone currently encroaches across both the driveways into this site. The loading zone needs adjusting in length to keep it clear of the driveways. Enable NZ is happy to retain the loading zone outside the property as they provide on-site parking for staff and visitors, including mobility parks.
6. The business at 30 Kingsley Street has no off-street loading facilities and, as there is often no on-street parking available, delivery vehicles frequently double park in the street. To create more loading facilities in Kingsley Street, it is proposed to remove two parking spaces on the south side of the street and establish a second P5 Loading Zone – Goods Vehicles Only outside this property.
7. The two loading zones will provide facilities for loading and unloading of goods for all businesses in Kingsley Street and remove the hazard of delivery vehicles double parking in the street, creating traffic problems and blocking accesses.
8. The unrestricted on-street parking is usually fully occupied from early morning by clients from the Department of Correction facility and workers from the businesses in the area. There is no short term parking currently available in the street for visitors or couriers. It is proposed to install a P10 parking restriction over three of the existing unrestricted angle parks to cater for the demand for short term turnover type parking.
9. A consultation letter and plan explaining the proposed changes was delivered to all 22 businesses in the street and eight responses were received, of which six supported the proposal.
10. The issues raised in the responses are detailed below in paragraphs 21 – 24.

FINANCIAL IMPLICATIONS

11. The estimated cost of this proposal is approximately \$1,500.

11 Cont'd.

Do the Recommendations of this Report Align with 2006-16 LTCCP budgets?

12. The installation of road markings and signs is within the LTCCP Streets and Transport Operational Budgets.

LEGAL CONSIDERATIONS

13. Part 1, Clause 5 of the Christchurch City Council Traffic and Parking Bylaw 2008 provides Council with the authority to install parking restrictions by resolution.
14. The Community Boards have delegated authority from the Council to exercise the delegations as set out in the Register of Delegations dated April 2008. The list of delegations for the Community Boards includes the resolution of parking restrictions and Traffic Control Devices.
15. The installation of any parking restriction signs and/or markings must comply with the Land Transport Rule: Traffic Control Devices 2004.

Have you considered the legal implications of the issue under consideration?

16. As above.

ALIGNMENT WITH LTCCP AND ACTIVITY MANAGEMENT PLANS

17. Aligns with the Streets and Transport activities by contributing to the Council's Community Outcomes-Safety and Community.

Do the recommendations of this report support a level of service or project in the 2006-16 LTCCP?

18. As above.

ALIGNMENT WITH STRATEGIES

19. The recommendations align with the Council Strategies including the Parking Strategy 2003, Road Safety Strategy 2004 and the Safer Christchurch Strategy 2005.

Do the recommendations align with the Council's Strategies?

20. As above.

CONSULTATION FULFILMENT

21. A consultation letter and plan explaining the proposed changes was delivered to all 22 businesses in the street and eight responses were received. Six of the responses supported the proposal.
22. The issues raised in the consultation responses were a lack of parking in the street and the difficulty some businesses have accessing their premises with large delivery trucks when vehicle are illegally parked to close to their driveways.
23. With angle parking already installed on the north side of Kingsley Street, it is not possible to increase the number of on-street parking spaces, but diagonal white lines will be marked to prevent illegal parking restricting driveway access.
24. Following consultation, a second letter regarding the issues raised by the respondents was sent to all 22 businesses.

11 Cont'd.

- 25. There is no residents association in this industrial area.
- 26. The officer in Charge-Parking Enforcement agrees with this recommendation.

STAFF RECOMMENDATION

It is recommended that the Spreydon/Heathcote Community Board:

Revoke the following parking restriction:

- (a) That the existing P5 Loading Zone at any time on the south side of Kingsley Street commencing at a point 71 metres west from its intersection with Gasson Street and extending in a westerly direction for 27 metres be revoked.

Approve the following parking restrictions on Kingsley Street:

- (b) That a time limited Loading Zone-Goods Vehicles Only (maximum period of five minutes) be installed on the south side of Kingsley Street commencing at a point 77 metres west from its intersection with Gasson Street and extending in a westerly direction for a distance of 15 metres.
- (c) That a time limited Loading Zone-Goods Vehicles Only (maximum period of five minutes) be installed on the south side of Kingsley Street commencing at a point 129.5 metres west from its intersection with Gasson Street and extending in a westerly direction for a distance of 12 metres.
- (d) That the parking of vehicles be restricted to a maximum period of ten minutes on the north side of Kingsley Street commencing at a point 65 metres east from its intersection with Hawdon Street and extending in an easterly direction for a distance of nine metres.

CHAIRPERSONS' RECOMMENDATION

For discussion.

© Copyright Christchurch City Council © Aerial Photography Copyright Terralink International Ltd

CHRISTCHURCH
CITY COUNCIL • YOUR PEOPLE • YOUR CITY

KINGSLEY STREET
Proposed P5 Loading Zones and P10 Parking Restrictions
For Board Approval

Original Plan Size: A4
ISSUE. 1 31/03/09
B90740104 RAH

VeStrada file location - R:\PROJECTS\001 TO 200\001 TO 025\01 AND 46 NETWORK OPERATIONS\KINGSLEY STREET - PARKING\KINGSLEY STREET.DWG

12. COLOMBO STREET PARKING RESTRICTIONS

| | |
|-------------------------------------|---|
| General Manager responsible: | General Manager City Environment, DDI 941 8608 |
| Officer responsible: | Transport and Greenspace Manager |
| Author: | Mike Thomson, Network Operations and Transport Systems DDI 941-8950 |

PURPOSE OF REPORT

1. The purpose of this report is to seek the Board's approval to alter the extent of the time limited parking restriction on the east side of Colombo Street, between Strickland Street and Tennyson Street to allow for the construction of a vehicle access point. Refer **attached** site plan.

EXECUTIVE SUMMARY

2. Board members will be aware of the commercial development on the site described as at the northeast corner of the Colombo Street/Tennyson Street intersection. A recent memo to Board members outlines the legal right for access to and from the site and the consequential effect on the kerbside parking.
3. Removal of two kerbside car parks allows access from the Colombo Street frontage to the commercial development site which will contain 33 car parks.

FINANCIAL IMPLICATIONS

4. The cost of this proposal is estimated to be \$300. Note: the cost of construction of the vehicle access is the responsibility of the property developer.

Do the Recommendations of this Report Align with 2006-16 LTCCP budgets?

5. The installation and removal of road markings and signs is within the LTCCP Street and Transport Operational Budgets.

LEGAL CONSIDERATIONS

6. Clause 5 of the Christchurch Traffic and Parking Bylaw provides the Council the authority to install or remove parking restrictions by resolution.
7. The Community Boards have delegated authority from the Council to exercise the delegations as set out in the Register of Delegations as at April 2008. The list of delegations for the Community Boards includes parking restrictions.
8. The installation of any associated signs and markings must comply with the Land Transport Rule: Traffic Control Devices 2004.

Have you considered the legal implications of the issue under consideration?

9. As above.

ALIGNMENT WITH LTCCP AND ACTIVITY MANAGEMENT PLANS

10. Aligns with the Streets and Transport activities by contributing to the Council's Community outcomes - Community and Safety.

Do the recommendations of this report support a level of service or project in the 2006-16 LTCCP?

11. This contributes to improve the level of service for parking and safety.

12 Cont'd.

ALIGNMENT WITH STRATEGIES

12. The recommendations align with the Council's Parking Strategy 2003.

Do the recommendations align with the Council's strategies?

13. As above.

CONSULTATION FULFILMENT

14. Local businesses have been consulted, but this consultation was in regard to a proposal to remove six car parks on the east side of Colombo Street. The purpose of this original proposal was to address potential disruption to passing arterial traffic as well as provide for the access. There is objection to the removal of any of the east side six car parks, by business proprietors on the west side of Colombo Street.
15. The officer in Charge Parking Enforcement agrees with this recommendation.

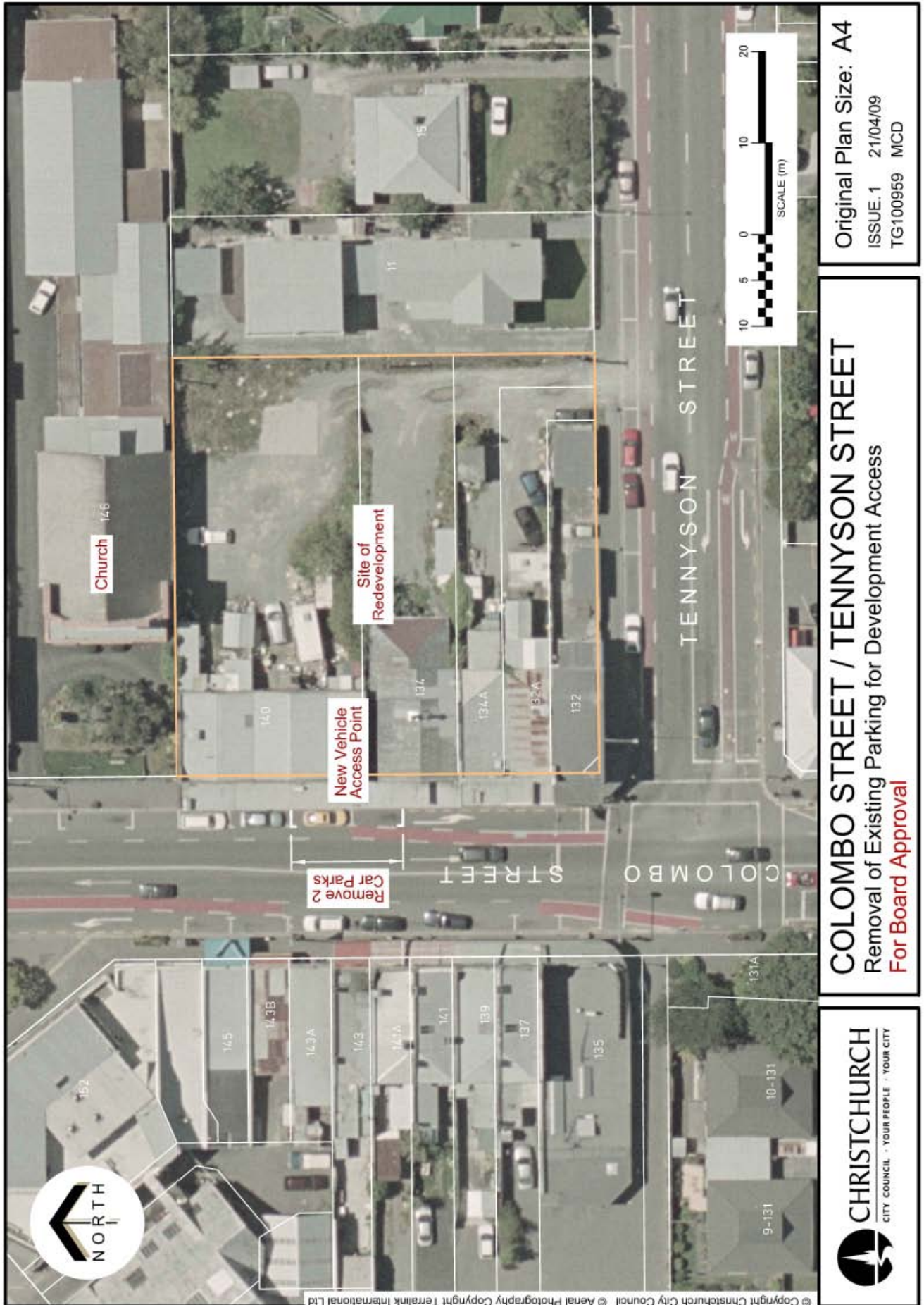
STAFF RECOMMENDATION

That the Spreydon/Heathcote Community Board approve:

- (a) That any parking restriction currently in existence on the east side of Colombo Street, commencing at the intersection with Tennyson Street and extending in a southerly direction to the intersection of Strickland Street be revoked.
- b) That the stopping of vehicles be prohibited at any time on the east side of Colombo Street, commencing at the Tennyson Street intersection and extending in a southerly direction for a distance of 36 metres.
- (c) That the parking of vehicles be restricted to a maximum period of 30 minutes on the east side of Colombo Street commencing at a point 36 metres south of the Tennyson Street intersection and extending in a southerly direction for a distance of 12 metres.
- (d) That the parking of vehicles be restricted to a maximum period of 10 minutes, at any time on the east side of Colombo Street commencing at a point of 53 metres south of the Tennyson Street intersection and extending in a southerly direction for a distance of 20 metres.

CHAIRPERSONS' RECOMMENDATION

That the staff recommendation be supported.



Original Plan Size: A4
 ISSUE.1 21/04/09
 TG100959 MCD

COLOMBO STREET / TENNYSON STREET
 Removal of Existing Parking for Development Access
For Board Approval



**13. MONTGOMERY SPUR RESERVE DRAFT MANAGEMENT PLAN**

| | |
|-------------------------------------|--|
| General Manager responsible: | General Manager, City Environment, DDI 941-8608 |
| Officer responsible: | Recreation Planning Advisor |
| Author: | Grant MacLeod, Recreation Planning Advisor DDI: 941-8688 |

PURPOSE OF REPORT

1. The purpose of this report is to obtain the Boards recommendation to the Council to approve and release the **separately circulated** Draft Management Plan for Montgomery Spur Reserve for public comment in accordance with their delegated authority and process of the Reserves Act 1977.

EXECUTIVE SUMMARY

2. On 31 October 2007, the Council publicly notified, with advertisements in the public notices of The Press and The Star, it's intention to prepare a Management Plan for Montgomery Spur Reserve in accordance with the Reserves Act 1977. An information leaflet was distributed to stakeholders and their ideas and comments invited.
3. The Board was informed of the management plan process and visited the site of Montgomery Spur Reserve in late 2007 to see for themselves what the reserve had to offer and get an idea of the lie of the land.
4. On 14 and 21 October 2007, public information sessions were held at the St Martins Scout Hall to provide an opportunity for the public to share ideas and discuss directions for future management of the reserve, and for staff to outline the process for development of the Management Plan. Comments from these sessions and from various groups and individuals have been incorporated into the Draft Plan.
5. Over 160 people/organisations submitted on the issues gathering stage of the development of the Montgomery Spur Reserve Draft Management Plan. All of those that have left contact details have been acknowledged. The submissions were then analysed and processed to create the Draft Management Plan.
6. The planned consultation process will involve the following methods (note the intended timeline for the process is included):
 - (a) Public notification of the Draft Management Plan in accordance with the Reserves Act 1977, this will include advertising in local newspapers, this being the official opening of the draft submissions period, this period running for no less than two calendar months in accordance with the Reserves Act. Following this an officer's report on the submissions accompany the Draft Plan and be put before the hearings panel. The Hearings Panel is set to meet on the 9 November 2009 to form its recommendations to Council for what should be in the adopted management plan following hearing and viewing of verbal and written submissions.
 - (b) Information sessions will be held at St Martins Scout Hall for the public to meet Council officers face to face to better understand the process and ask general questions on the project. This to occur at the start and toward the end of the two month submission period.
 - (c) The Draft Management Plan will be displayed on the Council's 'Have Your Say' website inviting comment and at the Beckenham Service Centre. This to coincide with the public notification.
7. All previous submitters and interest groups will to be contacted directly with information about the release of the Draft Plan. This to coincide with the public notices and the letterbox drop above.

13 Cont'd.

8. Consultation on the Management Plan must follow the procedures set out in the Reserves Act 1977 which requires that the plan be publicly notified and that interested parties be given at least two months to make submissions. The Act also allows for a hearing if required. All written submissions and hearings will be considered in development of the final plan which will be reported to Council for approval. It is intended that the hearings panel to hear and view all submissions and form recommendations to Council.
9. The main themes or issues raised during the consultation for the Management Plan were as follows:
 - (a) Provision of recreational opportunities for walking and easy grade mountain biking.
 - (b) Weed control and native planting.
 - (c) Links into surrounding public access areas.

FINANCIAL IMPLICATIONS

10. The Draft Plan details funding that will need to be sourced from the upcoming LTCCP or subsequent LTCCP's. With the adoption of the Draft Plan there is no commitment to Council to supply this funding as it is an LTCCP process that decides the funding.

Do the Recommendations of this Report Align with 2006-16 LTCCP budgets?

11. No. The only funding at present is for planning time on the process. Any project listed in the Draft Plan will be sought from future LTCCP's.

LEGAL CONSIDERATIONS

Have you considered the legal implications of the issue under consideration?

12. The Reserves Act 1977 requires that consultation be carried out on land that is classified under the Act. Montgomery Spur Reserve is classified as a Scenic Reserve under the Reserves Act 1977.

ALIGNMENT WITH LTCCP AND ACTIVITY MANAGEMENT PLANS

13. Page 124 and 125 of the LTCCP outlines how Council will like to measure its achievements and plan for what it will do in the future. The Montgomery Spur Reserve Management Plan process will meet the requirements of the achievements listed in that section of the LTCCP.

Do the recommendations of this report support a level of service or project in the 2006-16 LTCCP?

14. Yes, the Draft Management Plan supports the provision of recreation facilities, and proportion of customers satisfied with a range of recreation opportunities available on parks.

ALIGNMENT WITH STRATEGIES

Do the recommendations align with the Council's strategies?

15. The Port Hills Recreation Strategy.
16. The Montgomery Spur Reserve Management Plan will meet the Community Outcomes for a city of healthy active people, a city with a sustainable natural environment, a liveable city and a cultural and fun city.

13 Cont'd.

CONSULTATION FULFILMENT

17. The consultation will fulfil the requirements of the Reserves Act 1977.

STAFF RECOMMENDATION

- (a) It is recommended that the Spreydon/Heathcote Community Board appoint a representative to be considered for the Hearings Panel.
- (b) It is recommended that the Spreydon/Heathcote Community Board recommend to Council that the Council appoint a hearings panel for the week beginning 9 November 2009 to formulate recommendations to Council for the final version of the Management Plan.
- (d) It is recommended that the Spreydon/Heathcote Community Board recommend to the Council that the Council approve the release of the Draft Management Plan for Montgomery Spur Reserve.

CHAIRPERSONS' RECOMMENDATION

For discussion.

14. PROPOSED EASEMENT – LINDON GROVE SUBDIVISION STAGE 1

| | |
|-------------------------------------|--|
| General Manager responsible: | General Manager City Environment, DDI 941 8608 |
| Officer responsible: | Unit Manager, Transport and Greenspace |
| Author: | Tom Lennon, Property Consultant DDI: 941 8191 |

PURPOSE OF REPORT

1. To seek the Community Board's approval for the granting of a number of easements over Lot 177 DP 394814, Lot 179 DP 394814, Lot 180 DP 394814 and Lot 181 DP 394814. The proposed easements will be granted pursuant to the requirements of Section 48 (6) of the Reserves Act 1977.

EXECUTIVE SUMMARY

2. As part of the Lindon Grove subdivision the developer, Ngai Tahu Property Group was required to lay new services across Lot 177 DP 394814, Lot 179 DP 394814, Lot 180 DP 394814 and Lot 181 DP 394814 which were dedicated to Council as reserves.
3. The proposed easements in favour of Orion Ltd (pursuant to section 48 (1) (d) of the Reserves Act), Telecom NZ (pursuant to section 48 (1) (d) of the Reserves Act) and Rockgas (pursuant to section 48 (1) (c) of the Reserves Act) are identified in the **attached plan**.

FINANCIAL IMPLICATIONS

4. The installation cost for the services have been covered by the developer. The costs associated with the legalisation of the proposed easement will be also covered by the developer.

Do the Recommendations of this Report Align with 2006-16 LTCCP budgets?

5. Not applicable.

LEGAL CONSIDERATIONS

6. Lot 177 DP 394814, Lot 179 DP 394814, Lot 180 DP 394814 and Lot 181 DP 394814 are recreation reserves vested in the Council which is held under the provisions of the Reserves Act 1977.
7. The easements requested are for easements in gross because the utilities will service the properties in the adjacent subdivision. The easements will be granted under section 48 (1)(f) of the Reserves Act 1977.
8. No public advertising will be required because:
 - 3(a) The reserve is vested in an administering body and is not likely to be materially altered or permanently damaged; and*
 - (b) The rights of the public in respect of the reserve are not likely to be permanently affected.*

Have you considered the legal implications of the issue under consideration?

9. The legal implications associated with the granting of the easements are minor and are covered in sections 6 to 9 above.

ALIGNMENT WITH LTCCP AND ACTIVITY MANAGEMENT PLANS

10. Not applicable.

14 Cont'd.

Do the recommendations of this report support a level of service or project in the 2006-16 LTCCP?

11. No.

ALIGNMENT WITH STRATEGIES

12. The proposed legalisation of the easements is a minor issue and consequently it is not specifically mentioned in the LTCCP.

Do the recommendations align with the Council's strategies?

13. The proposed legalisation of the easements to protect existing infrastructure is neutral and not in contravention of any Council strategies.

CONSULTATION FULFILMENT

14. Not required, see section 8 above.

STAFF RECOMMENDATION

It is recommended that the Board Spreydon/Heathcote Community acting under a delegation from Council approve, in accordance with the requirements of section 48 of the Reserves Act 1977, the granting of Easements for the rights to convey electricity (pursuant to section 48 (1) (d) of the Reserves Act), telecommunications (pursuant to section 48 (1) (d) of the Reserves Act) and gas (pursuant to section 48 (1) (c) of the Reserves Act) in gross over Lot 177 DP 394814, Lot 179 DP 394814, Lot 180 DP 394814 and Lot 181 DP 394814 recreation reserves held under the Reserves Act 1977, which is vested in the Council in favour of Orion Ltd, Telecom NZ and Rockgas as shown on the attached plan subject to the following condition:

- (a) that the consent of the Department of Conservation for the proposed easement be sought.
- (b) that the registration of the easements be undertaken by the developer at their own cost.

CHAIRPERSONS' RECOMMENDATION

That the staff recommendation be supported.

Schedule / Memorandum



**Eliot Sinclair
& Partners Limited**
Surveyors • Engineers • Planners

Level 5, 151 Kilmore Street
PO Box 4597, Christchurch 8140, New Zealand
Telephone (03) 379-4014 : Fax (03) 365-2449
email esp@eliot Sinclair.co.nz
www.eliot Sinclair.co.nz

Our Ref: 237191

7 February 2008

DP 394814

| Memorandum of Easements (pursuant to s243 Resource Management Act 1991) | | | |
|---|---|---|---|
| Purpose | Shown | Servient Tenement | Dominant Tenement |
| Right of way and rights to convey electricity, telecommunications & computer media and water and gas and to drain water and sewage. | A, CH, CI B, CJ, CK C D E F G, CC, CG V, W | Lot 2 Lot 3 Lot 38 Lot 203 Lot 204 Lot 229 Lot 219 Lot 231 | Lots 1, 3, 4 Lots 1, 2, 4 Lots 39-44, 221-223 Lots 67, 68, 200-202 Lots 56, 205, 206 Lots 227, 228, 230, 231 Lots 218, 220 Lots 229, 230 |
| Right to drain water | AK CD CE BQ, BR BX AE | Lot 212 Lot 62 Lot 63 Lot 18 Lot 30 Lot 41 | Lot 211 Lots 63, 64 Lot 64 Lot 19 Lot 31 Lot 38 |
| Right to drain sewage | AF, AJ AV AG, BA | Lot 3 Lot 7 Lot 8 Lot 8 | Lots 1, 2, 4 Lot 6 Lots 1, 2, 3, 4, 5 Lot 5 |
| Rights to convey electricity and telecommunications and computer media | CG | Lot 219 | Lot 6 |
| Right to convey gas | A, CH, CI, CU B, AJ, CK, CJ | Lot 2 Lot 3 | Lot 4 DP 349157 |
| Right of Way | F V | Lot 229 Lot 230 | Lot 37 Lot 37 |
| Right to drain water in gross | F V, W Y, Z, AA AB AC AD AH AL AM AN AP AQ AR AS, BR AT AW, AX, AY AZ BB CA CB, CC | Lot 229 Lot 231 Lot 37 Lot 227 Lot 226 Lot 225 Lot 14 Lot 212 Lot 213 Lot 214 Lot 215 Lot 216 Lot 217 Lot 18 Lot 22 Lot 224 Lot 223 Lot 19 Lot 218 Lot 219 | Grantee: Christchurch City Council |

237191-329MoE-khm.doc

Directors:
Merton D Sinclair BE BSc FNZIS MIPENZ (Civil & Geotechnical) CP Eng (In) PE RPSurv
Bruce E Sinclair BSc MNZIS RPSurv
Maurice W Penwick Dip Surv MNZIS RPSurv MISA (H1)
Mark A Allan BSurv NZCLS MNZIS RPSurv
John des C Brouard BE MIPENZ Civil Eng

Associates:
Warren J Haynes BSurv MNZIS RPSurv
Ken G Burrows NZCO ANZS
Richard HJ Wilson BE MIPENZ Civil Eng
Alistair D Cocke BSurv NZCLS MNZIS RPSurv

Schedule / Memorandum

Page 2

| | | | |
|--------------------------------------|--|--|--|
| Right to convey electricity in gross | A, CH, CI B, CJ, CK C D E F V, W | Lot 2 Lot 3 Lot 38 Lot 203 Lot 204 Lot 229 Lot 231 | Grantee: Orion New Zealand Limited |
| Right to drain sewage in gross | AH | Lot 14 | Grantee: Christchurch City Council |
| Right to convey water in gross | CH CK | Lot 2 Lot 3 | Grantee: Christchurch City Council |

| Schedule of Easements | | | |
|--------------------------------------|---|--|--|
| Purpose | Shown | Servient Tenement | Dominant Tenement |
| Right to drain water | BC BY BZ | Lot 177 | Lot 32 Lots 30, 31 Lot 29 |
| Right to convey electricity | CS | Lot 181 | Lot 232 |
| Right to drain water in gross | T, BN, CS, CT BS, BV, CL BW | Lot 181 Lot 180 Lot 177 | Grantee: Christchurch City Council |
| Right to drain sewage in gross | T | Lot 181 | Grantee: Christchurch City Council |
| Right to convey electricity in gross | BJ, BL, BH BM, BV, BT, CN, CR BN, CS, CT BP, CV | Lot 179 Lot 180 Lot 181 Lot 177 | Grantee: Orion New Zealand Limited |
| Right to convey water in gross | BL, BJ CL, CM, CN, CP, CQ, CR | Lot 179 Lot 180 | Grantee: Christchurch City Council |
| Right to convey gas in gross | A, CH, CI, CU B, AJ, CJ, CK C D E G, CC, CG F V, W BM, BV, CR BJ, BK, DD AB AC AD AX AZ | Lot 2 Lot 3 Lot 38 Lot 203 Lot 204 Lot 219 Lot 229 Lot 231 Lot 180 Lot 179 Lot 227 Lot 226 Lot 225 Lot 224 Lot 223 | Grantee: Rock Gas Limited |

Schedule / Memorandum

Page 3

| | | | |
|--|--|--|---|
| Right to convey telecommunications and computer media in gross | C D E F V, W AB AC AD AX BM, BV, CR BN, CS, CT | Lot 38 Lot 203 Lot 204 Lot 229 Lot 231 Lot 227 Lot 226 Lot 225 Lot 224 Lot 180 Lot 181 | Grantee: Telecom New Zealand Limited |
| Right to drain sewage | EB | Lot 38 | Lot 3 DP 82003 |
| Right to convey electricity in gross | CV | Lot 177 | Christchurch City Council |

| Schedule of Existing Easements | | | |
|---|------------------------------|--|---------------------|
| Purpose | Shown | Servient Tenement | Document |
| Right to drain water in gross | BD BE BF, W Z BG | Lot 224 Lot 230 Lot 231 Lot 37 Lot 177 | T.A343528.6 |
| Right to drain sewage | EA | Lot 38 | T.A343528.8 |
| Right to convey telephonic communications | DD, BJ, BK | Lot 179 | EC.A449735.3 (Part) |

| Existing Easements To Be Surrendered | | | |
|---|-------|-------------------|---------------------|
| Purpose | Shown | Servient Tenement | Document |
| Right to convey telecommunications & computer media | BI | Lot 186 (Road) | EI. 6499011.7 |
| Right to convey telephonic communications | DE | Lot 186 (Road) | EC.A449735.3 (Part) |

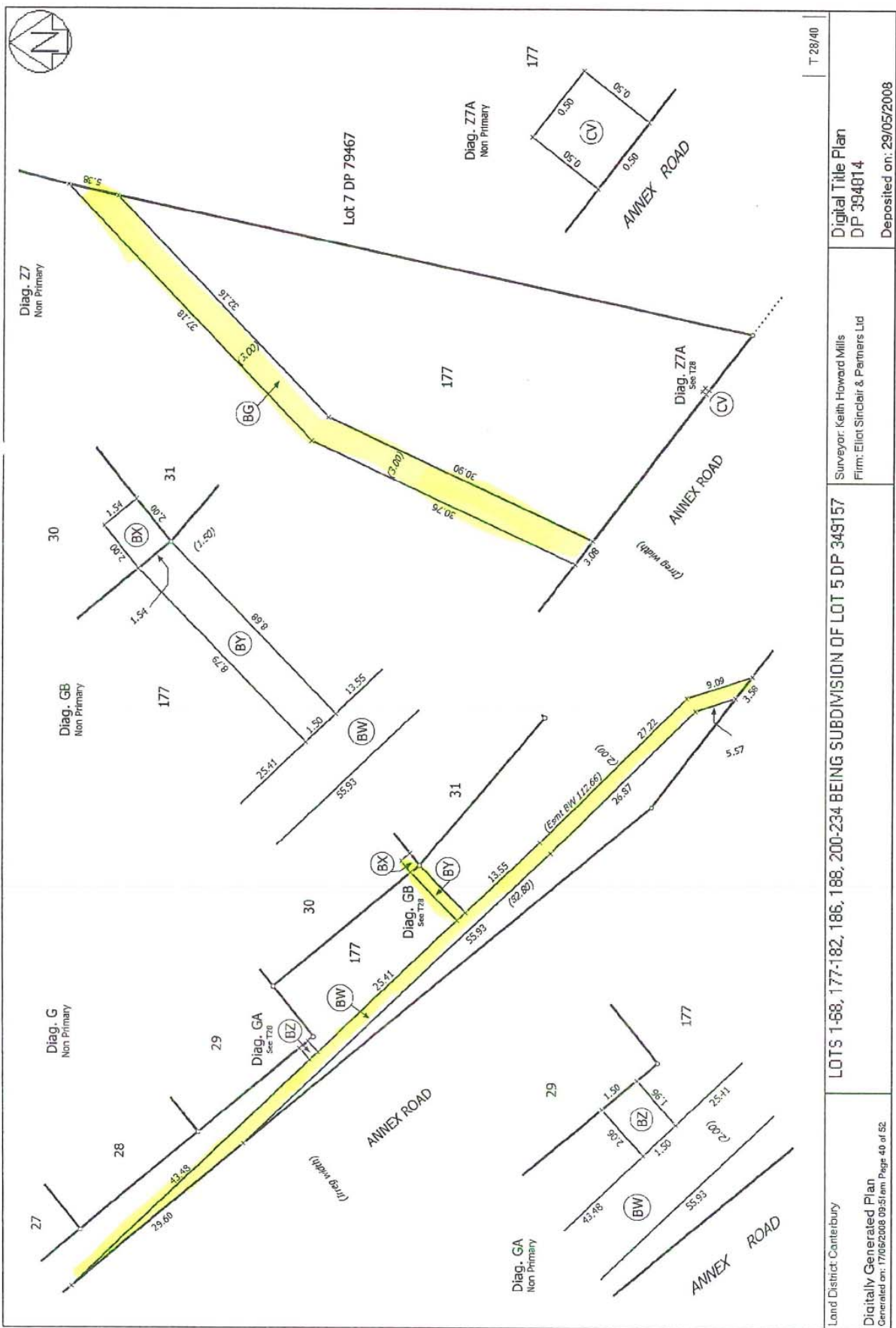
Certifying parties must sign or initial this box.

Notes:

1. Lots 16 – 23 are to be subject to a Section 221 Consent Notice for minimum floor levels and other related criteria.
2. See Title Plan sheets T26 – T40 for the graphical display of these easements.



| | | | |
|--|---|--|--|
| <p>Land District: Canterbury</p> <p>Digitally Generated Plan Generated on: 17/05/2008 09:51:am Page 38 of 52</p> | <p>LOTS 1-68, 177-182, 186, 188, 200-234 BEING SUBDIVISION OF LOT 5 DP 349157</p> | <p>Surveyor: Keith Howard Mills Firm: Elliot Sinclair & Partners Ltd</p> | <p>Digital Title Plan DP 394814 Deposited on: 29/05/2008</p> |
|--|---|--|--|



| | | | | |
|--|---|---|---|---|
| <p>Lot 7 DP 79467</p> <p>Diag. Z7 Non Primary</p> <p>Diag. Z7A Non Primary</p> <p>Diag. Z7A See 128</p> <p>Diag. GB Non Primary</p> <p>Diag. GA See 170</p> <p>Diag. G Non Primary</p> <p>Diag. BX</p> <p>Diag. BY</p> <p>Diag. BW</p> <p>Diag. BZ</p> <p>Diag. GA Non Primary</p> | <p>ANNEX ROAD</p> <p>ANNEX ROAD</p> <p>ANNEX ROAD</p> <p>ANNEX ROAD</p> <p>ANNEX ROAD</p> <p>ANNEX ROAD</p> <p>ANNEX ROAD</p> | <p>Diag. Z7A See 128</p> <p>Diag. GB Non Primary</p> <p>Diag. GA See 170</p> <p>Diag. G Non Primary</p> <p>Diag. BX</p> <p>Diag. BY</p> <p>Diag. BW</p> <p>Diag. BZ</p> <p>Diag. GA Non Primary</p> | <p>ANNEX ROAD</p> <p>ANNEX ROAD</p> <p>ANNEX ROAD</p> <p>ANNEX ROAD</p> <p>ANNEX ROAD</p> <p>ANNEX ROAD</p> <p>ANNEX ROAD</p> | <p>ANNEX ROAD</p> <p>ANNEX ROAD</p> <p>ANNEX ROAD</p> <p>ANNEX ROAD</p> <p>ANNEX ROAD</p> <p>ANNEX ROAD</p> <p>ANNEX ROAD</p> |
|--|---|---|---|---|

Lord District: Canterbury

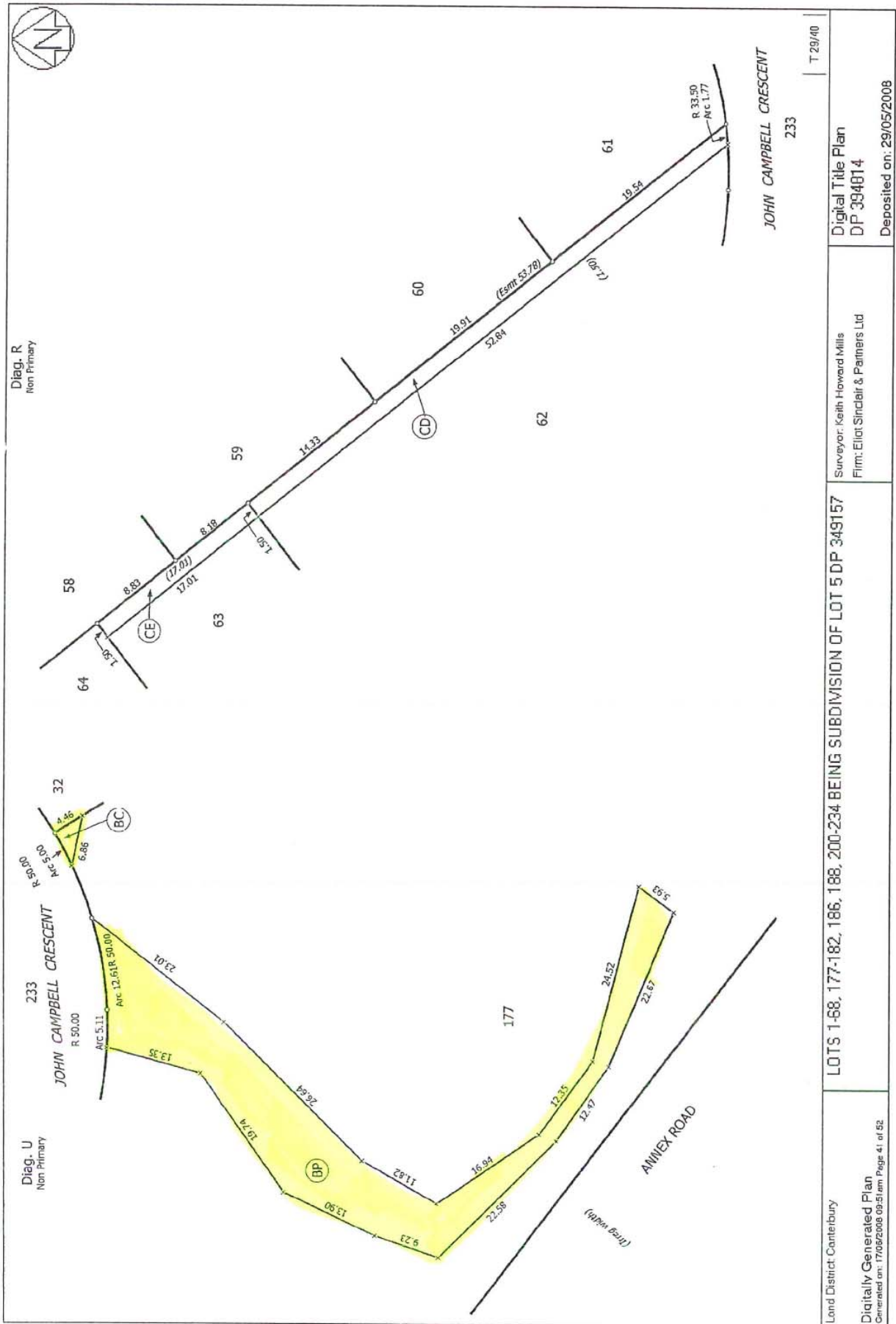
Digitally Generated Plan
Generated on: 17/05/2008 09:51 am Page 40 of 52

LOTS 1-68, 177-182, 186, 188, 200-234 BEING SUBDIVISION OF LOT 5 DP 349157

Surveyor: Keith Howard Mills
Firm: Eliot Sinclair & Partners Ltd

Digital Title Plan
DP 334814

Deposited on: 29/05/2008



Lond District: Canterbury
 Digitally Generated Plan
 Generated on: 17/05/2008 09:51 am Page 41 of 52

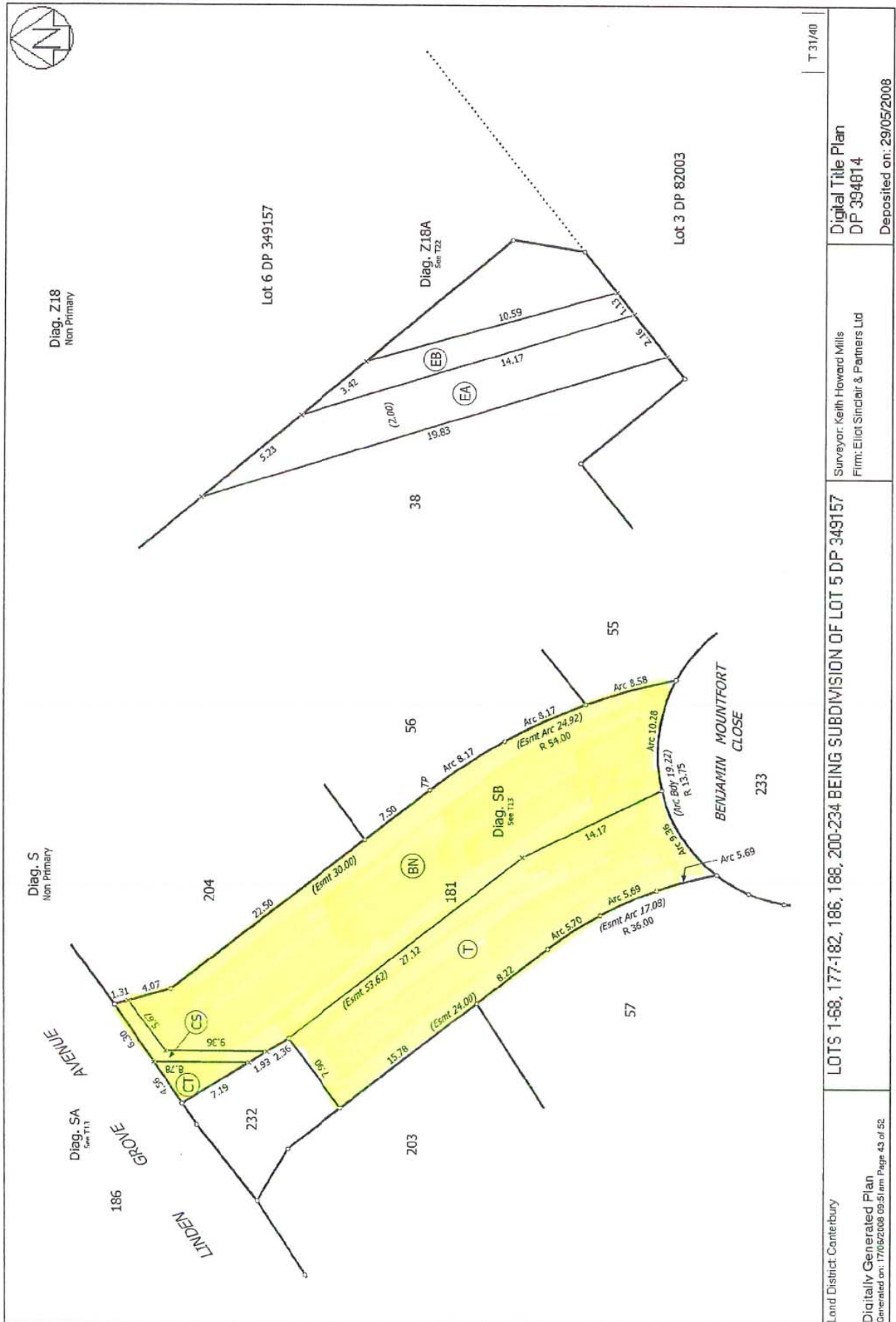
LOTS 1-68, 177-182, 186, 188, 200-234 BEING SUBDIVISION OF LOT 5 DP 349157

Surveyor: Keith Howard Mills
 Firm: Elliot Sinclair & Partners Ltd

Digital Title Plan
 DP 394014
 Deposited on: 29/05/2008

T 29/40

JOHN CAMPBELL CRESCENT
 233



T 31/40

Digital Title Plan
DP 394814
Deposited on: 29/05/2008

Surveyor: Keith Howard Mills
Firm: Eliot Sinclair & Partners Ltd

LOTS 1-68, 177-182, 186, 188, 200-234 BEING SUBDIVISION OF LOT 5 DP 349157

Land District: Canterbury
Digitally Generated Plan
Generated on: 17/05/2008 09:51 am Page: 43 of 62

15. VICTORIA PARK / ELIZABETH PARK / SUGARLOAF SCENIC RESERVE – ORION CABLE EASEMENT

| | |
|-------------------------------------|---|
| General Manager responsible: | General Manager, Corporate Support Group DDI 941-8528 |
| Officer responsible: | Unit Manger, Corporate Support |
| Author: | Lewis Burn, Property Consultant DDI 941 8522 |

PURPOSE OF REPORT

1. The purpose of this report is to seek the approval of the Board under the delegated authority of Council to the granting of an easement in gross to Orion NZ for an underground 11,000 volt cable to be laid within Victoria Park to replace overhead lines currently within Bowenvale Reserve. Approval is also being sought to grant an easement to Orion for an existing underground cable laid in Victoria Park, Elizabeth Park and Sugarloaf Scenic Reserve.

EXECUTIVE SUMMARY

2. Orion currently have an underground 11,000 volt cable laid from Sugarloaf Scenic Reserve to a pole within Victoria Park. From this point there is an overhead line that follows the eastern boundary of Victoria Park then branches off to Bowenvale and Huntsbury Avenues.
3. Orion NZ proposes to remove the overhead line within Victoria Park and Bowenvale Reserve and to replace this supply line by laying an underground cable from the Summit Road that will for the most part follow dirt tracks that are partly in legal road and sealed access in Victoria Park to the existing power kiosk at the Park carpark. Where the line is or is to be laid within legal road no easement is necessary in terms of the provisions of the Electricity Act 1992.
4. While looking into this proposal with Orion and their contractor, it was agreed that it would be prudent to tidy up the whole supply line from where it leaves Longhurst Terrace through to the Transmission facility by also creating easements for the cable where it is presently laid within Victoria Park, Elizabeth Park and Sugarloaf Scenic Reserve.
5. An on site visit with Port Hill Rangers and Orion has established the most practical route for the cable having regard to terrain, vegetation, tracks and existing legal but unformed road.
6. Orion have consulted both the Summit Road Society and the Summit Road Protection Authority and both organisations see this proposal as a positive move.
7. Consent will be required from the Department of Conservation to the grant of the easements in respect of the new work. The easement to identify and protect existing underground cable within Victoria Park, Elizabeth Park and Sugarloaf Scenic Reserve can be authorised by Council (Board) under a delegation to Territorial Authorities from the Minister of Conservation.

FINANCIAL IMPLICATIONS

8. There are no financial implications apart from administration costs for Council. Orion NZ will meet all costs of installation and establishing the easements proposed. This report is proposing that in this situation, no compensation for the easement rights will be sought from Orion NZ given that the objective of the application is to replace the present overhead power lines in Bowenvale Reserve and to formalise the existing underground cable in Elizabeth Park and Sugarloaf Scenic Reserve.

Do the Recommendations of this Report Align with 2006-16 LTCCP budgets?

9. Not applicable.

15 Cont'd.

LEGAL CONSIDERATIONS

10. Victoria Park and Elizabeth Park are recreation reserves vested in the Council. Sugarloaf Scenic Reserve is a Crown conservation reserve with the Council appointed as the Manager. The Council as administering body may with the consent of the Minister of Conservation, grant easements for electrical installation work under Section 48 (1) (d) of the Reserves Act 1977. Where the reserve is not likely to be materially altered or permanently damaged and the rights of the public in respect of the reserve are not likely to be permanently affected by the establishment and lawful exercise of the easement, public notification is not required. This application falls into this category and approval on this basis is being recommended subject to appropriate conditions. Legal services will be involved in the final documentation of the easement.
11. The Community Board has the powers of Council to grant rights of way and other easements over reserves (Section 48 Reserves Act). The power to grant easements where the activity is an existing use and the effects of the use will be the same or similar in character, intensity and scale (existing laid cable in Elizabeth Park and Sugarloaf Scenic Reserve) is delegated from the Minister of Conservation to Council as the administering body and manager and the Board may exercise this power.

Have you considered the legal implications of the issue under consideration?

12. As above.

ALIGNMENT WITH LTCCP AND ACTIVITY MANAGEMENT PLANS

13. Not applicable.

Do the recommendations of this report support a level of service or project in the 2006-16 LTCCP?

14. Not applicable.

ALIGNMENT WITH STRATEGIES

15. Not applicable.

Do the recommendations align with the Council's strategies?

16. Not applicable.

CONSULTATION FULFILMENT

17. As indicated under paragraph 10, public notification under the Reserves Act may be waived in this case. There is no other statutory notification requirement. Appropriate public notice and signage will be managed by the Port Hills Ranger staff at the time of installation of the cable to cordon off the construction site for the safety of walkers and mountain bikers.

STAFF RECOMMENDATION

It is recommended that the Spreydon/Heathcote Community Board acting under a delegation from the Council:

- (a) Subject to the conditions under b, c, and d below, grant an easement in gross for the conveyance of electricity in favour of Orion New Zealand over those parcels of land shown marked A-J on the attached scheme plan
- (b) Subject to the conditions c and d below, exercise the delegation from the Minister of Conservation in consenting to the easement in respect to parcels A, G (kiosk) H, I and J.

15 Cont'd.

- (c) Where required, the consent of the Minister of Conservation being obtained prior to any site work.
- (d) All costs associated with installation of the cable and easement creation (together with overhead line removal within Victoria Park and Bowenvale Reserve) being the responsibility of Orion NZ.
- (e) The Corporate Support Unit Manager in consultation with the Transport and Greenspace Manager or their designates be authorised to set and conclude the conditions of the easement agreement with Orion in respect to site works, public access, safety, restoration and bond requirements.

CHAIRPERSONS' RECOMMENDATION

That the staff recommendation be supported.

BACKGROUND (THE ISSUES)

- 18. Of importance to regional parks is that the installation of the cable has no negative effect on the visual amenity of the land, recreational access and enjoyment and pose any short or long term risk to staff and the public. The laying of an underground cable which for the majority of the intended route, will follow existing formed tracks is not considered to be at issue with these values and will result in an improved visual amenity to Victoria Park and Bowenvale Reserve.
- 19. In determining the preferred route the existing dirt tracks are to be followed as far as practical so as to avoid any tree or tree route disturbance. The cable is to be laid within a two metre easement corridor with a minimum cover of 600 metres. The final route will be determined by a survey fix following laying of the cable.
- 20. Site work will be coordinated between Council rangers and Orion contractor to determine appropriate installation timing to minimise public inconvenience but having regard to ground conditions.
- 21. The cable will be able to be utilised in future for any Council use if needed.

THE OBJECTIVES

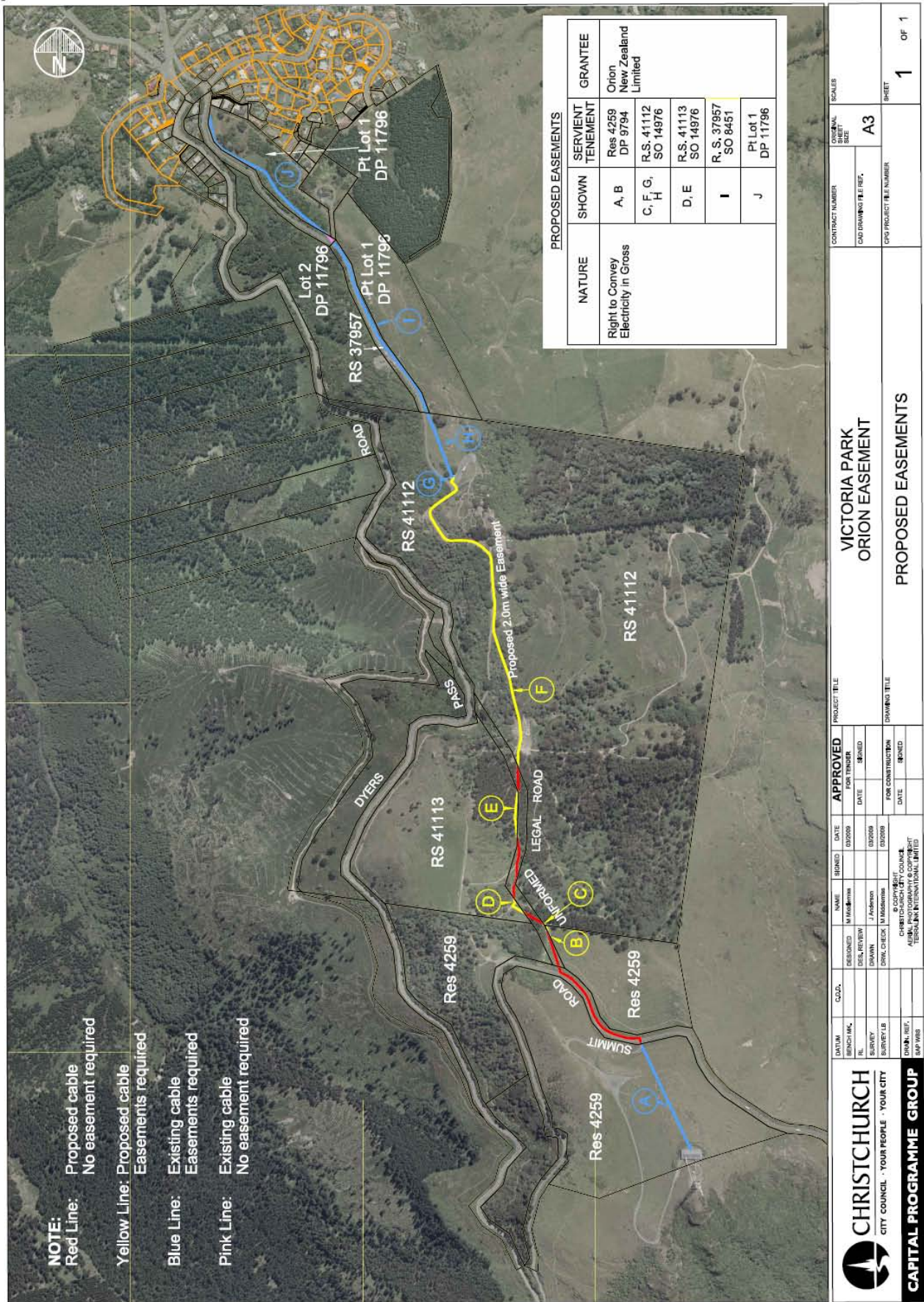
- 22. To put in place a registered easement to identify and protect an Orion underground electrical cable through Victoria Park which will replace an existing overhead line in Victoria Park and Bowenvale Reserve.
- 23. To formalise by easement while attending to objective 22, the existing underground Orion cable within Elizabeth Park and Sugarloaf Scenic Reserve.

THE OPTIONS

- 24. There are two options:
 - (a) To approve the application for an easement and proceed with the cable installation as proposed.
 - (b) To decline the application and leave the existing overhead line in Bowenvale Reserve in place.

THE PREFERRED OPTION

- 25. The preferred option is option 1. Although the project is not essential to benefit the Parks, the work will have no long term detriment to the Park. The consequential removal of the overhead lines in Bowenvale Reserve and partly in Victoria Park would be a positive result.



NOTE:
 Red Line: Proposed cable
 No easement required

Yellow Line: Proposed cable
 Easements required

Blue Line: Existing cable
 Easements required

Pink Line: Existing cable
 No easement required

| PROPOSED EASEMENTS | | | |
|--------------------------------------|------------|------------------------|---------------------------------|
| NATURE | SHOWN | SERVIENT TENEMENT | GRANTEE |
| Right to Convey Electricity in Gross | A, B | Res 4259 DP 9794 | Orion New Zealand Limited |
| | C, F, G, H | R.S. 41112 SO 14976 | |
| | D, E | R.S. 41113 SO 14976 | |
| | I | R.S. 37957 SO 8451 | |
| | J | Pt Lot 1 DP 11796 | |
| | | | |

| | | | | | | |
|---|--|---|--|--|--------------------------------------|----------------------|
| CHRISTCHURCH CITY COUNCIL - YOUR PEOPLE - YOUR CITY CAPITAL PROGRAMME GROUP | | VICTORIA PARK ORION EASEMENT | | CONTRACT NUMBER OLD DRAWING FILE NO. CPO PROJECT FILE NUMBER | ORIGINAL SHEET A3 SHEET | 1 OF 1 |
| APPROVED FOR TENDER DATE: _____ | | PROJECT TITLE PROPOSED EASEMENTS | | DRAWING TITLE PROPOSED EASEMENTS | | |
| APPROVED FOR CONSTRUCTION DATE: _____ | | | | | | |

16. SPREYDON/HEATHCOTE COMMUNITY BOARD KEY LOCAL PROJECTS FOR 2009/10

| | |
|-------------------------------------|---|
| General Manager responsible: | General Manager Community Services, DDI 941 8607 |
| Officer responsible: | Unit Manager Community Support |
| Author: | Matthew Pratt; Team Leader Community Grants Funding, DDI 941-8933 |

PURPOSE OF REPORT

1. The purpose of this report is to provide the Board with the opportunity to consider the funding applications it wishes to nominate as Key Local Projects (KLP's) for 2009/10.

EXECUTIVE SUMMARY

2. As part of the Strengthening Communities Grants Funding Programme, each Board may nominate Key Local Projects (KLP's) in its ward that are put forward to the Metropolitan Funding Committee for consideration for metropolitan funding.
3. The Metropolitan Funding Committee will make KLP decisions based on affordability and the following priorities:
 - Strengthening Communities Strategy Principles and Goals;
 - Funding outcomes and priorities as set out in Strengthening Communities Strategy;
 - Alignment to local Community Board objectives;

AND

 - Projects deliver benefits to the city outside of the local Board area;
 - Key community issues contemplated under Goal 2 of the Strengthening Communities Strategy.
4. In addition, staff recommendations for Key Local Projects are also based on whether the project meets the following criteria:
 - The organisation undertaking the project has a proven track record with Council in providing a high quality level of service;
 - Significantly contributes towards the Council's Funding Outcomes and Priorities;
 - Demonstrates leadership and innovation;
 - Demonstrates best-practice and collaboration.
5. At the Spreydon/Heathcote Community Board workshop held on 1 May 2009, staff recommended that no further projects be nominated by the Board as Key Local Projects for the 2009/10 funding round.
6. The following Spreydon/Heathcote projects were approved as Key Local Projects in the 2008/09 funding and are currently funded for a three year period:
 - Cross Over Trust \$47,000
 - Rowley Resource Centre \$30,000
 - Spreydon Youth Community Trust \$27,000

Timeline and Process

7. The KLPs as approved by the Board will be put forward to the Metropolitan Strengthening Communities Funding Committee for consideration at its meeting on 20 July 2009.
8. Any recommended KLPs will be considered for a two year funding period to ensure that all KLPs are kept in line with the three year KLP funding cycle which commenced in July 2008.

16 Cont'd.

FINANCIAL IMPLICATIONS

9. In 2008/09 each Christchurch City Community Board had \$280,000 to allocate in its Strengthening Communities Fund. Akaroa/Wairewa and Lyttleton/Mt Herbert had \$35,000 and \$45,000 respectively available for their allocation.
10. The finalised 2009/2010 grants funding allocation amounts are currently awaiting sign off through the LTCCP processes.
11. If recommended KLPs do not receive funding at a Metropolitan level, they will be returned to the Board for consideration with their remaining Strengthening Communities applications.

Do the Recommendations of this Report Align with 2006-16 LTCCP budgets?

12. Yes.

LEGAL CONSIDERATIONS

Have you considered the legal implications of the issue under consideration?

13. Yes. Community Board funding decisions are made under delegated authority from the Council.

ALIGNMENT WITH LTCCP AND ACTIVITY MANAGEMENT PLANS

Do the recommendations of this report support a level of service or project in the 2006-16 LTCCP?

14. Yes. Strengthening Communities Funding and Community Board Funding.

ALIGNMENT WITH STRATEGIES

Do the recommendations align with the Council's strategies?

15. Strengthening Communities Strategy.

CONSULTATION FULFILMENT

16. No external consultation needs to be undertaken, although staff have discussed funding applications with those groups that have submitted the applications.

STAFF RECOMMENDATION

It is recommended that the Spreydon/Heathcote Community Board do not nominate any projects to be considered as Key Local Projects for the 2009/10 Strengthening Communities Fund.

CHAIRPERSONS' RECOMMENDATION

For discussion.

16 Cont'd.

BACKGROUND (THE ISSUES)

17. The Council adopted the Strengthening Communities Strategy on 12 July 2007. The Strategy incorporated the Community Group Grants Review which provided the framework, principles and funding outcomes for the new Strengthening Communities Grants Funding Programme. This programme replaces the Project and Discretionary Funding process as previously used by the Community Boards.
18. Council staff reviewed the funding programme following the 2008/09 funding year and consulted all interested parties on the successes and failures of the process. As a result of this review, some changes were implemented. The full report detailing these changes can be viewed as part of the Council agenda for its meeting on 27 November 2008.
19. The Strengthening Communities Grants Funding Programme comprises four funding schemes, which supersede all previous community group grant schemes, sub-schemes and categories. The schemes are:
 - (a) Strengthening Communities Fund
 - (b) Small Grants Fund
 - (c) Discretionary Response Fund
 - (d) Community Organisations Loan Scheme
20. The funding schemes enable Council and its community boards to support and provide leverage opportunities for not-for-profit, community focused groups seeking funding in support of their community endeavours.
21. Each Board may nominate Key Local Projects (KLPs) in its area that are put forward to the Metropolitan Funding Committee for consideration for metropolitan funding.
22. The agreed process to determine if a "local" funding application should be processed as a KLP was detailed in the report adopted by Council on 4 October, 2007.
23. The Metropolitan Funding Committee will make KLP decisions based on affordability and the following priorities:
 - Strengthening Communities Strategy Principles and Goals;
 - Funding outcomes and priorities as set out in Strengthening Communities Strategy;
 - Alignment to local Community Board objectives;AND
 - Projects deliver benefits to the city outside of the local Board area;
 - Key community issues contemplated under Goal 2 of the Strengthening Communities Strategy.
24. The process for considering KLPs is as follows:
 - i. Community Boards nominate and prioritise their KLPs and make a recommendation to the Metropolitan Funding Committee.
 - ii. The Metropolitan Funding Committee makes decisions on Board recommended KLPs.
 - iii. Successful KLPs are allocated funding from the Metropolitan Strengthening Communities Fund.
 - iv. Unsuccessful KLPs are returned to the Community Board for consideration under the local Strengthening Communities Fund.
25. Community Boards are advised that where candidates for KLP funding consideration are successful in receiving funding from the Metropolitan Funding Committee, then there can be no further call on the Board for that project.

16 Cont'd.

26. This is also the case, where a successful candidate is funded to a lower level than has been recommended by the board. This reflects the "funding constraints" criteria agreed by Council in Appendix F of the October 4, 2007 report which states that "groups receiving funding at a Metropolitan level may only receive local level funding if the project is specifically local and no portion of it has been funded at the Metropolitan level".
27. The following table lists all of the organisations that were funded as KLPs in the 2008/09 funding year.

| Name of Group | Amount Funded | Community Board |
|---|----------------------|------------------------|
| Aranui Community Trust | \$31,000 | Burwood Pegasus |
| Cross Over Trust | \$47,000 | Spreydon Heathcote |
| Rowley Resource Centre | \$30,000 | Spreydon Heathcote |
| Spreydon Youth Community Trust | \$27,000 | Spreydon Heathcote |
| Shirley Community Trust | \$22,880 | Shirley Papanui |
| St Albans Residents' Association | \$40,000 | Shirley Papanui |
| Papanui Youth Development Trust | \$27,000 | Shirley Papanui |
| Shoreline Youth Trust | \$16,000 | Hagley Ferrymead |
| Te Whare Roimata Trust - (Older Persons) | \$27,000 | Hagley Ferrymead |
| Te Whare Roimata Trust - (Bromley Community Development) | \$27,000 | Hagley Ferrymead |
| Te Whare Roimata Trust - (Community Gardens) | \$27,000 | Hagley Ferrymead |
| Te Whare Roimata Trust - (Linwood Community Arts) | \$52,000 | Hagley Ferrymead |
| Te Puawaitanga ki Otautahi Trust (Community Development Worker) | \$51,800 | Riccarton Wigram |
| Te Puawaitanga ki Otautahi Trust (Community Facilities Coordinator) | \$51,250 | Riccarton Wigram |

17. APPROVAL OF THE SPREYDON/HEATHCOTE COMMUNITY BOARD SUBMISSION TO THE DRAFT ENVIRONMENT CANTERBURY LONG TERM COUNCIL COMMUNITY PLAN 2009-19

PURPOSE OF REPORT

The Board held an informal meeting on 21 April 2009 to consider its submission to Environment Canterbury on the Draft Long Term Council Community Plan (LTCCP) 2009 – 2019.

The **attached** submission was submitted and ratification of that action is requested.

STAFF RECOMMENDATION

That the Board approve the Spreydon/Heathcote Community Board Submission on the Draft Environment Canterbury Draft Long Term Council Community Plan (LTCCP) 2009 - 2019 and the action of the Board in forwarding it to Environment Canterbury be confirmed.

CHAIRPERSONS' RECOMMENDATION

That the staff recommendation be supported.

Submission from the Spreydon/Heathcote Community Board on the Draft Environment Canterbury Long Term Council Community Plan 2009-19

The Board makes the following submission:

The Board would like to thank Environment Canterbury for the opportunity to make this submission.

The Board wishes to be heard in support of its submission.

1. The Heathcote River

The Community Board would like to point out that the major project in the Spreydon/Heathcote Ward is the Mid-Heathcote Opāwaho Linear Park Master Plan. The plan provides guidance for the long term management of the mid section of the Heathcote River Opāwaho. The Masterplan focuses on the section of the Heathcote River that lies between Colombo Street and Opawa Road, situated within public open space.

The Heathcote River has many heritage, cultural ecological and recreational attributes which contribute to community and neighbourhood appreciation of this natural asset within the city. The main policies of this plan were developed from local community aspiration in the river corridor. The Board believes that it would be an opportune time to work closely with Ecan on matters related to the Upper Heathcote River. In particular the matters of storm water run off, flooding and pollution in the river are of great concern to the Board. The Board looks forward to a stronger relationship with Ecan regarding this matter.

2. South West Area Plan (SWAP)

The Board is interested in continuing to work closely with Ecan regarding SWAP especially given the increased population growth and the management of drainage in the South West Area. The two Councils should continue to work closely together particularly in relation to matters such as integrated catchment management plans. Further the Board considers that joint work should be undertaken in relation to the residents whose properties back onto the southern motorway as the development of the motorway progresses.

3. Public Passenger Transport

The Board wishes to emphasize that the bus routes are a major point of interest for the Board. Any change to bus routes are always of major interest to the Board given the level of resident interest in increasing access to bus services. The Bus 66 route along Centaurus Road at the intersection with Anysley/Rapaki/Vernon is of particular interest to the Board at present, given deputations to the Board and the ECan consultations regarding this route. The Board wishes to continue to work with ECan on this matter.


4. River Guardians

The Board considers that it would be worthwhile if the river guardian project was given renewed emphasis with a more formal implementation plan and appropriate recognition. This is another matter on which the Board considers that Ecan and the Council can work together in the best interest of Christchurch's river systems. There are a number of residents closely involved with the waterways in the ward in particular the Cracroft Residents group and Manning Intermediate. Joint Council consideration should be given to promoting the development of a river guardian project.

5. Water Management and Water Consents

The Board considers that the matter of people with water consents being able to sell off their excess usage to be of great concern. The Board considers that this matter should be carefully monitored and consideration should be given to not allowing water trading.

Signed



Phil Clearwater
Chairperson
Spreydon/Heathcote Community Board

29 April 2009

Beckenham Service Centre, 66 Colombo Street, Christchurch, 8242
PO Box 12 033, Christchurch, 8242
Phone: 03 941 5108
Email: jenny.hughey@ccc.govt.nz

18. COMMUNITY BOARD ADVISERS' UPDATE

18.1 Tree Policy Working Party

19. ELECTED MEMBERS' INFORMATION EXCHANGE

20. MEMBERS QUESTIONS UNDER STANDING ORDERS

21. RESOLUTION TO EXCLUDE THE PUBLIC

(Refer attachment)

