

RICCARTON/WIGRAM COMMUNITY BOARD

**ENVIRONMENT COMMITTEE
AGENDA**

MONDAY 20 JULY 2009

AT 8.00AM

**IN THE BOARDROOM,
SOCKBURN SERVICE CENTRE
149 MAIN SOUTH ROAD, CHRISTCHURCH**

Committee: Beth Dunn (Chairperson), Helen Broughton, Jimmy Chen, Judy Kirk, Peter Laloli, Mike Mora and Bob Shearing.

Community Board Adviser

Liz Beaven

Telephone: 941-6501

Email: liz.beaven@ccc.govt.nz

PART A - MATTERS REQUIRING A COUNCIL DECISION

PART B - REPORTS FOR INFORMATION

PART C - DELEGATED DECISIONS

INDEX

	PAGE NO	CLAUSE	
PART B	2	1.	APOLOGIES
PART B	2	2.	DEPUTATIONS BY APPOINTMENT
PART B	2	3.	CORRESPONDENCE
PART B	2	4.	BRIEFINGS
		4.1	Awatea Retention Basin Stage One Project
		4.2	Siska Place, Tree Removal Request
PART C	3	5.	TREE REMOVAL: 11 STAVELEY STREET
PART B	13	6.	ELECTED MEMBERS' INFORMATION EXCHANGE

We're on the Web!

www.ccc.govt.nz/Council/Agendas/

1. **APOLOGIES**

2. **DEPUTATIONS BY APPOINTMENT**

3. **CORRESPONDENCE**

4. **BRIEFINGS**

4.1 **Awatea Retention Basin Stage One** - Tara Smith, Consultation Leader – Greenspace, and Mark Penrice, Project Manager, will update the Board on the Awatea Retention Basin Stage One Project.

4.2 **Siska Place** – Memorandum received from staff in reply to the issues M Haughey of 9A Siska Place raised in his letter to the Riccarton/Wigram Community Board in May 2009.

5. TREE REMOVAL: 11 STAVELEY STREET

General Manager responsible:	General Manager City Environment, DDI 941 8608
Officer responsible:	Transport and Greenspace Manager
Author:	Jonathan Hansen, Arborist DDI 941 8328, Tara Smith, Consultation Leader

PURPOSE OF REPORT

1. The purpose of this report is to seek the Riccarton/Wigram Environment Committee's recommendation to the Riccarton/Wigram Community Board on the potential removal of a Silver Birch tree located outside number 11 Staveley Street (the tree is on the berm in Archdall Place) in Avonhead (**refer Attachments 1 and 2**).

EXECUTIVE SUMMARY

2. Council has received ongoing requests from the resident of 1 Archdall Place to remove the tree. The issues revolve around the dropping of seeds, leaves and twigs and concern over the risk of the tree falling over.
3. The tree has excellent form for its species and makes a significant contribution to the landscape of Archdall Place.
4. This particular tree was planted in 1970 by the Waimairi District Council. Of the original ten planted only three remain.
5. An arboricultural assessment has been carried out and there are currently no health and safety concerns associated with this tree which would warrant the Council to initiate its removal. For this reason staff recommend that the tree is retained.

FINANCIAL IMPLICATIONS

6. The cost to remove and replace the tree with a PB95 grade tree is estimated at \$1,966.
7. The STEM evaluation points total is 84.
8. The valuation for the tree using STEM is \$8,800.
9. STEM (A Standard Tree Evaluation Method) is the New Zealand national arboricultural industry standard for evaluation and valuing amenity trees by assessing their condition and contribution to amenity along with other distinguishable attributes such as stature, historic or scientific significance.

Do the Recommendations of this Report Align with 2006-16 LTCCP budgets?

10. Yes the recommendation aligns with the current LTCCP budgets.

LEGAL CONSIDERATIONS

11. The Transport and Greenspace Manager has the following delegation with respect to trees:

“In consultation with any other units affected and the relevant Community Board, authorise the planting or removal of trees from any reserve or other property under the Manager’s control”.
12. While the Transport and Greenspace Manager has the delegation to remove the Silver Birch tree current practice is that in most cases requests to remove healthy and structurally sound trees are placed before the appropriate Community Board for a decision.
13. Under the delegations to Community Boards, the Board has the authority to “plant, maintain and remove trees on reserves, parks and roads” under the control of the Council within the policy set by the Council.

5 Cont'd

14. Protected street trees can only be removed by a successful application under the Resource Management Act. This tree is not listed as protected under the provision of the Christchurch City Plan.
15. The following City Plan Policies may be of some benefit when considering the options -

4.2.1 Policy: Tree Cover

To promote amenity values in the urban area by maintaining and enhancing the tree cover present in the City.

Tree cover and vegetation make an important contribution to amenity values in the City. Through the redevelopment of sites, existing vegetation is often lost and not replaced. The City Plan protects those trees identified as "heritage" or "notable" and the subdivision process protects other trees which are considered to be "significant". The highest degree of protection applies to heritage trees.

Because Christchurch is largely built on a flat plain, trees and shrubs play an important role in creating relief, contributing to visual amenity and attracting native birds.

The amount of private open space available for new planting and to retain existing trees is influenced by rules concerning building density and setback from boundaries. The rules do not require new planting for residential development but landscaping is required in business zones.

4.2.2 Policy: Garden City

To recognise and promote the "Garden City" identity, heritage and character of Christchurch.

A key aspect of achieving this policy will be maintaining and extending environments and vegetation types which compliment this image. A broad range of matters influence and contribute to this image, including the following:

- tree-lined streets and avenues.
- parks and developed areas of open space.

14.3.2 Policy: "Garden City" image identity

To acknowledge and promote the "Garden City" identity of the City by protecting, maintaining and extending planting which compliments this image

Volume 3: Part 8 Special Purpose Zone

14.3.5 Street Trees

Nearly half the length of streets within the city contains street trees, but the presence of very high quality street trees which add considerable presence to streets and neighbourhoods is confined to a relatively small proportion of the road network. These streets add particular character and amenity of the city, either in the form of avenues which form points into the city, or an important part of the local character of particular streets.

16. The District Court can order the pruning or removal of a tree under the Property Law Amendment Act 1975.
17. The Council has the legal right to approve or decline the application to remove the tree.

Have you considered the legal implications of the issue under consideration?

18. Yes, as per above.

5 Cont'd

ALIGNMENT WITH LTCCP AND ACTIVITY MANAGEMENT PLANS

19. LTCCP 2006-16

Streets and Transport – page 151

- City Development – By providing a well-designed, efficient transport system and attractive street landscapes.

20. Funding is available in the Transport and Greenspace Unit Street Tree Capital Renewals budget for the removal and replacement of trees which are no longer appropriate species or no longer appropriate in their current position.

21. Retention of the tree is consistent with the Activity Management Plan provided the tree is structurally sound and healthy.

22. Removal and replacement of the tree is consistent with the Activity Management Plan.

23. Removing and not replacing the tree is not consistent with the Activity Management Plan.

Do the recommendations of this report support a level of service or project in the 2006-16 LTCCP?

24. Yes, as per above.

ALIGNMENT WITH STRATEGIES

25. Social Wellbeing Policy - Engage citizens and communities in decision making and policy implementation. Increase and maintain living standards sufficient to ensure everyone can participate in the life of the community and live lives they find fulfilling.

26. Removing and replacing the tree would be consistent with the Living Streets Strategy.

27. Removing and replacing the tree would be consistent with the Christchurch Urban Design Vision.

28. Removing and replacing the tree would be in keeping with the Garden City Image as per the City Plan.

29. Removing and not replacing the tree would not be in keeping with the Garden City Image as per the City Plan Volume 2 Section 14.3.2.

30. There is currently no policy for the pruning or removing of trees in public places. A Draft Tree Policy is being worked on.

Do the recommendations align with the Council's strategies?

31. The direction from the Council dated 14 August 2007 states that there is to be no city wide removal and replacement of Silver Birches for supposed health associations. The removal of Silver Birches or similar, are to be evaluated on a case by case basis and only to be removed for tree health and safety reasons, with them being replaced by another tree species.

CONSULTATION FULFILMENT

32. The consultation on the potential removal of the tree was carried out in May 2009. A letter and a questionnaire were sent to 33 residents surrounding the area of the Silver Birch tree (**refer Attachment 3**).

33. Residents were asked whether they support or do not support the removal of the tree.

5 Cont'd

34. Fourteen submissions were received in reply. Eleven (79 percent) supported the removal of the tree, three (21 percent) did NOT support the removal of the tree (**refer Attachment 4**).
35. In summary those who supported the removal of the tree have issues with the litter consisting of twigs, leaves and seeds from this tree(s), the size of the tree (too large for the street) and the pollen from this tree(s). Six respondents also requested that the remaining Silver Birch trees are removed in this street. Those who did NOT support the removal of this tree liked the aesthetic value of the tree(s) and believe it adds to the character of the street.
36. Those who responded to the questionnaire were also advised of the decision making process and how they could be involved (**refer Attachment 5**).

STAFF RECOMMENDATION

It is recommended that the Riccarton/Wigram Environment Committee recommend to the Riccarton/Wigram Community Board:

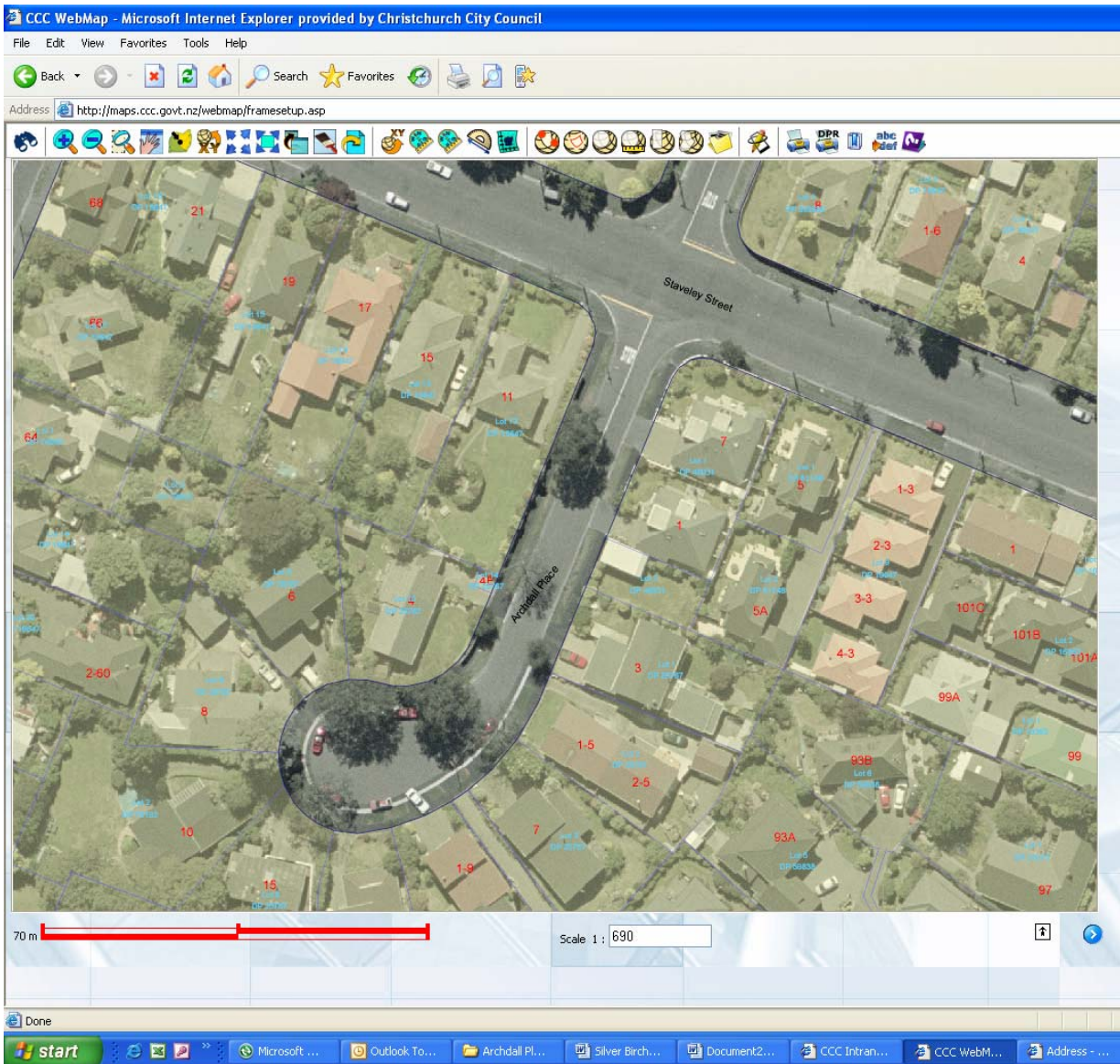
- (a) To decline the request to remove the Silver Birch tree outside number 11 Staveley Street.

and
- (b) That the Council continue to maintain the tree to internationally accepted arboricultural standards, practices and procedures and continue to monitor the tree for ongoing health and structural integrity.

Silver Birch tree opposite 1 Archdall Place, Avonhead:



Webmap image of Silver Birch Tree opposite 1 Archdall Place:



20. 7. 2009

- 9 -

Clause 5 – Attachment 3

CAPITAL DEVELOPMENT UNIT

13 May 2009

To the occupier

CHRISTCHURCH

Dear Sir/Madam

Re: Silver Birch Tree opposite 1 Archdall Place

The Christchurch City Council has received correspondence raising issues regarding the Silver Birch tree located opposite 1 Archdall Place. This particular tree was planted in 1970 by the local Council. Of the ten original Silver Birch trees planted, three still remain today.

The tree has recently been pruned to lift lower branches away from the road and footpath. This has also helped to make the stop sign on the corner of Staveley Street and Archdall Place more visible. The Council Arborist has confirmed that there are currently no major health and safety concerns associated with this tree which would warrant the Council to initiate its removal. And any future removals and replanting of trees in Archdall Place will be treated on an individual basis.

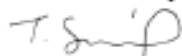
Part of the reporting process is therefore to gain feedback from local residents on the future of this tree. This feedback is valuable to us in ascertaining the feeling of the local community prior to any decision being made. This information, along with the above tree assessment will then make up the report to be presented to the Riccarton/Wigram Community Board, who has delegated authority to make the final decision.

Your feedback is very important to us so I would appreciate it if you could indicate your preferred option on the attached questionnaire and return it in the prepaid envelope by Friday 22 May 2009.

Should you have any questions or wish to discuss this proposal, please feel free to contact me at the Sockburn Service Centre, phone 941 6510.

Thank you for taking the time to fill out the questionnaire.

Yours sincerely



Tara Smith
Consultation Leader – Greenspace

Tara Smith • Consultation Leader – Greenspace • Tel 941 6510 • Mobile 027 209 4325 • Fax 941 6545 •
Tara.Smith@ccc.govt.nz • Christchurch City Council • Sockburn Service Centre PO Box 11 011 Sockburn •

20. 7. 2009

- 10 -

CAPITAL DEVELOPMENT UNIT

REPLY FORM
PROPOSED REMOVAL OF SILVER BIRCH TREE
OPPOSITE 1 ARCHDALL PLACE



I/we support the removal of the Silver Birch tree

I/we do not support the removal of the Silver Birch tree

Additional comments

.....
.....
.....
.....
.....
.....
.....

NAME.....

ADDRESS.....

PHONE.....

THANK YOU FOR YOUR FEEDBACK

Please return by Friday 22 May 2009 to Tara Smith, Consultation Leader, Sockburn Service Centre, PO Box 11 011, Sockburn, Christchurch

Privacy Act: The Capital Development Unit of the Christchurch City Council wishes to collect the personal information requested above for the purposes of communicating with you in regard to the development of open space. Providing this information is not compulsory. The information will be held by the Capital Development Unit and may be shared with other Council Units for the purpose of contacting you on related Council matters. You have the right to access and correct this information.

Tara Smith • Consultation Leader – Greenspace • Tel 941 6510 • Mobile 027 209 4325 • Fax 941 6545 • Tara.Smith@ccc.govt.nz • Christchurch City Council • Sockburn Service Centre PO Box 11 011 Sockburn •

ARCHDALL PLACE – PROPOSED SILVER BIRCH TREE REMOVAL

Consultation Summary

The consultation on this project was carried out in May 2009 and sent to 33 residents around the immediate perimeter of the Silver Birch tree opposite 1 Archdall Place. There was a 42% response rate with 14 questionnaires returned.

Submitters were asked whether they support or do not support the removal of the Silver Birch tree.

Silver Birch Tree Removal	Number of Responses	Percentage
<i>Yes – I support the removal of the Silver Birch tree</i>	11	79 %
<i>No – I do NOT support the removal of the Silver Birch tree</i>	3	21 %

While these figures indicate strong support for the Silver Birch tree to be removed, the following issues were also identified:

- Residents who support the removal of the tree are concerned with the litter caused by this tree(s)
 - “We are tired of cleaning up the mess”
 - “Leaves litter around the small street and people’s private frontages”
 - “the amount of leaves which drop from the tree and are blown up our drive in the Autumn and which have to be removed to be a considerable nuisance”
 - “however it is the seeds that block the pump causing our garage to flood six to ten times over the past twenty four years”
- Residents who support the removal of the tree are also concerned with the pollen from the Silver Birch tree(s)
 - “Pollen in season leaves its yellow dust everywhere”
 - “it deposits large quantities of twigs, seeds and pollen”
- Some residents also requested the removal of the remaining Silver Birch trees in Archdall Place
 - “Yes we are in support for the complete removal of this tree and are in full support of the other two being removed also”
 - “We would also support the removal of the other two Silver Birch trees”
 - “Our street also has two more large Silver Birch trees and these should also be considered for removal”
- The trees add character to the street.
 - “Mature trees add much to the character of Archdall Place”
 - “They add to the quality of life in the street”

CAPITAL DEVELOPMENT UNIT

28 May 2009

CHRISTCHURCH

Dear Sir/Madam

Silver Birch Tree Removal Opposite 1 Archdall Place – Avonhead

Thank you for responding to my questionnaire of 13 May 2009 regarding the removal of the Silver Birch tree opposite 1 Archdall Place in Avonhead.

Results from the consultation were as follows:

- 33 households received the questionnaire
- 14 responded
- 11 were in support of the removal of the tree
- 3 were not in support of the removal of the tree

Both the consultation information and the arboricultural assessment will be included in a report in relation to this tree. This report will then be first heard by the Riccarton/Wigram Environment Committee. This committee will then make a recommendation to the Riccarton/Wigram Community Board who then have delegated authority to make a final decision on the future of this tree. Details of the Riccarton/Wigram Environment Committee meeting are:

Monday 20 July 2009
8.00am
The Boardroom (upstairs)
Sockburn Service Centre
149 Main South Road

The next Riccarton/Wigram Community Board meeting after this Environment Committee Meeting, where the final decision on this tree will be made, is Tuesday 4 August, 5pm, Sockburn Service Centre.

These meetings are both public meetings and you are more than welcome to attend. Anyone wishing to speak at either meeting (you are only able to speak at one of these meetings, not both) in relation to this report should contact the Community Board Advisor, Liz Beaven, on phone 941 6501, no later than Monday 13 July 2009 to request speaking rights.

Information relating to this project including the above report (when it becomes available) can be accessed from the Christchurch City Council website, by clicking on the "Council Projects in your area" heading on the left hand side of the website and searching on "Archdall Place". Or by typing this link into your web browser: <http://www.ccc.govt.nz/webapps/projectnotices/>

Should you have any further enquiries please feel free to contact me at the Sockburn Service Centre on phone 941 6510.

Yours sincerely



Tara Smith
Consultation Leader – Greenspace

Tara Smith • Consultation Leader – Greenspace • Tel 941 6510 • Mobile 027 209 4325 • Fax 941 6545 •
Tara.Smith@ccc.govt.nz • Christchurch City Council • Sockburn Service Centre PO Box 11 011 Sockburn •

20. 7. 2009

- 13 -

6. ELECTED MEMBERS' INFORMATION EXCHANGE