

**BURWOOD/PEGASUS COMMUNITY BOARD
AGENDA**

MONDAY 16 FEBRUARY 2009

AT 5PM

**IN THE BOARDROOM,
CORNER BERESFORD AND UNION STREET,
NEW BRIGHTON**

Community Board: David East (Chairperson), Nigel Dixon, Tina Lomax, Gail Sheriff, Tim Sintes, Linda Stewart and Chrissie Williams.

Community Board Adviser
Peter Dow
Phone 941 5305 DDI
Email: peter.dow@ccc.govt.nz

PART A - MATTERS REQUIRING A COUNCIL DECISION
PART B - REPORTS FOR INFORMATION
PART C - DELEGATED DECISIONS

INDEX	PG NO		
PART C	2	1.	APOLOGIES
PART C	2	2.	CONFIRMATION OF MINUTES – 2 FEBRUARY 2009
PART B	2	3.	DEPUTATIONS BY APPOINTMENT 3.1 Marc Austin re Delamare Park - Trees 3.2 Paula Rountree re Aranui Cluster - Safety Improvement Works
PART B	2	4.	PRESENTATION OF PETITIONS
PART B	2	5.	NOTICE OF MOTION
PART B	2	6.	CORRESPONDENCE
PART B	2	7.	BRIEFINGS
PART C	6	8.	ARANUI CLUSTER - SAFETY IMPROVEMENT WORKS
PART C	16	9.	WAIROA STREET - PROPOSED STOP CONTROL
PART C	19	10.	BURWOOD/PEGASUS YOUTH DEVELOPMENT FUNDING SCHEME - APPLICATIONS

16. 2. 2009

- 2 -

PART B 23 11. COMMUNITY BOARD ADVISER'S UPDATE
11.1 Current Issues
11.2 2008/09 Board Discretionary Response and Youth Development Funding
11.3 Customer Service Requests - December 2008 and January 2009

PART B 23 12. BOARD MEMBERS' QUESTIONS

1. **APOLOGIES**

2. **CONFIRMATION OF MINUTES – 2 FEBRUARY 2009**

The report of the Board's ordinary meeting of 2 February 2009 is **attached**.

3. **DEPUTATIONS BY APPOINTMENT**



3.1 **MARC AUSTIN RE DELAMARE PARK - TREES**

Marc Austin of Woodlands Place has been granted speaking rights to outline to the Board his concerns regarding the seasonal nuisance associated with the poplar trees located on the park adjacent to his property.

3.2 **PAULA ROUNTREE RE ARANUI CLUSTER - SAFETY IMPROVEMENT WORKS**

Paula Rountree of Rowan Avenue has been granted speaking rights to address the Board with concerns regarding aspects of the Aranui Cluster project.

Clause 8 of this agenda refers.

4. **PRESENTATION OF PETITIONS**

5. **NOTICES OF MOTION**

6. **CORRESPONDENCE**

7. **BRIEFINGS**

**BURWOOD/PEGASUS COMMUNITY BOARD
2 FEBRUARY 2009**

**Minutes of a meeting of the Burwood/Pegasus Community Board
held on Monday 2 February 2009 at 5pm in the Board Room,
Corner Beresford and Union Streets, New Brighton**

PRESENT: David East (Chairman), Nigel Dixon, Tina Lomax, Gail Sheriff,
Tim Sintes, Linda Stewart and Chrissie Williams

The Board reports that:

PART A - MATTERS REQUIRING A COUNCIL DECISION

1. NEW BRIGHTON PIER - LIAISON GROUP

In its consideration of appointing a Board representative to the Pier Liaison Group, the Board also discussed the matter of the role and function of the group including its intended terms of reference. Clause 7 (Part B) of these minutes refer.

The Board understands that the business to be conducted by the Liaison Group may from time to time involve reporting back to the Council.

In this regard, the Board considers that given the community membership of the group and the localised activities conducted from the pier, that it be granted the authority to receive and consider reports on the activities of the Pier Liaison Group.

BOARD RECOMMENDATION

That the Council be requested to grant delegated authority to the Burwood/Pegasus Community Board to oversee and approve the activities of the Pier Liaison Group including the group's Terms of Reference.

PART B - REPORTS FOR INFORMATION

2. DEPUTATIONS BY APPOINTMENT

Nil.

3. PRESENTATION OF PETITIONS

Nil.

4. NOTICES OF MOTION

Nil.

5. CORRESPONDENCE

The Board **received** the following tabled items of correspondence:

- Christchurch City Council – acknowledgement of the Board's submission made on the Council's Draft Waste Management Bylaw including a summary of the Council's approved changes.
- Environment Canterbury – Canterbury Regional Environment Report 2008
- New Brighton Volunteer Fire Brigade – thanking the Board for its grant towards the printing and publishing costs of the Brigade's centenary book.

6. BRIEFINGS

Nil.

7. COMMUNITY BOARD ADVISER'S UPDATE

The Board **received** information from the Community Board Adviser on forthcoming events and items of current interest. These included a calendar of consultations and submission opportunities in relation to the Draft LTCCP 200919, Proposed Alcohol Restrictions in Public Places Bylaw, Draft Water Supply Strategy, Community Facilities Network Vision – Burwood/Pegasus and Social Housing – Proposal for Funding the Council's Housing Portfolio.

Also, the Board **decided** that Tim Sintes be appointed as the Board's representative on the Pier Liaison Group with it being noted that the group's first meeting was scheduled for 7pm on Wednesday 18 February 2009. Clause 1 (Part A) records a Board recommendation to the Council on a related matter.

An update was also **received** from the Consultation Leader Greenspace on local projects, and members were reminded to complete and respond on the circulated contents of the Board's current objectives.

Information on the installation of the local broadband network by Telecom's Chorus, was tabled.

In relation to its programme of community engagement, the Board **agreed** that Seminar meetings be arranged over the coming months with local Members of Parliament, Environment Canterbury's Constituent Councillors (Christchurch East, Christchurch North, North Canterbury), local school principals, and the police.

8. BOARD MEMBERS' QUESTIONS

Nil.

PART C - REPORT ON DELEGATED DECISIONS TAKEN BY THE BOARD

9. CONFIRMATION OF MEETING MINUTES – 15 DECEMBER 2008

The Board **resolved** that the minutes of its ordinary meeting held on 15 December 2008, be confirmed.

The meeting concluded at 5.51pm

CONSIDERED THIS 16TH DAY OF FEBRUARY 2009

**DAVID EAST
CHAIRMAN**

8. ARANUI CLUSTER - SAFETY IMPROVEMENT WORKS

General Manager responsible:	General Manager City Environment, DDI 941- 8608
Officer responsible:	Transport and Greenspace Unit Manager
Author:	Brian Boddy, Capital Development Unit Consultation Leader

PURPOSE OF REPORT

1. The purpose of this report is to seek the Burwood/Pegasus Community Board's approval that the Aranui Cluster Safety Improvement Works Project (refer **Attachments 1 to 4**) proceed to final design, tender and construction.

EXECUTIVE SUMMARY

2. The primary objectives for the project are as follows:
 - (a) Reduce the speed of traffic entering Farnborough Street, Marlow Road (north), Portsmouth Street, and Rowan Avenue (north), from Pages Road.
 - (b) Discourage motorists from using these streets as short cuts.
3. This project will reduce the road width at the four intersections with Pages Road and also provide appropriate kerb radii to reduce the speed of vehicles entering this cluster of streets. The threshold treatments at all four intersections will alert the drivers that they are entering a residential area and will clearly provide a separation between these local roads and Pages Road (a major arterial road).

FINANCIAL IMPLICATIONS

4. The proposed safety improvement works for the Aranui Cluster project are recommended in the Transport and Greenspace Unit's capital programme for implementation in the 2008/09 financial year. The current scheme estimate for the Aranui Cluster (involving the Farnborough, Marlow, Portchester and Rowan Street intersections with Pages Road) is \$283,000.

Do the recommendations of this report align with 2006-16 LTCCP budgets

5. Funding is provided from within the Transport and Greenspace Capital Programme in the 2006/16 Long Term Council Community Plan (LTCCP).

LEGAL CONSIDERATIONS

6. Part 1, Clause 5 of the Christchurch City Council Traffic and Parking Bylaw 2008 provides the Council with the authority to install parking restrictions by resolution.
7. The Community Boards have delegated authority from the Council to exercise the delegations as set out in the Register of Delegations dated April 2008. The list of delegations for the Community Boards includes the resolution of parking restrictions and traffic control devices.
8. The installation of any parking restriction signs and/or markings must comply with the Land Transport Rule: Traffic Control Devices 2004.

Have you considered the legal implications of the issue under consideration?

9. As above.

ALIGNMENT WITH LTCCP AND ACTIVITY MANAGEMENT PLANS

10. This project aligns with the Transport and Greenspace Unit's Asset Management Plan, and the Safety Improvements objectives of the Capital Works Programme, page 85, Our Community Plan 2006-2016.

8 Cont'd

ALIGNMENT WITH STRATEGIES

11. The recommendations in this report align with current Council strategies including the Parking Strategy 2003, the Road Safety Strategy 2004, the Christchurch Public Passenger Transport Strategy 1998, the Cycling Strategy 1998 and 2003 and Pedestrian Strategy 2001; and are consistent with the requirements for local roads as defined in the City Plan.

Do the recommendations of this report support a level of service or project in the 2006-16 LTCCP?

12. As above.

CONSULTATION FULFILMENT

13. A seminar was held with the Burwood/Pegasus Community Board on 6 October 2008 advising the Board of the proposed consultation programme, prior to the publicity pamphlet (including consultation plans) being distributed to the Aranui Cluster residents and stakeholders for consultation. The feedback period was from 28 October to 17 November 2008. Approximately eight hundred pamphlets were distributed in the Aranui Cluster area plus those mailed and emailed to other interest groups. Four public meetings were also held. Forty-eight responses were received. Twenty-eight respondents were in general support of the proposal, twelve were in opposition. The key issues raised related to landscaping, on-street parking and traffic safety concerns.
14. Changes made as a result of community consultation are as follows:
 - (a) The tactile paving for the sight impaired will be installed to meet current regulations.
 - (b) The proposed trees will be reviewed to check the species are appropriate and their position does not conflict with underground services or reduce sight lines for drivers.
 - (c) No stopping restrictions on Pages Road were checked to confirm they were long enough to preserve/provide adequate sight lines for drivers exiting from the four side streets in the cluster.

STAFF RECOMMENDATION

It is recommended that the Burwood/Pegasus Community Board:

- (a) Approve the plans as shown on **Attachments 1, 2, 3 and 4** for final design, tender and construction.
- (b) Approve the following parking restrictions:

Marlow Road

- (i) That all the existing parking restrictions be revoked on the north side of Pages Road between 11 metres west of Marlow Road and 11 metres east of Marlow Road.
- (ii) That the stopping of vehicles be prohibited at any time on the north side of Pages Road commencing at its intersection with Marlow Road and extending 11 metres in a westerly direction.
- (iii) That the stopping of vehicles be prohibited at any time on the north side of Pages Road commencing at its intersection with Marlow Road and extending 11 metres in an easterly direction.
- (iv) That the stopping of vehicles be prohibited at any time on the west side of Marlow Road commencing at its intersection with Pages Road and extending 11 metres in a northerly direction.

8 Cont'd

- (v) That the stopping of vehicles be prohibited at any time on the east side of Marlow Road commencing at its intersection with Pages Road and extending 22 metres in a northerly direction.

Rowan Avenue

- (vi) That all the existing parking restrictions be revoked on the north side of Pages Road between 15 metres west of Rowan Avenue and 15 metres east of Rowan Avenue.
- (vii) That the stopping of vehicles be prohibited at any time on the north side of Pages Road commencing at its intersection with Rowan Avenue and extending 15 metres in a westerly direction.
- (viii) That the stopping of vehicles be prohibited at any time on the north side of Pages Road commencing at its intersection with Rowan Avenue and extending 15 metres in an easterly direction.
- (ix) That the stopping of vehicles be prohibited at any time on the west side of Rowan Avenue commencing at its intersection with Pages Road and extending 44 metres in a northerly direction.
- (x) That the stopping of vehicles be prohibited at any time on the east side of Rowan Avenue commencing at its intersection with Pages Road and extending 49 metres in a northerly direction.

Farnborough Street

- (xi) That all the existing parking restrictions be revoked on the north side of Pages Road between 18 metres west of Farnborough Street and 12 metres east of Farnborough Street.
- (xii) That the stopping of vehicles be prohibited at any time on the north side of Pages Road commencing at its intersection with Farnborough Street and extending 18 metres in a westerly direction.
- (xiii) That the stopping of vehicles be prohibited at any time on the north side of Pages Road commencing at its intersection with Farnborough Street and extending 12 metres in an easterly direction.
- (xiv) That the stopping of vehicles be prohibited at any time on the west side of Farnborough Street commencing at its intersection with Pages Road and extending 22 metres in a northerly direction.
- (xv) That the stopping of vehicles be prohibited at any time on the east side of Farnborough Street commencing at its intersection with Pages Road and extending 13 metres in a northerly direction.

Portchester Street

- (xvi) That all the existing parking restrictions be revoked on the north side of Pages Road between 15 metres west of Portchester Street and 13 metres east of Portchester Street.
- (xvii) That the stopping of vehicles be prohibited at any time on the north side of Pages Road commencing at its intersection with Portchester Street and extending 15 metres in a westerly direction.
- (xviii) That the stopping of vehicles be prohibited at any time on the north side of Pages Road commencing at its intersection with Portchester Street and extending 13 metres in an easterly direction.

8 Cont'd

- (xix) That the stopping of vehicles be prohibited at any time on the west side of Portchester Street commencing at its intersection with Pages Road and extending 24 metres in a northerly direction.
- (xx) That the stopping of vehicles be prohibited at any time on the east side of Portchester Street commencing at its intersection with Pages Road and extending 24 metres in a northerly direction.

8 Cont'd

BACKGROUND

15. The Aranui Local Area Traffic Management Scheme (L.A.T.M.S) adopted in June 1997 identifies residents concerns for traffic in this area. Residents from the area of Farnborough Street, Portchester Street, Rowan Avenue, and Marlow Road had expressed concern at the increased traffic movements on these streets since the opening of ANZAC Drive and the closure of Carisbrooke and Eureka Streets.
16. A detail investigation has been carried out using Land Transport New Zealand's Crash Analysis System (CAS) over the last five years for all four intersections. Twenty crashes in total were found in the study area. The majority (i.e. 50%) of all crashes occurred at Marlow/Pages Road intersection whereas only two crashes each were recorded on Portchester/Pages Road and Farnborough/Pages Road intersections. Mainly 50% of crashes noted at Rowan Avenue/Pages Road intersection and Marlow/Pages Road intersection were related to vehicles failing to give way when turning to non-turning traffic and the remaining were loss of control and rear end type crashes. The scheme includes threshold treatment that encourages slowing down turning traffic and also may help in reducing potential conflict points considerably.
17. This project does not claim to provide a solution to the speeding issues along Marlow Road and Rowan Avenue; however, a speed survey will need to be carried out following the installation of the recommended threshold treatments to decide whether further traffic calming devices are required.
18. A street lighting upgrade has been carried out as part of the works as required. The proposed new works will involve replacing an existing concrete pole in Farnborough Street with a new sectional steel, ground planted "Subdivisional" 7.4 metre mounting height lighting pole, installed 0.7 metres behind the kerb for compliance and re-installing the existing luminaire.

THE OPTIONS

19. Three options were developed for comparison for the Aranui Cluster. These options are as follows:

Option 1 involves making no changes to the existing street arrangement. All four streets would remain at the current widths and no alterations would be made to the intersections. Three of these streets are nine metres wide, except Rowan Avenue which is 12 metres wide. Option 1 has not been selected as the preferred option, as it does not meet any of the project objectives for the Aranui Cluster.

Option 2 (refer **Attachments 1 to 4**) is the preferred option and involves improvements to all four the intersections with the proposed installation of threshold treatments at the intersections of four streets with Pages Road. This will involve the narrowing of four streets at the intersections. The length of threshold treatment will feature raised platforms in Farnborough, Marlow and Portchester Streets. There is a bus route along Portchester Street. New landscaping will be planted on these intersections as part of the work.

Option 3 is similar to option 2, with the following modifications.

- (a) Installation of left-in and left-out islands at Rowan Avenue to obstruct right turns and in consequence reducing the number of vehicles entering the cluster.
- (b) Type C Modified Threshold Treatments will still be installed at three other intersections.
- (c) Along with the threshold treatments detailed above two other traffic calming devices are proposed along Marlow Road and Rowan Avenue.

8 Cont'd

20. This scheme will see the removal of approximately 30 to 35 on-street parking spaces in the cluster. However, the on-street parking demand is low and the proposed parking supply would still be sufficient to cater for the parking demand. This scheme will see the removal of approximately 210 metres of existing kerb and flat channel due to the proposed new installation of threshold treatments. In conclusion, although Option 3 meets all the project objectives it was not chosen as the preferred option because it has not been proved that the placing of traffic calming devices is a necessary option to reduce speeds along these streets. This option would also add significant cost to the project and for now, the objectives can be met using lower cost options.

THE PREFERRED OPTION

21. Option 2 proposes threshold treatments and traffic calming measures on all four intersections.

Marlow Road/Pages Road intersection (plan TP 308002)

- (a) Type B threshold treatment;
- (b) Narrowing down the road width to 7 metres and also tightening the road radii on Marlow Road; and
- (c) Change in road alignment at the intersection to reduce the speed of through movements from both the north and south ends of Marlow Road.

Rowan Avenue/Pages Road intersection (plan TP 308003)

- (a) Widening the pedestrian refuge island on Rowan Avenue including the provision of chicanes as shown in Figure 2 to slow down vehicles at the intersection; and
- (b) 6.2 metre wide road along the chicanes and 4.6 metre wide lanes at the intersection.

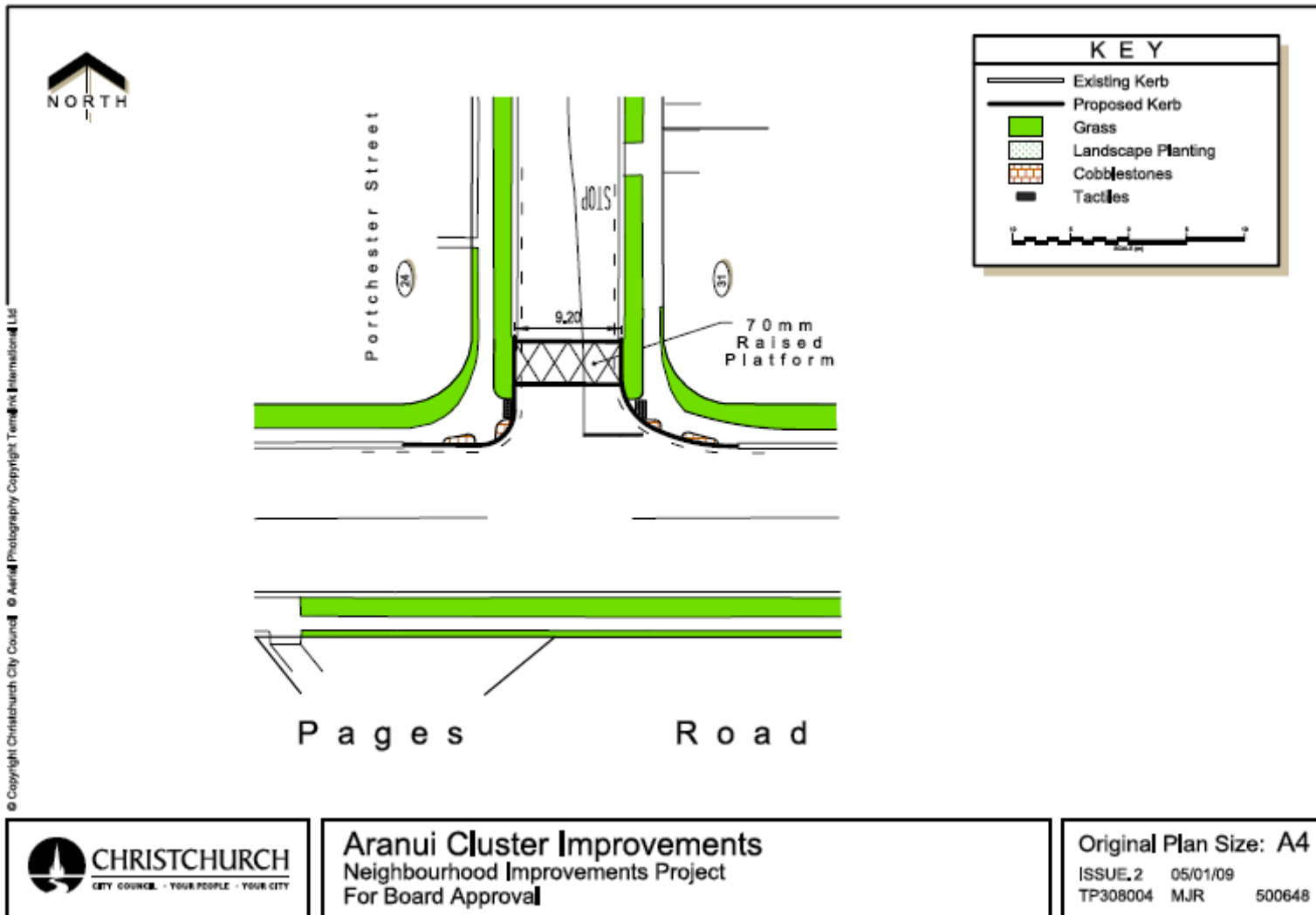
Portchester Street/Pages Road Intersection (plan TP 30804)

- (a) Prioritising (Stop sign) intersection; and
- (b) Type C threshold treatment with composite kerb radii to allow efficient movement of buses.

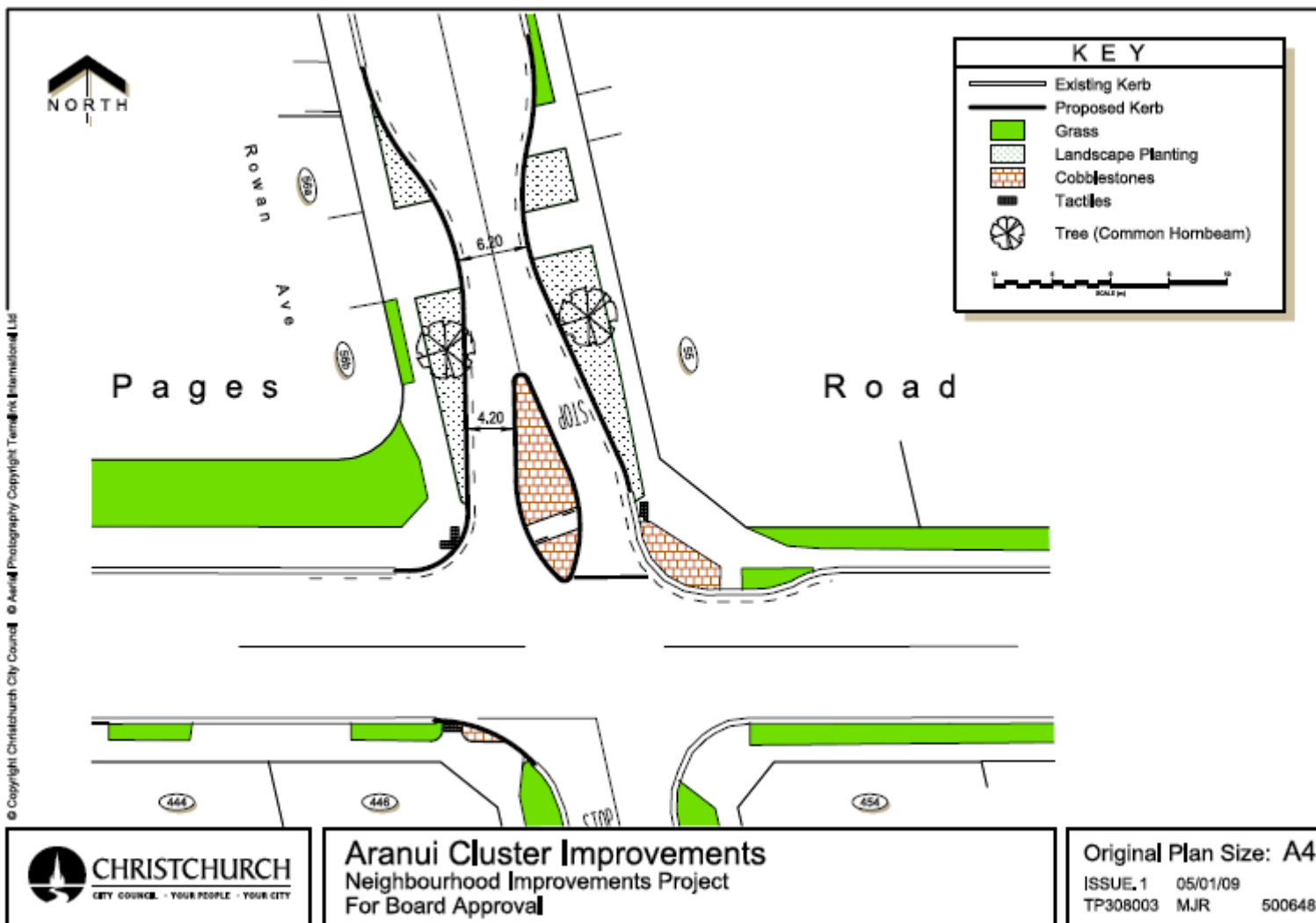
Farnborough Road/Pages Road intersection (plan TP 308005)

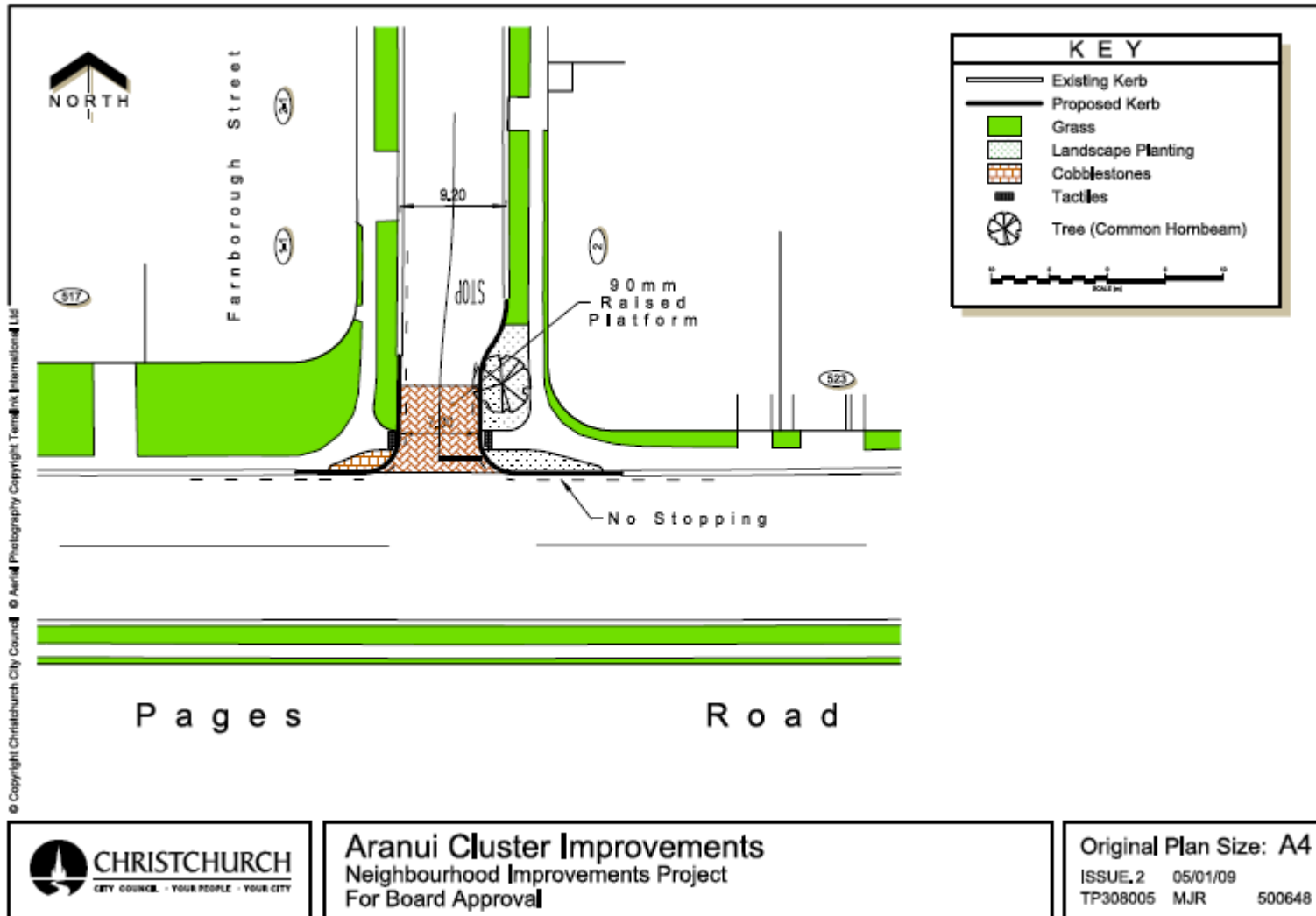
- (a) Prioritising (Stop sign) intersection; and
- (b) Type C threshold treatment.

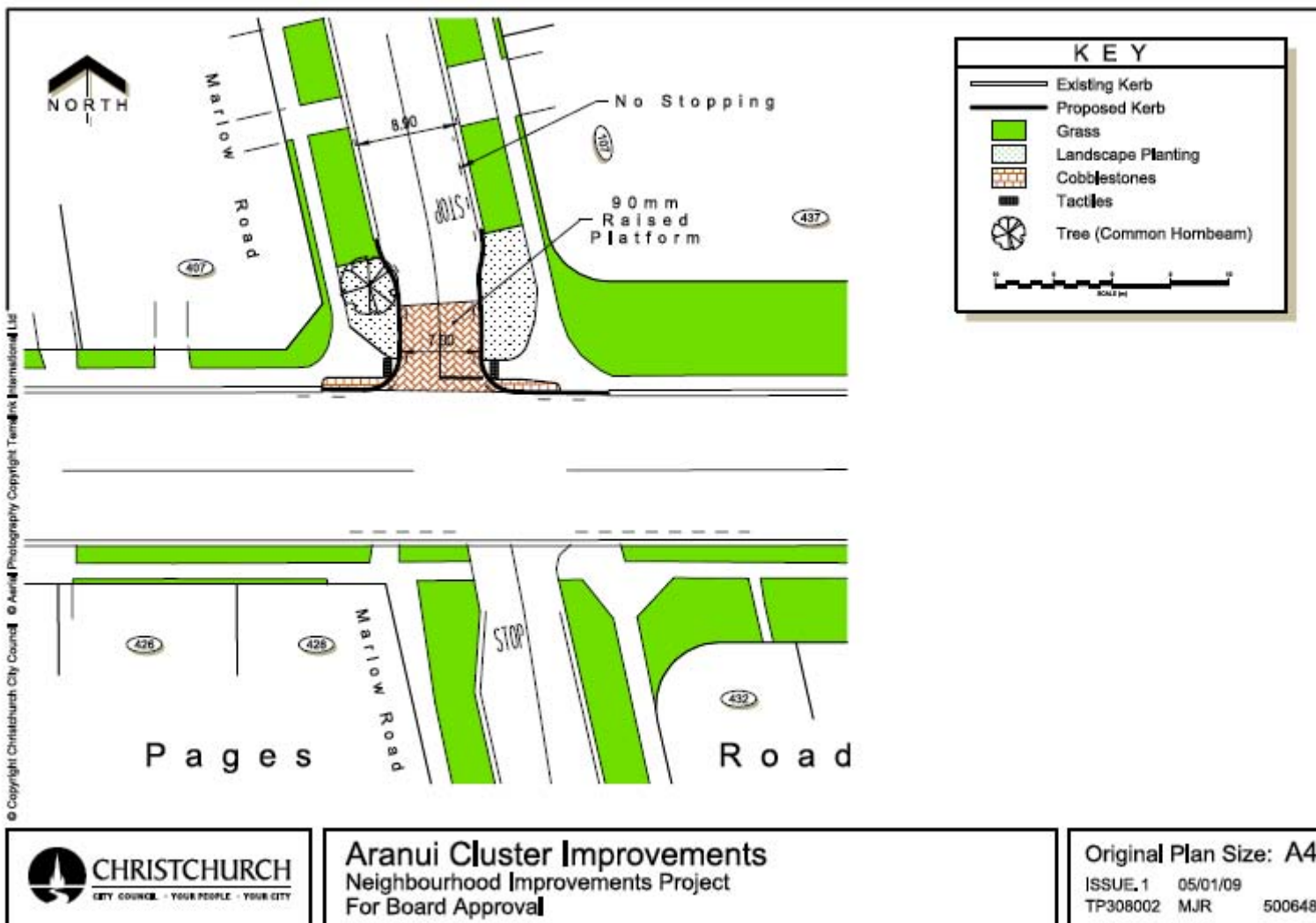
22. To improve traffic safety this scheme will see the removal of approximately 16 to 20 on-street parking spaces in the cluster. However, the on-street parking demand is low and the proposed on-street parking facilities will still be sufficient to cater for the parking demand.
23. Approximately 210 metres of existing kerb and flat channel will be reconstructed due to the proposed new installation of threshold treatments.
24. This proposal will see significant aesthetic improvement to the streets. It will also contribute towards reducing the number of vehicles travelling through the area.



© Copyright Christchurch City Council © Aerial Photography Copyright TerraLink International Ltd







9. WAIROA STREET – PROPOSED STOP CONTROL

General Manager responsible:	General Manager City Environment, DDI 941-8608
Officer responsible:	Transport and Greenspace Manager
Author:	Jon Ashford

PURPOSE OF REPORT

1. The purpose of this report is to seek the Burwood/Pegasus Community Board's approval that a Stop control be placed against Wairoa Street at its intersection with Pages Road.

EXECUTIVE SUMMARY

2. The Network Operations Team has received a request from the Bexley Residents' Association that a Stop control be installed on Wairoa Street at its intersection with Pages Road. Please refer to the **attached** plan.
3. The intersection of Wairoa Street and Pages Road is an uncontrolled "T" junction where the normal "*give way to the right*" rule applies. Wairoa Street intersects with Pages Road just to the west of the New Brighton Bridge. Pages Road is classified as a Major Arterial and has a 50 kilometres per hour speed limit in this area. Wairoa Street is a local road with a 50 kilometres per hour speed limit and is intersected by several other local roads in the Bexley area.
4. The height of the Pages Road carriageway at the crown of the New Brighton Bridge, together with the change of alignment of Pages Road, restricts the view of oncoming traffic for vehicles turning out of Wairoa Street and vehicles turning right into Wairoa Street from Pages Road. The bridge railings further obstruct the view of oncoming traffic for vehicles turning out of Wairoa Street.
5. There are existing No Stopping restrictions at this intersection.
6. The Bexley Residents' Association have expressed their concerns that the restricted view of fast moving traffic coming over the bridge, together with confusion over who has right of way when vehicles are turning right into Wairoa Street from Pages Road, make this a difficult intersection to negotiate. Whilst there is only one recorded crash at this intersection over the past five years, staff have been advised by local residents that near misses occur frequently.
7. Staff have investigated this intersection and recommend that a Stop control against Wairoa Street is the appropriate control at this location in accordance with the MOTSAM (Manual of Traffic Signs and Markings) guidelines regarding visibility requirements at intersections.
8. The proposed Stop control against Wairoa Street will improve the safety at this intersection by requiring vehicles exiting Wairoa Street to stop and confirm it is safe before pulling out. It will also end the current confusion by giving right of way to traffic turning right from Pages Road into Wairoa Street and reduce the queuing of vehicles in Pages Road waiting to turn right into Wairoa Street.
9. The proposed installation of a Stop control was initiated by the Bexley Residents' Association and has their support. The four properties closest to the proposed Stop control were consulted but no responses were received. There are no properties on the east side of Wairoa Street as this forms the banks of the Avon River.

FINANCIAL IMPLICATIONS

10. The estimated cost of this proposal is approximately \$500.

Do the Recommendations of this Report Align with 2006-16 LTCCP budgets?

11. The installation of road markings and signs is within the LTCCP Streets and Transport Operational Budgets.

9 Cont'd

LEGAL CONSIDERATIONS

12. The Community Boards have delegated authority from the Council to exercise the delegations as set out in the Register of Delegations dated April 2008. The list of delegations for the Community Boards includes the resolution on stop controls.
13. The installation of any signs and/ or markings associated with traffic control devices must comply with the Land Transport Rule: Traffic Control Devices 2004.

Have you considered the legal implications of the issue under consideration?

14. As above.

ALIGNMENT WITH LTCCP AND ACTIVITY MANAGEMENT PLANS

15. Aligns with the Streets and Transport activities by contributing to the Council's Community Outcomes-Safety and Community.

Do the recommendations of this report support a level of service or project in the 2006-16 LTCCP?

16. As above.

ALIGNMENT WITH STRATEGIES

17. The recommendations align with the with Council Strategies including the Pedestrian Strategy 2001, Road Safety Strategy 2004 and the Safer Christchurch Strategy 2005.

Do the recommendations align with the Council's Strategies?

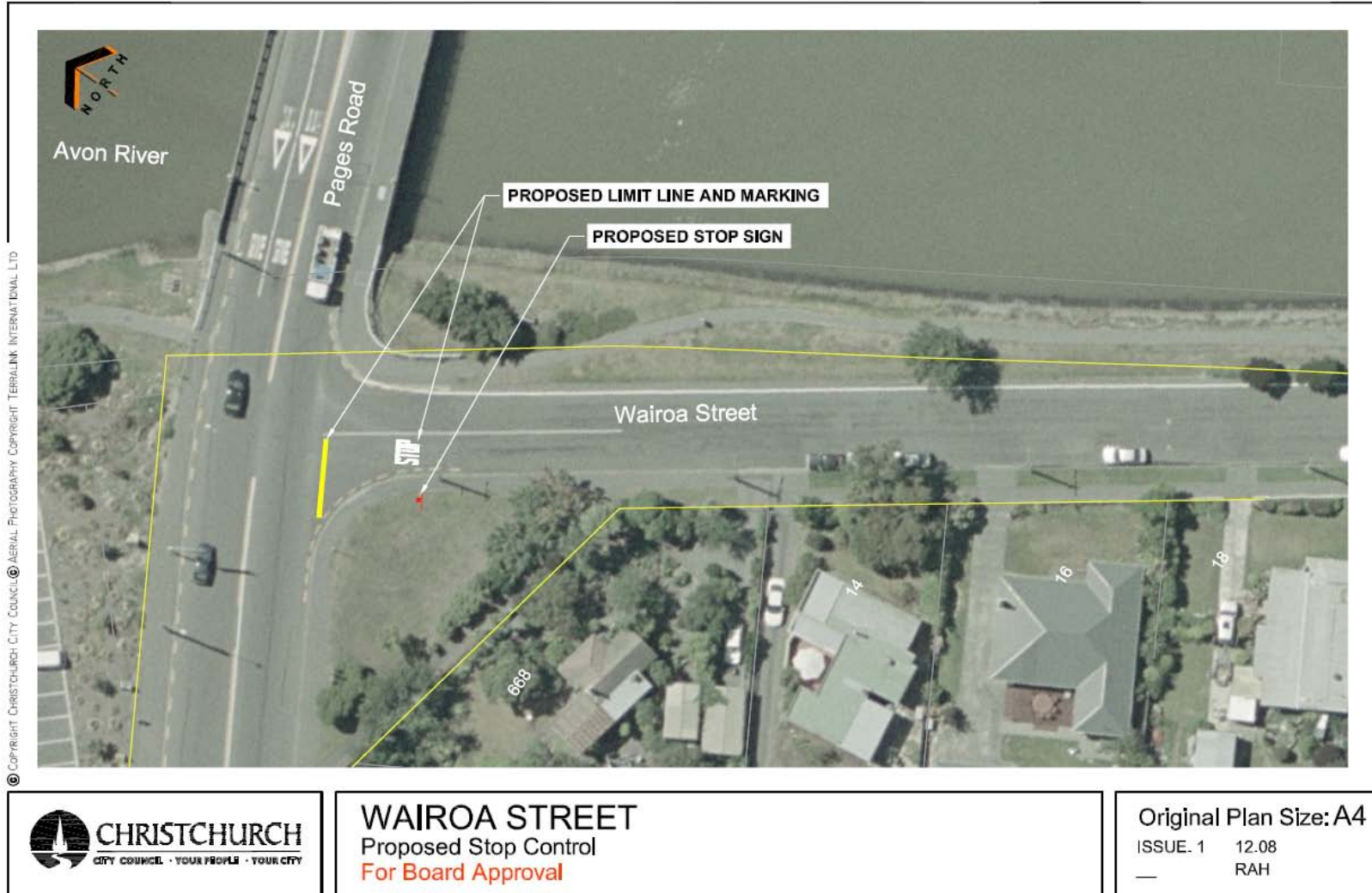
18. As above.

CONSULTATION FULFILMENT

19. The Bexley Residents' Association support this proposal.
20. The residents of numbers 14, 16 and 18 Wairoa Street and 668 Pages Road, being the four closest properties to the proposed Stop control, were consulted by letter but no responses were received.

STAFF RECOMMENDATION

It is recommended that the Burwood/Pegasus Community Board approve that a Stop control be placed against Wairoa Street at its intersection with Pages Road.



© COPYRIGHT CHRISTCHURCH CITY COUNCIL © AERIAL PHOTOGRAPHY COPYRIGHT TERRALINK INTERNATIONAL LTD

10. BURWOOD/PEGASUS YOUTH DEVELOPMENT FUNDING SCHEME - APPLICATIONS

General Manager responsible:	General Manager Community Services, DDI 941-8534
Officer responsible:	Recreation and Sports Unit Manager
Author:	Sarah Benton, Community Recreation Adviser

PURPOSE OF REPORT

1. The purpose of this report is to present for the Board's consideration, three applications for funding assistance from the 2008/09 Youth Development Funding Scheme.

EXECUTIVE SUMMARY

2. Funding is being sought by:
 - (a) Finn Cantlon, 12 year old of Birch Street, Bexley and Liam Connor Henare, 12 year old of Hampshire Street, Aranui, to represent the Canterbury Kiwis Ice Hockey team at the Friendship Tournament in Japan from 28 April to 5 May 2009.
 - (b) Nick Johnston, 19 year old of Goodman Street, Shirley, to represent Canterbury Kiwis Cricket team to tour northern New South Wales, Australia from 3 January to 18 January 2009.
3. This is the first all of the applicants have approached the Board for funding support.

FINANCIAL IMPLICATIONS

4. The following tables detail event expenses and funding requested for the applicants:

EXPENSES FOR FINN CANTLON AND LIAM HENARE (EACH)	Cost (NZ \$)
Flights	1,847
Accommodation (3 Nights)	330
Food	300
Ground Transport	632
Tournament Fee & welcome	56
Uniform and gear	832
Facility Hire (Ice Time)	718
Total Cost – includes above expenses	\$5484
Amount raised by applicants to date	\$385 each
Amount requested from Board for Finn Cantlon and Liam Henare.	\$500 each

EXPENSES FOR NICK JOHNSTON	Cost (NZ \$)
Canterbury Cricket Association levy for travel, accommodation and tour expenses. Uniform provided and some to keep.	1,350
Total Cost – includes above expenses	1,350
Amount raised by applicant to date	500
Amount requested from Community Board	\$750

The current balance in the fund is **\$1,300**

Do the Recommendations of this Report Align with 2006-16 LTCCP budgets?

5. Yes

10 Cont'd

LEGAL CONSIDERATIONS

6. There are no legal issues to be considered.

Have you considered the legal implications of the issue under consideration?

7. Not applicable.

ALIGNMENT WITH LTCCP AND ACTIVITY MANAGEMENT PLANS

8. Yes, relates to 2008-09 Community Board Funding Allocations.

Do the recommendations of this report support a level of service or project in the 2006-16 LTCCP?

9. Yes, as mentioned above.

ALIGNMENT WITH STRATEGIES

10. Physical Recreation and Sport Strategy.

Do the recommendations align with the Council's strategies?

11. Yes.

CONSULTATION FULFILMENT

12. Not applicable.

STAFF RECOMMENDATION

It is recommended that the Board consider allocating:

- (a) Finn Cantlon and Liam Connor Henare \$300 each to represent the Canterbury Kiwis Ice Hockey team at the Friendship Tournament in Japan from 28 April to 5 May 2009.
- (b) Nick Johnston \$200 to represent Canterbury Kiwis Cricket team to tour northern New South Wales, Australia from 3 January to 18 January 2009.

10 Cont'd

BACKGROUND OF APPLICANTS

Liam Connor Henare and Finn Cantlon

13. Liam and Finn are two of 17 children travelling to Hachinohe, Japan for the Friendship Ice Hockey Tournament in April 2009. The Friendship Tournament consists of 16 teams from the United States of America, Canada, New Zealand, Australia, South Korea, Germany, Russia, Japan and possibly South Africa.
14. The Friendship Tournament is held once every two years for 12 and 13 years olds to bring the youth of the world together in a tournament with an emphasis on fair play, sportsmanship and cultural exchange. 2009 will be the 20th Anniversary of the friendship tournament and as such will be returning to the city and country that first hosted it in 1989. The attendees are billeted with local families during the tournament. The teams participating are not national representative teams but rather, teams consisting of players who would not necessarily get to play other international teams or visit and compete in a country overseas. They are players who play ice hockey, not necessarily to win, but for the enjoyment of participating in their chosen sport and what kids do best, have fun. The cultural interaction between players cannot be undervalued and many players in the past have returned to New Zealand with a new understanding of people who are different in looks and cultures than themselves.
15. The New Zealand Ice Hockey Federation fully endorses the venture and considers it an opportunity not to be missed. Junior Vice President Ivana Gaffikin states *"It will increase their confidence, skill and experience, as well as help them learn about ice hockey at a more international level, while forging friendships with other players who have the same passion for the game of ice hockey"*.
16. The team has been raising funds by running Easter and Christmas raffles, selling chocolates and running four sausage sizzles. When Christchurch hosted the National Ice Hockey Competition in September the team sold miniature hockey sticks and bumper stickers that the parents made. They also ran a soup stall for the week. The team is in the process of organising a skate-a-thon in Hagley Park for the first term of school. The parents and children are committed to many fundraising activities.

Liam Connor Henare

17. Liam attends Aranui Primary School and has been playing ice hockey since he was five years old (2001) as a goalie. He wants to be a New Zealand representative like his uncle, brothers and cousin. He aims to be the #1 Canterbury goalie. He likes playing with his many friends and says he is good at sports and is getting fit.
18. Liam lives at home with his mum, two older brothers and younger sister who all play ice hockey. His mum works very hard to support her family and assist with Liam's trip. she. Liam sells horse manure and raffle tickets to raise some spending money for the trip. He also helps his family at ice hockey games to help pay mum back. Liam is on a waiting list for a job at the local shop and also plans to get a paper run.
19. Liam did not know much about Japan before he found out he was going there last year. But he says he is keen to meet people from different countries, make new friends and visit lots of places in Japan.

10 Cont'd

Finn Cantlon

20. Finn will be starting at Hagley Community College in 2009. He has been playing ice hockey for one year and it is his only sport which he loves. He moved from the Primary Development League and now plays in the Canterbury Minor Ice Hockey League. The League Co-ordinator, Anne Jarden says *"Finn became a very valuable player for the Leopards team, he was always a willing learner and gave every game and practice session his best"*. Finn was awarded Most Improved Player in the Leopards team in 2008. Anne believes that the extra coaching and experience from playing different countries will up skill the players and allow them to mature. She says that many players who attended friendship tours have become Canterbury Representatives.
21. Finn lives at home with his parents and younger brother. Finn has helped the team with fundraising by working on three local sausage sizzles. He also sold Christmas raffle tickets and will take part in the Skate-a-thon event planned at Hagley Park. Finn has started a paper round to help pay for the trip and to have some spending money. He was selected for the team much later than others so he has had less time to save.
22. Finn hopes to make friends with hockey players from around the world. Finn is excited about going to Japan and learn the culture as he usually picks Japan for school projects. He plans to learn Japanese when he starts high school in 2009. He is looking forward to seeing a Japanese house and eating their food.

Nick Johnston

23. Nick, a wicketkeeper, has been selected to play for the Canterbury Kiwis Cricket team to tour Northern New South Wales in Australia in January 2009. Nick finished at Shirley Boys' High School in 2006 where he received awards for his cricket and achieved level one cricket coach status. He has been playing cricket since he was four years old, has played representative cricket since he was 12 years old and currently plays for the East Christchurch Shirley Cricket Club. He aims to play State Cricket for Canterbury.
24. The Canterbury Kiwis tour to New South Wales is long established and beneficial to both Canterbury and the Northern New South Wales Associations. The tour usually involves some hard cricket against quality opposition. This is a good experience for the young men where Canterbury Cricket expects they will *'...conduct (themselves) well, treating your hosts, the tour and the game of cricket with the utmost respect at all times'*.
25. The East Christchurch Shirley Cricket Club's senior squad coach, Neville Lyons, says *"Nick is an excellent wicketkeeper, very good trainer and developing as a team leader, has developed his all round and mental skills that makes him very competitive"*.
26. Nick arrived back in Christchurch in mid September after a gap year in England where he was a contracted overseas player for the Kineton Cricket Club in Warwickshire. While there, he worked in the electronics assembly industry to support himself and coached junior players as part of his contract. He funded this gap year himself with help from his parents.
27. Nick lives at home and contributes by paying board. He works fulltime when he can as a store hand in between cricket commitments. Nick and a team mate applied for funding from their cricket club and received \$500 each. They both found out about their selection into the Canterbury Kiwis team only six weeks prior to the tour.

11. COMMUNITY BOARD ADVISER'S UPDATE

11.1 CURRENT ISSUES

**11.2 2008/09 BOARD DISCRETIONARY RESPONSE AND YOUTH DEVELOPMENT FUNDING
(ATTACHED)**

**11.3 CUSTOMER SERVICE REQUESTS – DECEMBER 2008 TO JANUARY 2009
(ATTACHED)**

12. BOARD MEMBER'S QUESTIONS

Processed by AMA to Accounts	Project/Service/Description/Group	Allocation 2008/2009
As at 5 Jan	Burwood/Pegasus Discretionary Response Fund	
	Budget	60,000
	<i>Allocations made</i>	
	Youth Development Fund - Opening Balance allocation	6,000
	<i>Allocations made</i>	
19-Aug	<i>Dylan Elliott (NZ Secondary School Soccer tournament in Napier)</i>	150
19-Aug	<i>Kegan Faichnie (NZ Secondary School Soccer tournament in Napier)</i>	150
6-Oct	<i>Kieran Smith (1st 11 Football Tournament - Napier)</i>	150
6-Oct	<i>Hayden Smith (1st 11 Football Tournament - Napier)</i>	150
6-Oct	<i>Ryan Faichnie (Pulse Premier Soccer League - UK)</i>	500
	<i>Hayden Needs (Study visit to Japan)</i>	500
6-Oct	<i>Daisy Thomas (ISA Surfing Championships Portugal)</i>	500
29-Oct	<i>Sharvelle Poissonnier (Sport Aerobics Nationals Wellington)</i>	200
29-Oct	<i>Junior Nooapii-Junior Oti (Secondary Schools National Basketball Champs)</i>	200
24-Nov	<i>Marseille Lucas (German Family Exchange)</i>	500
	<i>Ruby Hunt (Showcase Dance Championships in Australia)</i>	200
	<i>Holly Hunt (Showcase Dance Championships in Australia)</i>	200
4-Dec	<i>Jason Copley (New Zealand Student Jump Jam Leader Finals Auckland)</i>	100
4-Dec	<i>Levi Cunniffe (New Zealand Student Jump Jam Leader Finals Auckland)</i>	100
4-Dec	<i>Daniel Parker (Southern Skies Cricket Development Tournament in Brisbane)</i>	200
4-Dec	<i>Elijah Hapi (Under 17 Basketball Team Basketball Pacific Slam in Sydney)</i>	200
4-Dec	<i>Uriah Solheim (Under 17 Basketball Team Basketball Pacific Slam in Sydney)</i>	200
	<i>Marseille Lucas (Support for her student exchange to Germany)</i>	500
	Youth Development Fund Balance - Available for allocation	1,300
	Emergency Response Fund (Transferred to 461/207/4/2/2)	4,000
	Parklands Bowling Club (Fencing project)	5,000
	Christchurch Garden City Trust (planter boxes New Brighton Mall)	7,580
	Hap Hill Memorial Plaque (Bexley Wetlands)	395
23-Dec	Shirley Methodist Playgroup (New Fencing)	1,600
23-Dec	Puddleducks Toy Library (Shelving and Storage)	930
	2009 Ellerslie International Flower Show (23 tickets)	506
	TOTAL: Burwood/Pegasus Discretionary Response Fund Unallocated	33,989

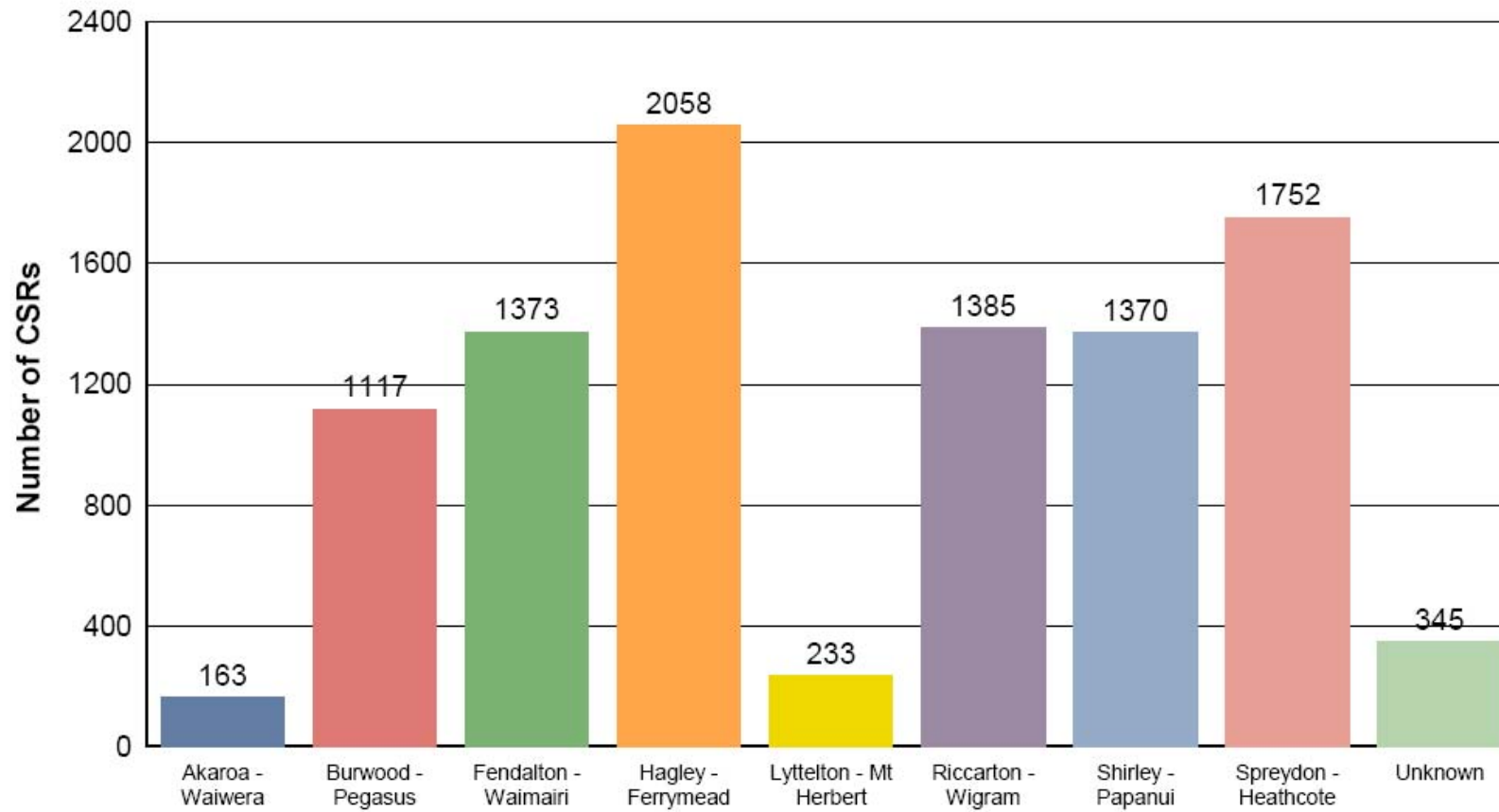
**Streets Maintenance CSR Calls Received By Community Board
from 1 Dec 2008 to 31 Jan 2009**

As at 2 Feb 2009 15:48

Click on a bar to drill down to Call Types for that Community Board



Number of CSRs



STREET MAINTENANCE CSR RECEIVED BY COMMUNITY BOARD FROM 1 DECEMBER 2008 TO 31 JANUARY 2009

Call Types	Bur / Peg	Fen / Wai	Hag / Fer	Ric / Wig	Spr / Hea	Shr / Pap	Aka / Wai	Lyt / MtH	Unknown	Totals
GRA Graffiti	176	233	288	132	218	230	0	8	17	1,302
PAG Parks General	8	1	4	3	3	6	0	2	1	28
PAM Parks Maintenance	248	210	292	243	237	191	22	28	87	1,558
PKE Parking Enforcement	40	27	39	31	38	58	2	4	5	244
SER Sewer Reactive Maintenance	16	11	50	23	51	30	6	18	1	206
SET Treatment Plant	4	0	4	0	0	0	0	0	0	8
STA Road Markings	3	21	7	11	8	10	4	1	4	69
STB Bus Stops and Bus Shelters	13	9	7	4	1	3	0	0	6	43
STE Street Cleaning / Sweeping	100	118	283	153	212	134	11	21	43	1,073
STF Footpaths	40	52	110	71	87	62	2	5	2	431
STL Street Lights	15	16	27	27	26	17	2	2	3	135
STM Street Maintenance	55	68	146	131	108	69	33	32	29	670
STQ Traffic Engineer Community Enq	13	16	37	16	28	20	1	7	6	144
STS Street Signs	46	92	94	87	90	67	9	10	33	529
STW Pavement Weed Control	7	1	7	5	2	2	0	0	0	24
STX Street Grass Maintenance	44	26	26	38	26	39	8	5	6	218
STY Street Shrubs Maintenance	25	29	54	29	42	24	0	6	17	226
TSA Park Trees	28	28	45	37	50	53	2	3	15	261
TSS Street Trees	78	169	144	85	88	111	6	14	41	736
WAQ Water Quality	5	7	5	3	5	5	1	3	0	34
WAR Water Reactive Maintenance	135	205	345	225	375	188	48	61	13	1,595
WWE Waterways Environmental Asset	8	21	12	16	18	25	1	1	7	109
WWG Waterways General	3	0	14	11	23	12	3	1	0	67
WWU Waterways Utilities	5	9	15	13	15	14	3	1	7	82
Totals:	1,117	1,368	2,056	1,393	1,749	1,370	163	233	343	9,792