



Christchurch City Council

**FENDALTON/WAIMAIRI COMMUNITY BOARD
AGENDA**

WEDNESDAY 3 SEPTEMBER 2008

**DIRECTLY AFTER THE COMMUNITY SERVICES COMMITTEE
MEETING AT 8.00AM**

**IN THE BOARDROOM
FENDALTON SERVICE CENTRE
CORNER JEFFREYS AND CLYDE ROADS**

Community Board: Val Carter (Chairperson), Cheryl Colley (Deputy Chairperson), Sally Buck, Faimeh Burke, Jamie Gough, Mike Wall and Andrew Yoon.

Community Board Adviser
Graham Sutherland
Phone: 941 6728 DDI
Email: graham.sutherland@ccc.govt.nz

**PART A - MATTERS REQUIRING A COUNCIL DECISION
PART B - REPORTS FOR INFORMATION
PART C - DELEGATED DECISIONS**

INDEX	PG NO		
PART C	2	1.	APOLOGIES
PART C	2	2.	CONFIRMATION OF MINUTES – BOARD MEETING OF 19 AUGUST 2008
PART B	15	3.	DEPUTATIONS BY APPOINTMENT
PART B	15	4.	PRESENTATION OF PETITIONS
PART B	15	5.	NOTICES OF MOTION
PART B	15	6.	CORRESPONDENCE
PART B	15	7.	BRIEFINGS
PART B	15	8.	COMMUNITY BOARD ADVISER’S UPDATE
PART B	15	9.	ELECTED MEMBERS INFORMATION EXCHANGE
PART B	15	10.	QUESTIONS UNDER STANDING ORDERS

3. 9. 2008

- 2 -

1. APOLOGIES

2. CONFIRMATION OF MINUTES – BOARD MEETING OF 19 AUGUST 2008

The minutes of the Board's ordinary meeting of 19 August 2008 are **attached**.

CHAIRPERSON'S OR STAFF RECOMMENDATION

That the minutes of the Board's ordinary meeting be confirmed.

**FENDALTON/WAIMAIRI COMMUNITY BOARD
19 AUGUST 2008**

**Minutes of a meeting of the Fendalton/Waimairi Community Board
held on Tuesday 19 August 2008 at 4.00pm
in the Boardroom, Fendalton Service Centre**

PRESENT: Val Carter (Chairperson), Sally Buck, Cheryl Colley, Jamie Gough, Mike Wall and Andrew Yoon.

APOLOGIES: An apology for absence was received and accepted from Faimeh Burke.

The Board reports that:

PART B - REPORTS FOR INFORMATION

1. BURNSIDE HIGH SCHOOL AND CHRIST THE KING SCHOOL – VARIABLE SPEED LIMITS

1. The Board considered a “Part A – Matters Requiring a Council Decision” report requesting that the Board recommend that Council approve the installation of new variable speed limits (40 kilometre per hour school zones) on Memorial Avenue and Greers Road and include them in the Christchurch City Speed Limits Register. This report was first considered by the Fendalton/Waimairi Community Board’s Works, Traffic and Environment Committee at its meeting on 28 July 2008.
2. As staff considered it beneficial that this matter be considered by Council promptly, the Board’s recommendation has been forwarded to Council by way of a Chairperson’s report. This would be considered by the Council at its meeting on 11 September 2008.

2. DEPUTATIONS BY APPOINTMENT

2.1 MARK CHEN – CUTTS ROAD PROPOSED P10 PARKING RESTRICTION

Mr David Griffin, a resident of the Cutts Road area, spoke on behalf of Mr Mark Chen, proprietor of the Fish and Chips shop on Cutts Road. Mr Chen is in opposition to having a P10 parking restriction outside his business premises and requested that the Board reconsider the matter in favour of a P30 parking restriction. Mr Chen was also in attendance and answered questions from the Board members.

The decision regarding this matter is detailed under clause 15.1 of this report.

2.2 MIKE MORA – HARAKEKE STREET TRAFFIC ISLAND

Mr Mike Mora, Riccarton/Wigram Community Board member, spoke to the Board in opposition to the proposed removal of a traffic island in Harakeke Street. It is proposed that the traffic island be removed due to the inability of charter buses to safely make the turn from Rochdale Street into Harakeke Street.

The Riccarton/Wigram Community Board members are concerned that the local residents’ preference to retain the traffic island is being ignored for the requirements of the relatively short-term residents of the Adams House hostel who require bus transportation at various times throughout the year.

2. Cont'd

This matter was included on the Board agenda under the report of the 28 July 2008 Works, Traffic and Environment Committee (Item 13) and the Board agreed to bring consideration of the matter forward.

The Board **decided** to request that staff undertake consultation on this matter, focusing on those residents who will most likely be affected (residents in Harakeke Street (north of Matai Street), Rochdale Street and Daresbury Lane) and following consultation that a report be presented to the November 2008 Works, Traffic and Environment Committee meeting.

3. PRESENTATION OF PETITIONS

Nil.

4. NOTICES OF MOTION

Nil.

5. CORRESPONDENCE

Nil.

6. BRIEFINGS

Nil.

7. COMMUNITY BOARD ADVISER'S UPDATE

The Board **received** an update from the Community Board Adviser on forthcoming Board-related activity over the coming weeks and on the Customer Services Report for July 2008, and noted the following matters in particular:

- **Memorial Avenue Welcome Sign**

The Board requested that staff investigate the issue of the upgrade of the "Welcome to Christchurch" sign at the start of Memorial Avenue. This matter had earlier been raised by the Christchurch International Airport Limited.

- **Ward Area Tour**

The Board requested that staff organise a tour of the ward for Board members, to include a site visit to the public toilets in Bishopdale Mall to view the planned upgrade of these facilities and to view other recent projects.

- **Fendalton Art Work Working Party Meeting**

A meeting date of 5 September 2008 at 4.00pm was proposed for the Fendalton Art Work Working Party.

8. ELECTED MEMBERS' INFORMATION EXCHANGE

Members took this opportunity to share information regarding matters of interest.

9. QUESTIONS UNDER STANDING ORDERS

Nil.

PART C - REPORT ON DELEGATED DECISIONS TAKEN BY THE BOARD

10. CONFIRMATION OF MEETING MINUTES – BOARD MEETING OF 28 JULY 2008

The Board **resolved** that the minutes of its ordinary meeting of 28 July 2008, be confirmed.

11. NEW STANDING ORDERS

The Board considered a report seeking a decision as to whether a Chair's casting vote would be used in meetings of the Fendalton/Waimairi Community Board in regards to the new Standing Orders adopted by the Christchurch City Council on 24 July 2008.

The Board **resolved** that the chairperson or other persons presiding over meetings of the Fendalton/Waimairi Community Board and/or its committee and subcommittee meetings, shall not have a casting vote in the case of an equality of votes.

12. APPLICATION TO THE BOARD'S YOUTH DEVELOPMENT SCHEME – ASHLEIGH AND MICHAELA SMITH

The Board's approval was sought for an application for funding from the Community Board's 2008/09 Youth Development Scheme for Ashleigh and Michaela Smith.

The Board **resolved** to allocate \$500 to Ashleigh and Michaela Smith (\$250 each) from the 2008/09 Youth Development Scheme to compete in the New Zealand High Schools Hockey Tournament.

13. APPLICATION TO THE BOARD'S YOUTH DEVELOPMENT SCHEME – TARA MOORE

The Board's approval was sought for an application for funding from the Board's 2008/2009 Youth Development Scheme for Tara Moore.

The Board **resolved** to allocate \$300 from the 2008/09 Youth Development Scheme to Tara Moore to compete in the Oceania Karate Championships.

14. APPLICATION TO THE BOARD'S YOUTH DEVELOPMENT SCHEME – HANNAH BAYARD

The Board's approval was sought for an application for funding from the Board's 2008/2009 Youth Development Scheme from Hannah Bayard.

The Board **resolved** to allocate \$400 from the 2008/09 Youth Development Scheme to Hannah Bayard to compete in the Commonwealth World Youth Games in India.

15. WORKS, TRAFFIC AND ENVIRONMENT COMMITTEE – MINUTES OF 28 JULY 2008

The Board considered the minutes of its Works, Traffic and Environment Committee meeting of 28 July 2008 and **resolved**:

15.1 Cutts Road – Proposed P10 Parking Restriction

- (a) That this matter lie on the table until staff facilitate a meeting between the two business owners advising them of the options and the Board's preference for the parties involved to reach an agreement on how to proceed; and
- (b) That staff report back to the September 2008 Works, Traffic and Environment Committee meeting on the outcome.

(Andrew Yoon declared an interest in this matter and took no part in the discussion or voting therein.)

15.2 Straven Road – Bus Stops

- (a) That the existing bus stop on the east side of Straven Road commencing at a point 38 metres from its intersection with Rochdale Street and extending for a distance of 12 metres in a northerly direction be revoked.
- (b) That the existing bus stop on the west side of Straven Road commencing at a point 33 metres from its intersection with Rochdale Street and extending for a distance of 12 metres in a northerly direction be revoked.
- (c) That a bus stop be created on the east side of Straven Road commencing at a point 38 metres from its intersection with Rochdale Street and extending for a distance of 18 metres in a northerly direction.
- (d) That a bus stop be created on the west side of Straven Road commencing at a point 24 metres from its intersection with Rochdale Street and extending for a distance of 18 metres in a northerly direction.

16. CONSIDERATION OF SUPPLEMENTARY ITEM

The Board's approval was sought to submit a supplementary report for consideration at this meeting regarding a funding application to the Board's 2008/09 Youth Development Scheme. The reason, in terms of section 46a(vii) of the Local Government Official Information and Meetings Act 1987, why the report was not included on the main agenda is because the applicant was only notified of his selection after the agenda deadline had closed and that the applicant travels away before the next Community Board meeting. A retrospective application cannot be considered.

The Board **resolved** to accept the supplementary report (Item 17 below), as detailed above.

17. APPLICATION TO THE BOARD'S YOUTH DEVELOPMENT SCHEME – ZARIF TURKMANI

The Board's approval was sought for an application for funding from the Board's 2008/2009 Youth Development Scheme from Zarif Turkmani.

The Board **resolved** to allocate \$300 from the 2008/2009 Youth Development Scheme to Zarif Turkmani to compete in the New Zealand Secondary Schools Premier Football Tournament.

The meeting concluded at 5.30pm.

CONFIRMED THIS 3RD DAY OF SEPTEMBER 2008

**VAL CARTER
CHAIRPERSON**

3. 9. 2008

- 7 -

ATTACHMENT TO CLAUSE 2

11. 9. 2008

**REPORT BY THE CHAIRPERSON OF THE
FENDALTON/WAIMAIRI COMMUNITY BOARD
19 AUGUST 2008**

PART A – MATTERS REQUIRING A COUNCIL DECISION

1. BURNSIDE HIGH SCHOOL AND CHRIST THE KING SCHOOL – VARIABLE SPEED LIMITS

General Manager responsible:	General Manager City Environment, DDI 941-8608
Officer responsible:	Transport and Greenspace Manager
Author:	Michael Thomson, Senior Traffic Engineer, Community

PURPOSE OF REPORT

1. The purpose of this report is to request that the Council approve the installation of new variable speed limits (40 kilometre per hour school zones) on Memorial Avenue and Greers Road and include them in the Christchurch City Speed Limits Register. This report was first considered by the Fendalton/Waimairi Community Board's Works, Traffic and Environment Committee at its meeting on 28 July 2008.

EXECUTIVE SUMMARY

2. The Council has a programme of installing 40 kilometre per hour variable speed limits (known as "school zones") outside schools according to a prioritisation process. To date 27 schools have benefited from this treatment. The "school zone" will operate on school days, for no more than forty-five minutes in the morning at a time between 8am and 9am and for no more than thirty minutes in the afternoon at a time between 2.30pm and 3.30pm.
3. Now that the Council has formalised the Christchurch City Council Speed Limits Bylaw 2005, it can resolve to make these new variable speed limits. Accordingly infrastructure for these variable speed limits cannot be commissioned until they have been formally resolved by the Council.

FINANCIAL IMPLICATIONS

4. The estimated cost for this school zone is \$80,000.
5. The recommendations of this report align with 2006-16 Long Term Council Community Plan (LTCCP) budgets.

LEGAL CONSIDERATIONS

6. The proposed variable speed limit complies with the conditions specified and published by the Director of Land Transport New Zealand in the *New Zealand Gazette* (2/6/2005, No. 86, p. 2051) approving a variable speed limit of 40 kilometre per hour in school zones and setting out conditions for those speed limits. A copy of that notice is attached (**Attachment 2**). Council resolution is required to implement the speed limit restrictions and traffic management changes.

ALIGNMENT WITH LTCCP AND ACTIVITY MANAGEMENT PLANS

7. This report's recommendations support the project objectives as outlined in the 2006-16 LTCCP.
8. This project aligns with the Transport and Greenspace Unit's "Our Community Plan 2006-2016".

1. Cont'd

ALIGNMENT WITH STRATEGIES

9. This project is consistent with key Council strategies including the Road Safety Strategy and the Pedestrian Strategy.

CONSULTATION FULFILMENT

10. Both the Burnside High School and the Christ the King School Boards of Trustees have been informed of the proposed variable speed limits and have expressed support for the installation of variable speed limits at their school. Information newsletters will be made available to all the families of children attending the schools. Property owners and residents will receive a newsletter about the signage to be installed outside their properties. The residents of these properties will also be visited, and the property owners and occupiers given a minimum of 14 days to make submissions about the sign locations.
11. Before the Council can set a variable speed limit pursuant to Clause 5(1) of the Christchurch City Speed Limits Bylaw 2005, the public consultation requirements set out in Section 7.1 of the Land Transport Rule Setting of Speed Limits 2003 Rule 54001 must be complied with. Section 7.1(2) provides that the persons that must be consulted before the Council sets a speed limit are:
- (a) road controlling authorities that are responsible for roads that join, or are near, the road on which the speed limit is to be set or changed; and
 - (b) a territorial authority that is affected by the existing or proposed speed limit; and
 - (c) any local community that the road controlling authority considers to be affected by the proposed speed limit; and
 - (d) the Commissioner of Police, and
 - (e) the Chief Executive Officer of the New Zealand Automobile Association Incorporated, and
 - (f) the Chief Executive Officer of the Road Transport Forum New Zealand; and
 - (g) other organisations or road user groups that the road controlling authority considers to be affected by the proposed speed limit; and
 - (h) The Director of Land Transport New Zealand.
12. Section 7.1(3) of the Rule provides:
A road controlling authority must consult by writing to the persons in 7.1(2) advising them of the proposed speed limit and giving them a reasonable time, which must be specified in the letter, to make submissions on the proposal. In terms of Section 7.1(2)(a) and 7.1(2)(b) there are no road controlling authorities or territorial authorities that are required to be consulted in respect of any of the proposed variable speed limits.
13. The representatives of the Commissioner of Police, the Director of Land Transport New Zealand, the Chief Executive Officer of the New Zealand Automobile Association Incorporated, the Secretary of the Taxi Federation and the Chief Executive Officer of the Road Transport Forum of New Zealand have received written advice of the proposed new variable speed limit in accordance with Section 7.1(2) (d), (e), (f) and (h). No other organisation or road user group is considered affected by the proposed speed limits. No neighbouring road controlling authority is affected. Support for the proposed variable speed limits has been received in writing from the New Zealand Police and from Land Transport New Zealand.

1. Cont'd

STAFF RECOMMENDATIONS

That the Council approve:

- (a) The installation of variable speed limits on Memorial Avenue and Greers Road (school zone), subject to a satisfactory outcome of any issues raised by Land Transport New Zealand and/or the community during consultation undertaken by the Council in respect of the proposals to set the new variable speed limits of 40 km/h specified below, as meets the requirements of Section 7.1 of the Land Transport Setting of Speed Limits Rule 2003.
- (b) That pursuant to Clause 5(1) of the Christchurch City Speed Limits Bylaw 2005, a variable speed limit of 40 kilometres per hour apply on:
 - (i) Memorial Avenue, commencing at a point 25 metres south easterly of the Grahams Road intersection and extending in a south-easterly direction for a distance of 524 metres; and
 - (ii) Greers Road, commencing at a point 54 metres north easterly of Westburn Terrace and extending in a north-easterly direction for a distance of 446 metres.
- (c) That the abovementioned variable speed limits shall come into force on the date of adoption of the Council's resolution.

WORKS, TRAFFIC AND ENVIRONMENT COMMITTEE RECOMMENDATION

That the staff recommendations be adopted.

BOARD RECOMMENDATION

That the staff recommendations be adopted.

THE OPTIONS

14. There are two options; the preferred option is to install a temporary 40 kilometre per hour speed limit using electronic and static signage that operates during the daily opening and closing periods of Burnside High School. The other option is to do nothing.

ASSESSMENT OF OPTIONS**The Preferred Option**

15. Using the School Zone prioritisation criteria, Burnside High School and Christ the King School rank first in the present school prioritisation.

	Benefits (current and future)	Costs (current and future)
Social	Improved pedestrian safety for school children.	Nil.
Cultural	Nil.	Nil.
Environmental	Nil.	Additional roadside signage.
Economic	Nil	Capital expenditure and maintenance.
<p>Extent to which community outcomes are achieved:</p> <p>Primary alignment with community outcome <i>“Our City provides a choice of housing, easy mobility and access to open spaces, and a range of utilities that allow people to enjoy an acceptable quality of life”</i> by providing a safe transportation network.</p> <p>Impact on the Council’s capacity and responsibilities:</p> <p>No impact.</p> <p>Effects on Maori:</p> <p>It is considered that there are no effects on Maori.</p> <p>Consistency with existing Council policies:</p> <p>Consistent with the Road Safety Strategy particularly in respect to designing and managing roads with appropriate speed environments and providing safe facilities for pedestrians.</p> <p>Views and preferences of persons affected or likely to have an interest:</p> <p>All affected parties have been contacted and all responses indicated support of the proposal.</p> <p>Other relevant matters:</p> <p>Nil.</p>		

1. Cont'd

Maintain the Status Quo.

16. Maintaining the status quo or doing nothing will achieve nothing for the community. Burnside High School has requested that something be done to improve the safety of their students on this section of Memorial Avenue when school children are crossing the road. To do nothing will maintain a possibly hazardous situation.

	Benefits (current and future)	Costs (current and future)
Social	Nil	Potential for pedestrian crossing crashes with time.
Cultural	Nil	Nil
Environmental	Nil	Nil
Economic	No capital expenditure or ongoing maintenance costs.	Nil
<p>Extent to which community outcomes are achieved:</p> <p>Maintaining the status quo is not aligned to any Community Outcomes.</p> <p>Impact on Council's capacity and responsibilities:</p> <p>No impact.</p> <p>Effects on Maori:</p> <p>It is considered that there are no effects on Maori.</p> <p>Consistency with existing Council policies:</p> <p>Maintaining the status quo is not consistent with the Road Safety Strategy or the CCC Financial Plan and Programme 2004 and conflicts with the objectives of the asset management plan.</p> <p>Views and preferences of persons affected or likely to have an interest:</p> <p>Given that feedback in support was received for the option distributed for public consultation it is considered that there is some support for not maintaining the status quo.</p> <p>Other relevant matters:</p> <p>Nil.</p>		

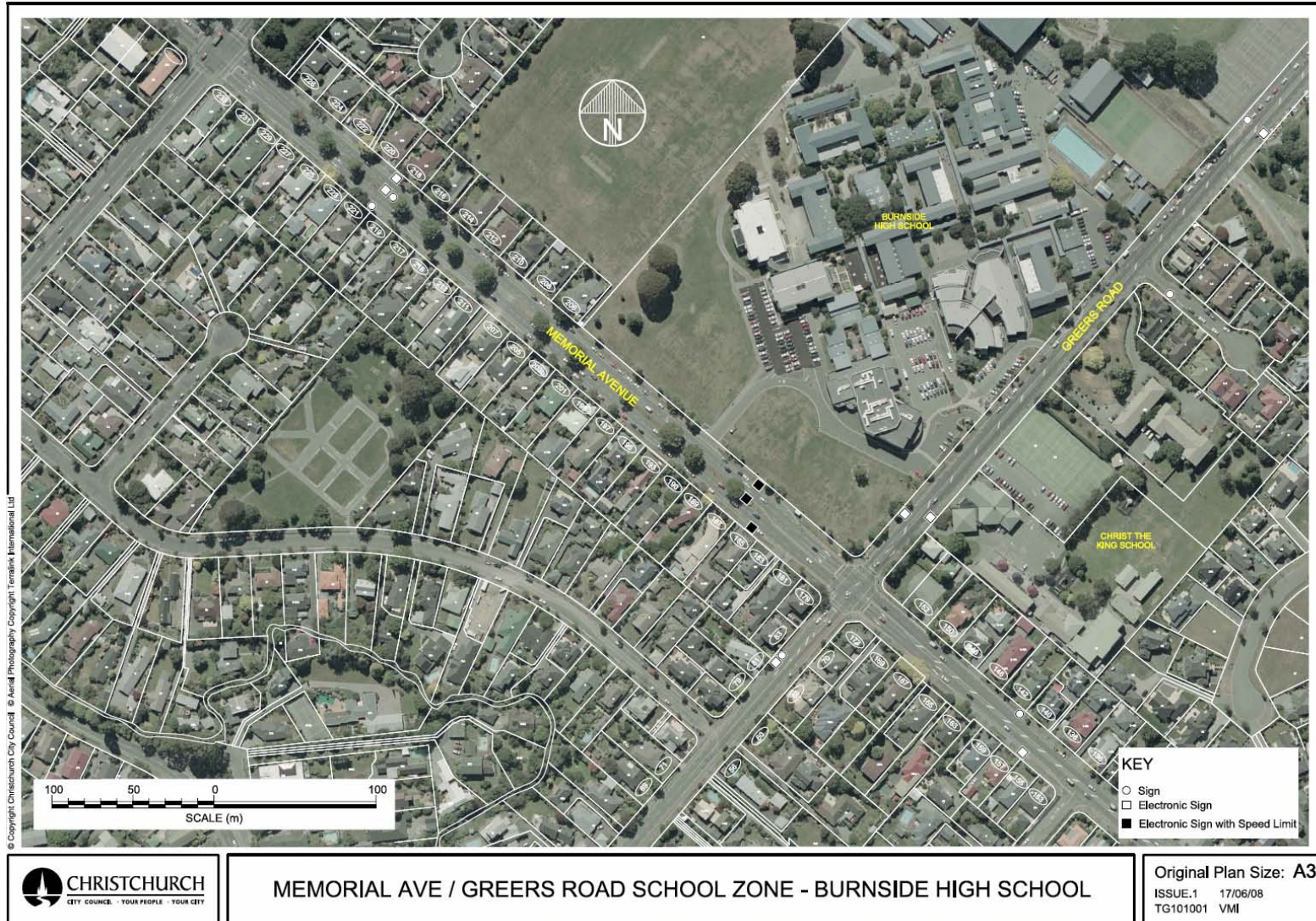
**VAL CARTER
CHAIRPERSON**

11. 9. 2008

Fendalton/Waimairi Community Board 19. 8. 2008

- 12 -

ATTACHMENT 1 TO CLAUSE 1



New Zealand Gazette – Te Kahiti o Aotearoa

Notice Number: 3459

Year: 2005

Publication Date: 02 June 2005

Date:

Page Number: 2051

Title: Variable Speed Limit in School Zones

Notice Text: Variable Speed Limit in School Zones

Pursuant to clause 6.1 of Land Transport Rule: Setting of Speed Limits 2003 and a delegation from the Director of Land Transport, I, Peter Graeme Croft, Manager Safer Roads, approve variable speed limits in school zones in accordance with the conditions set out in this notice.

CONDITIONS

1. Variable Speed Limit

A road controlling authority may set a speed limit of 40 km/h that operates in a school zone during the periods specified in condition 2 of this notice. At all other times, the speed limit is the permanent speed limit for the road.

2. Periods of Operation

The 40 km/h speed limit may operate on school days for a maximum period of:

- (a) 35 minutes before the start of school until the start of school;
- (b) 20 minutes at the end of school, beginning no earlier than 5 minutes before the end of school;
- (c) 10 minutes at any other time when at least 50 children cross the road or enter or leave vehicles at the roadside.

3. Signs

Signs that comply with Land Transport Rule: Traffic Control Devices 2004 must be installed to mark the beginning and end of the variable speed limit in the school zone as follows:

- (a) At least one R1-6 "School zone variable" sign at each end of the variable speed limit on the main road outside the school, facing road users travelling towards the variable speed limit; and
- (b) at least one R1-6 "School zone variable" sign or R1-6.1 "School zone fixed" sign facing road users travelling towards the variable speed limit on each side road that intersects with the school zone, where that side road is a no exit road or is controlled by Give-way or Stop signs at the intersection with the school zone; and
- (c) at least one R1-7 "School zone ends" sign at each end of the variable speed limit on every road, facing road users leaving the variable speed limit.

4. Length of Variable Speed Limit

A variable speed limit in a school zone must be a minimum length of 300 metres but should not be longer than 500 metres. The length of variable speed limit on side roads that intersect with the school zone may be shorter than 300 metres.

5. Warrant

A road controlling authority may only set a variable speed limit in a school zone under the following conditions:

- (a) There is a high level of school-related activity on the road outside the school, with at least 50 children crossing the road or entering or leaving vehicles at the roadside; and
- (b) the traffic on the road outside the school meets at least one of the following conditions:
 - (i) The mean speed of free-running vehicles is greater than 45 km/h; or
 - (ii) the 85th percentile speed of free-running vehicles is greater than 50 km/h; or
 - (iii) there have been speed related crashes in the previous five years; or
 - (iv) the school-related activity in condition 5 (a) occurs on a main traffic route.

6. Bylaw

A road controlling authority must set a variable speed limit in a school zone by making a bylaw in accordance with Land Transport Rule: Setting of Speed Limits 2003.

REVOCATION

The notice dated the 26th day of June 2002, published in the New Zealand Gazette, 4 July 2002, No. 76, page 2029, relating to school zone signs is hereby revoked.

DEFINITION

School zone means a length of road outside a pre-school, primary school, intermediate school or secondary school.

Dated at Wellington this 31st day of May 2005.

PETER GRAEME CROFT, Manager Safer Roads.

3. DEPUTATIONS BY APPOINTMENT

Nil.

4. PRESENTATION OF PETITIONS

Nil.

5. NOTICES OF MOTION

Nil.

6. CORRESPONDENCE

Nil

7. BRIEFINGS

Nil.

8. COMMUNITY BOARD ADVISER'S UPDATE

Verbal update.

9. ELECTED MEMBERS INFORMATION EXCHANGE

10. QUESTIONS UNDER STANDING ORDERS