



**Christchurch City Council**

**SPREYDON/HEATHCOTE COMMUNITY BOARD**

**AGENDA**

**TUESDAY 17 JUNE 2008**

**AT 4.30PM**

**AT BECKENHAM SERVICE CENTRE**

**IN THE BOARDROOM,  
66 COLOMBO STREET, CHRISTCHURCH**

**Community Board:** Phil Clearwater (Chairperson), Oscar Alpers, Barry Corbett, Chris Mene, Karolin Potter, Tim Scandrett and Sue Wells

**Community Board Adviser**

Jenny Hughey

Telephone: 941-5108

Email: [jenny.hughey@ccc.govt.nz](mailto:jenny.hughey@ccc.govt.nz)

**PART A - MATTERS REQUIRING A COUNCIL DECISION**

**PART B - REPORTS FOR INFORMATION**

**PART C - DELEGATED DECISIONS**

**INDEX**

	<b>PAGE NO</b>	<b>CLAUSE</b>	
<b>PART C</b>	<b>3</b>	<b>1.</b>	<b>APOLOGIES</b>
<b>PART C</b>	<b>3.</b>	<b>2.</b>	<b>CONFIRMATION OF MEETING REPORTS – 30 MAY AND 6 JUNE 2008</b>
<b>PART B</b>	<b>3</b>	<b>3.</b>	<b>DEPUTATIONS BY APPOINTMENT</b>
<b>PART B</b>	<b>3</b>	<b>4.</b>	<b>PETITIONS</b>
<b>PART B</b>	<b>3</b>	<b>5.</b>	<b>NOTICE OF MOTIONS</b>
<b>PART B</b>	<b>3.</b>	<b>6.</b>	<b>CORRESPONDENCE</b>

**We're on the Web!**

[www.ccc.govt.nz/Council/Agendas/](http://www.ccc.govt.nz/Council/Agendas/)

PART B	3.	7.	<b>BRIEFINGS</b> <b>7.1 Belinda Barrett-Walker, Junior Neighbourhood Support</b> <b>7.2 Peter Mitchell, General Manager Regulation and Democracy Services</b>
PART C	7	8.	<b>CASHMERE STREAM GREEN CORRIDOR LANDSCAPE ENHANCEMENT</b>
PART A	24	9.	<b>SIGN OF THE TAKAHE – LEASE</b>
PART C	26	10.	<b>KEEP NEW ZEALAND BEAUTIFUL CONFERENCE</b>
PART C	30	11.	<b>SPREYDON/HEATHCOTE COMMUNITY BOARD’S DISCRETIONARY FUND 2007/08 – PROPOSED ALLOCATION FOR MOBILE CAMERA AND RECORDING EQUIPMENT</b>
PART B	32	12.	<b>COMMUNITY BOARD ADVISERS REPORT</b>
PART B	32	13.	<b>BOARD MEMBERS INFORMATION EXCHANGE</b>
PART B	32	14.	<b>MEMBERS QUESTIONS</b>
PART C	32	15.	<b>RESOLUTION TO EXCLUDE THE PUBLIC</b>

**1. APOLOGIES**

**2. CONFIRMATION OF MEETING REPORTS – 30 MAY AND 6 JUNE 2008**

The reports of the Board's extraordinary meeting of Friday 30 May and the Board's ordinary meeting of Friday 6 June 2008 are attached.

**STAFF RECOMMENDATION**

That the reports of the Board's meetings of 30 May and 6 June 2008 be confirmed.

**3. DEPUTATIONS BY APPOINTMENT**

**4. PETITIONS**

**5. NOTICE OF MOTION**

**6. CORRESPONDENCE**

**7. BRIEFINGS**

**7.1 Belinda Barrett-Walker, Junior Neighbourhood Support**

Work in local schools.

**7.2 Peter Mitchell, General Manager, Regulation and Democracy Services**

Memorandum of 20 March 2008 re Submission to Remuneration Authority/Role of Council appointees to Community Board.

10. 7. 2008

**SPREYDON/HEATHCOTE COMMUNITY BOARD  
30 MAY 2008**

**An extraordinary meeting of the Spreydon/Heathcote Community Board  
was held on 30 May 2008 at 8.10am**

**PRESENT:** Phil Clearwater (Chairperson), Oscar Alpers, Barry Corbett, Chris Mene, Karolin Potter and Tim Scandrett

**APOLOGIES:** An apology for absence was received and accepted from Sue Wells

The Board reports that:

**PART B – REPORTS FOR INFORMATION**

**1. KEY LOCAL ORGANISATIONS FOR SPREYDON/HEATHCOTE, STRENGTHENING COMMUNITIES FUND**

The Board considered a report containing all Spreydon/Heathcote Strengthening Communities Funding applications and seeking recommendations to the Metropolitan Funding Sub-committee regarding Key Local Organisations (KLOs) from its ward to be considered for Metropolitan Strengthening Communities Funding which arose out of the request the Board made at its 20 May 2008 meeting for additional information in order to consider this report.

The Board **decided** to accept the staff recommendation regarding Key Local Organisations provided the amount for allocation to the Rowley Resource Centre is increased to \$20,000.

This matter has been dealt with by way of report to the Metropolitan Funding Sub-Committee meeting of 11 July 2008.

The meeting concluded at 8.50am

**CONSIDERED THIS 17<sup>TH</sup> DAY OF JUNE 2008**

**PHIL CLEARWATER  
CHAIRPERSON**

10. 7. 2008

**SPREYDON/HEATHCOTE COMMUNITY BOARD  
6 JUNE 2008**

**A meeting of the Spreydon Heathcote Community Board  
was held on 6 June 2008 at 8.10am**

**PRESENT:**

**PRESENT:**

Phil Clearwater (Chairperson), Oscar Alpers, Barry Corbett, Chris Mene, Karolin Potter and Sue Wells

**APOLOGIES:**

**APOLOGIES:**

An apology for lateness was received and accepted from Tim Scandrett who arrived at 8.28am and was absent for part of clause 1.

The Board reports that:

**PART B - REPORTS FOR INFORMATION**

**1. DEPUTATIONS BY APPOINTMENT**

Nil

**2. PRESENTATION OF PETITIONS**

Nil

**3. NOTICES OF MOTION**

Nil

**4. CORRESPONDENCE**

Nil

**5. BRIEFINGS**

Nil

**6. BOARD MEMBERS INFORMATION EXCHANGE**

Mention was made of the following matters:

- Christchurch Youth Conference Report was noted as being impressive.
- Chair and Deputy Chairperson reported that they have met with the Chairperson of the White Elephant Trust about ways to progress youth engagement in the Community Board area.
- Email reviewed from a resident regarding negativity surrounding Rowley Avenue School and the community.
- Alex Clark made a deputation to the Board earlier in the year regarding Fairfield Avenue, the same presentation was made to the Regulatory and Planning Committee. In relation to this deputation it was noted that the Living Zone 3 and 4 is currently under review and changes are expected to be made to the City Plan by the end of 2008.
- A question was raised about whether or not the Pump House would continue to be available for community use.

**6 Cont'd**

The Board discussed matters arising from the seminar, Sunnyside Memorial Garden and **decided** that prior to the public consultation staff be requested to prepare a report regarding the Sunnyside/Hillmorton Hospital Reserve. The report to include an outline of the process required under the Reserves Act (1977) in relation to public consultation, an explanation of what the Council is attempting to achieve as an outcome in this Reserve Plan and in particular whether or not the Reserve is intended to be an Historic Reserve or a Recreation Reserve.

**7. COMMUNITY BOARD ADVISER'S UPDATE**

The Board **decided** to convene a separate meeting time to hold a workshop to continue reviewing the Board's objectives.

**PART C - REPORT ON DELEGATED DECISIONS TAKEN BY THE BOARD**

**8. CONFIRMATION OF MEETING REPORTS**

The Board **resolved** that the report of its meeting of 9 May 2008 be confirmed.

The Board **resolved** that the report of 20 May 2008 be confirmed subject to the following amendments:

Clause 2 to read "compliments were made about the high quality of the productive values of the Mid Heathcote River/Opawaho Linear Park Masterplan" and Clause 4 to delete the word "the" from the fourth sentence.

**9. APPLICATION FOR FUNDING TO THE YOUTH ACHIEVEMENT SCHEME - HELEN SEARLE**

Funding was sought by Helen Searle, an 18 year old student who lives in the Cashmere area towards costs associated with being a member of the NZ Secondary Students Choir which is attending "Melodia" a South American Choir Festival in Argentina & Brazil.

The Board **resolved** to make a grant of \$500 to Helen Searle from its 2007/08 Youth Achievement Scheme towards costs associated with being a member of the NZ Secondary Students Choir which is attending "Melodia" a South American Choir Festival in Argentina & Brazil..

**10. ADJOURNMENT OF MEETING**

At 8.30am the Board **resolved** that the meeting stand adjourned and the meeting resumed at 9.15am.

The meeting concluded at 9.25am.

**CONSIDERED THIS 17<sup>TH</sup> DAY OF JUNE 2008**

**PHIL CLEARWATER  
CHAIRPERSON**

## 8. CASHMERE STREAM GREEN CORRIDOR LANDSCAPE ENHANCEMENT

<b>General Manager responsible:</b>	General Manager City Environment Group, Jane Parfitt; DDI 941 8608
<b>Officer responsible:</b>	Transport and Greenspace Manager
<b>Author:</b>	Tara Smith – Consultation Leader Greenspace

### PURPOSE OF REPORT

1. The purpose of this report is for the Spreydon/Heathcote Community Board to approve the final landscape plan for the Cashmere Stream Green Corridor Landscape Enhancement project and to proceed to detailed design and construction (**refer to Attachment 1**)

### EXECUTIVE SUMMARY

2. The Cashmere Stream Green Corridor is located on Worsleys Road alongside the new Cracroft subdivision.
3. The project objectives were:
  - (a) That plant species selection was made to help reveal the natural underlying patterns of the indigenous ecosystem. Selection of planting groups/associations to be made and plants placed, according to the function they are required to perform for example screening and habitat.
  - (b) To extend the wildlife corridor already partially established along other reaches of the stream (with possible future walking links). Cashmere stream has high restoration potential.
4. The project team developed a concept plan to meet these objectives which included the following:
  - Riparian planting to enhance water quality, bank stability, habitat, views and the experience of the stream.
  - Shrub and associated groundcover planting - to screen the high and long retaining wall and to create a planted buffer along fence lines between private properties and the reserve. To enhance the entry off Worsley Rd and reduce the visual dominance of the substation.
  - Wide-spaced native specimen tree groups to enhance the experience of open space along the pathway and at Worsley Rd. With visibility to be maintained throughout.
  - Podocarp planting (heritage trees) as forest patches integrated with the detention pond. Also to include wetland planting to provide a more complete representation of likely historic vegetation character along the cashmere stream floodplain i.e. a planted sequence from wetland to riparian to upper bank podocarp, edge shrub species and specimen trees growing in open grass.
5. We are now looking at staging the project over a three year period and the schedule has been updated as per below, this is due to the amount of available funding each financial year:
  - Stage 1 – planting in front of retaining wall, to be complete by winter 2008. The first community planting day is anticipated to happen in late August 2008.
  - Stage 2 – reshaping of the riverbank edges where required and construction of paths, board walk, picnic tables and the interpretation panel 2009/10.
  - Stage 3 – finish any incomplete planting 2010/11.

**8 Cont'd**

**FINANCIAL IMPLICATIONS**

6. The estimated total cost of the project is \$200,000 and will be spent over a 3 year period. The funding from Council is being provided from the Transport and Greenspace Capital Programme:

2007/08	\$60,000	Cashmere Stream Green Corridor
2008/09	\$55,000	Cashmere Stream Green Corridor
2009/10	\$100,000	Cashmere Stream Green Corridor

**Do the Recommendations of this Report Align with 2006-16 LTCCP budgets?**

7. Yes. Funding is provided from within the Transport and Greenspace Capital Programme in the 2006-16 LTCCP.

**LEGAL CONSIDERATIONS**

8. All work will be carried out by a Council approved contractor.

**Have you considered the legal implications of the issue under consideration?**

9. Yes, as per above.

**ALIGNMENT WITH LTCCP AND ACTIVITY MANAGEMENT PLANS**

10. LTCCP 2006-16

- (a) Parks, Open Spaces and Waterways – page 123
- Recreation – By offering a range of active and passive recreation and leisure opportunities.
  - Health – By providing areas for people to engage in healthy activities.
  - Environment – By offering opportunities for people to contribute to projects that improve our city's environment.
- (b) Recreation and Leisure – page 131
- Recreation – By encouraging more people to participate in leisure, physical and sporting activities.
  - Environment – By managing recreation and leisure activities to minimise damage to the environment.

11. Parks and Open Spaces Activity Management Plan.

**Do the recommendations of this report support a level of service or project in the 2006-16 LTCCP?**

12. Yes, as per above.

**ALIGNMENT WITH STRATEGIES**

13. Social Wellbeing.  
Safer Parks Policy.

**Do the recommendations align with the Council's strategies?**

14. Yes, as per above.



## 8 Cont'd

## CONSULTATION FULFILMENT

15. In March 2008 a publicity pamphlet was distributed to approximately 500 residences and key stakeholders (**refer to Attachment 2**). This pamphlet included a summary of the concept, initial concept plans and a feedback form. The project team sought feedback from the community to see whether the proposal was generally supported and to ask them if they would like to participate in a community planting day.
16. The consultation received a 12% response rate (59 responses) and community feedback was generally very positive (**refer to Attachment 3**).
  - 47 submitters (78%) responded "YES – I support the concept plan".
  - 11 submitters (19%) responded "NO – I do not support the concept plan".
  - 2 submitters (3%) neither supported or opposed the proposal.
  - 34 submitters (56%) responded "YES" to participate in a community planting day.
  - 14 submitters (24%) responded "NO" to participate in a community planting day.
17. The key issues identified by submitters relate to:
  - Plantings - 8 comments were made in relation to including more colourful/exotic plants in the plan. There were also 12 comments in relation to the height and positioning of plantings along the green corridor and in front of the retaining wall.
  - Cashmere Stream – 10 comments were made in relation to concern over potential flooding of the reserve.
  - Pathway – 3 comments were made in relation to the placement of the path.
  - Historical link – 3 comments were made in relation to providing a historical link at the site.
18. The issue concerning the inclusion of more colourful/exotic planting in the plan will be resolved by including exotic planting in the plan. We have amended the planting plan to include such tree species as Prunus (Cherry), Liquidambar (Sweetgum), Quercus (Oak) and Taxodium (Swamp Cypress) in the retention pond end of the reserve (**refer to Attachment 1**).
19. The issue concerning the height and positioning of plantings will be partially addressed. We will work with individual residents in relation to any planting in front of the retaining wall to ensure the planting is of the low variety. For those residents with properties on Waiau Street near Cashmere Stream the plantings need to remain suitable to ensure bank stability and to be consistent with the plan objectives which include "plant species selection was made to help reveal the natural underlying patterns of the indigenous ecosystem. Selection of planting groups/associations to be made and plants placed, according to the function they are required to perform for example screening and habitat." And "To extend the wildlife corridor already partially established along other reaches of the stream (with possible future walking links). Cashmere stream has high restoration potential."
20. The issue concerning the potential flooding of Cashmere Stream into the reserve is to be taken into account and will be addressed in the South West Canterbury Integrated Catchment Management Plan. The waterway itself will be maintained in accordance with the contract specifications, to ensure a healthy growth and an adequate water channel.
21. The issue concerning the placement of the pathway through the reserve will be addressed. The plan has been amended and the pathway has been moved further away from the Cashmere Stream side of the reserve (**refer to Attachment 1**).
22. The issue concerning the inclusion of a historical link has been taken into consideration by the inclusion of an interpretation panel in the plan. The interpretation panel will be located by the remains of the Cracroft Wilson Piggery (**see to Attachment 1**).

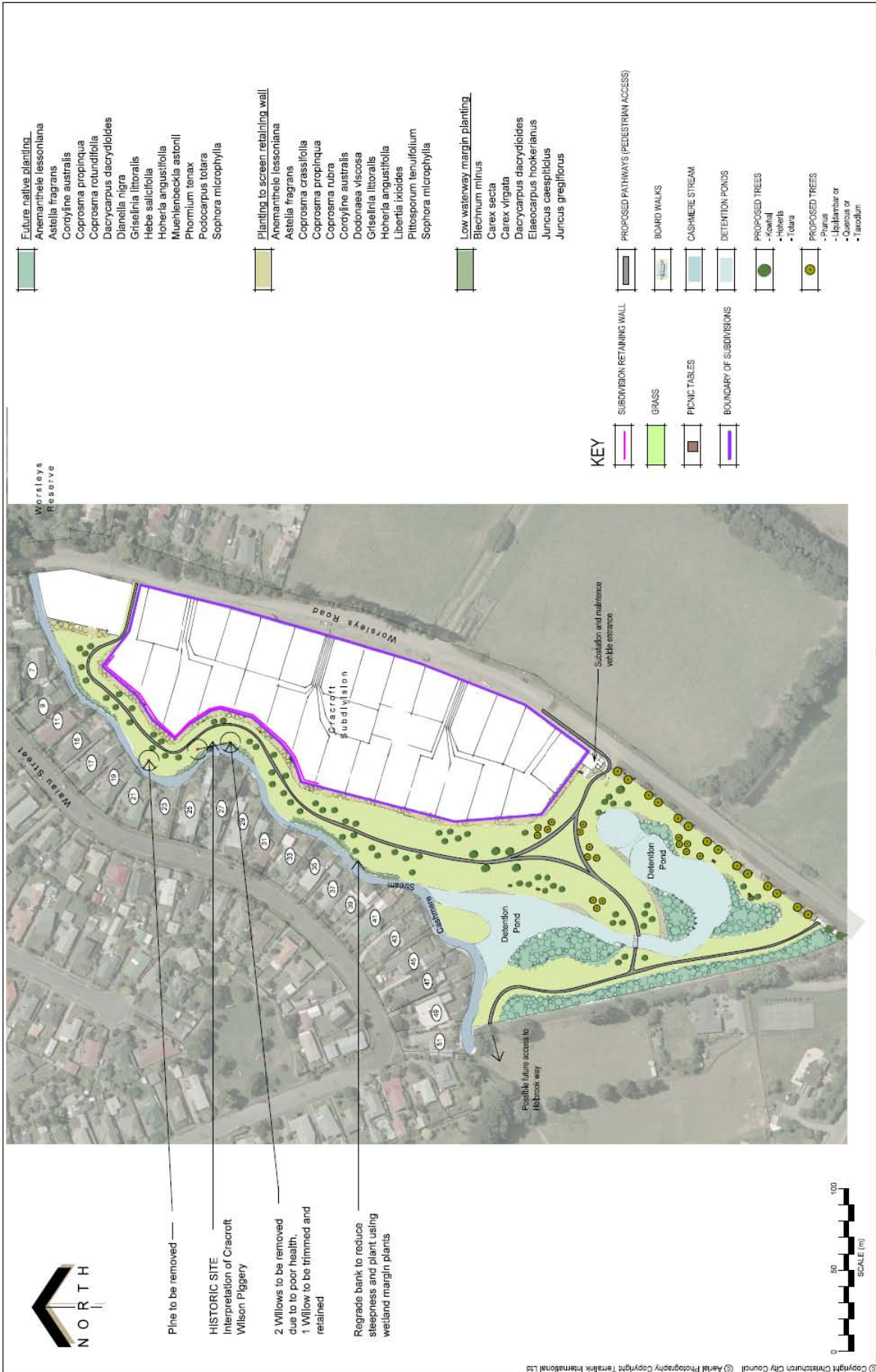
**8 Cont'd**

**STAFF RECOMMENDATION**

It is recommended that the Community Board approve the final landscape plan for Cashmere Stream Green Corridor Landscape Enhancement and proceed to detailed design and construction (**refer to Attachment 1**).

**CHAIRPERSON'S RECOMMENDATION**

That the Staff Recommendation be supported.



- Pine to be removed
- HISTORIC SITE**  
 Interpretation of Cracroft  
 Wilson Piggery
- 2 Willows to be removed due to poor health.  
 1 Willow to be trimmed and retained
- Regrade bank to reduce steepness and plant using wetland margin plants

Original Plan Size: A3  
 LP218302  
 MAY 2008

**FOR BOARD APPROVAL**

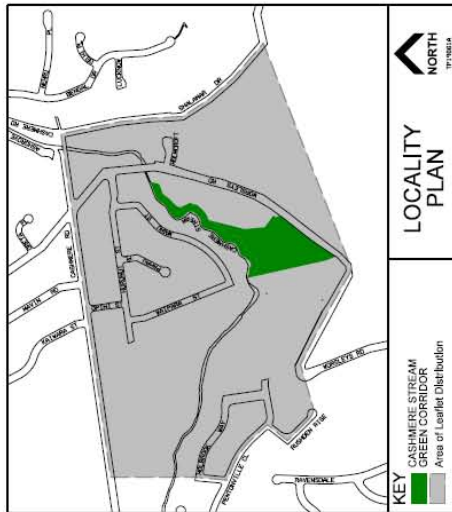
CASHMERE STREAM CORRIDOR AND RESERVES  
 CRACROFT SUBDIVISION AND NEW RESERVE



**Timeline**

Once consultation has been completed and any necessary alterations to the proposed plan finalised, approval will be sought from the Spreydon/Heathcote Community Board to proceed to detailed design and construction.

It is anticipated that construction of this project will be undertaken and completed by the end of October 2009, dependent on contractor availability.



**Please Have Your Say**

Your input will mean that the Cashmere Stream Green Corridor Reserve enhancement project fulfils community aspirations and provides an improved landscape environment for everyone to enjoy.

Comments regarding this proposal are invited from local residents. Please return your submission in the reply paid envelope no later than:

**Friday 18 April 2008**



Tara Smith  
Consultation Leader – Greenspace  
Capital Development Unit  
Christchurch City Council  
Sockburn Service Centre  
PO Box 11 011  
CHRISTCHURCH  
Phone 941 5510 or (027) 209 4325  
Email: Tara.Smith@ccc.govt.nz

Steven Gray  
Capital Project Leader  
Capital Development Unit  
Christchurch City Council  
Civic Offices  
PO Box 237  
CHRISTCHURCH  
Phone 941 8256 or (027) 482 1453  
Email: Steven.Gray@ccc.govt.nz



**HAVE YOUR SAY**

The Council's Capital Development Unit has prepared a concept plan for a proposed landscape enhancement for the new Cashmere Stream Green Corridor Reserve. This reserve will be developed over several years with the staging being:

- Planting along the retaining wall and subdivision boundary to be complete by June 08
- Reshaping of the riverbanks edges where required and construction of paths, boardwalk and installation of picnic tables to commence during December 08 – Feb 09
- Remainder of planting to be complete by October 09

To assist us with the proposed development, the Capital Development Unit would like to determine the views of the local community prior to commencing detailed design and construction. We would appreciate you taking the time to complete the enclosed comment form with any feedback and returning it in the reply paid envelope by **Friday 18 April 2008**.

If you would like any further information or assistance in regard to this project, please do not hesitate to contact either

Tara Smith  
Consultation Leader – Greenspace  
phone 941 5510 or (027) 209 4325

OR

Steven Gray  
Capital Project Leader  
phone 941 8256 or (027) 482 1453.

**Cashmere Stream Green Corridor Landscape Enhancement**

The Transport and Greenspace Unit has funding available in the 2008/09 financial year to do some landscape enhancement work along the Cashmere Stream Green Corridor. The landscape enhancement work will help reveal the natural aspects of the landscape and extend the wildlife corridor that is already partially established.

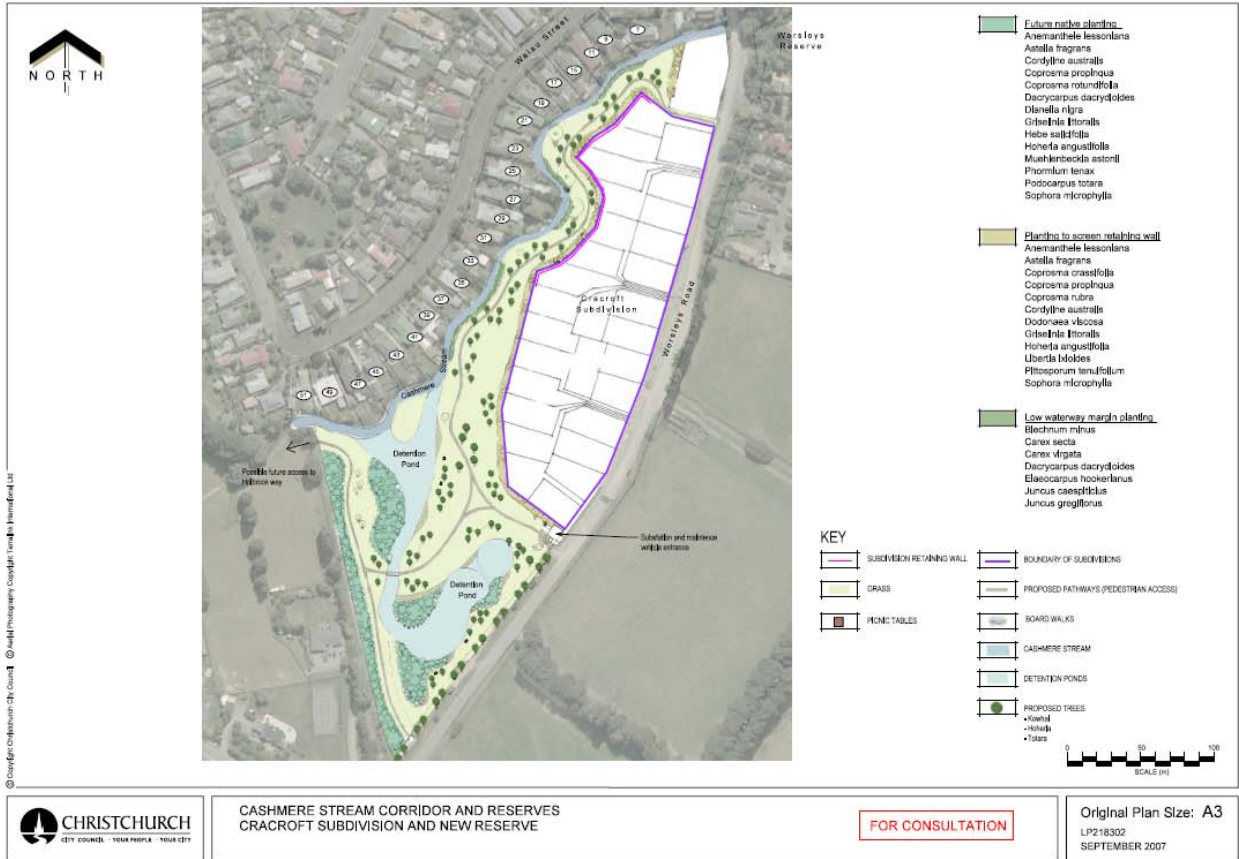


Key features of the proposed plan include:

- Riparian planting to enhance water quality, bank stability, habitat, views and experience of the stream.
- Shrub and associated ground cover planting to screen and enhance the reserve.
- Wide spaced native specimen tree groups to enhance the experience of open space along the pathway and at Worsleys Road.
- Podacarp planting (heritage trees) as forest patches integrated with the detention pond wetland planting.
- Construction of pedestrian pathways and a board walk through the reserve.
- Installation of four picnic tables
- Please note the large area at the south end of the reserve is still under a maintenance agreement with the developer until September 2008

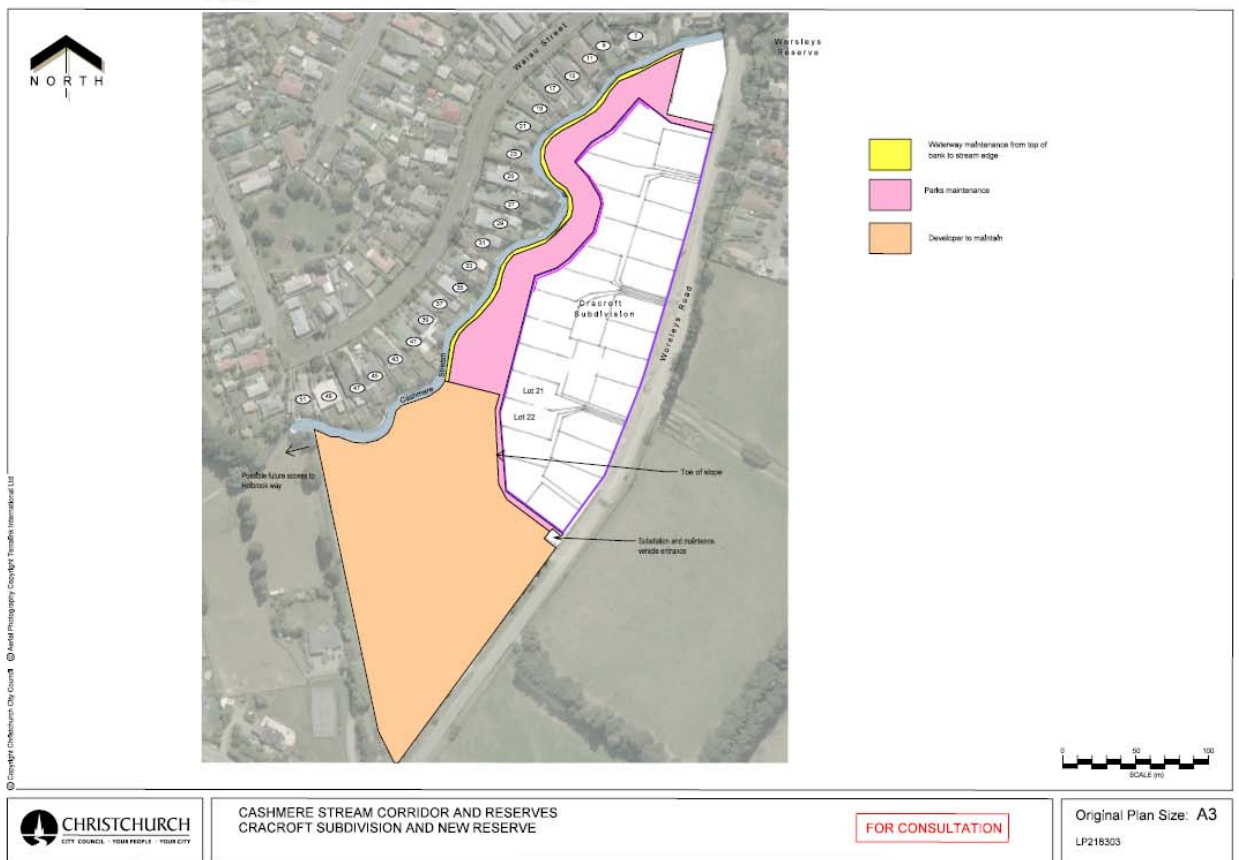


**CHRISTCHURCH**  
CITY COUNCIL YOUR PEOPLE YOUR CITY



CASHMERE STREAM CORRIDOR AND RESERVES  
CRACROFT SUBDIVISION AND NEW RESERVE

FOR CONSULTATION



CASHMERE STREAM CORRIDOR AND RESERVES  
CRACROFT SUBDIVISION AND NEW RESERVE

FOR CONSULTATION

**CASHMERE STREAM GREEN CORRIDOR LANDSCAPE ENHANCEMENT  
Consultation Summary**

The consultation on this project was carried out in March/April 2008 and received 61 submissions.

Submitters were asked to respond to a concept plan for a landscape enhancement and also asked if they would be interested in participating in a community planting day.

<b>Landscape Proposals</b>	<b>Number of Responses</b>	<b>Percentage</b>
<i>Yes – I support the proposed concept plan</i>	47	77 %
<i>No – I do not support the proposed concept plan</i>	11	18 %
<i>Position not indicated</i>	3	5 %

<b>Community Planting Day</b>	<b>Number of Responses</b>	<b>Percentage</b>
<i>Yes – I would like to take part in a community planting day</i>	35	57 %
<i>No – I would not like to take part in a community planting day</i>	14	23 %
<i>Position not indicated</i>	12	20 %

While these figures indicate strong support for the project in general, the following issues were also identified:

- Plantings – height of plantings and requests for exotic/colourful plantings.
- Cashmere Stream – potential flooding of the reserve.
- Pathway – placement of the path.
- Historical link to the site

Support Yes	Support No	Planting Day Yes	Planting Day No	Comments	Team Comments
Y		Y		No comment on the plan, but would like to ensure she is included in the community planting day. Response via telephone.	
Only if you do what I say		Y	N	So far too many native cabbage trees, flax and tussock type plantings that have been put in far too close in the lake area. I don't like these natives at all. I like Kowhai, Hebe and colourful plants like azaleas, rhododendrons, camellias, carpet pink roses (not white, either). Please don't plant any cabbage trees, flax or tussock opposite the back of our place (39 Waiata Street, Cracroft, Christchurch). THANK YOU.	There are 65 cabbage trees and some are riparian.  Plants along the Cashmere Stream section of the reserve have been chosen in keeping with the ecological theme of this area. These species will attract ensure the success of the green corridor. Kowhai trees have been included in the planting plan.  Rhododendrons are not deep enough rooting plants so are not appropriate for bank stabilisation.
Y				Love the concept and ideas, especially proposed link with Holbrook Way. Very concerned at choice of plantings on section boundary. We purchased Lot 19 to enjoy the outlook and for kids to access the park. We will not allow any shrubbery to grow higher than the present wrought iron fence (approx. 1m high). Many thanks.	Planting directly in front of the retaining wall to be low planting
Y		Y		We think that the outlined plans are excellent.	
Y		Y		I attended an on-site meeting with Steven Gray as part of the Cracroft Residents' Assn. Very happy with the plans so far. A few comments though. 1. Development of the land on the opposite side of Worsleys Road will affect things, and hopefully details of the development will be revealed soon. Re-aligning Worsleys Road is possible and will affect planting. If a play area for children is required, I believe it would be better positioned on the other side of the road, away from the stream. 2. I would be happy with natives along the stream, but would like some exotics closer to Worsleys Rd. Kowhai trees should be planted to encourage the bellbirds now being seen. 3. It was heartening to hear of proposed walkways in the area, and I would support their construction. The proposed walkway to Holbrook Way should be pursued - I believe the Council already own a section on Waipara Street (opposite the playground) which could be used to give even better access to the area. Keep the good work.	We are still awaiting information on the subdivision across the road, but we are aware that this potentially could involve a slight road realignment. So planting along the road will be left until last. Exotic trees to be included near Worsley's Rd part of the reserve. Kowhai trees have been included in the plans.
Y		Y		Thank you for allowing us the opportunity of consultation and feedback to Cracroft subdivision property owners. The plan looks impressive and will further enhance this area. <b>Planting Proposal:</b> We are generally in favour of the native planting in the esplanade reserve but would suggest the inclusion of at least one kauri for at least one of the larger trees at the south west of the reserve near the river. We have a kauri in our present garden at 4 Worsleys Road and it is doing well. We would also like consideration to be given to planting in the reserve area further away from the river, of exotic trees which provide colour, especially in Spring eg Yoshino Cherry (Prunus xyedoensis) and other flowering trees such as Prunus nigra, and in the Autumn, eg Golden Ash, Lime, Scarlet Oak, Japanese Maple etc. <b>Retaining Wall:</b> Also we would like it to be noted that the retaining wall and a short distance beyond it is private land, at least for much of the wall, particularly for lot 1, which we have purchased. We would like that to be respected and for the taller trees to screen the wall, which screening has, we understand, been requested by residents across the river, to be kept a reasonable distance from the wall...cont	Kauri tree may not be very well suited to the reserve as it is quite exposed. There is the potential to look at this as the reserve develops in the future.  Exotic trees to be included in the plan near the Worsleys Road end of the reserve.  Planting directly in front of the retaining wall to be low planting on Christchurch City Council land only.

Y			<p>We wish to make use of the excellent original soil at the foot of the retaining wall and to be able to grow climbing plants up some of the wall. We intend to plant items such as rosemary, and geraniums and similar plants at the top of some of the wall, which will expect will provide some screening. However, we realise that other residents may not wish to utilise their part of the wall in that way. <b>Other Facilities:</b> Consideration could be given to the provision of playground facilities in the Reserve Area. As trees grow taller, consideration should be given to lighting the pathways for security and safety, but such lights should be designed to minimise any upward throw of light so that the view from on top of the wall is not compromised at night.</p>	<p>Playground - the installation of a playground has not been included in the current plans. But suitable clear space in the reserve will be set aside, so that if a need arises in the future it is something that could be added to the reserve. Lighting - CPTED (Crime Prevention through Environmental Design) would not support lighting in this reserve. "Lighting should not be provided in areas not intended for night-time use, therefore avoiding a false impression of safety". National guidelines for CPTED, part 1: Seven qualities of safer places, pg 19.</p>
Y	Y		<p>Background to submission: As an immigrant from UK aged 40-plus, with a love of the outdoor, I was fascinated by NZ flora and fauna, and sought to familiarise myself with them through outings with interest groups - enjoyable and informally educative. With increasing public and civic interest in the environment in 1990s, and because I lived on the banks of a stream, the CCC's Waterways Enhancement projects, press releases and publications became my focus. When, in 1997, my stream bank started to erode, I contact the Council's Water Services unit and through their officers Chris Rance, operations engineer, and Louisa Davies, landscape architect, with input from myself, my streambank was transformed, becoming in spring 1999 the first portion of the Green Corridor on the true left bank of the Cashmere Stream, opposite the present project site...cont</p>	
			<p>Submission: I heartily endorse the three-stage plan, trusting the project can be completed within the timeframe of June 08 - October 09. I have studied the plant lists overleaf and wish to offer these suggestions. Stage 1: Planting to screen retaining wall. (I assume that with flood retention measures upstream much, if not all, of this area will be above annual flood level.) Aristotelia serrata: mako mako, vineberry - fast growing. Coprosma lucida - shining karamu. Large-leaved to contrast with small-leaved divaricating varieties - very colourful fruits. Cortaderia richardi - toetoe grass. Hebe salicifolia - koromiko - attractive long, drooping flower spikes. <b>Stage 3:</b> Future native planting (presumably in narrow corridor from northern end, and including large area to the south) post-September 2008. Fuchsia excorticata - kotukutuku - largest fuchsia in the world, orange-fawn, papery, peeling bark, deciduous...cont</p>	<p>Screen wall plantings - plants have been chosen for their size and ability to grow in dry conditions but not lose the view and habitat value. Stage 3 planting - The plant list was put together by a botanist, but this can be re-assessed. All these listed plants have been included in the planting plan (full plant list is quite long and not every plant was included in the consultation document for that reason). The five finger is quite hard to get established but if it is on the ecosystem list it could be added. The plantings at the other end of the stream have been chosen in relation to the soil change and whether they are on the ecosystem plant list. If the podocarp planting goes ahead, it could be underplanted with more sensitive plants in the future.</p>
Y	Y		<p>Prunomitys taxifolia - matai - black pine - podocarp heritage tree. Pseudopanax arboreus - whauwhaupaku - five finger. Pseudopanax crassifolius - lancewood - distinctive in juvenile and mature stages. Pseudowintera colorata - horopito - peppenwood - coloured foliage. 2-3 years down the track under established canopy, frost-tender. Allatryon excelsus - litoki - pinnate shiny leaflets, magnificent fruit capsules. Dicksonia squerosa - whiki - tree fern. We have the opportunity to make this reserve extra special - biologically diverse, as encouraged in Christchurch Naturally: The Biodiversity Strategy launched 2004, following publication of the glossy brochure published 2000. Cashmere Stream Green corridor might then merit a place on the visiting lists on pages 23 and 43 of this publication. References: Various CCC Water Services unit publications - Streamside Planting Guidelines, 1996; Indigenous Ecosystems of Atautahi-Christchurch, Set 1, by Lucas Associations for Christchurch Otautahi Agenda 21 committee, 1995; ECan - Caring for the Streams of the Canterbury Plains, Jan. 2005.</p>	
Y	Y		<p>Looks great! Thanks for the opportunity to be involved.</p>	



Y	Y	Y	Thank you for the comprehensive planning plan for the Cashmere Stream reserve. We are delighted with the range of native planting you have allowed for. We do have some suggestions which we hope you will consider. We are particularly interested in: 1. Attracting more native birds. The CCC "Bush Bords" publication lists plants which will attract birds, some of which plants are already on your plan. Would you also consider the following" Fuchsia exorticata; Aristotelia serrata; Pseudopanax arboreus; Pseudopanax crassifolius; Schefflera digitata; Northofagus fusca; Corynocarpus laevigatus. 2. Adding to the colour of the landscape. Some of the exotic species would bring colour to the area and also attract birds. Again, I refer to your "Bush Birds" publication. I would particularly like to look out on: cherry; apple; strawberry tree (Is that Cornus Caputata?); wattle; and banksias. Perhaps there is a place for eucalypts at the pond area end....cont	The plants asked to consider are not on the ecosystem plant list (except for perhaps the five finger). These could be added later with the podocarp planting.
			3. Incorporating some historical links with the Cracroft Wilson name. On the hill above Shalamar Drive, almost all the streets have Indian names. It would seem fitting to translate that link with Cracroft Wilson to the planting by incorporating at least one or two species which grow in India. The ones which come to mind are Rhododendrons and Magnolias, but there may be others of which you know. My knowledge is certainly limited in this area. We are very much affected by this whole subdivision. The tranquility which we have enjoyed for the past twenty years was one of the reasons for buying this house. Our house is close to the stream, and our kitchen - where we spend considerable time - looks directly out onto the reserve and the sections behind it. What is planted there will be our daily background, and as gardeners and trampers, we are very aware of our outdoor surroundings. Thank you for the opportunity to contribute. We would be very happy to talk about any of these ideas with you.	We will be installing an interpretation panel in the reserve at northern entrance, this will then provide the historical link.
Y	Y	Y	(a) Will any effort be made to exclude cyclists from the walking track by clear signage? (b) Would consideration be given to including an area of exotics - in the area marked "developer to maintain"? Autumn colours are a feature of Cracroft and would add character to a subdivision where the residents may not have room for planting their own. (c) Waiau St Streamside residents have enjoyed rural views to the south and I feel it is important that the plantings provide a screen to that view and not a barrier. High, evergreen native trees would eventually obstruct the residents' outlook as the trees mature. For the new subdivision, if trees are too high they will shade properties in the late afternoon.	The pathway will be a dual use pathway, so it can cater for both cyclists and walkers.  Exotics to be included in the plans at the detention pond end of the reserve.
Y	Y	Y	Thank you for keeping us informed. Given enough notice/four availability, there are four of us here, willing to help with planting. The project is enormous value to our community. I am especially supportive of the Podocarp plantings. Support choice of plants and style, but would like more screening for backyard privacy for Waiau Street properties. Siting of picnic tables? Where more distant from houses? Loss of privacy - Waiau Street backyards - compromise - view of water and screening by appropriate planting - loss 2-fold - houses and paths/walkers - last plan sighted by Waiau St residents had bank between new houses and the esplanade reserve - screening - no consultation on this change.	Plants along the Cashmere Stream section of the reserve have been chosen in keeping with the ecological theme of this area. These species will ensure the success of the green corridor. Strategic planting by neighbours on their private properties however are encouraged.
Y	Y	Y	Future access to holbrook Way, and the linking of as many walking tracks as possible, are important considerations. I do support the concept plan, but have some concerns about the wholesale uptake of native species. Many of these grow woody and unattractive once past their youth, and require high maintenance/level replanting. As can be seen further up Cashmere Stream, too many grasses/flaxes, etc can clog the waterway and affect water quality adversely through impeded flow.	Maintenance of the plantings will manage this issue. We believe these plants are very attractive, but everyone has a different view on what they like or don't like. Plants along the Cashmere Stream section of the reserve have been chosen in keeping with the ecological theme of this area. These species will ensure the success of the green corridor
Y	Y	Y	I would like to see heavy planting of tall native shrubs along the Cracroft subdivision wall to hide it from view. I very much like the planting plan in respect to groups of trees within the reserve area - all too often trees are not included in reserve plantings, which diminishes the ecological value of the area. Please keep the trees in the planting plan! I support the future planting of a podocarp forest around the detention pond area, and would like to see this become a bit more extensive (eg, better link the five patches together), and to see it undertaken within a 5-10 year plan. I support the 100\$ native planting.	We will try to work with individual residents where we can to accommodate them as much as we can in relation to height of trees, plantings in front of the retaining wall.

Y			Y	As we border the reserve on the west and south side of our property, we would like to be specifically consulted about planting in that immediate area. We value the sunlight on our west boundary and would not want to see tall trees planted in this vicinity right on the fence line and further into the reserve. We would like to see suitable small shrubs planted on our south boundary, next to the pathway which exits onto Worsleys Road.	Plants along the Cashmere Stream section of the reserve have been chosen in keeping with the ecological theme of this area. These species will ensure the success of the green corridor
Y			Y	Looks awesome. Thank you all. I have spent a lot of time, money and energy on planting my section with natives, am sure the bellbirds, waxeyes etc will continue to visit :)	
Y			Y	This proposal looks fantastic, wholeheartedly in support.	
Y			Y	Thank you for the opportunity to put forward my comments in regard to the proposed planting of the Cashmere Corridor Landscape Enhancement proposal. I support the general plan, but request that some exotic trees be included along with the NZ natives, to complement the trees in Worsleys Reserve and to acknowledge the influence of Cracroft-Wilson's settlement of the area.	Exotic trees to be included in the plan at the retention pond end of the reserve.
Y			Y	The proposed plan to do some landscape enhancement along the Cashmere Stream is to be commended. The planting which has already been done looks most attractive and augurs well for the future. We live at 47 Waiiau Street and our property is bordered by the Cashmere Stream opposite to the south end of the reserve, and we are concerned that 'netting' and metal posts which have been left in the stream for many months are both unsightly and catch debris floating downstream, forming small dams. We hope that this part of the river can be properly cleaned soon. Thank you for the opportunity to comment.	The netting and metal posts will be addressed with the contractors maintenance agreement. The plastic fencing must remain until we get Ecan clearance.
Y			Y	Kowhai; Banksia - Australia - gum; Flax; Rimu; Kauri; Pohutakawa; Rata. Plant for the future and a planting to be proud of. Please plant natives which will attract the bellbirds and tuis back. Since development, we haven't heard them. Spawn some salmon in the stream. It could be a real wildlife reserve and a wonderful area for future wildlife development with the valley surrounds and water off the hills.	This is a fish and game issue. There are areas in the upper regions of Cashmere Stream that has trout spawning areas.
Y			Y	I note that "picnic tables" are not shown on the plan (only in the "key"). Seats with tables would be worthwhile. Probably have to be fixed (thieves) or very heavy. Very pleased with basis ideas.	Picnic tables are shown on plan, but are very small. They will be concreted to the site to avoid thievery.
Y			Y	From what I have read so far you seem to be well on track.	
Y			Y	I think it is an ideal plan and will suit all age groups to enjoy.	
Y			Y	Sir/Madam, I would like to congratulate you for the effort so far with this project. I can see that you are keen with your natives. Unfortunately, natives (plants) are boring. All those ????? Look the same. I don't think the sophora will make much impact, and there is so much ????? spring already! I live just up the hill above the reserve and find Chch in autumn one of the nicest looking cities in the world. The other is to see if it is possible to include the road within the reserve by plantings (clumps of shrubs or trees) on the other side of the road - it then becomes a real corridor!	Colourful exotics to be included in the plan at the retention pond end of the reserve.
Y			Y		
Y			N		
Y				Thank you for this chance to write to you. I support some of the plan. Please can you take away the trees planted at the back of our house. We live at number 45 Waiiau Street. At present we have a lovely view of the hills, but this will be blocked once the trees grow taller. They are cabbage trees and pittosporums planted close together adjoining our boundary. Could they please be replaced with low growing shrubs. It is not a large area and it would be easier to do it now while they are small. If you would like to come and see for yourself you are most welcome to visit and have a cup of tea with us. The rest of the reserve looks very nice.	Unless the tree is dead, dying or dangerous it would be unlikely that it would be removed. Request for service put through for the trees in question to be looked at CSR90802528.

Y				1. There are no pathways either side of the Worsleys Road edge of the reserve. If there is no future intention to construct a footpath on the roadside of the reserve, a pathway on the reserve side of the Worsleys Road boundary would be essential. 2. No provision seems to be made for rubbish bins. They will be necessary if people are attracted to the picnic tables. Well done on your planning!	Pathways have the potential to be added once the subdivision across the road has been confirmed, as this new subdivision may also involve a slight road realignment on Worsleys Rd. Rubbish Bins - the rubbish will be monitored at the reserve with a view to installing rubbish bins at a later date if necessary. We prefer to encourage users to take their rubbish off site with them. The cost to have rubbish bins emptied is very high.
Y				I think the plan looks great and will provide a good amenity for residents. Hopefully it will also encourage native birds.	
Y				We are not in favour of the sub-division. However, the proposed green corridor and landscape enhancement appears to be well thought out. What provisions are there for flooding, please?	Flooding issues to be addressed by the South West Christchurch Integrated Catchment Management Plan.
Y			N	The concept plan looks very good. My only concern is the maintenance problems with the walkway, as when the stream is in flood (as it does at least once a year), there could be problems, but overall apart from that it looks very good.	Flooding issues to be addressed by the South West Christchurch Integrated Catchment Management Plan.
Y				1. Would love to see some colour. Blossom trees, perhaps cherry, or something. 2. Trees with beautiful autumn displays of colour.	Exotics to be included in the plans in the detention pond end of the reserve.
Y			N		
Y			N	Very happy to see this go ahead and we look forward to watching it develop. Any provision for a small child's playground area would be advantageous?	Playground - the installation of a playground has not been included in the current plans. But suitable clear space in the reserve will be set aside, so that if a need arises in the future it is something that could be added to the reserve.
Y				Request for maintenance (overdue) on large existing willows opposite river from # 25 and 27 Waiau Street. What is happening with old concrete building structure under willows opposite river from # 25 Waiau Street? Suggest willow maintenance for shape and trim only, presume trees are preferred to stay for river bank protection, and privacy provided for existing properties. Looks appealing concept! Look forward to update, thanks. Note: what is planned for restriction of bikes, motorbikes, skating?	Two willow trees were removed for health and safety reasons opposite these properties in May. The concrete structure is an old historical pig pen, this will be retained and an interpretation panel installed to provide the public with a historical link. The path will be dual use, so no reason why cyclists, walkers and skaters can't use it. Will monitor the site for motorbike use which will be restricted.
Y			N	We do not disagree with your Cashmere Stream green corridor, as long as provisions are made for a road from Worsleys Road to the subdivision that has been added to Pentonville Close. To drive from town along Cashmere Road, Pennuddock Rise, down Pentonville Close to the new sections is environmentally unfriendly, think of the fumes and the extra petrol. So much for town planning.	It is the intent that Pentonville Close joins to Worsleys Rd however the adjoining properties between Pentonville Cl and Worsleys Road not owned by Council and are not zoned for residential use. Given this the limiting of the join is not known.
Y			N	I think it would enhance the area, and be an asset for the enjoyment of the public in the future.	
Y			N	Please make sure there are plenty of rubbish bins around or the reserve will end up with rubbish everywhere. The first reserve on Worsleys Road the rubbish bin is always, always full. Thank you.	Rubbish bins - the rubbish will be monitored at the reserve with a view to installing rubbish bins at a later date if necessary. We prefer to encourage users to take their rubbish off site with them. The cost to have rubbish bins emptied is very high.
Y					

N	Possibly, depending on family commitments	We notice that you are continuing with a native planting theme. This is being considerably overdone in Christchurch. Christchurch City, I believe, has a policy of keeping streams and recreational areas with a "see through" policy for safety reasons. The planting suggestion we received shows extensive planting around the detention ponds and Cashmere Stream. Why can't we have clear, unobstructed views of these potential hazards? This extensive planting of grasses and flaxes is also a potential breeding ground for rodents. Self-seeding plants, eg Coprosmas, are not a good choice. The small-leaved kowhai does not thrive in this environment, as has been observed in nearby areas. We would like some thought being given to a children's playground and the planting of large trees to leave an open area for such things as family cricket and soccer.	Plants along the Cashmere Stream section of the reserve have been chosen in keeping with the ecological theme of this area. These species will ensure the success of the green corridor. The installation of a playground has not been included in the current plans. But suitable clear space will be set aside so that if a need arises in the future it is something that could be included. In the interim this will also provide space for family games.
N	Y	As owners of Lot 23 we do not want plantings near the iron fence to impede our view of the river and reserve. We query the extent of the developer's involvement in on-going maintenance.	Planting directly in front of the retaining wall to be low planting.
N	Y	Planting should include: various oak trees, for the ducks; rowan trees for the birds; walnut trees for the people; kowhai trees for bellbirds - more than one species. An area as big as this must have an area for non-native trees. It would have been nice to have been involved from this area's inception, not now that it is all but completed. Sort of, as the RMA requires! In response: Our objections are regarding the walking track along the river edge. We and other close neighbours want to see the track moved away from the river's edges, as proposed, particularly close outside No. 35. Our living is situated at the back of the house, therefore a big invasion of our privacy! Furthermore, control of dogs and owners is necessary as it's fast becoming dog poo alley! We have concerns also about stagnant water lying in ponds, it seems to have no escape because of plastic fences at the river's edge. Thank you.	Quercus (Oak) will be considered in the amended plan. Walnut trees attract rats which is why we haven't included them and Kowhai trees have been included on the plan.
N			The alignment of the walking track is conceptual. We will however move this further away from the Cashmere Stream side of the reserve. The dog control policy and bylaw is currently being reviewed. This will dictate any rules/regulations in relation to dog handling in reserves. The stagnant water issue is a maintenance issue. This will be addressed with the contractors maintenance agreement. The plastic fencing must remain until we get Ecan clearance.
N		I would like to be involved in the planning and discussion on the things I have mentioned in my submission. The most important thing is that the Cashmere Stream and the Heathcote River are there to stop and reduce the stormwater flooding in the south-west area which affects our Sparks Road Garden land and the land that surround us, and for this reason special consideration in the planning is needed before any work is started. the Cashmere Stream and the Heathcote River play a major role in removing stormwater. The performance of the Cashmere stream and the Heathcote River is in very poor stormwater flow capacity, which is an urgent matter to be considered in the planning when developing the stream's Green Corridor Landscape Enhancement. You must take into consideration that other people's livelihood is at stake, and that stormwater from upstream subdivision heavily damaged our vegetable crops in August 2006. Stormwater from the Henderson drain came across my neighbour's land.	Flooding issues to be addressed by the South West Christchurch Integrated Catchment Management Plan.
N	N	I do not oppose planting schemes as long as water flows down Cashmere Stream are not impeded in any way, only enhanced. Council is notorious for getting compensatory storage wrong. I would like to see if sufficient storage is in place before any restrictions of waterways are compromised through plantings.	The plantings have been designed to minimise interference to the water flow. The subdivision has been designed to be stormwater neutral. Peak flows are not increased by the subdivision, it goes through the basin and slows before going back out again.
N		It would be good to see oak, English trees - some elms - anything in keeping with the heritage of the original Cracroft plantings continued in this area - instead of Council's perpetual repetitious planting of swamp bush!	We will be installing an interpretation panel, this will provide a historical link to the site.

				<p>Flooding issues to be addressed by the South West Christchurch Integrated Catchment Management Plan.</p>
N - if the planting blocks views	Y		<p>1. It appears that reshaping of the riverbank edges, riparian planting and shrub and associated ground cover planting could reduce the flood flow capacity of the stream, thereby increasing the flooding upstream in the Cashmere Stream Floodplain and in the Henderson Basin. This would occur by reducing the normal waterway size and by the planting increasing the roughness of the bank that floods flow over. 2. The landscaping of Francis Park a few years ago has resulted in banks slumping into the waterway which has reduced the flood flow. This landscaping densely planting the Cashmere Stream floodplain has meant the floodplain no longer carries flood flows. This is already adding to the flooding in the Henderson Basin with adverse effects of all the owners upstream of Francis Park.</p> <p>The proposal is very attractive and builds upon the reserve created by the developer. At present cars park inside the subdivision for visitors to this new attractive area. Other cars park alongside the reserve in Worsleys Road. As the road along the reserve has been narrowed by the wire rope fence, cars are forced to park partly on the carriageway, effectively making the road one way. In addition, there is no footpath and yet Worsleys Road is a very popular road with walkers, joggers, mountain bikers and others. To remove the potential injuries and deaths by such a traffic hazard, the wire rope fence should be moved into the reserve 8m, a footpath created along the road edge of the reserve, and 90 degree parking created off the road along the reserve frontage. Without such improvements I feel the future use of the reserve will create traffic hazards that will result in serious injury or loss of life.</p>	<p>There is the potential for footpathing to be added once the subdivision across the road has been confirmed. The new subdivision may involve a slight road realignment as well as new paving. Confirmation on this is still to come and it may be some time away. Parking/road issues may be assessed with the future subdivision.</p> <p>The current fencing is used to keep cars off the reserve. The location of the fence is also due to the positioning of under ground cabling.</p> <p>Parking/road issues may be assessed with the future subdivision.</p>
N - if the planting blocks views		N		<p>Plants along the Cashmere Stream section of the reserve have been chosen in keeping with the ecological theme of this area. These species will ensure the success of the green corridor.</p> <p>No further planting is planned in front of this property, and the current planting is low level planting. If there is an issue in the future this will be considered at the time.</p> <p>The planting in the basin is part of the resource consent conditions for the reserve.</p> <p>The dog control policy and bylaw is currently being reviewed. This will dictate any rules/regulations in relation to dog handling in reserves. The Council has requested feedback on this proposal from approximately 500 local residents including two of the local residents associations, cashmere stream care group and asked for submissions to the greater Christchurch public via the "have your say" option on the Council website. This has also included site visits with key groups in the area. We believe this is more than sufficient for fulfilling our consultation obligations. We work very hard on the consultation aspect of projects and we review every single submission that we receive. Public feedback and local knowledge is invaluable for making a project successful.</p> <p>The alignment of the walking track is conceptual. We will however move this further away from the Cashmere Stream side of the reserve.</p>
N - if the planting blocks views			<p>During our conversation I stated that there were many native riparian plants that would not have created a problem with the view, but thus far nothing further has happened and the plantings are growing apace. We get the distinct feeling that any view from our property is to be completely obliterated. We are not in any way averse to native riparian planting on the Cashmere Stream and much that has already been done along the Westmorland section is very attractive and colourful, but mainly flaxes and low growing plants have been used. We have no concerns with the construction of pedestrian pathways, a board walk and picnic tables in the Reserve, but would like dogs to be kept on leashes, as we are hearing stories of dogs crossing the stream onto private property. The general opinion in Waiau Street among those home owners affected by this development seems to be that the Council has overlooked its duty to adequately consult affected residents.</p>	
	Y		<p>Basically the idea is great, but have one or two objections that I would like to make a proposal to change. Love the native planting and also propose there be more mass planting. Lots more native trees and shrubs, flaxes, etc. Not happy with the walkway coming too close to river opposite our back yard. Our privacy is totally obliterated. I propose that the walkway be kept closer to middle of reserve instead of sweeping towards us. Mostly I object to the walkway sweeping close to us and totally losing all our privacy. Please keep it closer to middle. Thank you.</p> <p>It is important to ensure that any planting along waterways is kept well maintained, so the water flow is not blocked.</p>	
		N		<p>The waterway will be maintained in accordance with the contract specifications to ensure a healthy growth and an adequate water channel.</p>

<p>There are standard guidelines for seat installation which have to be followed.</p> <p>We can look at the positioning of trees to provide shade, but we do also need to consider seating in relation to the winter period too.</p>	<p>When designing reserves, may I suggest you follow these commonsense rules: 1. Place seats in shade or semi-shade - NZ sun is a major cause of skin cancer, and it can be uncomfortably hot to sit in for any length of time. 2. Set the seats at a height which does not cut off blood circulation in women's and older children's legs. Most of the seats installed by the Council in reserves, gardens and at bus stops in the city are set at an uncomfortable and dangerous height. 3. Place the seats to face a pleasant view where possible. In some cases, facing in towards the playing area is more important. I often walk in the Westmorland district. Most of the seats placed by the Council break at least two of these commonsense suggestions.</p>		
<p>Request for service created in regard to rubbish issue CSR0802590.</p>	<p>No comments on planting, but please: We would like to take this opportunity to ask if there could be some consideration given to the properties on Worsleys Road opposite the subdivision. We have been left with an unsightly sight which I feel the new owners of the sections won't want to look at. Because the contractors dug up the only lawn and dumped rubbish there, and we see now the public are doing the same, we are left with a mess. If this is of no connection with you could it please be given to the appropriate department.</p>		
<p>Flooding issues to be addressed by the South West Christchurch Integrated Catchment Management Plan.</p>	<p>The poor capacity of the rivers and the stream is caused by: (1) Banks to fall in. (2) The planting of native bush where banks have fallen in. (3) Silt build-up in the bottom of stream and river. (4) Trees and bushes that have grown into the stream and river. (5) Failure to increase the capacity for stormwater flow. (6) Reduction of the width of the stream and river over past years is reducing stormwater flow capacity. The planning must incorporate in their plans and these are: (1) Remove banks which have fallen in. (2) Remove overgrown native bush that has been planted by the Christchurch City Council. (3) Remove overgrown weed. (4) Rebuild and streamline the embankment. (5) Widen them to (cope) for the event of a one in 50-200 year flood. (6) Commence dredging of the stream and the river. (7) Remove recently dumped shingle in the Heathcote River that has reduced flow capacity of stormwater. (8) Keep tree planting well away from the Cashmere stream. (9) Keep planting of native bushes and plants well away from the Cashmere Stream.</p>		
<p>The alignment of the walking track is conceptual. We will move the track further away from the Cashmere Stream side of the reserve.</p> <p>CPTED (crime prevention through environmental design) would not support lighting in this reserve.</p> <p>"Lighting should not be provided in areas not intended for night-time use, therefore avoiding a false impression of safety". National guidelines for CPTED, part 1: Seven qualities of safer places, pg 19.</p> <p>Security cameras are not used in any of our reserves.</p> <p>It is standard procedure to provide vehicle access to maintain a reserve, so this will be included.</p> <p>Flooding issues to be addressed by the South West Christchurch Integrated Catchment Management Plan.</p>	<p>(10) Keep walkway well away from the Cashmere Stream to stop or reduce drowning. (11) Flood lights over walkway to make area safe. (12) Security camera to stop sexual violence and murder. (13) Access for vehicle to maintain the Cashmere Stream. Special consideration in planning is needed to stop a national disaster like those in the North Island. The last storm event in Christchurch was in August 2006, and the rainfall was only rated one in five years and the damage that resulted was serious. The photos show what the problem is with the Cashmere Stream and the Heathcote River before the storm flooding event. The photo show what happens during a stormwater flooding event. It shows that the Cashmere Stream and Heathcote River, with all these restrictions, is causing the stormwater flooding on Sparks Road Garden land and the land that surrounds us. This August 2006 storm event was "Rainfall rated" one in five year. What will happen if you have a one in 50 year event?</p>		
<p>Flooding issues to be addressed by the South West Christchurch Integrated Catchment Management Plan.</p>	<p>Our stormwater system should be capable of handling this without stormwater flooding, a requirement under the Building Act and 1991 Resource Management Act. My conclusion is that the Cashmere Stream and the Heathcote River are there for a purpose, and that is to stop and reduce the stormwater flooding of the south-west area and the land that surrounds the Cashmere Stream and the Heathcote River. My policy is, do it right the first time and save money in the long-term. If you need my assistance or help or anything please fee free to call me.</p>		

	<p>Please note that normal traffic counts would not reveal the true usage of this portion of Worsleys road, especially on fine weekends and summer evenings, when the normal recreational traffic is swelled by middle-aged or elderly people who simply want to park by a nice environment so close to the city. Please don't spoil a good concept by not providing for the basics.</p>				
--	--	--	--	--	--

## 9. SIGN OF THE TAKAHE – LEASE

<b>General Manager responsible:</b>	General Manager City Environment, Jane Parfitt; DDI: 941 8608
<b>Officer responsible:</b>	Transport & Greenspace Unit Manager
<b>Author:</b>	Bill Binns, Property Consultant

**PURPOSE OF REPORT**

1. The purpose of this report is to seek the Spreydon/Heathcote Community Board's recommendation to the Council to approve:
  - (a) The surrender of the existing lease with Summit Dining Limited.
  - (b) Enters into a new lease with Bowin Holdings Limited.
  - (c) The Corporate Support Manager be given delegated authority to approve the new lease.

**EXECUTIVE SUMMARY**

2. The current tenant (Summit Dining Limited) has decided to move on and rather than assign the lease to a specific party they decided to tender the remainder of the term of the lease. (6 years with the lease expiring on 30 June 2014.)
3. A director of Summit Dining Limited has advised that a successful tender has been found (Bowin Holdings Limited) who he feels meets the Council's criteria.
4. As the existing lease has only six years to run Property Consultancy Manager is suggesting that the current lease is surrendered by Summit Dining and a new lease entered into with Bowin Holdings Limited.
5. The reason behind this suggestion is twofold.
  - (a) In the normal course of events the existing lease would run to it expired on 30 June 2014. At that point the Council would tender a new lease which would cost the Council time and money. By tendering the lease Summit have saved the Council this expense and this meets the Council's objective in terms of publicly notifying that a lease is available.
  - (b) With the surrender of the current lease the Council is in a position to review the terms and conditions and make appropriate changes. By engaging in this process the lease would be updated to meet current commercial conditions.
6. The successful tenderer is Bowin Holdings Limited whose directors are Joanna Unwin and Mark Bouvet who have experience in marketing, promotional campaigns, tourism and operating a restaurant. On checks carried out by staff the directors would meet the requirements under the terms and conditions set out in the current Auckland District Law Society Deed of Lease. The Directors will also provide personal guarantees.
7. It is proposed that once agreement is reached the Council will enter into a lease on the following terms.
  - (a) A term of 6 years with a right of renewal for a further 6 years.
  - (b) Rent reviews will be carried out every three years.
  - (c) A base rent will be \$60,000 per annum plus GST (the minimum rental).
  - (d) or 6% of the tenant's gross sales plus GST which ever is the greater.

**FINANCIAL IMPLICATIONS**

8. The Revenue from the rental will remain unchanged from current levels.



**9 Cont'd**

**Do the Recommendations of this Report Align with 2006-16 LTCCP budgets?**

9. Yes the recommendations are in alignment with the budget.

**LEGAL CONSIDERATIONS**

10. The first consideration is that Summit Dining Limited meet all of its obligations before the surrendering of the lease. Secondly that Bowin Holdings Limited agree to the terms and conditions of the new lease.

**Have you considered the legal implications of the issue under consideration?**

11. Provided that the provisions in 10 are met all implications have been considered.

**ALIGNMENT WITH LTCCP AND ACTIVITY MANAGEMENT PLANS**

12. Yes

**Do the recommendations of this report support a level of service or project in the 2006 LTCCP?**

13. Yes

**ALIGNMENT WITH STRATEGIES**

14. Yes

**Do the recommendations align with the Council's strategies?**

15. Yes

**CONSULTATION FULFILMENT**

16. N/A

**STAFF RECOMMENDATION**

It is recommended that the Council:

- (a) Consents to the surrender of the existing lease with Summit Dining Limited provided that they have met all their company's obligations under the lease.
- (b) Agrees to a new lease to replace the surrendered one, on terms and conditions negotiated between the Council and Bowin Holdings Limited
- (c) That personal guarantees be provided by the shareholders and directors of Bowin Holdings Limited.
- (d) That Summit Dining Limited and Bowin Holdings Limited meet all costs associated with the lease surrender and drawing up the new lease.
- (e) That the Corporate Support Manager be given delegate authority to approve the new lease.

**CHAIRPERSON'S RECOMMENDATION**

For discussion.

**10. KEEP NEW ZEALAND BEAUTIFUL CONFERENCE**

<b>General Manager responsible:</b>	General Manager Regulation and Democracy Services, Peter Mitchell DDI 941-8462
<b>Officer responsible:</b>	Democracy Services Manager
<b>Author:</b>	Jenny Hughey, Community Board Adviser

**PURPOSE OF REPORT**

1. The purpose of the report is for the Board to decide whether or not it wants to approve funding for a Board member to attend the Keep New Zealand Beautiful Conference and Annual General Meeting in Dunedin from 10 to 21 September 2008.

**EXECUTIVE SUMMARY**

2. The Board has one representative on the Keep Christchurch Beautiful Committee, Karolin Potter.
3. The Committee is a voluntary organisation, which aims to promote a cleaner, more beautiful environment within Christchurch, and to raise the level of awareness of what the individual can do to improve his or her community and reduce litter. Notice of the national conference has been received. Christchurch has a member on the Keep New Zealand Beautiful Board.

**FINANCIAL IMPLICATIONS**

4. The cost for one member to attend would be approximately \$650, which would be met from the Board's operational budget for 2007/08. This would cover airfares, accommodation for two nights and conference registration.

**Do the Recommendations of this Report Align with 2006-16 LTCCP budgets?**

5. Yes.

**LEGAL CONSIDERATIONS****Have you considered the legal implications of the issue under consideration?**

6. There are no legal considerations.

**ALIGNMENT WITH LTCCP AND ACTIVITY MANAGEMENT PLANS****Do the recommendations of this report support a level of service or project in the 2006-16 LTCCP?**

7. Yes.

**ALIGNMENT WITH STRATEGIES****Do the recommendations align with the Council's strategies?**

8. Yes, Page 61 of the LTCCP, Strategic direction, Healthy Environment.

**CONSULTATION FULFILMENT**

9. Not applicable.

**STAFF RECOMMENDATION**

It is recommended that the Board decide whether or not to approve funding for a Board member to attend the Keep New Zealand Beautiful Conference in Dunedin from 19 to 21 September 2008.

17. 06. 2008

27

**10 Cont'd**

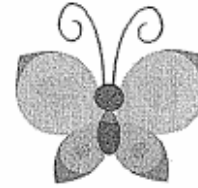
**CHAIRPERSON'S RECOMMENDATION**

That the Board approve funding for Karolin Potter to attend subject to her availability.



**Keep New Zealand Beautiful**

**Conference Information  
"Touching Tenderly"**



**DATES:** Friday 19 to Sunday 21 September 2008

**VENUE:** Victoria Hotel, 137 St Andrew Street, Dunedin

A special conference rate of \$118 per room per night has been negotiated which includes breakfast. Please find enclosed a brochure. Book directly on 0800 266 336 stating that you are attending the conference.

**PROGRAMME:**

**Friday**

- Registrations will be taken from 3:00pm–6:00pm
- Welcomes from our deputy Mayor, KDB, KNZB
- Pre-dinner drinks
- Dinner
- Awards for best towns, best loos, Chairman's excellence
- Keynote speaker and/or performance
- Formal farewell to Barry Lucinsky CEO

**Saturday**

- Prepare to be enlightened, entertained and informed in the morning. You will be involved in several workshops and interact with speakers from various relevant agencies. One workshop will be a sharing of ideas, frustrations and/or triumphs with programmes of similar sizes so please come with information to share.
- After a light lunch we will then embark on a bus tour culminating in a visit and afternoon tea at the newly built, and soon-to-be world famous, Chinese Garden.
- Saturday evening promises to be one to remember with pre-dinner nibbles in the Butterfly Exhibition of the Tropical Forest. This will be followed by a meal in the Museum Atrium. A butterfly dress theme is optional. Speakers (political parties informing us on their environmental policies) and a chance to ask questions will conclude a great day.

**Sunday**

- The conference concludes immediately after the Annual General Meeting on Sunday morning but guests may wish to extend their stay and visit some of our city's restaurants and main attractions.
- Costs are now confirmed at \$230 with an early bird fee of \$200 if paid before 31 May 2008.
- Registrations to Darlene Thomson, PO Box 5045, Dunedin.

For further information, telephone Darlene on (03) 474 3401 Tuesday to Thursday or by email [dethomso@dcc.govt.nz](mailto:dethomso@dcc.govt.nz).



**Keep New Zealand Beautiful Conference 2008 –  
Registration Form**



Friday 19 to Sunday 21 September 2008  
Victoria Hotel, 137 St Andrew Street, Dunedin

**Name:** \_\_\_\_\_  
**Organisation:** \_\_\_\_\_  
**Position within Organisation:** \_\_\_\_\_  
**Address:** \_\_\_\_\_  
 \_\_\_\_\_  
 \_\_\_\_\_

**Telephone:** \_\_\_\_\_  
**Fax:** \_\_\_\_\_  
**E-Mail:** \_\_\_\_\_  
**Please note any dietary requirements:** \_\_\_\_\_

Number of attendees (please provide information below): \_\_\_\_\_

Cheque enclosed:

**Payment before 31 May 2008      \$200.00 per person**  
**Payment after 31 May 2008      \$230.00 per person**

Please make cheques payable to Keep Dunedin Beautiful

**Please note that hotel bookings are to be made directly with The Victoria Hotel, contact 0800 266336.**

**Additional Attendees information:**

	Person One	Person Two	Person Three	Person Four
<b>Name</b>				
<b>Organisation</b>				
<b>Position within organisation</b>				
<b>Address</b>				
<b>Telephone</b>				
<b>Fax</b>				
<b>E-mail</b>				
<b>Dietary Requirements</b>				

**PLEASE RETURN THIS FORM WITH YOUR PAYMENT TO:  
 KEEP DUNEDIN BEAUTIFUL, PO BOX 5045, DUNEDIN  
 (Please do not e-mail back this form)**

## 11. SPREYDON/HEATHCOTE COMMUNITY BOARD'S DISCRETIONARY FUND 2007/08 – PROPOSED ALLOCATION FOR MOBILE CAMERA AND RECORDING EQUIPMENT

<b>General Manager responsible:</b>	General Manager Regulation and Democracy Services, Peter Mitchell DDI 941-8462
<b>Officer responsible:</b>	Democracy Services Manager
<b>Author:</b>	Jenny Hughey, Community Board Adviser

### PURPOSE OF REPORT

1. To propose that the Board consider a further allocation from its 2007/08 Discretionary Fund towards upgrading a security camera used by the Sydenham Police with a mobile camera and recording equipment

### EXECUTIVE SUMMARY

2. In 2007 the Sydenham Police approached the Board with a request to consider replacing the existing security camera and video cassette recorder (VCR) for which funding assistance was previously provided by the Board.

The supporting information provided mentions that the existing camera “has been invaluable in solving and limiting crime in South Christchurch..... with some success in catching offenders for graffiti, fighting, smashing windows and prowlers. Unfortunately due to the size of the current camera it is difficult to place it in many areas.... and because the camera records to a VCR the images are sometimes difficult to identify...”

3. The Board considered this matter at the 14 September meeting 2007 and carried the following resolution. The Board resolved to allocate \$1,970 from its 2007/08 Discretionary Fund to the Sydenham Police to replace the existing security camera.
4. Following the resolution discussions were held regarding the replacement camera with Community Constable Andrew Gardner, Vaughan Penney Traffic Systems Engineer Transport and Greenspace and Robyn Steel, Team Leader Safer Christchurch. It became clear from the discussions and technical advice that a better outcome could be achieved with computer based lap top equipment which would be of greater value for the Board to purchase than the camera. Consequently the purchase did not proceed.
5. Vaughan Penney Traffic Engineer Transport and Greenspace will be present at the 17 June 2008 Board meeting to provide a demonstration of the lap top based equipment. Community Constable Andrew Gardner will also attend to speak about how this equipment would benefit policing in the local area.
6. The lap top equipment costs \$7,500 which is a complete system together with the necessary training and support. The equipment including all the recording, power supplies and batteries will be supplied in a standalone box so the operator only needs to connect the camera lead, power supply and temporary laptop to operate. This will include a battery supply for 12 hours of operation. The system will work standalone and will record to an on board hard drive. Image data viewing and retrieval can then be done later by taking the laptop to the site and down loading or by exchanging the hard drive and viewing the images at another location.

### FINANCIAL IMPLICATIONS

#### Do the Recommendations of this Report Align with 2006-16 LTCCP budgets?

7. Yes, the Board has a remaining balance of \$23,462 at 29 May 2008 available for allocation from its Discretionary Fund for 2007/08. Page 80, Christchurch City Council's Annual Plan 2007/08 also refers.

### LEGAL CONSIDERATIONS

#### Have you considered the legal implications of the issue under consideration?

8. There are no direct legal issues involved.

**11 Cont'd**

**ALIGNMENT WITH LTCCP AND ACTIVITY MANAGEMENT PLANS**

9. As per paragraph 5. above.

**Do the recommendations of this report support a level of service or project in the 2006-16 LTCCP?**

10. Not applicable.

**ALIGNMENT WITH STRATEGIES/POLICIES/OBJECTIVES**

11. Social Wellbeing  
Community Boards' Discretionary Funding Policy  
2006/09 Board Objective No. 13 'The development and maintenance of safe and strong communities'

**Do the recommendations align with the Council's strategies?**

12. Yes, as above.

**CONSULTATION FULFILMENT**

13. Not applicable.

**STAFF RECOMMENDATION**

It is recommended that the Board consider allocating \$7,500 from its 2007/08 Discretionary Fund for the Sydenham Police to replace the existing security camera with a mobile camera and recording equipment.

**CHAIRPERSON'S RECOMMENDATION**

That the Staff Recommendation be supported.

12. **COMMUNITY BOARD ADVISERS REPORT**
13. **BOARD MEMBERS' INFORMATION EXCHANGE**
14. **MEMBERS' QUESTIONS**
15. **RESOLUTION TO EXCLUDE THE PUBLIC**

Attached.



**SPREYDON/HEATHCOTE COMMUNITY BOARD**

**RESOLUTION TO EXCLUDE THE PUBLIC**

*Section 48, Local Government Official Information and Meetings Act 1987.*

I move that the public be excluded from the following parts of the proceedings of this meeting, namely item 16.

The general subject of each matter to be considered while the public is excluded, the reason for passing this resolution in relation to each matter and the specific grounds under Section 48(1) of the Local Government Official Information and Meetings Act 1987 for the passing of this resolution are as follows:

	<b>GENERAL SUBJECT OF EACH MATTER TO BE CONSIDERED</b>	<b>REASON FOR PASSING THIS RESOLUTION IN RELATION TO EACH MATTER</b>	<b>GROUND(S) UNDER SECTION 48(1) FOR THE PASSING OF THIS RESOLUTION</b>
<b>PART C 16</b>	<b>SPREYDON/HEATHCOTE SMALL PROJECTS FUND ASSESSMENT COMMITTEE 2008-2010</b>	<b>) GOOD REASON TO WITHHOLD EXISTS UNDER SECTION 7</b>	<b>SECTION 48(1)(a)</b>

This resolution is made in reliance on Section 48(1)(a) of the Local Government Official Information and Meetings Act 1987 and the particular interest or interests protected by Section 6 or Section 7 of that Act which would be prejudiced by the holding of the whole or relevant part of the proceedings of the meeting in public are as follows:

**Item 16      Protection of privacy of natural persons      (Section 7(2)(a))**

**Chairperson's**

**Recommendation:** That the foregoing motion be adopted.

**Note**

Section 48(4) of the Local Government Official Information and Meetings Act 1987 provides as follows:

- "(4) Every resolution to exclude the public shall be put at a time when the meeting is open to the public, and the text of that resolution (or copies thereof):
- (a) Shall be available to any member of the public who is present; and
  - (b) Shall form part of the minutes of the local authority."

**Christchurch City Council**

**SPREYDON/HEATHCOTE COMMUNITY BOARD  
AGENDA**

**SUPPLEMENTARY ITEM**

**TUESDAY 17 JUNE 2008**

**17. CONSIDERATION OF SUPPLEMENTARY ITEM  
(A) SPREYDON/HEATHCOTE COMMUNITY BOARD SOUTH LEARNING CENTRE  
WORKING PARTY REPORT – 10 JUNE 2008**

Reason (in terms of Section 46a(7) of the Local Government Official Information and Meetings Act 1987):

- (a) Time constraints related to production of the final report recommendations.
- (b) This report cannot be delayed until a subsequent meeting of the Board because this is the last Board meeting for this financial year and the Board has instructed the Working Party to report back prior to the end of the financial year.

**RECOMMENDATION**

That the Board resolve to consider the supplementary report, as detailed above.

**(A) SPREYDON/HEATHCOTE COMMUNITY BOARD - SOUTH LEARNING CENTRE WORKING  
PARTY REPORT – 10 JUNE 2008**

<b>General Manager responsible:</b>	General Manager Regulation and Democracy Services, Peter Mitchell DDI: 941 8462
<b>Officer responsible:</b>	Democracy Services Manager
<b>Author:</b>	Jenny Hughey, Community Board Adviser

**PURPOSE OF REPORT**

1. The purpose of this report is to:
  - (a) submit the outcomes of the South Learning Centre Working Party meetings held on Wednesday 12 March 2008 and Wednesday 25 May to the Board, and
  - (b) to request that the Board consider approving the allocation of funds from the 2007/08 Board Discretionary Fund to help establish an independent trust to raise funds to enable all children in the compulsory years of schooling to attend learning programmes such as those being offered by the South Learning Centre (SLC).

**A Cont'd**

2. Attendance at the Working Party meetings:

**12 March**

Phil Clearwater (Chair); Nick Major School Principal; Derek Wenmoth Core Education Carolyn Robertson Manager Libraries and Information;

Apologies for absence were received and accepted from Sue Wells and Pat Street

**25 May**

Phil Clearwater Chair Community Board, Michael Aitken General Manager Community Services, Carolyn Robertson Manager Libraries and Information; Pat Street Programmes and Learning Manager; Derek Wenmoth Core Education; Chris Mene Community Board member, and Nick Major School Principal.

Apologies for absence were received and accepted from Sue Wells.

**EXECUTIVE SUMMARY**

3. The need for additional funds for the SLC developed when funding from the Ministry of Education to the SLC was no longer available to ensure that the learning programmes being undertaken with local schools could continue on a free access basis. The Board decided to establish a Working Party and be guided by the Working Party as to how funds would be best used and how best to progress this matter.
4. After considering options the Working Party decided to recommend to the Board that an external trust be established with the broad purpose of raising funds to enable all children in the compulsory years of schooling to attend learning programmes such as those being offered by the SLC. The trust would have a broader purpose than raising funds solely for the SLC as this would provide the trust with a wider scope for raising funds and entering into partnerships with digital computer based organisations. Further, a broader purpose is important given the speed with which digital learning is developing. It is envisaged that the trust would consist of members representing the interests of the community, library, education, technology/business industry and the Community Board.
5. The details of the purpose of the trust, its membership and operational provisions would be developed by a community person who would initially champion the establishment of the trust and at the same time undertake the work necessary for its establishment. A retired school principal from the Community Board area, Dorothy Haywood, has agreed to be champion of the trust and work with other specialists and Council staff to undertake this task. To assist in the task of establishing the purposes and desired outcomes of the trust Dorothy Haywood would be requested to undertake a small scale scoping project which would review the needs in schools and investigate possible sources of funding and possible partners to further ITC learning in our community. The outcome of this project would enable the clear development of the purpose of the trust and provide vital information for the work of the trust especially in its initial work.

**BACKGROUND**

**6. Community Board decision**

- (a) The Spreydon/Heathcote Community Board meeting of 27 November 2008 resolved:
- (i) That the Board places considerable value on the operation of the service provided by the South Learning Centre to the schools in the Spreydon/Heathcote Ward.
  - (ii) That the Board request a report in relation to the motion tabled by Oscar Alpers as follows:
    - (1) That the Board work with officers to seek other sources of funding to cover the balance of the period through to 30 June 2008, including (for example) funding for services to schools in the neighbouring Hagley/Ferrymead and Riccarton/Wigram communities, community trust grants, and forming a new trust to seek funding to continue the service.

**A Cont'd**

- (2) That the Board request the Council to consider implementing a targeted rate for all rateable property in the Spreydon/Heathcote community to provide the required funding of \$205,000 per annum from 1 July 2008, until such time as either other sources of funding are found to provide the service to schools in the community, or until metropolitan funding is found to enable a service to be provided at a similar level to schools in other parts of the city.
- (3) That the Board is prepared to make a one-off grant of up to \$50,000 from the Community Board's discretionary and SCAP funds to enable the continuation of the Learning Centre's services to schools while other solutions to the funding of such services are explored.

**7. Report to Council**

- (b) At the 13 December meeting of the Council the Chairperson (Phil Clearwater) and Deputy Chairperson (Chris Mene) of the Spreydon/Heathcote Community Board made submissions in support of the Board's proposal to allocate a one-off grant of up to \$50,000 from the Community Board's discretionary and SCAP funds to enable the continuation of the South Learning Centre's services to schools, while other solutions for the funding of such services were explored.

The Council also considered the report by the Chairperson of the Board included in clause 18 of the agenda, and the separately circulated report of the Chief Executive regarding the proposed funding arrangements.

Following the presentation of the submissions, and consideration of the reports by the Chief Executive and the Chairperson of the Spreydon/Heathcote Community Board, it was **resolved** on the motion of Councillor Wells, seconded by Councillor Corbett, that the Council:

- (i) Note the Spreydon/Heathcote Board places considerable value on the operation of the service provided at the South Learning Centre to the schools in the Spreydon/Heathcote ward.
- (ii) Note the steps currently being undertaken to ensure long term sustainability of programmes to schools through the exploration of alternative sources of funding.
- (iii) Support the steps being taken by libraries staff to enable the provision of school programmes on a user-pays basis.
- (iv) Note that the community programmes provided at the Learning Centre were not affected by this decision.
- (v) Ask staff to report back in February on the life-long learning strategy, its timing and the proposed process for its development.
- (vi) Alter resolution 23(b) of the Council's resolution of 21 June 2007 to the effect that, while the Christchurch City Council will not fund the service beyond the end of the 2007 school year (as per its 21/6/07 resolution), the Council advise the community board that its discretionary fund expenditure can be reconsidered in light of the above recommendations.

**8. Working Party**

- (c) The working party arose out of the Council resolution and a desire by the Community Board to allocate funds to continue the existing level of work undertaken by the South Learning Centre ( SLC) with local schools.

**A Cont'd**

The need for additional funds for the SLC developed when funding to the SLC was no longer available to ensure that the learning programmes being undertaken with local schools could continue on a free access basis. The Board decided that it would be guided by the working party as to how funds would be best used and how best to progress this matter.

**9. Working Party meeting – 12 March**

- (d) At a meeting on 12 March 2008 two options were discussed to assist with the continued funding of the SLC, the establishment of a trust and internal applications by Council to various funding bodies. If an external trust was to be established it was considered necessary to locate a community person to act as the champion of the trust.
- (e) Secondly a small mapping/scoping project designed to look at the way forward for the SLC in relation to its work in schools was proposed.

This mapping/scoping project was outlined as follows:

- Mapping – investigate how the work of the SLC loops into the Lifelong Learning Programme plans and other wider plans across the City especially in the technology developing areas.
- Review – current situation in relation to needs in schools, the new curriculum, what level or type of service is required following the success of the programmes provided in the past three years by the SLC.
- Mechanism – what is the best mechanism for supporting the work of the SLC, an outside trust, internal Council structures or a combination of the or some other type of structure/process.

This work would include a review of the type of funding which might be available to support the work of the SLC and what organisations might be interested in partnering the work of the SLC together with all possible sources of external funding for the future work of the Centre. The Mackenzie Trust/Hewlett Packard/Global masters and other funding avenues to be explored.

**CURRENT SITUATION**

**10. Working Party meeting – 25 May**

The following matters among others were discussed at the 25 May Working Party meeting:

Phil Clearwater, Chairperson of the Spreydon/Heathcote Community Board reported on his meeting with John Pritchard from the RUR Trust which is legally established to act as an umbrella trust for organisations. It would be a matter of negotiations with this trust if this trust was to be used to umbrella a trust established to raise funds to enable all children in the compulsory years of schooling to attend learning programmes such as those being offered by the SLC.

Michael Aitken, General Manager Community Services and Phil Clearwater reported back from their meeting with the Chair of the Canterbury Trust. The trust has the ability to support the project as the proposed aims fit within the terms of reference of the Canterbury Trust for education purposes, either an application being made on behalf of the Council or from a trust outside Council.

Carolyn Robertson, Manager Libraries and Information and Pat Street, Programmes and Learning Manager reported on a draft trust proposal, including trust membership (including a member of the Spreydon/Heathcote Community Board), trust purpose and responsibilities and the process necessary to establish the trust. Dorothy Haywood has written a letter outlining her interest in assisting to establish a trust. She is well qualified since she is a retired school principal and has undertaken work at the SLC.

**A Cont'd**

The following further points were noted from the discussion:

- There is a need for mapping/scoping (as reported above) to be undertaken into both current and future school needs in order to establish a broader picture for the SLC and any trust established over the next 10 years. This would fit in with the Life Long Learning strategy of Council.
- The trust should function with SLC as one of its customers, with the SLC delivering ICT services to the schools and the wider community. The Trust could offset the user payers costs and make the service more readily accessible to schools in the local area.
- The terms of reference for the trust should not be directly related to the SLC but be broader supporting ICT learning in the wider community. The name of the trust needs to reflect this broader approach and not identify the SLC in its title. However the aims of the Trust need to support the type of learning that is being provided at the SLC. The purpose needs to be scoped up at the same time as the trust is established.
- It was suggested that Derek Wenmoth, Core Education and Carol Moffit, Education Consultant could be useful people to assist in working on the establishment of the trust.
- It was suggested that the Council could look at some level of support to a trust, such as secretarial and fund application support.
- The employment of Dorothy Haywood as a contractor to assist in establishing the trust and the scoping work to be undertaken through the Libraries and Information Unit in direct liaison with Carolyn Robertson and Pat Street. The trust to be established following guidelines developed from discussions at the working party meetings and that the small scoping exercise be based on a briefing document arising out of discussions at the working party.

**FINANCIAL IMPLICATIONS**

11. The Board has a remaining balance of \$23,462 at 29 May 2008 available for allocation from its Discretionary Fund for 2007/08. However if the Board resolves to accept another reports recommended allocations which to be considered at this 17 June meeting the total available for this project will be \$15,962.

**SOUTH LEARNING CENTRE WORKING PARTY RECOMMENDATIONS TO THE BOARD**

12. That the Spreydon/Heathcote Community Board allocate \$15,962 from the 2007/08 Discretionary Fund to assist with the work of the South Learning Centre with local schools in the following manner:
  - (a) Funds up to \$10,000 be set aside for the establishment of the trust and the initial small scoping exercise. The remainder to be held by the trust for use to assist students from local schools to attend activities/programmes such as those delivered by the SLC.
  - (b) Dorothy Haywood be contracted to set up a trust.
  - (c) Dorothy Haywood be contracted to establish the purpose of the trust in tandem with the establishment of the trust.
  - (d) Dorothy Haywood be contracted to undertake a small mapping/scoping exercise, depending on the availability of funds. This would be undertaken at the same time as the work on establishing the trust.
  - (e) Dorothy Haywood to be contracted to work with Derek Wenmoth and with Carol Moffit as needed.