



## Christchurch City Council

# RICCARTON/WIGRAM COMMUNITY BOARD

## AGENDA

**TUESDAY 1 JULY 2008**

**AT 5PM**

**AT SOCKBURN SERVICE CENTRE**

**IN THE BOARDROOM,  
149 MAIN SOUTH ROAD, CHRISTCHURCH**

**Community Board:** Peter Laloli (Chairperson), Helen Broughton, Jimmy Chen, Beth Dunn, Judy Kirk, Mike Mora and Bob Shearing.

**Community Board Adviser**

Liz Beaven

Telephone: 941-6501

Email: [liz.beaven@ccc.govt.nz](mailto:liz.beaven@ccc.govt.nz)

- PART A - MATTERS REQUIRING A COUNCIL DECISION**
- PART B - REPORTS FOR INFORMATION**
- PART C - DELEGATED DECISIONS**

### INDEX

	<b>PAGE NO</b>	<b>CLAUSE</b>	
<b>PART B</b>	<b>3</b>	<b>1.</b>	<b>APOLOGIES</b>
<b>PART C</b>	<b>3</b>	<b>2.</b>	<b>CONFIRMATION OF MEETING REPORT –17 JUNE 2008</b>
<b>PART B</b>	<b>3</b>	<b>3.</b>	<b>DEPUTATIONS BY APPOINTMENT</b>
<b>PART B</b>	<b>3</b>	<b>4.</b>	<b>PETITIONS</b>
<b>PART B</b>	<b>3</b>	<b>5.</b>	<b>NOTICE OF MOTIONS</b>
<b>PART B</b>	<b>3</b>	<b>6.</b>	<b>CORRESPONDENCE</b>
<b>PART B</b>	<b>3</b>	<b>7.</b>	<b>BRIEFINGS</b>

**We're on the Web!**

[www.ccc.govt.nz/Council/Agendas/](http://www.ccc.govt.nz/Council/Agendas/)

1. 7. 2008

2

<b>PART B</b>	<b>7</b>	<b>8.</b>	<b>APPROVAL OF THE RICCARTON/WIGRAM COMMUNITY BOARD SUBMISSION TO THE COUNCIL ON DRAFT METROPOLITAN SPORTS FACILITIES PLAN AND DRAFT LIBRARIES 2025 FACILITIES PLAN</b>
<b>PART C</b>	<b>10</b>	<b>9.</b>	<b>RICCARTON/WIGRAM ENVIRONMENT COMMITTEE – REPORT OF 5 JUNE 2008</b>
<b>PART C</b>	<b>11</b>	<b>10.</b>	<b>RICCARTON/WIGRAM COMMUNITY SERVICES COMMITTEE – REPORT OF 17 JUNE 2008</b>
<b>PART C</b>	<b>13</b>	<b>11.</b>	<b>RICCARTON/WIGRAM TRANSPORT AND ROADING COMMITTEE – REPORT OF 20 JUNE 2008</b>
<b>PART B</b>	<b>18</b>	<b>12.</b>	<b>COMMUNITY BOARD ADVISER’S REPORT</b>
<b>PART B</b>	<b>18</b>	<b>13.</b>	<b>ELECTED MEMBERS INFORMATION EXCHANGE</b>
<b>PART B</b>	<b>18</b>	<b>14.</b>	<b>QUESTIONS UNDER STANDING ORDERS</b>

1. **APOLOGIES**

2. **CONFIRMATION OF MINUTES – 17 JUNE 2008**

The report of the Board's ordinary meeting of Tuesday 17 June 2008 is **attached**. The Public Excluded section has been **separately circulated** to Board Members.

**STAFF RECOMMENDATION**

That the report of the Board's meeting of 17 June 2008 be confirmed.

3. **DEPUTATIONS BY APPOINTMENT**

4. **PETITIONS**

5. **NOTICE OF MOTION**

6. **CORRESPONDENCE**

7. **BRIEFINGS**

1. 7. 2008

4

14. 8. 2008

**RICCARTON/WIGRAM COMMUNITY BOARD  
17 JUNE 2008**

**Minutes of a meeting of the Riccarton/Wigram Community Board  
held on Tuesday 17 June 2008 at 4.30pm**

**PRESENT:** Peter Laloli (Chairperson), Helen Broughton, Jimmy Chen, Judy Kirk,  
Mike Mora, and Bob Shearing

**APOLOGIES:** Apologies for absence were received and accepted from Beth Dunn.  
  
Helen Broughton arrived at 4.45pm and was absent for clauses 1  
and 2.

The Board reports that:

**PART B - REPORTS FOR INFORMATION**

**1. DEPUTATIONS BY APPOINTMENT**

Nil.

**2. PETITIONS**

Nil.

**3. NOTICE OF MOTIONS**

Nil.

**4. CORRESPONDENCE**

The Board **received** a letter from Annabelle Carey thanking the Board for a Youth Development Grant.

**5. BRIEFINGS**

Nil.

**6. ELECTED MEMBERS INFORMATION EXCHANGE**

The Board were advised that the Board's submission on the Council's Draft Libraries Facilities Plan will be heard on Monday 23 June at 9.30am.

Board members advised that they had recently attended:

- Age Quake Seminar
- Hornby Toastmasters Opening Night

The Board discussed an offer from Branston Intermediate School to allow their school pool to be used by the public during the 2008 Christmas break. The Board requested staff to work with the school.

1. 7. 2008

5

**7. ELECTED MEMBERS QUESTIONS**

Nil.

**PART C - REPORT ON DELEGATED DECISIONS  
TAKEN BY THE BOARD**

**8. CONFIRMATION OF MEETING REPORT – 3 JUNE 2008**

The Board **resolved** that the report of its meeting held on Tuesday 3 June 2008 be confirmed as a true and accurate record of that meeting.

**9. APPLICATION TO THE RICCARTON/WIGRAM COMMUNITY BOARD'S 2007/08 DISCRETIONARY FUND – PURCHASE OF ELLERSLIE FLOWER SHOW TICKETS**

The Board considered a report seeking funding from the Board's 2007/08 Discretionary Fund for the purchase of \$715 worth of "Early Bird" 2009 Ellerslie Flower Show tickets by the Riccarton/Wigram Community Board to distribute to residents of the Riccarton/Wigram Ward.

The Board **agreed** to set criteria for the distribution of the tickets at a later date.

The Board **resolved**:

- (a) That the Board purchase "early bird" tickets to the 2009 Ellerslie Flower Show to the value of \$715.00.
- (b) That a criteria for the distribution of the purchased "early bird" 2009 Ellerslie Flower Show to ensure a fair and equitable distribution.

**10. APPLICATION TO THE RICCARTON/WIGRAM COMMUNITY BOARD'S 2008/09 DISCRETIONARY FUND – SAM RAYNER STEELE**

The Board considered a report seeking approval for an application for funding from the Community Board's 2008/09 Discretionary Fund.

The Board **resolved** that to grant \$500 from the Board's 2008/09 Discretionary Fund to Sam Rayner Steele as a contribution to his costs to attend the World Track Cycling Championships in South Africa during July 2008.

**11. RESOLUTION TO EXCLUDE THE PUBLIC**

The Board **resolved** that the draft resolution to exclude the public set out on page 30 of the agenda be adopted.

The meeting concluded at 5.25pm.

**CONSIDERED THIS 1<sup>ST</sup> DAY OF JULY 2008**

**PETER LALOLI  
CHAIRPERSON**

8. **APPROVAL OF THE RICCARTON/WIGRAM COMMUNITY BOARD SUBMISSION TO THE COUNCIL ON DRAFT METROPOLITAN SPORTS FACILITIES PLAN AND DRAFT LIBRARIES 2025 FACILITIES PLAN**



**PURPOSE OF REPORT**

The Board held an informal meeting on 6 May 2008 and 13 May 2008 to consider its submissions to the Council on the Council's Draft Metropolitan Sports Facilities Plan and Draft Libraries 2025 Facilities Plan.

The **attached** submissions were submitted and ratification of that action is requested.

**STAFF RECOMMENDATION**

That the Board consider the Riccarton/Wigram Community Board Submissions to the Council on the Council's Draft Metropolitan Sports Facilities Plan and Draft Libraries 2025 Facilities Plan (**Attachments 1 and 2**) and the action of the Board in forwarding to the Council be approved.

**SUBMISSION OF THE  
RICCARTON/WIGRAM COMMUNITY BOARD**

**ON**

**THE CHRISTCHURCH CITY COUNCIL'S DRAFT METROPOLITAN SPORTS FACILITIES PLAN**

The Riccarton/Wigram Community Board (the Board) makes the following submissions on the Draft Metropolitan Sports Facilities Plan – April 2008 (the Plan).

The Board wish to be heard in support of its submission.

The Board would like to submit:

1. In making this submission the Board focussed on the Plan's implications for the metropolitan facilities located within the Riccarton/Wigram ward and facilities immediately adjoining the Board's area.
2. That the Plan's goal should be *To develop a plan to enable Council to prioritise the provision of metropolitan sports facilities for the next 20 years and beyond*. The Plan should be regarded as a living document.
3. That the Board supports the direction of the Plan and supports Council to work closely with sporting organisations that may have their own visions for facilities and use existing and/or future joint ventures. The Board also wishes the Christchurch City Council to work with neighbouring local authorities to encourage regional use of facilities of each local authorities sporting facilities.
4. The Board supports the Plan's inclusion of having multi use facilities, hubbing, all weather facilities and the ability to change in line with new sporting trends.
5. The Board request that the Plan dovetails into other City Council strategies that impact on Riccarton/Wigram i.e. South West Area Plan, Aquatic Facilities Plan, UDS, etc. It was been identified that there is a lack of recreational/sporting facilities within the south west area.
6. Denton Park – Hornby has been known as the home of cycling and the Board would like that tradition continued and support the installation of a multi use facility incorporating a covered velodrome and aqua facility. The Board encourages staff to look for opportunities to collaborate with existing business to provide new facilities, ie Hornby Workingmen's Club, Hornby Mal
7. It is recognised that Halswell is a major urban growth area and currently the area's sporting needs are not being met. The Board believes that the area's lack of access to local sporting facilities needs to be addressed through the plan.
8. The Board see the relocation of the Christchurch Kart Club as a high priority and it would support the city's motor sports being based at one location, i.e. Ruapuna Park if the noise issues can be satisfactorily resolved for the Templeton residents.
9. Support is given to further investigation into a flat water facility within the Henderson's Basin area.
10. The shifting of Canterbury Netball to a more suitable site is supported.

Thank you for the opportunity to comment on the Draft Metropolitan Sports Facilities Plan – April 2008.

*For the Riccarton/Wigram Community Board*



**PETER LALOLI**  
**CHAIRPERSON**  
30 May 2008

1. 7. 2008

8

**SUBMISSION OF THE  
RICCARTON/WIGRAM COMMUNITY BOARD**

**ON**

**THE CHRISTCHURCH CITY COUNCIL'S DRAFT LIBRARIES 2025 FACILITIES PLAN**

The Riccarton/Wigram Community Board (the Board) makes the following submissions on the Draft Libraries 2025 Facilities Plan – April 2008.

The Board wishes to be heard in support of its submission.

The Board would like to submit.

1. **Halswell Library** – that the Council acquire land for the expansion of the Halswell Library in the Milns Road/Halswell Road area.
2. **Volunteer Libraries** – that the status of volunteer libraries be fully considered and confirmed in the overall Libraries Facilities Plan.
3. **Riccarton Town** – The Board support a solid library service within the Riccarton Town area.
4. **Mobile Library Service** - The Board supports the continued use of the mobile library, as it is an important service in the community. It supports its continuation.
5. **General** - The Board supports the general focus of the draft plan and supports the overall strategy

Thank you for the opportunity to comment on the Draft Libraries 2025 Facilities Plan – April 2008.

*For the Riccarton/Wigram Community Board*



**PETER LALOLI  
CHAIRPERSON**

30 May 2008



**9. RICCARTON/WIGRAM ENVIRONMENT COMMITTEE – REPORT OF 5 JUNE 2008**

<b>General Manager responsible:</b>	General Manager Regulation and Democracy Services, Peter Mitchell, DDI 941 8462
<b>Officer responsible:</b>	Democracy Services Manager
<b>Author:</b>	Liz Beaven, Community Board Adviser

**PURPOSE OF REPORT**

The purpose of this report is to submit the outcomes of the Environment Committee meeting held on Thursday 5 June 2008.

The meeting was attended by Peter Laloli (Chairperson), Judy Kirk, Beth Dunn, Mike Mora, and Bob Shearing.

An apology was received and accepted from Helen Broughton and an apology for lateness was received and accepted from Jimmy Chen.

**1. DEPUTATION BY APPOINTMENT**

Mr Gordon Scandrett, Mrs Heather Scandrett, Cynthia Ellis, and Annette Downey, residents of Jamell Place, discussed issues with Silver Birch street trees outside Mr and Mrs Scandrett's residence (12 Jamell Place).

The Committee requested a report after a residents' consultation survey on the removal of the Silver Birch trees outside 12 Jamell Place has been completed.

**2. PETITIONS**

Nil

**3. BRIEFINGS**

Nil

**4. ELECTED MEMBERS INFORMATION EXCHANGE**

The Committee members were updated on the installation of fitness equipment in Wycola Park.

The Committee requested that the RSPCA be invited to discuss the society's scope of work within the Riccarton/Wigram ward.

Discussion was held on the Silver Birch trees in the vicinity of the Hornby Library. The Committee were informed that a request for service will be lodged to investigate the removal of the trees.

The meeting finished at 5.55pm.

## 10. RICCARTON/WIGRAM COMMUNITY SERVICES COMMITTEE – REPORT OF 17 JUNE 2008

<b>General Manager responsible:</b>	General Manager Regulation and Democracy Services, DDI 941 8462
<b>Officer responsible:</b>	Democracy Services Manager
<b>Author:</b>	Liz Beaven, Community Board Adviser

**PURPOSE OF REPORT**

The purpose of this report is to submit the outcomes of the Community Services Committee meeting held on Tuesday 17 June 2008.

The meeting was attended by Judy Kirk (Chairperson), Helen Broughton, Jimmy Chen, Peter Laloli, Mike Mora, and Bob Shearing.

An apology was received and accepted from Beth Dunn.

**1. DEPUTATION BY APPOINTMENT**

Nil

**2. PETITIONS**

Nil

**3. BRIEFINGS**

Nil

**4. 2008/2009 RICCARTON WIGRAM YOUTH DEVELOPMENT SCHEME ESTABLISHMENT**

The Committee considered a report to seek the establishment of the Riccarton/Wigram Community Board 2008/2009 Youth Development Scheme from the Board's Discretionary Fund.

The Committee's recommendation on this matter is recorded under clauses 6.1 of this report.

**5. APPLICATION TO THE RICCARTON WIGRAM COMMUNITY BOARDS 2008/2009 DISCRETIONARY FUND – HALSWELL RUGBY LEAGUE CLUB**

The Committee considered a report seeking funding of \$28,580 from the Community Board's 2008/09 Discretionary Fund for the installation of additional floodlighting, including the erection of six new poles, on Halswell Domain.

The Committee's recommendation on this matter is recorded under clauses 6.2 of this report.

**6. COMMITTEE RECOMMENDATIONS****6.1 2008/2009 RICCARTON WIGRAM YOUTH DEVELOPMENT SCHEME ESTABLISHMENT**

That Riccarton/Wigram Community Board:

(a) approve the establishment of the 2008/09 Youth Development Scheme and operated as outlined in the report with the following amendments:

- Paragraph 7 to read: *...that individuals only be allowed to apply once per financial year.*
- Paragraph 8, second bullet point to read: *the level of excellence/commitment at which the group or individual is performing in their chosen field.*
- Paragraph 8, third bullet point to be deleted.

**10 Cont'd**

- (b) That \$10,000 be transferred from the Riccarton/Wigram Community Board's 2008/09 Discretionary Fund to the Board's 2008/2009 Youth Development Scheme.
- (c) That the Riccarton/Wigram Community Services Committee have the delegated authority to allocate the 2008/2009 Riccarton Wigram Youth Development Scheme Fund.

**6.2 APPLICATION TO THE RICCARTON WIGRAM COMMUNITY BOARDS 2008/2009 DISCRETIONARY FUND – HALSWELL RUGBY LEAGUE CLUB**

That Riccarton/Wigram Community Board give approval to the funding application of Halswell Rugby League Club and make a contribution of \$15,000 from the Board's 2008/2009 Discretionary Fund towards costs of installation of additional floodlighting, providing that the floodlights are installed subject to the necessary consents and conditions of the approval given on 18 December 2007.

The meeting finished at 6.05pm.

11. **RICCARTON/WIGRAM TRANSPORT AND ROADING COMMITTEE – REPORT OF 20 JUNE 2008**

<b>General Manager responsible:</b>	General Manager Regulation and Democracy Services, Peter Mitchell, DDI 941 8462
<b>Officer responsible:</b>	Democracy Services Manager
<b>Author:</b>	Liz Beaven, Community Board Adviser

**PURPOSE OF REPORT**

The purpose of this report is to submit the outcomes of the Transport and Roading Committee meeting held on Friday 20 June 2008.

The meeting was attended by Mike Mora (Chairperson), Helen Broughton, Jimmy Chen, Judy Kirk, Peter Laloli, and Bob Shearing.

Apologies were received and accepted from Beth Dunn. Helen Broughton left the meeting and was absent for part of Clause 9.

**1. DEPUTATIONS BY APPOINTMENT**

The Committee received deputations in relation to Marsham Road and Kintyre Drive – Installation of “Stop”, Cycle Lane and No Stopping Restriction from:

- Dianne White, resident of Kintyre Drive
- Geoff Moss, resident of Kintyre Drive

D White and G Moss voiced their concerns on the proposed layout of the intersection. Ms White and Mr Moss suggested the installation of a roundabout at the Kintyre/Neathwest intersection.

The Committee’s recommendation on this matter is recorded under clause 4 of this report.

**2. CORRESPONDENCE**

The Committee received the following correspondence:

- (a) an e-mail from Mr G Hodgson, resident of Kintyre Drive, in relation to the proposed alterations to the Kintyre Drive and Neathwest Avenue Intersection.
- (b) an e-mail from Mr Tony Knighton, Scarlett-Hydraulics NZ Limited, on the condition of Waterloo Road and the lack of consultation in the recent road works.

**3. BRIEFINGS**

Nil.

**4. MARSHAM ROAD AND KINTYRE DRIVE – INSTALLATION OF “STOP”, CYCLE LANE AND NO STOPPING RESTRICTION**

The Committee considered a report to approve the installation of no stopping restrictions, cycle land along Marsham Road, Kintyre Drive and Neathwest Avenue and to review the future traffic control priorities at the intersection of Neathwest Avenue/Kintyre Drive as a result of changing traffic conditions.

Mike Mora and Jimmy Chen declared an interest in this clause and took no part in the discussion or voting thereon.

The Committee’s recommendation on this matter is recorded under clause 9.1 of this report.

**11 Cont'd**

**5. MANDEVILLE STREET PROPOSED "NO STOPPING" RESTRICTION**

The Committee considered a report to approve the installation of "No Stopping" restrictions on Mandeville Street within the cycle lane.

The Committee's recommendation on this matter is recorded under clause 9.2 of this report.

**6. PEER STREET PROPOSED PARKING RESTRICTION**

The Committee considered a report to approve the installation of 5 minute parking restriction operating during the hours of 8am to 9am and 2.30pm to 3.30pm on school days on the west side of Peer Street, north of Yaldhurst Road, Upper Riccarton.

The Committee's recommendation on this matter is recorded under clause 9.3 of this report.

**7. PICTON AVENUE KERB AND CHANNEL RENEWAL, PEVERAL STREET TO BLENHEIM ROAD**

The Committee considered a report to approve the Picton Avenue (Peveral Street to Blenheim Road) Kerb and Channel Renewal Project to proceed to final design, tender, and construction.

The Committee's recommendation on this matter is recorded under clause 9.4 of this report.

**8. UPDATE ON CURRENT TRANSPORT ISSUES**

The Committee discussed the format of the revised "Outstanding Traffic Issues Memo". Andrew Hensley and Malcolm Taylor were thanked for the many hours spent on reviewing the document. The Committee agreed to the new format.

The Committee requested that a quarterly report on the Riccarton Ward Capital Works projects be available to Committee meetings.

Peter Goodwin, NZ Toad Transport Association, and Rod Auton, New Zealand Trucking Association, discussed issues in relation to heavy traffic within the ward boundaries. The Committee welcomed a continued relationship with the two associations on common traffic issues.

The Committee requested that the information on the placement of school speed restrictions be sent to the petition signatories of the South Hornby School which requested a 40km speed restriction outside the school.

**9. COMMITTEE RECOMMENDATIONS**

**9.1 MARSHAM ROAD AND KINTYRE DRIVE – INSTALLATION OF "STOP", CYCLE LANE AND NO STOPPING RESTRICTION**

That the Board:

- (a) approve that the report lay on the table until a full consultation process has been undertaken and reported back to the Roading and Traffic Committee.
- (b) request staff that no further work be undertaken at Masham and Kintyre Drive intersection except to only ensure intersection safety.
- (c) that further information is requested to be presented to the Board's 1 July 2008 meeting.

11 Cont'd

9.2 **MANDEVILLE STREET PROPOSED "NO STOPPING" RESTRICTION**

That the Board:

- (a) approve the parking of vehicles (within the cycle lane) are prohibited at any time on the eastern side of Mandeville Street commencing at a point 221 metres from its intersection with Leslie Hills Drive and extending in a southerly direction for a distance of 70 metres be revoked.
- (b) approve the parking of vehicles (within the cycle lane) be prohibited at any time on the eastern side of Mandeville Street commencing at a point 41 metres from its intersection with Leslie Hills Drive and extending in a southerly direction for a distance of 250 metres.

9.3 **PEER STREET PROPOSED PARKING RESTRICTION**

That the Board approve the parking of vehicles be restricted to a maximum period of 5 minutes, from 8am to 9am and 2.30pm to 3.30pm, on school days, on the west side of Peer Street commencing at a point 268 metres from its intersection with Yaldhurst Road and extending in a northerly direction for a distance of 23 metres.

9.4 **PICTON AVENUE KERB AND CHANNEL RENEWAL, PEVERAL STREET TO BLENHEIM ROAD**

That the Board:

- (a) Approve the Picton Avenue Kerb and Channel Renewal (Peveral Street to Blenheim Road) project to proceed to detailed design, tender and construction, as shown on the plans at Attachment 1.
- (b) Approve the following traffic and parking restrictions:
  - (i) That the stopping of vehicles be prohibited at any time on the eastern side of Picton Avenue commencing at the extension of the Blenheim Road kerb line on the northern side and extending for 24 metres in a Northerly direction.
  - (ii) That the stopping of vehicles be prohibited at any time on the western side of Picton Avenue commencing at the extension of the Blenheim Road kerb line on the Northern side and extending for 23 metres in a Northerly direction.
  - (iii) That the stopping of vehicles be prohibited at any time on the eastern side of Picton Avenue commencing 75 metres north of the extension of the Blenheim Road kerb line on the Northern side and extending for 41 metres in a northerly direction.
  - (iv) That the stopping of vehicles be prohibited at any time on the western side of Picton Avenue commencing at the extension of the Lyndon Street kerb line on the Southern side and extending for 16 metres in a southerly direction.
  - (v) That the stopping of vehicles be prohibited at any time on the southern side of Lyndon Street commencing at the extension of the Picton Avenue kerb line on the Western side and extending for 16 metres in a Westerly direction.
  - (vi) That the stopping of vehicles be prohibited at any time on the northern side of Lyndon Street commencing at the extension of the Picton Avenue kerb line on the Western side and extending for 16 metres in a Westerly direction.

11 Cont'd

- (vii) That the stopping of vehicles be prohibited at any time on the Western side of Picton Avenue commencing at the extension of the Lyndon Street kerb line on the Northern side and extending for 20 metres in a Northerly direction.
- (viii) That the stopping of vehicles be prohibited at any time on the eastern side of Picton Avenue commencing 197 metres north of the extension of the Blenheim Road kerb line on the Northern side and extending for 36 metres in a Northerly direction.
- (ix) That the stopping of vehicles be prohibited at any time on the western side of Picton Avenue commencing at the extension of the Elizabeth Street kerb line on the Southern side and extending for 14 metres in a Southerly direction.
- (x) That the stopping of vehicles be prohibited at any time on the southern side of Elizabeth Street commencing at the extension of the Picton Avenue kerb line on the Western side and extending for 18 metres in a Westerly direction.
- (xi) That the stopping of vehicles be prohibited at any time on the Northern side of Elizabeth Street commencing at the extension of the Picton Avenue kerb line on the Western side and extending for 14 metres in a westerly direction.
- (xii) That the stopping of vehicles be prohibited at any time on the western side of Picton Avenue commencing at the extension of the Elizabeth Street kerb line on the Northern side and extending for 16 metres in a Northerly direction.
- (xiii) That the stopping of vehicles be prohibited at any time on the eastern side of Picton Avenue commencing at the extension of the Burden Street kerb line on the Southern side and extending for 27 metres in a southerly direction.
- (xiv) That the stopping of vehicles be prohibited at any time on the western side of Picton Avenue commencing at of the extension of the Burden Street kerb line on the Southern side and extending for 15 metres in a southerly direction.
- (xv) That the stopping of vehicles be prohibited at any time on the southern side of Burdale Street commencing at the extension of the Picton Avenue kerb line on the Western side and extending for 17 metres in a westerly direction.
- (xvi) That the stopping of vehicles be prohibited at any time on the Northern side of Burdale Street commencing at the extension of the Picton Avenue kerb line on the Western side and extending for 17 metres in a Westerly direction.
- (xvii) That the stopping of vehicles be prohibited at any time on the Southern side of Burdale Street commencing at the extension of the Picton Avenue kerb line on the Eastern side and extending for 15 metres in a easterly direction.
- (xviii) That the stopping of vehicles be prohibited at any time on the Northern side of Burdale Street commencing at the extension of the Picton Avenue kerb line on the Eastern side and extending for 15 metres in a easterly direction.
- (ixx) That the stopping of vehicles be prohibited at any time on the eastern side of Picton Avenue commencing at the extension of the Burdale Street kerb line on the Northern side and extending for 12 metres in a northerly direction.

**11 Cont'd**

- (xx) That the stopping of vehicles be prohibited at any time on the Western side of Picton Avenue commencing at the extension of the Burdale Street kerb line on the Northern side and extending for 31 metres in a northerly direction.
- (xxi) That the stopping of vehicles be prohibited at any time on the Eastern side of Picton Avenue commencing 59 metres north of the extension of the Burdale Street kerb line on the Northern side and extending for 148 metres in a Northerly direction.
- (xxi) That the stopping of vehicles be prohibited at any time on the Western side of Picton Avenue commencing at the extension of the Peveral Street kerb line on the Southern side and extending for 23 metres in a southerly direction.
- (xxii) That the stopping of vehicles be prohibited at any time on the Southern side of Peveral Street commencing at the extension of the Picton Avenue kerb line on the Western side and extending for 11 metres in a Westerly direction.

The meeting concluded at 10.32am.



**1. 7. 2008**

17

- 12. COMMUNITY BOARD ADVISER'S REPORT**
- 13. ELECTED MEMBERS INFORMATION EXCHANGE**
- 14. QUESTIONS UNDER STANDING ORDERS**

**Christchurch City Council**

**RICCARTON/WIGRAM COMMUNITY BOARD  
AGENDA**

**SUPPLEMENTARY ITEM**

**TUESDAY 1 JULY 2008**

**15. CONSIDERATION OF SUPPLEMENTARY ITEM  
(A) KINTYRE DRIVE NEATHWEST AVENUE MASHAM ROAD IMPROVEMENTS**



Reason (in terms of Section 46a(7) of the Local Government Official Information and Meetings Act 1987): The issue follows on from a report to the Transport and Roothing Committee and a deputation from residents and there is a need to respond to their concerns. The Committee asked that it lay on the table.

**RECOMMENDATION**

That the Board resolve to consider the supplementary report, as detailed above.

**(A) KINTYRE DRIVE NEATHWEST AVENUE MASHAM ROAD IMPROVEMENTS**

<b>General Manager responsible:</b>	General Manager City Environment, Jane Parfitt
<b>Officer responsible:</b>	Asset and Network Planning Manager
<b>Author:</b>	Peter Atkinson, Transport Planner

**PURPOSE OF REPORT**

1. The purpose of this report is to inform the Board of the background to the residential zoning and to advise of a course of action as a result of public submissions to works that have commenced at the intersections of Masham Road and Kintyre Drive, and Kintyre Drive and Neathwest Avenue.

**EXECUTIVE SUMMARY**

2. The subdivision development of the Masham Block, which is generally that area between Masham Road, Buchanans Road and Yaldhurst Road, is as a consequence of an application to rezone the land and the Council decision not to support it. This decision was appealed and a decision to develop the land was given by the Environment Court on the 21 August 2006. The decision, an 83 page of the decision document included the following clause on the intersections:

*"Alteration to road layout for safe access to and from Masham Road, Kintyre Drive, Neathwest Avenue and Buchanans Road*

**A Cont'd**

(a) *The extent and cost of works and land required to alter the existing road layout to accommodate the safe and efficient movement of all road users along and through these roads and intersections.*

(i) *The Masham Road/Kintyre Drive intersection;*

(ii) *Kintyre Drive;*

(iii) *The Kintyre Drive, Neathwest Avenue intersection;*

(iv) *Neathwest Avenue;”*

*The Environment Court decision was incorporated into the City Plan and in particular under the City Plan appendix 3n.1 outlines the key structuring elements and appendix 3q has diagrams setting out the movement network for roads and cycle routes*

3. As a consequence of public submissions and concerns expressed to different Board Members about the works on Kintyre Drive, it is now proposed to carry out these improvement works in Kintyre Drive in two stages, as outlined below,

- (a) Stage 1;

**Generally the works associated with the Masham Road - Kintyre Drive intersection.**

These works are required in order to permit the developer of the new Masham development to safely gain access to the subdivision site as well as improving access and egress for local residents. The proposals provide for the provision of a deceleration lane on the State Highway, the provision of a cycle lane and an additional turning lane onto Kintyre Drive. These works require the modifications and changes to the traffic island and road humps in Kintyre Drive to allow two approach lanes to the State Highway. Also to be included are partial changes to the intersection of Kintyre Drive / Neathwest Avenue intersection to allow new kerblines and landscaping to be completed at the cost of the developer by the developer.

- (b) Stage 2

**Generally the works associated with the Intersection of Kintyre Drive and Neathwest Avenue**

This includes the works associated with the change of priority at the Kintyre Drive / Neathwest Avenue intersection and the provision of cycle lanes. These works can be planned with the rate of development of the new subdivision site, which will influence future traffic patterns. Included with these works is the provision of cycle lanes.

- 4 The works on the existing road reserve do require the approval of the Board. The provision of cycle lanes, the extent of no stopping, together with support for the works on the State Highway requires the separate approval of both the Board and the Council.

5. Two issues are apparent as a result of the consultation with residents. They are:

- (a) An appreciation of both the extent and nature of the proposed subdivision development.

The proposed new residential development is to be centred on a main spine road running between Buchanans Road and Yaldhurst Road where it is proposed to introduce a roundabout or other similar traffic control at both these junctions. The connections described from the Enterprise subdivision to the other parts of the wider subdivision is a requirement of the Environment Court decision to ensure integration between the existing and new communities. Until such time as these connections are provided, the development on the Enterprise block, which will have direct access from Kintyre Drive / Neathwest Avenue, is limited to 200 houses. Residents have not generally been made aware of the alternative connections of these future roads. In addition there is some commercial development planned within the subdivision.

**A Cont'd**

- (b) The provision of the long term method of control at the junction of Kintyre Drive and Neathwest Avenue.

The second issue, was the proposed alternative methods of control for the Kintyre Drive / Neathwest Avenue intersection. A variety of alternatives have been discussed and considered but each of these has presented particular issues or problems. The aim of the design as outlined in the initial report to the Committee provided for what was considered the safest long term solution which reflected the future changes to the major movements of traffic through the intersection and the ability to direct them safely. The overall traffic environment on Neathwest Avenue at full development is unlikely to result in major capacity problems at the this intersection. Overall delays are likely to be low, so the change in priority should have only a minor effect on travel times for residents in Kintyre Drive, but is important for safety.

- With a roundabout, there is limited ability to provide equal deflection to each of the movements and to adequately provide for safe movements and access to private driveways
- Keeping the current status quo in terms of priority would not lead to an effective traffic management system as traffic movement's increase, with the majority of the traffic wanting to continue straight on at the intersection
- To provide a standard treatment reflecting the unique character of the locality.

The residents however have been correct in expressing their concerns as there may be a more appropriate time to introduce priority changes to the intersection. While the priority changes will still be warranted in the long term as and when the subdivision development occurs. It is proposed that the intersection design for the short to medium term be such that it provides for the current priority hierarchy. This amendment to the proposals would be subject to a safety audit to ensure that the residents are provided with a safe intersection. It is further proposed that the intersection be monitored and the future priority changes be made as different traffic patterns occur.

**FINANCIAL IMPLICATIONS**

6. Under the decision of the Environment Court, the initial modifications to the two intersections are associated with the development of the adjacent land and therefore at the cost to the new development. However, there is the potential for claims to the Council if there is unnecessary delay to the proposed works.

**Do the Recommendations of this Report Align with 2006-16 LTCCP budgets?**

- 7 The works are not associated with the LTCCP funding categories

**LEGAL CONSIDERATIONS**

8. The works on the road are generally a Council responsibility and the approvals for work on local roads have been delegated to the Community Board. The Council interest has been determined by the Environment Court decision and the eventual need to include cycle lanes once significant development has occurred.
- 9 A separate report to the Board will be required when the traffic conditions at the intersection of Kintyre Drive and Neathwest Road significantly alter and there is a need to change the existing intersection priorities or to enable the intersection to operate safely.

**ALIGNMENT WITH LTCCP AND ACTIVITY MANAGEMENT PLANS**

10. The report is in alignment with Council core function to manage the roading network.

**A Cont'd**

**ALIGNMENT WITH STRATEGIES**

11. The nature of the work proposed at this intersection is in accordance with the strategies to safely manage the roading network.

**CONSULTATION FULFILMENT**

12. This report is in direct response to the consultation process and the feedback form residents.

**STAFF RECOMMENDATION**

It is recommended that the Board:

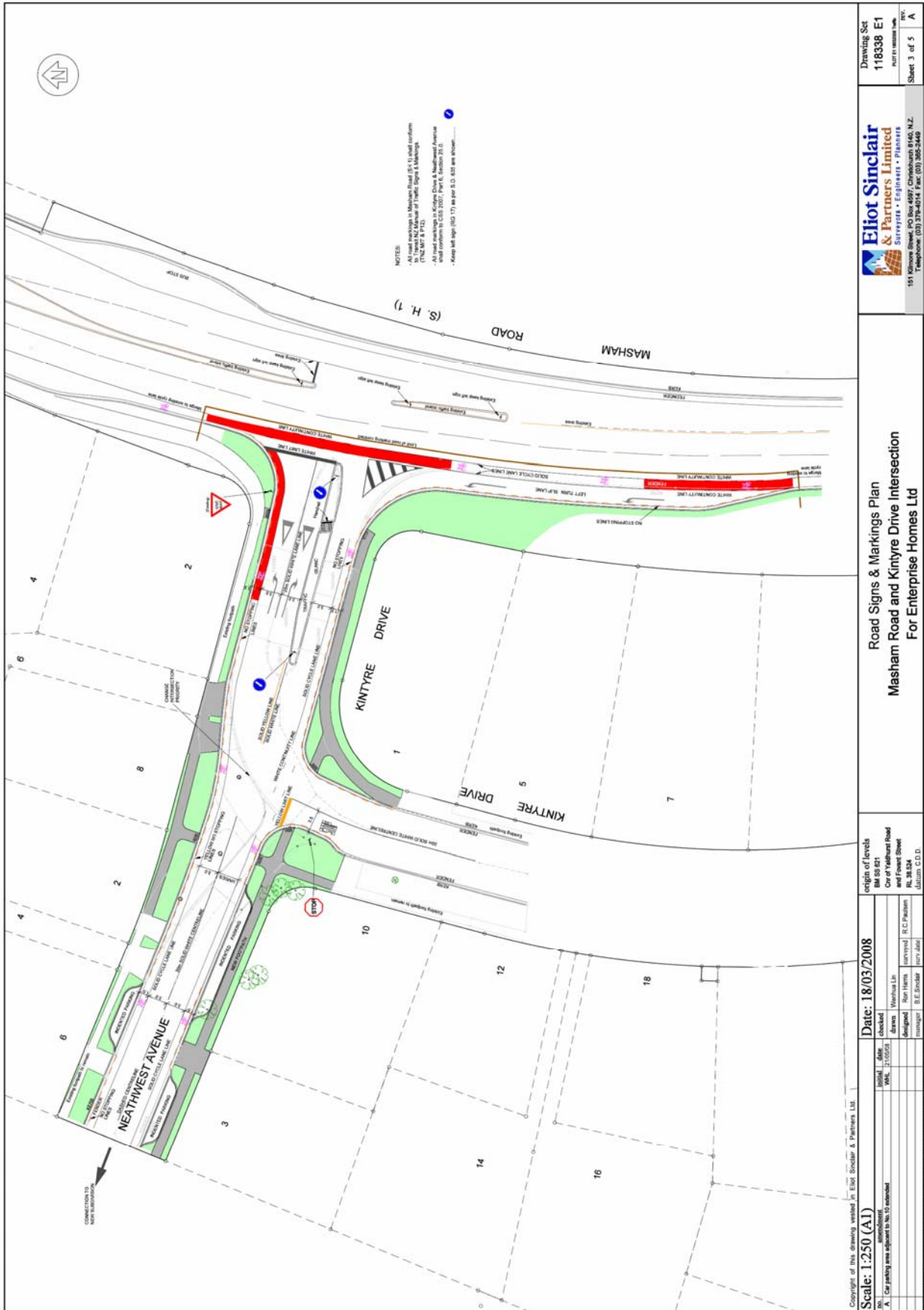
- (a) Provide an information leaflet to the residents of Kintyre Drive and Neathwest Avenue informing them of the extent and nature of the subdivision development, its future connection to the existing roading network and possible timings of the development.
- (b) That the changes to the roadways in the locality take place in two stages:

**Stage 1**

1. The layout of the intersection of the Kintyre Drive and Masham Drive is laid out generally in accordance with the attached plan.
2. Recommend to the Council that they support the submission to Transit NZ that the provision of cycle lanes and no stopping parking restriction as illustrated in the attached plan be implemented.
3. That the intersection of Kintyre Drive / Neathwest Avenue be constructed to its final formation (see plan attached) with any works necessary to safely maintain the existing priority at this stage.
4. That the temporary delay to the proposed works is uplifted to allow the works at the Kintyre Drive / Masham Road to continue.

**Stage II**

1. That the Board request that traffic monitoring of the intersection traffic flows is undertaken as the subdivision development occurs, and as the traffic patterns change, to enable the priority arrangements at the intersection to be reviewed, in conjunction with local residents, before being changed to its final formation.
2. That the Board reconsider the need for cycle lanes in Neathwest Avenue following completion of the construction of the balance of the street.



<p><b>Eliot Sinclair &amp; Partners Limited</b>                  Surveys • Engineers • Planners</p> <p>151 Kilmorie Street, PO Box 4997, Christchurch 8140, N.Z.                  Telephone: (03) 7384614 Fax: (03) 365-5449</p>		<p>Drawing Set                  118338 E1</p> <p>Sheet 3 of 5</p>	
<p><b>Road Signs &amp; Markings Plan</b>                  Masham Road and Kintyre Drive Intersection                  For Enterprise Homes Ltd</p>			
<p>Scale: 1:250 (A1)</p> <p>Date: 18/03/2008</p>		<p>origin of levels                  BM 55 821                  One of Marlborough Road                  and Forest Street                  RL 38.824                  datum: C.C.D.</p>	
<p>Drawn: [ ]                  Checked: [ ]                  Approved: [ ]</p>	<p>Designed: [ ]                  Checked: [ ]                  Approved: [ ]</p>	<p>Drawn: [ ]                  Checked: [ ]                  Approved: [ ]</p>	<p>Designed: [ ]                  Checked: [ ]                  Approved: [ ]</p>