

15. VICTORIA STREET - P10 PARKING RESTRICTION

Officer responsible Network Operations Team Leader	Author Andrew Hensley, Passenger Transport, DDI 941-8516
--	--

The purpose of this report is to seek the approval of the Committee for the installation of two P10 'At Any Time' parking spaces on Victoria Street opposite the Casino.

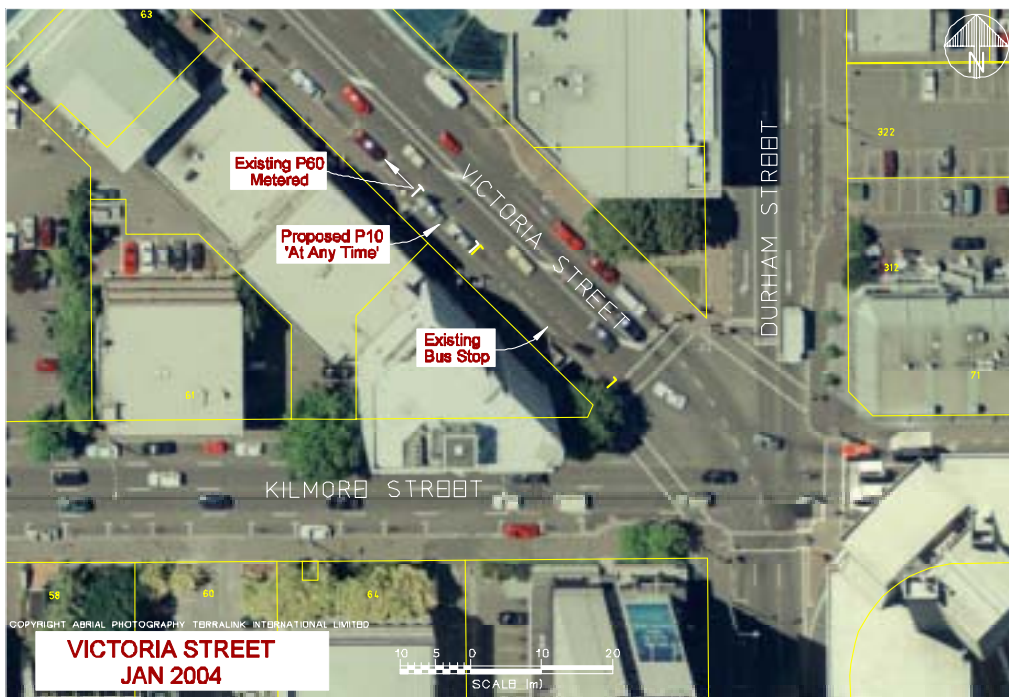
BACKGROUND

A request has been received from the property manager of 53-59 Victoria Street, on behalf of the tenants, to provide short-term car parking for customers wishing to access the businesses occupying these premises. In recent years the tenants of the building have changed. It is now occupied by four restaurants which also cater for takeaways, a 24 convenience store and a money machine. It is felt that the length of existing P60 parking restriction is no longer appropriate to serve the changing needs of the area.

There are limited short-term parking opportunities in the area. As a result, customers have apparently been experiencing difficulties and at times double parking or parking on the adjoining bus stop, resulting in congestion on Victoria Street.

PROPOSAL

It is proposed to remove two P60 parking metered spaces adjoining the bus stop and replace these with two P10 'At Any Time' parking spaces. One parking space is outside the Jolly Poacher and the other is outside 53 Victoria Street.



The Council's Parking Strategy provides guidance for the allocation of kerbside parking. For business areas, Policy 6G On-Street Parking refers:

"To use a mix of pricing regimes, time and parking restrictions to encourage the turn over of on street parking in areas of high demand."

The Strategy suggests that kerb-space parking priority be given as follows:

"To allocate kerb space where demand exceeds supply, in general accordance with the Commercial/Retail Centres table below."

	Commercial/Retail Centres (Including Central City) Parking Priority
1.	Bus stops
2.	Taxi, limousine and shuttle services
3.	Loading zones
4.	Parking for people with disabilities
5.	Short-stay private vehicle parking for business and retail needs
6.	Residents' parking
7.	Commuter parking

CONSULTATION

The request has come from the property manager of 53-59 Victoria Street on behalf of the owner and ground floor tenants. The manager of the Jolly Poacher is not agreeable to the proposal, as after hours staff will not be able to park their vehicles within sight of the workplace.

The Parking Operations Team Leader is agreeable to this proposal.

Staff

- Recommendation:**
1. That two P60 parking spaces on the western side of Victoria Street commencing at a point 37 metres from its intersection with Kilmore Street and extending in a northerly direction for a distance of 11.5 metres be deleted.
 2. That two P10 'At Any Time' parking spaces be installed on the western side of Victoria Street commencing at a point 37 metres from its intersection with Kilmore Street and extending in a northerly direction for a distance of 11.5 metres.

Chairman's

- Recommendation:** That the above recommendation be adopted.