



11. SHIRLEY/PALMS YOUTH PROJECT

Officer responsible Community Advocate	Author Bruce Meder, Michael McNabb, Community Development Advisers
Corporate Plan Output: 6.1.text.47	

The purpose of this report is to set-up a structure and process for progressing responses to a perceived community need in the Shirley/Palms area.

BACKGROUND

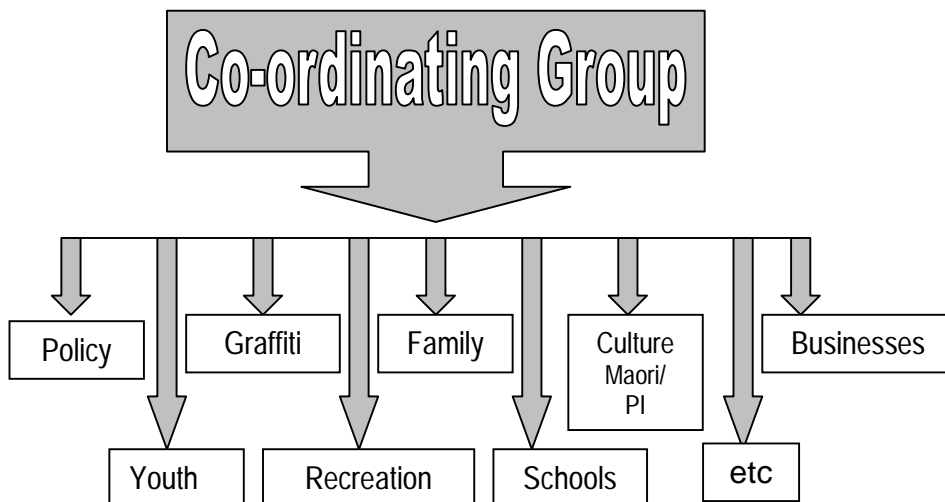
On 12 April 2000 the Shirley Intermediate School called and hosted a meeting of local residents and businesses close to the Palms Shopping area to address what was seen as a problem with some youth, relating to vandalism, graffiti and bullying. That meeting was attended by approximately 150 people. A number of Christchurch City Council staff, Councillors and Board members were also in attendance. The Christchurch City Council gave an undertaking that it would respond to this concern.

SUBSEQUENT ACTION

The Community Development Advisers for Shirley/Papanui and Burwood/Pegasus met and decided to initiate a process aimed at involving youth organisations and young people themselves. The first meeting of this group took place on 8 June. It appears that a number of individuals and organisations perceived this meeting to be a follow-up to the 12 April meeting. This was not the intent of the Community Development Advisers. A “youth” oriented response was to be but one of the range of possible responses. Thus, a second meeting was held on 22 June to clarify what was happening and to look at possible future direction and responses.

22 JUNE MEETING

This meeting was attended by a diverse range of people including Board members, staff, police, youth workers, residents and other social service workers. An explanation of the original intent of the 8 June meeting was outlined and a model for future progress suggested. A diagram of this model is as follows:



This model recognises the need for an overall Co-ordination Group to ensure that the various responses are co-ordinated and that further possible responses can be identified and initiated. A number of small working groups would then feed in to the Co-ordinating Group. The make-up of the Co-ordination Group was suggested to include:

- Two representatives from each of the Community Boards (Shirley/Papanui and Burwood/Pegasus)
- A staff member from each of the Advocacy Teams.
- A representative from each of: Police, schools and businesses in the area.
- An invitation to the Youth Advocate to be part of this group.

A number of people at the meeting indicated that they would take responsibility for initiating some of the small working groups, these being:

- schools;
- Maori and Pacific Island;
- policing;
- youth agencies and young people;
- businesses;
- resident groups.

Some discussion took place as to exactly what the problem was and some of the underlying causes. Debate and research on these matters would appropriately be the domain of the Co-ordinating Group.

- Recommendation:**
1. That the information be received.
 2. That a Co-ordinating Group be established.
 3. That two members of the Community Board be nominated to work on the Co-ordinating Group.
 4. That the Co-ordinating Group draw-up an Action Plan outlining the various responses and that this be reported back to the local community.
 5. That the Co-ordinating Group establish its frame of reference recognising that each small working group will work within its own sphere of expertise.

Chairperson's

- Recommendation:** That the officer's recommendation be adopted and that Ingrid Stonhill and Anne Carroll be the Board's representatives.