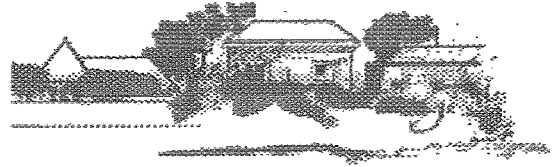


# ICON

Inner City West Neighbourhood Assoc. Inc  
P O Box 4486  
Christchurch



10 May 2007

## SUBMISSION ON ANNUAL PLAN

*Name:* Inner City West Neighbourhood Association Inc

*Address:* P O Box 4486  
Christchurch

*Phone:* Secretary - Bruce Bellis Ph 379 1356 day or night

*Email:* [bruce.bellis@xtra.co.nz](mailto:bruce.bellis@xtra.co.nz)

We wish to talk to the main points.

We have held a public meeting of residents in the Inner City West area on 19 April 2007 to discuss the Annual Plan. It is from that meeting that these submissions derive. We have 55 paid-up members.

Signed.....  ..... 10 May 2007

### OUR SUBMISSIONS ARE:

#### Subject: Street Maintenance

That street maintenance is insufficient in some high traffic area and an improvement is required. In particular in Hereford Street around Colombo Street - huge volumes of chewing gum on the pavement.

It was felt better quality contracts needed to be introduced for street cleaning.

Certain streets subject to night time activity should be cleaned more regularly.

Broken glass is a major problem in the inner city and what is being done about it and what can be done about it.

Rubbish left on Gloucester Street footpaths between the library and Latimer Square

#### Subject: Hospital Car Parking

That we oppose any increase in charges for parking around the hospital, and we express concern that existing levels of on-street parking are unaffordable and impractical as it is very difficult to re-charge the meters if you are in the middle of receiving treatment in a hospital ward.

Subject: Resourcing Residents Groups

That the Council look favourable towards more resourcing of the 90 resident's groups in the city to enable them to more readily respond to consultations and in providing submissions on Council plans.

Subject: Parking Buildings

That Council extend the current free parking in parking buildings from 1 hour to 2 hours to encourage more people into the Inner City and combat the advantage the malls have in this area.