

Ihutai Management Plan 2004

The Avon-Heathcote Estuary Ihutai Management Plan

Version One, August 2004

Final for approval

Please note this document is still to be formatted and proof read for spelling and grammatical errors.

CONTENTS (Page numbering will be corrected at formatting stage)

What Estuary?	1
What is the Ihutai Management Plan?	1
Who put the Plan together?	2
CONTRIBUTORS TO THE PLAN	
THE AVON-HEATHCOTE ESTUARY IHUTAI TRUST: The Trust Founding and Current trustees	3
Diagram illustrating the development of the Ihutai Management Plan	4
Vision	5
Summary of Goals and Targets	6
Goal 1 _Communities working together for the better management of the Estuary	7
Goal 2 _The Estuary and its surrounds supporting healthy ecosystems	13
Goal 3 _Wise management and development of open space	17
Goal 4 _Promoting safe and balanced recreation	20
Over-arching actions	26
Where to from here?	28
MONITORING AND REPORTING	
PLAN REVIEW	
Glossary	29

What Estuary?

The Avon-Heathcote Estuary/Ihutai (the Estuary) is the largest semi-enclosed shallow estuary in Canterbury, and remains one of New Zealand's most important coastal wetlands, despite being partially surrounded by residential housing of Christchurch City.

At approximately 700 hectares, the Estuary is relatively small. Its size, however, belies the value it has held, and still holds, as a place special to people for its rich variety of bird life, as a mahinga kai area, as a recreational playground and educational resource and, like all wetlands, filters and processes water from the catchment much like a "kidney" does.

It is this diversity that has caused what has been seen by some as management for inappropriate values, leading to a general decline in most of its biodiversity values.

(Map of Ihutai catchment to be inserted later)

Throughout the plan the references to the Avon-Heathcote Estuary /Ihutai (the Estuary) should be read as encompassing the Estuary and its catchment.

What is the Ihutai Management Plan?

The Plan is a detailed record of a vision and goals for the Estuary and its rivers, which engages communities, organisations and institutions in the improvement of ecological and recreational values, and increases awareness and understanding of the estuarine system as a whole. It also describes the many actions necessary to achieve the vision, an indication of who is responsible for carrying out the actions, a sense of priority and timeframe for the actions, and indicators that can be measured and tracked to determine progress. The Plan is non-statutory, that is, it has no legal standing and cannot, therefore, be enforced. This type of plan depends upon the goodwill, participation, and commitment of those identified as responsible for carrying out the actions. Those responsible include individuals, communities, and government and non-government organisations.

The Plan, therefore, is a written record of the vision and values expressed by those interested in and passionate about the Estuary. It also documents the many actions necessary for achieving the vision. The structure of the Plan reflects this hierarchy:

Vision → Goals → Targets → Actions

There are also over-arching actions which either stand alone, as they are not easily assigned to one goal or another, or they are relevant to more than one goal.

It is intended that this Plan be a living document, and that it is regularly reviewed and updated as new information and new insights become available.

Place names are a significant symbol of Ngai Tahu's relationship with the landscape. The Crown Settlement with Ngai Tahu provides for joint English/Maori names, including for the Avon Heathcote Estuary/Ihutai.

Ihutai is an abbreviation for Tai ki uta, Ihu Tai maroro, meaning Ihu Tai ki uta, "from the nose of the tide back to the land", Ihu Tai maroro, "to where the sea sinks down (on the continental shelf)"

Who put the Plan together?

The Plan is the culmination of several years' effort by individuals, organisations and institutions that have held meetings and workshops to discuss and debate a vision for an improved estuary environment.

From these meetings, the idea of a Trust was developed and brought to fruition on 18 June 2002 (see below for a description of the Trust). One of the first tasks for the Trust was the drafting of a "non-statutory management plan" for the Estuary and its catchments that took into account the many and varied interests, values and aspirations of the community. To achieve this task the Trust formed a management and planning working party consisting of trustees, interested Trust members, councillors and council staff. This group produced many drafts for discussion with the Trust board so it then could be taken to the public, interested parties, Ngāi Tahu, councils, and government organisations, for information and feedback. This Plan will be the result of the contribution of these many facets of our community.

THE AVON HEATHCOTE ESTUARY IHUTAI TRUST

The Trust is a charitable society registered in 2003. It was formed as a result of community requests over many years for the formation of an organisation that included committed representation from statutory bodies, tangata whenua and other agencies.

The Trust's Objects as outlined in its constitution are:

Objects of the Trust

The Avon-Heathcote Estuary Ihutai Trust Deed contains six objects. These objects shape and direct the activities of the Trust and form the starting point for this Plan.

1. To pursue for the Avon-Heathcote Estuary Ihutai ("the Estuary") the preservation of its natural and historic resources to maintain their intrinsic values, and to seek the protection of these resources, including restoration and enhancement, for their appreciation and recreational enjoyment by present and future generations.
2. To achieve healthy working ecosystems for the Estuary and its catchments through "Integrated Environmental Management", meaning a systematic effort to understand, through interactive interpretation and analysis, the linkages between ecosystems, resources and people.
3. To involve individuals, community groups and statutory agencies in learning and practicing the principles of integrated environmental management so that all parties responsible for the management of the Estuary and its resources apply these principles.
4. To strengthen relationships between mana whenua, communities, interest groups and statutory agencies for the better management of the Estuary and its resources.

5. To acquire, publish and use information and knowledge of the Estuary through research and monitoring, public education, contributing to planning, and any other actions that are necessary for the integrated environmental management of the Estuary, its resources and its catchments.
6. To increase public recognition, understanding and appreciation of the qualities and values of the Estuary.

The founding trustees (2002-03) were:

Alex Drysdale (chairman), Les Batcheler, Valerie Campbell, Ruth Dyson, Steve Gurney, Ron Dougherty, Tanya Jenkins, Kevin O'Connor, Murray Sim, Sandra Sim, Peter Townsend, and Chrissie Williams.

Trustees (2003-04) were:

Alex Drysdale (chairman), Valerie Campbell, Ruth Dyson, Shirley Fairhall, Alisdair Hutchison, Tanya Jenkins, Linda Rutland, Murray Sim, Sandra Sim, Martin Ward, and Chrissie Williams.

Current Trustees (2004-05) are:

To fill in after AGM

Appointed trustees:

<i>Mana Whenua Upoko Ngai Tuahuriri:</i>	Henare Rakiihia Tau
<i>Christchurch City Council:</i>	Cr David Cox
<i>Environment Canterbury:</i>	Cr Richard Budd

Support staff:

Staff from Christchurch City Council: David Newey (2002 – 2004), Eric Banks (2004 -)

Staff from Environment Canterbury: Anna Page (2002-03), Hamish Barrell (2003) and Jenny Bond (2003 -)

Coordinators: Marnie Kent (2003-03), Anna Norris (2003), Paul de Spa (2003-04) and Victoria Keene (2004)

Consultant: Carole Donaldson (2002-03)

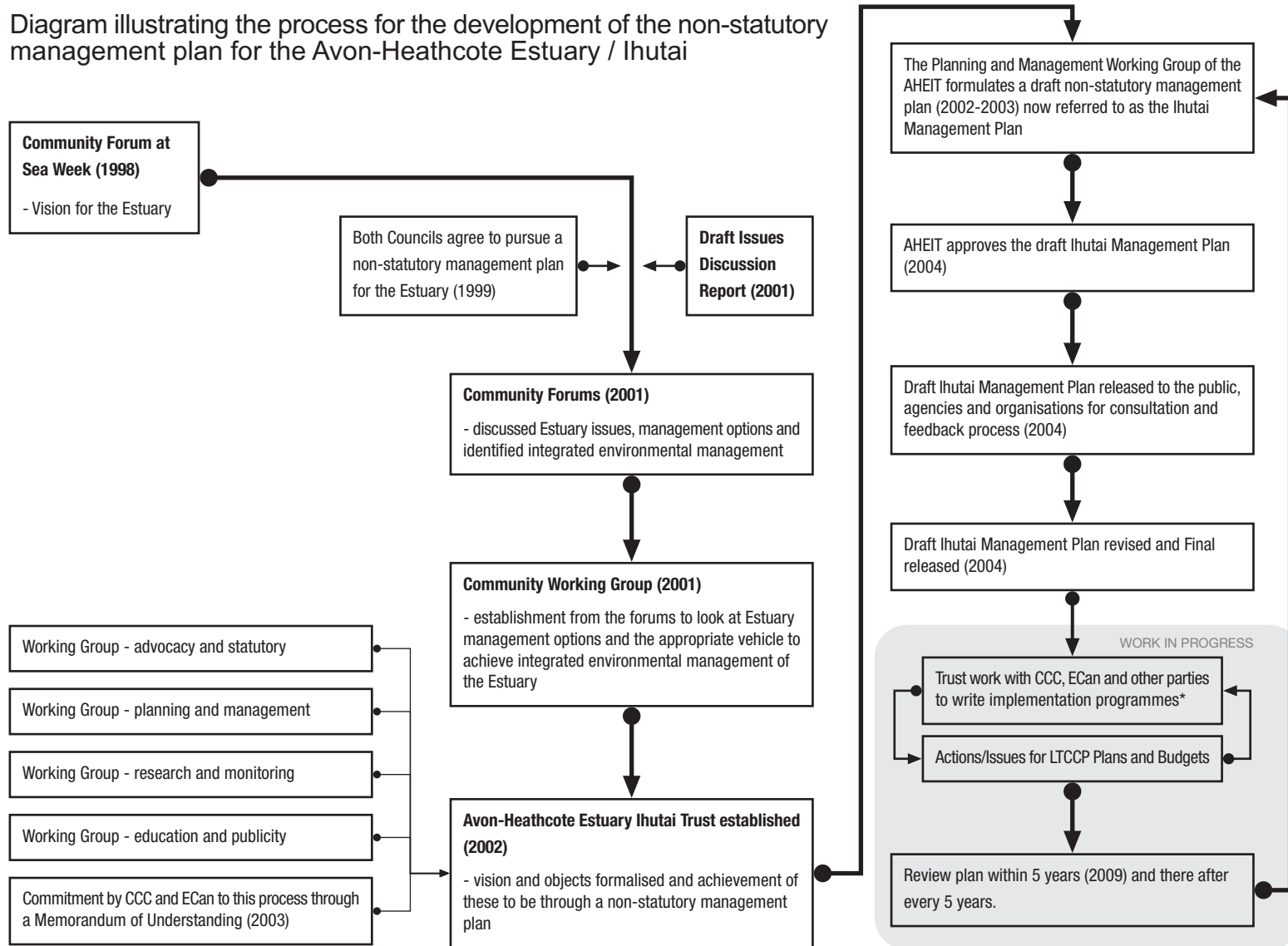
Treasurer:

Murray Sim (2002), Jocelyn Humphreys (2002-03), Marnie Kent (2003-04)

Abbreviations:

Trust and AHEIT-The Avon-Heathcote Estuary Ihutai Trust, CEA – Christchurch Estuary Association, CCC - Christchurch City Council, ECan - Environment Canterbury, MFish - Ministry of Fisheries, DoC - Department of Conservation, CPH – Community and Public Health, CDHB – Canterbury District Health Board, OSNZ - Ornithological Society of New Zealand, CPIT – Christchurch Polytechnic Institute of Technology.

Diagram illustrating the process for the development of the non-statutory management plan for the Avon-Heathcote Estuary / Ihutai



* Implementation Programmes - are about prioritising actions and aligning Trust, CCC, ECan, organisations and agencies work programmes in order to achieve Ihutai Management Plan goals

Please send us your views

The Avon Heathcote Estuary Ihutai Trust would value your views about the proposals developed in the:

Ihutai Management Plan – Version One The Avon-Heathcote Estuary/ Ihutai Management Plan

- Accordingly we encourage you to send us your views by mail or e-mail to any of the addresses below.
- Please write your surname clearly, including an initial, address and e-mail contact if you have one. If we have your contact details we can send you a summary of responses received.
- Please record the section of the Plan (goal, target or action) your comments refer to. That will help us take account of your views.

We look forward to receiving your views before the review date of:

2009

The Avon-Heathcote Estuary Ihutai Trust
Ihutai Management Plan
C/o Christchurch Environment Centre
PO Box 2657
Christchurch
New Zealand

E-mail IMP@estuary.org.nz

Website: www.estuary.org.nz

Ihutai Management Plan – Version One

Name:

Address:

Phone:

E-mail:

Your comments

<u>Section</u>	<u>Comment</u>
E. g. Action 23	

P.T.O

<u>Section</u>	<u>Comment</u>
----------------	----------------

VISION

The vision for the Trust, and, therefore, this Plan, was developed by the Trust and then ratified by the community at a public forum in June 2002.

***Communities working together for
Clean Water
Open Space
Safe Recreation
and
Healthy Ecosystems
that we can all enjoy and respect***

***Toi tu te taonga a iwi
Toi tu te taonga a Tane
Toi tu te taonga a Tangaroa
Toi tu te iwi***

Summary of Goals and Targets

GOAL 1: Communities working together for the better management of the Estuary

Target 1: Community spirit through community events and activities is fostered, which focuses attention on the Estuary.

Target 2: Communities are empowered, resourced and supported to participate in local decision-making (with regard to health and management of the Estuary).

Target 3: The histories and the cultures of the Estuary and surrounding areas are recognised, valued and promoted.

Target 4: Business and industry takes a guardianship role in the Estuary.

Target 5: Christchurch residents understand their impact and influence on the Estuary and environs and take positive actions.

Target 6: The partnership with Ngāi Tahu is nurtured.

GOAL 2: Healthy ecosystems are sustained in the Estuary and its surroundings

Target 7: Water quality in the Estuary and its rivers supports healthy aquatic ecosystems.

Target 8: The incidence of macro-algae as a nuisance in the Estuary is continuously reduced.

Target 9: The Estuary provides a healthy and safe ecosystem for birds.

Target 10: Estuarine fish populations are monitored and restored.

Target 11: Healthy estuarine invertebrate populations are restored and enhanced.

Target 12: Waste and contaminants entering the Estuary are continuously reduced.

Target 13: Protect, enhance and increase the natural areas of the Estuary and its catchments.

GOAL 3: Wise management of open space

Target 14: Protect the Estuary from further reclamation and encroachment.

Target 15: Unique vistas around the Estuary are retained and enhanced.

Target 16: New structures within and adjacent to the Estuary are limited to those that have an operational reason to be located there, and are for public use.

GOAL 4: Safe and balanced recreation

Target 17: Water quality in the Estuary is improved so that conditions are safe for contact recreation and other water contact activities.

Target 18: Pedestrian access to and around the Estuary is protected and improved.

Target 19: Improved public access and facilities for recreational activities are provided at appropriate sites around the Estuary.

Target 20: Adverse recreational and visitor impacts on the environment are minimised.

Target 21: Motorised watercraft use avoids adverse effects and conflicts with other users within the Estuary.

GOAL 1: Communities working together for the better management of the Estuary

Target 1: Community spirit through community events and activities is fostered, which focuses attention on the Estuary

No.	Action	Priority	Primary responsibility	Organisations that might be involved in implementing this action	How might it be done?	Progress indicators
1.	Organise and host public education presentations/discussions on Estuary issues/subjects of interest at least three times a year	Ongoing	Trust	Ngai Tahu	Identify issues/subjects of interest to the community regarding the Estuary. Develop in consultation with other Trust working groups a schedule with interesting and invigorating speakers with the option of including reports from the Trust	A schedule for public meetings agreed to one year in advance Numbers attending remain around 85 or better. A survey every two to three years of meeting attendees indicates a range of the community attend and are satisfied with the meetings
2.	Develop a brochure that includes, identifying points of interest that can be seen/experienced from land and sea, such as sites of significant ecological, historical, cultural and recreation.	Ongoing _next two years	Trust, ECan, CCC	DoC Ngai Tahu	Use existing information sources to develop a brochure that will identify points of interest from land and sea	Publication of brochure Greater understanding in the community about the Estuary and potential positive and negative impacts Numbers requesting brochure and feedback on brochure
3.	Develop field guide that integrates information from the brochure mentioned in Action 2 with people's actions affecting the Estuary and solutions	Two to five years	Trust		Information from the mapping exercise used to develop a field guide (Over-arching Action C)	Publication of field guide Numbers requesting field guide and feedback on field guide

No.	Action	Priority	Primary responsibility	Organisations that might be involved in implementing this action	How might it be done?	Progress indicators
4.	Develop "Get to know your Estuary" programme, for example walking tours guided by relevant experts to point out things of interest, issues, solutions	Next two years	Trust	CCC	Guided tours that work in with existing Estuary walking programmes for the public utilising the above field guide	Launch of programme Numbers attending the tours or other guided experiences grows and diversifies over time
5.	Link with and participate in public events with Estuary themes, e.g. Sea Week	Ongoing/high	Trust	CCC, ECan, DoC, Ngai Tahu	Choose two to three activities per year to be involved in	Trust involvement in two to three public events per year encourages more members of the community to participate in these events
6.	Create and run new events that bring the community together to focus on the Estuary	Ongoing/medium two to five years	Trust		Develop a list of ideas in consultation with interested stakeholders and other Trust working parties-Implement selected ideas	New events attract participants and an audience that extends from those already attending planned Trust events
7.	Develop a web site for the Estuary Trust and ensure it is updated and maintained	Ongoing	Trust	Ecan	Liaise with ECan to find an appropriate server and seek assistance on development of web page	Information is updated and added to it at regular intervals Feedback regarding the site indicates users are satisfied and that the site is regularly used by Trust members Number and diversity of source of web site hits grows

Target 2: Communities are empowered, resourced and supported to participate in local decision-making with regard to health and management of the Estuary

No.	Action	Priority	Primary responsibility	Organisations that might be involved in implementing this action	How might it be done?	Progress indicators
8.	Ensure that the community boards, ECan and CCC include the Avon-Heathcote Estuary Ihtai Trust and other Estuary organisations in their consultation processes	Urgent - ongoing	Trust	CCC, ECan	Trust introduces itself to the community boards and gives a presentation; CCC/ECan to include Trust and other organisations in list of stakeholders Petition from communities Letters from individuals and other interested parties	Specific invitations and information to the Trust from the community board Estuary interests documented where relevant Decisions that satisfy the objectives of the Trust
9.	Ensure a strong, representative and independent Trust	Ongoing	Trust		The Trust's business plan developed and updated	Business plan reviewed and updated annually Membership continues to grow both in volume and geographic diversity Annual meeting continues to attract a large percentage of Trust members
10.	Produce a newsletter to disseminate information on roles, responsibilities, and activities that affect the Estuary	Urgent-ongoing	Trust	CCC, Ecan, Ngai Tahu	Information received by Trust from named organisations Trust co-ordinator ensures information is included in newsletter	Newsletter twice a year. Annual survey of newsletter recipients indicates users are satisfied

No.	Action	Priority	Primary responsibility	Organisations that might be involved in implementing this action	How might it be done?	Progress indicators
11.	Ensure the Objects of the Trust are adopted as community outcomes under appropriate long-term council community plans	Urgent _ next two years	ECan, CCC	CDHB	Engage with CCC and ECan in the LTCCP process	The Objects of the Trust are cited in council planning and decisions
12.	Education resources relevant to the Estuary are maintained and made available to the public and schools	Ongoing _ next two years	Trust	CCC, ECan, DoC, Ngai Tahu	Monitor, build on and update the Estuary education resources and circulation list originally provided by Friends of the Estuary Identify groups with educational resources in Trust and other organisations	Users of this resource are surveyed every three years The package is reviewed and updated every three years Involvement of schools and the public involved in Estuary issues grows
13.	Organise community workshops to involve people in developing action programmes	Next two years	Trust	CCC, ECan	Trust organises a public meeting to gauge and raise community interest in issues affecting the Estuary's catchments	Group(s) formed to "adopt" a reach of river within a catchment

Target 3: The histories and cultures of the Estuary and surrounding areas are recognised, valued and promoted.

No.	Action	Priority	Primary responsibility	Organisations that might be involved in implementing this action	How might it be done?	Progress indicators
14.	Develop an interpretation plan for the Estuary (Refer Actions 2, 3 and 4)	Two to five years	Trust	Historic Places Trust, ECan, CCC, Ngāi Tahu, Canterbury Museum	Build on existing signage /interpretive information at key sites around the Estuary, explaining the historic nature of the area - Ideas from the Green Edge Programme - Sponsorship of signs by local businesses	Plan completed Number of signs erected
15.	Actively provide information on Ngāi Tahu values and history	Ongoing	Trust, Ngāi Tahu		Brochure, signs, marae activities, evening lectures, posters Use stories to link Maori to the estuary – include stories in education and publicity material	Schedule of events carried out Raised awareness about Maori values
16.	Compile oral and written histories of the Estuary and its catchment	Two to 10 years	Trust	Historic Places Trust local historical interest groups, Ngāi Tahu	Working party of responsible players, sponsored by local businesses, or from external funding	Histories completed and available in a variety of media
17.	Ensure organisations and institutions highlight the Estuary as a significant Canterbury (and New Zealand) icon	Two to 10 years	Trust, ECan, CCC		Estuary to feature in publicity material Presentation of subjects of particular interest to specific exhibitions Special exhibitions (such as Canterbury Museum) Information on the Estuary available at CCC service centres, Our City and a Trust display moved between the libraries	Activities by relevant organisations recognise and highlight the value of the Estuary
New	Prepare a cultural values report for Ihutai		Ngāi Tahu	Trust, ECAN, CCC	Input from Ngāi Tahu individuals, whanau / Ngāi Tahu, Papatipu Runanga and Te Runanga O Ngāi Tahu	Cultural Values report completed and available in a variety of media

Target 4: Business community shares the guardianship role of the Estuary

No.	Action	Priority	Primary responsibility	Organisations that might be involved in implementing this action	How might it be done?	Progress indicators
18.	Identify and target businesses which might adopt or sponsor an area by the rivers or Estuary	Two to five years	Trust	Canterbury Employers' Chamber of Commerce, Canterbury Manufacturers' Association	Define and develop opportunities for involvement in sponsorship	Industries/businesses "signed up" and pledging to operate sustainably with the Estuary and its catchment Public are aware of such businesses/industry
19.	Promote pollution prevention and environmental audits to relevant industries and developments within the Ihutai catchments	Two to five years	Trust, CCC, ECan	Landcare Research, Canterbury Employers' Chamber of Commerce, Canterbury Manufacturers' Association, CDHB	Promote and build on projects currently being implemented Encourage consenting agencies to require audits as conditions of consents Showcase and acknowledge good environmental practice eg successful sediment retention	Measurable reduction in pollutants entering the Estuary Industry has a greater understanding of its impacts on the Estuary and commitment to reduce any negative impacts and to highlight the positive

Target 5: Christchurch residents understand their impact and influence on the Estuary and take positive actions in response

No.	Action	Priority	Primary responsibility (other)	Organisations that might be involved in implementing this action	How might it be done?	Progress indicators
20.	Raise awareness of the impacts of day-to-day activities on the Estuary Links to Actions 3 and 13	Urgent _ next two years	Trust, ECan, CCC	Schools, universities, WaterWatch, North Canterbury Fish and Game Council, Ngāi Tahu	First. focusing on those close to the Estuary and rivers and second the general population Compile information on all impacts from households Hold community workshops on the effect of the Heathcote and Avon rivers and catchment activities on the Estuary	Greater understanding in the community of negative and positive impacts on the Estuary and its catchment and solutions to these negative impacts Measurable reduction in pollutants entering the Estuary Queries about Estuary and residential impacts increase

Target 6: A partnership with Ngāi Tahu is nurtured¹

No.	Action	Priority	Primary responsibility (other)	Organisations that might be involved in implementing this action	How might it be done?	Progress indicators
21.	Build, then maintain and develop a relationship between the Trust, Te Runanga O Ngāi Tahu, Kaitiaki Papatipu Runanga and Ngāi Tahu beneficiaries	Urgent and ongoing	Trust, Ngāi Tahu, CCC and ECan		Meetings with the resource management committees of Ngai Tuahuriri and Ngāi Tahu Invitations to Trust events and meetings Special events organised to celebrate the common values held for the Estuary	Three-way constructive and open communication begins and continues to occur
New	Identify historic and cultural values of Ihutai from which to base future relationships		Trust, Ngāi Tahu, CCC and Ecan		Input from Ngāi Tahu individuals, whanau / Ngāi Tahu, Papatipu Runanga and Te Runanga O Ngāi Tahu Link with Action 15	Historical and cultural information gathered
New	Support Ngāi Tahu in their kaitiaki roles and responsibilities		Trust, Ngāi Tahu, CCC and ECan		Active involvement of Ngāi Tahu on all Trust actions.	
New	Incorporate cultural monitoring techniques and methodologies into monitoring of water quality and species		Trust, Ngāi Tahu, CCC and ECan		Work with Ngai Tahu to undertake regular monitoring of water using cultural monitoring techniques	

¹ Before we can clearly identify the Ngai Tahu groups that actions will occur with (i.e. individuals, whanau / mana whenua, Papatipu Runanga, Te Runanga O Ngai Tahu) the AHET and Ngai Tahu would need to meet

GOAL 2: Healthy ecosystems are sustained in the Estuary and its surroundings

Target 7: Water quality in the Estuary and its rivers support healthy aquatic ecosystems

No.	Action	Priority	Primary responsibility (other)	Organisations that might be involved in implementing this action	How might it be done?	Progress indicators
22.	Compile and distribute document in simple language on current water quality <i>in the Estuary and its rivers</i> (problems and causes) as it relates to benthic, pelagic, terrestrial and human populations	Next two years	Ecan, AHEIT, CCC	Universities, CDHB	Identify and pull together existing information and develop it into a user-friendly, yet robust, document	Document is produced that helps communities and individuals understand water quality issues in the Estuary
23.	Monitor water quality in sites around the Estuary and its rivers	Ongoing	ECan, volunteer sampling group, Trust and CCC	CDHB, Ngāi Tahu CPH, CEA	Regular sampling and reporting of results Incorporate cultural monitoring in association with Ngāi Tahu	Water sampling results published annually Number and duration of hits on water quality results on the ECan website
24.	Identify issues of importance to evaluate impact of removal of discharge and pipeline construction on the Estuary and its rivers	Urgent	Trust, CCC, ECan, universities	CDHB	Collaborate with statutory and research organisations	The Trust better understands the implications and are able to modify work plans (including the management plan) if necessary
25.	Determine the desirable level of water quality in the Estuary and rivers Stage 1 - water safe for swimming Stage 2 - fish safe to eat Stage 3 - shellfish safe to eat Stage 4 – Mahinga kai / cultural use	Three to five years	Trust, ECan, CCC	CDHB, CPH	Contract scientist to review literature, identify further science needs, etc. under the management of the research and monitoring working party Choose indicator species Presence/absence (abundance) Stepped improvement approach Advocate for the limitation or removal of discharges to reduce / avoid adverse effects.	Desirable water quality is identified so that Trust work plans contain actions for achieving it, and relevant agencies acknowledge the level of water quality they should be aiming towards in their long-term planning

No.	Action	Priority	Primary responsibility	Organisations that might be involved in implementing this action	How might it be done?	Progress indicators
26.	Identify barriers and methods for achieving the levels of water quality identified in Action 25	Three to five years	Trust, ECan, CCC	CDHB, Ngāi Tahu, CPH	<p>Identify and advocate control of significant discharges to land and water. Include stormwater, sediment and land use impacts (including those within the catchment, as well as those that occur alongside the river and Estuary).</p> <p>Conduct separate community workshops on the Heathcote and Avon rivers primarily to consider water quality issues and what to do about them</p>	Relevant organisations implement the methods identified by the Trust

New Target : The Estuary again supports healthy mahinga kai

No.	Action	Priority	Primary responsibility (other)	Organisations that might be involved in implementing this action	How might it be done?	Progress indicators
New Action	Identify historic mahinga kai species and associated habitats		Trust, Ngāi Tahu		Develop an inventory of historic sites and sepeciesinconjuction with Ngāi Tahu	
New Action	Protect and enhance remaining mahinga kai species		Trust, Ngāi Tahu		Identify mahinga kai species and diversity. Develop strategies to achieve protection and enhancement	Healthy existing mahinga kai species are present and population is sustainable
New Action	Restore historic mahinga kai species		Trust, Ngāi Tahu		Re-introduce important species that were once present	Healthy historic mahinga kai species are present and population is sustainable
New Action	All customary mahinga kai takes or harvesting are sustainable		Trust, Ngāi Tahu	M Fish	Perhaps through a maitaitai	Healthy mahinga kai species are present and population is sustainable

Target 8: The incidence of macroalgae as a nuisance in the Estuary is continuously reduced

No.	Action	Priority	Primary responsibility (other)	Organisations that might be involved in implementing this action	How might it be done?	Progress indicators
27.	Monitor populations of sea lettuce seaweeds and odour and report to the CCC/ECan	Urgent	Trust, ECan, CCC	University of Canterbury	Undertaking research projects, monitoring and reporting	Actions undertaken by authorities based on the results of monitoring
28.	Support given to the authorities to investigate and manage the issue and maintain a watching brief	Ongoing	Trust, ECan, CCC		Active liaison with CCC staff Ongoing investigations into alternative methods are continued	Occurrence of nuisance algae is reduced
29	Promotional material on sea lettuce monitoring and action is developed.	Ongoing	Trust, CCC, ECan		Newsletter, brochure	Community remains aware of the issue and supports efforts to eradicate problems

Target 9: The Estuary provides a healthy and safe ecosystem for birds

No.	Action	Priority	Primary responsibility (other)	Organisations that might be involved in implementing this action	How might it be done?	Progress indicators
30.	Monitor and publicise nationally and internationally important bird populations, species and species diversity	Ongoing	CCC, ECan, Ornithological Society	Forest & Bird, Ngāi Tahu, North Canterbury Fish and Game Council, OSNZ	CCC ranger programmes; CCC to develop educational programmes	Results are used to inform the public and raise awareness of concerns
31.	Determine best methods of ensuring appropriate habitats are maintained and implement methods	Next five years	CCC, ECan, Forest & Bird, Ngāi Tahu, North Canterbury Fish and Game Council, OSNZ.	OSNZ	CCC ranger programmes Limit public access where appropriate	Methods developed and trialled
32.	Increase bird habitat in appropriate parts of the Estuary	Ongoing	CCC, Trust	Ngāi Tahu, OSNZ	Development and implementation of an enhancement plan	Identified habitats are maintained and/or improved.

Target 10: Estuarine fish populations are monitored and restored

No.	Action	Priority	Primary responsibility (other)	Organisations that might be involved in implementing this action	How might it be done?	Progress indicators
33.	Identify nationally and internationally important fish populations including taonga species and other species of importance to Ngāi Tahu. Assess their numbers, quality, breeding and feeding requirements and where feasible the changes from the 1965-66 survey	Urgent _ next 10 years	Trust	MFish, CCC, ECan, DoC, Ngāi Tahu, NIWA, universities, North Canterbury Fish and Game Council	Let contract to undertake three annual surveys pre discharge-cessation, using comparable methodology to the 1965-66 survey. Several post-cessation surveys will also be required	Results are used to inform the public and raise awareness of concerns
34.	Analyse results and implement recommendations from report in Action 33	10-15 years	Trust	Mfish, CCC, ECan, DoC, Ngāi Tahu, NIWA, universities, North Canterbury Fish and Game Council	Depending on the report's recommendations it may include Fisheries management methods such as setting and enforcing levels of harvesting	Management measures are put in place to respond to identified problems
35.	Determine areas in Estuary that have particular value for mahinga kai	Five to 10 years	Trust, Ngāi Tahu	North Canterbury Fish and Game Council, CDHB	Discussions between agencies and Ngāi Tahu	Areas identified and targeted for action

Target 11: Healthy estuarine invertebrate populations are maintained (or protected) and enhanced

No.	Action	Priority	Primary responsibility (other)	Organisations that might be involved in implementing this action	How might is be done?	Progress indicators
36	Collate information on current and historic invertebrate populations, including recommendations on actions needed to restore and protect	Next 10 years	Trust, ECan, CCC	University of Canterbury, DoC and CPIT	Student project-desktop exercise bringing together information collected from a number of studies	Results are used to inform the public and raise awareness
37	Analyse results and implement recommendations from report in Action 36	10-15 years	Trust.	MFish, ECan, CCC, DoC, Ngāi Tahu, NIWA, Universities.	Setting and enforcing levels of harvesting Water quality and discharges re- assessed	Management measures are put in place to respond to identified problems

Target 12: Waste and contaminants entering the Estuary are continuously reduced

No.	Action	Priority	Primary responsibility (other)	Organisations that might be involved in implementing this action	How might it be done?	Progress indicators
38.	Identify locations within the catchment, focusing on: (a) areas closest to the Estuary where hazardous and/or ecologically damaging wastes have been stored or disposed; and (b) types of contaminants likely to pose the most risk to the estuarine ecosystem	Five years	ECan, CCC	CDHB	Identify known contaminated sites with an unacceptable risk to human health and the environment. Use existing information from various sources	Sites identified and prioritised.
39.	Develop and implement management strategies to prevent movement of hazardous substances and wastes into the Estuary	Five to 10 years	ECan, CCC	MfE, Industry groups, CDHB, Universities	As part of Action 19 and 26. Advocate for these strategies to be developed Advocate at consent hearings and via plan changes	Strategies developed, adopted and implemented
40	Assist in the implementation of strategies identified in Action 39	Five to 10 years	Trust	Industry groups, Universities, CDHB, CPH	As part of Action 19	Greater number of businesses surrounding or impacting on the Estuary and its catchments are more proactive in handling of hazardous substances and waste Regular comprehensive sampling shows progressive and significant reductions in waste and contaminants reaching the rivers and the Estuary.

Target 13: Protect, enhance and increase the natural areas of the Estuary and its catchment

No.	Action	Priority	Primary responsibility (other)	Organisations that might be involved in implementing this action	How might it be done?	Progress indicators
41.	Identify and categorise existing ecological communities (estuarine, aquatic and terrestrial), including those that are threatened	Three to five years	Trust, ECan, CCC, DoC, universities	NIWA, Ngāi Tahu	Students under direction of research and monitoring workgroup Through the mapping exercise (Over-arching Action C). Identify the threats to these Identify taonga and other important species and their habitat	Produce a list of existing ecological Estuary studies. Identification of all existing natural areas. Identify most threatened communities by 2006 Write a restoration and protection plan for the priority communities by 2008
42.	Implement a restoration and protection plan for native ecological communities adjacent to the Estuary and its catchments	Next five years	Trust, ECAN, CCC	, DoC, universities, Ngāi Tahu	Use information produced under Action 41 Volunteers used for planting and monitoring Develop effective indicator species. Indicator species will recognise and measure Ngāi Tahu cultural values, taonga and important species	Indicator species showing improved ecosystem health within two years of the implementation of the Plan
43.	Promote active management of pests, weeds and game birds having an adverse environmental impact	Next two years	Trust, ECan, CCC,	DoC, , Ngāi Tahu, , North Canterbury Fish and Game Council	Submissions on pest strategies Support implementation of strategies Work with Fish & Game in the development and implementation of Fish & Game Management Plans. Consider cultural harvest of game birds as a control method	Forum group established between the Trust and North Canterbury Fish and Game Council
New	Promote awareness of potential new pest invaders to ensure these are dealt with in a timely manner before they can become established		Trust, ECan, CCC	DoC, Fish and Game, MAF		

44.	Support the continuation of enhancement programmes on a catchment wide scale consistent with the Ihutai Plan goals and targets	Next two years	CCC	Trust, Ecan, Ngāi Tahu	Develop criteria and principles for the identification of appropriate species – right plant, right place	Trust establishes a “planting group” by 2004 The planting group undertakes at least two planting activities a year in partnership with councils
45.	Identify areas where the community or special groups could be involved in planting, including funding opportunities	Next two years	CCC	Trust, ECan, Trees for Canterbury, Ngāi Tahu	Provide guidance on landscape and planting plans, including recommended species	Areas identified and work begun
46.	Identify areas which businesses could “adopt” for planting projects	Next two years	Trust	CCC, business community, Trust, Trees for Canterbury, Ngāi Tahu	Link to Action 18 Establish a business liaison group	Business liaison group established and first planting action completed by end 2005
47.	Monitor/review the plans for the enhancement of open spaces, paddocks and ponds that adjoin the Estuary	Next five years	Trust		Register as interested party and make submissions when appropriate	First part of enhancement plan implemented in line with proposed budget forecast

GOAL 3: Wise management of open space

Target 14: Protect the Estuary from further reclamation and encroachment

No.	Action	Priority	Primary responsibility (other)	Organisations that might be involved in implementing this action	How might it be done?	Progress indicators
48.	Assemble information on existing reclamations and how they are being managed	Next five years	ECan, CCC		Assessment of relevant council records Use of local knowledge As part of the mapping project outlined in over-arching Action C	Establishment of a reclamations database Develop and present, to both councils, a study on the history of reclamation in the Estuary by 2006
49.	Promote the protection of the Estuary from further reclamation through the resource consent process, advocacy and resource management planning processes	Ongoing	Trust		Submissions on resource consent applications Seek plan variations / changes	No further reclamations in the Estuary or along its shores

Target 15: Unique vistas around the Estuary are retained and enhanced

No.	Action	Priority	Primary responsibility (other)	Organisations that might be involved in implementing this action	How might it be done?	Progress indicators
50.	Define and identify existing vistas, assess their condition, and recommend improvements	Three to five years	CCC, Trust	NZ Institute of Landscape Architects	Landscape architecture student to prepare assessment as part of course work	Assessment prepared to agreed standard Recommendations become part of a variation to the proposed City Plan
51.	Prepare a landscape concept for the Estuary and surrounds, which will include Identifying areas where vistas should be protected and developed and in what form	Five to 10 years	Trust	CCC, ECan, NZILA, Ngāi Tahu	Student project	Landscape plan developed and adopted by relevant agencies/organisations

52.	Ensure landscaping of sites is sympathetic to the ecosystem	Urgent	CCC, Trust	NZILA	Submit on resource consents Ecosystem information supplied to agencies	As above
53.	Identify and prioritise structures within the Coastal Marine Area that are intrusive and advocate for their removal where this is possible and desirable	Next two years	Trust, ECan, CCC		Trust to be registered as affected party for resource consent applications	Top priority structures are removed by end 2005
54.	Ensure any type of development is sensitive to open- space goals of the Trust	Next two years	Trust, CCC		Monitor City Plan controls and ensure they are followed	Goals are met for future development once landscape plan is complete

Target 16: New structures within and adjacent to the Estuary are limited to those with an operational reason for being there, and are for public use

No.	Action	Priority	Primary responsibility (other)	Organisations that might be involved in implementing this action	How might it be done?	Progress indicators
55.	Advocate to relevant agencies that no new private structures be permitted	Ongoing	Trust	ECan, CCC, CEA	Submitting on resource consent applications Seek plan variations / changes	Submissions lodged within statutory time frames Evidence presented at hearings Any public structures are necessary, well designed and have minimal environmental impact

GOAL 4: Safe and balanced recreation

Target 17: Water quality in the Estuary is improved so that conditions are safe for swimming and other water contact activities²

No.	Action	Priority	Primary responsibility (other)	Organisations that might be involved in implementing this action	How might it be done?	Progress indicators
56.	Publicise gradings given to beaches around the Estuary based on Microbiological Water Quality Guidelines, June 2003 Links to Actions 23 and 25	Underway _ Ongoing	ECan, CCC, community and public health	CDHB, CPH	Statutory bodies determine gradings Trust (research and monitoring working party) review gradings and make recommendations to Ecan Publicise where information is available	Comparison completed Levels of improvement determined with recommended actions
57.	Determine relationship between stormwater discharges, river water and Estuary water quality Links to Target 7 actions	Next two years	CCC, ECan, Trust	CDHB, CPH	Review of records, monitoring project and CEA information _ possible student project	Report presented on contribution of catchments to Estuary water quality by end 2006
58.	Advocate enforcement of conditions on stormwater discharges and advocate for improvements to current stormwater treatments	Next 2 years	ECan, CCC	Trust, CDHB, CPH	Bring to council's attention information on stormwater treatment systems Liaise with the WaterWatch programme and report results to CCC/ECan	Selected stormwater monitoring by CCC/ECan shows water quality improvements for three years in a row from date of adoption of new treatment measures
59.	Publish sewage overflow sites, duration and frequency of sewage overflows and target these for action	Ongoing	Trust, CCC	CDHB, CPH	Publication in newsletter	Incidence of overflows declines from the number permitted by the resource consent granted to CCC in 2002

² This standard is intended to be the first in a stepped series of water quality improvements outlined in Action 25. This will include a higher standard for healthy mahinga kai.

Target 18: Pedestrian access to and around the Estuary is protected and improved

No.	Action	Priority	Primary responsibility (other)	Organisations that might be involved in implementing this action	How might it be done?	Progress indicators
60.	Identify areas around the edge of the Estuary where public access needs to be enhanced, and, where appropriate, reinstated	Next two years	CCC, Trust	Ecan, Disable Persons Authority, CEA	Survey users (including provision for people with disabilities) and seek input from experts to ensure ecological needs are balanced with recreational aspirations (e.g. bird habitat) Identify roads and reserves around Estuary	Recreational needs analysis complete by end 2006
61.	Monitor use of walking tracks and use this information to ensure that maintenance funding is targeted towards desirable areas	Next two years	CCC		User counts, surveys, track observations	Track counters installed at key locations by end 2004 Highest-use walking tracks maintained to an agreed standard including safety

Target 19: Facilities for recreational activities are provided at appropriate sites around the Estuary and rivers

No.	Action	Priority	Primary responsibility (other)	Organisations that might be involved in implementing this action	How might it be done?	Progress indicators
62.	Research and report on current facilities and recreational activities, including a needs analysis	Three to five years	CCC, ECan	Ngāi Tahu, Water Sport clubs, CEA, AHEIT	Recreational survey using the Port Hills Recreation Survey as an example	Recreational needs analysis complete by end 2007
63.	Prepare a programme that prioritises the need identified in Action 61 and Action 62	Five years	CCC, ECan	Trust, Ngāi Tahu	Advocate appropriate authorities and organisations to designate access, and to construct facilities	Access and facilities for recreational activities are appropriately improved

Target 20: Adverse recreational and visitor impacts on the Estuary environment are minimised

No.	Action	Priority	Primary responsibility (other)	Organisations that might be involved in implementing this action	How might it be done?	Progress indicators
64.	Assess the current environmental impacts of visitors and recreational use and recommend mitigation measures	Next 10 years	CCC, ECan	Ngāi Tahu	Link with Action 61	Mitigation measures in place two years after recreation survey is adopted
65.	Develop educational materials on the impacts and the solutions	Next 10 years	Trust	CCC, Ecan Ngāi Tahu	Public meetings and Information boards	On-site survey of Estuary users one year after educational material has been distributed
66.	Support appropriate authorities in defining and enforcing by-laws, rules and licensing for the management of recreational and harvesting activities and their impacts in and around the Estuary	Next 10 years	Trust	ECan, CCC	Bring to authorities' attention any commercial activities occurring on public land Develop a Harvest Management Plan for recreational and customary harvesting	All commercial activities on public land adjacent to the Estuary are appropriately consented/licensed within the next three years

Target 21: Ensure motorised watercraft use avoids adverse effects and conflicts with other Estuary users

No.	Action	Priority	Primary responsibility (other)	Organisations that might be involved in implementing this action	How might it be done?	Progress indicators
67.	Support continued enforcement of existing rules/regulations, such as the five-knot speed limit in normal operating conditions	Ongoing	Trust	Ecan, Ngāi Tahu, Water sports clubs	Identify breeding areas (kohanga) and other important ecological and cultural areas where further restrictions on motorised craft may be appropriate. Making public aware who to contact in particular circumstances	Rules and regulations effectively enforced and monitored Reported incidence of watercraft exceeding five-knot speed limit progressively reduced

OVER-ARCHING ACTIONS

These over-arching actions are focused on achieving the vision and supporting the Objects of the Avon-Heathcote Estuary Ihtai Trust. The actions either stand alone or they are relevant to more than one goal.

No.	Over-arching actions and outcomes	Priority	Primary responsibility (other)	Organisations that might be involved in implementing this action	How might it be done?	Progress indicators
A.	Identify ways to improve the integrated environmental management of the Estuary and its catchment and promote their uptake by all responsible parties	Ongoing	Trust, CCC, ECan	Landcare Research, Ngāi Tahu	<p>Develop set of criteria that define Integrated Environmental Management (IEM)</p> <p>Integration of Ngāi Tahu cultural values into the IEM criteria</p> <p>Workshop to consider these criteria in the context of the Estuary situation</p> <p>Produce brochure on IEM and the Estuary outlining what needs to be done and by whom</p> <p>Review the Plan to ensure new insights or information included as a result of IEM work</p> <p>Actively promote IEM with all those responsible for making it happen</p> <p>Review existing planning documents and this Plan, etc. for IEM philosophy/ potential</p> <p>Run a Heathcote River and Avon River community workshop along IEM lines</p>	<p>Short term: improved understanding of IEM by the Trust, councils and other agencies, community</p> <p>Medium term: actions by the above reflect the understanding of IEM</p> <p>Long term: decision-making uses the IEM approach resulting in improved management of the Estuary</p>

No.	Over-arching actions and outcomes	Priority	Primary responsibility (other)	Organisations that might be involved in implementing this action	How might it be done?	Progress indicators
B.	Work towards the Estuary being recognised as a wetland of international importance and registered on the Ramsar list when sufficient improvements have been made to the health of the Estuary/	Next five years	Trust	DoC, Ngāi Tahu	Determine current status Determine what needs to be achieved Document and discuss with the community and interested parties	Short term: discussions started on the requirements of Ramsar and the appropriateness of the Trust engaging in the promotion of the site for Ramsar status determination Medium term: dependent upon results of above, agreements reached on how, who, when should apply, etc. Long term: dependent upon the above and given sufficient improvement to the health of the Estuary, application is made for the designation of Ramsar status
C.	Prepare maps of the Estuary and its catchment to identify significant ecological issues/sites, landscape, historical and cultural sites of importance Map would also show land uses and discharges that affect the Estuary Links to Actions 24, 25 and 26	Urgent	Trust, ECan, CCC		A collaborative project with councils, Ngāi Tahu, agencies, communities and technical/science experts that visually charts what is known and identifies what data still needs to be known through a gap analysis Preparation of a cultural values report in conjunction with Ngāi Tahu	Short term: information/data holders participate in the mapping exercise. Cultural values report prepared. Medium term: The product is developed, requested and used by relevant parties/individuals Long term: product is used as a tool for the management of the Estuary.
D.	Liase and work with other organisations with similar objectives	Ongoing	Trust	NZ Landcare Trust, CCC, ECan, Ngāi Tahu, community groups	Exchanging newsletters Reciprocal visits to sites Attending workshops, conferences, seminars	An increase in the number of meetings the Trust participates in with other organisations in relation to the Estuary and its catchments
E	Investigate the establishment of a Mataitai for the Estuary/Ihutai				Identify key interested parties. Co-ordinate meetings with interested parties to investigate feasibility and if appropriate prepare and make an	

					application to the Minister of Fisheries (this includes the identification of the special relationship of tangata whenua with the area).	
--	--	--	--	--	--	--

Where to from here?

MONITORING AND REPORTING OF THIS PLAN

There are two spheres to the monitoring and reporting of this Plan.

1. There will be monitoring to ensure that actions carried out achieve the desired outcomes. Achievement of progress indicators aims to provide a measure that illustrates the completion of an action.

The Trust will set a monitoring plan at the beginning of each calendar year. This plan will be based on an analysis of the progress indicators and current tasks in the Management Plan, with monitoring and reporting tasks being set by the board.

2. Relevant agencies will need to be monitored to ensure that the Plan is kept at the forefront of decision-making regarding the Estuary.

The Avon-Heathcote Estuary Ihutai Trust will carry out the monitoring and subsequent reporting roles.

PLAN REVIEW

The Avon-Heathcote Estuary Ihutai Trust will review this Plan within five years of its adoption by the Trust board, and, thereafter, every five years.

Glossary

Benthic populations:

Those that live at or near the bottom of a waterbody.

Catchment:

Refers to the total area from which a single river collects surface run-off. In the US, the term watershed is used.

Modified from the Dictionary of Physical Geography – John Whittow; Penguin Books 1984.

Coastal Marine Area:

Means that area of the foreshore and seabed:

- (a) of which the seaward boundary is the outer limits of the territorial sea; and
- (b) of which the landward boundary is the line of mean high water springs, except that where that line crosses a river, the landward boundary at that point shall be whichever is the lesser of
 - (i) one kilometre upstream from the mouth of the river, or
 - (ii) the point upstream that is calculated by multiplying the width of the river mouth by five.

This definition is from Section 2 of the Resource Management Act 1991. The location of the Avon and Heathcote river mouth boundaries was set out in the Christchurch CC v Canterbury RC C80/92 (PT). The outer limit of the territorial sea and the Coastal Marine Area is 12 nautical miles offshore.

Community outcomes:

From the Local Government Act 2002 in relation to a district or region:

- (a) means the outcomes for that district or region that are identified as priorities for the time being through a process; and
- (b) includes any additional outcomes subsequently identified through community consultation by the local authority as important to the current or future social, economic, environmental, or cultural well-being of the community.

Contaminant:

Includes any substance (including gases, liquids, solids, and micro-organisms) or energy (excluding noise) or heat, that either by itself or in combination with the same, similar, or other substances, energy, or heat:

- (a) when discharged into water, changes or is likely to change the physical, chemical or biological condition of water; or
- (b) when discharged onto or into land or into air, changes or is likely to change the physical chemical, or biological condition of the land or air onto or into which it is discharged.

This definition is from Section 2 of the Resource Management Act 1991.

Contaminated Site:

A contaminated site is a site at which hazardous substances occur at concentrations above background concentrations and where assessment indicates it poses, or is likely to pose, an immediate or long-term risk to humans or the environment.

Ecology:

The interrelationship between organisms and their physical surroundings, and the study of the relationship.
From the Proposed Regional Coastal Environment Plan.

Ecosystem:

Plants, animals, their physical environment, and the dynamic processes that link them.
From the Proposed Regional Coastal Environment Plan.

Estuary:

The mouth of a river where it broadens into the sea and within which the tide ebbs and flows, leading to an intermixing of saline and fresh-water.

Modified from the Dictionary of Physical Geography – John Whittow; Penguin Books 1984.

Habitat:

The natural home of plants or animals, or communities of them. It has both biological and physical components, which among other things may include water, rocks, soil, or vegetation.

From the Proposed Regional Coastal Environment Plan.

Hazardous substance:

As in the Hazardous Substances and New Organisms Act 1996 (Section 2) it means:

Unless expressly provided otherwise by regulations, any substance:

- (a) with one or more of the following intrinsic properties _
 - (i) explosiveness
 - (ii) flammability
 - (iii) a capacity to oxidise
 - (iv) corrosiveness
 - (v) toxicity (including chronic toxicity)
 - (vi) ecotoxicity, with or without bioaccumulation; or
- (b) which on contact with air or water (other than air or water where the temperature or pressure has been artificially increased or decreased) generates a substance with any one or more of the properties specified in paragraph (a) of this definition.

Hazardous wastes:

In the Hazardous Substances and New Organisms Act means waste material, including its containers or packaging, containing hazardous substances either singly or in combination with other material.

Kaitiaki:

Means guardian or protector. These may be physical, such as people, or spiritual.

From the Proposed Canterbury Natural Resources Regional Plan.

Kohanga:

Means nursery, breeding or spawning grounds.

From the Proposed Canterbury Natural Resources Regional Plan.

Long-term council community plan:

From the Local Government Act 2002 the purpose of a long-term council community plan is to:

- (a) describe the activities of the local authority;
- (b) describe the community outcomes of the local authority's district or region;
- (c) provide integrated decision-making and co-ordination of the resources of the local authority;
- (d) provide a long-term focus for the decisions and activities of the local authority;
- (e) provide a basis for accountability of the local authority to the community; and
- (f) provide an opportunity for participation by the public in decision-making processes on activities to be undertaken by the local authority.

Macroalgae:

Multicellular algae (green, blue-green and red algae) having filamentous, sheet or mat-like morphology.

On-line Medical Dictionary © 1997-98 Academic Medical Publishing & CancerWEB.

Mahinga kai:

Food and other resources, and the areas that they are sourced from.

After Tau, Goodall, Palmer, and Tau (1990) Te Whakatau Kaupapa.

Mana whenua

In the Act means customary authority exercised by an iwi or hapu in an identified area.

This definition is from Section 2 of the Resource Management Act 1991.

OR

The mana of the people is linked to the whenua (land), to Te Ao Tūroa (the natural environment) and to its capacity to sustain the people and provide for manuhiri (visitors). The term manawhenua refers to those whānau and hapū with customary linkage and rights to a site, place and or resource through tikanga (lore and custom).

This definition is from Ngai Tahu.

Natural and physical resources:

Includes land, water, air, soil, minerals, and energy, all forms of plants and animals (whether native to New Zealand or introduced), and all structures.

This definition is from Section 2 of the Resource Management Act 1991.

Ngāi Tahu Whanui:

Means the collective of the individuals who descend from the primary hapu of Ngai Tahu and Ngati Mamoe, namely, Kati Kuri, Kati Irakehu, Kati Huirapa, Ngai Tuahuriri, and Kai Te Ruahikihiki as described in Section 2 of the Te Runanga o Ngai Tahu Act 1996.

From the Proposed Canterbury Natural Resources Regional Plan.

Ngāi Tahu:

(Kai Tahu, when written in dialect form) _ the tribal group holding mana whenua in Te Waipounamu, the area from Kahuraki Point on the West Coast and Te Parinui-o-Whiti (Vernon Bluffs) on the east coast, and all places south ``until the land turns white”.

After Tau, Goodall, Palmer, and Tau (1990) Te Whakatau Kaupapa.

Papatipu Ruanga:

Means marae based runanga. The 18 Papatipu Runanga as described in the Te Truanga o Ngai Tahu Act 1996.

From the Proposed Canterbury Natural Resources Regional Plan.

Pelagic populations:

Those that live on or near the surface of a waterbody.

Reclamation:

The permanent infilling of the foreshore or seabed with sand, rock, quarry material, concrete, or other similar material where such infilling results in a surface useable for any purpose greater than two metres in width above the level of Mean High Water Springs. It includes any

embankment, but does not include any structure above water that is supported by piles, or any infilling with the purpose of providing beach nourishment.

From the Proposed Regional Coastal Environment Plan.

Ramsar:

The 1971 “Convention on wetlands of international importance, especially of waterfowl habitat” (generally referred to as the Ramsar Convention – Ramsar being the Iranian city hosting the convention). Twelve criteria cover four categories: ecological representativeness or uniqueness; presence of threatened, unusual, or endemic plant or animal species; value for maintaining genetic and ecological diversity; and presence of substantial numbers of waterfowl species.

Structure:

Means any building, equipment, device, or other facility made by people and which is fixed to land; and includes any raft.

This definition is from Section 2 of the Resource Management Act 1991.

Tangata whenua:

Means the people of the land, the people who hold the turangawaewae and the mana whenuain an area, according to tribal and hapu custom.

After Tau, Goodall, Palmer, and Tau (1990) Te Whakatau Kaupapa.

Taonga:

Treasured possessions, includes both tangible and intangible treasures, for example, the Maori language.

After Tau, Goodall, Palmer, and Tau (1990) Te Whakatau Kaupapa.

Terrestrial populations:

Those that live on land.

Turangawaewae:

A person’s right to stand on a particular piece of land or in a certain place and to speak and be heard on matters affecting them and their relationships to that land and its resources.

After Tau, Goodall, Palmer, and Tau (1990) Te Whakatau Kaupapa.