

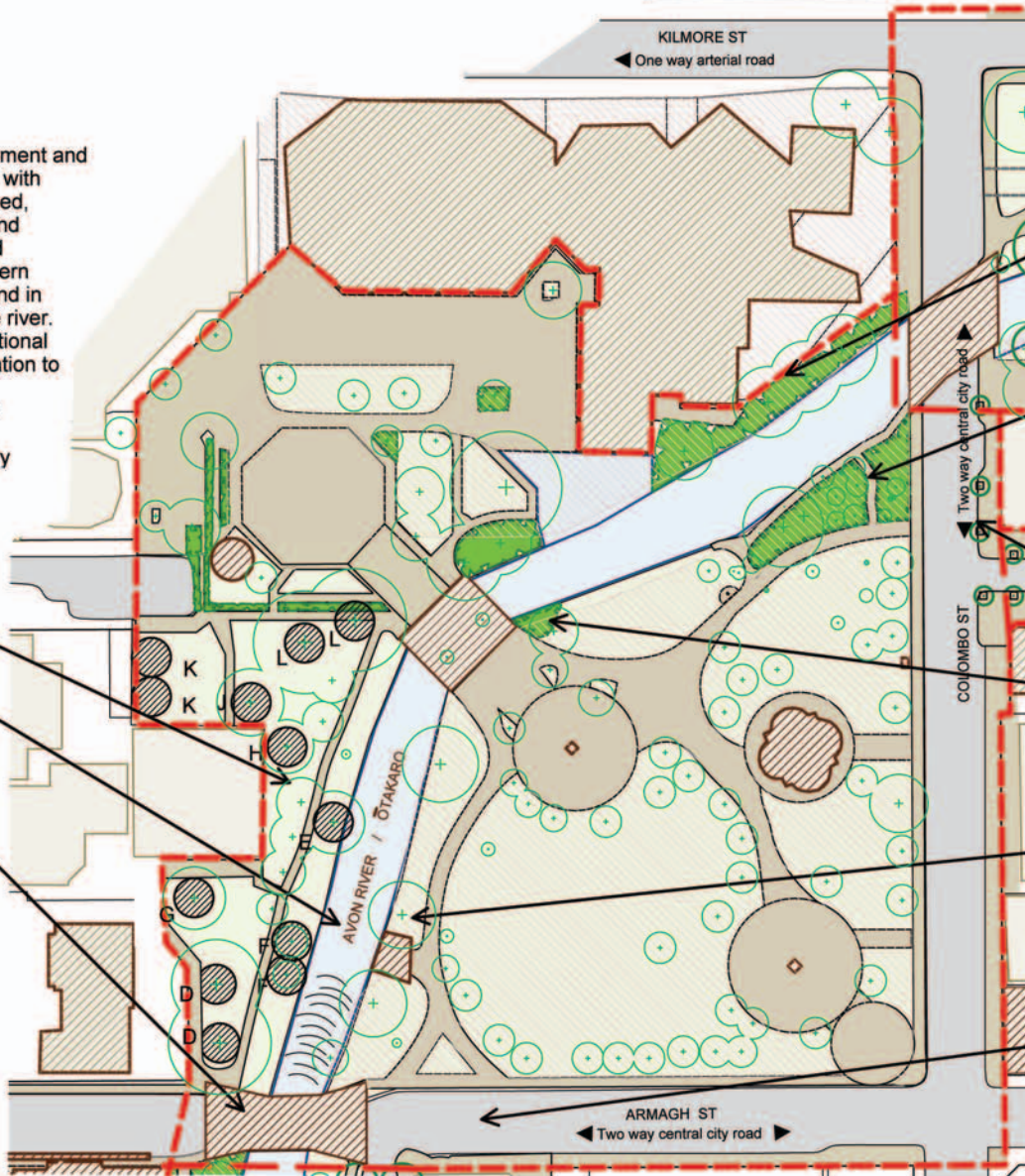
Prepare a conservation, management and interpretation plan in conjunction with Ngāi Tahu, that covers the riverbed, riverbanks and all of the public and Ngāi Tahu-owned landscape and heritage features along the northern and western berms of the river and in Victoria Square south-east of the river. Consider the introduction of additional plantings, features and interpretation to emphasise the shared cultural significance of the locality as the original market square where Ngāi Tahu traded with Canterbury Association settlers.

This berm is held by Ngāi Tahu Justice Holdings Ltd

Investigate improvements to the riffle in this part of the waterway

Prepare and implement a conservation plan for the bridge and its setting

- Thirteen trees are notable trees listed in the City Plan
- D *Aesculus hippocastanum*
 - E *Alnus glutinosa*
 - F *Cordyline australis*
 - G *Fagus sylvatica* 'Purpurea'
 - H *Sequoiadendron giganteum*
 - J *Cedrus deodara*
 - K *Taxus baccata* 'Fastigata'



Change existing ivy ground cover to indigenous riparian vegetation that represents the pre-European vegetation and to link with the existing planting beside the opposite riverbank

Establish an indigenous fern understorey under existing native plants

Establish a new pedestrian cyclist crossing linking Victoria Square to Oxford Terrace "promenade"

Plant sedges

Give priority to the protection of the weeping willows, reputedly from Napoleon's grave, and their replacement with plants propagated from them should they become unsafe

Establish a new pedestrian and cyclist crossing

KILMORE ST

◀ One way arterial road

Two way central city road

COLOMBO ST

ARMAGH ST

◀ Two way central city road ▶

AVON RIVER / ŌTAKARU