



**Christchurch City Council
1999 Community Plan
(Riccarton/Wigram)**



Christchurch City Council Community Plan

Riccarton-Wigram

1999 Edition

Published in September 1999 by the Sockburn Service Centre,
Christchurch City Council, PO Box 11-011, Christchurch. Tel: (03) 348-5119 Fax: (03) 372-2545

Cover photograph: Deans Cottage

Contents

Introduction

Introductory comments from the chairperson of the Riccarton/Wigram Community Board	4
Introductory comments from the Community Advocate	5

The Community

Map of Riccarton/Wigram wards area	6
--	---

Residents' Groups

What is a residents' group?	8
Residents groups formation and recognition	8
Service Centre support	9
Residents' Groups maps	10

Community Facilities

Community Centres and Halls	17
Out of School Care Programmes	18
Community Database	19
Libraries	20
Toy Libraries	21
City Housing	22

Sockburn Service Centre

Functions	23
Organisational Chart	24

Contents

The Community at Large

Points of Interest	25-27
--------------------------	-------

The Riccarton/Wigram Community Board

Functions	28
Terms of Reference	28
Board Meetings	29
Awards	30
Elected Members	31
Community Board Objectives	32-33
Community Board Funded Projects	34
Allocation of Project Funds	34-35

Schedule of Capital Works

Schedule of Capital Works - Riccarton Ward	36-37
Map of Programmed Works - Riccarton Ward	38-39
Schedule of Capital Works - Wigram Ward	40-42
Map of Programmed Works - Wigram Ward	44-45

Submissions

Writing Submissions	46
Community Comment	47

Introduction

Chairperson Riccarton/Wigram Community Board

The Riccarton/Wigram Community Board has an important role in representing the views of the residents of Riccarton and Wigram wards.

The Community Board has a wide range of delegated powers in relation to local matters, with an advocacy/advisory role in relation to metropolitan matters which have an effect in our local community.

The Community Board seeks the views of residents through the Council's Annual Plan process. This gives local people the opportunity to be part of a consultative process which decides what activities and projects will be funded through the next financial year. This Community Plan sets out what your Community Board will be achieving on your behalf for the current financial year, and is the local focus of a city-wide Annual Plan. Copies of the Council's Annual Plan are available from the Sockburn and Riccarton Service Centres.

Your Community Board, along with the service centre staff, welcomes the opportunity to work alongside our local community. If you have any suggestions for improving our area, or have issues or problems that we can assist with, please contact us.



Community Advocate

The Riccarton/Wigram Advocacy Team serves as part of an integrated, community-focused Council unit responsible for building relationships with citizens and communities.



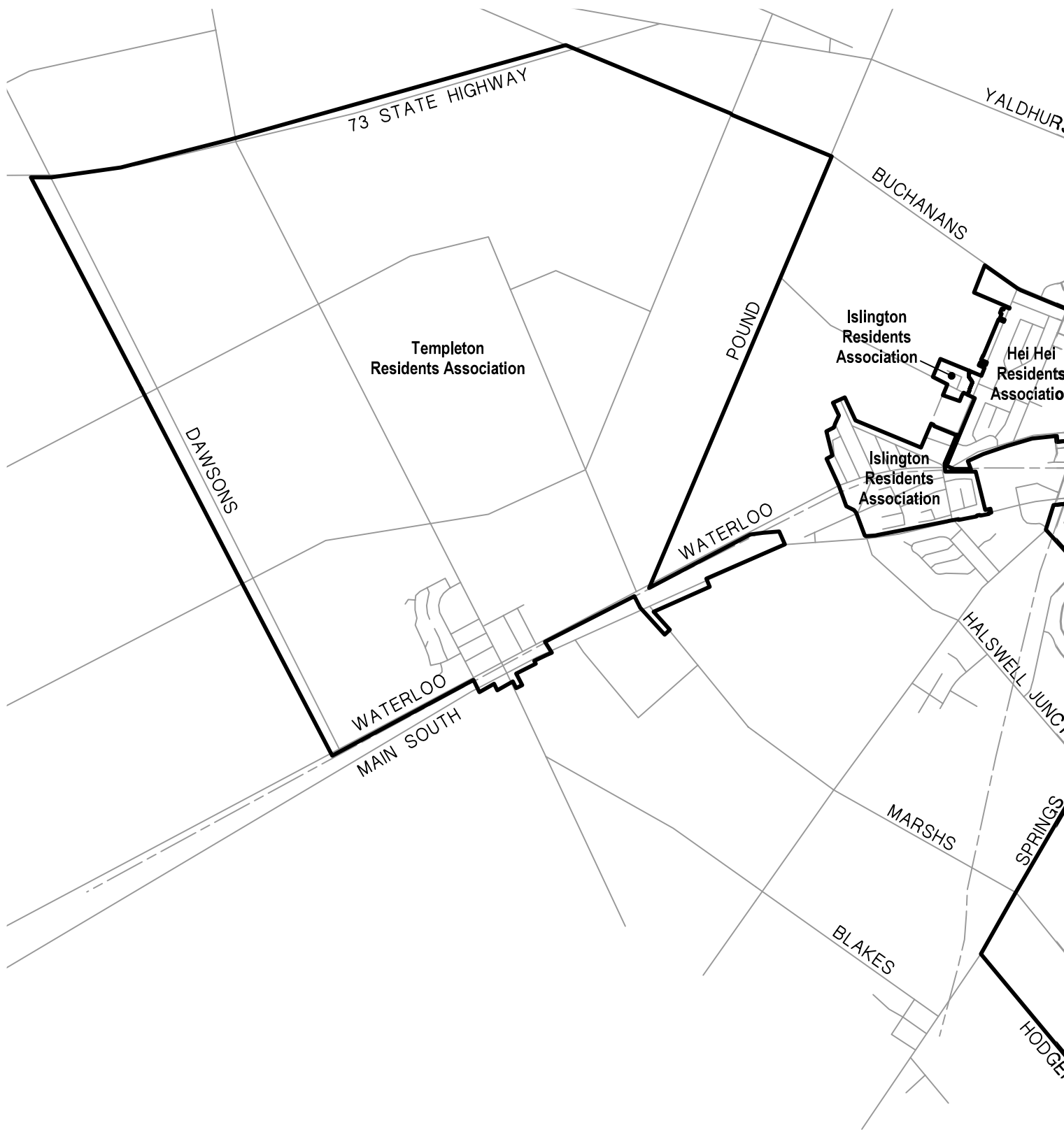
Our team is available to act as the direct link to the community for all Council functions. In this way we act as advocates for the community in ensuring that your suggestions, needs and concerns are addressed. As advocates for the Council we ensure that Council information and outcomes are known and that residents are provided with access to the Council's decision-making processes. Part of our work entails support for the Riccarton/Wigram Community Board, ie your elected members. In this role we work closely with the Board, assisting elected members in networking and discussion with a wide range of groups or individuals in the community.

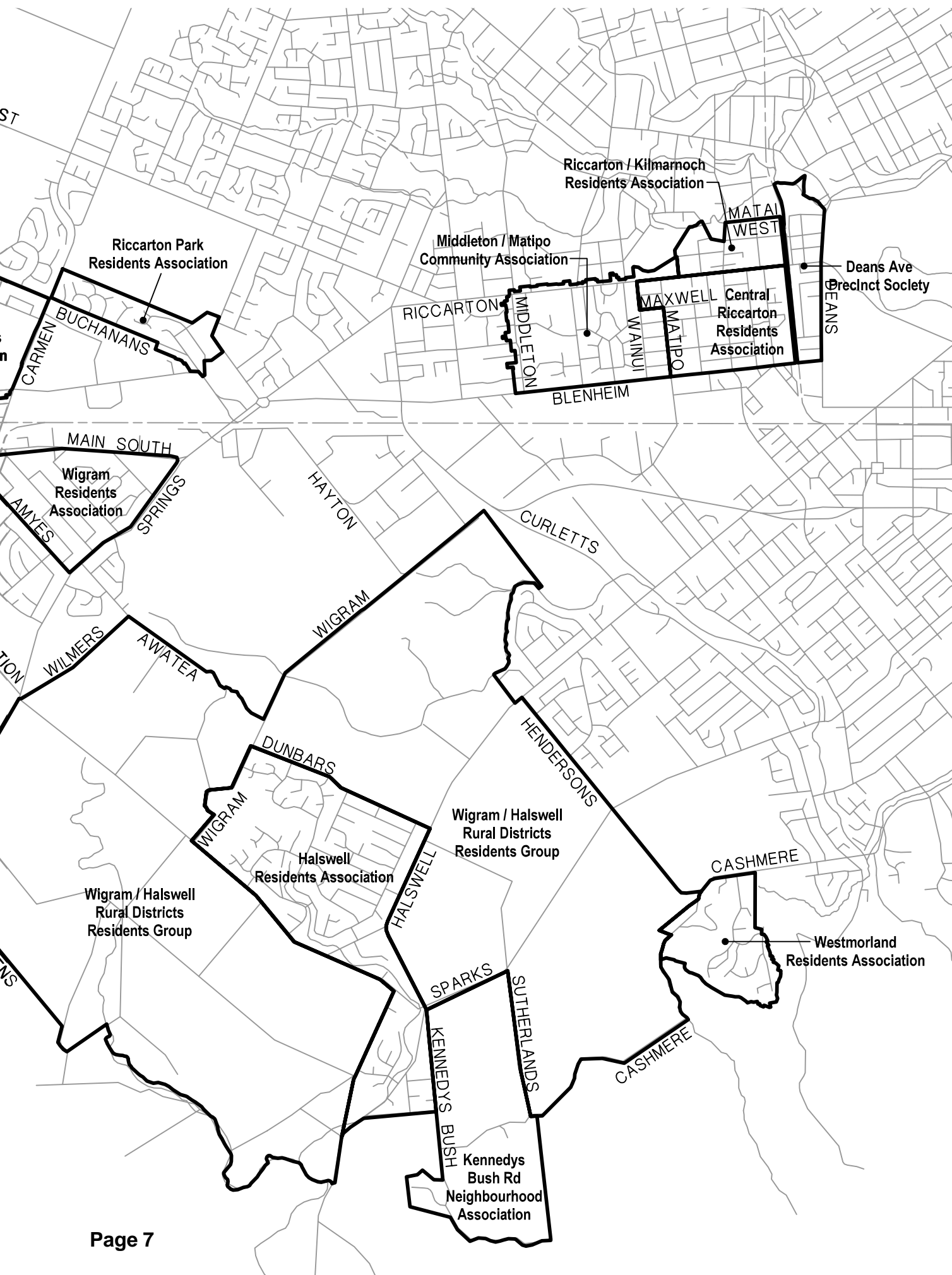
Work typically related to the above support involves the process of seeking community views on a wide range of issues, assisting with the implementation and/or overview of Council projects such as roading, parks and community support services, and assisting with the determining and prioritising of projects of a local nature. In all of this activity we also maintain strong links with our colleagues in the Council's various business units.

The Advocacy Team welcomes any enquiries on information or access to your local Community Board, or to other units of the Council.

The Team also holds a responsibility for community development at a local level. An outcome from efforts in this direction will often see us as part of your community, working together to achieve agreed ends. While the Team already has a number of established contacts and contact groups in the community, the challenge is to maintain these relationships and to enhance our network to embrace further partnership possibilities.

The Community Advocacy Team is here to provide support and guidance in building on-going relationships between the Council and the community. We welcome the opportunity to sit down with any of you to discuss any matters related to achieving this end.





Residents' Groups

What is a residents' group?

Residents' groups are set up to provide support and assistance to their neighbourhood. They have a common purpose and set out to achieve a common goal. They may be set up to provide recreation activities, eg playgroups, or in response to a perceived threat to the stability or character of a neighbourhood, eg saving an historic building.

Maps detailing the areas covered by existing residents' groups, together with contact names, are shown on pages 10 to 16.

Residents' groups formation and recognition

1. The Christchurch City Council encourages the formation of local residents' groups.
2. Local residents' groups are able to apply to the Community Board for recognition as an 'official' residents' group for the area.
3. Residents' group boundaries within each community are determined by the Community Board.
4. Such groups, upon recognition, receive the right to be consulted by the Council on all work planned within their boundaries.
5. The Council provides free typing and photocopying for official residents' groups, within limits approved by the Advocacy Team.

Residents' Groups cont'd ...

Service Centre Support

The Sockburn Service Centre, in conjunction with the Riccarton/Wigram Community Board, is able to offer the following forms of support to recognised residents' groups:

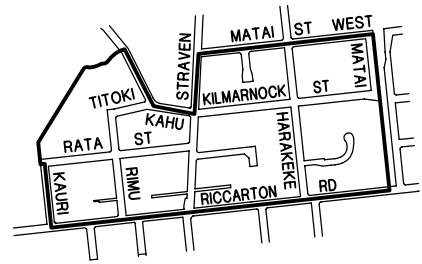
- A photocopying allowance of \$500/year.
- Typing and display work for group newsletters and notices.
- Organising meetings of residents' groups, Riccarton/Wigram Community Board and Sockburn Service Centre staff to discuss relevant issues.

The Sockburn Service Centre support of Riccarton/Wigram residents' groups is aimed at improving residents' groups' profiles and keeping members of our community informed about their community groups and initiatives.



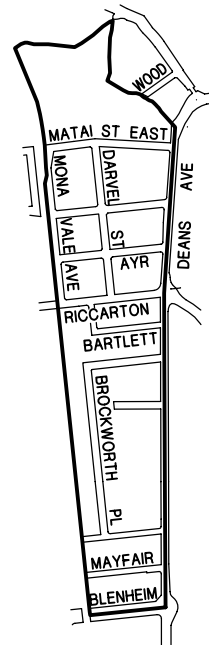
**Riccarton/Kilmarnock
Residents' Association**

John Hardie
48 Rata Street
Christchurch
343-3883



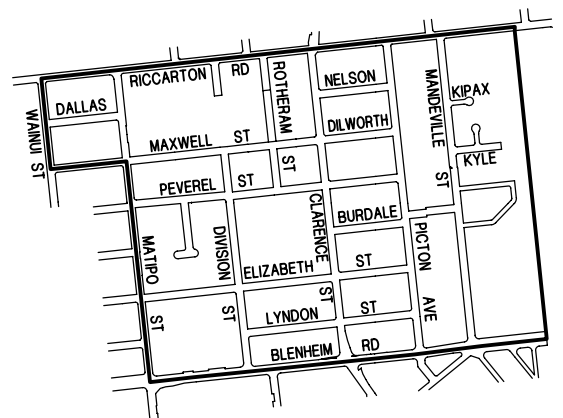
**Deans Avenue
Precinct Society**

Ms B Dawson
PO Box 8391
Christchurch
348-1238



**Central Riccarton
Residents' Association**

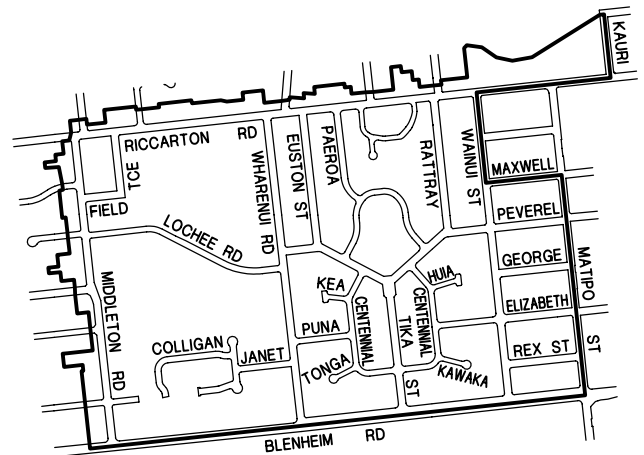
Keith Derbyshire
65 Division Street
Christchurch
348-4643
348-4644



Residents' Groups cont'd...

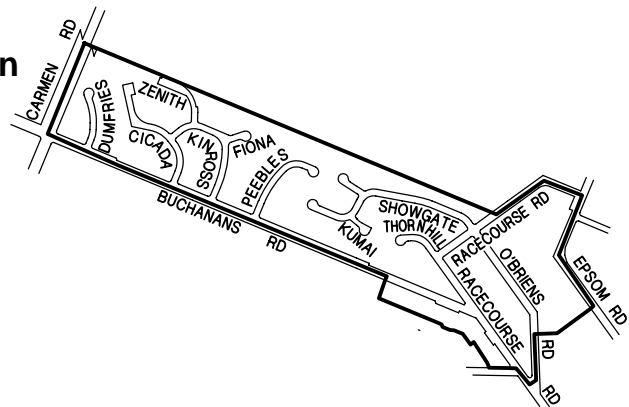
Middleton / Matipo Community Association

Justine Mouat
11 Aotea Terrace
Christchurch
332-3378



Riccarton Park Residents' Association

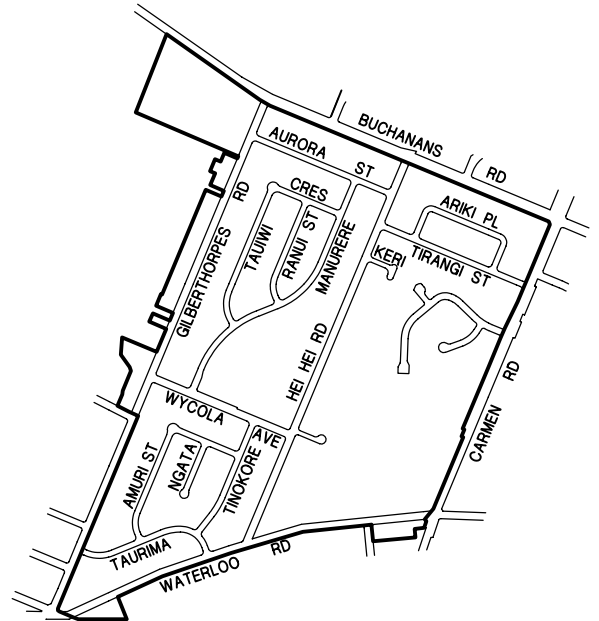
Mrs M Shimmin
16 Buchanans Road
Christchurch 4
342-9051



Residents' Groups cont'd ...

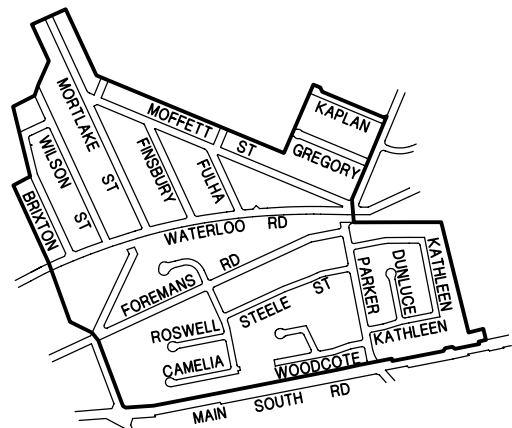
Hei Hei Residents' Association

Janet Hadley
4 Wycola Avenue
Christchurch
349-6726



Islington Residents' Association

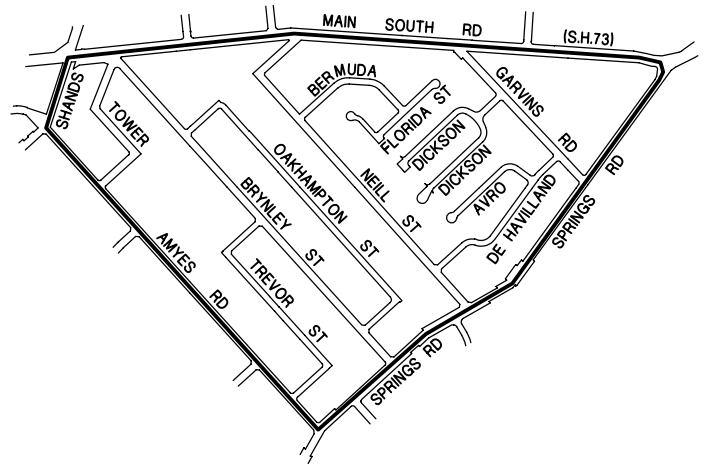
Ms M J Bradford
35 Moffett Street
Christchurch
349-4704



Residents' Groups cont'd ...

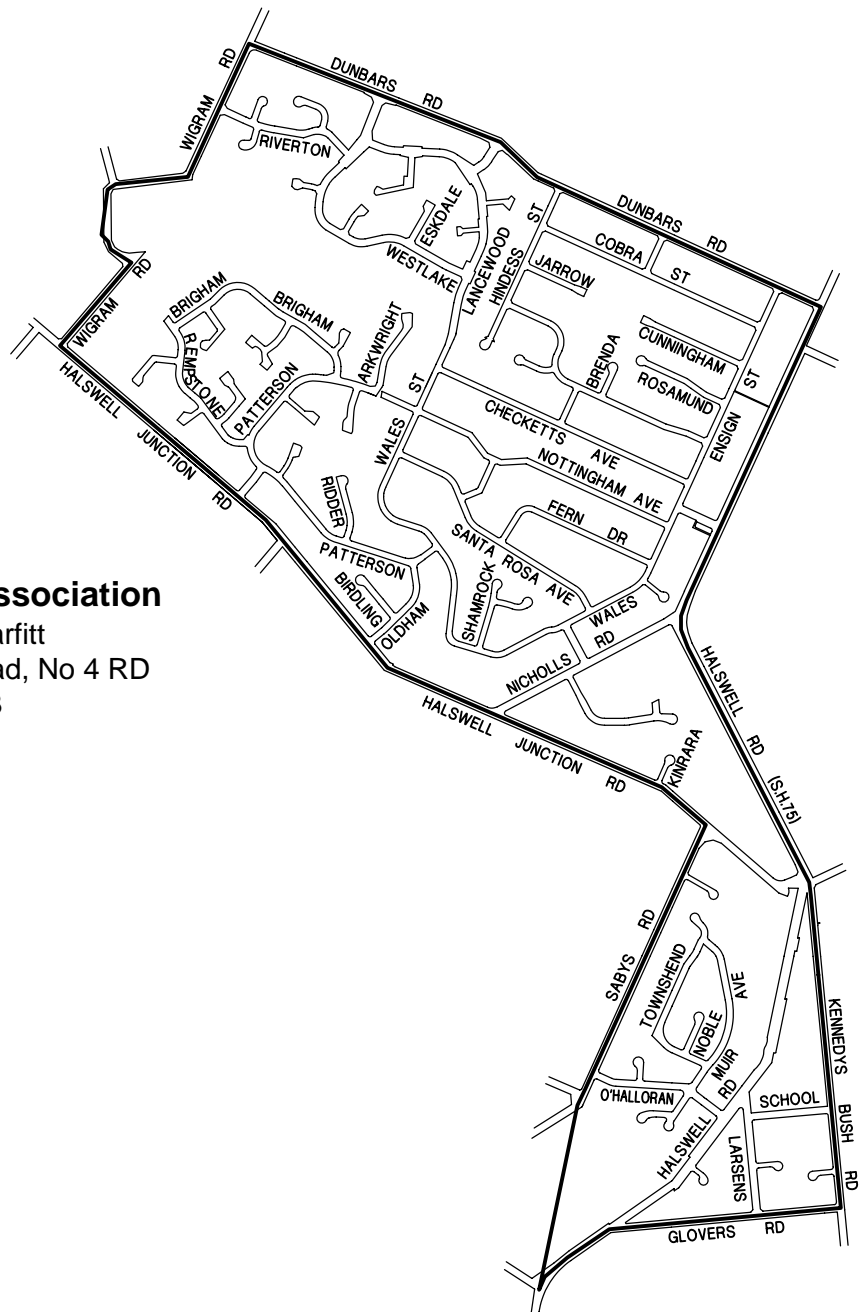
Wigram Residents' Association

Kenny Stevens
29 Bermuda Drive
Christchurch
349-7976



Halswell Residents' Association

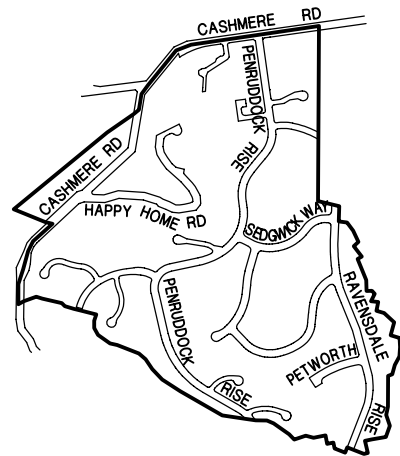
Mrs H Faye Parfitt
Ellesmere Road, No 4 RD
Christchurch 3
322-7580



Residents' Groups cont'd ...

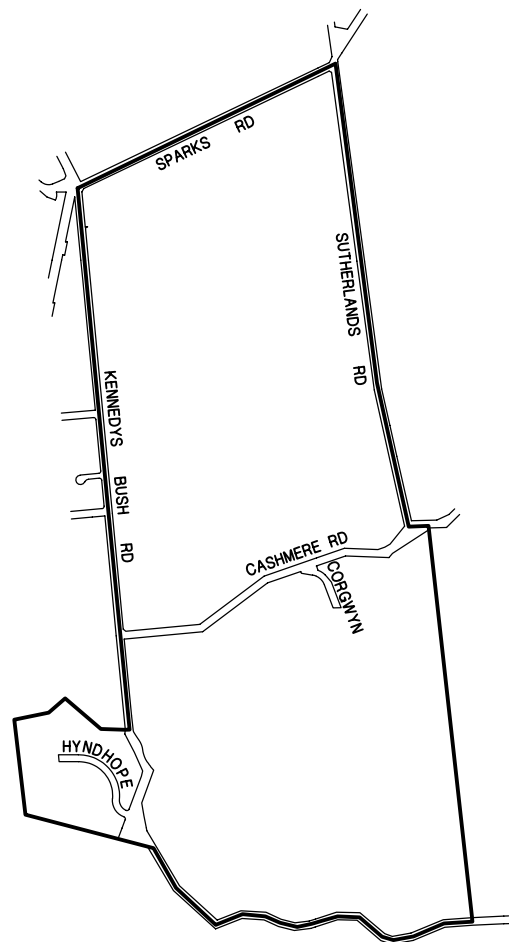
Westmorland Residents' Association

E A McNicholl
75 Penruddock Rise
Christchurch
338-1958



Kennedys Bush Road Neighbourhood Association

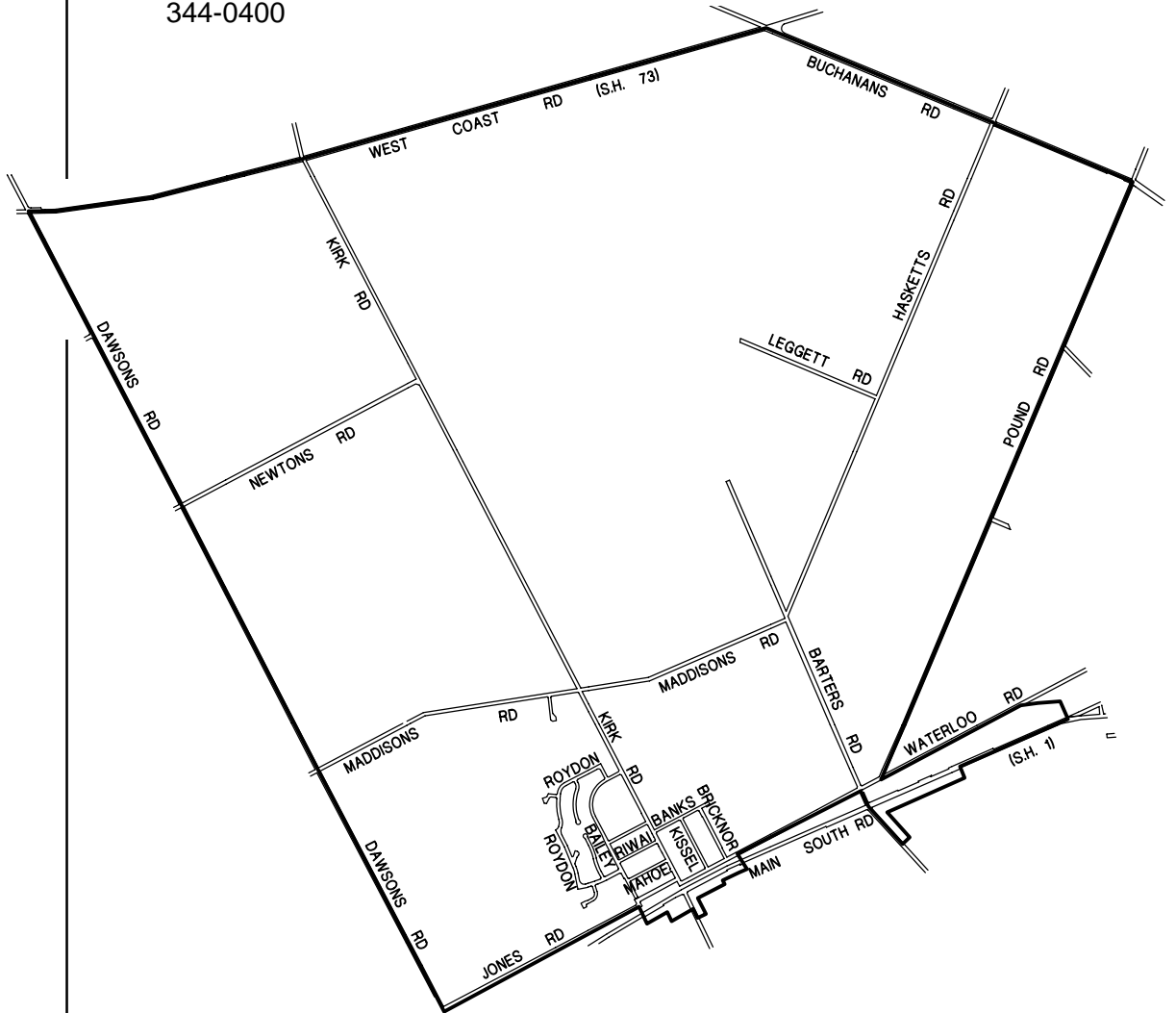
Sylvia Lukey
208 Kennedys Bush Road
Christchurch
322-8281



Residents' Groups cont'd ...

Templeton Residents' Association

Steve Hancock
4 Colchester Place
Templeton
344-0400



Residents' Groups cont'd ...

Wigram / Halswell Rural Districts Residents' Group

Mrs I Irving
225 Wigram Road
Christchurch
Ph 322-8125



Community Facilities

There are a number of community facilities throughout Riccarton/Wigram. The locations of these Council-owned or supported facilities are shown below. Many are available for hire and all have a multitude of activities reflecting the diversity of the community.



Riccarton Community Centre

Clarence Street, Riccarton

(pictured above)

For bookings
phone 348-5119

Hei Hei Community Centre

Wycola Avenue

For bookings
phone 348-5119

Waimairi Road Community Centre

Waimairi Road

For bookings
phone 348-5119

Yaldhurst Memorial Hall

Yaldhurst Road

Lyall Beard
phone 342-9643

Halswell Hall

Halswell Road

Jo Fey
phone 322-8423

Templeton Community Hall

12 Kopara Street

For bookings
phone 349-7415

Out of School Care Programmes

OSCAR programmes provide safe, supervised care for children aged 5 to 12 before school, after school and during the holidays. Some services may vary but they all aim to meet recreation, social and developmental needs of children in a fun, caring environment.

Wharenui After School Programme

(pictured below)

Wharenui Primary School
32 Matipo Street
Phone 348-0106



Hornby After School Programme

Hornby Primary School
190 Waterloo Road
Phone 349-3905

Gilberthorpe After School Programme

Gilberthorpe School
163 Gilberthorpes Road

OSCAR at Halswell

Halswell School
Halswell Road

OSCAR at Oaklands

Oaklands School
Cunningham Place

Community Database

Within the Riccarton and Wigram wards are a plethora of community groups, organisations and agencies. These vary from a local scouting branch to sporting organisations, social support agencies and hobby groups.

To assist customers in finding out what is available in this community, a database of these groups has been developed. Located at the Sockburn Service Centre, the "Community Resource Database" is able to be accessed during business hours. On this database are literally hundreds of records of community groups and organisations in this community.

If you are wanting to find out some details about a certain group, or gain an idea of what community groups are in your suburb (eg pre-school groups in Hornby) contact or call into the Sockburn Service Centre.



Story time at South Hornby Pre-School

Libraries

Mobile Library Service

Phone 389-0753

Sockburn Park, Main South Road	Thursday	9.45am-10.15am
Kirk Road at Templeton School	Thursday	10.30am-12.00noon
Harrington Park, Peverel Street	Thursday	1.30pm-2.15pm
Middleton Park, Middleton Road	Thursday	2.30pm-4.00pm

Halswell Public Library

Cnr Halswell and Sparks Roads

Hours	Monday to Thursday	10.00am-5.30pm
	Friday	10.00am-8.00pm
	Saturday	10.00am-1.00pm

Hornby Public Library *(pictured below)*

Goulding Street, Hornby

Hours	Monday/Wednesday/Friday	10.00am-5.30pm
	Tuesday/Thursday	10.00am-8.00pm
	Saturday	9.00am-12.00noon



Riccarton Volunteer Library

Riccarton Community Centre, 199 Clarence Street

Hours	Monday to Friday	12.00noon-3.00pm
	Saturday	10.00am-12.00noon

Libraries cont'd...

Sir John McKenzie Memorial Children's Library *(pictured below)*

393 Riccarton Road, Upper Riccarton

Hours	Monday to Friday	3.15pm-4.45pm
	Tuesday/Thursday	10.30am-12.00noon



Community
Facilities

Upper Riccarton Memorial Library

372 Riccarton Road

Hours	Monday-Friday	3.15pm-4.45pm
	Tuesday/Thursday	10.30am-12.00noon

Toy Libraries

Halswell Toy Library

St Luke's Church, Halswell Road

Hours	Wednesday	7.30pm-8.30pm
	Saturday	10.00am-11.30am

Hornby Toy Library

Phone 349-3109

Hours	Thursday	6.30pm-8.00pm
	Saturday	10.00am-12.00noon

City Housing

The Council has in excess of 2,600 flats ranging from studio apartments to four-bedroom units which are rented at a very affordable rate to people with limited cash assets, a proven housing need, and to those with disabilities. The flats are self-contained and City Housing maintains the buildings and grounds to a very high standard. The housing complexes are located throughout the city and applicants' preferences are taken into account when making allocations. The Council is a caring landlord and provides security of tenure while endeavouring to provide for the tenant's safety, well-being and social interaction.

Within the Riccarton/Wigram wards there are 239 units at 11 complexes, listed below.

Bartlett Street
Division Street
Nelson Street
Picton Avenue
Walsall Street
Greenhurst Courts
Weaver Courts
Fletcher Place
Halswell Courts
Wycola Courts
Templeton Courts



Bartlett Street housing complex

Information is available from the Sockburn Service Centre or from the City Council Housing Office, situated on the ground floor of the Civic Offices in Tuam Street.

Sockburn Service Centre

Functions

The Sockburn Service Centre is located at 149 Main South Road.

The Service Centre, which is one of six throughout the city, is set up to deliver a range of City Council public services to the residents of Christchurch and visitors.

The Service Centre is open from 8.00am - 5.00pm, Monday to Friday.

Services available include:

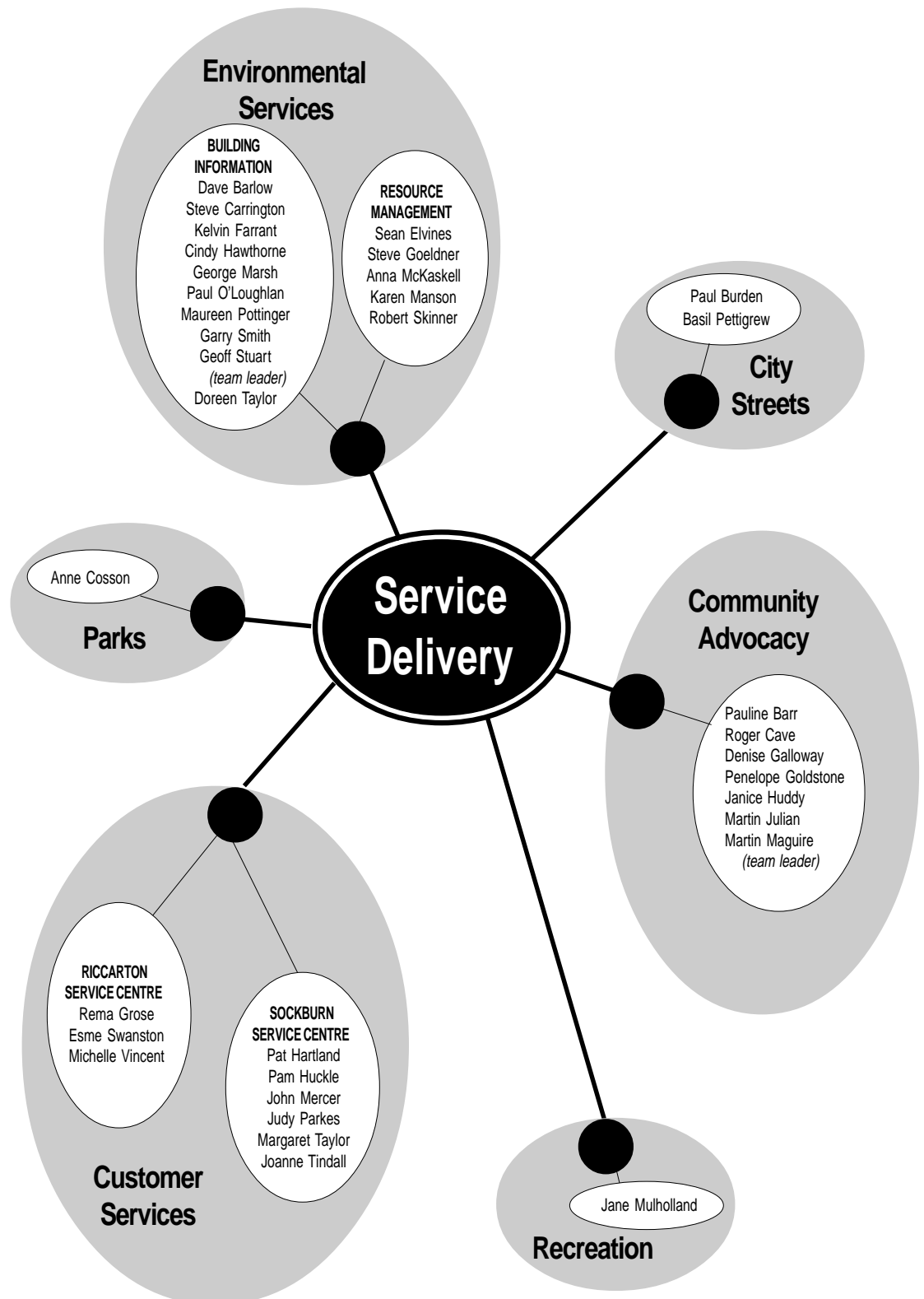
- Advisory services covering community activities and facilities, sports, recreation and funding.
- Information and advice on bylaws, parks, roading and traffic related matters.
- Counter services, including general enquiries and receipting of payments to the Council.
- Processing of building and resource consents.
- Investigations into environmental health complaints and nuisances.



Phone (03) 348-5119
Fax (03) 372-2545 - Administration
(03) 372-2539 - Building Consents and Resource Management
Postal PO Box 11-011, Sockburn, Christchurch

Sockburn Service Centre

Organisational Chart as at July 1999



The Community at Large

Riccarton Bush

Riccarton Bush originally covered 55 acres before half was given by the Deans brothers to the Canterbury settlers in 1850 for timber. A dying wish expressed by John Deans in 1854 that the bush be preserved was honoured by the Deans family in 1914 when the surviving 15 acres was gifted to 'the people of Canterbury'.

The bush is the last remnant of a forest type that once covered large areas of the Canterbury Plains.

Kahikatea - New Zealand's tallest native tree - is the dominant species. A boardwalk takes visitors alongside one specimen, estimated to be 700 years old - the oldest living thing on the Plains...



Deans Cottage

Deans Cottage, built in 1843 from pit-sawn timber cut in Riccarton Bush, is the oldest building on the Plains.

The cottage was the last home the pioneering Deans brothers shared together. William drowned in 1851 on a journey to Australia to buy sheep and John died in the cottage in 1854 after contracting tuberculosis.

Riccarton House

Riccarton House is a gracious Victorian/Edwardian mansion built in three stages by the Deans family.

As well as being full of architectural interest and contrast, the house represents the fascinating social history of Canterbury's founding family.

The original, early colonial, part of the house was built in

1856 for Jane Deans and when her son, John II, came of age in 1874 a second stage, in typical Victorian style, was added.

John II married Catherine Edith Park in 1879 and by 1897 the couple had a family of 12 children. In 1900 the final, and major stage of Riccarton House, was built.

Visitors are welcome. Within the house a detailed brochure 'The Story of Riccarton House' is available.



The Community at Large cont'd...

University of Canterbury

The University of Canterbury, New Zealand's second oldest university, was established in 1873. Since 1975 it has been housed on a 76 hectares campus in Ilam. It offers undergraduate and post-graduate courses in some 50 disciplines for approximately 12,500 students and has a staff of 1,300.

Each year some 3,000 students graduate, about 350 of them with post-graduate qualifications.

Two of the University of Canterbury's most distinguished graduates are Ernest Rutherford, the father of atomic science, and

Apirana Ngata, the first Maori graduate, whose faces grace New Zealand's highest value bank notes, the \$100 and \$50 respectively.



Canterbury Agricultural Park

Canterbury Agricultural Park is an exciting new and versatile 100 hectare outdoor exhibition venue, easily capable of coping with a crowd of 100,000 persons and their cars.

With Stage One completed, features include two superb outdoor and embanked entertainment areas, a well appointed indoor 300 seat auditorium, and all the on-site facilities needed to manage any outdoor event imaginable.

If your outdoor event plans include Christchurch, Canterbury Agricultural Park is a must.

Christchurch College of Education

Established in 1877, there are over 2,800 equivalent full-time students enrolled currently at the College, with staff numbering over 400.

The majority of full-time students on the campus are those training to become teachers

in Early Childhood Centres, Kindergartens, Primary Schools or Secondary Schools.

The College, through its Teacher Support Services based at Hornby, provides consultation, advice and support to teachers and school Boards throughout Canterbury.

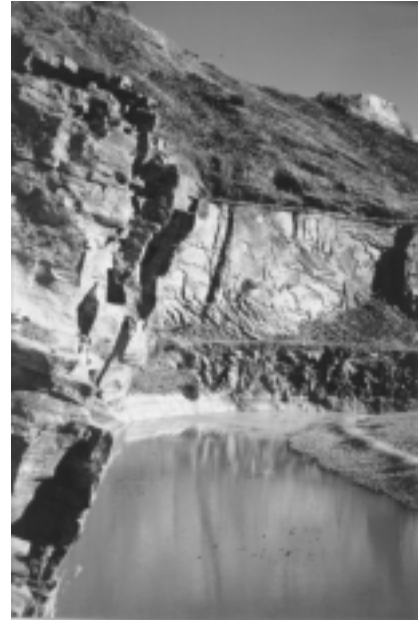


The Community at Large *cont'd...*

Halswell Quarry Park

is a unique feature in Canterbury. Located off Kennedys Bush Road and covering 67 hectares, it is situated on the western edge of the Port Hills. It is rich in history and has played a significant role in the formation of Christchurch for streets and buildings. There are extensive walks throughout the grounds which provide a range of experiences and a variety of views out to the Southern Alps, Canterbury Plains and Lake Ellesmere. Sister City plantings are currently being developed in celebration of the new millennium. Consider taking a picnic lunch to the picnic area and discover the wonderful assets being developed at Halswell.

Enquiries please phone John Moore 322-7126.



Westlake Reserve Development

Converted from a waste land of old shingle pits, Westlake Reserve, with entrances off Westlake Drive, Wigram Road, Brigham and Lancewood Drives, is fast becoming a recreational area that provides something for everyone.

Two lakes are a major feature of the reserve. The lake margins and stream banks have been extensively planted with native species to benefit both wildlife and recreators.

Westlake Reserve has been developed in harmony with ecological awareness, as is apparent in the lakeside plantings. The Rotary Clubs of the Garden City have also adopted Westlake Park and have been very involved in the development in association with Japanese sister city affiliations. This is apparent with plantings of flowering cherries around the main lake edge.

Soccer, cricket fields and play equipment are available, with toilets nearby. These cater for both organised sports users and casual visitors to the reserve. Westlake Reserve is currently



being developed and will provide a wonderful asset for today's and future generations of Wigram to enjoy.

Riccarton/Wigram Community Board

Functions

The Board comprises six directly elected members and three members (Councillors) appointed by the Council, giving a total of nine members.

Community Boards undertake tasks delegated by the City Council and also have input into the Council's budget process. Community Boards have an obligation to communicate with community organisations and special interest groups. They have an overview of road works, water supply, sewerage, stormwater, drainage, parks, recreational facilities, community activities and traffic management within their community.

The Community Board is not a separate authority. It is part of the elected structure of the Council and reports each month to the Council in the same way as the Council's standing committees.

Terms of Reference

1. All matters requiring elected member consideration referred directly to it unless there is a clear metropolitan reason for not doing so.
2. A continuing involvement in the functional areas of streetworks, local traffic engineering, refuse collection, elderly persons' housing, local parks, community activities and recreation activities.
3. A policy and monitoring overview of local aspects of streetworks, parks, traffic, engineering, community activities and regulatory functions.
4. The preparation of an annual submission to the Annual Plan process, and to determine matters relative to the discretionary sum approved by the Council for the community area.
5. The right and duty of active liaison with residents/business/special interest groups in the community, with the particular objective of expanding the existing residents groups programme.
6. An on-going obligation to keep the Council informed as to community aspirations and level of satisfaction with the service provided.
7. Advice to standing committees on local implications of all metropolitan projects which have particular impacts on the community in question.
8. Advice to standing committees on local implications of such metropolitan projects which have city-wide impacts as are referred to community boards for comment.
9. Development of programmes and plans for achieving community development, social well-being and community safety outcomes at the local level, within the framework developed by the City Council.

Riccarton/Wigram Community Board

Board Meetings

The Board meets eleven times a year at the Sockburn Service Centre, at 5.00pm on the first Wednesday of the month. The date, time and location of meetings are publicly advertised. Additional meetings are held on an as-required basis.

Riccarton/Wigram Community Board Meeting Dates 1999/2000

Wednesday 1 September 1999
Wednesday 6 October 1999
Wednesday 3 November 1999
Wednesday 24 November 1999
Wednesday 2 February 2000
Wednesday 1 March 2000
Wednesday 5 April 2000
Wednesday 3 May 2000
Wednesday 7 June 2000

Speaking Rights

The Community Board will receive deputations at the beginning of each meeting. If there is an issue that you wish to bring before the Board please telephone the Community Secretary.

A maximum of two speakers is heard for each issue and they are given a total of five minutes each in which to address the board, followed by any questions that Board members may wish to ask.

Community Service Awards

Certificates are awarded each year to individuals or groups in recognition of voluntary service given which benefits residents or organisations within the Riccarton/Wigram community. The areas of service include youth activities, aged, education, welfare, recreation, religious and community development.

Nominations are sought in May and the awards are presented at a ceremony in August.

Youth Awards / Development Scheme

The Service Centre also has funds for young persons who seek financial assistance for personal development courses such as Outward Bound, leadership programmes, sporting representation etc. Applicants must live within the Riccarton/Wigram area and be aged between 15 and 24 years.

Applications are called for throughout the year.

Community Pride Garden Awards

The Community Pride Garden Award Scheme is a Council initiative to acknowledge the contribution made to the Garden City image of Christchurch by many private residential properties. Gardens are selected for these awards as part of the street competition which is a partnership between the Christchurch City Council and the Christchurch Beautifying Association. The assessments are undertaken during the months of December and January and are based on the following:

- . Evidence of effort or improvements made to the garden and the effect on the streetscape
- . Overall tidiness of property/garden and evidence of community pride
- . Horticultural/landscape impact of garden on street.

The owners of gardens selected are presented with a certificate which acknowledges the effort and contribution made by the residents to maintaining the Garden City image of Christchurch. Householders who wish to enter into garden competitions may do so by entering one of the competitions run by the Canterbury Horticultural, or Beautifying Associations.

Elected Members

Riccarton Ward



Cr PADDY AUSTIN
97 Fendalton Road
Christchurch

Ph 351-9511
Fax 351-9531



NEVILLE BENNETT
27 Harakeke Street
Christchurch

Ph 348-2233 (hm)
364-2086 (wk)
Fax 348-2274 (hm)



HELEN BROUGHTON
25 Rata Street
Christchurch 4

Ph 348-1458 (hm)
343-1251 (wk)
Fax 348-8640 (wk)



Cr DAVID BUIST
PO Box 8155
Christchurch

Ph 348-2527 (hm)
086809607 (pager)
Fax 348-2527



ALISON WILKIE
30a Strowan Road
Christchurch

Ph 355-3363 (hm)
355-2442 (wk)
Fax 355-2107

Wigram Ward



MARY CORBETT
70a Brigham Drive
Christchurch 3

Ph 322-4116
Fax 322-4117



Cr ISHWAR GANDA
76 Patterson Terrace
Christchurch 3

Ph 322-6023 (hm)
348-7364 (wk)
Fax 348-8357 (wk)



LESLEY KEAST
(Deputy Mayor)
27 Boston Avenue
Christchurch 4

Ph 349-6715 (hm)
371-1564 (wk)
Fax 349-6413 (hm)



MIKE MORA
(Chairperson)
28 Moffett Street
Christchurch 4

Ph 349-9438 (hm)
349-2289 (wk)
Fax 349-2289 (wk)



BOB SHEARING
PO Box 16-291
Christchurch

Ph 342-5546 (hm)
348-5420 (wk)
Fax 348-5420 (wk)

Community Board Objectives

Public Accountability

Objectives are set out in the Council's Corporate Plan and Budget and are reviewed annually.

The Board has the following objectives for 1999/2000, with the performance indicators following each objective to be used to measure outcomes:

1 To advocate for the Riccarton/Wigram Community

- To represent community concerns to other agencies, eg Council, Regional Council and Central Government, within community agreed timeframes.
- By monitoring council committee activities on a monthly basis to assess the impact of council decisions on our local community.

2 To develop and maintain dialogue with the Riccarton/Wigram community.

- Hold two meetings per year involving representatives of all official residents groups.
- Attend Riccarton and Hornby liaison meetings at least five times per year.
- Provide monthly opportunities for public participation in Board committee meetings.
- Hold one public meeting to invite participation in the annual plan process.
- Hold at least one public meeting per year per ward to seek community views.
- Attend at least two school cluster meetings.

3 To promote a healthy Riccarton/Wigram community

- Provide \$3,000 to assist at least six community programmes which are targetted to the promotion of healthy lifestyles.
- A 5% increase in participation in activity programmes in the community.

4 To use the Strengthening Community Action Plan to promote a safer community in Riccarton/Wigram

- Monitor the implementation by way of six-monthly reviews.
- Maintain at least five different community representatives on the core group.

Community Board Objectives *cont'd ...*

- 5 To promote a greater understanding in the community of the Riccarton/Wigram Community Board.**
 - Three bi-monthly information pages via community newspaper, and review this December 1999.

- 6 To implement the outcomes of existing research which addresses the social well-being needs in the Riccarton/Wigram community.**
 - Implement at least the top two priorities identified in the following research:
Upper Riccarton, Youth, Broomfield Hei Hei, Out of School Care.
 - Consider the findings of the Asian Youth Research Project.

- 7 Promote and improve cultural awareness and understanding within the Riccarton/Wigram area.**
 - Establish local contact through the Ethnic Council and Refugee and Migrant Forum and similar groups.
 - Assist in the provision of at least one community cultural event.

- 8 To improve the natural and built neighbourhood environment in Riccarton/Wigram.**
 - Meet with appropriate business units of Council and Canterbury Regional Council on an annual basis to discuss issues of mutual interest and concern.
 - Advocate for increased funding for the implementation of Neighbourhood Improvement Plans and Local Area Traffic Management Schemes.
 - Meet, at least once, with Christchurch City Council business units and Canterbury Regional Council to discuss issues of natural resources (eg air, water) as they affect the Board area.
 - Enhance the streetscape environment by initiating at least six street tree planting programmes.
 - Address the (identified) shortfall in green open spaces in the Riccarton ward.
 - Continue a programme of park enhancement, eg by placement of active/recreational equipment and/or landscaping improvements.

Community Board Funded Projects

The Community Board has \$300,000 project funding for allocation each year. The major part of these funds, \$257,500, has been allocated at a special meeting held in March. \$42,500 is retained as a **Discretionary Fund** for allocation to smaller projects throughout the year.

These discretionary funds can be applied for by writing to the Community Board, giving a full and detailed explanation of what the funds are needed for and the benefit that your group, organisation or the community will get from the funds. Providing a current balance sheet and details of any monies raised yourselves would also be useful.

The Board has reasonably flexible guidelines as to how it allocates these funds, although priority will be given to areas or issues that are specified in its objectives for the year.

If you have any questions on the Community Board's funding, please telephone the Community Secretary (telephone 348-5119).

Allocation of Project Funds

Wharenui After School Programme	\$25,000
(Board share of a financial partnership with the Service Centre) to provide a full year of contracted after school programmes based at Wharenui Primary School	
Hornby Youth Worker	\$37,000
Second year funding based at the Hornby Primary School, for a youth worker (this position arose out of a major youth needs research project).	
Community Development Workers (Broomfield and Hei Hei)	\$43,000
A partnership with a community-based organisation to provide two part-time community development workers in north Hornby. These positions arose out of a community needs research project.	
Riccarton Youth Worker Subsidies	\$20,000
Continuation of a partnership with two Riccarton-based youth workers.	
Upper Riccarton Needs Analysis Outcomes	\$10,000
Following extensive needs research a major outcome was to support the current community house in Hillary Crescent.	

Community Board Funded Projects *cont'd...*

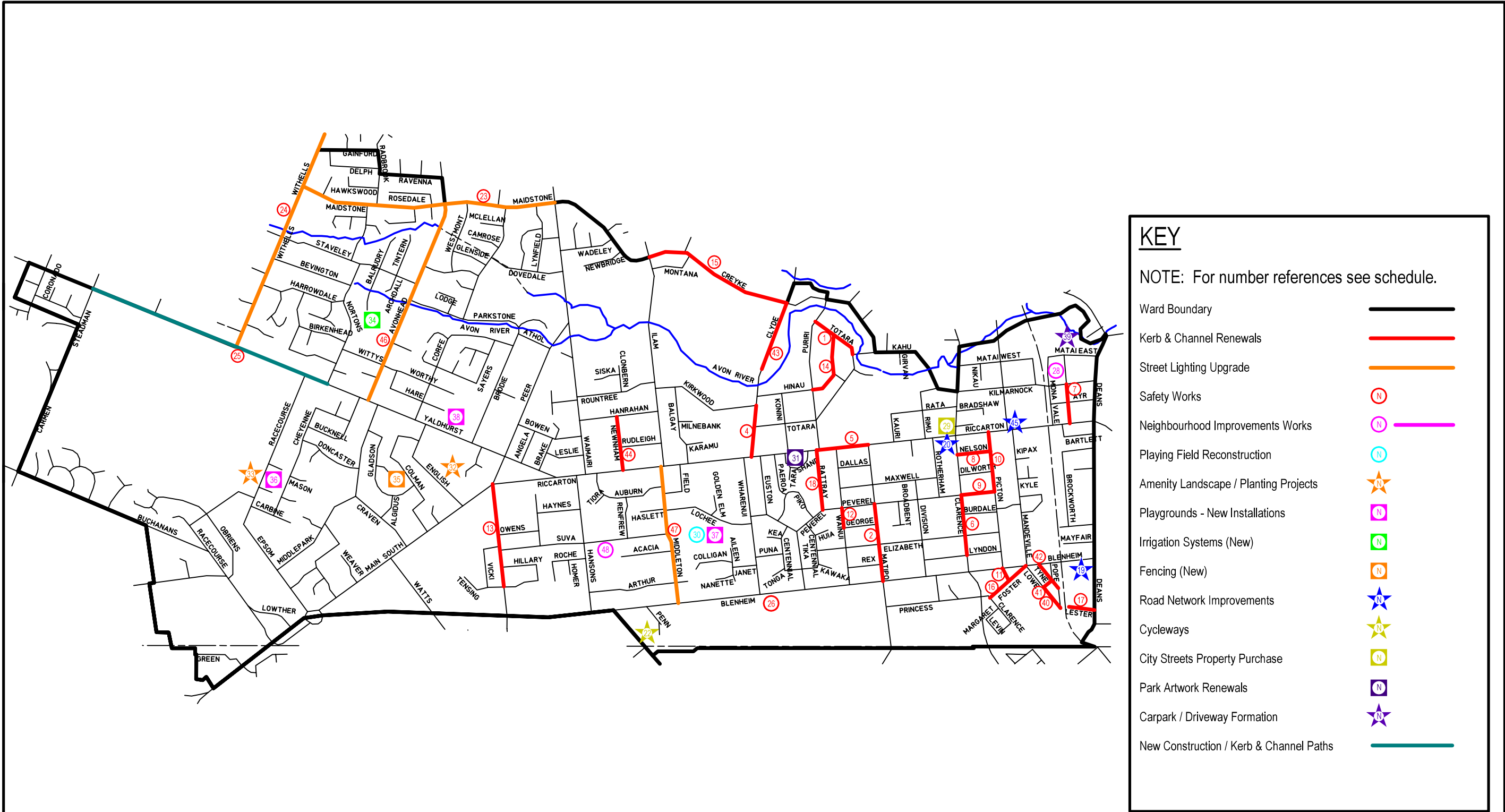
Community Initiatives Fund	\$10,000
A fund of monies held to meet local community initiative requests that are received during the year.	
Outdoor Recreation Provision Fund	\$20,000
A fund to address the growing needs for suitable recreational facility equipment for youth.	
Community Events Fund	\$5,000
To enable suburban events (eg SummerTimes, cultural days) in the form of "community fun days" to be run.	
Community Programmes Fund	\$5,000
To enable youth programmes to be held, targeting local young persons.	
Year of the Older Person	\$5,000
1999 has been identified as "Year of the Older Person"; these funds will assist in community projects/programmes.	
Tower Street Splitter Island	\$9,000
Installation of a splitter island at the Amyes Road intersection.	
Suva Street Raised Pedestrian Platform	\$25,000
Sited at Middleton Grange School, to assist in pedestrian safety and traffic (speed) control.	
Street Management Projects Funds	\$20,000
A fund to enable local safety management works to be installed.	
Native Trees Proposal	\$10,000
A Year 2000 project aimed at planting native trees at selected community sites.	
Streetscape Enhancement Fund	\$10,000
A fund to enable street tree planting (sites to be identified) as part of a streetscape enhancement initiative.	
Community Pride Garden Awards	\$2,000
To acknowledge local house gardeners for their participation in the encouragement of community pride and the Garden City image.	
Canterbury/Westland Racing Owners Association Inc Grant	\$1,500
To assist the Association in the establishment of a racing museum at Riccarton Park Raceway.	
Discretionary Fund	\$42,500
Balance held for distribution during 1999/2000.	
Total Approved	\$300,000

SCHEDULE OF CAPITAL WORKS - RICcarton WARD

Map Ref	Description	1999/00	2000/01	2001/02	2002/03	2003/04
R41	Andersons Rd (Lowe - Tyne) Kerb and Channel Renewals			5,000	10,000	
R22	Annex Road Cycle Route Cycleways			111,000		
R46	Avonhead Rd (Roydvale - Yaldhurst) Street Lighting Upgrading				87,720	
R26	Blenheim Rd Safety Works	322,000				
R19	Blenheim Rd Overbridge Road Network Improvements	200,000				
R20	Clarence/Riccarton/Straven Intersection Road Network Improvements			200,000		
R6	Clarence St (Peveler - Lyndon / Bth) Kerb and Channel renewals	5,100	336,600			
R4	Clyde Rd (Riccarton - Kirkwood / Wst) Kerb and Channel renewals	341,200				
R43	Clyde Rd (University - Creyke) Kerb and Channel Renewals				30,000	250,000
R35	Colman Reserve Fencing (New) <i>(Road frontage barrier)</i>					2,000
R15	Creyke Rd (Ilam - Clyde / Bth) Kerb and Channel renewals		5,100	126,400	550,200	
R13	Curletts Rd (Main South - Tensing / Bth) Kerb and Channel renewals		7,038	573,200		
R7	Darvel St (Riccarton - Kilmarnock / Bth) Kerb and Channel renewals	214,200				
R34	Ferrier Park Irrigation Systems (New) <i>(Auto irrigation for sports fields)</i>					30,000
R16	Foster St (Clarence - Lowe / Bth) Kerb and Channel renewals			5,355	375,978	
R33	Gloaming Reserve Amenity Landscape/Planting Projects <i>(Shrub planting along fence)</i>			3,500		
R36	Gloaming Reserve Playground Renewal <i>(Renew equipment)</i>	17,000				
R14	Hinau St (Totara - Puriri / Bth) Kerb and Channel renewals		3,876	155,000	300,000	
R32	Holmes Park Amenity Landscape/Planting Projects <i>(Additional planting)</i>			4,500		
R17	Lester Lane (Deans - End / Bth) Kerb and Channel renewals			2,754	163,600	
R40	Lowe St (Tyne - End) Kerb and Channel Renewals		2,448	163,200		
R23	Maidstone (Waimairi - Withells) Street Lighting - Safety		87,720			
R45	Mandeville/Riccarton and Riccarton Rd Road Network Improvements					280,000
R2	Matipo St (Peveler - Blenheim / Bth) Kerb and Channel renewals	224,400	175,542			
R30	Middleton Park Playing Field Reconstruction		30,000			
R37	Middleton Park Playground Renewal <i>(Renew equipment)</i>					25,000
R47	Middleton Rd (Riccarton - Blenheim) Street Lighting Upgrading					26,000

SCHEDULE OF CAPITAL WORKS - RICCARTON WARD

Map Ref	Description	1999/00	2000/01	2001/02	2002/03	2003/04
R39	Mona Vale					
	Carpark/Driveway Formation				75,000	
R28	Mona Vale/Kilmarnock					
	Neighbourhood Improvement Works		918	30,600		
R8	Nelson St (Picton – Clarence / Bth)					
	Kerb and Channel renewals		2,754	163,600		
R44	Newnham Tce					
	Kerb and Channel Renewals				20,000	175,000
R9	Peveler St (Clarence – Picton / Bth)					
	Kerb and Channel renewals	2,142	143,200			
R11	Picton Ave					
	(Blenheim – Foster / Bth) K&C renewals	1,071	91,800			
R10	(Riccarton – Peveler / Bth) K&C renewals					
			4,437	295,800		
R18	Ratray St (Peveler – Riccarton / Bth)					
	Kerb and Channel renewals					3,978
R5	Riccarton Rd (Matipo – Ratray / Sth)					
	Kerb and Channel renewals	132,600				
R29	Riccarton Rd/Straven Rd					
	Property Purchase	790,000		550,000		
R31	Shand Reserve Fountain					
	Park Artwork Renewals		5,000			
R48	Suva St at Middleton Grange					
	Neighbourhood Improvements Works	50,000				
R1	Totara St (Kahu - Puriri / Nth)					
	Kerb and Channel renewals				20,000	230,000
R42	Tyne St (Blenheim - End)					
	Kerb and Channel Renewals			1,530	142,000	
R38	Upper Riccarton Domain					
	Playground Renewal (Renew equipment)					30,000
R12	Wainui St (Peveler – George / Est)					
	Kerb and Channel renewals	765	71,400			
R24	Withells Rd (Yaldhurst – Avonhead)					
	Street Lighting – Safety					80,580
R25	Yaldhurst Rd (Nortons – Fovant)					
	New Construction/New K&C/Paths	204,000	408,000			



KEY

NOTE: For number references see schedule.

- Ward Boundary
- Kerb & Channel Renewals
- Street Lighting Upgrade
- Safety Works N
- Neighbourhood Improvements Works N
- Playing Field Reconstruction N
- Amenity Landscape / Planting Projects N
- Playgrounds - New Installations N
- Irrigation Systems (New) N
- Fencing (New) N
- Road Network Improvements N
- Cycleways N
- City Streets Property Purchase N
- Park Artwork Renewals N
- Carpark / Driveway Formation N
- New Construction / Kerb & Channel Paths

RICCARTON WARD - PROGRAMMED WORKS

SCHEDULE OF CAPITAL WORKS - WIGRAM WARD

Map Ref	Description	1999/00	2000/01	2001/02	2002/03	2003/04
W3	Annex Road Cycle Route			111,000		
W72	Balcairn Reserve					
	Playground Rrnewal	17,000				
W26	Branston Park					
	Irrigations Systems (Replacements) <i>(Renew irrigation system)</i>				20,000	
W48	Branston Park					
	Amenity Landscape/Planting Projects <i>(Additional planting)</i>				4,500	4,500
W8	Branston St (Amyes – Boston)					
	Street Lighting - Safety	7,140				
W6	Brynley St (Springs – Main South)					
	Street Lighting - Asset Improvements	10,200				
W28	Carmen Reserve					
	New Reserves Development <i>(Planting, path)</i>	7,500				
W51	Lighting	7,500				
	<i>(Lighting paths)</i>					
W65	Buildings/Equipment – New			12,000		
	<i>(Play structure)</i>					
W10	Cashmere Rd (Brookville – Happy Home)					
	New Construction/New K&C/Paths	51,000				
W67	Denton Oval – Building Upgrade					
	Indoor Stadia				20,000	
W29	Francis Reserve					
	New Reserves Development	9,500	5,000			
W71	Gibraltar Farm Park					
	New Reserves Development	19,000	14,500			
W25	Halswell Domain					
	Fencing (Replacements) <i>(Replace driveway barriers)</i>	10,000				
W42	Amenity Landscape/Planting Projects	8,000	12,000			
	<i>(Planting, paths, lighting)</i>					
W15	Halswell Junction Rd (No 610 – Railway)					
	New Construction/New K&C/Paths	1,530	51,000			
W11	(Railway – Shands)					
	New Construction/New K&C/Paths		5,000	51,000		
W68	Halswell Pool - Pools Upgrade				25,000	
W38	Halswell Quarry					
	Major Site Rehabilitation Projects <i>(Planting, wetland, picnic area)</i>	81,600	28,000	70,000	40,000	30,000
W60	Halswell Quarry Old Stone House Restoration					
	Buildings/Equipment Upgrades <i>(Restore old stone house)</i>	106,600				
W62	Halswell Quarry Park – Toilet					
	Buildings/Equipment – New <i>Construct toilet in picnic area)</i>	65,300				
W16	Halswell Rd (Candys – Glovers)					
	New Construction/New K&C/Paths	510	5,100			
W64	Highcrest Reserve					
	Buildings/Equipment – New <i>(Play structure)</i>			15,000		
W27	Hornby Domain					
	Irrigations Systems (Replacements) <i>(Renew irrigation system)</i>				15,000	
W17	Jipco Pl					
	New Construction/New K&C/Paths	765	25,500			
W70	Kennedys Bush (Extension)					
	New Reserves Development	10,000				

SCHEDULE OF CAPITAL WORKS - WIGRAM WARD

Map Ref	Description	1999/00	2000/01	2001/02	2002/03	2003/04
W33	Kirk Reserve					
	New Reserves Development <i>(Landscape development)</i>	10,000	15,000	15,000		
W44	Kyle Park					
	Amenity Landscape/Planting Projects <i>(Landscape development)</i>	35,000		7,500		
W53	Kyle Park – Toilet					
	Buildings/Equipment Replacement <i>(Replace toilet)</i>					45,000
W61	Leslie Park Car Park Extension					
	Carpark/Driveway Formation <i>(Carpark extension)</i>	76,500				
W47	Matangi Reserve					
	Amenity Landscape/Planting Projects <i>(Additional planting)</i>			4,000		
W18	Petworth/Woodside					
	New Construction/New K&C/Paths	612	6,120			
W46	Ridder Reserve					
	Amenity Landscape/Planting Projects <i>(Shrub planting along fence)</i>			4,500		
W41	Ruapuna Park					
	Amenity Landscape/Planting Projects <i>(Landscape development)</i>	17,000	18,000			
W57	Scott Park	20,000				
	Playground Renewal <i>(Renew equipment)</i>					
W40	Scott Park (Halswell)					
	Amenity Landscape/Planting Projects <i>(Additional planting)</i>	5,000	5,000			
	Sedgewick Reserve					
W55	Playground Renewal <i>(Renew equipment)</i>	15,000				
W39	Amenity Landscape/Planting Projects <i>(Landscape development)</i>	10,000				
W13	Shands Rd @ Printpacs					
	New Construction/New K&C/Paths			5,100		
	Shamrock Reserve					
W43	Amenity Landscape/Planting Projects <i>(Shrub planting)</i>		8,000			
W58	Playground Renewal <i>(Renew equipment)</i>				20,000	
W34	Showgate Reserve					
	New Reserves Development <i>(Planting, paths, platform)</i>			30,000		
W45	Springmead Reserve					
	Amenity Landscape/Planting Projects <i>(Additional planting)</i>			3,500		
W69	Templeton Domain					
	Playing Field Reconstruction			20,000		
W52	Templeton Domain – Toilet					
	Buildings/Equipment Replacement <i>(Replace toilet)</i>				50,000	

SCHEDULE OF CAPITAL WORKS - WIGRAM WARD

Map Ref	Description	1999/00	2000/01	2001/02	2002/03	2003/04
W63	Templetons Rd Sports Park – Toilet/Pavilion					
	Buildings/Equipment – New <i>(Construct toilet/pavilion)</i>					121,000
W31	Templeton Road Reserve					
	New Reserves Development <i>(Landscape development)</i>	50,000	100,000	75,000	35,000	100,000
W37	Viceroy Reserve					
	New Reserves Development <i>(Landscape development)</i>				8,000	5,000
	Warren Park					
W49	Amenity Landscape/Planting Projects <i>(Shelter planting)</i>					5,000
W59	Playground Renewal <i>(Renew equipment)</i>					40,000
W50	Wycola Park					
	Irrigation Systems (New) <i>(Auto irrigation for sports fields)</i>					25,000
W54	Wycola Park – Toilet					
	Buildings/Equipment Replacement <i>(Replace toilet)</i>					42,800
W7	Waterloo Rd (Carmen – Brixton)					
	Street Lighting - Safety	20,400				
W1	Waterloo Rd Cycleway			60,000	180,000	150,000
W56	Westbrooke Park					
	Playground Renewal <i>(Renew equipment)</i>	25,000				
W30	Westlake Park					
	New Reserves Development <i>(Planting, lake dev't, paths)</i>	20,000	10,000	45,000	40,000	15,000
W32	Westmoreland East Valley Reserve					
	New Reserves Development <i>(Planting, tracks, fencing)</i>	20,000	20,000	40,000	25,000	35,000
W2	Wigram Area Cycle Route					200,000
W36	Wigram Reserve					
	New Reserves Development <i>(Develop new reserve)</i>					25,000
W19	Woodside/Poshwaite					
	New Construction/New K&C/Paths	510	6,120			



The Mayor, Garry Moore at the opening of the Sister Cities Gardens at Halswell Quarry Park

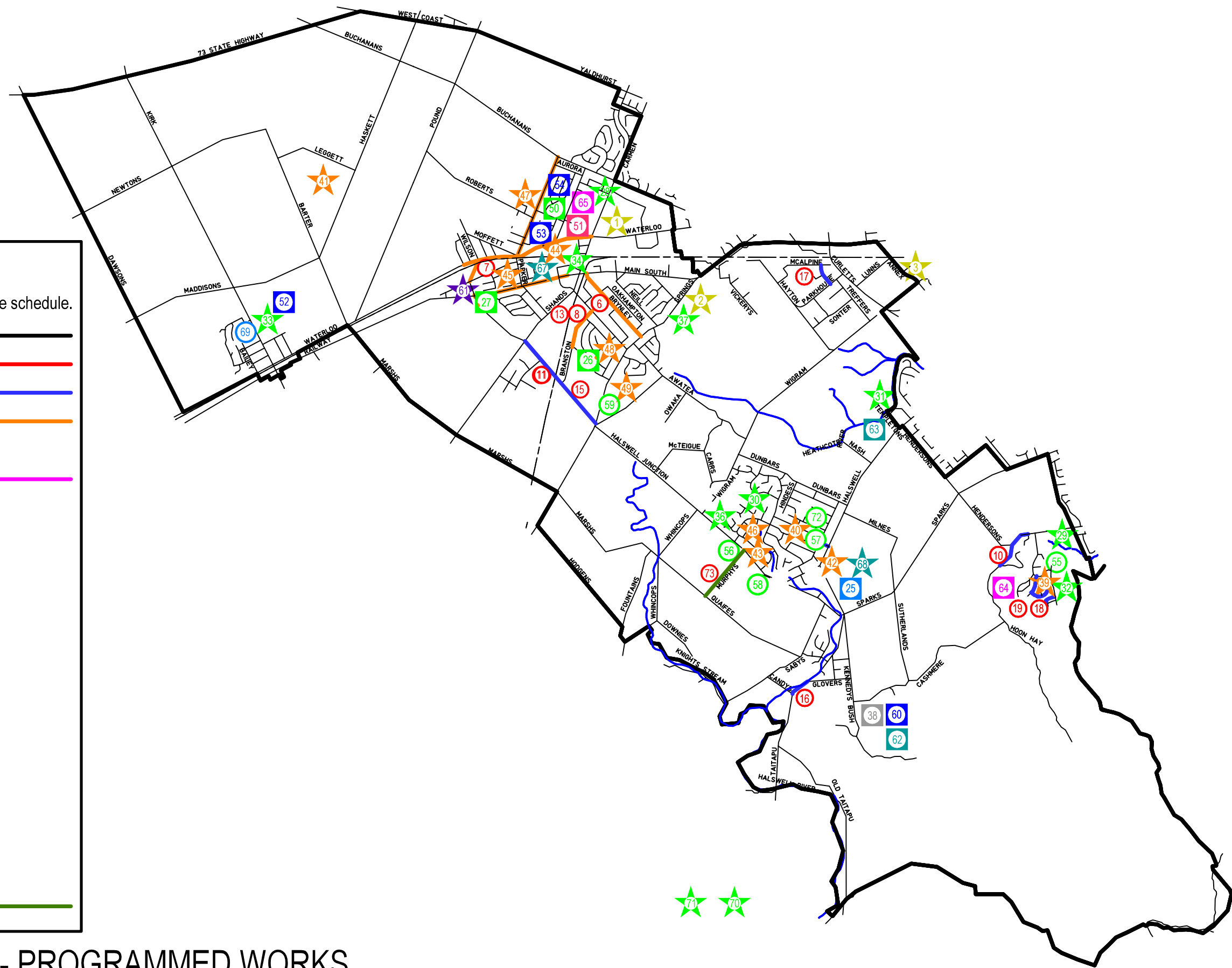


Deans Cottage in Riccarton Bush - the oldest building on the Plains

KEY

NOTE: For number references see schedule.

- Ward Boundary
- Kerb & Channel Renewals
- Kerb & Channel (New)
- Street Lighting Upgrade
- Safety Works N
- Neighbourhood Improvements Works N
- Playground Renewal N
- New Reserves Development ★
- Amenity Landscape / Planting Projects ★
- Playgrounds - New Installations N
- Irrigation Systems (New) N
- Buildings / Equipment Replacement N
- Buildings / Equipment (New) N
- Cycleways ★
- Fencing Replacements N
- Major Site Rehabilitation N
- Park Lighting N
- Car Park / Driveway ★
- Suburban Pools / Stadia ★
- Playing Fields Reconstruction N
- Seal Extension



WIGRAM WARD - PROGRAMMED WORKS

Writing Submissions

Staff at Sockburn Service Centre are committed to keeping Riccarton/Wigram residents' groups informed about different Council issues arising. As a result, submissions on policy proposals, the Annual Plan and discussion documents are often required.

Following are some basic guidelines to help you make effective written submissions, as often this is the only opportunity your organisation has to make its views heard.

1. Think before you write

Have a clear understanding about what has been proposed and why, and how it will affect your organisation, in addition to others in the community. Make sure you know when submissions are due to ensure you allow enough time for consultation, writing, proofreading as well as posting.

2. Talk to others in your community

Talk to other people in your community to see who else is making a submission. You may be able to combine a submission or concentrate on points that are not being made by others.

3. Plan your submission

Make sure your submission includes an introduction incorporating details of you, your organisation and what your organisation does, the key points you wish to make, a summary and a conclusion.

If you are making submissions on a discussion paper begin by addressing the main issue with general comments and then make detailed comments on specific points of the discussion paper.

Use headings, paragraphs and bullet points to emphasise the points you want to make. Include diagrams, including graphs or cartoons if appropriate. This helps to make the submission clear and easy to read.

4. Check your submission

Once completed check the submission for mistakes. A good approach is to give the submission to someone else to proofread.

5. Sending your submission

Think about sending your submission to other departments, community groups, ministers or MPs. You may gain support and work more effectively making such contact. Keep an original copy on file for reference.

6. Follow up

Once you have sent in your submission check to make sure it has been received and whether any additional information is required.

Check again later for progress so that you can arrange or attend meetings or make further submissions.

