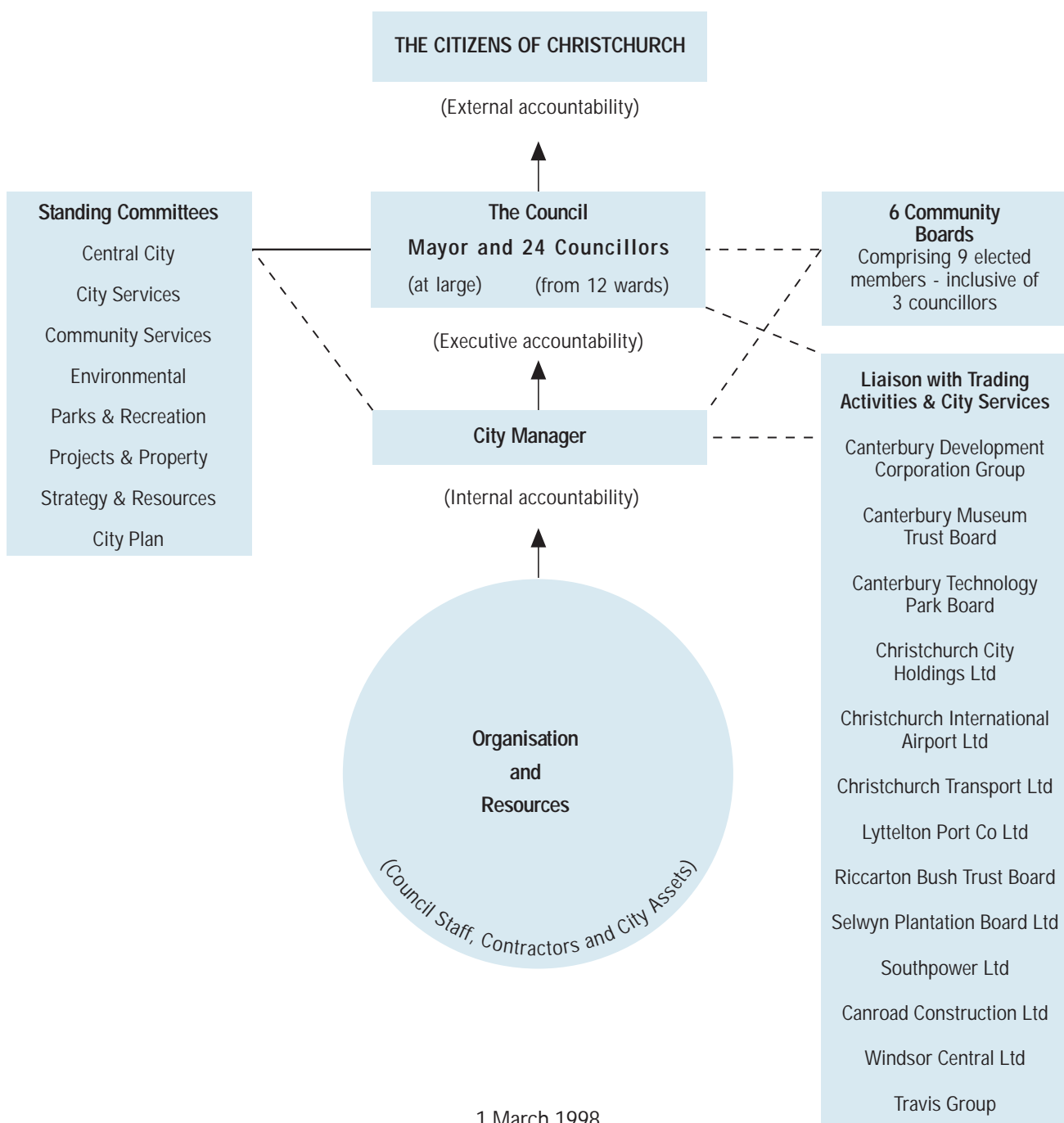




Information



Organisational Structure



1 March 1998

The shares of all these trading assets are owned by Christchurch City Holdings Limited. Further information on Christchurch City Holdings Limited can be obtained by calling 371 1475, the Christchurch City Holdings Limited registered office.

Christchurch City Council Directors of Trading Enterprises

Christchurch City Holdings Limited

(100% owned)

Owns the shares of the trading companies listed here.
P.O. Box 237, Christchurch
Tel: (03) 371-1475 Fax: (03) 371-1493

Directors

Cr A G James (Chairman)	V S Buck
Cr M E Murray	Cr D C Close
Cr P C R Harrow	D J Stock
Cr G A Moore	C Boyce
P R Taylor	

Selwyn Plantation Board Limited

(39% owned)

P O Box 48 Darfield
Tel: (03) 318-8311 Fax: (03) 318-8812

Board

D G Marsh (Chairman)	G Heenan
G J C Clark	W Woods
A W Grayburn	Cr D N Buist
R B Johnson	

Christchurch International Airport Limited

(75% owned)

P O Box 14-001 Christchurch
Tel: (03) 358-5029 Fax: (03) 353-7730

Board

P W Leeming (Chairman)	Cr M F Fahey
Dr B R Mann (Deputy Chairman)	Cr D J O'Rourke
A I R Jamieson	S Sheldon

Lyttelton Port Company Limited

(65.3% owned)

Private Bag, Norwich Quay, Lyttelton
Tel: (03) 328-8198 Fax: (03) 328-7828

Board

B Layton (Chairman)	Cr O T Alpers
P J Coakley	Cr I Howell
R J Todd	D Stewart

Southpower Limited

(87.625% owned)

Private Bag Christchurch
Tel: (03) 363-9000 Fax: (03) 363-9001

Board

J H Gray (Chairman)	R H Williams
P M Carter (Deputy Chairman)	L S Constable
K G Nolan	Sir Allan Wright
C S Laurie (Managing)	

Canroad Construction Limited

(100% owned)

PO Box 237, Christchurch
Tel: (03) 349-4345 Fax: (03) 349-8319

Board

D A Anderson (Chairman)	W J Fox
M J Hadlee	

Christchurch Transport Limited

(100% owned)

P O Box 10-171 Christchurch
Tel: (03) 379-4260 Fax: (03) 366-5643

Board

D Spence (Chairman)	Cr D G Cox
Mrs A Urlwin	Cr I Ganda
C Peter	B Waterfield

Christchurch Profile

History

Maori oral tradition suggests moa-hunting Maori tribes first appeared in Canterbury about one thousand years ago.

The Waitaha tribe is thought to have migrated from the east coast of the North Island to the Pegasus Bay area early in the 16th century, followed by Ngati Mamoe, also from the North Island, towards the end of the century.

About one hundred years later Ngai Tahu tribespeople also began to move south in a migration that continued until about 1830. By 1832 the population had been decimated by the North Island warrior Te Rauparaha and his supporters.

The first European landed in Canterbury in 1815, 45 years after Captain James Cook sighted Banks "Island", later discovered to be a peninsula. Whaling ships were operating out of Lyttelton by 1835, and in 1840 the first Europeans to settle on the plain arrived.

But it was in 1850 that the English settlers who were to found Christchurch reached Lyttelton. They came in four ships - the Charlotte Jane, the Randolph, the Sir George Seymour and the Cressy.

Christchurch became a city by Royal Charter on 31 July 1856. This makes it the oldest officially established city in New Zealand.

Recreation

Christchurch has over 3,000 hectares of parkland, comprising 13 major metropolitan parks, including the Botanic Gardens and Hagley Park, 89 major district parks and approximately 330 local and neighbourhood reserves.

Three main beaches - Sumner, New Brighton and Taylor's Mistake - lie close to the city.

There are five multi-purpose sports stadia and centres, including Queen Elizabeth II Park which was built for the 1974 Commonwealth Games and features swimming and diving pools and the Hydroslide. Thirteen other public swimming pools provide outdoor and indoor swimming.

Animal reserves include Orana Park Wildlife Trust and Willowbank Wildlife Reserve.

Eight museums can be visited within or close to the city, and Banks Peninsula and Kaiapoi also have museums. At least 20 art galleries feature works by local and international artists. Sports, social and cultural clubs number well into the hundreds.

Education

A wide range of private and state-operated pre-school education facilities are available in Christchurch. The city has 23 state and integrated private secondary schools and more than 120 primary and intermediate schools. Numerous schools service the outlying country areas.

Christchurch is the only New Zealand city with two universities. The University of Canterbury, about 5km from the city centre, offers a wide range of disciplines including engineering. Lincoln University, 15km from Christchurch Airport, specialises in agriculture, parks management and other environmentally-oriented courses.

Christchurch Polytechnic also offers a wide range of career and recreational courses.

Health and Welfare

Christchurch has two general and eight specialist state hospitals, 14 private hospitals and more than 20 community health care services.

More than 100 welfare organisations and support groups are provided to meet the needs of the community.

General Information

Location:

Latitude: 43° 31 mins 48 secs South
Longitude: 172° 37 mins 13 secs East
East Coast, South Island, New Zealand

Climate:

Temperature

Mean daily maximum	Jan. 21.5°C	July 10.3°C .
Mean temperature	11.7°C.	
Mean daily minimum	Jan. 11.6°C	July 1.4°C.
Mean annual maximum	32°	
Mean annual minimum	-4°	

Sunshine

Annual average sunshine hours = 2,040

Rainfall

Average rain days 1mm or more - 87 per annum
Average annual rainfall 655mm

Frost

Average days of screen frost (minimum air temp. less than 0°C) 36 per annum

Relative Humidity

Average relative humidity
January 3a.m. - 83%
3p.m. - 57%
July 3a.m. - 88%
3p.m. - 70%

Wind

Average number of days with gusts reaching 63km/h or more - 54 per annum
Average number of days with gusts reaching 96km/h or more - 2.8 per annum

Sister Cities:

Adelaide, South Australia; Christchurch, Dorset; Kurashiki, Japan; Seattle, USA.; Province of Gansu, Peoples Republic of China; Songpa-Gu, Korea

Area:

Christchurch City: 45,239 hectares

