

## How the Council works



*The Council meets at 9.30am on Thursday, in the Council Chambers at Civic Offices, Tuam Street. The public is welcome to attend these meetings.*

## The elected Council

Christchurch City Council has a Mayor and 12 Councillors, who were elected in October 2004 for a three year term. The Mayor is the elected leader of the Council, chairing meetings of the full Council and performing ceremonial roles as the leading citizen of the City. The Mayor is the spokesperson on major Council matters and participates in regional and national meetings as the Council's representative.

The Council meets in the Council Chambers at Civic Offices, Tuam Street, at 9.30am every Thursday. The role of the elected members is to set the direction of the Council and monitor how effectively its staff are delivering on the goals agreed with the public.

Most decisions are made by full Council. Items considered by Council are supported by comprehensive reports which outline the background, issues, options and costs.

In the early stages of working on an issue, discussions may be held in one of the Council's portfolio groups – small working groups of councillors with an interest in specific areas of council business.

Further discussion may be held in seminars where elected members hear preliminary reports about a topic and provide feedback about what else might be needed before a formal decision can be made on an issue.

At any stage the Council may call for input from Community Boards, interest groups or members of the public.

Also elected every three years are the Council's Community Boards. These boards provide a local forum for people to raise issues of concern and provide a close link between the community and the Council. The boards have authority to make decisions on some local projects. They meet at least once a month, and each has seven members including two appointed Councillors.

Christchurch's six community boards are:

- Burwood/Pegasus
- Fendalton/Waimairi
- Hagley/Ferrymead
- Riccarton/Wigram
- Shirley/Papanui
- Spreydon/Heathcote

## Banks Peninsula District reorganisation proposal

During the past year the Local Government Commission has considered a proposal, initiated by the ratepayers of Banks Peninsula District, for the abolition of Banks Peninsula District and its inclusion in Christchurch City.

This could result in an additional Councillor and the creation of two community boards.

On 19 August the Local Government Commission made its decision to issue a final reorganisation scheme for the abolition of Banks Peninsula District and its inclusion in Christchurch City. A poll will be held over the Banks Peninsula District on 19 November 2005.

“8552  
building consents  
were processed this year.”

## Mayor and Councillors



**Mayor**

Garry Moore CA FNZIM

### Councillors

*(and the wards they represent)*



*Burwood/Pegasus Wards:*

Carole Evans QSO JP (Deputy Mayor) and Gail Sheriff JP



*Riccarton/Wigram Wards*

Helen Broughton MA DipEd(GC) and Bob Shearing



*Fendalton/Waimairi Wards*

Sally Buck MEd (Dist.) and Pat Harrow DipHort



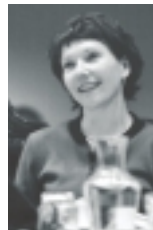
*Shirley/Papanui Wards*

Graham Condon QSM JP and Norm Withers



*Hagley/Ferrymead Wards*

Anna Crighton QSO JP MA(Hons) and David Cox FNZIM



*Spreydon/Heathcote Wards*

Sue Wells BA and Barry Corbett

## Community Board members

### Burwood-Pegasus

Glenda Burt (Chair)  
Carmen Hammond (Deputy Chair)  
Caroline Kellaway JP  
Tina Lomax  
Don Rowlands  
Carole Evans QSO JP (Cr)  
Gail Sheriff JP (Cr)

### Hagley-Ferrymead

Bob Todd OBE JP (Chair)  
Yani Johanson (Deputy Chair)  
John Freeman JP MA  
Brenda Lowe-Johnson JP  
Brendan Smith MB ChB  
David Cox FNZIM (Cr)  
Anna Crighton QSO JP MA (Hons) (Cr)

### Shirley-Papanui

Yvonne Palmer QSM JP (Chair)  
Myra Barry QSO JP (Deputy Chair)  
Bill Bush MNZM  
Ngaire Button  
Megan Evans  
Graham Condon QSM JP (Cr)  
Norm Withers (Cr)

### Fendalton-Waimairi

Mike Wall (Chair)  
Val Carter (Deputy Chair)  
Faimeh Burke  
Cheryl Colley JP MA (Hons) BBS Dip Tchng  
Andrew Yoon JP  
Sally Buck MEd (Dist) (Cr)  
Pat Harrow DipHort (Cr)

### Riccarton-Wigram

Peter Laloli (Chair)  
Neville Bennett JP BSc(Hons) PhD  
(Deputy Chair)  
Lesley Keast QSM JP  
Mike Mora  
Tony Sutcliffe JP  
Helen Broughton MA DipEd (GC) (Cr)  
Bob Shearing (Cr)

### Spreydon-Heathcote

Phil Clearwater MA (Hons)(Chair)  
Oscar Alpers LLB Notary Public  
(Deputy Chair)  
Paul de Spa BA Dip Tchng  
Chris Mene  
Megan Woods  
Barry Corbett (Cr)  
Sue Wells BA (Cr)

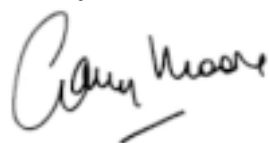
## Statement of compliance and responsibility

### Compliance

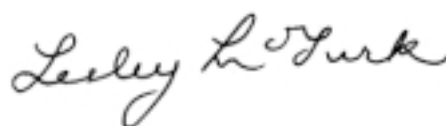
- 1 The Council and management of the Christchurch City Council confirm that all the statutory requirements of section 98 of the Local Government Act 2002 have been complied with.

### Responsibility

- 2 The Council and management of Christchurch City Council accept responsibility for the preparation of the annual Financial Statements and the judgements used in them.
- 3 The Council and management of Christchurch City Council accept responsibility for establishing, and maintaining a system of internal control designed to provide reasonable assurance as to the integrity and reliability of financial reporting.
- 4 In the opinion of the Council and management of the Christchurch City Council, the annual Financial Statements for the year ended 30 June 2005 fairly reflect the financial position and operations.



Garry Moore - Mayor  
15 September 2005



Dr Lesley McTurk - Chief Executive  
15 September 2005

## Chief executive and executive team

The Chief Executive of Christchurch City Council is Dr Lesley McTurk. Dr McTurk is the only employee of the elected Council, and is responsible to the Council for carrying out its decisions.

The Chief Executive employs all of the other staff at the Christchurch City Council. With an executive team of eight, Dr McTurk manages a staff of more than 2000 people.

### The executive team:



**Dr Lesley McTurk**  
*Chief Executive*



**Robert Lineham**  
*Director, Strategic Investment*  
Strategic Investment oversees the Council's significant investment in local strategic assets through Christchurch City Holdings Limited.



**Roy Baker**  
*General Manager, Corporate Services*  
Corporate services supports the organisation through the provision of accounting, information technology, procurement and a variety of administration services.



**Stephen McArthur**  
*General Manager, Community Services*  
Community Services delivers a range of social, cultural and recreation services, including the libraries network, the Christchurch Art Gallery, recreation centre network and social housing.



**Ian Hay**  
*General Manager, Strategic Development*  
Strategic Development leads the Council's policy development and planning, as well as providing project management services.



**Peter Mitchell**  
*General Manager, Regulatory and Democracy Services*  
Regulatory and Democracy Services provides a secretariat for the elected Council and community boards, as well as monitoring and enforcing the Council's regulatory responsibilities.



**Stephen Hill**  
*General Manager, Public Affairs*  
Public Affairs manages the Council's relationship with its customers, covering its customer service, marketing, communications and consultation functions.



**Jane Parfitt**  
*General Manager, City Environment*  
City Environment is responsible for planning and delivery of the Council's primary infrastructural responsibilities: water, wastewater treatment, solid waste, transport, parks and other public open spaces.



**Philippa Jones**  
*General Manager, Human Resources*  
Human resources develops corporate programmes and policies for the Council's staff, as well providing advice and support to line managers.





*A new event this year was  
The Return of the Godwits,  
a celebration of the oncoming of spring, which gained  
extensive national media coverage.*



## Highlights

Christchurch City Council's roles are enormously diverse. From maintaining and updating the city's infrastructure — such as supplying water, treating wastewater, providing a transport system — to planning the city's development, entertaining residents with festivals and displaying fine art, your City Council delivers a range of services aimed at supporting and enhancing residents'/visitors' quality of life.

What follows is a glimpse of the Council's major achievements during the year from 1 July 2004 to 30 June 2005.

### Democracy and Governance

After the local government elections in October 2004, the Christchurch City Council was reduced from 24 to 12 councillors plus the mayor. This change gave the Council an opportunity to reassess the way it operated. The structure was amended to introduce portfolio groups (linked to Community Outcomes), weekly seminars and weekly Council meetings.

Some of the city's six Community Boards also changed to meeting fortnightly.

### Wastewater

Treatment and disposal of wastewater is one of the major issues facing Christchurch. The continuing upgrade of the city's treatment plant included the installation of the final two clarifiers and completion of a storage tank for processed sewage. The design was started for two new digesters to provide extra treatment capacity. Construction should start early in the 05-06 year.

Disposal of treated wastewater via an ocean outfall took a big step forward with the Council's lodging of the ocean outfall Assessment of Environmental Effects. Submissions were received in April and May and the hearing process started. Conceptual design of this major project is on schedule.

Also on target is work on the 10-year major sewer upgrade programme for the entire city. Milestones here included the renewal of delivery pipes from Linwood and St Martins and the start of construction on the Linwood pump station.

[www.ccc.govt.nz/wastewater/](http://www.ccc.govt.nz/wastewater/)

### Water

New wells at Farrington and Burnside began feeding into the city's water system. This work complements the drilling of two new replacement wells and the building of a new pump station in Worcester Street. The successful development and commissioning of these wells continue the supply of high-quality drinking water to our growing city.

[www.ccc.govt.nz/water/](http://www.ccc.govt.nz/water/)

### Waste

The opening of the world-class Kate Valley Landfill by Transwaste Canterbury Limited made it an important year for this part of the Council's operations. An allied change was the transfer of management of the city's three refuse stations to the Recovered Materials Foundation Limited. Both are key elements in the Council achieving objectives in its Solid and Hazardous Waste Management Plan. Trials started in February on garden composting and kerbside collection of organic wastes.

[www.ccc.govt.nz/waste/](http://www.ccc.govt.nz/waste/)



## Transport

Christchurch's quality of life and its economic success rely upon its transport system and its successful management and development. As Christchurch continues to grow, so too do the demands placed on the transport system. The Council has been active in addressing these demands through:

### Policy and planning

- Assessing the transport system needs in support of the Urban Development Strategy project
- Updating the Cycling and Road Safety Strategies
- Consulting about a transport concept plan for the central city area which was developed with several key stakeholders
- Planning for an expansion of the highly successful Bus Exchange to cater for projected growth in passengers.

### Operational activities

- Assisting the successful management of the 2005 British and Irish Lions Rugby Tour in Christchurch
- Updating the Speed Limits Bylaw for the City (required by law change)
- Providing advice to the debates about noisy vehicles.

### Physical works programme

- Commencing the widening of Opawa Road
- Installing two variable message signs in the central city providing real time information about parking availability at Council car parks
- Commencing the pre-loading work on the Blenheim Road Deviation project
- Completing the planning and consenting processes for the Brighton Mall slow road project.

The way the streets maintenance work is carried out was reviewed and resulted in new area-wide, performance-based contestable contracts with one contractor responsible for all streets maintenance work in that area. There will be four areas: central city (within the four avenues), northern, eastern and southern.

[www.ccc.govt.nz](http://www.ccc.govt.nz)

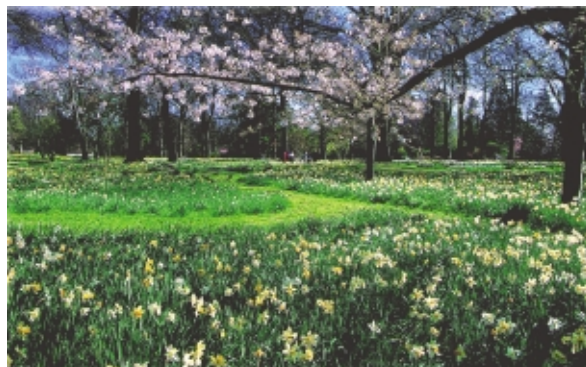
## Greenspace

The Council protects and enhances the city's green spaces, such as parks, reserves and wetlands. Activities undertaken included:

- Creating extra stormwater capacity needed to service infill housing through open waterways and park linkages between streets as part of the Addington Open Space Project
- Purchasing land in Mairehau for use as stormwater retention in the Marshland area
- Completing the draft Biodiversity Strategy ready for public comment
- Completing the Jellie Park pond redevelopment, Scarborough Park facility upgrade and Upper Riccarton Domain playground renewal
- Ongoing work in the redevelopment of Wainoni Park and Heathcote Heritage Park
- Commencing a major redevelopment of the playground at Spencer Park, one of the city's most popular picnic spots
- Completing the circuit walkway at Travis Wetland Nature Heritage Park
- Completing the extension of the Port Hills mountain bike track system.

The Council was pleased with the high numbers of volunteers who assisted with plantings and track work in the Port Hills, coastal, forest and wetland regional park restoration sites.

[www.ccc.govt.nz/parks](http://www.ccc.govt.nz/parks)



## Regulation

Continued growth resulted in the Council receiving a high number of consent applications associated with land and property development.

A major challenge was the implementation of the new Building Act, which introduced a new framework for regulating building work and clearer performance standards for buildings. Work started on preparing an application for registration as a building consent authority, which the Act requires councils to achieve by 30 November 2007.

Concerns about contamination led to the testing of 93 private properties in Sandilands. This area in Wainoni/Aranui was formerly a rubbish dump. The Council lodged an application with the Ministry for the Environment for financial assistance to enable remediation of the 12 properties found to have contamination levels that exceed acceptable levels.

[www.ccc.govt.nz](http://www.ccc.govt.nz)

## City Development

The Council consulted the public about options for the Greater Christchurch Urban Development Strategy from April to June 2005 through more than 30 public meetings and the wide distribution of an options discussion booklet. This is a great example of how local bodies and authorities can work well together for the good of Greater Christchurch - the Banks Peninsula, Selwyn and Waimakariri district councils, Christchurch City Council, Environment Canterbury and Transit New Zealand being partners in the project. It attracted a record 3200 submissions from all over Greater Christchurch.

[www.greaterchristchurch.org.nz/](http://www.greaterchristchurch.org.nz/)

## Community and Recreation

The Council delivers a range of social, cultural and recreation services to residents and visitors to the city.

### Community Development highlights included:

- DriveThru – on the web at [www.drivethru.info](http://www.drivethru.info) — the Council's new youth participation website, is designed to encourage young people to participate in the

Council's decision-making process

- Launching the Go Free Mobility Scooters (17 June) sponsored by TSB Bank
- Organising the Disabled Persons Assembly National Strategic Hui (17–19 June)
- Facilitating the Disability Reference Group
- Organising education sessions for community groups, e.g. 5 Easy Steps to Fundraising
- Through KiwiAble, a recreation and sports programme for people with disabilities; JOLT, a mixed-ability dance company, and "a different light" mixed-ability physical theatre are breaking new ground in New Zealand. The first of their kind, they are providing integration through the arts and empowering people with disabilities to develop their creativity. Classes and workshops have led to public performances.

### Recreation, Sports and Arts highlights included:

- Coordinating the 2005 British and Irish Lions Rugby Tour in the following areas:
  - Black Out Banner Competition – more than 30 primary schools were involved and more than 230,000 votes were received
  - Footy in the Square event
  - Campervan Parking, Cathedral Square events and arrangements with hospitality industry (bars and cafes).
- Successful bids for events such as the 2006 World Wheel Chair Rugby Championships and 2008 World Super Senior Tennis
- Successful high-profile sports events held such as Maxi Basketball, Coast to Coast, IPG NZPGA Golf
- Arts Participation Guide — the first free arts guide of its kind in New Zealand, providing easy access to arts opportunities for all
- Creative New Zealand — Creative Places Award for the sculpture 'A Tribute to Firefighters'.

[www.ccc.govt.nz](http://www.ccc.govt.nz)

## Recreation Facilities

Overall use of Council recreation facilities extended to three million visits for the first time. The increases came mainly from greater use of QEII's pool and indoor stadium. Also pleasing was that surveys show customer satisfaction levels remain high.

The Council reviewed and reorganised the service provided by its smaller outdoor suburban pools. The aim is to work smarter, providing better over-all service without increasing the cost.

Highlights include:

- The National Touch Rugby Championships at QEII
- Two swimmers based at Jellie Park representing New Zealand at the world championships in Canada
- A public-private partnership at QEII to develop five exciting new water slides worth \$2.6m (opened July 2005).

[www.ccc.govt.nz/leisurecentres](http://www.ccc.govt.nz/leisurecentres)

## Libraries and Information

The new library system, Unicorn, went live in November. Most libraries have extended their opening hours with an emphasis on longer, more convenient hours in the weekends and earlier opening during the week.

### Library buildings:

- Building began on the new community library at Parklands in February. The library will pioneer the concept of changing spaces, focusing on different customers at different times of the day (opened August 2005)
- Work also began in February on the new Upper Riccarton Library - Te Kete Wananga o Putaringamotu, a large combined school and community urban library which will be the first of its kind in New Zealand
- Hornby Library celebrated its 25th anniversary on 22 February in partnership with the community centre.

### Promotions and events:

- The Windows to the World competition, in August, received more than 3500 entries
- The Reading Crusade took place again in partnership with the Crusaders Rugby Team and covered their franchise area. More than 13,300 entries were received and just under 107,000 books were read as a result
- A number of events promoted Maori Language Week (26 July–1 August). Christchurch City Libraries won the inaugural Maori Language Week award for local body/library entries and was runner up in the Supreme Award
- May Music Month increased music collection consumption and membership; 10,840 CDs and tapes were borrowed across the libraries; a 25 per cent increase compared with the previous May
- Odyssey (July–August), an annual reading incentive programme for young adults, received more than 700 registrations
- The National Digital Strategy was launched on 16 May simultaneously at Parliament and at the South Learning Centre through videoconferencing. The strategy is about creating a digital future for all New Zealanders, using the power of information and communications technology to enhance all aspects of our lives. Planning the delivery of the strategy has begun and Council's Digital Library Services Manager, has been appointed as a member of the national committee advising the Minister on its implementation
- Any Questions, a partnership with National Library, began in November. This phone service helps school students find the information they need and is available Monday-Friday from 1-6pm
- Haneta Pierce received the prestigious Robin Hakopa Te Reo Maori Award, which recognises commitment in promoting te reo and tikanga Maori within the library profession.

[www.library.christchurch.org.nz](http://www.library.christchurch.org.nz)



### Christchurch Art Gallery Te Puna O Waiwhetu

Corporate sponsors and private donors continue to generously support the Gallery which has established itself as a key Christchurch attraction for both the local community and visitors.

Favourable national reviews were received for both a major overseas touring exhibition of contemporary German art (The Scenic Eye), and a Gallery-generated exhibition, Coming Home in the Dark, which highlighted recent Canterbury art.

The Gallery continues to win both national and international recognition, earning special merit citations in the 2004 National Business Review Sponsorship of the Arts Awards, and internationally, with another Museums Australia Publications Design Award for its Bulletin.

[www.christchurchartgallery.org.nz](http://www.christchurchartgallery.org.nz)

### Festivals and Events

Major festivals produced by the Council achieved significant increases in attendance and participation this year. Major events within the annual Showtime Canterbury festival attracted record crowds, while audiences to the city's free SummerTimes concerts, Starry Nights and Classical Sparks, increased by 30,000 over 2003-04. KidsFest ticket sales increased by 15 per cent.

Council continued to core-fund a series of city-wide events and festivals for the benefit of Christchurch residents and visitors including a rejuvenated Festival of Flowers and Romance.

A priority across all events was to promote local talent and refresh the content of existing festivals. Successful innovations in 2004 included the Great Kids Campout and Kite Day within SummerTimes, and the inclusion of more New Zealand content in the Classical Sparks concert.

A new event was The Return of the Godwits, a celebration of the oncoming of spring, which gained extensive national media coverage.

[www.ccc.govt.nz](http://www.ccc.govt.nz)



## Customer Services

Christchurch residents telephoning the Council for information or services are now connecting to the organisation's new contact centre, an amalgamation of four previously separate call centres. The new centre, opened in January 2005 in a purpose-built facility, means more staff are available to answer enquiries, and callers have faster access to the information they need.

## Economic Prosperity

The Council is involved directly and indirectly in initiatives that support the city's economy. An example of direct involvement is the ownership and lease back to Pratt & Whitney and Air New Zealand of an engine testing facility recently opened at Christchurch International Airport. The project will deliver jobs and foreign exchange earnings to Christchurch.

The Canterbury Development Corporation (CDC) and Christchurch and Canterbury Marketing (CCM) are two specialist service providers which the Council engages to deliver economic development initiatives.

CDC continued to work with many businesses in Christchurch, providing thousands of hours of workshops and one-on-one coaching. This included mentoring for 465 businesses, and support services for 528 start-up firms. It assisted local companies in securing \$2.03m in government grants.

CDC continued to support the six key industry clusters it has identified; electronics, software, nutraceuticals, international education, film and fashion. The organisation was also involved in identifying or leading a number of citywide economic development initiatives and supporting business growth and new opportunities.

Tourism is a significant contributor to the Christchurch economy and key tourism indicators showed the contribution to the city's economic health made by the marketing by CCM of Christchurch and Canterbury as a tourist destination. For the year, guests nights were up 0.8 per cent in Christchurch, continuing the growth trend of recent years in both number of visitors and spend in Christchurch.

The Council's Christchurch City Holdings Limited (CCHL) continued to contribute to the economic strength of the city. Its equity increased substantially during the year, from \$761m to \$971m, in the main reflecting:

- A \$90m first-time revaluation by Lyttelton Port Company Limited of its land, buildings and harbour structures
- An \$82m revaluation by Orion Group Limited of its electricity distribution network
- An improved group net profit after tax, including a \$25m gain by Orion Group on the sale of the majority of its stake in Australian listed company, Energy Developments Limited.

Since 1995, the value of CCHL's assets has increased from \$400m to just over \$1 billion. In that same period, more than \$650m of capital and dividend payments have been made to the Council.





*“75% of residents  
said they had visited a library this year”*



